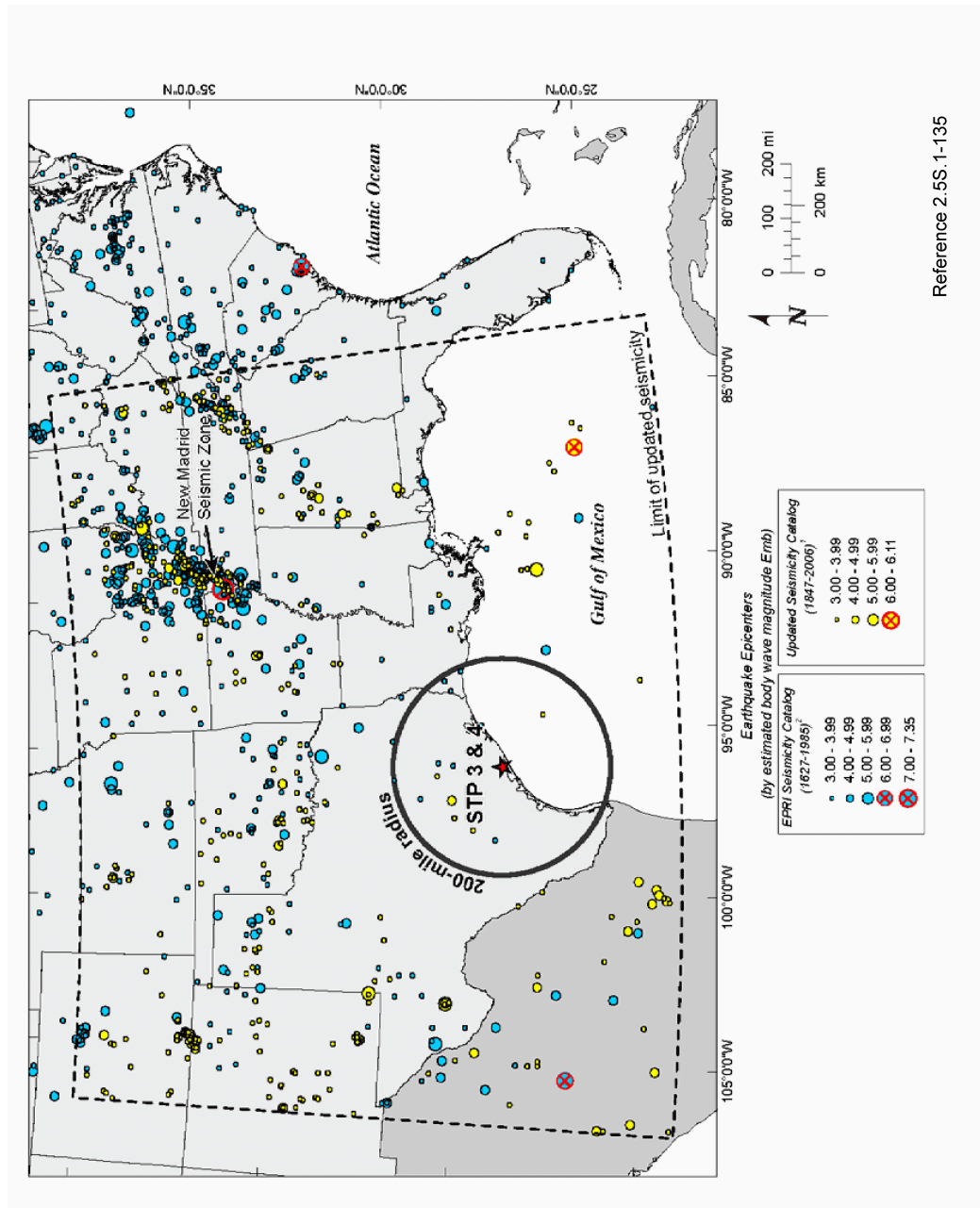


Figure 2.5S.1-25 Mt. Enterprise - Elkhart Graben



Reference 2.5S.1-135

Figure 2.5S.1-26 New Madrid Seismic Zone



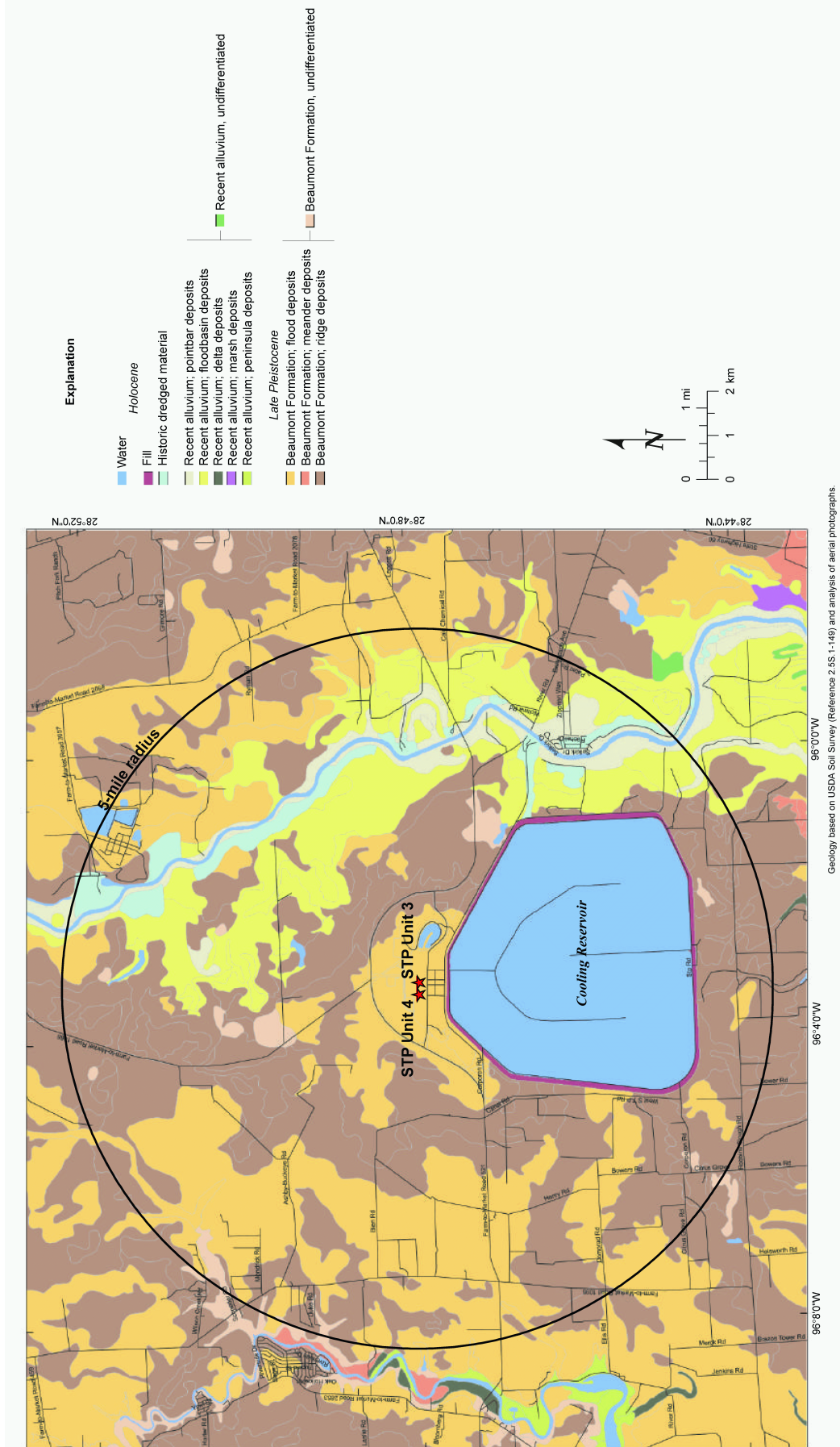


Figure 2.5S.1-27 Site Area Geological Map (5-mile radius)

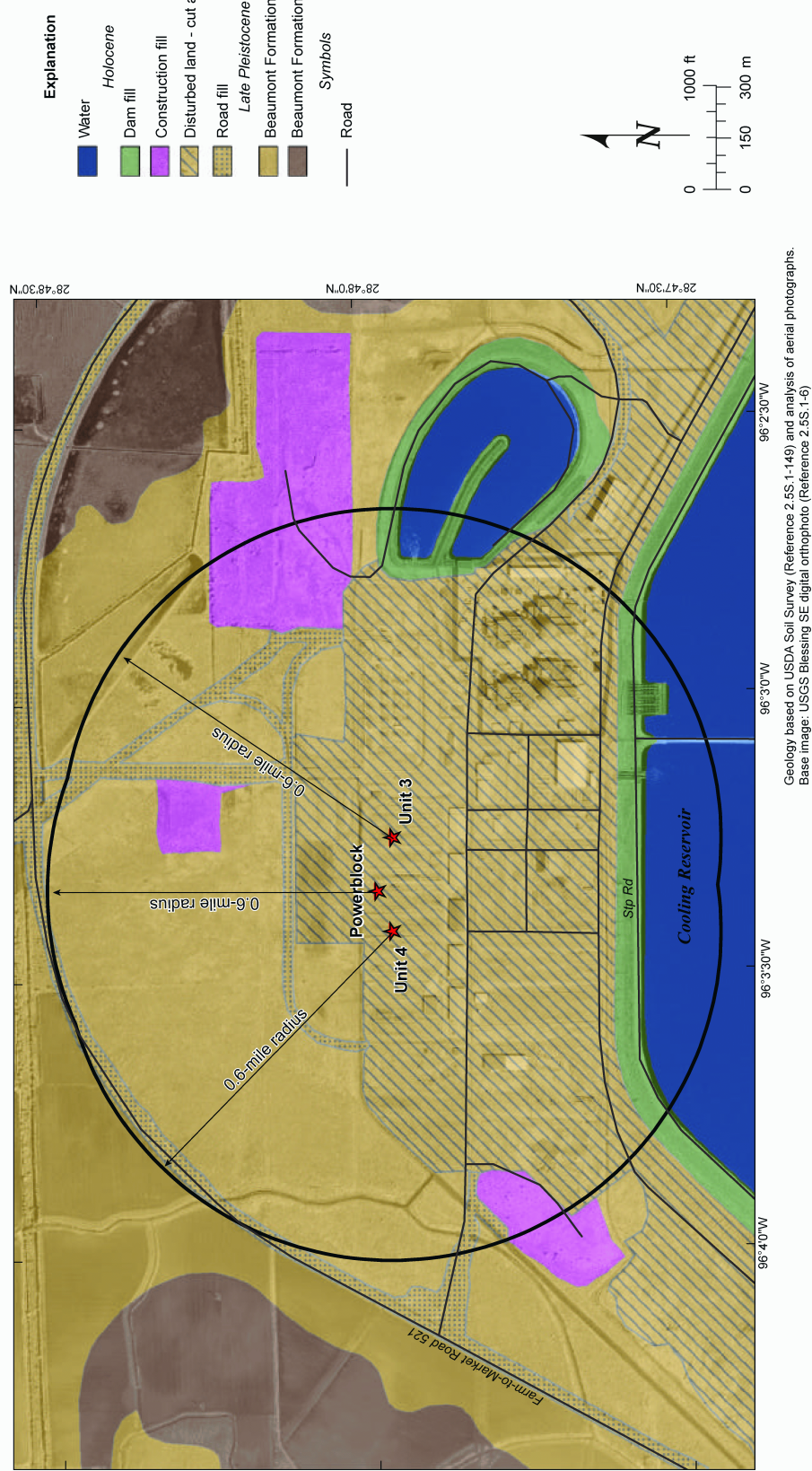


Figure 2.5S.1-28 Site Area Geological Map (0.6-mile radius)

Stratigraphic Unit	Geological/Geotechnical Strata Description	Ground Surface	Approximate Thickness	Hydrogeologic Unit	
Beaumont Formation	A - Silty Clay		10-30 ft		Upper Shallow Aquifer Confining Layer
	B - Clayey Silt				
	C - Silty Sand		20-30 ft		Upper Shallow Aquifer
	D - Silty Clay		15-25 ft		Lower Shallow Aquifer Confining Layer
	E - Sand		25-50 ft		Lower Shallow Aquifer
	F - Silty Clay		100-150 ft	Chicot Aquifer	Silty Clay and Silt with discontinuous thin Sand Layers
	H - Silty Sand				
	J - Silty Clay				
	K - Sandy Silt		>500 ft		Deep Aquifer
	L - Silty Clay				
	M - Silty Sand				
	N - Silty Clay				

Note: This figure is not to scale.

**Figure 2.5S.1-29 STP Site Specific Generalized Stratigraphic Column**



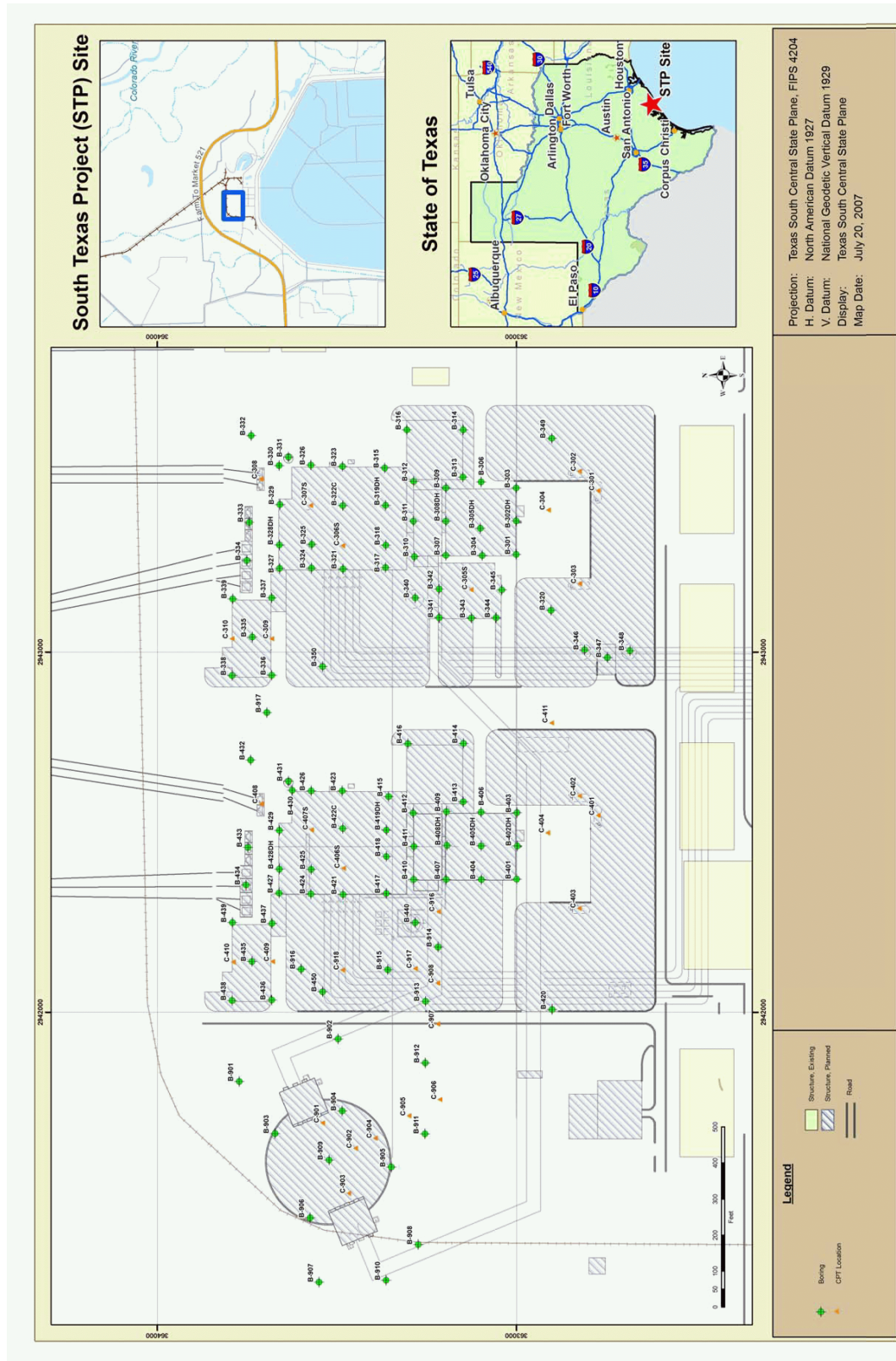
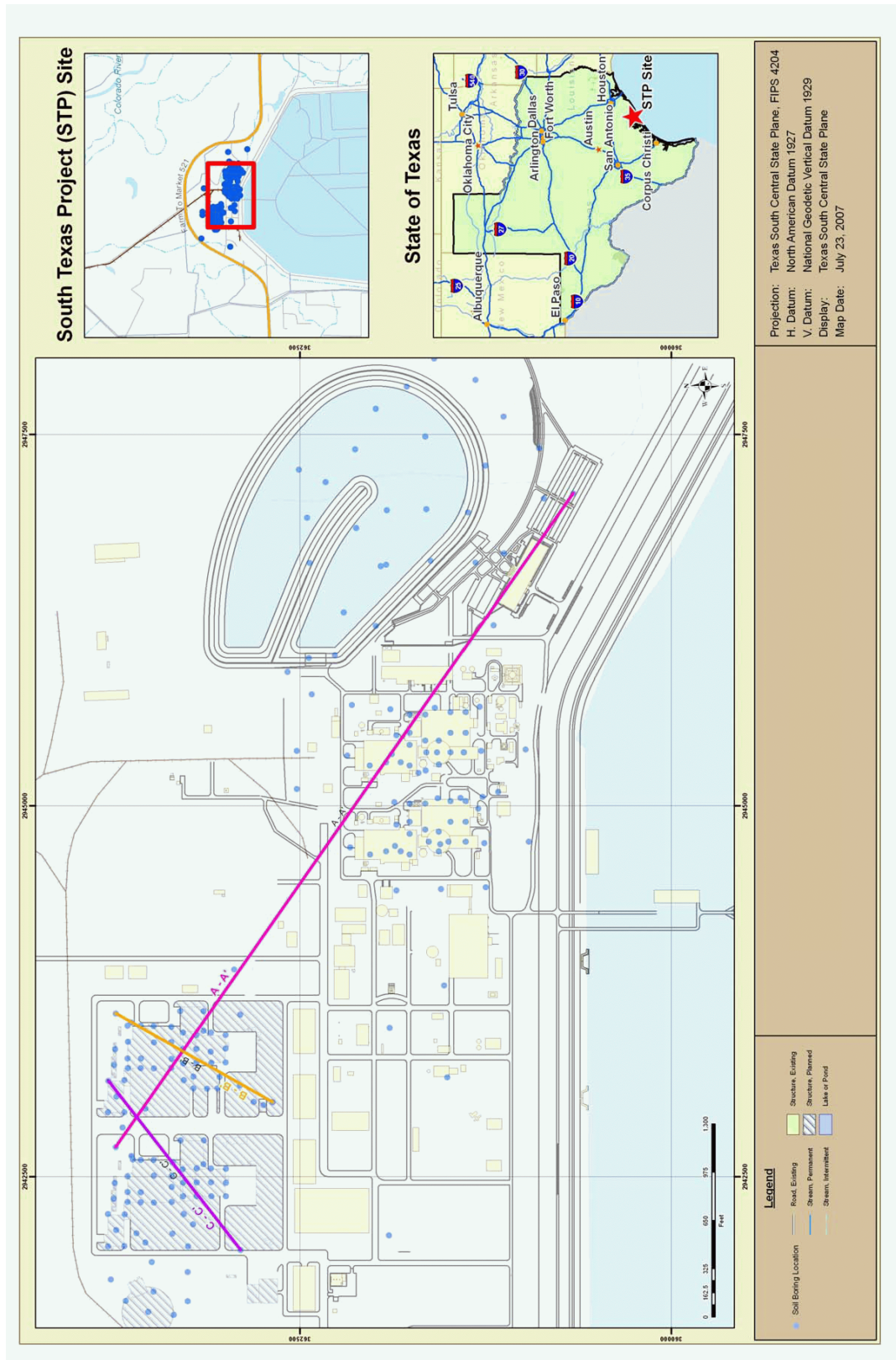


Figure 2.5S.1-30 STP 3 & 4 Boring and CPT Locations



**Figure 2.5S.1-31 STP 3 & 4 Cross Section Locations**

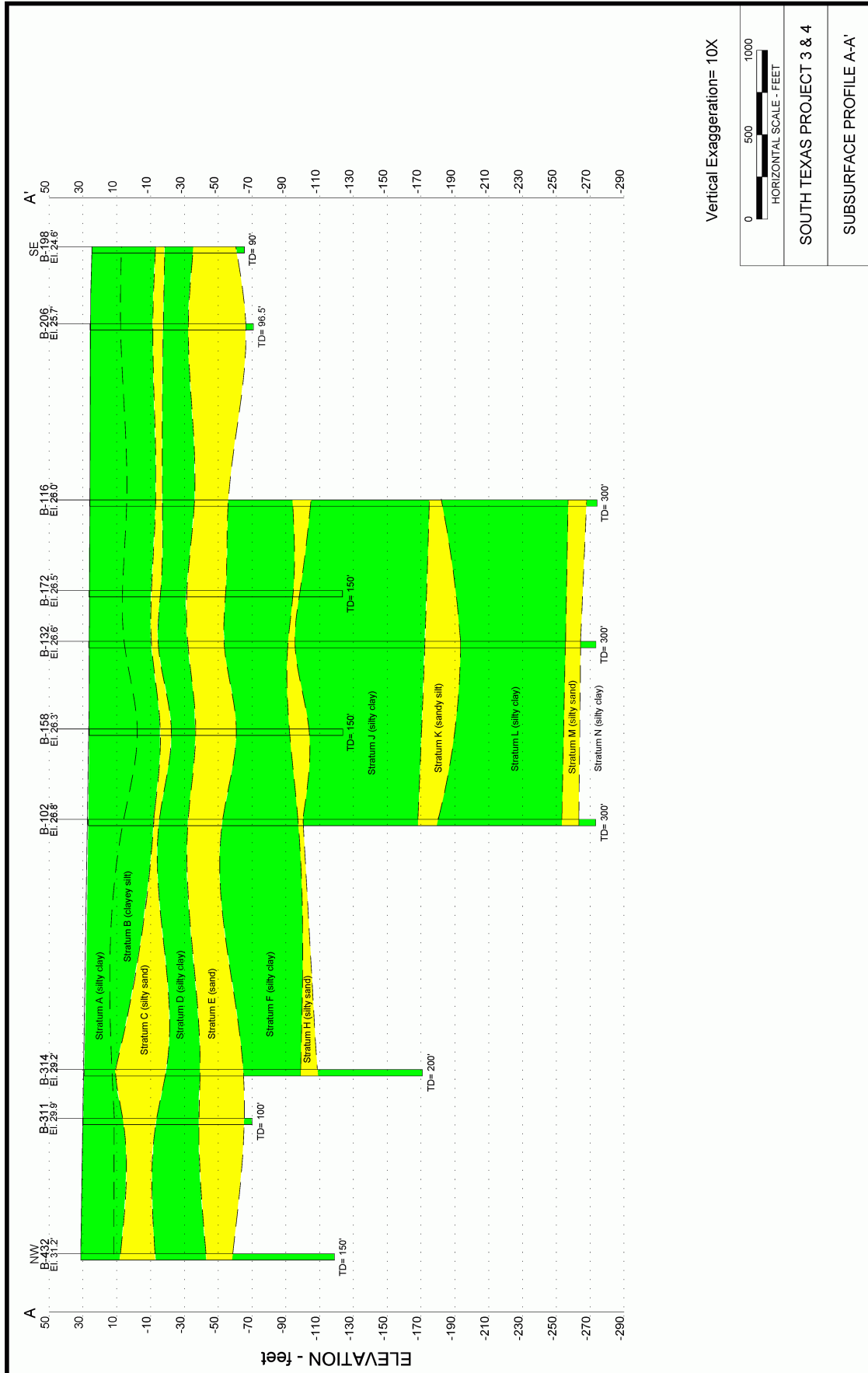


Figure 2.5S.1-32 Subsurface Profile A-A'



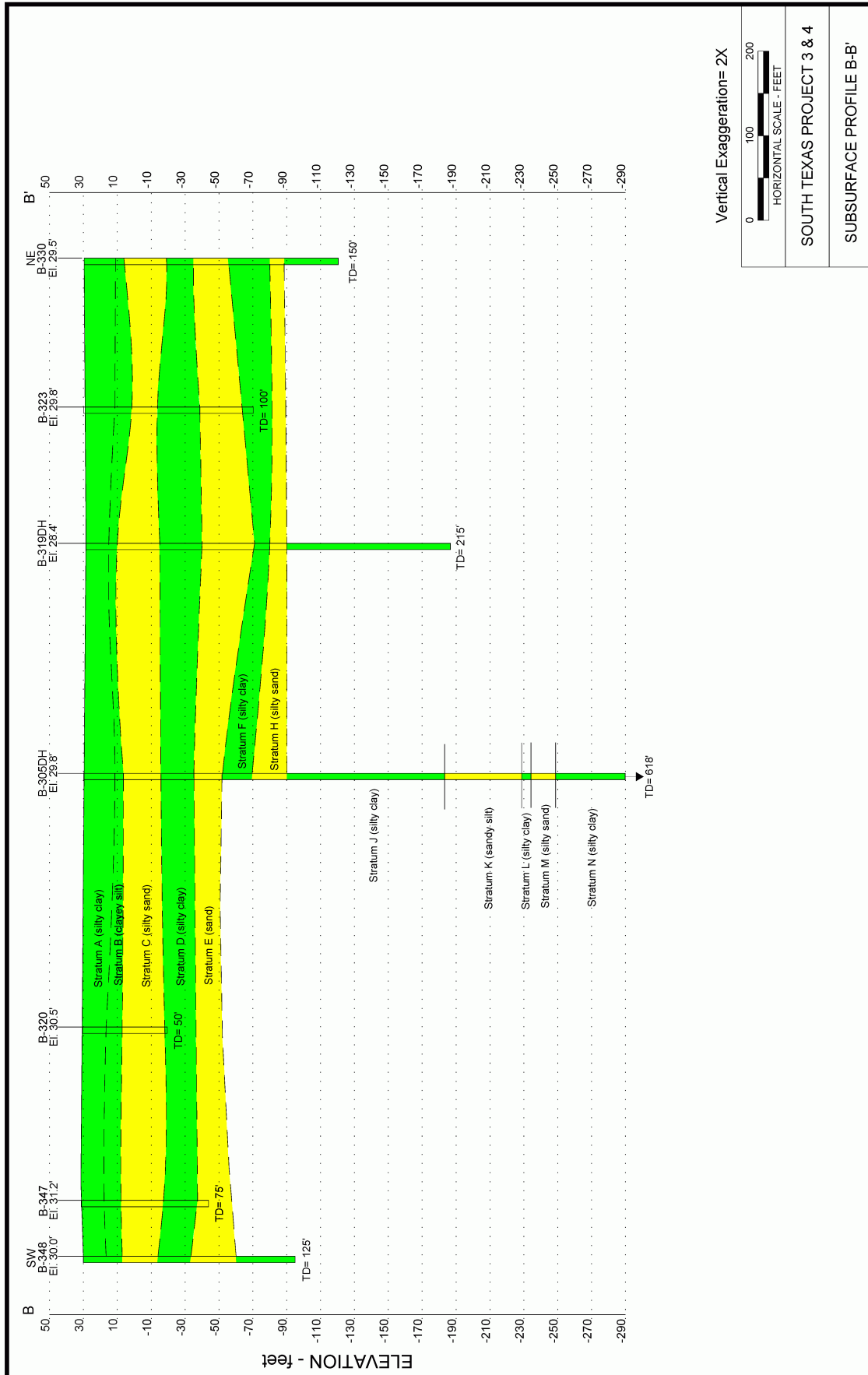


Figure 2.5S.1-33 Subsurface Profile B-B'

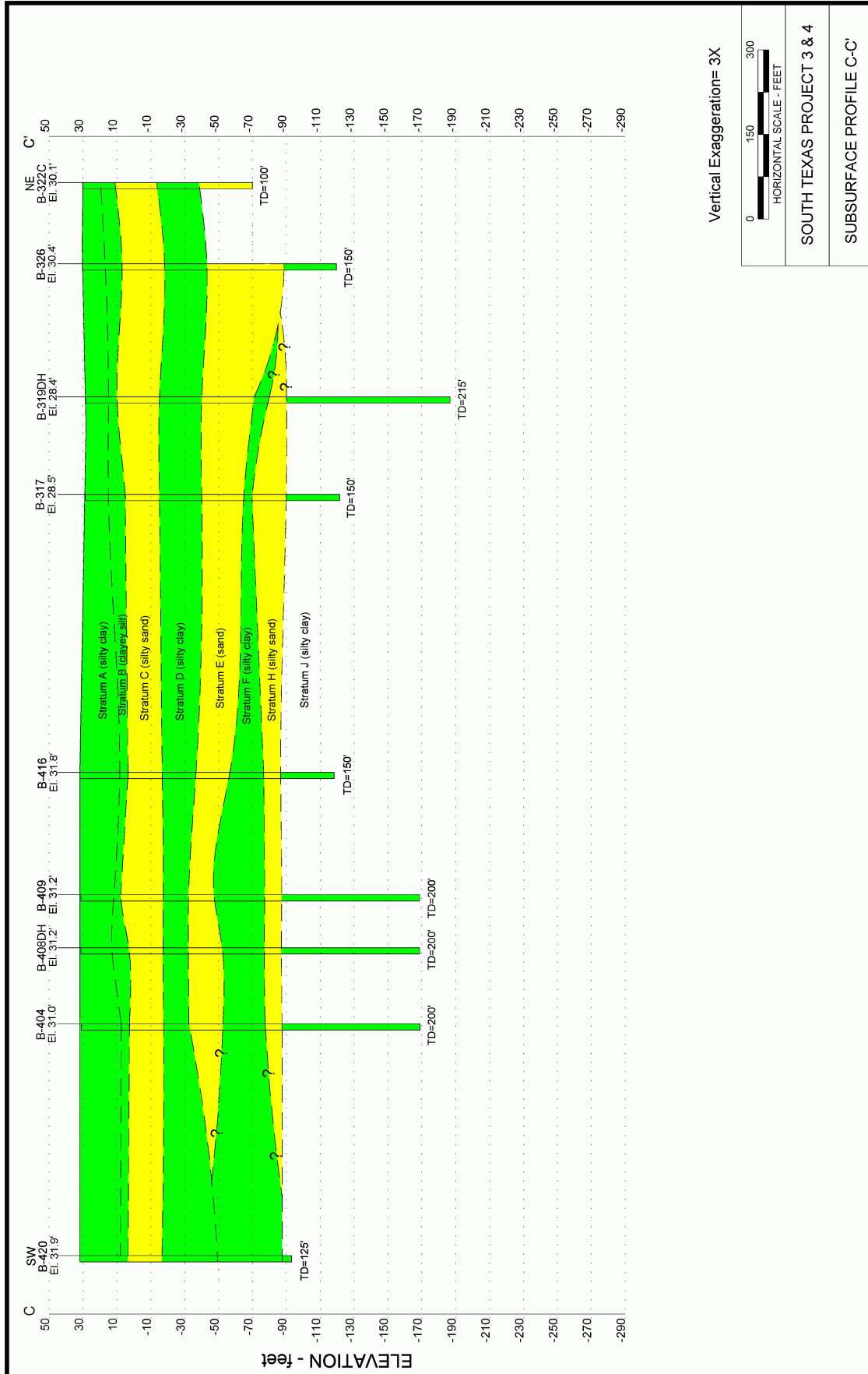


Figure 2.5S.1-34 Subsurface Profile C-C'

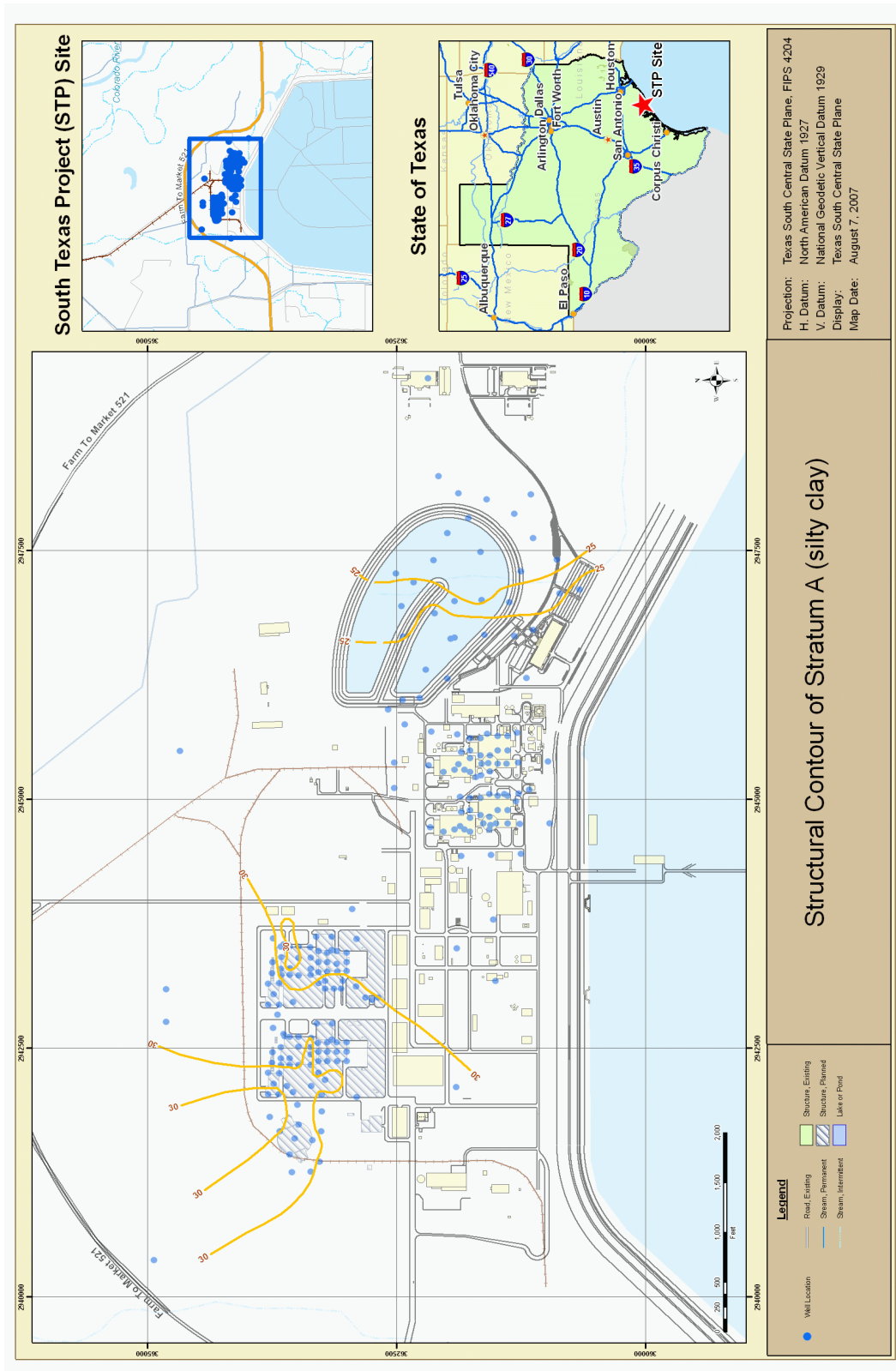
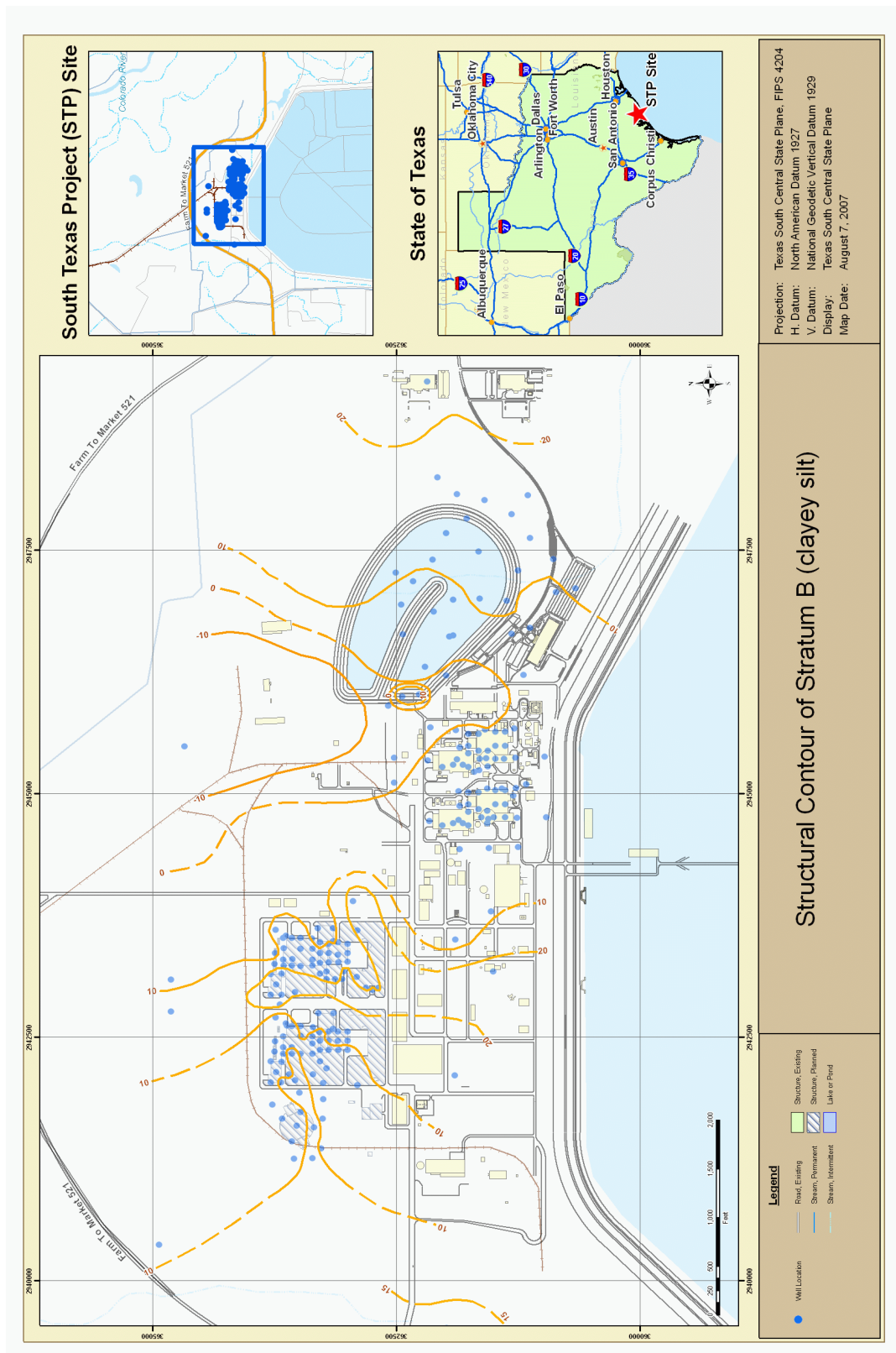


Figure 2.5S.1-35 Structure Contour Map of Stratum A (Silty Clay)





**Figure 2.5S.1-36 Structure Contour Map of Stratum B (Clayey Silt)**