

EDO Principal Correspondence Control

FROM: DUE: / /

EDO CONTROL: G20070608

DOC DT: 08/23/07

FINAL REPLY:

John E. Ebel
Boston College

TO:

Chairman Klein

FOR SIGNATURE OF :

** GRN **

CRC NO: 07-0572

DESC:

Invitation to Participate in the Northeast Region
Advanced Seismic System Roundtable on
September 17-18, 2007 (EDATS: SECY-2007-0302)

ROUTING:

Reyes
Virgilio
Kane
Ash
Ordaz
Cyr/Burns
Dyer, NRR
Collins, RI
Rakovan, OEDO

DATE: 09/04/07

ASSIGNED TO:

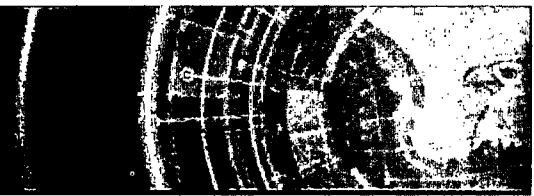
CONTACT:

NMSS

Weber

SPECIAL INSTRUCTIONS OR REMARKS:

For Appropriate Action.



EDATS Number: SECY-2007-0302

Source: SECY

General Information

Assigned To: NMSS

OEDO Due Date: NONE

Other Assignees:

SECY Due Date: NONE

Subject: Invitation to Participate in the Northeast Region Advanced Seismic System Roundtable on September 17-18, 2007

Description:

CC Routing: Region I

ADAMS Accession Numbers - Incoming: NONE

Response/Package: NONE

Other Information

Cross Reference Number: G20070608, LTR-07-0572

Staff Initiated: NO

Related Task:

Recurring Item: NO

File Routing: EDATS

Agency Lesson Learned: NO

Roadmap Item: NO

Process Information

Action Type: Appropriate Action

Priority: Medium

Signature Level: No Signature Required

Sensitivity: None

Urgency: NO

OEDO Concurrence: NO

OCM Concurrence: NO

OCA Concurrence: NO

Special Instructions: For Appropriate Action.

Document Information

Originator Name: John E. Ebel

Date of Incoming: 8/23/2007

Originating Organization: Boston College

Document Received by SECY Date: 9/4/2007

Addressee: Chairman Klein

Date Response Requested by Originator: NONE

Incoming Task Received: Letter

**OFFICE OF THE SECRETARY
CORRESPONDENCE CONTROL TICKET**

Date Printed: Sep 04, 2007 11:12

PAPER NUMBER:	LTR-07-0572	LOGGING DATE:	08/30/2007
ACTION OFFICE:	EDO		
AUTHOR:	John E. Ebel		
AFFILIATION:	MA		
ADDRESSEE:	Dale Klein		
SUBJECT:	Northeast Region Advanced National Seismic System Roundtable		
ACTION:	Appropriate		
DISTRIBUTION:	Chairman, Comrs		
LETTER DATE:	08/23/2007		
ACKNOWLEDGED	No		
SPECIAL HANDLING:	Made publicly available in ADAMS via EDO/DPC		
NOTES:	Chairman will out of town..per Chairman's office forward to EDO for consideration		
FILE LOCATION:	ADAMS		
DATE DUE:		DATE SIGNED:	

EDO --G20070608



BOSTON COLLEGE

WESTON OBSERVATORY
DEPARTMENT OF GEOLOGY AND GEOPHYSICS

August 23, 2007

Chairman Dale Kline
US Nuclear Regulatory Commission
Washington, DC 20555

Subject: Northeast Region Advanced National Seismic System Roundtable

Dear Chariman Kline:

You or your appointed delegate from your organization is invited to participate in a roundtable discussion of present and future goals of the Northeast Region of the Advanced National Seismic System (ANSS) on September 17-18, 2007. The roundtable will be held at the Boston College Conference Center in Dover, Massachusetts. The ANSS is a program, initiated by Congress and administered by the U.S. Geological Survey, to carry out earthquake monitoring throughout the United States and to deliver timely earthquake information and products to all public and private users. The roundtable is being organized by the Northeast Region ANSS Working Group and is hosted by Weston Observatory of Boston College and the Lamont-Doherty Earth Observatory of Columbia University. Information about the Advanced National Seismic System can be found at the web site <http://www.earthquake.usgs.gov/research/monitoring/anss>.

Sheets with the formal roundtable invitation, roundtable schedule, housing information, and directions to the conference facility are included with this letter. Also included is some background information on the ANSS. We ask that you return the Invitation Response form included here or send email to hibeaum@bc.edu concerning your plans to attend this important workshop. Please note that the roundtable will begin at 1:00 pm on Monday, September 17 and will conclude at noon on Tuesday, September 18.

We look forward to seeing you on September 17 and 18.

Sincerely,

John E. Ebel
Director, Weston Observatory of Boston College
ANSS-NE Co-coordinator

07 AUG 26 AM 11:38

07 AUG 26 AM 11:38

Invitation to

A Planning Roundtable for the Northeast Region of the Advanced National Seismic System (ANSS)

A planning roundtable for the Northeast Region of the Advanced National Seismic System (ANSS-NE) will be held on September 17-18, 2007 at the Boston College Conference center at Dover, Massachusetts. The purpose of this roundtable is to present a background to the ANSS, to summarize the latest understanding of earthquake hazard and risk in the northeastern United States, to explain current operations and data products of the ANSS-NE, and to set goals for the ANSS-NE for the next 3-5 years. The primary outcome of the roundtable discussions will be a report to the US Geological Survey explaining, from the stakeholder's point of view, what the needs are during the next 3-5 years for earthquake monitoring in the northeastern US. The report should summarize the important issues regarding earthquake hazards and earthquake monitoring that need to be addressed and should consider priorities and funding for activities to address those issues. We also want to formalize the organization of an ANSS-NE stakeholders advisory committee.

Through the National Earthquake Hazard Reduction Program, the U.S. Congress has directed the U.S. Geological Survey to implement the ANSS. The ANSS serves as the mechanism to improve seismic instrumentation, data distribution, data archiving, and interaction between data producers and data recipients. The management structure for the ANSS is composed of representatives from both seismological (data producers) and end-user (data and information consumers) communities at both the national and regional levels, one of the regions being the northeastern U.S. A major key to the success of ANSS is the active participation of end-users of seismic data and information in the development, implementation and operation of the ANSS. Correspondingly, part of the Northeast Region management structure should be composed of representatives from the user community as well as people involved in operating seismic networks and analyzing seismic data. This user community includes, but is not limited to geotechnical and structural engineers, emergency planners and response teams, schools, natural resource museums or parks, public utilities, and insurers. Your organization is being invited to this workshop as a seismic data or information provider or as a potential recipient of products from the seismic monitoring.

Please respond to this invitation by filling out the attached questionnaire and returning it via e-mail (bibeaum@bc.edu), FAX (617-552-8388), or regular mail by September 5, 2007. We hope you or a representative of your organization can attend.

Dr. John E. Ebel
Director, Weston Observatory
Boston College
381 Concord Rd.
Weston, MA 02493
ebel@bc.edu
Tel. 617-552-8300
Fax. 617-552-8388

Dr. Art Lerner-Lam
Associate Director for Geophysics and Geology
Lamont-Doherty Earth Observatory, Columbia U.
P.O. Box 1000, 61 Route 9W
Palisades, NY 10964
lerner@ldeo.columbia.edu
Tel. 845-365-8356
Fax. 845-365-8150

Background to the Advanced National Seismic System (ANSS)

Seismic networks are usually multi-purpose and jointly-funded, and they frequently cross jurisdictional boundaries. While the U.S. Geological Survey (USGS) has the congressionally assigned responsibility to monitor seismic activity in the U.S. (Public Law 101-614), there are many other organizations, federal, state and private, who have specific monitoring needs and thus operate seismographs independently of those supported by the USGS. As required by Public Law 105-47 the USGS undertook a review of the state of seismic monitoring in the US. Major seismic network operators and selected recipients of network products met in a 1998 workshop to perform this review. A report was drafted based on this workshop and published in USGS Circular 1188, "An Assessment of Seismic Monitoring in the United States" (<http://greenwood.cr.usgs.gov/pub/circulars/c1188>). In addition to a review of the current monitoring operations, this report provided recommendations for the modernization of seismic networks and their infrastructure.

In the reauthorization act for the National Earthquake Hazard Reduction Program (NEHRP), Congress responded to the findings of the report by requiring the USGS to develop a management and implementation plan for an "Advanced National Seismic Research and Monitoring System" (ANSS). At a one-day meeting in New Mexico in February 2000, representatives of a dozen different seismological organizations outlined such a management plan. An over-riding theme of this plan is that seismic monitoring of the US should be implemented within regions representing the major physiographic and tectonic areas of the country. The designated regions are Alaska, Hawaii, Pacific Northwest, Intermountain, California, Western U.S., Mid-America and Northeastern U.S. Finally, a national group provides links between the individual regions as well as provide broad national coverage and integrate with global seismic monitoring programs.

The ANSS management plan provides for a national coordinator who is a USGS employee. The coordinator reports to the Director of the USGS and to an independent National Steering Committee made up of representatives of seismological organizations that provide and use monitoring data. The national coordinator is responsible for coordinating the regions.

Each region has its own regional coordinator (not necessarily a USGS employee) and its own oversight or steering committee to reflect the unique characteristics of the region. Individual regions should have a strong management structure, but this directive does not necessarily imply that all activities reside in one physical location. It is the responsibility of each region to design and implement a high-quality, comprehensive monitoring and data dissemination system best suited to its specific needs. Additionally, the regions are to operate with other regions in a coordinated manner to form a uniform national system. Formal participation in one of the regions is required to obtain USGS support. However, all seismic monitoring groups of any size are encouraged to become part of a regional group, whether or not they receive USGS support. Within each region, seismic data users should have a strong influence on operating standards and policy.

The ANSS is administered by the USGS, but many parts of it are operated by other organizations. Non-USGS supported organizations that significantly contribute to the ANSS can expect some assistance from the USGS. This assistance is based on individual considerations but can be in the form of direct financial support, equipment and supplies, computer software, and/or technical assistance including contract field technicians.

Advanced National Seismic System (ANSS) - Northeast Region Roundtable
Monday and Tuesday, September 17-18, 2007
Boston College Connors Family Retreat and Conference Center

Program Schedule

Monday, September 17 <ul style="list-style-type: none"> • 12:00pm—Registration • 1:00pm—Welcome • 1:15pm-5:00pm—Presentations on earthquake hazard, earthquake monitoring, earthquake engineering, and emergency response for the northeastern US • 6:30pm—Dinner and keynote address 	Tuesday, September 18 <ul style="list-style-type: none"> • 9:00am—Discussion of priorities for the ANSS-NE for the next 5 years • 10:30am—Discussion of ANSS-NE implementation issues for the next 5 years • Noon—Adjourn • Weston Observatory OPEN HOUSE 381 Concord Road, Weston, MA (Optional Tours, Exhibits, Q&As with the scientists between 1:30 pm and 4:00 pm – No registration – Drop-In basis)
--	--

Housing & Meals Information

Housing is reserved at the delightful Boston College Connors Family Retreat and Conference Center, located at 20 Glen Street in beautiful Dover, MA. Private, single rooms are available September 16th and/or September 17th at the cost of \$85.00 per night. Included in your room charge is a lovely Continental Breakfast, available to you either or both days of the Roundtable.

The Commuters' Continental Breakfast at the Boston College Connors Family Retreat and Conference Center compliments your morning coffee with delicious Bagels, Muffins, Butter Croissants, Scones, Coffee Cake and Danish. Available to you either or both days of the Roundtable at a cost of \$10.00 per day.

Complimentary Coffee, Tea, Water, Assorted Juices and Sodas will be available throughout both days of the Roundtable.

Lunch will be catered and served on site at the Boston College Connors Family Retreat and Conference Center. Lunch is a delightful deli platter with assorted sandwiches and wraps featuring Roast Turkey, Roast Sirloin, Grilled Chicken Breast, Ham, Tuna and Grilled Vegetables with appropriate condiments. Add to this a luscious Penne Pasta with Sun Dried Tomatoes and Pesto or a Broccoli Salad mixed with Bacon, Red Onion, and Raisins tossed in a Sweet Mary based dressing, Assorted Cookies, Brownies, and Beverages. Lunch is available to you either or both days of the Roundtable at a cost of \$18.00 per day.

The Roundtable Dinner Reception presented on the evening of September 17, 2007 is on site At the Boston College Connors Family Retreat and Conference Center. Wrap up your day with a hot buffet. Selection includes Garden Salad with Dressing, Chicken Marsala, Rice Pilaf, Sautéed Garden Vegetables, Fresh Rolls, Assorted Cookies and Warm Apple Crisp. The cost of the Dinner is \$36.00. A **Cash Bar** will be available prior to, during, and after Dinner.

Connors Family Retreat and Conference Center is available by phone at 617-552-9210 or on the web at <http://www.bc.edu/offices/retreat/>

Driving Directions

<p>From the West</p> <ul style="list-style-type: none"> • Take 90 East/ Mass Pike • Take Route 30 exit 13 toward Natick/ Wellesley—go 0.8mile • Bear right onto MA-30 (Cochituate Rd)—go 0.2 mile • Turn right at Speen Street—go 0.6 mile • Merge on to Worcester Road/ MA-9 East via ramp on the left—go 0.9 mile • Take the 27 ramp toward Natick/ Sherborn—go 0.1 mile • Bear right onto North Main Street/ MA 27—go 1.3 miles • Turn left at East Central Street/ MA 135—go 0.3 mile • Turn right at Union Street—go 1.5 miles • Continue on Pleasant Street South—go 0.2 miles • Turn right at Glen Street—go 2.1 miles 	<p>From the South</p> <ul style="list-style-type: none"> • Take Interstate 95 North • Take the US-1 exit 9 to Walpole (Route 27)—go 0.4 mile • Continue on Boston Providence Turnpike—go 0.6 mile • Bear left at Boston Providence Turnpike—go 0.8mile • Turn right at Old Post Road—go 0.1 mile • Bear left on Common Street—go 1.8 miles • Continue on Elm Street—go 1.5 miles • Continue on High Street—go 1.6 miles • Continue on Spring Street—go 1.0 mile • Bear left at N. Meadow Road—go 0.4 mile • Turn right at Dale Street—go 0.3 mile • Turn left at North Street—go 1.2 miles • Bear left at Farm Street—go 2.2 miles • Turn left at Glen Street—go 0.2 miles • Arrive at 20 Glen Street, Dover, Ma 02030
<p>From the North</p> <ul style="list-style-type: none"> • Take Interstate 95 South • Take the Route 16 West exit (21B) to Newton/ Wellesley—go 0.1 mile • Bear right on Route 16 West—go 181 feet • Turn right on Washington St.—go 4.8 miles • Continue on Eliot Street—go 0.3 mile • Turn left on Pleasant Street—go 0.3 mile • Turn right on Glen Street—go 2.1 miles 	<p>Directions from Logan Airport</p> <ul style="list-style-type: none"> • Exit the Ted Williams Tunnel follow signs to 90 West/ Mass Pike • Take Interstate 95 South • Follow From the North directions

Transportation from Logan Airport

Veterans Cab

781-235-1600

Make sure you let them know you are going to the Boston College Connors Family Retreat and Conference Center in Dover

Approximate cost \$ 63.00 + \$ 7.00 for tolls

**The Advanced National Seismic System (ANSS) Northeast Region
Stakeholders Roundtable**

September 17, 2007 –September 18, 2007

We look forward to your attendance! To assist us in planning these sessions, please complete this registration form and return it by **September 5, 2007** to Marilyn Bibeau, Weston Observatory Administrator. Please use mail if including checks for optional lodging and meals. Checks **must** be made payable to the **Trustees of Boston College** and mailed to the Weston Observatory of Geology & Geophysics, Boston College, 381 Concord Road, Weston, MA 02493. If returning attendance registration only, please feel free to fax your form to Marilyn at (617) 552-8388. If you have any **questions or special needs**, please contact Marilyn at (617) 552-8311 and she will assist you.

Organization: _____

Representative: _____

E-Mail: _____ Fax: _____

Mailing Address: _____

I WILL be attending the The Advanced National Seismic System (ANSS) Northeast Region Stakeholders Roundtable: YES (Please Circle)

I WILL require Lodging at the Boston College Connors Family Retreat and Conference Center at the cost of \$85.00 per night (Includes Continental Breakfast): YES NO (Please Circle Option)
If YES, please Circle Night(s) Lodging required: September 16, 2007 September 17, 2007

I Wish to purchase the Commuters' Continental Breakfast at the Boston College Connors Family Retreat and Conference Center at the cost of \$10.00. Compliments your morning coffee with delicious Bagels, Muffins, Butter Croissants, Scones, Coffee Cake and Danish. YES NO
(Please Circle Option)

If YES, please Circle Day(s) Breakfast is required: September 17, 2007 September 18, 2007

Coffee, Tea, Water, Assorted Juices and Sodas will be available throughout both days Free of Charge.

I Wish to purchase Lunch at the Boston College Connors Family Retreat and Conference Center at the cost of \$18.00 per Lunch. Lunch is a delightful deli platter with assorted sandwiches and wraps featuring Roast Turkey, Roast Sirloin, Grilled Chicken Breast, ham, Tuna and Grilled Vegetables with appropriate condiments. Add to this a luscious Penne Pasta with Sun Dried Tomatoes and Pesto or a Broccoli Salad mixed with Bacon, Red Onion, and Raisins tossed in a Sweet Mary based dressing, Assorted Cookies, Brownies, and Beverages. YES NO (Please Circle Option)

If YES, please Circle Day(s) Lunch is required: September 17, 2007 September 18, 2007

I Will participate in the Roundtable Dinner Reception on the evening of September 17, 2007 at the Boston College Connors Family Retreat and Conference Center. The cost of the Dinner is \$36.00. Wrap up your day with a hot buffet. Selection includes Garden Salad with Dressing, Chicken Marsala, Rice Pilaf, Sauteed Garden Vegetables, Fresh Rolls, Assorted Cookies and Warm Apple Crisp. If YES, please Circle: **Dinner - September 17, 2007**

A Cash Bar will be available prior to, during, and after Dinner is served on the evening of September 17, 2007.

SUMMARY

(Please Check Choices)

Lodging September 16, 2007 @ \$85.00 _____

Lodging September 17, 2007 @ \$85.00 _____

Commuters' Continental Breakfast September 17, 2007 @ \$10.00 _____

Commuters' Continental Breakfast September 18, 2007 @ \$10.00 _____

Lunch September 17, 2007 @ \$18.00 _____

Lunch September 18, 2007 @ \$18.00 _____

Roundtable Dinner Reception September 17, 2007 @ \$36.00 _____

TOTAL COST: \$ _____

PLEASE INCLUDE CHECK, PAYABLE TO TRUSTEES OF BOSTON COLLEGE, WITH THIS REGISTRATION FORM.

Weston Observatory of Geology & Geophysics
 Boston College
 381 Concord Road
 Weston, MA 02493
 Tel. (617) 552-8311
 Tel. (617) 552-8300
 Fax: (617) 552-8388