

AUGUSTA/BUSH FIELD GA

Latitude = 33.37 N

WMO No. 722180

Longitude = 81.97 W

Elevation = 148 feet

Period of Record = 1973 to 1996

Average Pressure = 29.87 inches Hg

Design Criteria Data

	Design Value	Mean Coincident (Average) Values			
		Wet Bulb Temperature (°F)	Humidity Ratio (gr/lb)	Wind Speed (mph)	Prevailing Direction (NSEW)
Dry Bulb Temperature (T)	(°F)				
Median of Extreme Highs	100	76	98	8.9	WNW
0.4% Occurrence	97	76	104	8.7	WSW
1.0% Occurrence	94	76	107	8.4	W
2.0% Occurrence	92	75	106	8.3	WSW
Mean Daily Range	23	-	-	-	-
97.5% Occurrence	29	27	17	4.2	W
99.0% Occurrence	25	23	14	4.2	W
99.6% Occurrence	21	19	11	5.0	W
Median of Extreme Lows	15	14	8	6.3	WNW
	Design Value	Mean Coincident (Average) Values			
		Dry Bulb Temperature (°F)	Humidity Ratio (gr/lb)	Wind Speed (mph)	Prevailing Direction (NSEW)
Wet Bulb Temperature (T_{wb})	(°F)				
Median of Extreme Highs	82	92	143	6.4	SE
0.4% Occurrence	79	90	128	7.0	SE
1.0% Occurrence	78	89	125	7.1	WSW
2.0% Occurrence	77	88	121	7.1	WSW
	Design Value	Mean Coincident (Average) Values			
		Dry Bulb Temperature (°F)	Vapor Pressure (in. Hg)	Wind Speed (mph)	Prevailing Direction (NSEW)
Humidity Ratio (HR)	(gr/lb)				
Median of Extreme Highs	152	88	1.00	4.6	SE
0.4% Occurrence	137	83	0.90	5.3	SE
1.0% Occurrence	132	82	0.88	5.4	SE
2.0% Occurrence	127	82	0.85	5.5	S
Air Conditioning/ Humid Area Criteria	# of Hours	T ≥ 93°F	T ≥ 80°F	T_{wb} ≥ 73°F	T_{wb} ≥ 67°F
		160	1397	1242	2890

Other Site Data

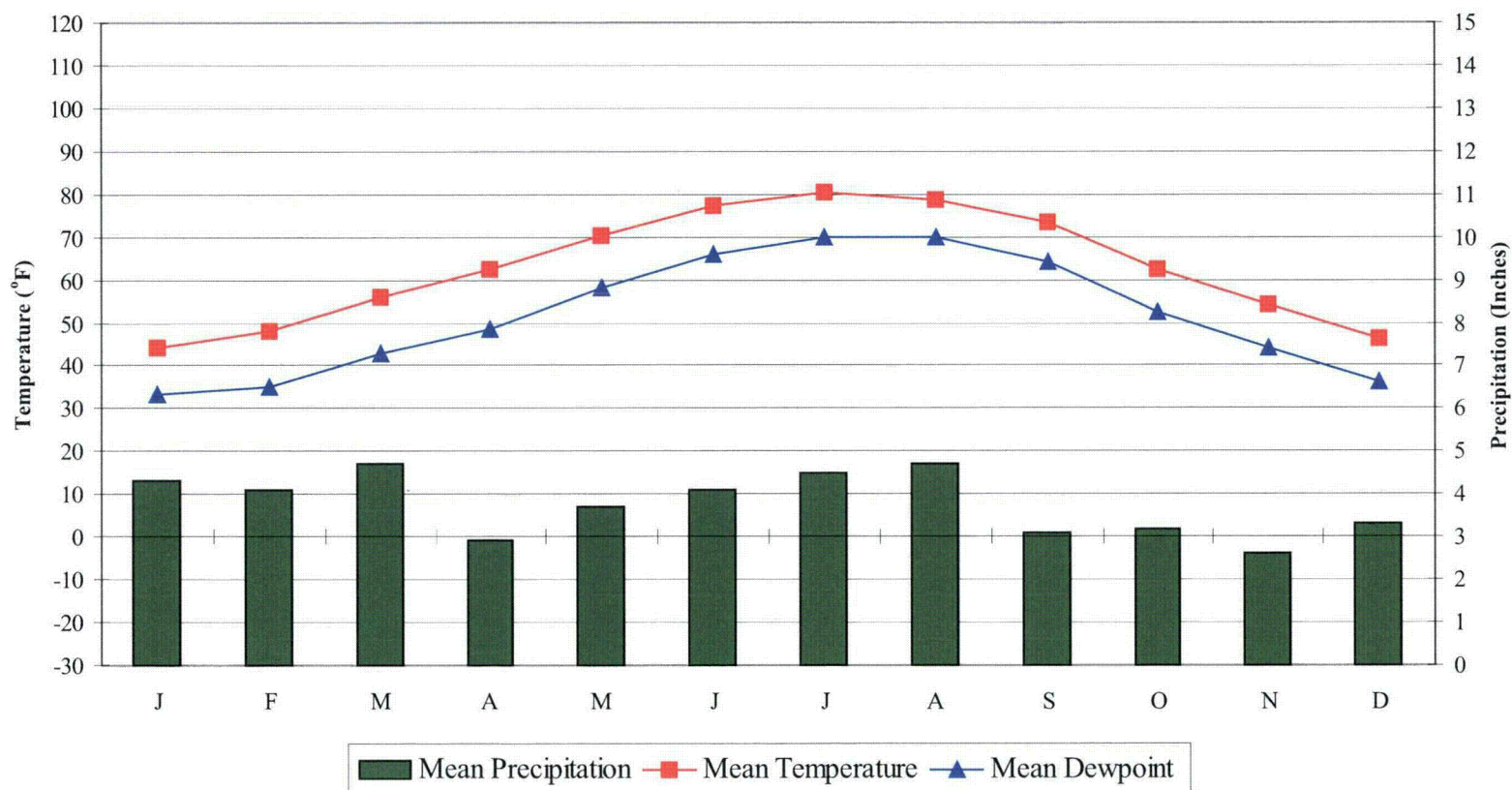
Weather Region	Rain Rate 100 Year Recurrence (in./hr)	Basic Wind Speed 3 sec gust @ 33 ft 50 Year Recurrence (mph)	Ventilation Cooling Load Index (Ton-hr/cfm/yr) Base 75°F-RH 60% Latent + Sensible
11	4.0	90	4.7 + 1.5
Ground Water Temperature (°F) 50 Foot Depth *	Frost Depth 50 Year Recurrence (in.)	Ground Snow Load 50 Year Recurrence (lb/ft²)	Average Annual Freeze-Thaw Cycles (#)
65.3	0	7	40

*Note: Temperatures at greater depths can be estimated by adding 1.5°F per 100 feet additional depth.

AUGUSTA/BUSH FIELD GA

WMO No. 722180

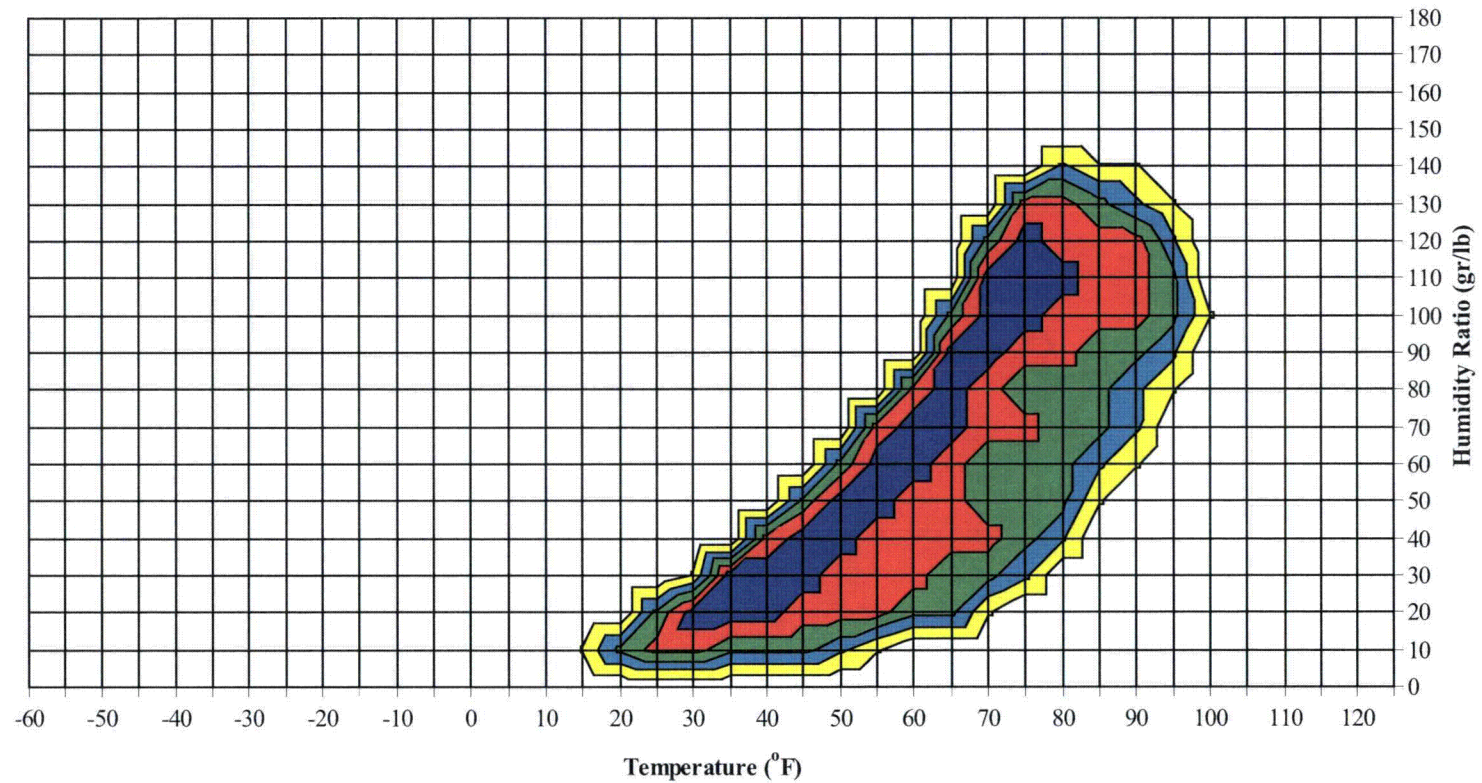
Average Annual Climate



AUGUSTA/BUSH FIELD GA

WMO No. 722180

Long Term Psychrometric Summary

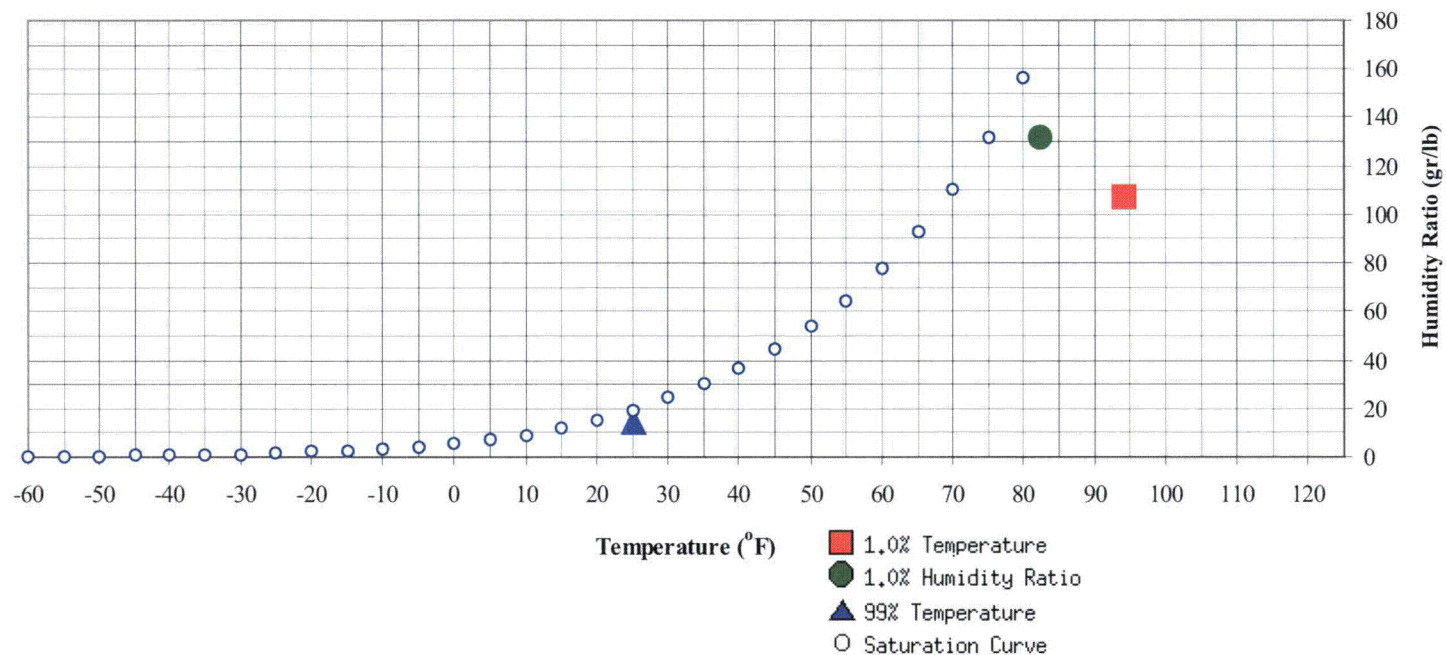


- 50% of all observations
- 80% of all observations
- 95% of all observations
- 97.5% of all observations
- 99% of all observations

AUGUSTA/BUSH FIELD GA

WMO No. 722180

Psychrometric Summary of Peak Design Values



99% Dry Bulb	(°F)	MCHR (gr/lb)	Enthalpy (btu/lb)	1.0% Humidity Ratio	(gr/lb)	MCDB (°F)	MCWB (°F)	MC Dewpt (°F)	Enthalpy (btu/lb)
	25	14	8.1		131.6	82.4	77	75	40.4

1.0% Dry Bulb	(°F)	MCHR (gr/lb)	MCWB (°F)	Enthalpy (btu/lb)
	94	106.8	76.1	39.4

AUGUSTA/BUSH FIELD GA

WMO No. 722180

Dry-Bulb Temperature Hours For An Average Year (Sheet 1 of 5)

Period of Record = 1973 to 1996

Temperature Range (°F)	January					February					March				
	Hour Group (LST)			Total Obs	M C W B (°F)	Hour Group (LST)			Total Obs	M C W B (°F)	Hour Group (LST)			Total Obs	M C W B (°F)
	01 To 08	09 To 16	17 To 00			01 To 08	09 To 16	17 To 00			01 To 08	09 To 16	17 To 00		
105 / 109															
100 / 104															
95 / 99															
90 / 94															
85 / 89							0		0	66.0		2	0	2	66.0
80 / 84							2	0	2	65.5		12	4	16	64.0
75 / 79		2	0	2	63.5		7	2	8	62.3	0	24	10	34	61.3
70 / 74		7	1	8	61.3	0	16	6	22	58.3	1	34	19	54	59.3
65 / 69	1	15	6	23	57.6	3	25	15	43	56.5	11	39	32	82	57.6
60 / 64	7	24	17	49	55.6	12	30	25	67	54.5	24	42	44	111	55.2
55 / 59	14	29	22	65	51.4	17	27	29	73	50.5	33	32	40	105	51.4
50 / 54	17	38	33	88	46.5	22	31	32	85	46.0	44	28	39	112	47.4
45 / 49	31	44	48	123	42.6	27	30	38	95	41.7	43	18	28	89	43.0
40 / 44	41	38	42	121	38.2	37	26	31	93	37.8	35	10	19	64	38.2
35 / 39	41	25	35	101	33.6	36	17	22	75	33.6	32	4	8	45	34.2
30 / 34	36	14	23	72	29.0	32	8	15	55	29.4	17	1	2	20	29.9
25 / 29	33	7	13	52	24.9	23	3	7	33	24.8	6	0	1	7	25.6
20 / 24	19	3	5	27	20.3	13	1	2	16	20.6	2	0	0	2	20.5
15 / 19	8	0	1	9	15.9	3	0	0	4	16.3	0			0	16.3
10 / 14	1	0	0	2	10.3	1			1	11.8	0			0	12.0
5 / 9	0	0	0	0	4.1										
0 / 4	0	0		0	1.2										
-5 / -1	0			0	-2.0										

Caution: This summary reflects the typical distribution of temperature in a typical year. It does not reflect the typical moisture distribution. Because wet bulb temperatures are averaged, this summary understates the annual moisture load. For accurate moisture load data, see the long-term humidity summary and the ventilation and infiltration load pages in this manual.

AUGUSTA/BUSH FIELD GA

WMO No. 722180

Dry-Bulb Temperature Hours For An Average Year (Sheet 2 of 5)
Period of Record = 1973 to 1996

Temperature Range (°F)	April					May					June				
	Hour Group (LST)			Total Obs	M C W B (°F)	Hour Group (LST)			Total Obs	M C W B (°F)	Hour Group (LST)			Total Obs	M C W B (°F)
	01 To 08	09 To 16	17 To 00			01 To 08	09 To 16	17 To 00			01 To 08	09 To 16	17 To 00		
105 / 109															
100 / 104												2	1	3	76.3
95 / 99		0		0	70.0		0		0	74.6		12	4	16	75.2
90 / 94		1	0	1	66.8		11	3	14	71.3		41	14	55	74.2
85 / 89		15	4	19	66.0		43	14	57	69.6	0	68	27	95	72.8
80 / 84		30	12	42	64.6	0	61	27	88	67.9	5	62	40	107	71.5
75 / 79	0	42	19	61	62.5	4	58	37	100	66.1	30	36	59	125	70.7
70 / 74	3	46	33	81	60.3	30	42	59	131	65.2	99	14	66	180	69.0
65 / 69	21	43	47	111	58.7	69	20	54	143	63.1	70	2	22	95	65.0
60 / 64	42	32	47	121	56.3	61	7	28	96	59.0	24	0	6	31	59.7
55 / 59	47	18	35	100	52.3	39	2	16	58	54.4	10		2	12	55.6
50 / 54	49	9	23	81	48.2	27	1	8	36	50.3	2		0	2	51.3
45 / 49	39	3	13	56	44.0	15	0	1	17	46.0	0			0	47.3
40 / 44	24	0	6	30	39.9	3			3	41.8					
35 / 39	13		1	14	35.2	0			0	37.7					
30 / 34	3		0	3	31.5										
25 / 29	0			0	26.9										
20 / 24															
15 / 19															
10 / 14															
5 / 9															
0 / 4															
-5 / -1															

Caution: This summary reflects the typical distribution of temperature in a typical year. It does not reflect the typical moisture distribution. Because wet bulb temperatures are averaged, this summary understates the annual moisture load. For accurate moisture load data, see the long-term humidity summary and the ventilation and infiltration load pages in this manual.

AUGUSTA/BUSH FIELD GA

WMO No. 722180

Dry-Bulb Temperature Hours For An Average Year (Sheet 3 of 5)

Period of Record = 1973 to 1996

Temperature Range (°F)	July					August					September				
	Hour Group (LST)			Total Obs	M C W B (°F)	Hour Group (LST)			Total Obs	M C W B (°F)	Hour Group (LST)			Total Obs	M C W B (°F)
	01 To 08	09 To 16	17 To 00			01 To 08	09 To 16	17 To 00			01 To 08	09 To 16	17 To 00		
105 / 109		0	0	0	78.0		0		0	77.7					
100 / 104		5	1	6	76.6		1	0	2	76.9		0		0	76.0
95 / 99		28	8	36	76.7		16	3	19	76.8		4	0	4	75.4
90 / 94		67	23	90	76.2	0	53	14	67	76.2		25	5	30	75.0
85 / 89	1	69	33	103	75.3	0	73	29	101	75.1		52	14	65	73.2
80 / 84	13	49	50	111	74.2	4	57	44	105	74.2	0	60	26	86	71.4
75 / 79	65	23	77	165	72.8	47	35	83	165	73.1	11	45	52	109	70.5
70 / 74	134	8	51	193	70.3	143	10	65	217	70.4	86	31	77	194	68.8
65 / 69	29	1	6	36	65.9	40	2	12	54	66.0	71	13	35	120	64.6
60 / 64	3	0	0	3	61.2	12	0	1	13	61.5	34	5	20	59	59.6
55 / 59	0			0	55.0	0	0	0	1	56.9	22	2	10	34	55.0
50 / 54											11	0	3	15	50.7
45 / 49											5		0	5	46.2
40 / 44											0			0	43.0
35 / 39															
30 / 34															
25 / 29															
20 / 24															
15 / 19															
10 / 14															
5 / 9															
0 / 4															
-5 / -1															

Caution: This summary reflects the typical distribution of temperature in a typical year. It does not reflect the typical moisture distribution. Because wet bulb temperatures are averaged, this summary understates the annual moisture load. For accurate moisture load data, see the long-term humidity summary and the ventilation and infiltration load pages in this manual.

AUGUSTA/BUSH FIELD GA

WMO No. 722180

Dry-Bulb Temperature Hours For An Average Year (Sheet 4 of 5)

Period of Record = 1973 to 1996

Temperature Range (°F)	October					November					December				
	Hour Group (LST)			Total Obs	M C W B (°F)	Hour Group (LST)			Total Obs	M C W B (°F)	Hour Group (LST)			Total Obs	M C W B (°F)
	01 To 08	09 To 16	17 To 00			01 To 08	09 To 16	17 To 00			01 To 08	09 To 16	17 To 00		
105 / 109															
100 / 104															
95 / 99															
90 / 94		2	0	2	74.2										
85 / 89		13	2	14	70.7										
80 / 84	0	34	6	41	67.9		6	0	6	67.1		0		0	66.7
75 / 79	1	47	15	63	65.2		23	3	26	64.7		6	1	7	66.0
70 / 74	13	51	36	99	63.9	2	36	15	54	62.6	1	14	4	19	62.9
65 / 69	28	45	43	116	61.1	17	37	28	82	60.7	6	19	10	35	59.9
60 / 64	43	28	47	118	57.8	24	39	36	100	56.4	10	27	19	56	55.7
55 / 59	42	17	39	98	53.7	29	35	36	99	51.8	15	38	29	81	51.1
50 / 54	39	8	30	76	49.6	29	31	36	96	47.3	23	39	36	98	46.8
45 / 49	40	3	21	64	45.2	36	18	36	90	43.5	34	42	42	117	42.7
40 / 44	25	0	7	33	40.9	31	9	25	65	39.3	35	31	43	109	38.4
35 / 39	14	0	2	16	36.4	31	4	17	51	35.0	36	17	33	87	33.9
30 / 34	2		0	3	31.4	29	1	7	36	30.7	37	9	19	66	29.6
25 / 29	1			1	27.4	12	0	1	13	26.5	33	2	11	46	25.2
20 / 24						1	0		1	22.6	13	1	3	17	20.9
15 / 19											3	0	1	4	15.9
10 / 14											1	0	0	1	10.4
5 / 9											0	0		0	6.2
0 / 4															
-5 / -1															

Caution: This summary reflects the typical distribution of temperature in a typical year. It does not reflect the typical moisture distribution. Because wet bulb temperatures are averaged, this summary understates the annual moisture load. For accurate moisture load data, see the long-term humidity summary and the ventilation and infiltration load pages in this manual.

AUGUSTA/BUSH FIELD GA

WMO No. 722180

Dry-Bulb Temperature Hours For An Average Year (Sheet 5 of 5)

Period of Record = 1973 to 1996

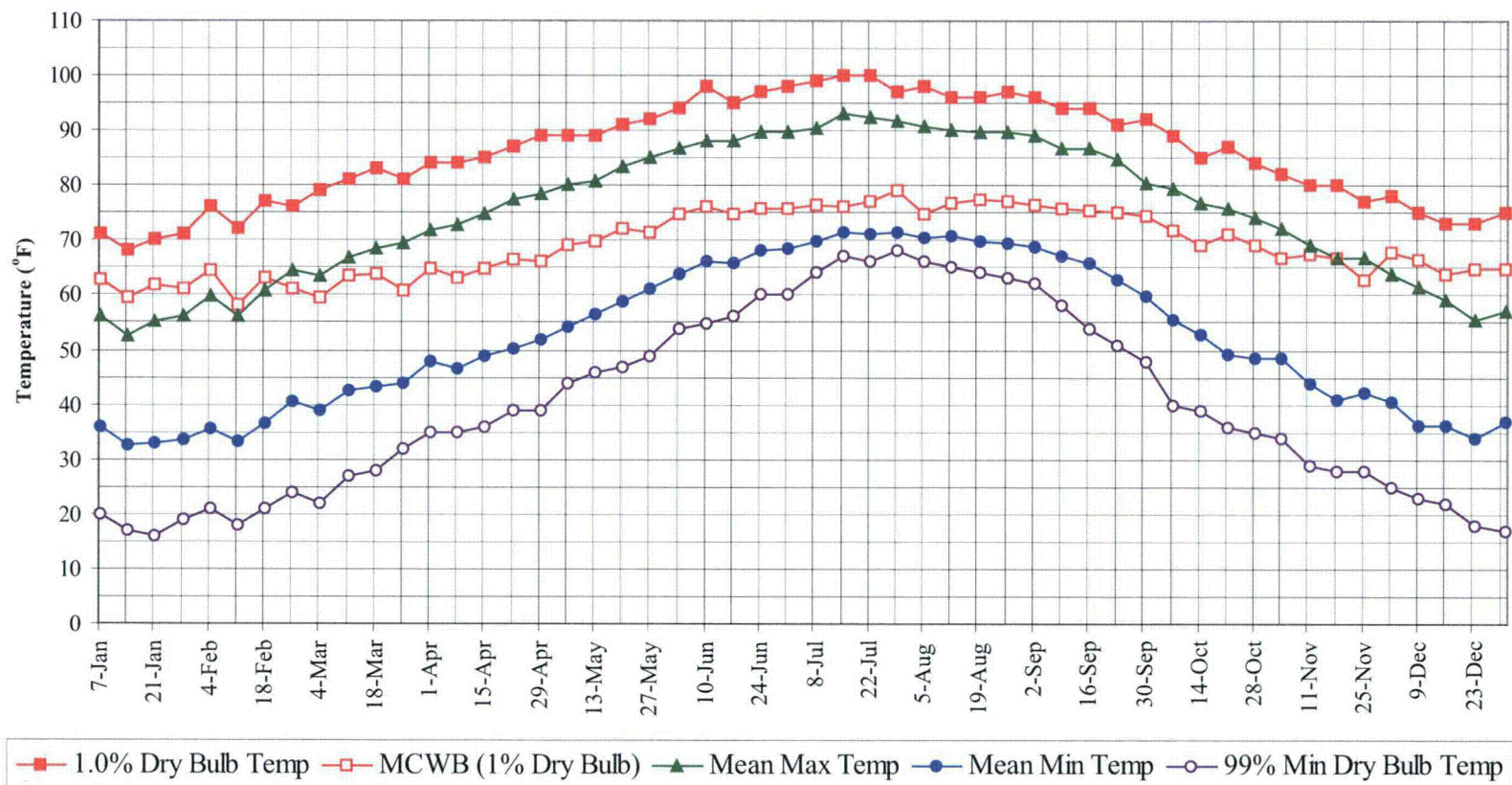
Annual Totals					
Temperature Range (°F)	Hour Group (LST)			Total Obs	M C W B (°F)
	01 To 08	09 To 16	17 To 00		
105 / 109		0	0	0	77.8
100 / 104		8	2	10	76.6
95 / 99		60	15	75	76.3
90 / 94	0	199	59	258	75.3
85 / 89	1	332	122	456	73.2
80 / 84	22	372	208	601	70.9
75 / 79	159	346	358	862	69.3
70 / 74	510	309	430	1250	67.0
65 / 69	366	261	310	937	61.7
60 / 64	296	237	291	823	56.9
55 / 59	270	201	257	728	52.2
50 / 54	264	186	241	691	47.6
45 / 49	272	158	229	659	43.2
40 / 44	233	115	173	521	38.6
35 / 39	205	68	119	391	34.1
30 / 34	157	33	66	256	29.6
25 / 29	108	12	34	154	25.2
20 / 24	49	5	11	65	20.6
15 / 19	15	1	2	17	16.0
10 / 14	3	0	1	4	10.6
5 / 9	1	0	0	1	5.3
0 / 4	0	0		0	1.2
-5 / -1	0			0	-2.0

Caution: This summary reflects the typical distribution of temperature in a typical year. It does not reflect the typical moisture distribution. Because wet bulb temperatures are averaged, this summary understates the annual moisture load. For accurate moisture load data, see the long-term humidity summary and the ventilation and infiltration load pages in this manual.

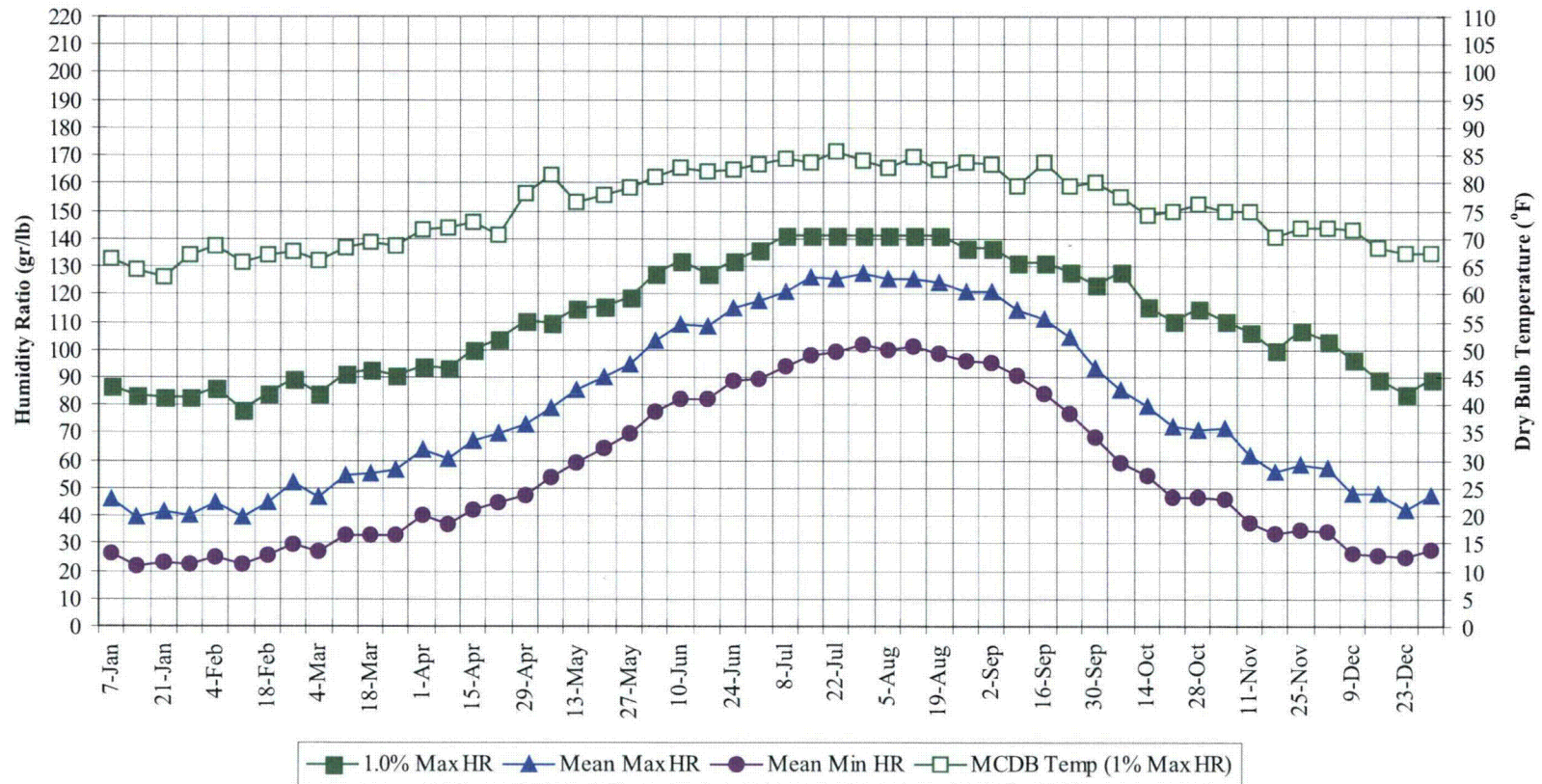
AUGUSTA/BUSH FIELD GA

WMO No. 722180

Annual Summary of Temperatures



Long Term Humidity and Dry Bulb Temperature Summary



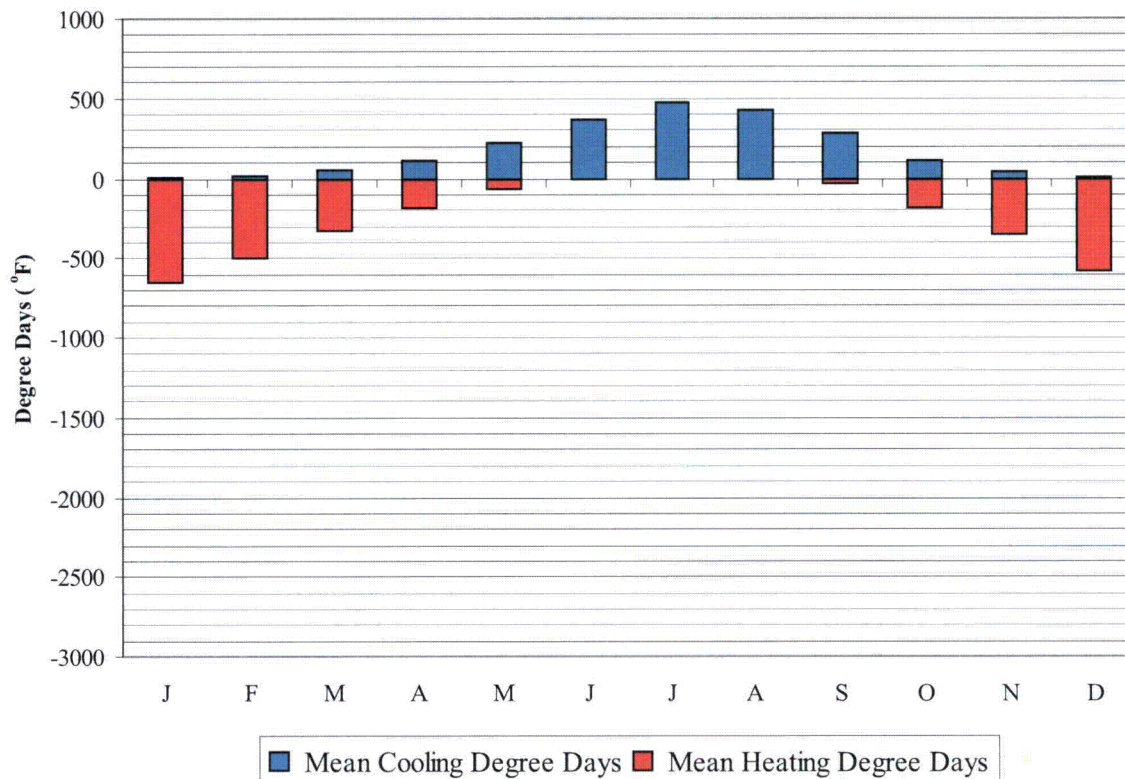
AUGUSTA/BUSH FIELD GA
WMO No. 722180
Long Term Dry Bulb Temperature and Humidity Summary

Week Ending	1.0% Temp (°F)	MCWB @ 1% Temp (°F)	Mean Max Temp (°F)	Mean Min Temp (°F)	99% Temp (°F)	1.0% HR (gr/lb)	MCDB @ 1% HR (°F)	Mean Max HR (gr/lb)	Mean Min HR (gr/lb)
7-Jan	71.0	62.9	56.2	35.8	20.0	86.8	66.2	46.2	26.4
14-Jan	68.0	59.4	52.5	32.5	17.0	83.3	64.2	39.2	21.9
21-Jan	70.0	61.8	55.0	33.0	16.0	82.6	62.9	41.1	22.9
28-Jan	71.0	61.1	56.2	33.4	19.0	82.6	67.1	40.2	22.2
4-Feb	76.0	64.4	59.8	35.4	21.0	86.1	68.8	44.9	25.2
11-Feb	72.0	58.2	56.3	33.3	18.0	78.4	65.6	39.5	22.3
18-Feb	77.0	63.3	60.8	36.7	21.0	84.0	67.1	44.7	25.9
25-Feb	76.0	61.0	64.3	40.5	24.0	89.6	67.5	51.9	29.5
4-Mar	79.0	59.5	63.4	38.8	22.0	84.0	65.9	46.8	26.9
11-Mar	81.0	63.3	66.7	42.6	27.0	91.0	68.3	54.7	33.1
18-Mar	83.0	63.9	68.6	43.2	28.0	92.4	69.4	55.4	32.6
25-Mar	81.0	60.9	69.4	44.0	32.0	90.3	68.8	56.3	32.5
1-Apr	84.0	65.0	71.9	47.8	35.0	93.8	71.5	63.9	40.3
8-Apr	84.0	63.2	72.7	46.6	35.0	93.1	71.9	60.2	36.5
15-Apr	85.0	64.8	74.9	48.8	36.0	100.1	72.8	67.1	41.8
22-Apr	87.0	66.6	77.5	50.1	39.0	103.6	70.7	69.9	44.9
29-Apr	89.0	66.1	78.5	51.8	39.0	110.6	78.1	73.1	47.0
6-May	89.0	69.1	80.0	54.2	44.0	109.9	81.4	79.1	53.6
13-May	89.0	69.8	80.9	56.4	46.0	114.8	76.6	85.4	58.9
20-May	91.0	72.0	83.3	58.9	47.0	115.5	77.7	89.9	64.0
27-May	92.0	71.4	85.0	61.1	49.0	119.0	79.1	94.8	69.7
3-Jun	94.0	74.8	86.7	63.8	54.0	127.4	81.2	102.9	77.6
10-Jun	98.0	76.1	88.2	66.0	55.0	132.3	82.8	108.9	82.4
17-Jun	95.0	74.6	88.0	65.9	56.0	127.4	82.2	108.2	82.3
24-Jun	97.0	75.8	89.9	68.0	60.0	132.3	82.4	114.9	88.8
1-Jul	98.0	75.7	89.8	68.4	60.0	135.8	83.3	117.3	89.4
8-Jul	99.0	76.4	90.5	69.9	64.0	141.4	84.3	121.1	93.8
15-Jul	100.0	75.9	93.2	71.5	67.0	141.4	83.8	125.8	97.7
22-Jul	100.0	77.1	92.3	71.0	66.0	141.4	85.7	125.5	99.2
29-Jul	97.0	79.0	91.7	71.5	68.0	141.4	84.0	127.4	101.6
5-Aug	98.0	74.7	90.8	70.6	66.0	141.4	82.8	125.6	99.9
12-Aug	96.0	76.8	90.1	70.7	65.0	141.4	84.7	125.2	101.4
19-Aug	96.0	77.4	89.7	69.8	64.0	141.4	82.6	124.0	98.8
26-Aug	97.0	77.2	89.8	69.4	63.0	136.5	83.7	121.1	96.1
2-Sep	96.0	76.3	89.1	68.8	62.0	136.5	83.4	121.0	95.0
9-Sep	94.0	75.7	86.8	67.2	58.0	131.6	79.3	114.5	90.4
16-Sep	94.0	75.6	86.7	65.7	54.0	131.6	83.7	111.1	84.2
23-Sep	91.0	75.1	84.9	62.9	51.0	128.1	79.3	104.2	77.0
30-Sep	92.0	74.5	80.4	59.8	48.0	123.2	80.2	93.4	68.4
7-Oct	89.0	71.9	79.5	55.5	40.0	128.1	77.4	85.6	58.9
14-Oct	85.0	69.1	76.6	52.9	39.0	115.5	74.1	79.2	54.2
21-Oct	87.0	71.3	75.9	49.0	36.0	110.6	75.0	72.4	46.9
28-Oct	84.0	69.0	74.1	48.6	35.0	114.8	76.1	70.9	46.3
4-Nov	82.0	66.9	72.3	48.5	34.0	110.6	74.9	71.6	46.0
11-Nov	80.0	67.5	69.0	44.0	29.0	106.4	74.9	62.0	37.5
18-Nov	80.0	66.9	66.9	40.8	28.0	100.1	70.1	55.6	33.6
25-Nov	77.0	62.9	66.9	42.3	28.0	107.1	71.8	58.5	34.9
2-Dec	78.0	67.7	63.7	40.6	25.0	102.9	72.0	57.1	34.0
9-Dec	75.0	66.4	61.5	36.1	23.0	96.6	71.7	47.8	26.3
16-Dec	73.0	63.8	59.2	36.2	22.0	89.6	68.2	47.9	25.7
23-Dec	73.0	64.7	55.6	33.8	18.0	84.0	67.5	41.9	24.8
31-Dec	75.0	64.9	57.3	36.8	17.0	89.6	67.4	47.4	27.6

AUGUSTA/BUSH FIELD GA

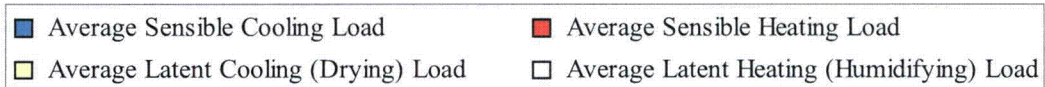
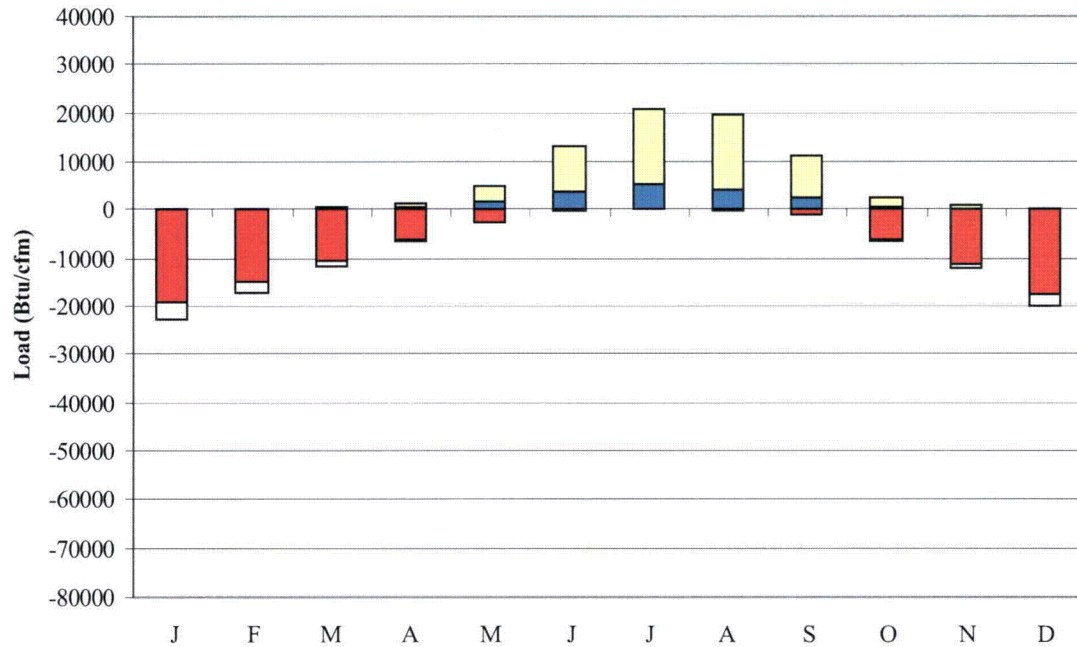
WMO No. 722180

Degree Days, Heating and Cooling
(Base 65°F)



	Mean Cooling Degree Days (°F)	Mean Heating Degree Days (°F)
JAN	5	656
FEB	14	495
MAR	50	333
APR	108	180
MAY	227	62
JUN	370	8
JUL	475	0
AUG	423	1
SEP	281	29
OCT	110	188
NOV	39	356
DEC	11	586
ANN	2112	2894

Average Ventilation and Infiltration Loads
(Outside Air vs. 75°F, 60% RH summer; 68°F, 30% RH winter)



	Average Sensible Cooling Load (Btu/cfm)	Average Sensible Heating Load (Btu/cfm)	Average Latent Cooling Load (Btu/cfm)	Average Latent Heating Load (Btu/cfm)
JAN	3	-19342	52	-3268
FEB	25	-14839	71	-2548
MAR	195	-10558	187	-1243
APR	667	-6126	615	-384
MAY	1780	-2435	3274	-17
JUN	3626	-436	9439	-1
JUL	5108	-41	15526	0
AUG	4106	-114	15362	0
SEP	2308	-1216	8794	-1
OCT	611	-6365	2030	-140
NOV	94	-11139	752	-1074
DEC	12	-17450	187	-2593
ANN	18535	-90061	56289	-11269

Average Annual Solar Radiation – Nearest Available Site

(Source: National Renewable Energy Laboratory, Golden CO, 1995)

City: AUGUSTA
 State: GA
 WBAN No: 3820
 Lat(N): 33.37
 Long(W): 81.97
 Elev(ft): 148

Stn Type: Secondary
 SHADING GEOMETRY IN DIMENSIONLESS UNITS
 Window: 1
 Overhang: 1.012
 Vert Gap: 0.661

AVERAGE INCIDENT SOLAR RADIATION (Btu/sq. ft./day), Percentage Uncertainty = 9		Jan	Feb	Mar	Apr	May	Jun	Jul	Aug	Sep	Oct	Nov	Dec	Year
HORIZ	Global	830	1110	1430	1800	1940	2010	1930	1750	1520	1290	940	770	1450
	Std Dev	65	102	122	119	122	144	155	147	124	114	73	59	45
	Minimum	710	970	1200	1580	1630	1730	1430	1430	1290	1080	720	680	1340
	Maximum	1020	1340	1620	2070	2160	2260	2250	2060	1780	1530	1090	910	1540
	Diffuse	360	450	580	680	820	880	890	820	690	490	380	330	620
Clear Day	Global	1170	1510	1930	2310	2530	2590	2520	2310	1980	1560	1210	1060	1890
NORTH	Global	240	300	370	460	560	620	590	490	410	330	260	220	400
	Diffuse	240	300	370	440	500	540	520	480	410	330	260	220	380
Clear Day	Global	220	280	350	430	580	690	630	490	390	310	240	210	400
EAST	Global	520	680	840	1020	1050	1060	1030	960	860	770	590	490	820
	Diffuse	280	360	460	540	610	640	630	580	510	410	320	260	470
Clear Day	Global	810	1000	1190	1330	1380	1370	1340	1270	1150	980	810	740	1110
SOUTH	Global	1140	1220	1120	960	750	670	690	820	1010	1270	1230	1160	1000
	Diffuse	380	440	500	540	550	550	560	560	550	490	420	360	490
Clear Day	Global	2000	1950	1660	1200	860	720	770	1030	1420	1750	1900	1940	1430
WEST	Global	540	700	850	1020	1040	1040	980	930	860	790	600	500	820
	Diffuse	290	360	460	560	620	640	630	590	520	420	320	260	470
Clear Day	Global	810	1000	1190	1330	1380	1370	1340	1270	1150	980	810	740	1110

Average Annual Solar Heat and Illumination – Nearest Available Site

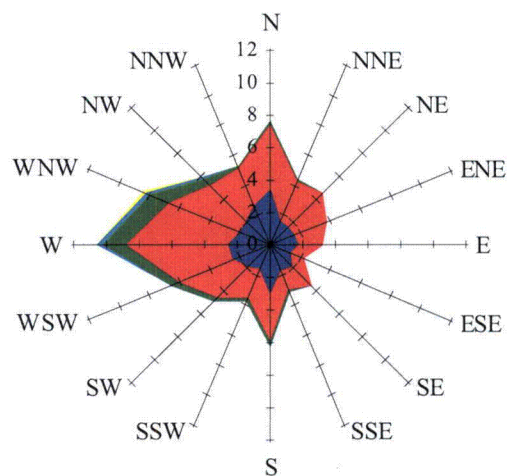
(Source: National Renewable Energy Laboratory, Golden CO, 1995)

		AVERAGE TRANSMITTED SOLAR RADIATION (Btu/sq. ft./day) FOR DOUBLE GLAZING, Percentage Uncertainty = 9												
		Jan	Feb	Mar	Apr	May	Jun	Jul	Aug	Sep	Oct	Nov	Dec	Year
HORIZ	Unshaded	560	770	1020	1310	1420	1470	1400	1270	1090	920	640	510	1030
NORTH	Unshaded	160	210	260	310	370	400	380	330	290	230	180	150	270
	Shaded	140	180	220	270	310	340	330	290	250	200	150	130	230
EAST	Unshaded	360	480	600	730	740	760	730	680	610	540	410	340	580
	Shaded	310	400	480	580	580	590	570	530	480	440	340	290	470
SOUTH	Unshaded	850	880	750	590	450	410	420	510	660	890	910	870	680
	Shaded	790	700	390	310	330	330	330	330	330	610	810	840	510
WEST	Unshaded	380	490	610	730	740	740	690	660	610	560	420	350	580
	Shaded	320	410	490	580	580	570	540	520	490	460	350	290	470

		AVERAGE INCIDENT ILLUMINANCE (klux-hr) FOR MOSTLY CLEAR AND MOSTLY CLOUDY CONDITIONS, Percentage Uncertainty = 9									
		March					June				
		9am	11am	1pm	3pm	5pm	9am	11am	1pm	3pm	5pm
HORIZ.	M.Clear	34	74	90	77	40	36	79	101	100	74
	M.Cloudy	20	46	56	49	25	23	52	76	76	52
NORTH	M.Clear	9	14	16	14	10	23	17	17	18	17
	M.Cloudy	8	16	18	16	10	14	17	20	19	17
EAST	M.Clear	73	67	19	14	10	66	78	42	18	17
	M.Cloudy	26	35	19	16	10	28	44	35	19	17
SOUTH	M.Clear	30	64	77	66	35	11	20	35	35	19
	M.Cloudy	14	33	43	37	18	10	19	30	30	18
WEST	M.Clear	9	14	16	62	76	11	17	17	44	75
	M.Cloudy	8	16	18	36	32	10	17	20	36	47
M.Clear	(% hrs)	40	39	37	36	38	43	44	38	34	37
		Sept					Dec				
		9am	11am	1pm	3pm	5pm	9am	11am	1pm	3pm	5pm
HORIZ.	M.Clear	20	64	88	86	58	15	48	59	44	11
	M.Cloudy	12	38	61	61	39	8	27	34	26	7
NORTH	M.Clear	7	15	17	17	14	5	10	12	10	4
	M.Cloudy	5	15	19	19	14	4	11	13	10	3
EAST	M.Clear	49	75	40	17	14	44	50	12	10	4
	M.Cloudy	15	34	30	19	14	11	21	13	10	3
SOUTH	M.Clear	12	46	66	65	41	35	80	92	76	27
	M.Cloudy	6	24	42	43	25	9	29	37	30	8
WEST	M.Clear	7	15	17	46	73	5	10	15	52	36
	M.Cloudy	5	15	19	33	39	4	11	13	23	10
M.Clear	(% hrs)	42	45	39	36	39	39	39	40	39	40

Wind Summary - December, January, and February

Labels of Percent Frequency on North Axis

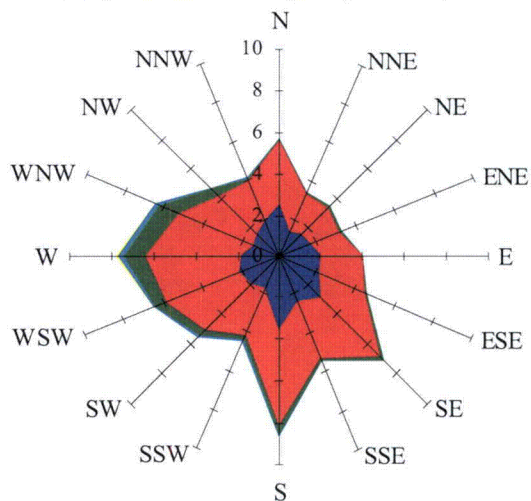


>34 knots 25-34 knots 15-24 knots 6-14 knots 1-5 knots

Percent Calm = 17.76

Wind Summary - March, April, and May

Labels of Percent Frequency on North Axis

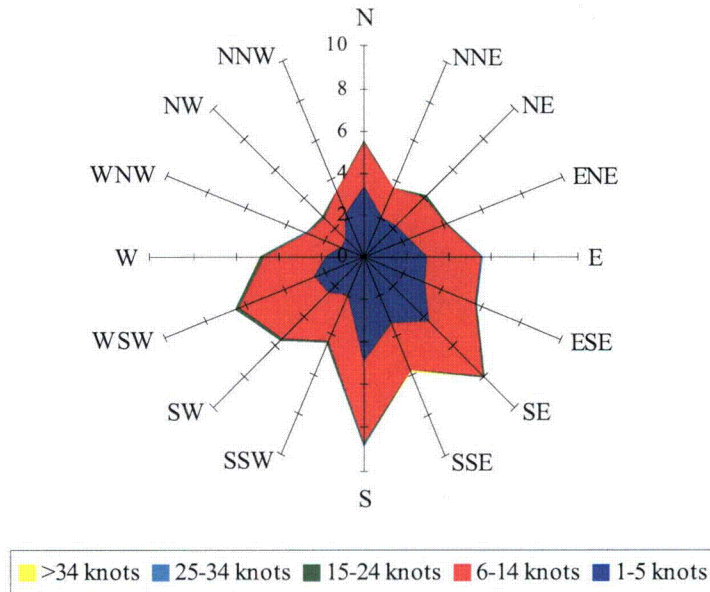


>34 knots 25-34 knots 15-24 knots 6-14 knots 1-5 knots

Percent Calm = 16.30

Wind Summary - June, July, and August

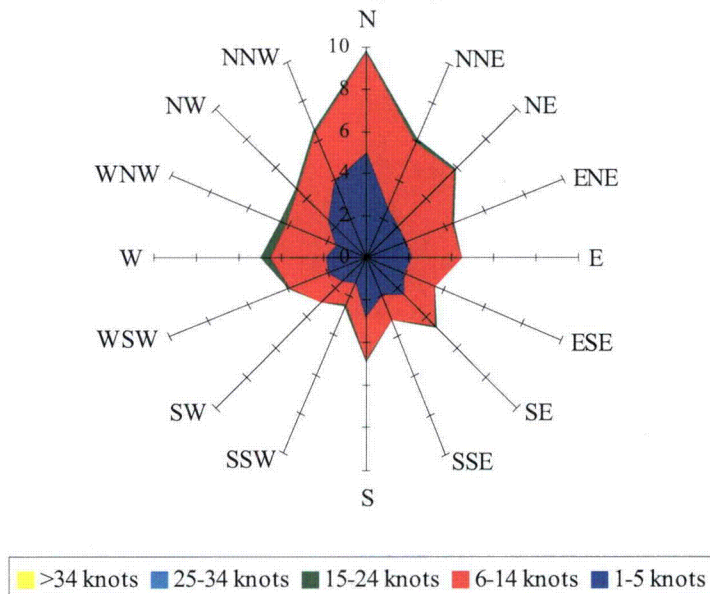
Labels of Percent Frequency on North Axis



Percent Calm = 19.58

Wind Summary - September, October, and November

Labels of Percent Frequency on North Axis



Percent Calm = 23.43