

00840 PID-1-RC-B20840

20841  
LOOP 1

20842  
LOOP 2

20846  
PRESSURIZER


20845  
REACTOR VESSEL

20843  
LOOP 3

20844  
LOOP 4

- NOTES:
1. WORK THIS DRAWING WITH DRAWINGS 20841 THROUGH 20845 & 20846.
  2. ALL LINES, EQUIPMENT, COMPONENTS, AND INSTRUMENTS HAVE SYSTEM PREFIX RC UNLESS OTHERWISE NOTED.
  3. DELETED.
  4.  $\Delta$  - INDICATES REVISION LEVEL.

6	1/15/92	DWS		BCL	WRS	BCL	INCORP DCR 900003 CA#8
5	12/16/91	RMC		FCB	WRS	BCL	INCORP. HMOO 91-011 CAN
4	2/22/88	GPH	JM	BCL	DWS	RRC	TRANSFERRED GENERAL NOTES AND DETAILS A, B & C TO NEW DRAWING RC-B20848. REVISED NOTE 1. DELETED NOTE 2.
3	1/24/87	HPW	TAK	WRS	BCL	VWS	ADDED NOTE 4. REVISED PER LATEST SYSTEM DRAWINGS
2	3/2/86	TAK	WRS	DWS	ASK	WFD	ISSUED FOR OPERATIONS
1	7/29/85	GFS	GFS	TAK	PEF	WFD	GENERAL REVISION
0	2/28/85	GFS	GFS	JNM	PEF	WFD	ISSUED FOR FIELD VERIFICATION
REV	DATE	DSGN	DRWN	CHKD	CDE	SES	DESCRIPTION

**North Atlantic** Energy Service Corporation

REACTOR COOLANT SYSTEM OVERVIEW

SEABROOK STATION

PID-1-RC-B20840

9763-F-005011	19	CVCS PURIFICATION P&ID
9763-F-005018	18	SAFETY INJECTION SYS. HIGH HEAD P&ID
9763-F-005009	13	SAFETY INJECTION SYS. ACCUMULATORS P&ID
9763-F-005008	17	RESIDUAL HEAT REMOVAL P&ID
9763-F-005007	14	RCS PRESSURIZER P&ID
9763-F-005006	17	RCS LOOP NO. 4 P&ID
9763-F-005005	15	RCS LOOP NO. 3 P&ID
9763-F-005004	16	RCS LOOP NO. 2 P&ID
9763-F-005003	19	RCS LOOP NO. 1 P&ID
9763-F-005002	13	RCS REACTOR VESSEL P&ID
REF. DRAWING NO.	REV	TITLE

PID-1-RC-B20845

REACTOR CONTAINMENT  
BUILDINGTRAIN B  
ELECTRICAL TUNNEL

REACTOR CAVITY

REACTOR VESSEL  
RC-E-1  
SAFETY CLASS 1

REACTOR CAVITY WALL

INSIDE CONTAINMENT  
OUTSIDE CONTAINMENTFOR PAID REFERENCE DRAWINGS, SYMBOLS AND ABBREVIATIONS  
REFER TO DRAWINGS PAID - LEGEND 1 AND PAID - LEGEND 2

- NOTES:
1. ○ INDICATES GENERAL NOTE NUMBER - REFER TO DRAWING 28844 FOR GENERAL NOTES.
  2. WORK THIS DRAWING WITH 28844, 28841, 28842, 28843, 28844, 28845 & 28846.
  3. ALL LINES, EQUIPMENT, COMPONENTS, AND INSTRUMENTATION HAVE SYSTEM PREFIX "RC" UNLESS OTHERWISE NOTED.
  4. VENTS, DRAINS & TEST CONNECTION BREAKS ARE AT THE DOWNSTREAM END OF THE OUTER ISOLATION VALVE PER 1-4001-000011 UNLESS NOTED OTHERWISE.
  5. △ INDICATES REVISION LEVEL.
  6. DELETED
  7. CAPILLARY FILL & VENT VALVE: SEE FP-56416
  8. DURING PLANT OPERATION VENT IS SEALED WITH A SAFETY CLASS 1 BLIND FLANGE
  9. CLASS 1 TO CLASS 2 BOUNDARY AT THE METALLIC O-RING AND THE REACTOR VESSEL FLANGE.
  10. SPOOL TO BE INSTALLED ONLY IN MODES 5, 6 FOR RCS VENTING, REFILLING, AND OTHER SHUTDOWN OPERATIONS.

PORTIONS OF THIS DRAWING ARE  
NUCLEAR SAFETY RELATED

REV	DATE	DSGN	CHKD	CE	DESCRIPTION
13	11/25/86	JNH	WBS	WFL	INCORP. CR 86-0386 REV B8
12	10/25/86	BCS	WBS	WFL	INCORP. DCR 90-0809 DCM-10
11	4/28/89	RWS	DWS	GPH	INCORP. DCR 90-0809 DCM 8
10	4/16/87	BCS	WPM	WFL	INCORP. DCR 90-0805 CA 8
9	11/12/85	WPM	BCS	WFL	INCORP. DCR 92-37 CA 81
8	11/11/89	WBS	PAL	GPH	INCORP. DCR'S 87-136 CA-11 & 88-118 CA-83 REVISED CONTAINMENT TAG LETTERS
7	12/15/87	GPH	DWS	PAS	ADDED NOTE 4 & 9, FLOW RESTRICTOR INDICATOR SYMBOL DELETED NOTE 6 & 8 INC-1 CLASS BOUNDARY, INCOMPLETE ITEMS ECA 85/184902F (CORRECTLY INCORP. PER FP-56402 PREVIOUS REV.)
6	11/04/86	JNH	BCL	WFL	REVISED SEAL TABLE INST. TAP CONNECTIONS PER FP-56402, ADDED CONT. FLAG REF. COORDS AND INCOMPLETE ITEM CORRECTED DRAFTING ERRORS, REMOVED ELECTRICAL SIGNALS PER UAC PAID.
5	3-7-85	GFS	JNH	WFL	ISSUED FOR FIELD VERIFICATION
4					
3					
2					
1					

FPL ENERGY

Seabrook Station

REACTOR COOLANT SYSTEM  
REACTOR VESSEL P & ID

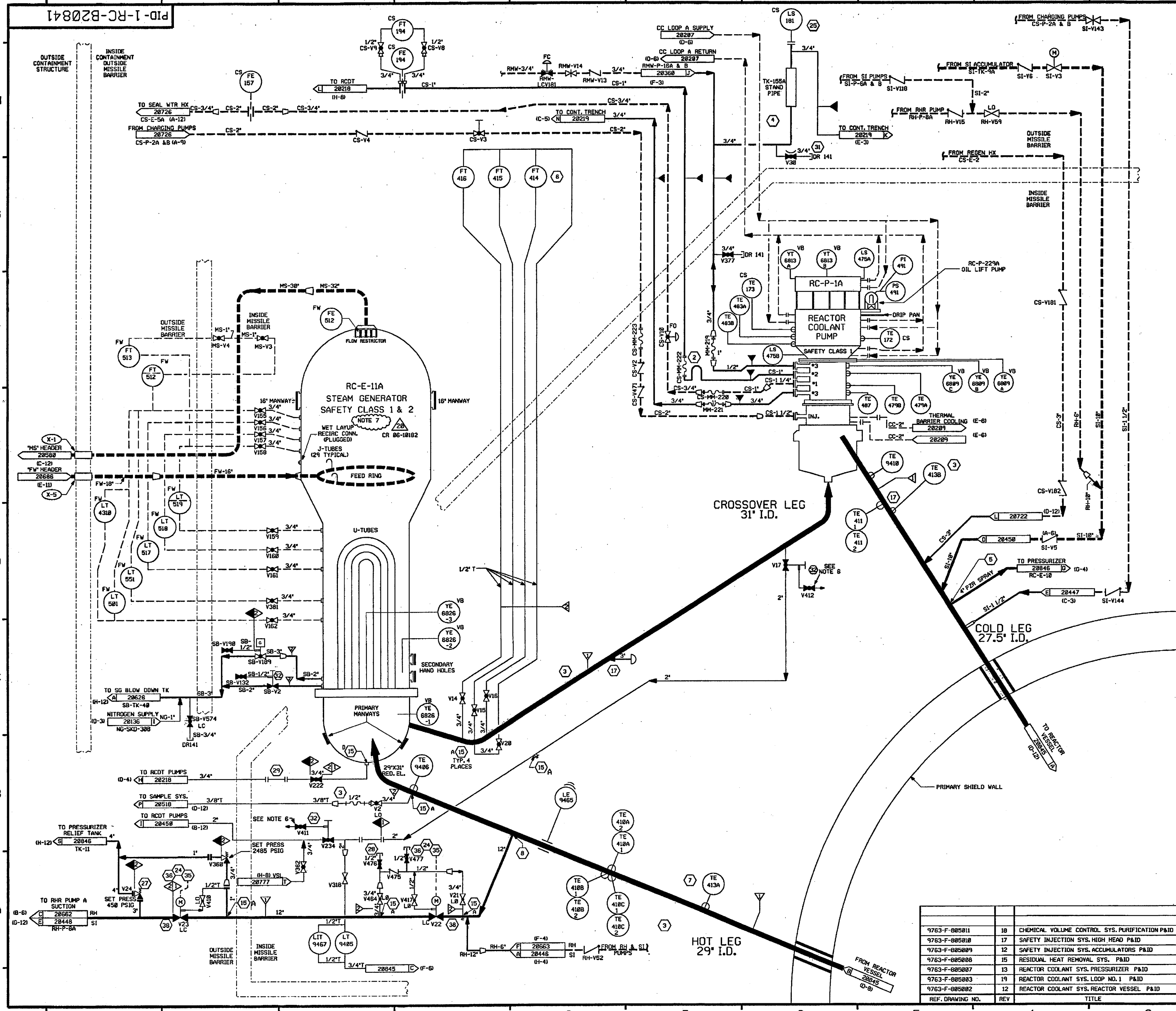
PID- 1-RC-B20845

REV	DATE	DSGN	CHKD	CE	DESCRIPTION
FP-56485	3				RYLIS HEAD PIPING
FP-56484	3				RYLIS HEAD PIPING
FP-56482	1				RYLIS SEAL TABLE TAP & PIPING
FP-56496	1				ITT BARTON TEE IN LINE FILL VALVES
FP-56493	1				HIGH VOLUME SENSOR
FP-56827	1				RYLIS CAPILLARY SCHEMATIC
9763-F-505275	8				INSTRUMENT INSTALLATION - RYLIS
9763-F-895882	13				RCS REACTOR VESSEL P&ID
REF. DRAWING NO.	REV	TITLE			

83/24/86

PID-1-RC-B20841

FOR P&ID REFERENCE DRAWINGS, SYMBOLS AND ABBREVIATIONS  
REFER TO DRAWINGS P&ID - LEGEND 1 AND P&ID - LEGEND 2

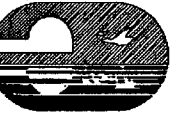


- NOTES:
- INDICATES GENERAL NOTE NUMBER - REFER TO DRAWING 20848 FOR GENERAL NOTES.
  - WORK THIS DRAWING WITH DRAWINGS 20840 AND 20842 THROUGH 20846 AND 20848.
  - ALL LINES, EQUIPMENT, COMPONENTS, AND INSTRUMENTATION HAVE SYSTEM PREFIX RC UNLESS OTHERWISE NOTED.
  - VENT, DRAIN & TEST CONN. CODE BREAKS ARE AT THE DOWNSTREAM END OF THE OUTER ISOLATION VALVE PER 1-NHY-88511, UNLESS NOTED OTHERWISE.
  - INDICATES REVISION LEVEL.
  - VALVE STEM LEAK-OFF ISOLATION VALVES V411 & V412 ARE TO BE MAINTAINED CLOSED. VALVE STEM LEAK-OFF TO BE CONSIDERED INOPERABLE.
  - STEAM GENERATOR SHELL SIDE IS AS SAFETY CLASS 2 AND MANUFACTURED AS ASME CODE CLASS 1.

PORTIONS OF THIS DRAWING ARE  
**NUCLEAR SAFETY RELATED**

20	1-23-07	BCS	JM	QKS	INCORP CR 86-10182 REV. 0
19	8/12/83	BCS	JM	MPW	INCORP CR 83-86508 REV. 0
18	11/2/80	BCS	MPW	JPS	INCORP DCR 80-0010 DCN-00
17	7/3/78	DWS	MPW	DJM	INCORP DCR 78-0446 DCN-00
16	6/3/77	MPW	DWS	JPS	INCORP MM00 97-567 DCN-00
15	11/17/76	BCS	RRC	BMD	INCORP DCR 76-23 CA#11
14	11/11/75	BCL	MPW	JBV	INCORP DCR 75-23 CA#8, 83
13	7/22/74	BCL	DWS	JEV	INCORP DCR 74-14 CA#9
12	11/3/72	DWS	BCL	ES	INCORP DCR 72-0003 CA#0
11	4-14-72	MRB	DWS	JEV	INCORP MM00 91-515 CA#0
10	4/5/71	GPM	FCB	IV	INCORP DCR 71-239 CA#0
9	8/23/71	GPM	JM	WFD	INCORP DCR 71-51 CA#0
8	12/27/69	MRB	APL	WFD	INCORP DCR 69-135 CA-03 & MM00 89-599 CA#0
7	10/14/68	MRB	GPM	RRC	INCORP NCR 68-68 REV 1 ADDED VALVE LEAK-OFF SYMBOL TO CLARIFY CLASS BREAK FOR SB-V189 & V2 PER LE & C P & ID 882003.
6	10/28/67	GPM	BCL	PAG	REV'D PIPING PER EJECTION ISOMETRIC. GENERAL NOTE: THIS NOTE IS A GENERAL NOTE. NOTES MOVED FROM THIS DRAWING TO GENERAL NOTES IN DCR 88-0446. ADDED DETAIL LETTER DESIGNATION FOR FLOW RESTRICTOR ASS'D. SYSTEMS, FLEX HOSES, REDUNDANT CL. BOUNDARY & NOTES.
REV	DATE	DSGN	CHKD	CE	DESCRIPTION

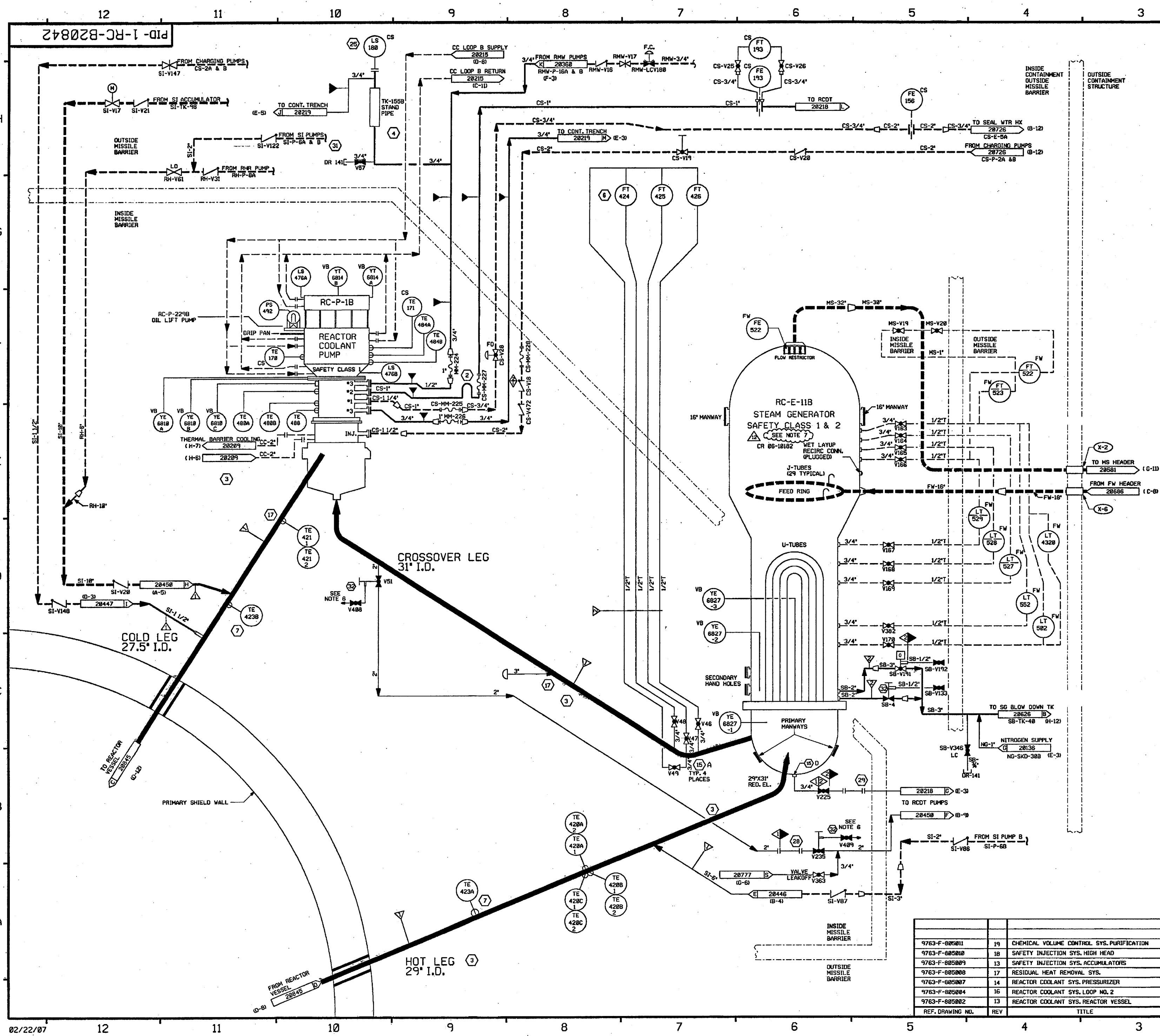
**FPL ENERGY** Seabrook Station



REACTOR COOLANT SYSTEM  
LOOP NO. 1

PID- 1-RC-B20841

REF. DRAWING NO.	REV	TITLE
9763-F-805011	18	CHEMICAL VOLUME CONTROL SYS. PURIFICATION P&ID
9763-F-805010	17	SAFETY INJECTION SYS. HIGH HEAD P&ID
9763-F-805009	12	SAFETY INJECTION SYS. ACCUMULATORS P&ID
9763-F-805008	15	RESIDUAL HEAT REMOVAL SYS. P&ID
9763-F-805007	13	REACTOR COOLANT SYS. PRESSURIZER P&ID
9763-F-805003	19	REACTOR COOLANT SYS. LOOP NO. 1 P&ID
9763-F-805002	12	REACTOR COOLANT SYS. REACTOR VESSEL P&ID



FOR P&ID REFERENCE DRAWINGS, SYMBOLS AND ABBREVIATIONS  
REFER TO DRAWINGS P&ID - LEGEND 1 AND P&ID - LEGEND 2

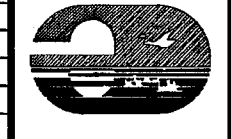
NOTES:

- INDICATES GENERAL NOTE NUMBER - REFER TO DRAWING 20848 FOR GENERAL NOTES.
- WORK THIS DRAWING WITH DRAWINGS 20848, 20841 AND 20843 THROUGH 20846 AND 20848.
- ALL LINES, EQUIPMENT, COMPONENTS, AND INSTRUMENTATION HAVE SYSTEM PREFIX RC UNLESS OTHERWISE NOTED.
- VENT, DRAIN & TEST CONN. CODE BREAKS ARE AT THE DOWNSTREAM END OF THE OUTER ISOLATION VALVE PER 1-NHY-005111 UNLESS NOTED OTHERWISE.
- INDICATES REVISION LEVEL.
- VALVE STEM LEAK-OFF ISOLATION VALVES V408 & V409 ARE TO BE MAINTAINED CLOSED. VALVE STEM LEAK-OFF TO BE CONSIDERED INOPERABLE.
- THE STEAM GENERATOR SHELL SIDE IS ANS SAFETY CLASS 2 AND WAS MANUFACTURED AS ASME CODE CLASS 1.

CR 06-10102

PORTIONS OF THIS DRAWING ARE  
**NUCLEAR SAFETY RELATED**

12	2-23-97	BCS	JFM	222	INCORP CR 06-10102 REV. 0
11	7/22/98	DWS	MPV	DJM	INCORP DCR 910946 DCM#08
10	7/22/98	BCL	DWS	JMC	INCORP DCR 94-14 CA#0
9	11/3/92	DWS	BCL	ES	INCORP DCR 900003 CA#0
8	4/14/92	MRB	DWS	JED	INCORP. MM00 91-515 CA#0
7	12/29/89	MRB	APL	WFO	INCORP. MM00 89-599 CA
6	10/14/88	MRB	GPM	RRC	INCORP. MCR 86-68 REV 1 ADDED VALVE LEAKOFF SYMBOL TO CLARIFY CLASS BREAK FOR SB-V191 & SB-V4 PER LEAC P&ID 005004
5	12/15/87	GPM	DWS	PAG	REV'D PIPING PER ERECTION ISO. NOTES, RENUMBERED NOTES, TRANSFERRED TECH. NOTES TO GENERAL NOTES ON DWG RC-20846. ADDED GENERAL NOTE NO'S, DETAIL LETTER DESIGNATION FOR FLOW RESTRICTOR, CONT. COORD. DELETED DUPLICATED PIPING & INFO. OF ASSOC. SYS'S, FLEX HOSES, REDUNDANT CL. BOUNDARY & NOTES.
4	3/10/87	GPM	DWS	VWS	DELETED Y1742A & B AND NOTE 5, ADDED YES00A, 9 & C, Y1684A & B PER DRAWING 9763-H-006309
3	3/10/87	JDM	QPD	VWS	INCORP DCR 87-0074
2	10/17/86	PAL	BCL	RRC	ADDED 3/4" DIM TO ROOT VLV LINES, CORRECTED TUBING LINE SIZE TO 1/2" WAS 3/4" DELETED REF DWGS N/A REVISED TO CLARIFY DUPLICATIONS OF ASSOC. SYS. ADDED MCR 06/08A TO INCORP. ITEMS LIST, MS-V296 WAS Y296 PER LEAC P&ID ADDED REF LOCA CODE, RELOCATED MS-V19 & MS-V28 IN ERROR ADDED NOTE 12
1	3/21/86	TAK	DWS	WFO	ISSUED FOR OPERATIONS
0	7/16/85	GFS	TAK	WFO	ISSUED FOR FIELD VERIFICATION
REV	DATE	DSGN	CHKD	CE	DESCRIPTION

**FPL ENERGY**

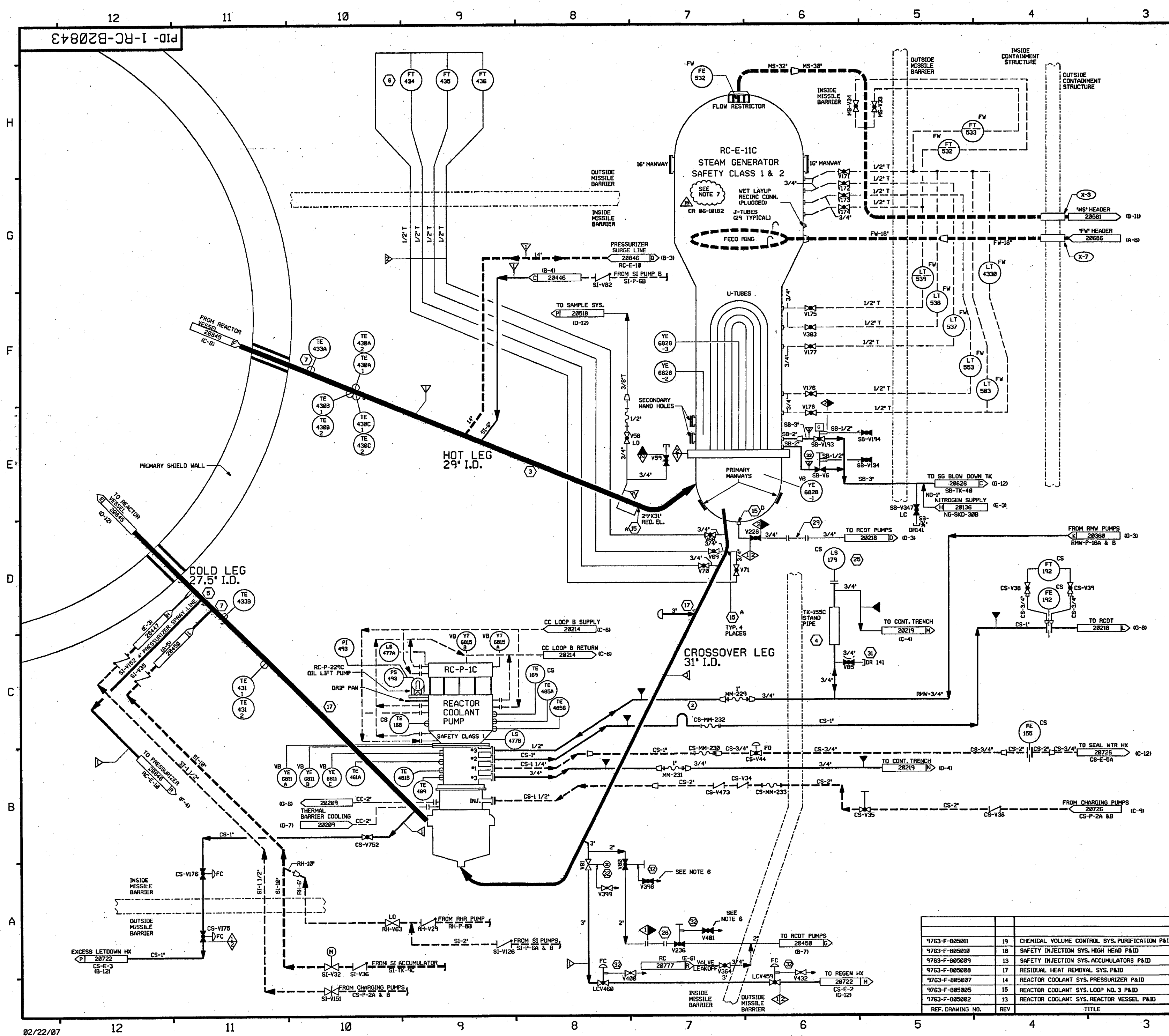
Seabrook Station

REACTOR COOLANT SYSTEM  
LOOP NO. 2

PID- 1-RC-B20842

REF. DRAWING NO.	REV	TITLE
9763-F-005011	19	CHEMICAL VOLUME CONTROL SYS. PURIFICATION
9763-F-005010	18	SAFETY INJECTION SYS. HIGH HEAD
9763-F-005009	13	SAFETY INJECTION SYS. ACCUMULATORS
9763-F-005008	17	RESIDUAL HEAT REMOVAL SYS.
9763-F-005007	14	REACTOR COOLANT SYS. PRESSURIZER
9763-F-005004	16	REACTOR COOLANT SYS. LOOP NO. 2
9763-F-005002	13	REACTOR COOLANT SYS. REACTOR VESSEL



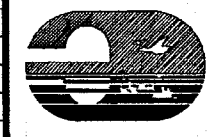


FOR P&ID REFERENCE DRAWINGS, SYMBOLS AND ABBREVIATIONS  
REFER TO DRAWINGS P&ID - LEGEND 1 AND P&ID - LEGEND 2

- NOTES:
1. INDICATES GENERAL NOTE NUMBER - REFER TO DRAWING 28848 FOR GENERAL NOTES.
  2. WORK THIS DRAWING WITH DRAWINGS 28840, 28841, 28842, AND 28844 THROUGH 28846 AND 28848.
  3. ALL LINES, EQUIPMENT, COMPONENTS, AND INSTRUMENTATION HAVE SYSTEM PREFIX RC UNLESS OTHERWISE NOTED.
  4. VENTS, DRAINS & TEST CONN. CODE BREAKS ARE AT THE DOWNSTREAM END OF THE OUTER ISOLATION VALVE PER 1-NHY-885111 UNLESS NOTED OTHERWISE.
  5. INDICATES REVISION LEVEL.
  6. VALVE STEM LEAK-OFF ISOLATION VALVES V392, V394, V395, V396, V398, V401 & V402 ARE TO BE MAINTAINED CLOSED. VALVE STEM LEAK-OFF TO BE CONSIDERED INOPERABLE.
  7. THE STEAM GENERATOR SHELL SIDE IS ANS SAFETY CLASS 2 AND WAS MANUFACTURED AS ASME CODE CLASS 1.
- CR 86-18182

PORTIONS OF THIS DRAWING ARE  
**NUCLEAR SAFETY RELATED**

15	2-23-97	BCS	JM	PEB	INCORP. CR 86-18182 REV.9
14	7/3/96	MPW	DWS	DJM	INCORP. DCR 91-46 DCN 88
13	7/22/94	BCL	DWS	JMCC	INCORP. DCR 94-14 CA#8
12	11-3-92	DWS	BCL	ES	INCORP. DCR 98-3 CA#8 & 98-48 CA#8
11	4-21-92	MRB	BCL	JEV	INCORP. MMOD 91-515 CA8
10	9/24/91	MRB	GPM	WFD	INCORP. MMOD 91-582 CA26
9	10/18/90	MRB	JM	RSG	RE-INCORP. ECA 85/1033668
REV	DATE	DSGN	CHKD	CE	DESCRIPTION

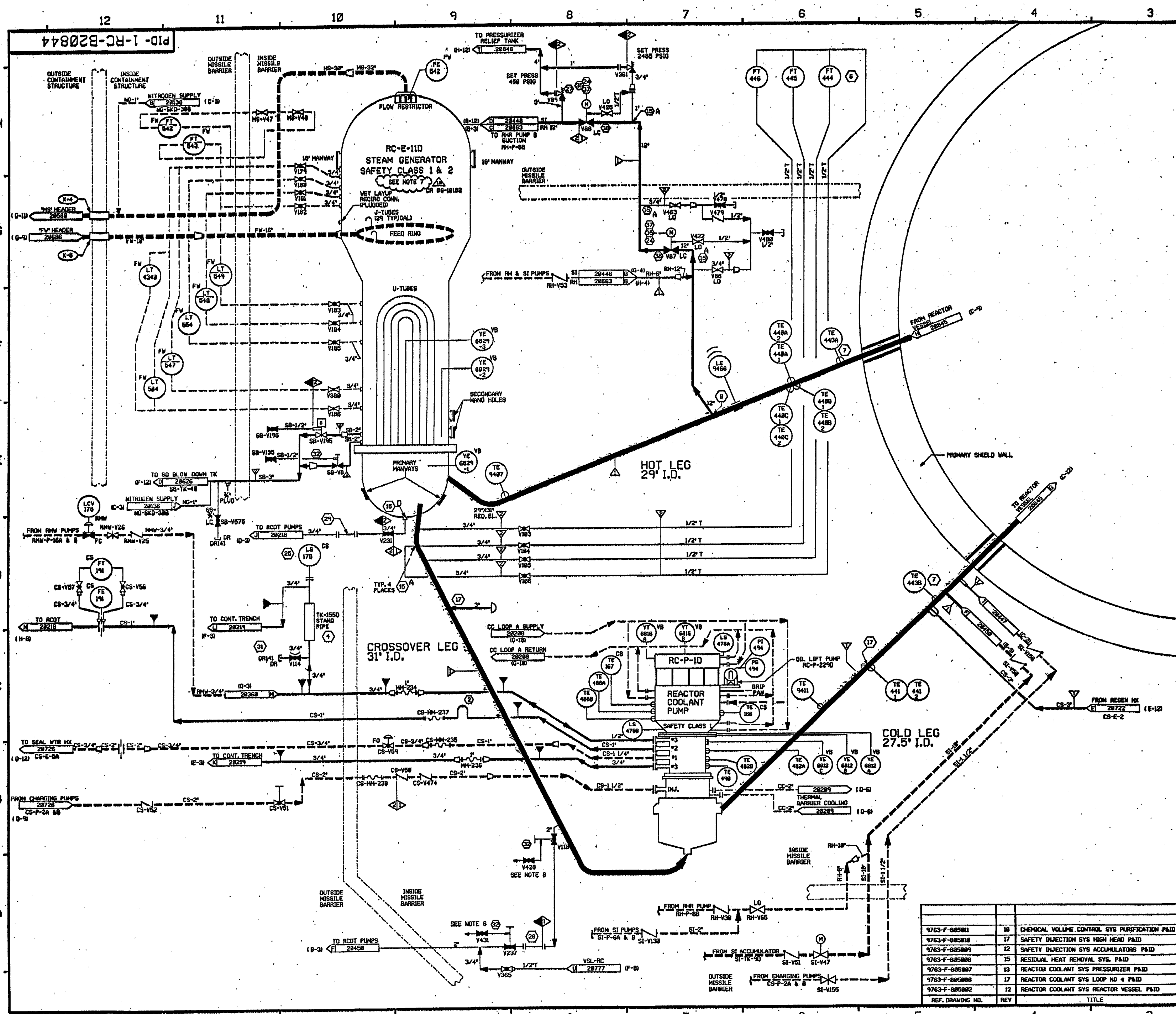
**FPL ENERGY**

Seabrook Station

REACTOR COOLANT SYSTEM  
LOOP NO. 3

PID- 1-RC-B20843

REF. DRAWING NO.	REV	TITLE
9763-F-805811	19	CHEMICAL VOLUME CONTROL SYS. PURIFICATION P&ID
9763-F-805810	18	SAFETY INJECTION SYS. HIGH HEAD P&ID
9763-F-805809	13	SAFETY INJECTION SYS. ACCUMULATORS P&ID
9763-F-805808	17	RESIDUAL HEAT REMOVAL SYS. P&ID
9763-F-805807	14	REACTOR COOLANT SYS. PRESSURIZER P&ID
9763-F-805805	15	REACTOR COOLANT SYS. LOOP NO. 3 P&ID
9763-F-805802	13	REACTOR COOLANT SYS. REACTOR VESSEL P&ID




FOR PAID REFERENCE DRAWINGS, SYMBOLS AND ABBREVIATIONS  
REFER TO DRAWING PAID - LEGEND 1 AND PAID - LEGEND 2

- NOTES
1. ○ INDICATES GENERAL NOTE NUMBER - REFER TO DRAWING 20840 FOR GENERAL NOTES.
  2. WORK THIS DRAWING WITH DRAWINGS 20840 THROUGH 20843 AND 20845 THROUGH 20848 & 20849.
  3. ALL LINES, EQUIPMENT, COMPONENTS AND INSTRUMENTATION HAVE SYSTEM PREFIX RC UNLESS OTHERWISE NOTED.
  4. VENT, DRAIN AND TEST CONNECTIONS ARE AT THE DOWNSTREAM END OF THE ISOLATION VALVE PER 1-WHY-88533 UNLESS NOTED OTHERWISE.
  5. △ - INDICATES REVISION LEVEL.
  6. VALVE STEM LEAK-OFF ISOLATION VALVES V420 & V421 ARE TO BE MAINTAINED CLOSED. VALVE STEM LEAK-OFF TO BE CONSIDERED IMPROPER.
  7. THE STEAM GENERATOR SHELL SIDE IS AWS CLASS 2 AND WAS MANUFACTURED AS AWS CODE CLASS 1.  
CR 86-1802

PORTIONS OF THIS DRAWING ARE  
**NUCLEAR SAFETY RELATED**

REV	DATE	DSGN	CHKD	CE	DESCRIPTION
18	3-21-77	BCS	JTM	SES	INCCRP CR 86-1802 REV. 8
17	1/2/76	MPW	DWS	DJM	INCCRP DCR 75-46 DCM 88
16	8/28/75	MPW	BCS	VMS	INCCRP MWD 76-558 DCM 81
15	11/22/76	MPW	BCS	DMO	INCCRP DCR 75-23 CA# 8, 3 & 11
14	7/22/74	BCL	DWS	JDOC	INCCRP DCR 74-8814 CA# 8
13	11/3/72	DMS	BCL	ES	INCCRP DCR 73-8803 CA# 8
12	4-28-72	MWB	DWS	RFB	INCCRP MWD 74-515 CA# 8
11	9/21/70	MWB	GPM	WFO	INCCRP MWD 74-582 CA# 8
10	9/5/71	GPM	FCB	IV	INCCRP DCR 86-231 CA# 8
REV	DATE	DSGN	CHKD	CE	DESCRIPTION



**FPL ENERGY**

Seabrook Station

REACTOR COOLANT SYSTEM  
LOOP NO. 4

PID- 1-RC-B20844

REF. DRAWING NO.	REV	TITLE
9763-F-885811	16	CHEMICAL VOLUME CONTROL SYS PURIFICATION PAID
9763-F-885818	17	SAFETY INJECTION SYS HIGH HEAD PAID
9763-F-885809	12	SAFETY INJECTION SYS ACCUMULATORS PAID
9763-F-885808	15	RESIDUAL HEAT REMOVAL SYS. PAID
9763-F-885807	13	REACTOR COOLANT SYS PRESSURIZER PAID
9763-F-885806	17	REACTOR COOLANT SYS LOOP NO 4 PAID
9763-F-885802	12	REACTOR COOLANT SYS REACTOR VESSEL PAID
REF. DRAWING NO.	REV	TITLE

1.  INDICATES GENERAL NOTE NUMBER. REFER TO DRAWING 220448 FOR GENERAL NOTES.
2. WORK THIS DRAWING WITH DRAWINGS 220448 THRU 220445 & 220446.
3. ALL LINES, EQUIPMENT, COMPONENTS AND INSTRUMENTS HAVE SYSTEM PREFIX, I.C. UNLESS NOTED OTHERWISE.
4. VENT, DRAIN & TEST COCK/COCK BREAKS ARE AT THE DOWNSTREAM END OF THE OUTER ISOLATION VALVE PER 1-VN-080311 UNLESS NOTED OTHERWISE.
5.  INDICATES REVISION LEVEL.
6. VALVE STEAM LEAK-OFF ISOLATION VALVES 1-V333 & 1-V334 ARE TO BE CLOSED AND CLOSED. 1-V333 STEAM LEAK-OFF IS TO BE CONSIDERED REMAINABLE.
7. TYPON LUBING REINFORCED FIBRE PULTRUDEX URETHANE URETHANE TUBING TO BE INSTALLED WHEN REQUIRED DURING SHUTDOWN MODE FOR VENTING I.C. SYSTEM.
8. DURING PRE-OUTAGE PRESSURIZED PURGING, A TEMPORARY SPOOL PIECE, TAG 1-VG-104-088, CLV-55 BRAIDED HOSE WITH A NOTEMETER TO BE INSTALLED. TYPON TUBING WILL BE REMOVED FOLLOWING COMPLETION OF PURGING ACTIVITIES OCG 97-10.

PORTIONS OF THIS DRAWING ARE  
**NUCLEAR SAFETY RELATED**

14	07/12/82	BCH	JM	PC	INCOMP. MHOD 83-584 DCH- 88, CORRECT CONTINUATION
13	01/12/82	MPV	JM	RRB	INCOMP. DCR 82-882 DCH 88
12	12/18/82	DNS	DNS	ETM	INCOMP. DCR 97-16 DCH 88, 84
11	6/13/87	DVS	MPV	DND	INCOMP. DCR 978888 CM-88
10	5/28/87	MPV	DVS	RRB	INCOMP. DCR 96-86 CAM
9	5/11/87	DVS	DVS	WZF	PARTIAL INCOMP. DCR 97-16 CAM
8	12/24/84	RRB	FCB	BCL	INCOMP. MHOD 96-511 CAM
7	9/24/84	RRB	JM	MLO	INCOMP. DCR 97-582 CAM
6	8/25/84	RRB	FCB	JY	INCOMP. ECA 85/885888
5	12/28/81	RRB	CDH	MAC	INCORPORATED DNR 88-136 CA 8 MHOD 97-599 CAM
4	12/13/88	RRB	GPM	KJY	INCORPORATED DNR 88-28 REV 8
					REVISED NOTE 1,2 AND 4, EQUIP. CL PER ILEAC PAID.
					ADDED DETAIL LISTED DESIGNATION FOR FLOW RESTRICTOR, CONT. CORDS, POLD REF NOTE DELETED DUPLICATED INFO OF ASSOC. 37334 1/2X, 10325.
3	12/18/87	GPM	DNS	PAG	REMOVED PIPE SPEC BREAKS INCOMP. ECA 97/11853888
2	11/6/86	JDM	PAL	RRB	INCOMP. ECA 97/11853888 REMOVED FOR N.E. 12224444 POSITIVE PCD-4556A PCD-4559-CT-73304 PCD-4559-PT- 73356 LOCALITY NOTED NON-APPLICABLE REF. INDICATED NOTE 5 AND DATA FROM REF. INCORPORATED INCOMP. ECA 87/111334 5/8/88-2441A
1	9/26/86	PAL	BCL	RRB	
0	6/27/88	TAK	DNS	WFD	ISSUED FOR OPERATIONS
REV	DATE	DSGN	CHKO	CE	DESCRIPTION

## Seabrook Station



REACTOR COOLANT SYSTEM  
PRESSURIZER

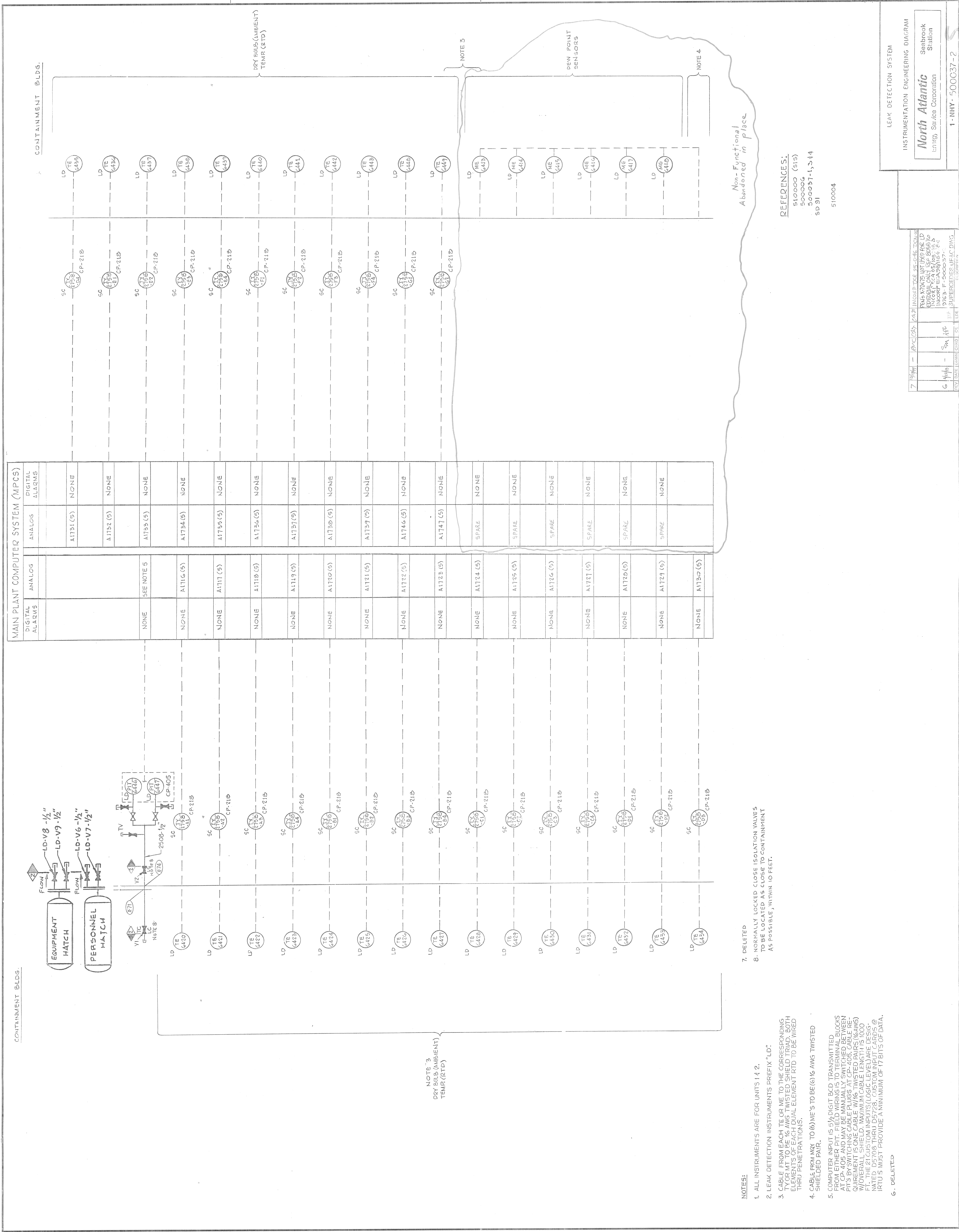
PID- 1-RC-B20846

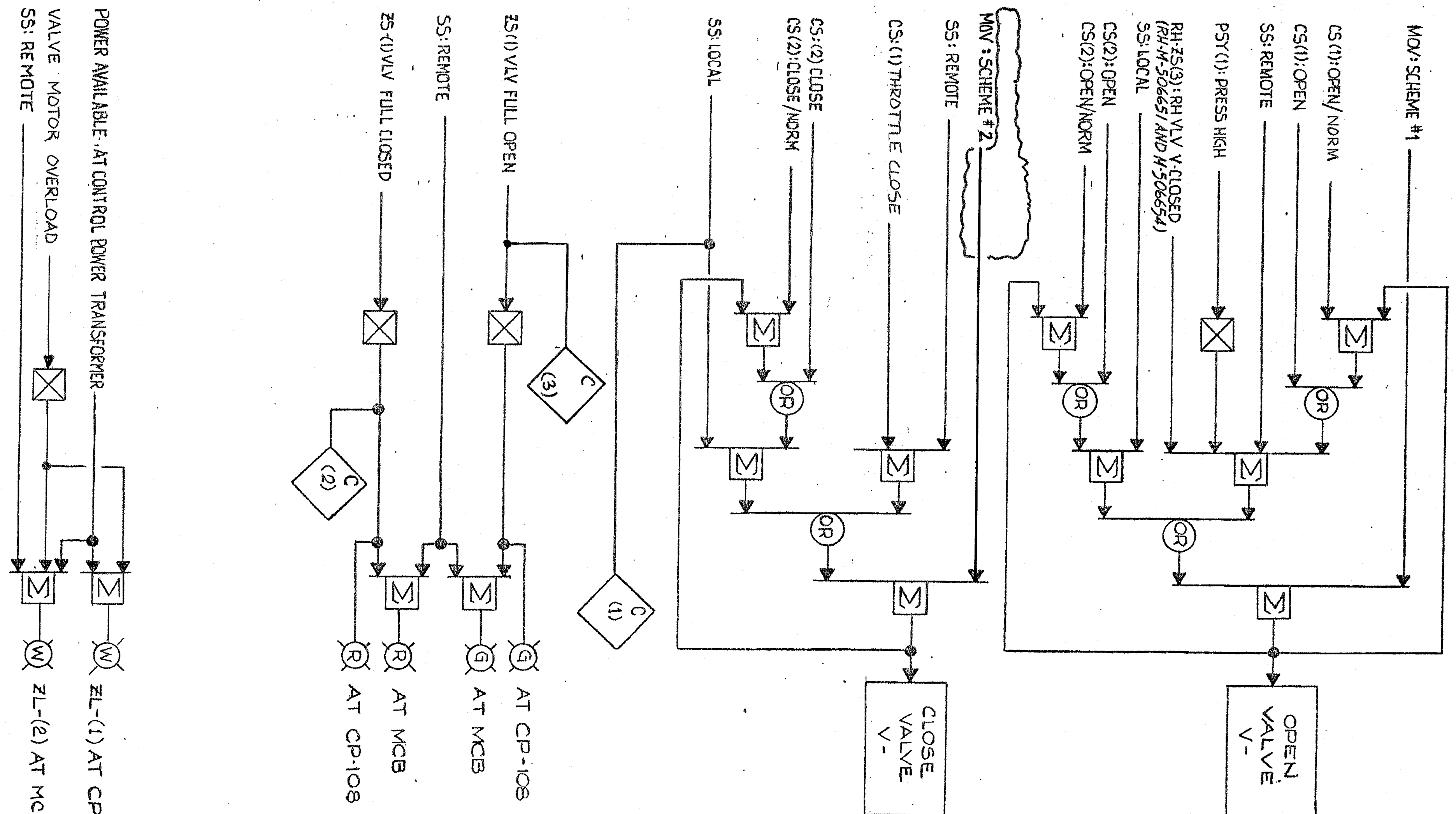
9763-F-005007	14	RCS PRESSURIZER P & ID
9763-F-005002	13	RCS REACTOR VESSEL P & ID
REF. DRAWING NO.	REV	TITLE











SEE DWG. M-503748 FOR  
TABULATION & NOTES

THIS DWG SUPERSEDES  
9763-M-500010 SHT 82 REV-P1

ISSUED-FOR-CONSTRUCTION

15	8/21/99	MRJ	JWB	RPN	RWM	INCORP DCR 97-21 DCN-15
14	8/23/98	JWB	MRB	JWR	CM	PART OF DCR 97-21 DCN-13
13	6/12/97	MRB	JWB	JPS	RWM	PARTIAL INCORP. DCR 97-21, DCN-0
12	6-5-97	MRB	JWB	JPS	JPS	INCORP. DCR 97-021, DCN-0
11	8/29/91	MRB	GPM	APL	RPN	INCORP: DCR 89-24, CA- DCR 86-239, CA-1
10	3/26/87	BCE	KK	TPN	RPN	ECA 05/118 202 B 9763-M-503747 AND SUPERCEDES UE&C DWG. 5
REV	DATE	DRWN	CHKD	CE	LDE	DESCRIPTION

NUCLEAR SAFETY RELATED

RC-ISOLATION VALVES  
LOGIC DIAGRAM

New Hampshire  
**Yankee**

Seabrook  
Station

1-NHY- 503747 REV 15



CONTINUED FROM DWG M-503747

THIS DWG SUPERSEDES  
9763-M-500010 SH 83 REV P1

NUCLEAR SAFETY RELATED

RC-ISOLATION VALVES  
LOGIC DIAGRAM

New Hampshire  
Yankee

Seabrook  
Station

1-NHY- 503748 REV 10

TRAIN	VALVE No.	CS (1)	ZL (2)	SS (1)	PST (1)	RH-ZS (3)	ZS (1)	FP 30001 SHT-	COMPUTER ID/IRTL
		CS (2)	ZL (2)	SS (1)	PST (2)	RH-V			(1) (2) (3)
B	V22	7302-1	7302-1	403A	2465-B	7302B	370		D7442 D4446 D7467
		7302-2	7302-2	7302	V35				4 6 5
A	V23	7303-1	7303-1	405A	2465-A		369		D7440 D4447 D7469
		7303-2	7303-2	7303	V35				3 5 7
A	V88	7311-1	7311-1	405A	2466-A	7311A	371		D7441 D4449 D7464
		7311-2	7311-2	7311	V36				3 5 6
B	V87	7310-1	7310-1	403A	2466-B		372		D7443 D4448 D7466
		7310-2	7310-2	7310	V36				4 6 6

NOTES

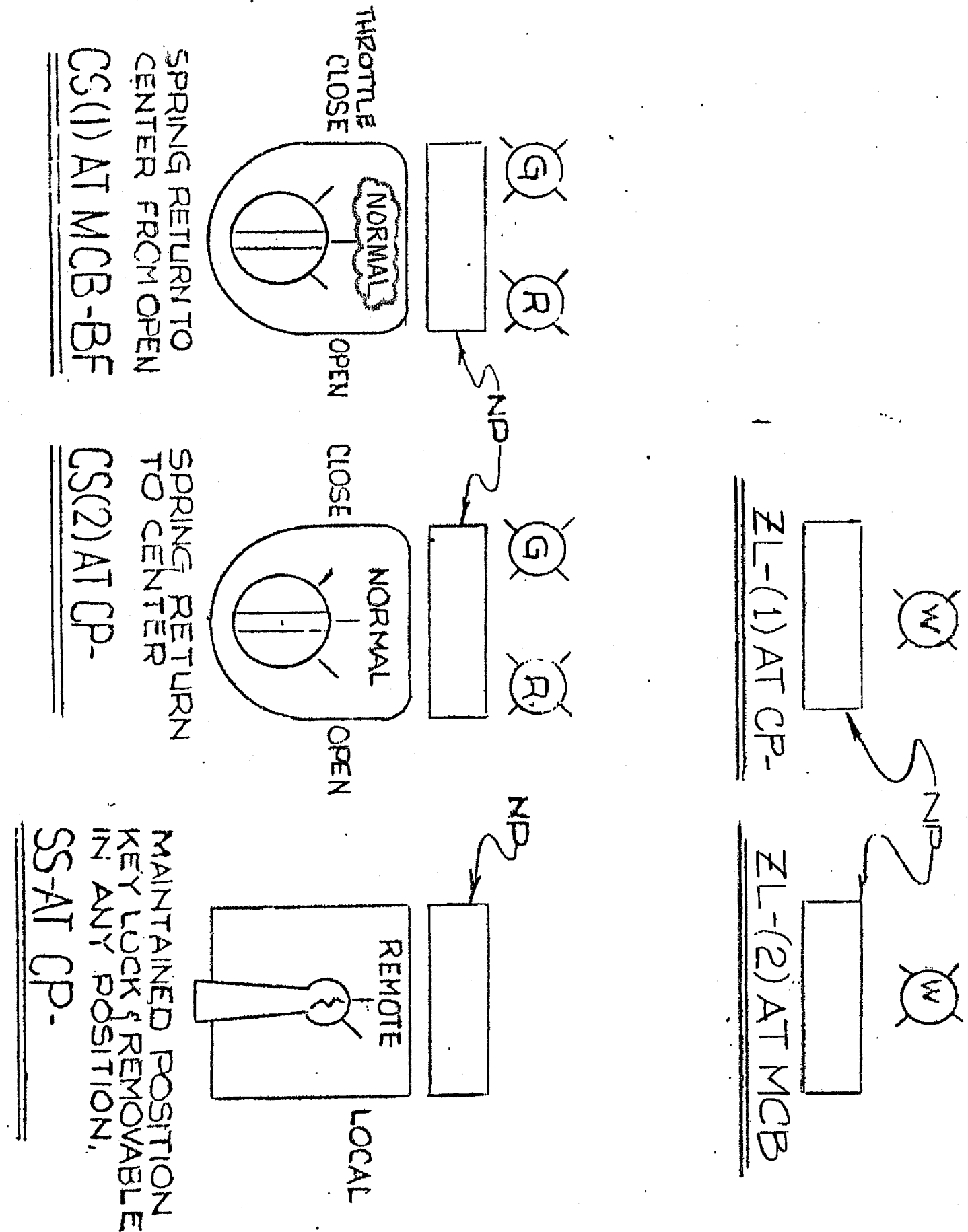
- FOR DESCRIPTION OF LOGIC SYMBOLS  
SEE M-503100.
- ZS-(1) LIMIT SWITCH ARE MOUNTED  
INSIDE MOTOR.

REFERENCE DOCUMENTS

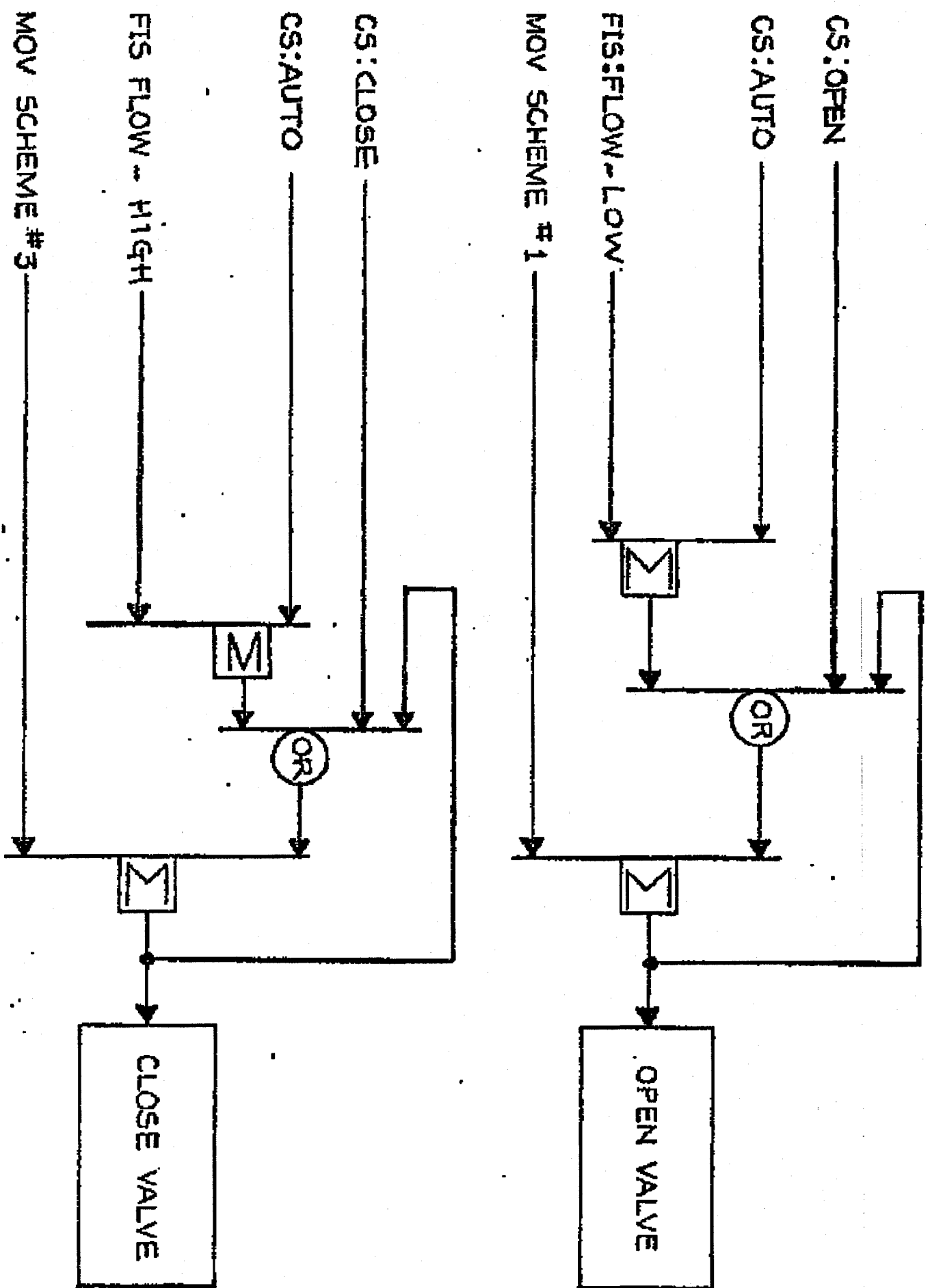
FP N° (SEE TABLE)  
SD-NAH/NCH-281  
M-506635  
M-506636  
M-503747  
RH-M-506651  
RH-M-506654  
C-509036

(PART OF THIS DWG. WAS PART  
OF M-503747)

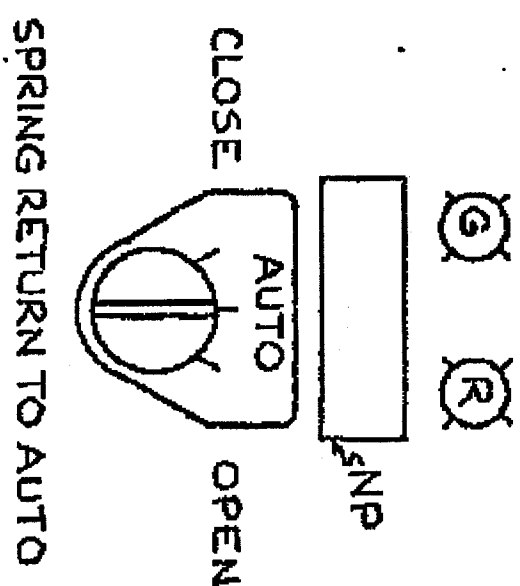
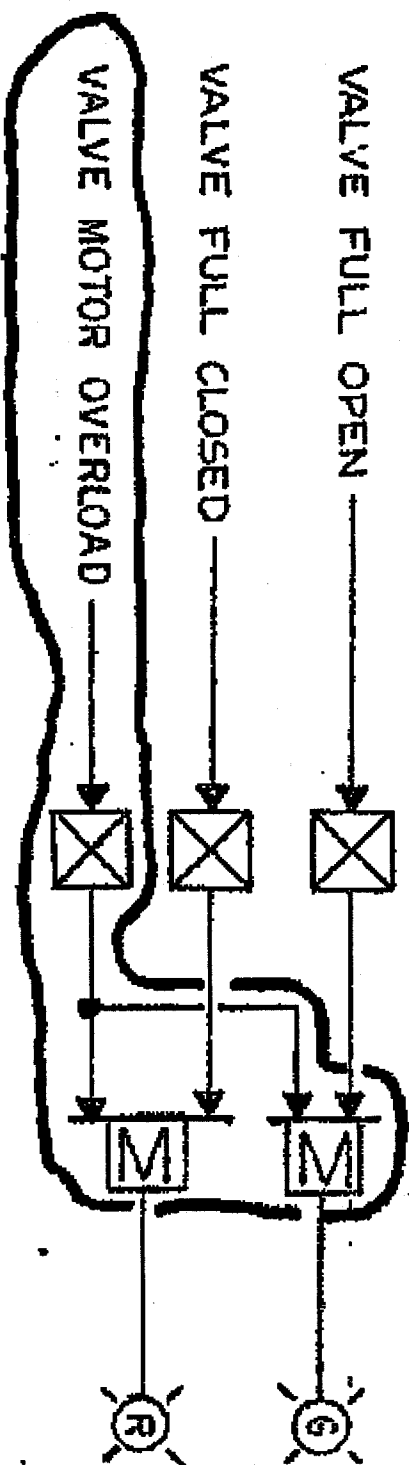
ISSUED-FOR-CONSTRUCTION



1-NHY- 503748 REV 10



TRAIN	RH PUMP RECIRC. VLV FCV-	CS-	FIS-	LOGIC REF FP-30001 SH.
A	610	610	610	212
B	611	611	611	213



CS AT MCB

ISSUED-FOR-CONSTRUCTION

NUCLEAR SAFETY RELATED

RH PUMPS LOW FLOW RECIRC VLVS  
LOGIC DIAGRAM

New Hampshire  
Yankee

Seabrook  
Station

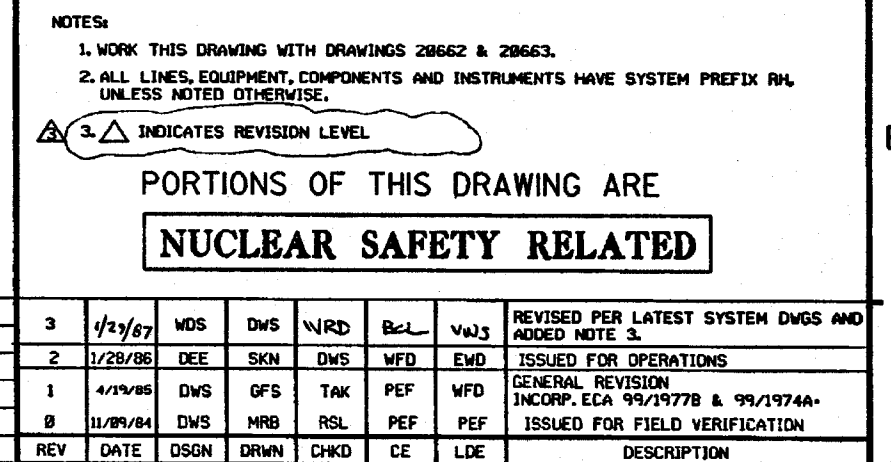
1-NHY- 503764

6	2-28-85	SB-16055	RPN	EM	HK	LRV	RPN	-	-
5	11-15-80	DCN 03-0884A		JAW	M	JFO	RPN	-	-
4	2-14-80	REV'D REFERENCE		IO	W	JFB	IR	-	-
3	5-3-78	REV'D NOTE 1		ME	CE	JIC	AL	-	-
9	4/2/81	HP	APL	CEM	JFB	DCR 86-403, CA-4, TRN 'B'			
8	3/2/81	HP	APL	CEM	BER	DCR 86-403, CA-0, TRN 'A'			
7	3/2/81	RCE	HK	TPN	N/A	9763-M-503764 SUPERCEDES UE&C DWG3			
REV	DATE	DRWN	CHKD	CE	LDE	DESCRIPTION			

NOTES  
1-FOR DESCRIPTION OF LOGIC  
SYMBOLS SEE M-503100

REFERENCE DOCUMENTS  
9763-M-506650  
9763-F-805008  
9763-M-506653  
SD-NAH/NCH-283





PORTIONS OF THIS DRAWING ARE

<b>NUCLEAR SAFETY RELATED</b>
-------------------------------

3	4/23/67	WDS	DWS	WRD	BCL	WJ3	REVISED PER LATEST SYSTEM DWGS AND ADD NOTE 3.
2	1/28/66	DEE	SKN	DWS	WFD	EWD	ISSUED FOR OPERATIONS
1	4/19/65	DWS	QFS	TAK	PEF	WFD	GENERAL REVISION INCORP. ECA 99/1977B & 99/1974A.
0	11/06/64	DWS	MRB	RSL	PEF	PEF	ISSUED FOR FIELD VERIFICATION
REV	DATE	DSGN	DRWN	CHKD	CE	LDE	DESCRIPTION

PSN

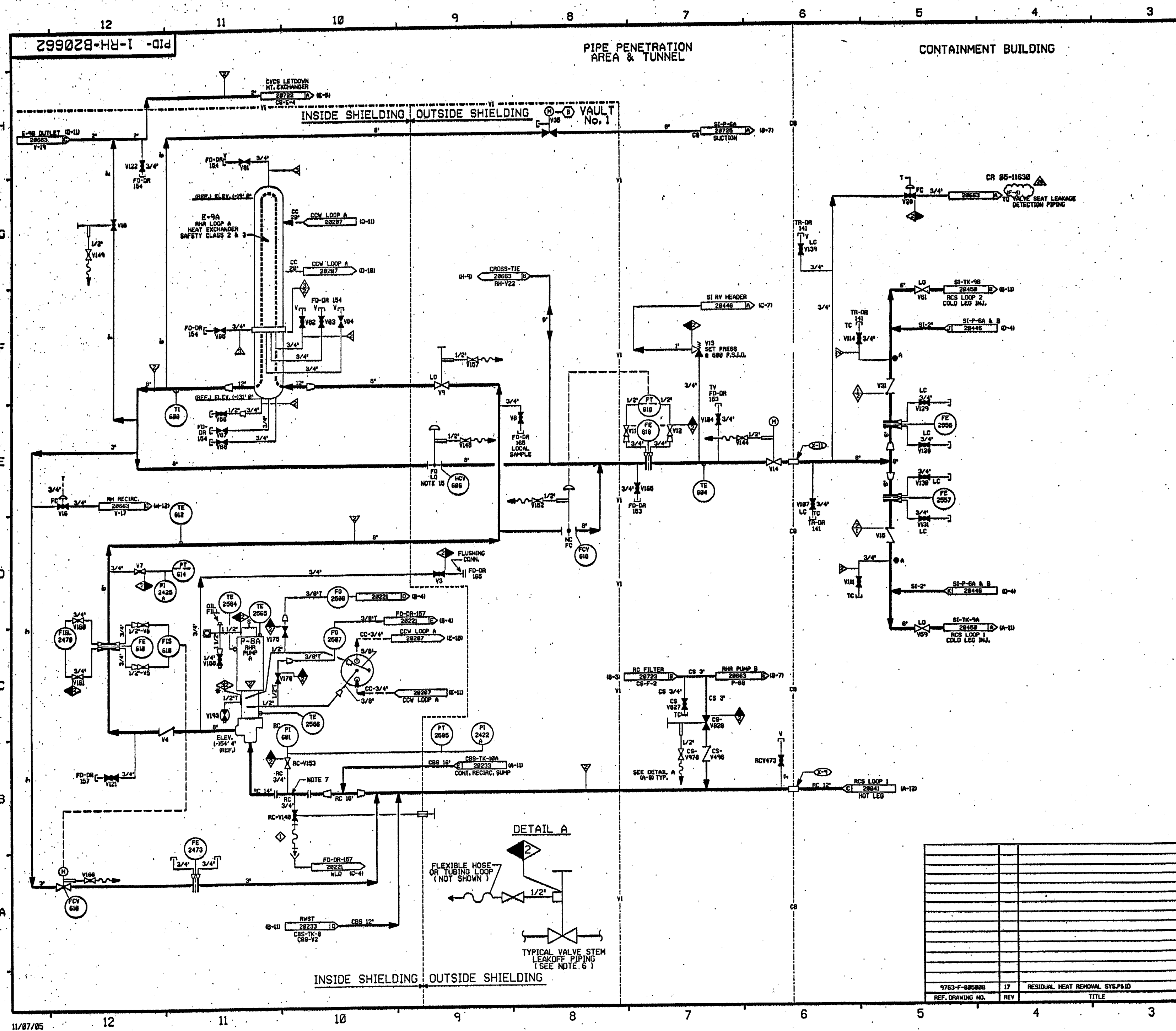
PUBLIC SERVICE OF NEW HAMPSHIRE



## RESIDUAL HEAT REMOVAL SYS. OVERVIEW

SEABROOK STATION

PID- 1-RH-B20660



FOR P&ID REFERENCE DRAWING SYMBOLS AND ABBREVIATIONS  
REFER TO DRAWINGS PAID - LEGEND 1 AND PAID - LEGEND 2  
FURTHER ENGINEERING EVALUATION TO  
EFFECT FOR 11/87/85

- NOTES:
1. WORK THIS DRAWING WITH DRAWINGS 28658 & 28663. PORTIONS OF THIS DRAWING ARE DELETED ON DRAWINGS 28658 & 28663 OR 10 DML.
  2. ALL LINES, VALVES, EQUIPMENT, COMPONENTS AND INSTRUMENTS HAVE SYSTEM PREFIX IN UNLESS NOTED OTHERWISE.
  3. DELETED.
  4. @ INDICATES 3/4" FLOW RESTRICTOR INSTALLED. SEE APPLICABLE DETAIL ON DRAWING 1-RC-28046.
  5. DELETED.
  6. REFER TO DRAWING YSL-28774 FOR VALVE LEAKOFFS.
  7. PERMANENT SPOOL PIECE INSTALLATION SHOWN TEMP. STRAINER IS USED IN PLACE OF SPOOL PIECE DURING INITIAL FLUSHING OPERATION. STRAINER TO BE REMOVED BEFORE START-UP.
  8. INSTRUMENTATION:
    - ⑧ INTERLOCKED WITH SI-V10, SI-V18, SI-V19, DOW 28446, CS-V10, DOW 28233, RC-V22, & RC-V23, DOW 28040
  9. VENTS, DRAINS, TEST COILS & ORIFICE TAP PIPING CODE BREAKS ARE AT THE DOWNSTREAM END OF THE OUTER ISOLATION VALVE PER 1-RC-28046, UNLESS NOTED OTHERWISE.
  10. DELETED.
  11. DELETED.
  12. Δ - INDICATES REVISION LEVEL.
  13. DELETED.
  14. DELETED.
  15. HANDJACK WINDWHEEL LOCKED OPEN EXCEPT DURING WINDUP.

PORTIONS OF THIS DRAWING ARE  
**NUCLEAR SAFETY RELATED**

REV	DATE	DSGN	CHKD	SES	DESCRIPTION
28	11/7/85	BCS	JPL	WLB	INCORP. CR 85-11638
19	11/7/85	BCS	MPW	RWB	INCORP. DCR 958822 DCH-88
18	9/15/85	BCS	MRS	RWB	INCORP. DCH 99-8836 DCH-88
17	2/25/85	BCS	DWS	MAP	INCORP. HMOO 38851 DCH-88
16	11/2/79	DWS	MPW	VWS	INCORP. HMOO 38852 DCH-88
15	4/18/75	BCL	DWS	JMC	INCORP. DCR 89-54 CA-8
14	5/27/74	BCL	DWS	DND	INCORP. HMOO 91-555 CA-8
13	3/25/82	BCL	MRS	GRH	INCORP. HMOO 92-552 CA-8
12	3/3/82	MRS	DWS	DNP	INCORP. HMOO 92-556 CA-8
11	4/10/80	MRS	DWS	RWB	INCORP. HMOO 92-555 CA-8
10	1/18/78	GPH	PAL	IRC	INCORP. DCR 87-136 CALL 89-13 CA-8 AND DRAWING ENHANCEMENT
9	9/6/79	MRS	APL	MFD	INCORP. DCR 87-132 CA-8, DCR 89-13 CA-8 & DCR 88-32 CA-8
8	2/2/89	GPH	MRS	GRH	INCORPORATED DCR 87-274 CA-8 REVISED VALVE V148 & OPERATOR SYMBOL. SEE LEGEND 2
7	10/30/87	GPH	DWS	PAG	INCORP. DCR 86-551 & DCR 87-341 REV. PIPING TO REFLECT AS INSTALLED COR-2 TO CLARIFY REQUIREMENT FOR DUPLICATION. DETAIL NOTE FOR VALVE V148. NEW FLOW RESTRICTOR INDICATOR SYM. ADDED. 1/4" FLOW RESTRICTOR INDICATOR PIPING. CONT. DWS & MRS-1 CL. BOUNDARY

**FPL ENERGY** Seabrook Station

**RESIDUAL HEAT REMOVAL SYS. TRAIN A DETAIL**

PID- 1-RH-B20662

9763-F-885888	17	RESIDUAL HEAT REMOVAL SYS-PAID
REF. DRAWING NO.	REV	TITLE



- NOTE: THIS DRAWING DRAWING WITH DRAWINGS 28658 & 28662. PORTIONS OF THIS DRAWING ARE DUPLICATED ON DRAWING SI-28446, SI-28448 & SI-28449 DUE TO DUAL SYSTEM FUNCTIONS.
- 2. ALL LINES, VALVES, EQUIPMENT, COPIES AND INSTRUMENTS HAVE SYSTEM PREFIX UNLESS NOTED OTHERWISE.
- 3.  $\Delta$  INDICATES 3/8" FLOW RESTRICTOR INSTALLED. SEE APPLICABLE DETAIL. C DRAWING RC-28948.
- 4. DELETED
- 5. REFER TO DRAWING VSL-28774 FOR VALVE LEAKOFFS.
- 6. PERMANENT SPOOL PIECE INSTALLATION SHOWN TEMP. STRAINER IS USED IN PLACE OF SPOOL PIECE DURING INITIAL FLUSHING OPERATION. STRAINER TO BE REMOVED BEFORE PLANT START-UP.
- 7. INSTRUMENTATION
  - ⑤ INTERLOCKED WITH SI-VSL-31, SI-VSL-32, SI-VSL-33, SI-VSL-34, SI-VSL-35, SI-VSL-36, SI-VSL-37, SI-VSL-38, SI-VSL-39, SI-VSL-40, SI-VSL-41, SI-VSL-42, SI-VSL-43, SI-VSL-44, SI-VSL-45, SI-VSL-46, SI-VSL-47, SI-VSL-48, SI-VSL-49, SI-VSL-50, SI-VSL-51, SI-VSL-52, SI-VSL-53, SI-VSL-54, SI-VSL-55, SI-VSL-56, SI-VSL-57, SI-VSL-58, SI-VSL-59, SI-VSL-60, SI-VSL-61, SI-VSL-62, SI-VSL-63, SI-VSL-64, SI-VSL-65, SI-VSL-66, SI-VSL-67, SI-VSL-68, SI-VSL-69, SI-VSL-70, SI-VSL-71, SI-VSL-72, SI-VSL-73, SI-VSL-74, SI-VSL-75, SI-VSL-76, SI-VSL-77, SI-VSL-78, SI-VSL-79, SI-VSL-80, SI-VSL-81, SI-VSL-82, SI-VSL-83, SI-VSL-84, SI-VSL-85, SI-VSL-86, SI-VSL-87, SI-VSL-88, SI-VSL-89, SI-VSL-90, SI-VSL-91, SI-VSL-92, SI-VSL-93, SI-VSL-94, SI-VSL-95, SI-VSL-96, SI-VSL-97, SI-VSL-98, SI-VSL-99, SI-VSL-100, SI-VSL-101, SI-VSL-102, SI-VSL-103, SI-VSL-104, SI-VSL-105, SI-VSL-106, SI-VSL-107, SI-VSL-108, SI-VSL-109, SI-VSL-110, SI-VSL-111, SI-VSL-112, SI-VSL-113, SI-VSL-114, SI-VSL-115, SI-VSL-116, SI-VSL-117, SI-VSL-118, SI-VSL-119, SI-VSL-120, SI-VSL-121, SI-VSL-122, SI-VSL-123, SI-VSL-124, SI-VSL-125, SI-VSL-126, SI-VSL-127, SI-VSL-128, SI-VSL-129, SI-VSL-130, SI-VSL-131, SI-VSL-132, SI-VSL-133, SI-VSL-134, SI-VSL-135, SI-VSL-136, SI-VSL-137, SI-VSL-138, SI-VSL-139, SI-VSL-140, SI-VSL-141, SI-VSL-142, SI-VSL-143, SI-VSL-144, SI-VSL-145, SI-VSL-146, SI-VSL-147, SI-VSL-148, SI-VSL-149, SI-VSL-150, SI-VSL-151, SI-VSL-152, SI-VSL-153, SI-VSL-154, SI-VSL-155, SI-VSL-156, SI-VSL-157, SI-VSL-158, SI-VSL-159, SI-VSL-160, SI-VSL-161, SI-VSL-162, SI-VSL-163, SI-VSL-164, SI-VSL-165, SI-VSL-166, SI-VSL-167, SI-VSL-168, SI-VSL-169, SI-VSL-170, SI-VSL-171, SI-VSL-172, SI-VSL-173, SI-VSL-174, SI-VSL-175, SI-VSL-176, SI-VSL-177, SI-VSL-178, SI-VSL-179, SI-VSL-180, SI-VSL-181, SI-VSL-182, SI-VSL-183, SI-VSL-184, SI-VSL-185, SI-VSL-186, SI-VSL-187, SI-VSL-188, SI-VSL-189, SI-VSL-190, SI-VSL-191, SI-VSL-192, SI-VSL-193, SI-VSL-194, SI-VSL-195, SI-VSL-196, SI-VSL-197, SI-VSL-198, SI-VSL-199, SI-VSL-200, SI-VSL-201, SI-VSL-202, SI-VSL-203, SI-VSL-204, SI-VSL-205, SI-VSL-206, SI-VSL-207, SI-VSL-208, SI-VSL-209, SI-VSL-210, SI-VSL-211, SI-VSL-212, SI-VSL-213, SI-VSL-214, SI-VSL-215, SI-VSL-216, SI-VSL-217, SI-VSL-218, SI-VSL-219, SI-VSL-220, SI-VSL-221, SI-VSL-222, SI-VSL-223, SI-VSL-224, SI-VSL-225, SI-VSL-226, SI-VSL-227, SI-VSL-228, SI-VSL-229, SI-VSL-230, SI-VSL-231, SI-VSL-232, SI-VSL-233, SI-VSL-234, SI-VSL-235, SI-VSL-236, SI-VSL-237, SI-VSL-238, SI-VSL-239, SI-VSL-240, SI-VSL-241, SI-VSL-242, SI-VSL-243, SI-VSL-244, SI-VSL-245, SI-VSL-246, SI-VSL-247, SI-VSL-248, SI-VSL-249, SI-VSL-250, SI-VSL-251, SI-VSL-252, SI-VSL-253, SI-VSL-254, SI-VSL-255, SI-VSL-256, SI-VSL-257, SI-VSL-258, SI-VSL-259, SI-VSL-260, SI-VSL-261, SI-VSL-262, SI-VSL-263, SI-VSL-264, SI-VSL-265, SI-VSL-266, SI-VSL-267, SI-VSL-268, SI-VSL-269, SI-VSL-270, SI-VSL-271, SI-VSL-272, SI-VSL-273, SI-VSL-274, SI-VSL-275, SI-VSL-276, SI-VSL-277, SI-VSL-278, SI-VSL-279, SI-VSL-280, SI-VSL-281, SI-VSL-282, SI-VSL-283, SI-VSL-284, SI-VSL-285, SI-VSL-286, SI-VSL-287, SI-VSL-288, SI-VSL-289, SI-VSL-290, SI-VSL-291, SI-VSL-292, SI-VSL-293, SI-VSL-294, SI-VSL-295, SI-VSL-296, SI-VSL-297, SI-VSL-298, SI-VSL-299, SI-VSL-300, SI-VSL-301, SI-VSL-302, SI-VSL-303, SI-VSL-304, SI-VSL-305, SI-VSL-306, SI-VSL-307, SI-VSL-308, SI-VSL-309, SI-VSL-310, SI-VSL-311, SI-VSL-312, SI-VSL-313, SI-VSL-314, SI-VSL-315, SI-VSL-316, SI-VSL-317, SI-VSL-318, SI-VSL-319, SI-VSL-320, SI-VSL-321, SI-VSL-322, SI-VSL-323, SI-VSL-324, SI-VSL-325, SI-VSL-326, SI-VSL-327, SI-VSL-328, SI-VSL-329, SI-VSL-330, SI-VSL-331, SI-VSL-332, SI-VSL-333, SI-VSL-334, SI-VSL-335, SI-VSL-336, SI-VSL-337, SI-VSL-338, SI-VSL-339, SI-VSL-340, SI-VSL-341, SI-VSL-342, SI-VSL-343, SI-VSL-344, SI-VSL-345, SI-VSL-346, SI-VSL-347, SI-VSL-348, SI-VSL-349, SI-VSL-350, SI-VSL-351, SI-VSL-352, SI-VSL-353, SI-VSL-354, SI-VSL-355, SI-VSL-356, SI-VSL-357, SI-VSL-358, SI-VSL-359, SI-VSL-360, SI-VSL-361, SI-VSL-362, SI-VSL-363, SI-VSL-364, SI-VSL-365, SI-VSL-366, SI-VSL-367, SI-VSL-368, SI-VSL-369, SI-VSL-370, SI-VSL-371, SI-VSL-372, SI-VSL-373, SI-VSL-374, SI-VSL-375, SI-VSL-376, SI-VSL-377, SI-VSL-378, SI-VSL-379, SI-VSL-380, SI-VSL-381, SI-VSL-382, SI-VSL-383, SI-VSL-384, SI-VSL-385, SI-VSL-386, SI-VSL-387, SI-VSL-388, SI-VSL-389, SI-VSL-390, SI-VSL-391, SI-VSL-392, SI-VSL-393, SI-VSL-394, SI-VSL-395, SI-VSL-396, SI-VSL-397, SI-VSL-398, SI-VSL-399, SI-VSL-400, SI-VSL-401, SI-VSL-402, SI-VSL-403, SI-VSL-404, SI-VSL-405, SI-VSL-406, SI-VSL-407, SI-VSL-408, SI-VSL-409, SI-VSL-410, SI-VSL-411, SI-VSL-412, SI-VSL-413, SI-VSL-414, SI-VSL-415, SI-VSL-416, SI-VSL-417, SI-VSL-418, SI-VSL-419, SI-VSL-420, SI-VSL-421, SI-VSL-422, SI-VSL-423, SI-VSL-424, SI-VSL-425, SI-VSL-426, SI-VSL-427, SI-VSL-428, SI-VSL-429, SI-VSL-430, SI-VSL-431, SI-VSL-432, SI-VSL-433, SI-VSL-434, SI-VSL-435, SI-VSL-436, SI-VSL-437, SI-VSL-438, SI-VSL-439, SI-VSL-440, SI-VSL-441, SI-VSL-442, SI-VSL-443, SI-VSL-444, SI-VSL-445, SI-VSL-446, SI-VSL-447, SI-VSL-448, SI-VSL-449, SI-VSL-450, SI-VSL-451, SI-VSL-452, SI-VSL-453, SI-VSL-454, SI-VSL-455, SI-VSL-456, SI-VSL-457, SI-VSL-458, SI-VSL-459, SI-VSL-460, SI-VSL-461, SI-VSL-462, SI-VSL-463, SI-VSL-464, SI-VSL-465, SI-VSL-466, SI-VSL-467, SI-VSL-468, SI-VSL-469, SI-VSL-470, SI-VSL-471, SI-VSL-472, SI-VSL-473, SI-VSL-474, SI-VSL-475, SI-VSL-476, SI-VSL-477, SI-VSL-478, SI-VSL-479, SI-VSL-480, SI-VSL-481, SI-VSL-482, SI-VSL-483, SI-VSL-484, SI-VSL-485, SI-VSL-486, SI-VSL-487, SI-VSL-488, SI-VSL-489, SI-VSL-490, SI-VSL-491, SI-VSL-492, SI-VSL-493, SI-VSL-494, SI-VSL-495, SI-VSL-496, SI-VSL-497, SI-VSL-498, SI-VSL-499, SI-VSL-500, SI-VSL-501, SI-VSL-502, SI-VSL-503, SI-VSL-504, SI-VSL-505, SI-VSL-506, SI-VSL-507, SI-VSL-508, SI-VSL-509, SI-VSL-510, SI-VSL-511, SI-VSL-512, SI-VSL-513, SI-VSL-514, SI-VSL-515, SI-VSL-516, SI-V

PORTIONS OF THIS DRAWING ARE  
**NUCLEAR SAFETY RELATED**

17	4-8-05	JM	Bcs	PRB	INCOMP DCR 88-062 DCM 88 & CLOSED DRAIN W/BS
16	8/22/88	BGS	DWS	NRB	INCOMP DCR 87-0636 DCM-88
15	4/7/88	DWS	BGS	NRB	INCOMP 1940 71981 DCM-88
14	9/21/99	DWS	NRW	VWS	REINCOMP DCR 89-0613 CAPBS INCOMP 1400 99-824 DCM-88
13	11/14/97	BGS	NRW	DND	PASTIAL INCOMP 1400 99-853 DCM
12	11/22/95	BCL	NRW	DND	INCOMP DCR 87-23 CA
11	4/18/85	DWS	DWS	JWC	INCOMP DCR 84-44 CA
10	3/28/84	BCL	NRB	GPH	INCOMP 1400 12-652 CA
9	16/6/92	NRB	DWS	NRB	INCOMP 1400 12-656 CA
8	4/17/92	NRB	DWS	NRB	INCOMP 1400 96-512 CA
7	11/11/89	NRB	PAL	GRN	INCOMP DCR 87-122 CA 13 89-13 CA 82, 88-32 CA 87-136 DCM 88 & 86-712 DRAIN W/BS
6	18/38/87	GPH	DWS	PAS	REINCOMP DCM 87-234 REINCOMPED TO REFLECT AS INSTALLED DND & TO CLARIFY REINCOMP SYM DUPLICATION DND DCM'S NOTES 1 3 5 8 DND 1 3 5 8 9 11 12 13 14 15 16 KEY FLOW RESTRICTION INDICATOR SYM 1 16 17 18 19 20 21 22 23 24 25 26 1 27 28 29 30 31 32 33 34 35 36 37 38 1 39 40 41 42 43 44 45 46 47 48 49 50 1 51 52 53 54 55 56 57 58 59 60 1 61 62 63 64 65 66 67 68 69 70 1 71 72 73 74 75 76 77 78 79 80 1 81 82 83 84 85 86 87 88 89 90 1 91 92 93 94 95 96 97 98 99 100 1 101 102 103 104 105 106 107 108 109 110 1 111 112 113 114 115 116 117 118 119 120 1 121 122 123 124 125 126 127 128 129 130 1 131 132 133 134 135 136 137 138 139 140 1 141 142 143 144 145 146 147 148 149 150 1 151 152 153 154 155 156 157 158 159 160 1 161 162 163 164 165 166 167 168 169 170 1 171 172 173 174 175 176 177 178 179 180 1 181 182 183 184 185 186 187 188 189 190 1 191 192 193 194 195 196 197 198 199 200 1 201 202 203 204 205 206 207 208 209 210 1 211 212 213 214 215 216 217 218 219 220 1 221 222 223 224 225 226 227 228 229 230 1 231 232 233 234 235 236 237 238 239 240 1 241 242 243 244 245 246 247 248 249 250 1 251 252 253 254 255 256 257 258 259 260 1 261 262 263 264 265 266 267 268 269 270 1 271 272 273 274 275 276 277 278 279 280 1 281 282 283 284 285 286 287 288 289 290 1 291 292 293 294 295 296 297 298 299 300 1 301 302 303 304 305 306 307 308 309 310 1 311 312 313 314 315 316 317 318 319 320 1 321 322 323 324 325 326 327 328 329 330 1 331 332 333 334 335 336 337 338 339 340 1 341 342 343 344 345 346 347 348 349 350 1 351 352 353 354 355 356 357 358 359 360 1 361 362 363 364 365 366 367 368 369 370 1 371 372 373 374 375 376 377 378 379 380 1 381 382 383 384 385 386 387 388 389 390 1 391 392 393 394 395 396 397 398 399 400 1 401 402 403 404 405 406 407 408 409 410 1 411 412 413 414 415 416 417 418 419 420 1 421 422 423 424 425 426 427 428 429 430 1 431 432 433 434 435 436 437 438 439 440 1 441 442 443 444 445 446 447 448 449 450 1 451 452 453 454 455 456 457 458 459 460 1 461 462 463 464 465 466 467 468 469 470 1 471 472 473 474 475 476 477 478 479 480 1 481 482 483 484 485 486 487 488 489 490 1 491 492 493 494 495 496 497 498 499 500 1 501 502 503 504 505 506 507 508 509 510 1 511 512 513 514 515 516 517 518 519 520 1 521 522 523 524 525 526 527 528 529 530 1 531 532 533 534 535 536 537 538 539 540 1 541 542 543 544 545 546 547 548 549 550 1 551 552 553 554 555 556 557 558 559 560 1 561 562 563 564 565 566 567 568 569 570 1 571 572 573 574 575 576 577 578 579 580 1 581 582 583 584 585 586 587 588 589 590 1 591 592 593 594 595 596 597 598 599 600 1 601 602 603 604 605 606 607 608 609 610 1 611 612 613 614 615 616 617 618 619 620 1 621 622 623 624 625 626 627 628 629 630 1 631 632 633 634 635 636 637 638 639 640 1 641 642 643 644 645 646 647 648 649 650 1 651 652 653 654 655 656 657 658 659 660 1 661 662 663 664 665 666 667 668 669 670 1 671 672 673 674 675 676 677 678 679 680 1 681 682 683 684 685 686 687 688 689 690 1 691 692 693 694 695 696 697 698 699 700 1 701 702 703 704 705 706 707 708 709 710 1 711 712 713 714 715 716 717 718 719 720 1 721 722 723 724 725 726 727 728 729 730 1 731 732 733 734 735 736 737 738 739 740 1 741 742 743 744 745 746 747 748

**FPL ENERGY**

### Seabrook Station

RESIDUAL HEAT REMOVAL SYS.  
TRAIN B CROSS-TIE  
DETAIL

PID- 1-RH-B20663