

PROJECT SEABROOK

STATION

HOLE LOCATION

ELEVATION

BEARING

INCLINATION

DEPTH 169'

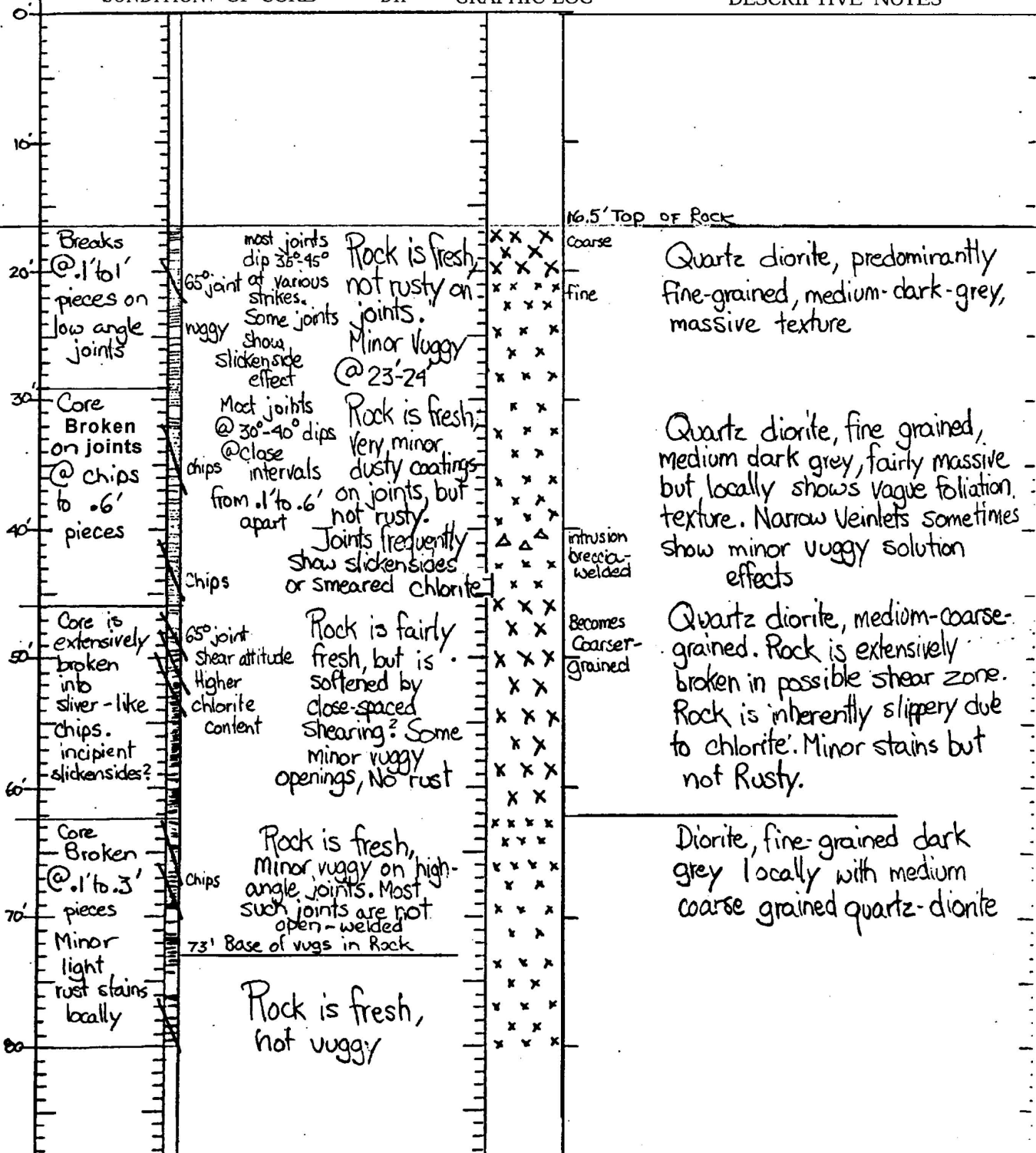
Logged By: J. R. Rand 11/24/72

CONDITION OF CORE

DIP

GRAPHIC LOG

DESCRIPTIVE NOTES



PROJECT SEABROOK STATION

DDH B-39

PAGE 1 of 1

HOLE LOCATION

ELEVATION

BEARING

INCLINATION

DEPTH 72'

Logged By: J. R. Rand 7/11/72

CONDITION OF CORE	DIP	GRAPHIC LOG	DESCRIPTIVE NOTES
0			1.5' Top of Rock -
Breaks @ chips to .8' pieces	chips chips	Rock is slightly weathered, pitted with weak rust staining on joints 60° to 70° joints @ 2' intervals	Diorite - light grey coarse grained
10'	chips chips		Diorite - medium dark grey, fine grained, massive
20'	chips in key Rusty	Rock is fresh - only occasional very minor rust staining on joints	pegmatite, quartz, feldspar with bull quartz in center Diorite dark grey fine grained, as above
30'	Breaks @ chips to 1.5' pieces		pegmatite veinlet
40'	Breaks @ .1' to 2' pieces	Rock is fresh minor staining on joints	Diorite, Dark grey, fine grained, with occasional coarse-grained zones
50'	Breaks @ chips to 3.5' pieces	Rock is fresh only minor rusty staining locally on joints slight weathering @ 64'	coarse coarse coarse Diorite dark grey, fine-grained, with occasional zones of intermixed light grey, coarse grained diorite
60'	chips Slight weathering chips	as shown	coarse
70'			Bottom of Hole
80'			

PROTECT SEABROOK

STATION

DDH U2-7

PAGE 2 of 2

HOLE LOCATION

ELEVATION

BEARING

INCLINATION

DEPTH 125.0'

Logged By: J. R. Rand 12/11/72

CONDITION OF CORE	DIP	GRAPHIC LOG	DESCRIPTIVE NOTES
70'			
80'	Breaks @ .1' to 1.5' pieces on low-angle joints	MOST JOINTS @ 20° TO 30° DIPS, @ .3' TO 1' INTERVALS 85° TO 90° JOINT	Rock is fresh. Not rusty on joints. Some pyrite coatings on joints
90'			Quartz diorite, predominantly micaceous (chloritic) fine-grained, dark-greenish grey
100'	Broken on low angle joints @ .5' to 1' intervals	JOINTS ARE CLEAN, LOW ANGLE @ 20° TO 30° 85° JOINT CALCITE FILLED NO SLICKENSIDES	Rock is fresh through-out
110'	Good drilling Breaks @ wide intervals	CLEAN LOW ANGLE JOINTS DRILLER	Rock is fresh through-out
120'			Quartz diorite, medium-coarse-grained, medium grey. locally intermixed with fine-grained diorite near top of section.
			Quartz diorite, intermixed coarse and fine grained rock types
			125' Bottom of Hole
130'			

PROJECT SEABROOK

STATION

HOLE LOCATION

ELEVATION 28.9'

BEARING

INCLINATION

DEPTH 150.1'

Logged By: J. R. Rand 12/26/72

CONDITION OF CORE	DIP	GRAPHIC LOG	DESCRIPTIVE NOTES
70'			
80'	Breaks @ wide spaces @ .5' to 3' pieces	Rock is fresh. Low angle joints @ wide intervals, up to 3' apart. Minor rust and slight weathering localized on high angle joints.	Quartz diorite, mixed fine grained dark grey patches in coarse grained lighter grey matrix. Become fine grained below 87.5'
90'	60° joint set minor rust slightly weathered		FINE GRAINED
100'	Breaks @ .5' to 3' pieces	60° joint, minor rust 1' Heavy rust, severely weathered 50° dip Rock is fresh, joints are clean 0.1' of soft severely weathered zone @ 95.7' to 95.4' dip 45°	COARSE GRAINED FINE GRAINED Low angle joints @ 30° to 40° dips @ .5' to 3' intervals 50° Foliation
110'	Breaks @ chips to .8' pieces	vertical joint clean 65° joints rusty Rock is fresh, locally rusty on joints. 119.7' to 120.8' is severely weathered zone. Soft, rusty, Rock in place but decomposed zone dips 45°	70° Contact TIGHT WELDED WITH CHILL ZONE Diabase Dike, very fine grained, sub-black, dark olivine speckling
120'	WEATHERED →	severe weathering on foliation for 1.1' of core minor rust vuggy 60° joint	65° CONTACT, TIGHT, WELDED, WITH CHILL ZONE Quartz diorite, medium-fine-grained medium grey. Fairly massive texture
130'	Breaks @ .1' to 3.5' pieces	Low angle joints @ about 30° dips Rock is fresh, not rusty on joints. Joints @ 30°	
140'	Breaks @ .3' to 1.6' pieces	70° joint clean Rock is fresh, No rust on joints.	Low angle joints @ 1' to 2' intervals. Rock Drills well
150'	55° joint clean		COARSE
			150.1' Bottom of Hole

PROJECT SEABROOK

STATION

HOLE LOCATION 20.300 N 79.400 E

ELEVATION

BEARING

INCLINATION

DEPTH

Loggea By: J . R . Rand 12/27/72

CONDITION OF CORE

DIP

GRAPHIC LOG

DESCRIPTIVE NOTES

0'				4'-Top of Rock
10'	Core breaks @ chips to .8' pieces	70° joint chips Rusty Chips 70° joint chips slight weathering Rusty	Rock is essentially fresh - locally slightly weathered on joints, minor rust - low angle joints dip 30° occur at .2' to 1' intervals	Quartz diorite, mixed fine-grained, dark grey and coarse-grained light grey matrix
20'		55° joint Rusty		agmatite veinlet
24'				24' bottom of hole
30'				
40'				

PROJECT SEABROOK STATION DDH E1-2 PAGE 1 of 1
HOLE LOCATION 20.450 N 79.500 E ELEVATION 21.4'
BEARING _____ INCLINATION _____ DEPTH _____
Logged By: J. R. Rand 12/27/72

CONDITION OF CORE	DIP	GRAPHIC LOG	DESCRIPTIVE NOTES
0			
10'			7.2' Top of Rock
Breaks @ 1' to 22' pieces	Rusty 70° Jts, minor rust	Rock is fresh - minor rusty stains on joints to 14' depth -	Quartz diorite, mixed fine-grained, dark grey and coarse-grained light grey matrix rock - porphyritic toward base
20'		Low angle joints dip about 30° throughout	Porphyritic
30'			27.2' Bottom of Hole
40'			

PROJECT SEABROOK E/ STATION

HOLE LOCATION

ELEVATION

BEARING

INCLINATION

DEPTH- 65.3'

Logged By: J. R. Rand 12/13/72

CONDITION OF CORE	DIP	GRAPHIC LOG	DESCRIPTIVE NOTES
0'			
10'			
Core is broken @ 20' Chips to 1' pieces on low- and high-angle joints	70° joint, rusty	Rock is fresh. Minor rusty staining on joints. At 25'-27' rock is subjected to vuggy solution effects.	boulder- Quartz diorite, micaceous, foliated 5, 3' Top of Rock predominantly fine-grained Quartz diorite, mixture of coarse and fine grained rock types predominantly coarse-grained high angle (70°-75°) intrusive contact, welded
Core breaks @ 30' Chips to .3' pieces on low- and high-angle joints	70° joint, rusty, vuggy 75° joint 70° joint 65° joints 80°-40° joint, chlorite smeared moderate weathering, heavy rust 70° joint, rusty	Rock is fresh. Prominent rust formation on joints. Joints occur at .1' to .3' intervals	Diabase dike, dark grey to sub-black, fine grained, massive with pyrite specks and knots. Rock closely jointed at various strikes and dips. Low angle (10°-30°) joints predominate.
Core Breaks @ 50' .1' to 2' pieces on 20°-30° low angle joints	rusty 75° joint, rust coated 75° joint, rust coated	Rock is fresh. Rusty coatings on low angle and high angle joints at widespread intervals as shown.	Diabase dike, as above, massive, sub-black, fine grained rock.
60'			
70'			
			5.3' Bottom of Hole

PROJECT SEABROOK

STATION

HOLE LOCATION

ELEVATION

BEARING

INCLINATION

DEPTH 33.0'

Logged By: J. R. Rand 12/17/72

CONDITION OF CORE	DIP	GRAPHIC LOG	DESCRIPTIVE NOTES
0'			
10'			
Core Breaks on 30° joints @ 6" to 2' intervals	Rusty Rusty	Rock is fresh, Joints normally are clean, but locally have rusty coating as shown. Joints dip 30° to 40°. No high angle joints.	3.0' Top of Rock Quartz diorite, medium grained, medium-dark greenish grey, speckled texture, massive.
30'	Rusty		Transitional Contact Quartz diorite, coarse grained light grey
40'			3.0' Bottom of Hole

PROJECT SEABROOK STATION

DDH D1-7

PAGE 1 of 2

HOLE LOCATION

ELEVATION

BEARING

INCLINATION

DEPTH 118.7'

Logged By: J. R. Rand 12/12/72

CONDITION	1 OF CORE	DIP	GRAPHIC LOG	DESCRIPTIVE NOTES
-----------	-----------	-----	-------------	-------------------

0'				
10'				
15.4'				Top of Rock
20'	Broken @ .1' to 2' pieces	Most joints @ 20°-30° dips 80° joint, clean 70° joint 80°-90° curved joint 60° joint	Rock is fresh, no rust on joints. Low angle (20°-30°) joints @ 1' to 2' intervals. High angle joints @ 1' to 4' intervals @ various orientations	Quartz diorite, predominantly fine grained, medium grey, locally, with high angle (70°-85°) foliation texture.
30'				
40'	Breaks @ .1' to 2' pieces	curved joint 70°-90° Pyrite 60°-70° joints on foliation	Rock is fresh. Joints tend to lie on foliation planes, but also cross-cut foliation planes. Pyrite on joints	Quartz diorite, fine-grained, foliated, Jointing frequently follows biotite concentrations along foliation planes. Also cross-cuts foliation at 30°-40° dips.
50'				
60'	Breaks @ .2' to 2' pieces	80° joint 60° joints joints @ 50°-60° dips	Rock is fresh. Joints follow both high-angle foliation and 30°-40° low angle. Variable joint patterns. No rust. Pyrite on some joints.	Quartz diorite, as above. Fine-grained foliated at 60°-80° dips
70'				
80'				

PROJECT SEABROOK STATION DDH D1-8 PAGE 1 of 1

HOLE LOCATION ELEVATION

BEARING INCLINATION DEPTH 29.5

Logged By: J. R. Rand 12/11/72

CONDITION OF CORE	DIP	GRAPHIC LOG	DESCRIPTIVE NOTES
6'			
10'			3' Top of Rock
Core Broken into chips CHIPS →	30° dipping joints @ 3'-6" intervals, slightly rusty	Rock is fairly fresh, rather highly jointed, which causes considerable chipping of core. Rock locally rusty on joints as shown	Quartz diorite, predominantly medium-fine-grained, locally foliated. Medium-grey color. Some minor vug development to about 20' depth. Foliation is very steep to vertical.
20'	70° joints, rusty		
CHIPS →	Joints not rusty, pyrite smeared		
30'			29.5' Bottom of Hole

PAGE (02)

ELEVATION

DEPTH

Logged By: J. R. Rand 12/13/72

CONDITION OF CORE		DIP	GRAPHIC LOG	DESCRIPTIVE NOTES
0'				
1.5'	Breaks @ .1' to 2' pieces on 30°-40° joints	70° joint, rusty	Rock is fresh. Breaks on 30°-40° dipping joints @ .3' to 1' intervals	1.5' Top of Rock Quartz diorite. Mixed fine-grained dark-grey micaceous rock in coarse-grained lighter grey matrix. Rock is foliated. Layering @ 60° dip
20'	.3' to 1.6' pieces	Rusty	Rock is fresh. Locally rusty staining on some joints.	anitic texture, foliated Porphyritic quartz diorite, as at bottom of hole D2-4
4.5'				4.5' Bottom of Hole

PROJECT SEABROOK

STATION

HOLE LOCATION

ELEVATION

BEARING

INCLINATION

DEPTH

Logged By: J. R. Rand 12/12/72

CONDITION OF CORE	DIP	GRAPHIC LOG	DESCRIPTIVE NOTES
0'			
10'			Boulders
12'			Top of Rock
Broken @ Chips to 1' pieces	65° joint 60°-70° joints Chips	Rock is fresh. Rusty staining on some joints, not on all joints. Rock breaks normally on 30°-40° dipping joints @ 1' intervals	Quartz diorite, medium-coarse grained, light medium grey. Locally foliated @ high angle (60°-70°) dips.
30'			
Breaks @ .3' to 2' intervals on 30°-40° joints	Rusty joint 60°-90° joint with pyrite	Rock is fresh. No rust on joints. High angle joints infrequent. Most breaks on 30°-40° joints	Relict quartzite layer, partially recrystallized by diorite(?)
40'			
50'			
Breaks @ .2' to 1.5' intervals	70°-90° joint with pyrite	Rock is fresh. Not rusty on joints. Most joints are @ 30° dips, not smooth. Some pyrite coatings on high angle joints	Quartz diorite, medium-coarse grained, medium light grey. Locally some foliation @ steep dips. Finer grained near top of section.
60'			
Smooth 60° joint with pyrite			finer grained
70'			
Breaks @ .3' to 3' intervals	65° joint	Rock is fresh, not rusty on joints. Most breaks on low-angle 20°-30° joints.	finer grained
80'			
			Quartz diorite, fine-grained medium grey, foliated. Foliation is steep, 60°-90° and wavy

PROJECT SEABROOK

STATION

DDH DI-10

PAGE 2 of 2

HOLE LOCATION



ELEVATION

BEARING

INCLINATION

DEPTH 112'

Logged By: J . R . Rand 12/12/72

CONDITION OF CORE	DIP	GRAPHIC LOG	DESCRIPTIVE NOTES
80' Breaks @ Chips to 1' pieces clips Broken on smooth 85°-90° joint	Rock is fresh. Breaks on low angle (10°-30°) joints High angle (85°-90°) joint set @ 90' depth has pyrite coating		very fine-grained rock, massive, welded Quartz diorite, fine-grained, medium-grey, foliated Becomes coarse-grained rock
100' Breaks @ 1' to .6' pieces throughout 70°-90° rough joint	High angle joints are curved, have chlorite or biotite smooth surfaces with pyrite		
112' Bottom of Hole			

PROJECT SEABROOK

STATION

DDH D1-11

PAGE 1 of 1

HOLE LOCATION

ELEVATION

BEARING

INCLINATION

DEPTH 65.5'

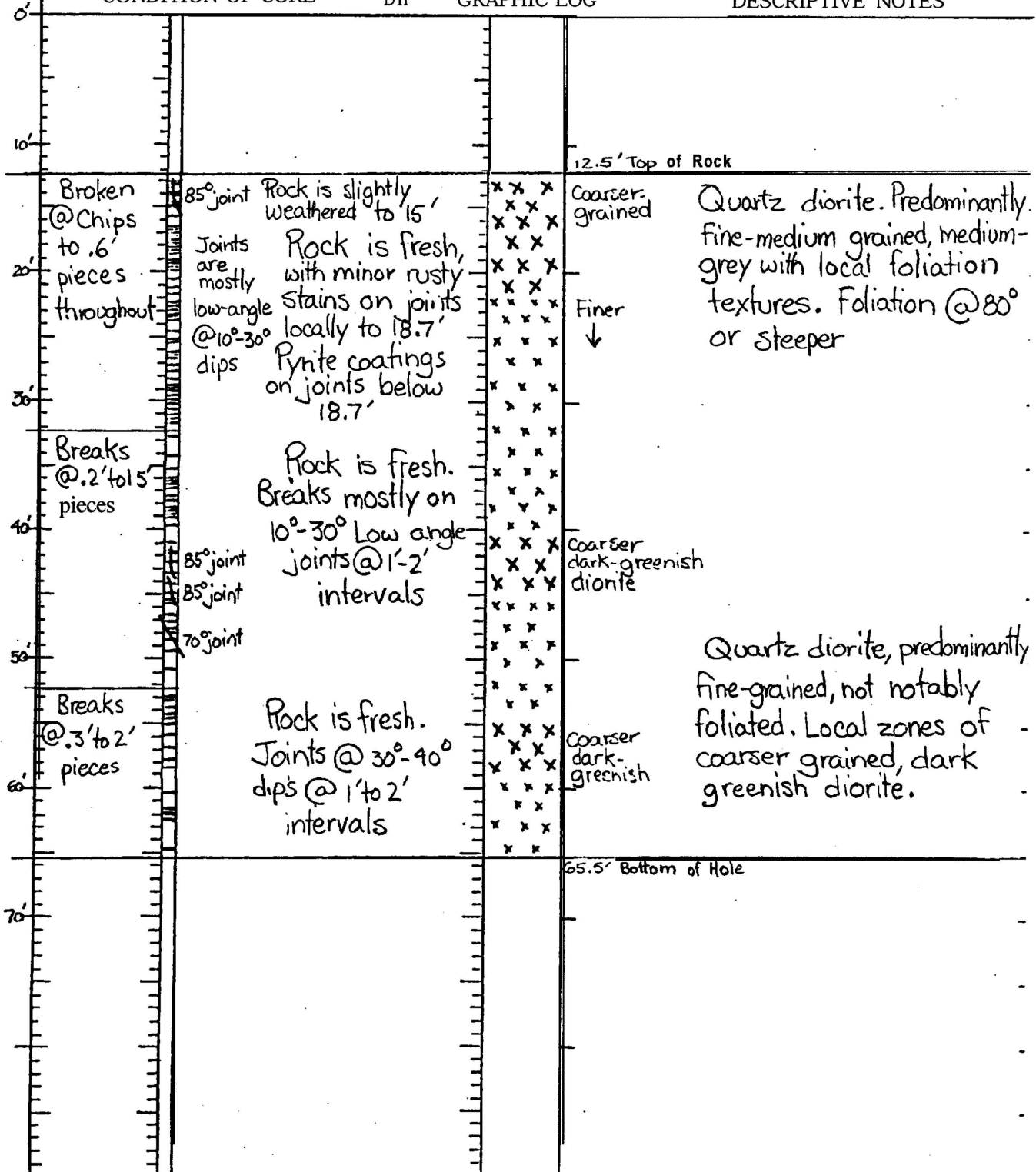
Logged By: J. R. Rand 12/12/72

CONDITION OF CORE

DIP

GRAPHIC LOG

DESCRIPTIVE NOTES



PROTECT SEABRCOK STATION DDH DI-12 PAGE I of I

HOLE LOCATION ELEVATION

BEARING INCLINATION DEPTH 29.5'

Logged By: J R. Rand 1/13/72

CONDITION OF CORE	DIP	GRAPHIC LOG	DESCRIPTIVE NOTES
0'			
10'			1.5' Top of Rock
Rock Breaks @ .3' to 1' pieces	Joints @ 30°-40° dips throughout	Rock is fresh. Minor rusty staining on some joints	MICACEOUS Quartz diorite, fine grained, quite micaceous (biotite) in zones and knots, enclosed in coarse-grained quartz diorite matrix.
Breaks @ .1' pieces	Rusty, slight weathering on joints	Rock is fresh, subject to minor weathering and rusty staining on joints.	Micaceous rock
.5' to 1.3' pieces	65° joint	Rock is Fresh, Not Rusty	Micaceous rock type is not apparently metasedimentary. Has rather massive texture
20'			
30'			29.5' Bottom of Hole

PROJECT SEABROOK

STATION

DDH D2-1

PAGE 1 of 1

HOLE LOCATION

ELEVATION

BEARING

INCLINATION

DEPTH 31.0'

Logged By: J. R. Rand 12/12/72

CONDITION OF CORE	DIP	GRAPHIC LOG	DESCRIPTIVE NOTES
0'			
6'			
Rock Breaks @ .1' to 1.5' pieces on low angle (30°) joints	25° joint	Rock is moderately weathered, rusty, vuggy	3 boulders - quartz diorite
20'		Rock is fresh, minor rusty staining on some joints	11' Top of Rock
30'		.2' severe weathering, soft	Quartz diorite, predominantly fine-grained medium grey, with occasional zones of coarser-grained, light-medium-grey matrix.
.1' to .4' pcs.		MINOR RUST ON ONE JOINT	Rock becomes a little coarser grained
40'			11' Bottom of Hole

PROJECT SEABROOK

STATION

HOLE LOCATION

ELEVATION

BEARING

INCLINATION

DEPTH 60.0'

Logged By: J. R. Rand

CONDITION OF CORE	DIP	GRAPHIC LOG	DESCRIPTIVE NOTES
0'			
10'			
20'			
25.2'			Top of Rock
Core breaks on joints @ Chips to .5' pieces	Chips, minor rust 65° joint, rusty Rusty 60° joint CHIPS RUSTY	Rock is slightly weathered to about 31'. Fresh below 31'. Joints show local rust coatings and some slight rock weathering.	DIABASE DIKE, WELDED CONTACTS DIP 60° Quartz diorite, fairly coarse-grained, medium-grey micaceous
40'	Core Breaks @ Chips to 1' pieces	Chips, minor rust Most joints @ 30°-40° dips 65° joint	50° intrusive contact, welded Diabase dike, sub-black, fine-grained
50'	Chips to 3.3' piece	Chips, minor rust 60° joint, powder coating	50° intrusive contact, welded Quartz diorite, predominantly coarse-grained QUARTZITE INCLUSION(?) 50° intrusive contact, welded
60'			Diabase dike, sub-black, fine grained, crystalline hill zone at base - Near a contact(?) 2.0' Bottom of Hole

PROJECT SEABROOK

STATION

DDH D-2-4

PAGE 1 of 3

HOLE LOCATION

ELEVATION

BEARING

INCLINATION

DEPTH 171.0'

Logged By: J. R. Rand 11/24/72

CONDITION OF CORE

DIP

GRAPHIC LOG

DESCRIPTIVE NOTES

0'

10'

20'

30'

40'

50'

60'

70'

80'

Core is
Broken @
places
Shown in
"Condition"
Column

Breaks
in
Core
as
Shown

Breaks
in
Core
as
Shown

Rock is fresh, not
weathered.
30° joint, smooth,
clean, no rust
30° joint, no rust
30° joint, clean on 30° dip.
Very thin veinlets.
No slickensides

slight bleaching.
Rock is strong.

30° dip on
veinlets in
Breccia
zone
Rock is fresh,
as above

Core breaks are
characteristically @ 30°
dip attitudes

Rock is fresh,
as above. Tends
to part on 30°
dipping joints,
or very thin 30°
veinlets

driller break

21.5' Top of Rock

Quartz diorite, medium-grey,
medium-coarse-grained,
with local fine-grained
dark grey diorite zones
as shown. Rock is predominantly
finer-grained diorite.
Fresh, crystalline

mixed coarse and
fine diorite

Fine-grained

52.1' to 53.5' is welded, healed, solid breccia zone

Diorite, as above, mixed
coarse-grained light grey quartz
diorite matrix, enclosing fine-
grained, dark grey diorite inclusions.

Rock becomes predominantly
coarse-grained, with relatively
small zones of fine-grained
diorite.

PROJECT SEABROOK

STATION

HOLE LOCATION

ELEVATION

BEARING

INCLINATION

DEPTH

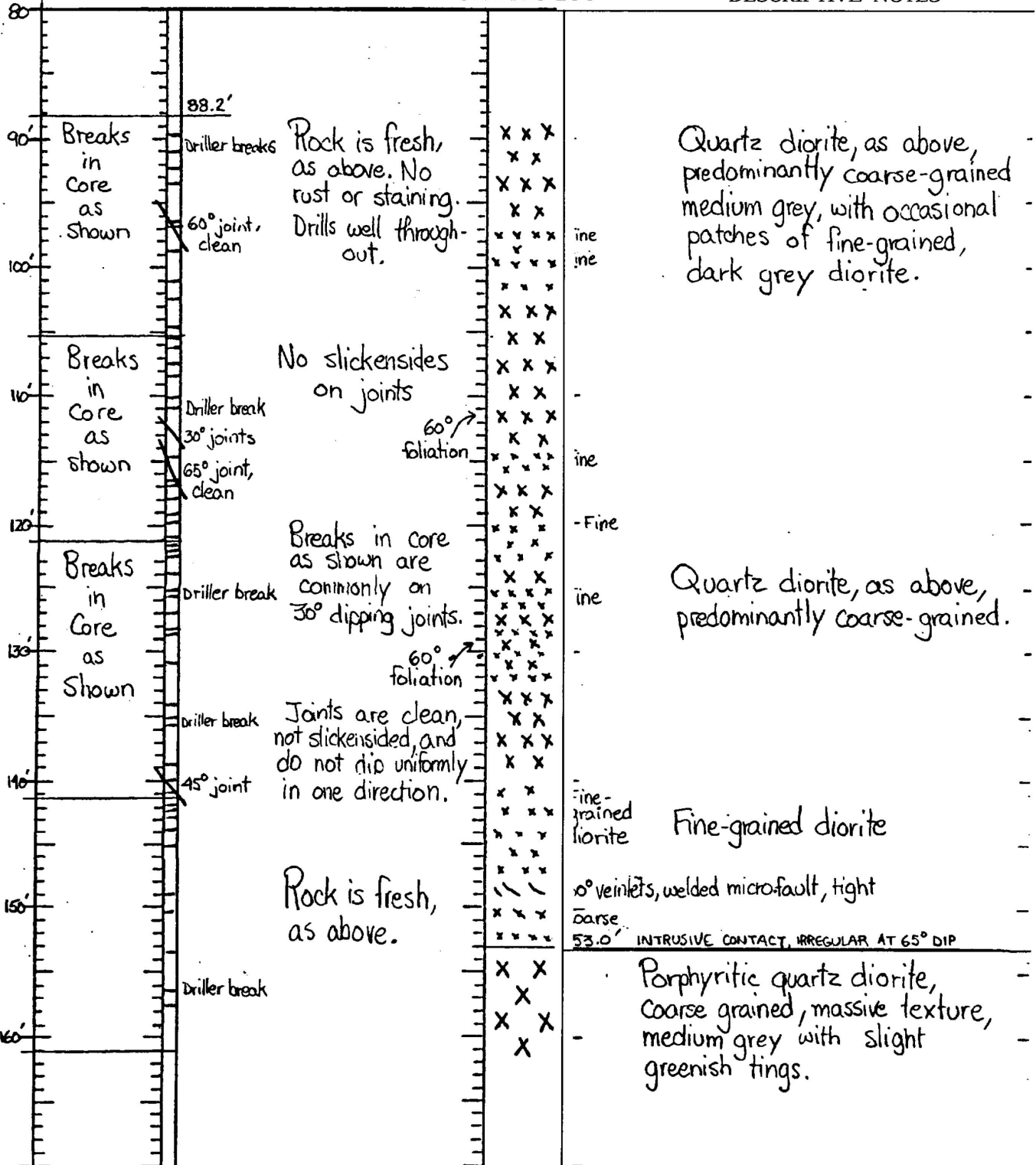
Logged By: J. R. Rand 11/24/72

CONDITION OF CORE

DIP

GRAPHIC LOG

DESCRIPTIVE NOTES



PROJECT SEABROOK

STATION

DDH D2-4

PAGE 3 of 3

HOLE LOCATION

ELEVATION

BEARING

INCLINATION

DEPTH 171'

Logged By: J. R. Rand 11/24/72

CONDITION OF CORE

DIP

GRAPHIC LOG

DESCRIPTIVE NOTES

150'

160'

170'

180'

Core
Broken
as
shownRock is fresh,
not weatheredx x
x
x x
x x
x xPorphyritic quartz-diorite,
massive, coarse-grained, medium-
grey.

" Bottom Of Hole

PROJECT SEABROOK STATION DDH D2-5 PAGE 1 OF 1

HOLE LOCATION _____ ELEVATION _____

BEARING _____ INCLINATION _____ DEPTH 65.0'

Logged By: J. R. Rand 12/11/72

CONDITION OF CORE	DIP	GRAPHIC LOG	DESCRIPTIVE NOTES
10'			Boulder zone in overburden, fine-grained diorite
20'			19.0' Top of Rock
30'			
40'			
50'			
60'			
70'			

Rock Breaks @.3'to2' intervals on low angle joints

Joints are low-angle @ 20°-30°

Rock is fresh immediately below bedrock surface.

65°
60°

Quartz diorite, intermixed coarse- and fine-grained rock types. Locally foliated at high angle dips as shown.

Rock Breaks @.3'to2' intervals on low-angle joints

Joints are predominantly low angle @ 20°-30°

Rock is fresh through out.

60°

fine
quartz vein

Rock Breaks @1'to3' intervals

slight weathering @ 57.0'

Rock is fresh.

60°

Fine

Fine-grained quartz diorite, medium grey, massive, pepper-salt texture

← slight rust on open foliation plane

coarse

65' Bottom of Hole

DDH 8 |

PAGE 2 of 2

PROJECT SEABROOK

STATION

HOLE LOCATION

ELEVATION

BEARING

INCLINATION

DEPTH 99.2'

Logged By: J. R. Rand 7/10/72

	CONDITION OF CORE	DIP	GRAPHIC LOG	DESCRIPTIVE NOTES
60'				
70'				
80'	Breaks @ .1' to 1.5' pieces Rusty		Rock is fresh. Good drilling. locally is minor rust. Stained on joints + + + + + +	Diabase - Dark-grey, fine-grained with small dark green phenocryst speckling
90'	Breaks @ chips to .8' pieces Rusty Rusty Rusty Rusty		Rock is fairly fresh to fresh. local rust on joints + + + + + + +	Diabase - Dark-grey, fine grained with small dark-green phenocryst speckling
100'				99.2' Bottom of Hole
110'				

DDH B-7

PAGE 1 of 1

PROJECT SEABROOK

STATION

HOLE LOCATION

ELEVATION

BEARING

INCLINATION

DEPTH 34.3'

Logged By: J. R. Rand 7/12/72

CONDITION OF CORE	DIP	GRAPHIC LOG	DESCRIPTIVE NOTES
0'			
10'			
Breaks @ Chips to 1.4' pieces	CHIPS	Rock moderately weathered. Rusty stained. Minerals discolored. Rock is fairly fresh, showing rusty staining only on partings.	13' Top of Rock Diorite - coarse grained, light grey Porphyritic
20'	CHIPS		
30'	CHIPS	Rock is fresh with only minor rusty staining on some joints.	Mica Schist - very fine grained Grey. wavy foliation. Steep dip to foliation. (80°) Locally fine quartzitic rock. Schist - fine grained grey mica - Schist - sub-vertical foliation
40'			34.3' Bottom of Hole

PROJECT SEABROOK

STATION

DDH B-8

PAGE 1 of 1

HOLE LOCATION

ELEVATION

BEARING

INCLINATION

DEPTH 25.4'

Logged By: J. R. Rand 7/11/72

CONDITION OF CORE	DIP	GRAPHIC LOG	DESCRIPTIVE NOTES
Breaks @chips to .8' pieces	CHIPS CHIPS CHIPS CHIPS	Rock is fresh with only minor rusty staining, slight mineral discoloration on some joints	4.2' Top of Rock COARSE Diorite, fine-grained, Dark- grey, massive, with local intermix of coarse-grained light grey porphyritic diorite.
CHIPS TO .6' pieces	CHIPS CHIPS	Slight to moderate weathering, Rust, DISCOLORED	COARSE COARSE At base fine diorite is dis- colored to dull brown, (mod. weathering)
25.4' Bottom of Hole			

PROJECT SEABROOK

STATION

HOLE LOCATION

ELEVATION

BEARING

INCLINATION

DEPTH 31.5'

Logged By: J. R. Rand 7/11/72

CONDITION OF CORE		DIP	GRAPHIC LOG	DESCRIPTIVE NOTES
0'				
10'	Breaks @ 1' to 2' pieces			11' Top of Rock
20'	Rusty			Diorite, intermixed dark grey, fine grained rock and coarser grained, porphyritic light grey rock.
	Rusty			Predominantly a fine-grained rock type.
30'	.2' to .6' pcs.			MEDIUM DARK GREY FINE-GRAIN DIORITE
				31' Bottom of Hole
40'				

PAGE | of |

STATION

ELEVATION

DEPTH 28.0'

Logged By: J. R. Rand 7/11/72

DESCRIPTIVE NOTES

Diorite, Dark-grey,
Fine-grained type predominates

1

Diorite, mixed dark grey,
Fine-grained in light grey,
Coarse-grained porphyritic

Rock is fresh

8' Bottom of Hole.

PROJECT SEABROOK

STATION

HOLE LOCATION

ELEVATION

BEARING

INCLINATION

DEPTH 31.0'

Logged By: J. R. Rand 7/10/72

CONDITION OF CORE		DIP	GRAPHIC LOG	DESCRIPTIVE NOTES
0				Top of Rock 4' (?)
CHIPS ONLY (may be boulder zone)			x x x x x x x x x	Porphyritic Diorite (boulder?)
10	chips to .2'		+ + + + + + + + +	Diabase Dike(?) or Diabase boulder(?)
				POSSIBLE TRUE TOP OF ROCK: 13'
.5' to 1.5' pieces	70° joint 60° joint Rusty		x x	Bedrock: porphyritic diorite with local zones of medium grey, fine grained diorite.
20	Drake @ .1' to 1' intervals Rusty pitted		x x	80° Min. Silicified zone
30				31' Bottom of Hole
40				

PROJECT SEABROOK

STATION _____

HOLE LOCATION _____

ELEVATION _____

BEARING _____

INCLINATION _____

DEPTH 160.0'

Logged By: J. R. Rand

CONDITION OF CORE	DIP	GRAPHIC LOG	DESCRIPTIVE NOTES
30'			
40'			
50'			
60'			30' Top of Rock
Core breaks in chips to .3' pieces throughout	Rock is slightly to moderately weathered, Local decom- position, some rusty staining on partings	35° 45°	Metasediment - feldspathic schist, locally quartzitic light grey fine grained rock - evenly foliated.
70'			
80'			
90'			

PROJECT SEABROOK

STATION

HOLE LOCATION

ELEVATION

BEARING

INCLINATION

DEPTH 160.0'

Logged By: J. R. Rand

CONDITION OF CORE	DIP	GRAPHIC LOG	DESCRIPTIVE NOTES
<p>Breaks @ chips to .2' pieces throughout</p> <p>Breaks @ chips to .4' pieces throughout</p> <p>Breaks @ chips to .8' pieces</p> <p>Chips to .6' pieces</p>	<p>Rock is moderately weathered throughout, somewhat softened, bleached, with dull iron staining on joints, tan bleaching in micas. Poor coring rock</p> <p>Moderately weathered rock, somewhat bleached, vuggy along foliation planes, some light rusty staining Not a strong rock inherently</p> <p>Moderately to slightly weathered rock</p> <p>Rock become fairly fresh</p> <p>Rock is fairly fresh, minor rust on partings</p>		<p>Metasediment - fine-grained feldspathic schist, locally light grey quartzitic</p> <p>Fine-grained, light grey feldspathic schist - Fairly evenly foliated rock</p> <p>Feldspathic schist - locally interlayered with 1/4" quartzite beds</p> <p>Feldspathic schist, light grey, fine grained.</p>
			160' Bottom of Hole

PROJECT SEABROOK

STATION

DDH B-19

PAGE 1 of 1

HOLE LOCATION

ELEVATION

BEARING

INCLINATION

DEPTH 67.0'

Logged By: J. R. Rand 7/10/72

CONDITION OF CORE	DIP	GRAPHIC LOG	DESCRIPTIVE NOTES
0'			
10'			
20'			
30'			
40'			
47'			47' Top of Rock
50'			
60'			
70'			
			7' Bottom of Hole

Rock Broken
@ Chips
to .3'
pieces

OCCA-
SIONALLY
VUGGY

Rock is slightly
weathered, dis-
colored through-
out, minor
staining on
joints and
partings

Foliation
Dip

Graphic log showing wavy, variable foliation with 'x' marks indicating rock breaks.

Metasedimentary Rock
Feldspathic (quartzitic?) schist.
Foliation wavy, variable.
Light grey, fine-grained -
Rock breaks both on foliation
and across core.

PROJECT SEABROOK

STATION

HOLE LOCATION

ELEVATION

BEARING

INCLINATION

DEPTH **1000** b'

Logged By: J. R. Rand 7/11/72

CONDITION OF CORE	DIP	GRAPHIC LOG	DESCRIPTIVE NOTES
20'			
30'			
40'			34' Top of Rock
50'			Predominantly metasediment. Quartzitic to feldspathic schist, fine-grained (bleached due to weathering), locally interlayered with bleached decomposed coarse-grained diorite(?)
60'			TRANSITIONAL (INTRUSIVE) CONTACT
70'			Diorite, coarse-grained porphyritic. Bleached to light tannish grey, locally layered,
80'			Gradational into feldspathic, quartzitic schist, light-grey fine to medium fine grained
90'			Metasediment - feldspathic schist, fairly fine-grained, evenly foliated. light to medium grey micas locally discolored to tan brown
100'			100' Bottom of Hole

PROJECT SEABROOK STATION _____

HOLE LOCATION _____

ELEVATION _____

BEARING _____ INCLINATION _____

DEPTH 150.0'Logged By: J. R. Rand 7/11/72
7/12/72

CONDITION OF CORE	DIP	GRAPHIC LOG	DESCRIPTIVE NOTES
0'			
10'			
20'			
30'			
40'			
50'			
60'			
70'			
80'			

Note: Smooth or polished surfaces seen on occasional joint planes. Not characteristic of whole rock.

Boulder zone: mixed diorite, granite and dark-grey massive quartzite boulders

50' Base of Boulders - Top of Rock

Breaks @ Chips to .5' pieces

CHIPS

Rock is slightly weathered, some rusty staining on joints and partings, minor solution effects

Schist - feldspathic, locally quartzitic. Light-grey, fine-grained evenly foliated rock

HIPS

LICKENSIDES

HIPS

CHIPS

CHIPS

CHIPS

CHIPS

Chips to 1' pieces

Rock is fairly fresh throughout minor powdery stains on partings

Quartzitic

Feldspathic

Schist - quartzitic Fine-grained, light grey evenly foliated.

Minor slickensides on joints

PROJECT SEABROOK STATION DDH B-21 PAGE 2 of 2

HOLE LOCATION _____ ELEVATION _____

BEARING _____ INCLINATION _____ DEPTH 150.0'

Logged By: J. R. Rand 7/12/72

70	CONDITION OF CORE	DIP	GRAPHIC LOG	DESCRIPTIVE NOTES
80'	Breaks @ Chips to .2' pieces throughout	CHIPS	Rock is fairly fresh but poor drilling — Parts on both joints and partings Local minor rust staining	Schist, feldspathic as below
90'		CHIPS	55°	
100'	Breaks @ Chips to .6' pieces throughout	CHIPS	Rock is fairly fresh throughout locally subject to Rusty staining on joints and partings	Schist, feldspathic, may be quartzitic locally. Fine-grained, light grey Evenly Foliated
110'		CHIPS	55°	
120'	Breaks @ Chips to .8' pieces	CHIPS	Rock is fairly fresh throughout, subject to light staining on joints and partings	Schist, feldspathic, light grey, fine grained. Local feldspar stringers Rock is evenly foliated Quartzitic/Feldspathic
130'		CHIPS	45°	
140'	Breaks @ Chips to .6' pieces	CHIPS	Some joints show slickensides covered with powder coating	Feldspathic
150'	Chips to .8' pieces	CHIPS	Rock is fresh, minor staining on joints, breaks on both joints and partings	Feldspathic
150'		CHIPS	Rock is fairly fresh through out.	Feldspathic schist, light-medium-grey, fine grained, Evenly foliated rock
	Notes: some minor polishing on joints — not characteristically fault slickensides			150' Bottom of Hole

PROJECT SEABROOK

STATION _____

DDH B-23

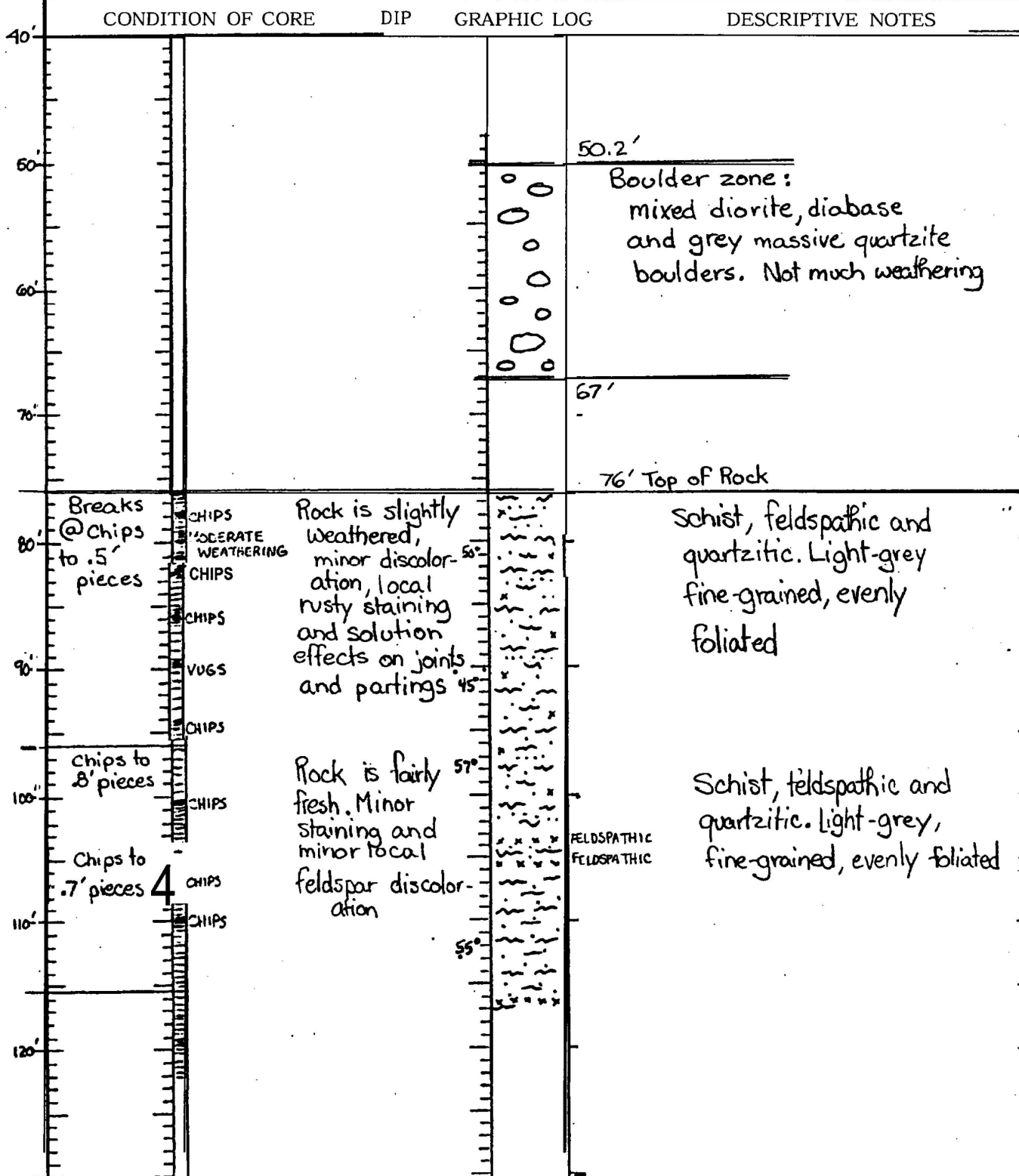
PAGE 1 of 2

HOLE LOCATION _____

ELEVATION _____

BEARING _____

INCLINATION _____

DEPTH 176.0'Logged By: J.R.R and 7/12/72

PROJECT SEABROOK

STATION

DDH 8-23

PAGE 2 of 2

HOLE LOCATION

ELEVATION

BEARING

INCLINATION

DEPTH 176.0'

Logged By: J. R. Rand

CONDITION OF CORE	DIP	GRAPHIC LOG	DESCRIPTIVE NOTES
100'			
110'			
CHIPS to .5' pieces			ELDSPATHIC ELDSPATHIC
CHIPS			Schist - feldspathic, Quartzitic, light-grey, fine-grained, evenly foliated
CHIPS			
CHIPS			
CHIPS, VUGGY			
CHIPS	58°		(NO MOVEMENT ON DIABASE CONTACTS) 2. INTRUSIVE CONTACT. NO DISPLACEMENT EVIDENCE
Breaks @ Chips to .5' pieces			Diabase - fine grained, sub-black, phenocryst speckling
CHIPS, BLEACHED			ROCK IS BLEACHED (CHILLED ZONE ?) TO TAN
CHIPS			CONTACT DIPS 55° NORMAL TO SCHISTOCITY NO DISPLACEMENT EVIDENCE ON CONTACT
Breaks @ Chips to .4' pieces			EGMATITE VENNET
CHIPS			Schist - Quartzitic, somewhat feldspathic, fine-grained, medium light- grey. Evenly foliated
CHIPS			
CHIPS			
.1' to .6' pieces			Diabase - fine grained dark- grey to black. Speckled phenocrysts.
			176' Bottom of Hole
180'			

PROJECT SEABROOK

STATION

HOLE LOCATION

ELEVATION

BEARING

INCLINATION

DEPTH 121.0'

Logged By: J. R. Rand 7/11/72

CONDITION OF CORE	DIP	GRAPHIC LOG	DESCRIPTIVE NOTES
70'			
80'			
Breaks @ .3' to 1.5' pieces	RUSTY, WEATHERING	Rock is slightly to moderately weathered. Minor pitting; veinlets discolored to tan. Local rusty zones on joints	Intermixed fine-grained Dark-grey Diorite and light grey coarse-grained Diorite. Fine-grained rock type predominates. Rock discolored a little by weathering.
90'			
Breaks @ Chips to 1.5' pieces	CHIPS	Rock is slightly to moderately weathered. Minor pitting. Feldspar veinlets are discolored to tan. Rock not notably weak.	
100'			
Chips to 1.5' pieces	MODERATE WEATHERING, MODERATE RUST	Rock is slightly to moderately weathered through out. Feldspars discolored in veinlets. Local rusty zones on joints	Intermixed fine-and coarse-grained Diorite. High angles veining at 6" to 1' intervals. Rock is discolored by weathering. (SLIGHT TO MODERATE WEATHERING - COMPACT)
110'			
120'			
			121' Bottom of Hole

PROJECT SEABROOK

STATION

HOLE LOCATION

ELEVATION

BEARING

INCLINATION

DEPTH 23.0'

Logged By: J. R. Rand 7/11/72

	CONDITION OF CORE	DIP	GRAPHIC LOG	DESCRIPTIVE NOTES
0'				3' Top of Rock
10'	Breaks @ Chips to 2.5' pieces	CHIPS, RUSTY	Rock is fresh subject to local rusty staining on joints. High angle joints @ 5' intervals	FINE FINE FINE FINE FINE FINE
20'				23' Bottom of Hole
30'				

HOLE LOCATION

ELEVATION

BEARING

INCLINATION

DEPTH 23.7'

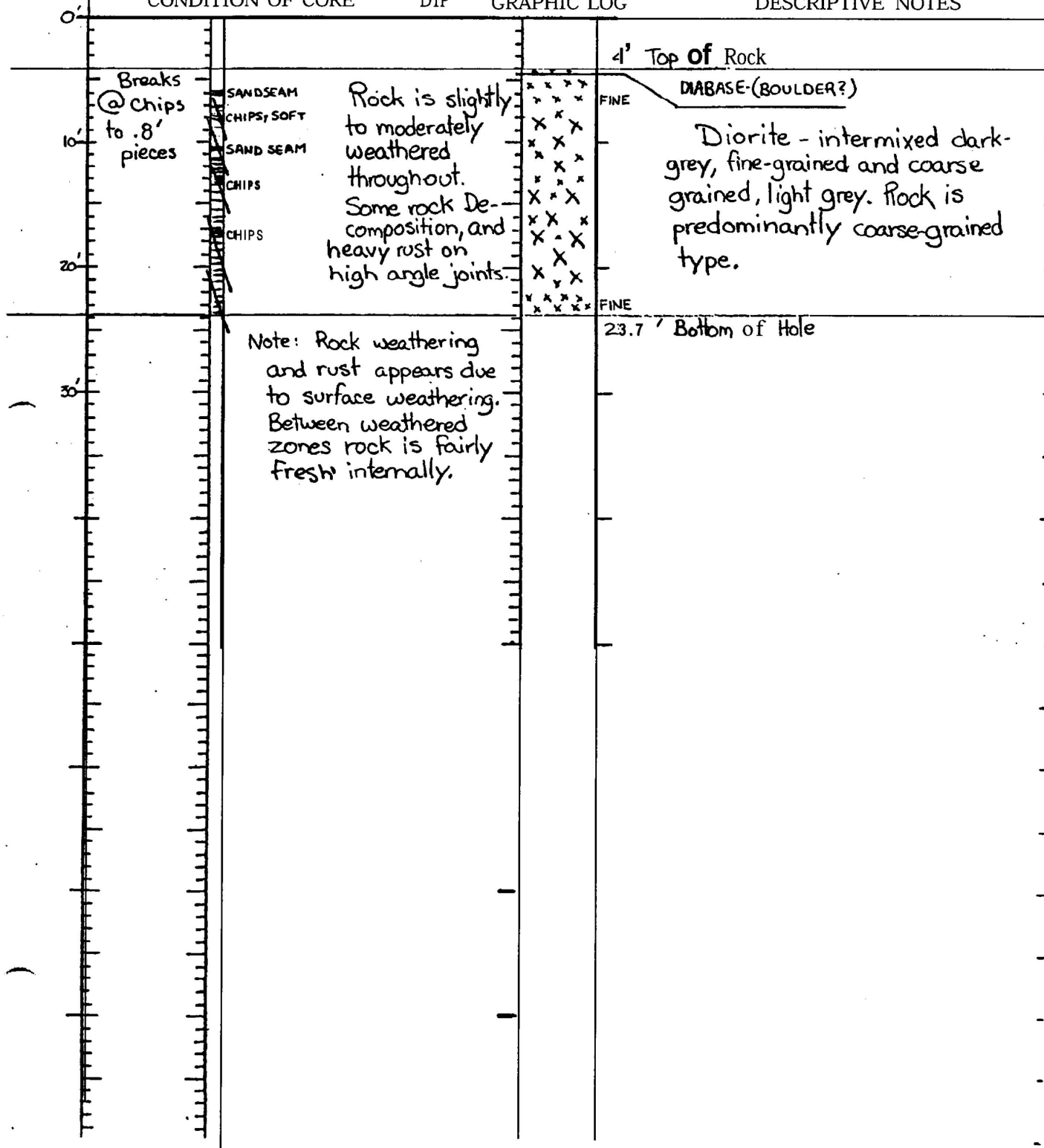
Logged By: J. R. Rand 7/12/72

CONDITION OF CORE

DIP

GRAPHIC LOG

DESCRIPTIVE NOTES



PROJECT SEABROOK

STATION _____

DDH B-30

PAGE 1 of 1

HOLE LOCATION _____

ELEVATION _____

BEARING _____

INCLINATION _____

DEPTH 27.0'Logged By: J. R. Rand 7/10/72

CONDITION OF CORE	DIP	GRAPHIC LOG	DESCRIPTIVE NOTES
0'			
		FOLIATION ↓	7' Top of Rock
10' Breaks @ .1' to 2' pieces	50° joint 30° joint	Rock is fresh, only local rusty staining on joints. Mostly 60° Low angle (30°) joints	Diorite, medium grey, medium coarse-grained, locally with foliated grey granite zones.
20' 1' to 1.5' pieces	30° joint	Rock is fresh. Biotite may be slightly weathered	Porphyritic Diorite, Biotite Spotting
30'			27' Bottom of Hole

PROJECT SEABROOK

STATION

HOLE LOCATION


ELEVATION

BEARING

INCLINATION

DEPTH 23.0'

Logged By: J. R. Rand 7/10/72

CONDITION OF CORE		DIP	GRAPHIC LOG		DESCRIPTIVE NOTES
0'					3' Top of Rock
Breaks @ Chips to 1' pieces	CHIPS		Rock is slightly weathered, subject to brown iron staining on joints @ 6" to 1' intervals	 COARSE COARSE COARSE COARSE FINE-GRAINED DIORITE	Diorite - intermixed dark-grey fine-grained and light-grey coarse-grained types. Coarser-grained rock tends to weather more than Fine-grained
1' to .8' pieces	RUSTY VERTICAL JOINT				Porphyritic Diorite
			Rock is fresh but rusty staining on joints to bottom. Biotite is slightly weathered to show rusty brown streak. No slickensides		23' Bottom of Rock
30'					

PROJECT SEABROOK

STATION

HOLE LOCATION

ELEVATION

BEARING

INCLINATION

DEPTH 41.6'

Logged By: J. R. Rand 7/10/72

CONDITION OF CORE	DIP	GRAPHIC LOG	DESCRIPTIVE NOTES
0'			2.5' Top of Rock
Rock Broken @ chips to 1' pieces	CHIPS		Diorite - fine-grained, medium-dark grey Occasional small white phenocrysts
10'			
20'			
Breaks @ .2' to 1' intervals	CHIPS		
30'	25° joint		Generally fine-grained, medium-light grey Diorite with local zones of porphyritic Diorite
40'	50° joint 60° joint (minor pyrite) THIN OR RUST		
.2' to 1.2' intervals			DRUSY QUARTZ AND CALCITE LINED VUG
41.6'			41.6' Bottom of Hole

PROJECT SEABROOK STATION DDH 8-37 PAGE | of |

HOLE LOCATION ELEVATION

BEARING INCLINATION DEPTH 44.0'

Logged By: J. R. Rand 7/10/72

CONDITION OF CORE	DIP	GRAPHIC LOG	DESCRIPTIVE NOTES
0'			6' Top of Rock
10'	CHIPS Breaks @ chips to 1' pieces 70° joint	Rock is fresh Some slight weathering and iron staining on joints. Joints @ 30° dip @ 1'-4' intervals	COARSE Diorite - medium fine-grained medium dark-grey, massive
20'	CHIPS MODERATE WEATHERING WITH RUSTY JOINTS 65° joint	Rock is generally fresh with thin rusty staining on joints.	PEGMATITE Medium fine grained medium grey massive Diorite
30'	MINOR RUST 65° joint	Rock is fresh. No rust except as shown. No slickenside	High angle joints @ about 1' intervals
40'	CHIPS Breaks @ chips to 1' pieces	Rock is fresh Not rusty on joints	PEGMATITE WITH GARNET, TOURMALINE(?) AND FINE SULPHIDE STRINGERS
44'			Bottom of Hole

PROJECT SEABROOK

STATION

HOLE LOCATION

ELEVATION

BEARING

INCLINATION

DEPTH 152.5'

Logged By: J. R. Rand 7/10/72

CONDITION OF CORE

DIP

GRAPHIC LOG

DESCRIPTIVE NOTES

