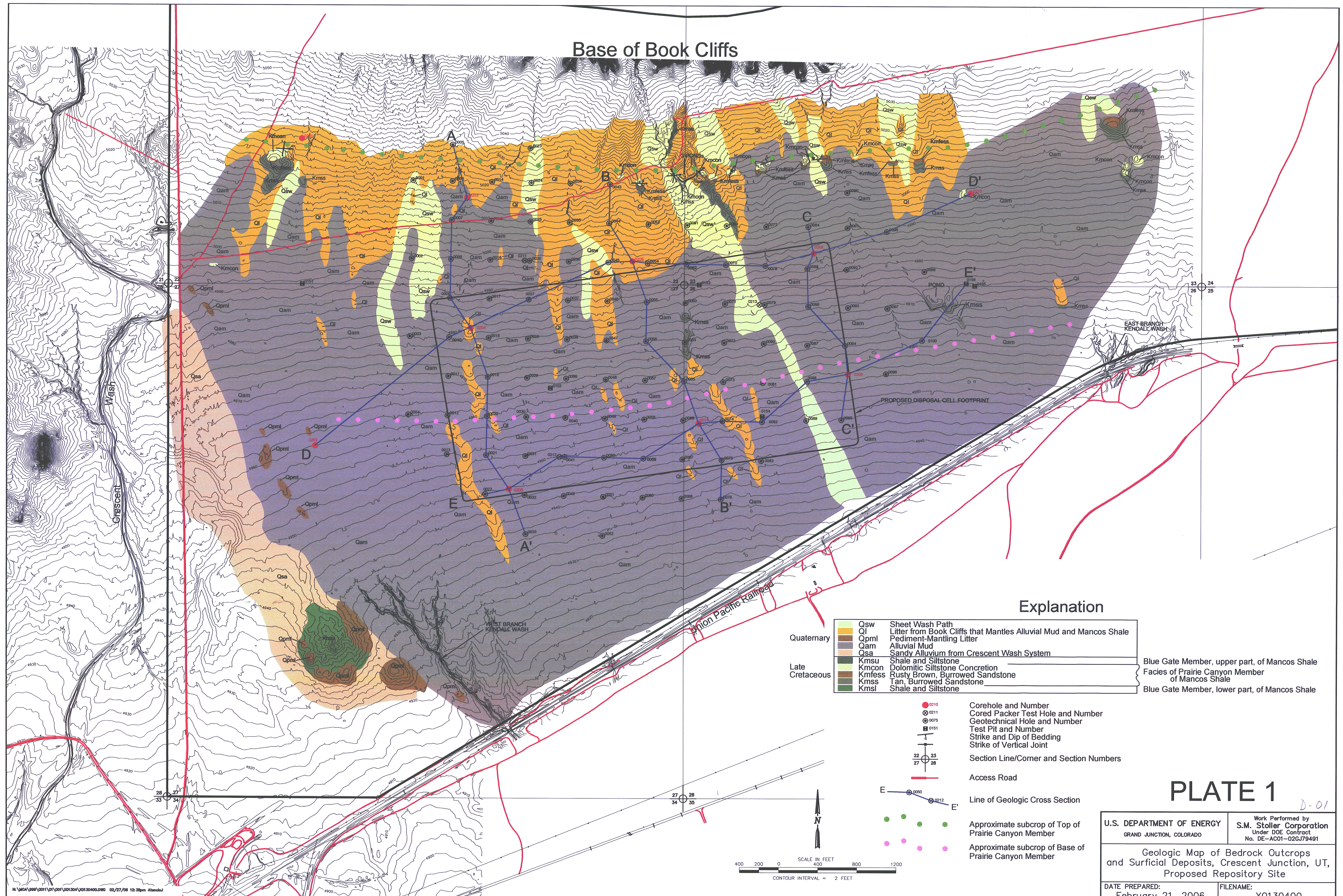


Base of Book Cliffs



Explanation

Quaternary	Qsw Sheet Wash Path		
	Ql Litter from Book Cliffs that Mantles Alluvial Mud and Mancos Shale		
	Qpml Pediment-Mantling Litter		
	Qam Alluvial Mud		
	Qsa Sandy Alluvium from Crescent Wash System		
Late Cretaceous	Kmsu Shale and Siltstone		Blue Gate Member, upper part, of Mancos Shale
	Kmcon Dolomitic Siltstone Concretion		Facies of Prairie Canyon Member of Mancos Shale
	Kmfess Rusty Brown, Burrowed Sandstone		
	Kmss Tan, Burrowed Sandstone		Blue Gate Member, lower part, of Mancos Shale
	Kmsl Shale and Siltstone		

● 0210	Corehole and Number
⊗ 0211	Cored Packer Test Hole and Number
⊙ 0075	Geotechnical Hole and Number
■ 0151	Test Pit and Number
— 8	Strike and Dip of Bedding
— 22 23	Strike of Vertical Joint
— 27 26	
—	Section Line/Corner and Section Numbers
—	Access Road
E — 0050 — 0212 — E'	Line of Geologic Cross Section
● ● ● ● ●	Approximate subcrop of Top of Prairie Canyon Member
● ● ● ● ●	Approximate subcrop of Base of Prairie Canyon Member

PLATE 1

U.S. DEPARTMENT OF ENERGY GRAND JUNCTION, COLORADO	Work Performed by S.M. Stoller Corporation Under DOE Contract No. DE-AC01-02GJ79491
Geologic Map of Bedrock Outcrops and Surficial Deposits, Crescent Junction, UT, Proposed Repository Site	
DATE PREPARED: February 21, 2006	FILENAME: X0130400