



HYDRO - ENGINEERING, LLC



August 29, 2006

Mr. William Von Till
Chief, Uranium Processing Section
Fuel Cycle Facilities Branch
Division of Fuel Cycle Safety and Safeguards
Office of Nuclear Material Safety and Safeguards
U.S. Nuclear Regulatory Commission
11545 Rockville Pike
Rockville, Maryland 20852-2738

Re: Docket No. 40-6622, License No. SUA-442

Dear Mr. Von Till:

Enclosed please find two copies of the semi-annual ground water monitoring report as required by SUA-442 license condition 47C. This report presents data through the second quarter, 2006; historical data are included in the concentration versus time plots that are required by condition 47C. Please call me if you have any questions regarding the report.

Sincerely,

A handwritten signature in cursive script that reads 'Tom Hardgrove'.

T. W. Hardgrove
Manager, Reclamation Operations

Enclosure

cc: D. B. Spitzberg, U.S. NRC – Region IV
D. L. Wichers

**SEMI-ANNUAL
GROUND-WATER MONITORING
FOR SHIRLEY BASIN MINE**

PREPARED FOR:

**PATHFINDER MINES CORPORATION
SHIRLEY BASIN MINE**

BY:

HYDRO-ENGINEERING, L.L.C.

AUGUST, 2006

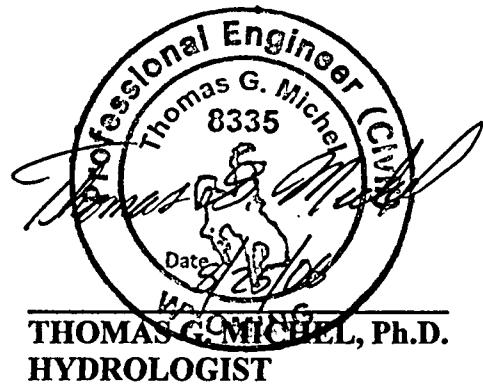


TABLE OF CONTENTS

	<u>Page Number</u>
1.0 INTRODUCTION AND SUMMARY OF RESULTS.....	1
2.0 PIEZOMETRIC DATA	1
3.0 WATER-QUALITY DATA	2

FIGURES

	<u>Page Number</u>
1 LOCATIONS OF MONITORING WELLS AND PIEZOMETRIC CONTOURS FOR MID 2006	4
2 WATER-LEVEL ELEVATION VERSUS TIME FOR WELLS MC-14, RPI-14, NP01, RPI-19B AND RPI-18A	5
3 2006 CHLORIDE CONCENTRATIONS IN SURFICIAL AQUIFER MONITORING WELLS.....	6
4 CHLORIDE CONCENTRATION VERSUS TIME FOR WELLS MC-14, RPI-14, NP01, RPI-19B, AND RPI-18A	7
5 CHLORIDE CONCENTRATION VERSUS TIME FOR SURFACE WATER SAMPLE LOCATIONS SW-1A, SC-2 AND POE-DS	8
6 2006 Ra226 + Ra228 ACTIVITIES IN SURFICIAL AQUIFER MONITORING WELLS.....	9
7 Ra226 + Ra228 ACTIVITY VERSUS TIME FOR WELLS MC-14, RPI-14, NP01, RPI-19B AND RPI-18A	10
8 Ra226 + Ra228 ACTIVITY VERSUS TIME FOR SURFACE WATER SAMPLE LOCATIONS SW-1A, SC-2 AND POE-DS	11
9 2006 SELENIUM CONCENTRATIONS IN SURFICIAL AQUIFER MONITORING WELLS.....	12
10 SELENIUM CONCENTRATION VERSUS TIME FOR WELLS MC-14, RPI-14, NP01, RPI-19B AND RPI-18A	13

TABLE OF CONTENTS
(continued)

FIGURES

	<u>Page Number</u>
11 SELENIUM CONCENTRATION VERSUS TIME FOR SURFACE WATER SAMPLE LOCATIONS SW-1A, SC-2 AND POE-DS	14
12 2006 SULFATE CONCENTRATIONS IN SURFICIAL AQUIFER MONITORING WELLS.....	15
13 SULFATE CONCENTRATION VERSUS TIME FOR WELLS MC-14, RPI-14, NP01, RPI-19B AND RPI-18A	16
14 SULFATE CONCENTRATION VERSUS TIME FOR SURFACE WATER SAMPLE LOCATIONS SW-1A, SC-2 AND POE-DS	17
15 2006 THORIUM-230 ACTIVITIES IN SURFICIAL AQUIFER MONITORING WELLS.....	18
16 THORIUM-230 ACTIVITY VERSUS TIME FOR WELLS MC-14, RPI-14, NP01, RPI-19B AND RPI-18A	19
17 THORIUM-230 ACTIVITY VERSUS TIME FOR SURFACE WATER SAMPLE LOCATIONS SW-1A, SC-2 AND POE-DS	20
18 2006 TDS CONCENTRATIONS IN SURFICIAL AQUIFER MONITORING WELLS.....	21
19 TDS CONCENTRATION VERSUS TIME FOR WELLS MC-14, RPI-14, NP01, RPI-19B, AND RPI-18A	22
20 TDS CONCENTRATION VERSUS TIME FOR SURFACE WATER SAMPLE LOCATIONS SW-1A, SC-2 AND POE-DS	23
21 2006 URANIUM CONCENTRATIONS IN SURFICIAL AQUIFER MONITORING WELLS.....	24
22 URANIUM CONCENTRATION VERSUS TIME FOR WELLS MC-14, RPI-14, NP01, RPI-19B AND RPI-18A	25
23 URANIUM CONCENTRATION VERSUS TIME FOR SURFACE WATER SAMPLE LOCATIONS SW-1A, SC-2 AND POE-DS	26

TABLES

Page Number

1	GROUND-WATER PROTECTION STANDARDS AND MAY 2006 WATER-QUALITY DATA FOR POINT-OF-COMPLIANCE WELLS NP01 AND RPI-19B	1
2	MONITOR WELL WATER-LEVEL AND WATER-QUALITY DATA	27
3	SURFACE WATER MONITORING DATA	34

1.0 Introduction and Summary of Results

This semi-annual report presents the results of ground-water monitoring and surface-water monitoring through sampling in May 2006 for Pathfinder Mines Corporation's Shirley Basin mill and tailings facility. This report is the second in the series of semi-annual reports required NRC License SUA-442, License Condition 47.C.

The following table lists the site standards that are in effect for POC wells NP01 and RPI-19B which are located to the east of the Shirley Basin tailings facility. The tabulation also lists the measured May 2006 concentrations for the POC wells. All of the present concentrations in the POC wells are significantly below the corresponding site standards.

TABLE 1. GROUND-WATER PROTECTION STANDARDS AND MAY 2006 WATER-QUALITY DATA FOR POINT-OF-COMPLIANCE WELLS NP01 AND RPI-19B.				
		WELL NP01		WELL RPI-19B
	POC WELL NP01	MAY 2006	POC WELL RPI-19B	MAY 2006
CONSTITUENT	SITE STANDARD	SAMPLE RESULTS	SITE STANDARD	SAMPLE RESULTS
ARSENIC	0.05	0.005	0.05	0.005
BARIUM	1.00	<0.1	1.00	<0.1
BERYLLIUM	0.02	<0.01	0.02	<0.01
CADMIUM	0.01	<0.01	0.01	<0.01
CHROMIUM	0.05	<0.05	0.05	<0.05
GROSS ALPHA	15	<1.0	15	<1.0
LEAD	0.05	<0.05	0.05	<0.05
MOLYBDENUM	0.10	<0.10	0.10	<0.10
NICKEL	0.05	<0.05	0.05	<0.05
RA-226 + RA-228	12.70	<1.2	13.76	<1.2
SELENIUM	0.158	0.063	0.163	0.003
THORIUM-230	5.53	<0.2	5.76	<0.2
URANIUM	4.40	0.0754	4.45	0.0700
CHLORIDE	3275	29	3712	21
TDS	11529	344	12641	778
SULFATE	4612	67	5056	209
NOTE: All concentrations in mg/l except for radium, thorium, and gross alpha in pCi/l.				

2.0 Piezometric Data

The water-level data collected during 2005 and early 2006 are presented in Table 2 along with the 2004 water-level data to provide some indication of recent trends. Figure 1 presents the piezometric surface of the Surficial aquifer in the area between the tailings and Spring Creek. Figure 2 presents plots of the water-level elevation versus time for wells MC-14, RPI-14, NP01, RPI-19B, and RPI-18A. The corresponding water-level elevation or constituent concentration is posted adjacent to the well location on the plan view figures of the area (such as Figure 1). Water-level elevations in 2004 and 2005 have reflected some decay of the ground-water mounds in the area of the recharge lines. This decay of the ground-water mounds can be attributed to recent discontinuation of the recharge injection operations and some disruption of collection and injection operations over the last two years by tailings area reclamation activities. There was a modest general increase in water-level elevations

in 2006. The piezometric surface is expected to approach a relatively steady condition with a general gradient from the tailings area to Spring Creek over the next one to two years.

3.0 Water-Quality Data

License Condition 47.A requires monitoring of water quality from the POC wells, other selected wells, and from surface water sites for the constituents presented in Table 1.

Figure 3 presents the May 2006 chloride concentrations for the Surficial aquifer and in Spring Creek at the surface water sampling sites. The chloride concentration is greatest at well P-6 which is located approximately 700 feet east of the tailings in the southern portion of the monitoring area. With the exception of a moderately elevated chloride concentration at well MC-11, chloride concentrations at the other monitoring wells and in the surface water samples are not significantly elevated over natural levels. Figure 4 presents the plots of chloride concentration versus time for wells MC-14, RPI-14, NP01, RPI-19B, and RPI-20A. As indicated in Table 2, chloride concentration at well P-6 is increasing, but the concentrations at other wells are relatively steady. Figure 5 presents the plots of chloride concentration at surface water sampling locations SW-1A, SC-2 and POE-DS.

Figure 6 presents the May 2006 Ra226 + Ra228 activities for the Surficial aquifer and in Spring Creek at the surface water sampling sites. There is a very modestly higher Ra226 + Ra228 activity in well MC-11. Measured radium, thorium, and gross alpha activities are typically more erratic than other constituents, and therefore iso-concentration contours are less reliable indicators of the extent of seepage impacts. Figure 7 presents the plots of Ra226 + Ra228 activity versus time for wells MC-14, RPI-14, NP01, RPI-19B, and RPI-20A. The greater variability of measured activity for Ra226 + Ra228 is reflected in the plot. Figure 8 presents the plots of Ra226 + Ra228 activities at surface water sampling locations SW-1A, SC-2 and POE-DS.

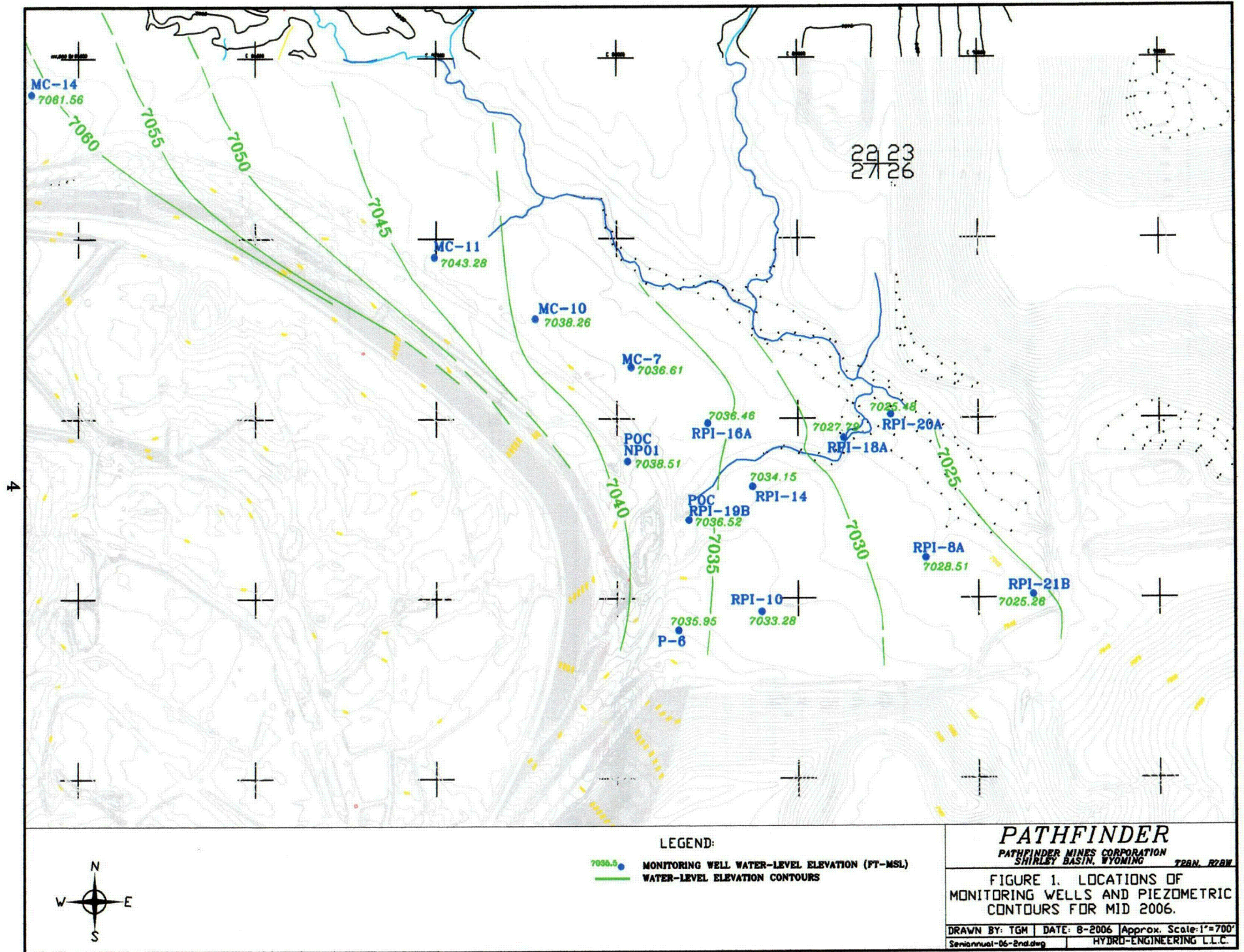
Figure 9 presents the May 2006 selenium concentrations for the Surficial aquifer and in Spring Creek at the surface water sampling sites. Selenium concentration is greatest at well MC-7 but the level is only slightly greater than that at wells P-6, RPI-16A, and NP01. In general, the selenium concentration is more indicative of natural variability and selenium concentration in recharge injection water than a discernable level of seepage impacts. Figure 10 presents the plots of selenium concentration versus time for wells MC-14, RPI-14, NP01, RPI-19B, and RPI-20A. Figure 11 presents the plots of selenium concentration at surface water sampling locations SW-1A, SC-2 and POE-DS.

Figure 12 presents the May 2006 sulfate concentrations for the Surficial aquifer and in Spring Creek at the surface water sampling sites. Recent sulfate concentration at well RPI-20A appears to be slightly elevated and the late 2005 sample has an unusually large concentration as indicated by the data record in Table 2. Because the concentrations of other constituents in samples from well RPI-20A are relatively stable and within the range of typical background or restored aquifer values, the temporary increase in sulfate concentration is not of great concern. Figure 13 presents the sulfate concentrations in selected wells and illustrates relatively stable recent concentrations. All sulfate concentrations at the monitoring wells and surface water sampling locations are well below the site standards at the POC wells. Figure 14 presents the plots of sulfate concentration at surface water sampling locations SW-1A, SC-2 and POE-DS.

Figure 15 presents the May 2006 thorium-230 activities for the Surficial aquifer and in Spring Creek at the surface water sampling sites. All May 2006 thorium-230 activities in ground-water samples and surface-water samples are below the detection level of 0.2 pCi/l. Figure 16 presents the plots of thorium-230 activity versus time for wells MC-14, RPI-14, NP01, RPI-19B, and RPI-20A. Figure 17 presents the plots of thorium-230 activity at surface water sampling locations SW-1A, SC-2 and POE-DS. The sample record for site SW-1A illustrates the variability of thorium-230 activity with occasional spikes interspersed in the typical below detection limit sample activity.

Figure 18 presents the May 2006 TDS concentrations for the Surficial aquifer and in Spring Creek at the surface water sampling sites. TDS concentration at well RPI-20A reflects the unusually large sulfate concentration in this well in late 2005 with the gradual decline in both TDS and sulfate concentrations in 2006. Like sulfate concentration, recent TDS concentrations have been relatively stable as shown in Figure 19. All TDS concentrations at the monitoring wells and surface water sampling locations are well below the site standards at the POC wells. Figure 20 presents the plots of TDS concentration at surface water sampling locations SW-1A, SC-2 and POE-DS.

Figure 21 presents the May 2006 uranium concentrations for the Surficial aquifer and in Spring Creek at the surface water sampling sites. Uranium concentration is increasing at well P-6, but is relatively stable at other locations (see Figure 22). All uranium concentrations at the monitoring wells and surface water sampling locations are well below the site standards at the POC wells. Figure 23 presents the plots of uranium concentration at surface water sampling locations SW-1A, SC-2 and POE-DS.



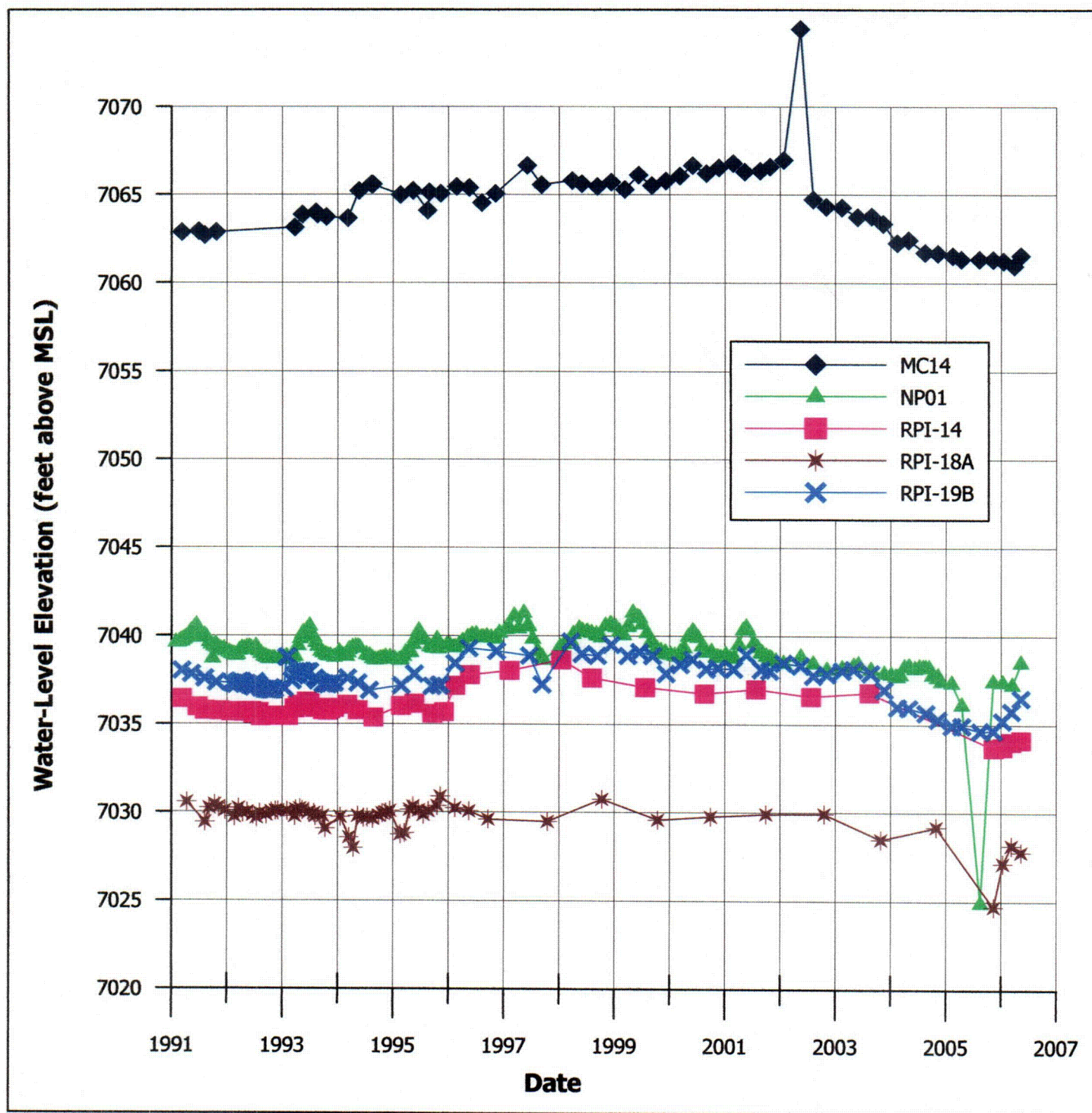
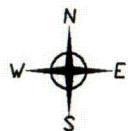
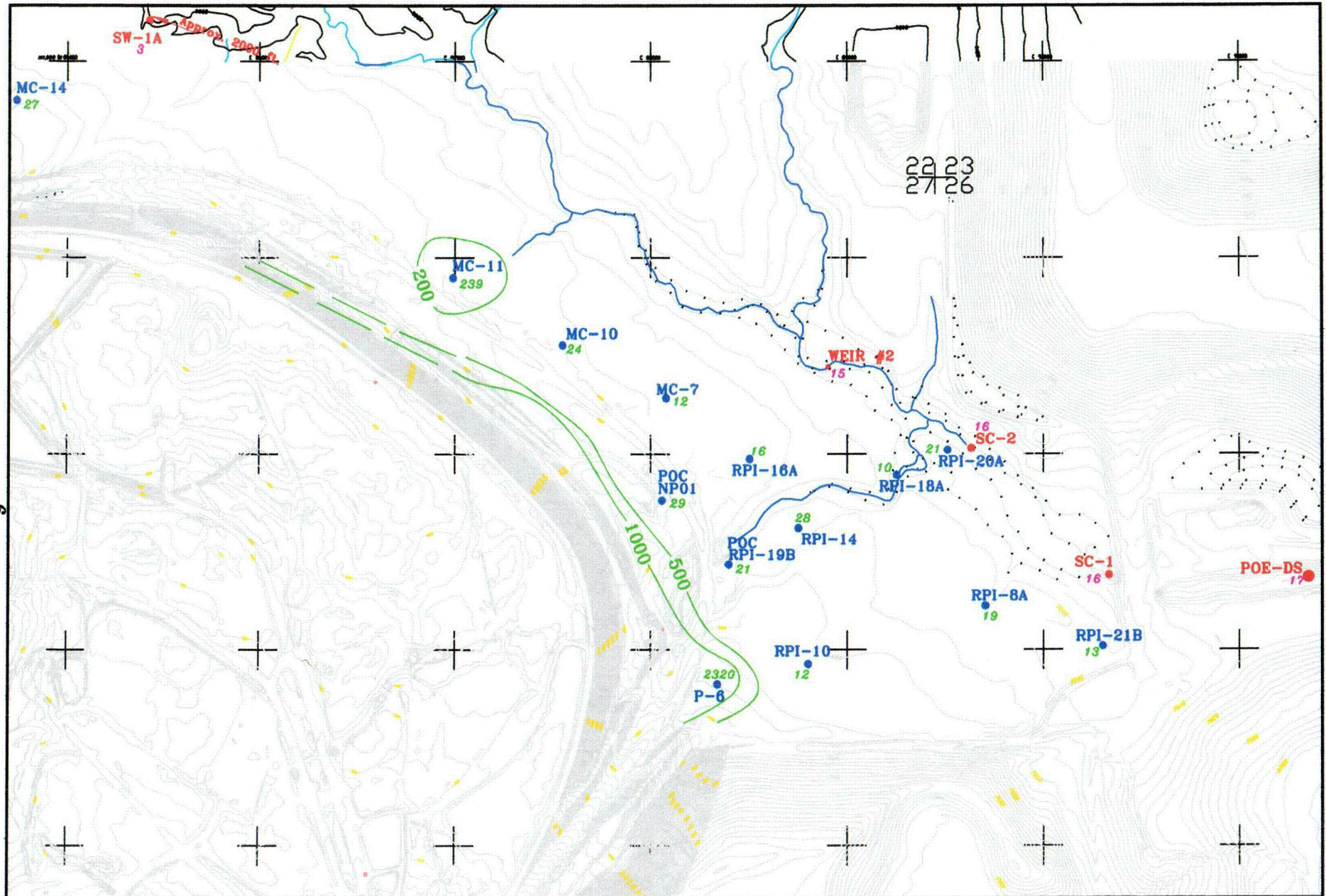


Figure 2. Water-Level Elevation Versus Time For Wells MC-14, RPI-14, NP01, RPI-19B, and RPI-18A



LEGEND:

- 28 MONITORING WELL CHLORIDE CONCENTRATION (mg/l)
- CHLORIDE ISO-CONCENTRATION CONTOURS
- 10 SURFACE WATER CHLORIDE CONCENTRATION (mg/l)

PATHFINDER

PATHFINDER MINES CORPORATION
SHIRLEY BASIN, WYOMING T28N, R28W

FIGURE 3. 2006 CHLORIDE
CONCENTRATIONS IN SURFICIAL
AQUIFER MONITORING WELLS.

DRAWN BY: TGM | DATE: 8-2006 | Approx. Scale: 1"=700'
Semiannual-06-2nd.dwg | HYDRO-ENGINEERING LLC

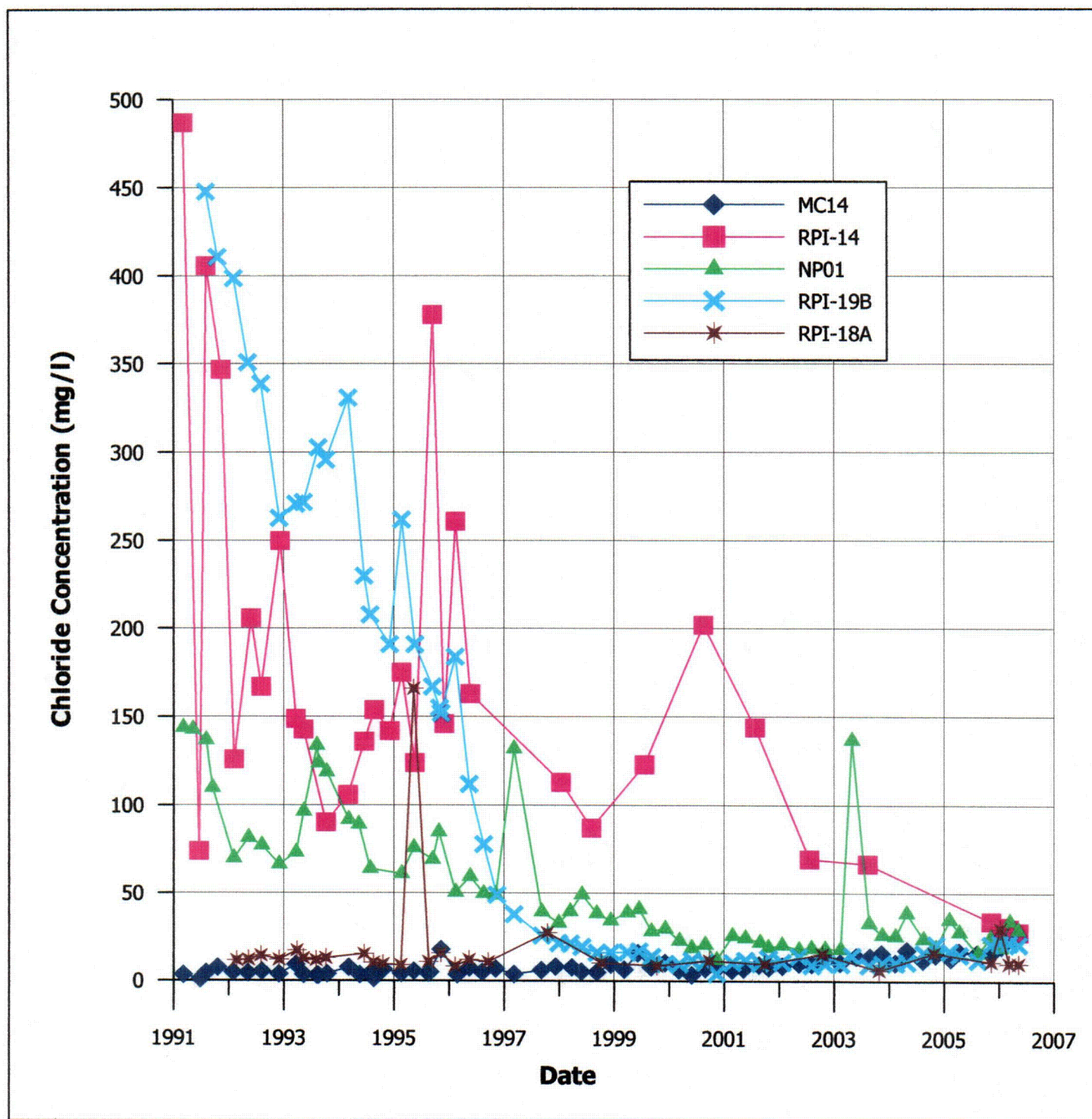
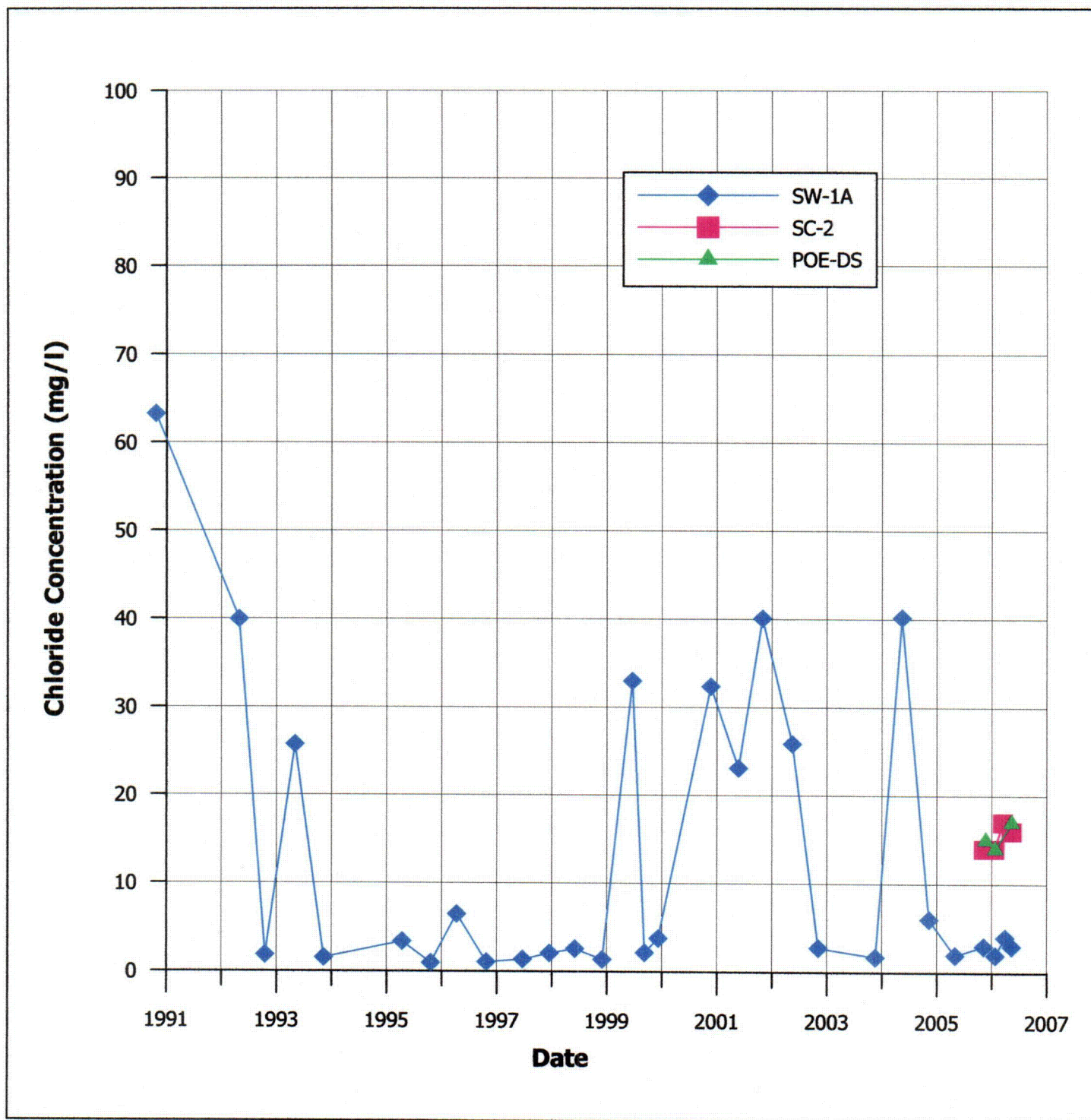
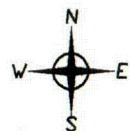
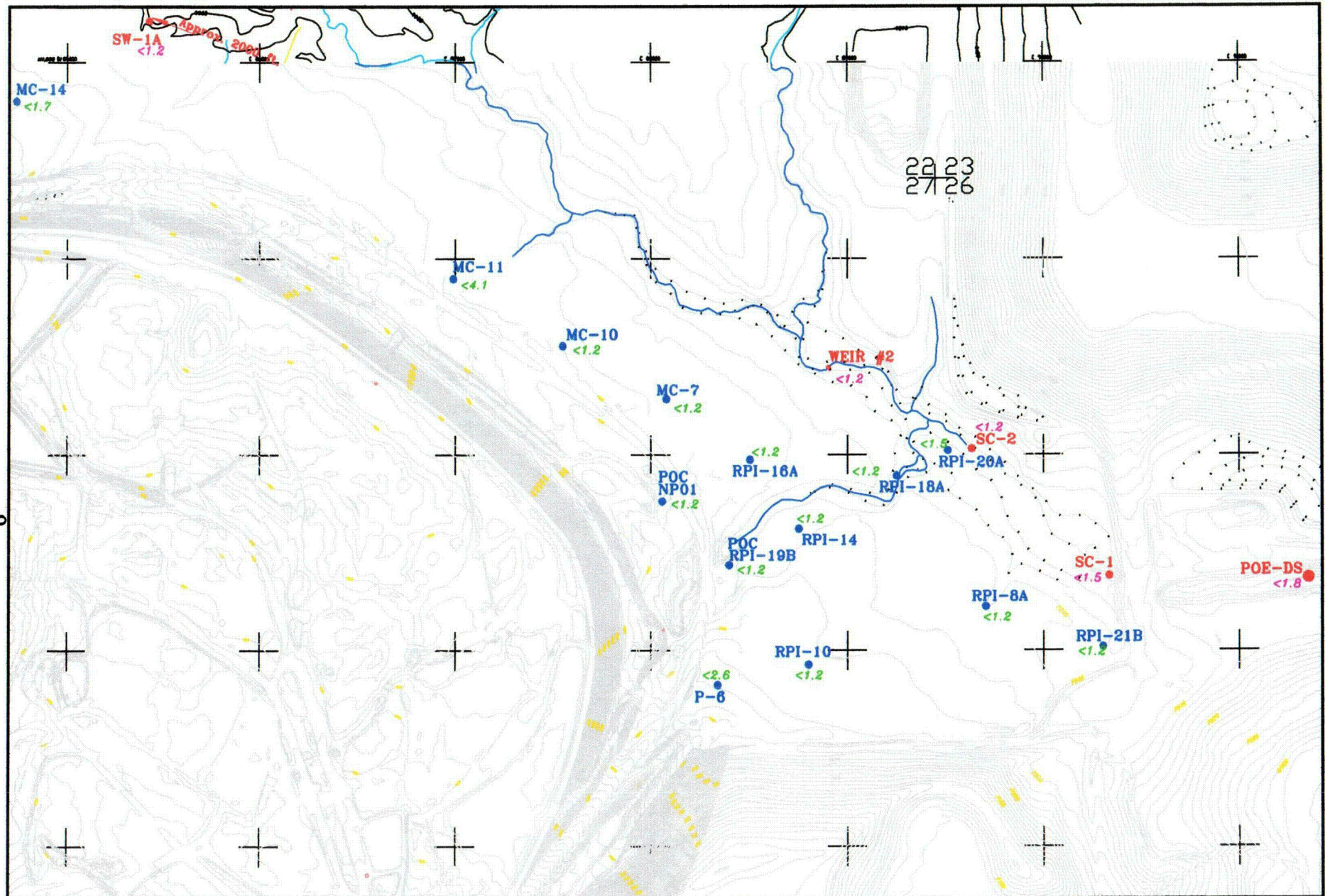


Figure 4. Chloride Concentration Versus Time For Wells MC-14, RPI-14, NP01, RPI-19B, and RPI-18A





LEGEND:

- <2.6 MONITORING WELL Ra226+Ra228 ACTIVITY (pCi/l)
- Ra226+Ra228 ISO-ACTIVITY CONTOURS
- <1.5 SURFACE WATER Ra226+Ra228 ACTIVITY (pCi/l)

PATHFINDER

PATHFINDER MINES CORPORATION
SHIRLEY BASIN, WYOMING T22N, R22W

FIGURE 6. 2006 Ra226+Ra228
ACTIVITY IN SURFICIAL
AQUIFER MONITORING WELLS.

DRAWN BY: TGM DATE: 8-2006 Approx. Scale: 1"=700'
Semiannual-06-2nd.dwg HYDRO-ENGINEERING L.L.C.

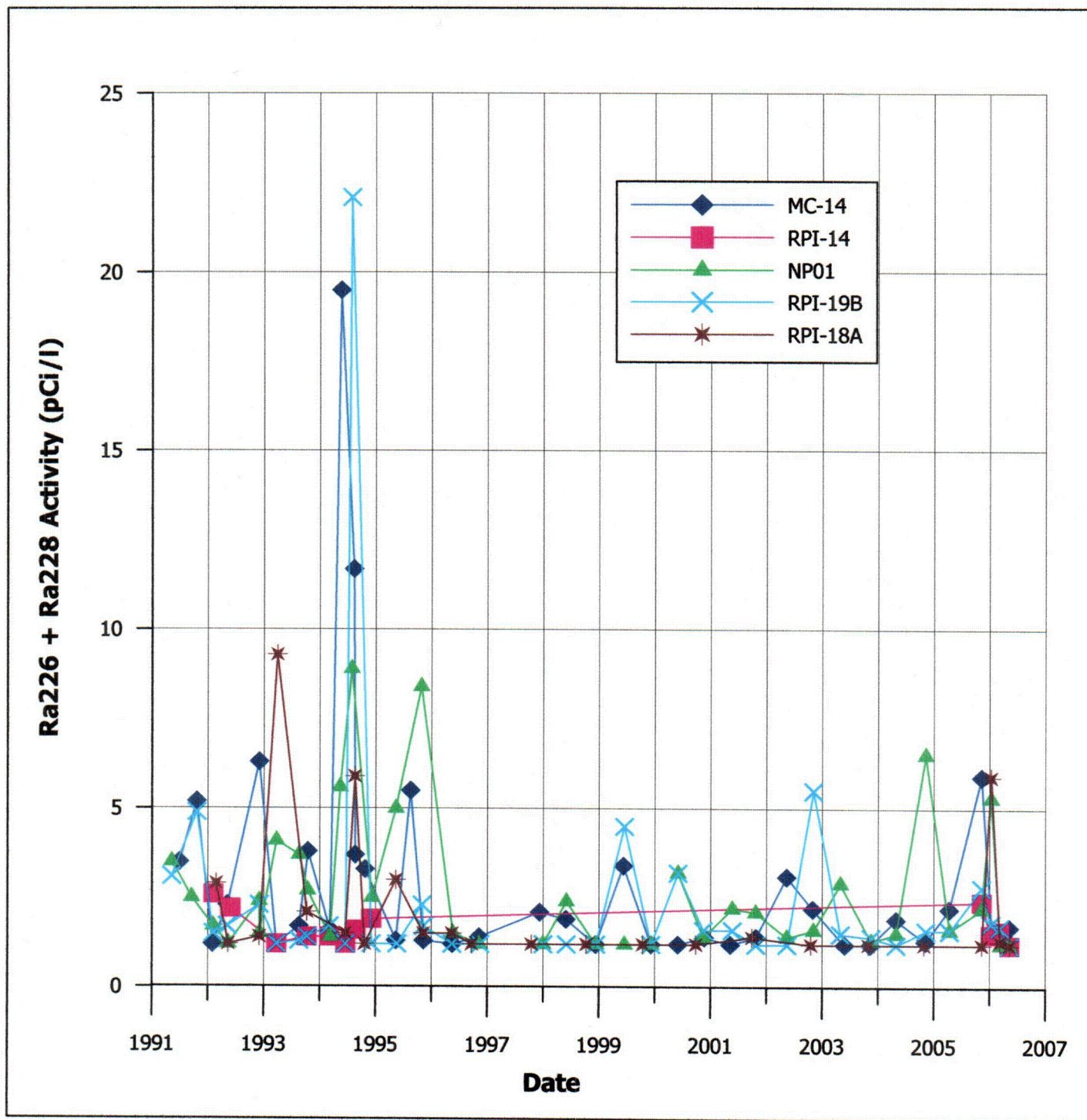


Figure 7. Ra226 + Ra228 Activity Versus Time For Wells MC-14, RPI-14, NP01, RPI-19B and RPI-18A

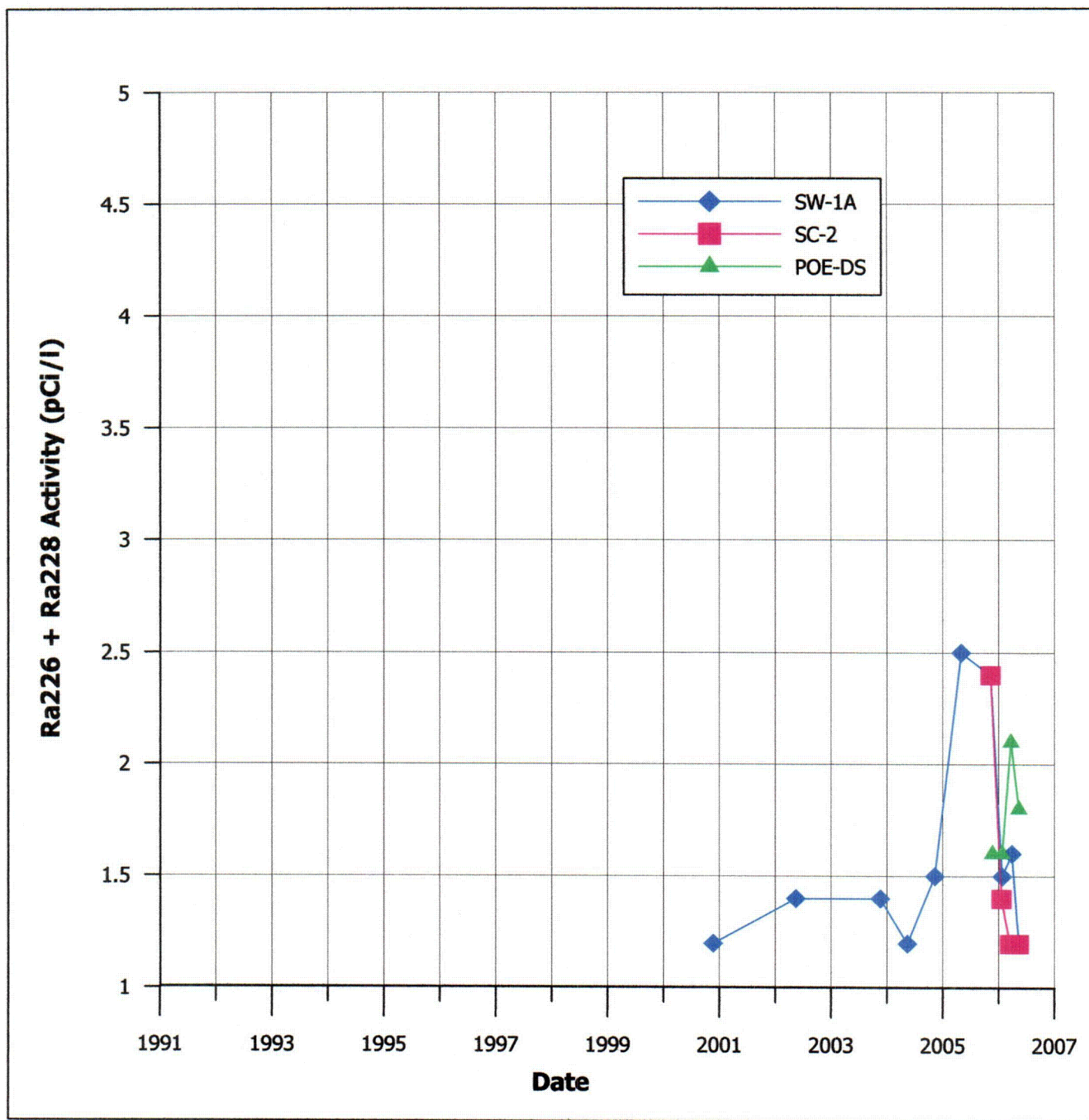
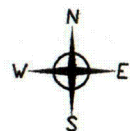
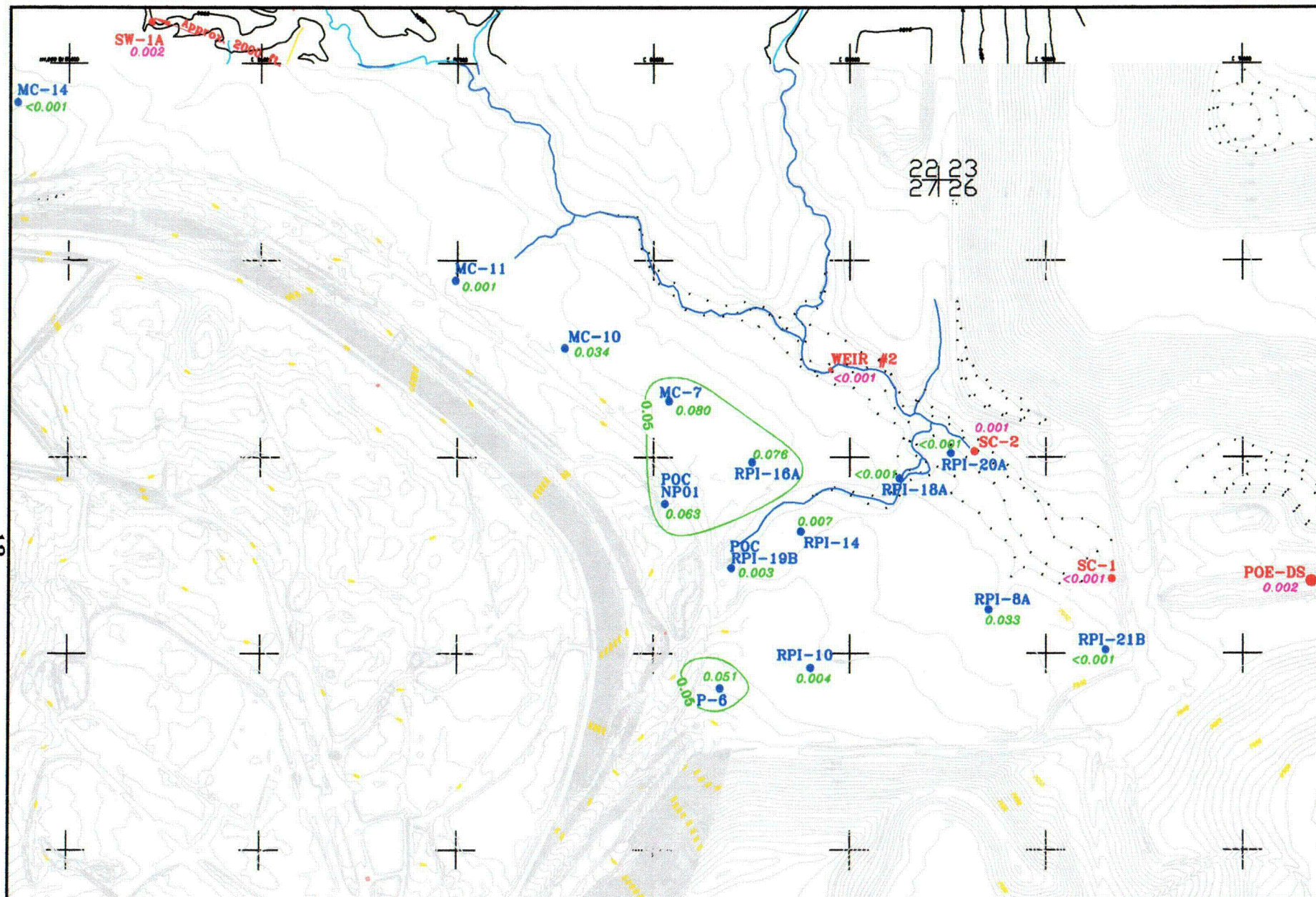


Figure 8. Ra226 + Ra228 Activity Versus Time For Surface Water Sample Locations SW-1A, SC-2 and POE-DS

12



LEGEND:

- <0.001 MONITORING WELL SELENIUM CONCENTRATION (mg/l)
- SELENIUM ISO-CONCENTRATION CONTOURS
- <0.001 SURFACE WATER SELENIUM CONCENTRATION (mg/l)

PATHFINDERPATHFINDER MINES CORPORATION
SHIRLEY BASIN, WYOMING

TRAN. R2&W

FIGURE 9. 2006 SELENIUM
CONCENTRATIONS IN SURFICIAL
AQUIFER MONITORING WELLS.DRAWN BY: TGM DATE: 8-2006 Approx. Scale: 1"=700'
Semiannual-06-2nd.dwg HYDRO-ENGINEERING L.L.C.

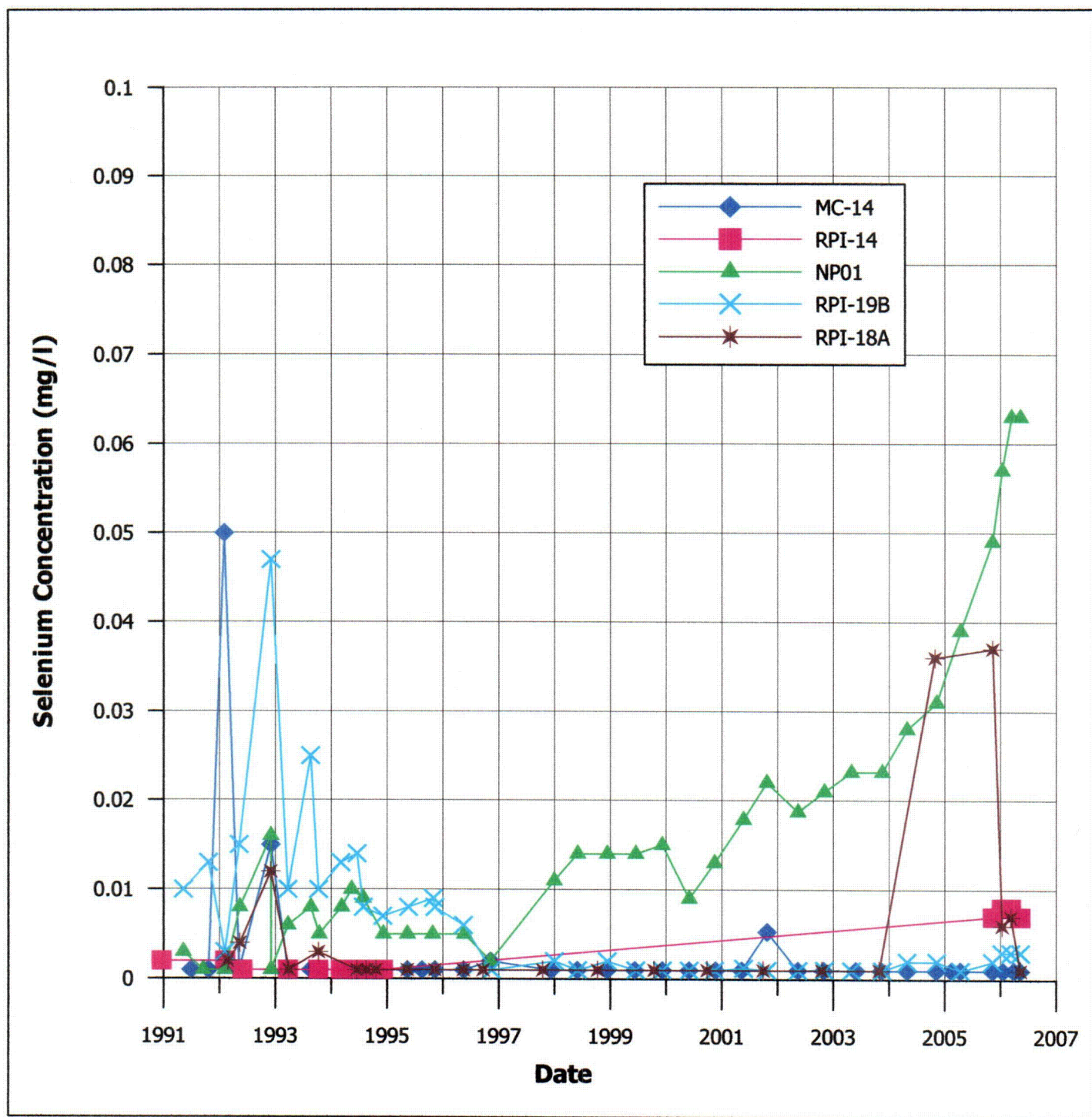


Figure 10. Selenium Concentration Versus Time For Wells MC-14, RPI-14, NP01, RPI-19B, and RPI-18A

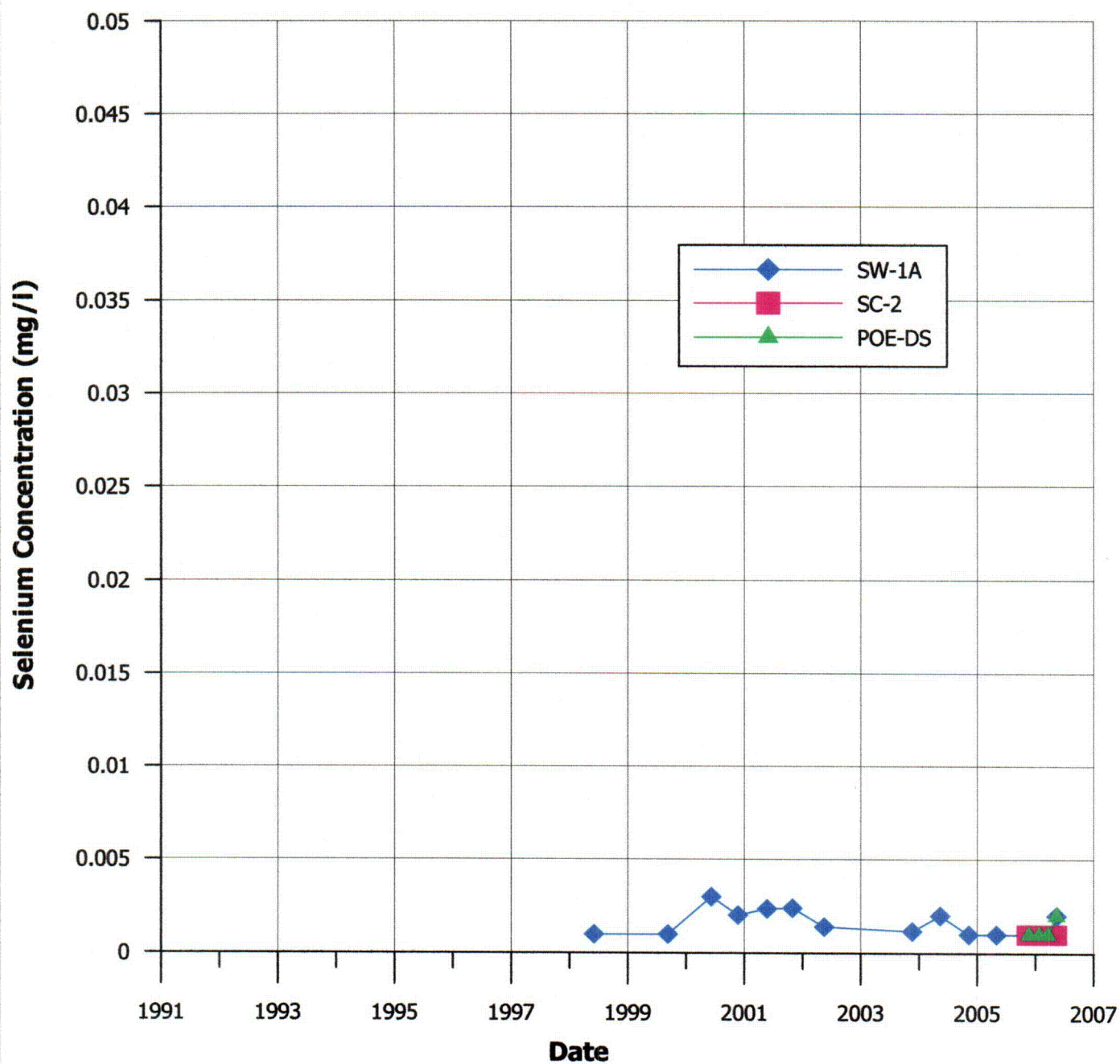
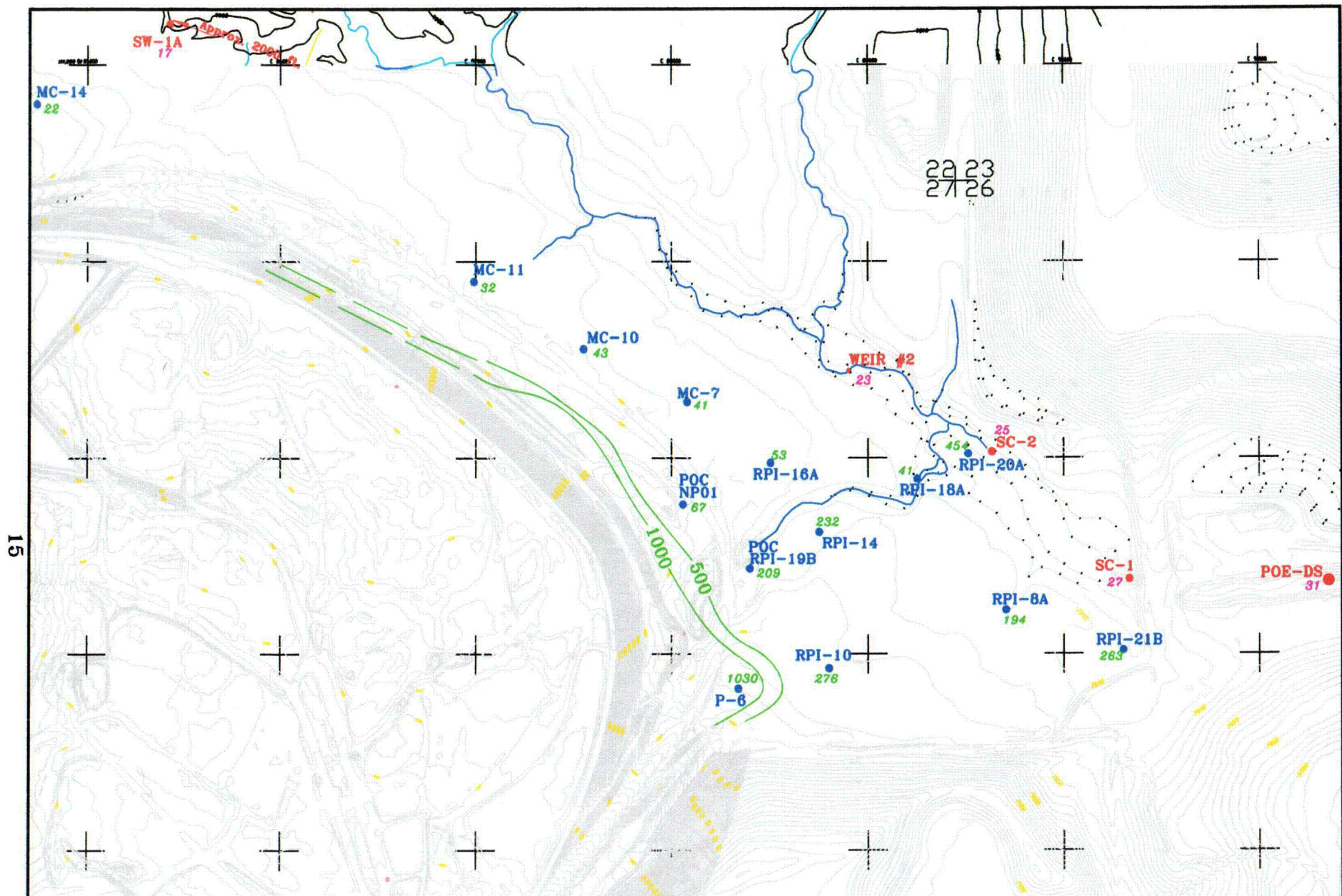


Figure 11. Selenium Concentration Versus Time For Surface Water Sample Locations SW-1A, SC-2, and POE-DS



LEGEND:

- 236 ● MONITORING WELL SULFATE CONCENTRATION (mg/l)
- Sulfate ISO-CONCENTRATION CONTOURS
- 20 ● SURFACE WATER SULFATE CONCENTRATION (mg/l)

PATHFINDER

PATHFINDER MINES CORPORATION
SHIRLEY BASIN, WYOMING

FIGURE 12. 2006 SULFATE
CONCENTRATIONS IN SURFICIAL
AQUIFER MONITORING WELLS.

DRAWN BY: TGM DATE: 8-2006 (Approx. Scale: 1"=700')
Semiannual-06-2nd.dwg HYDRO-ENGINEERING L.L.C.

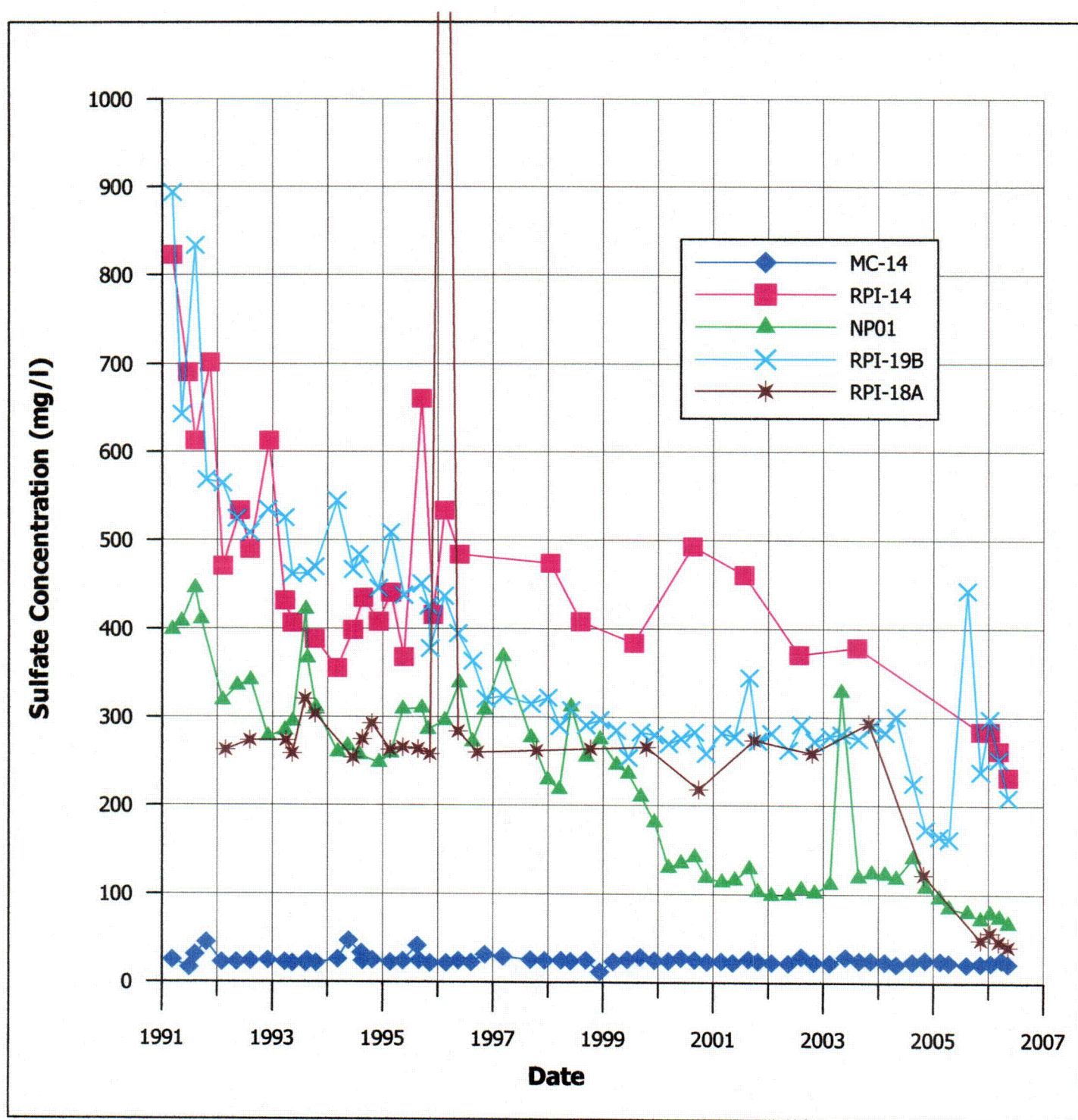


Figure 13. Sulfate Concentration Versus Time For Wells MC-14, RPI-14, NP01, RPI-19B and RPI-18A

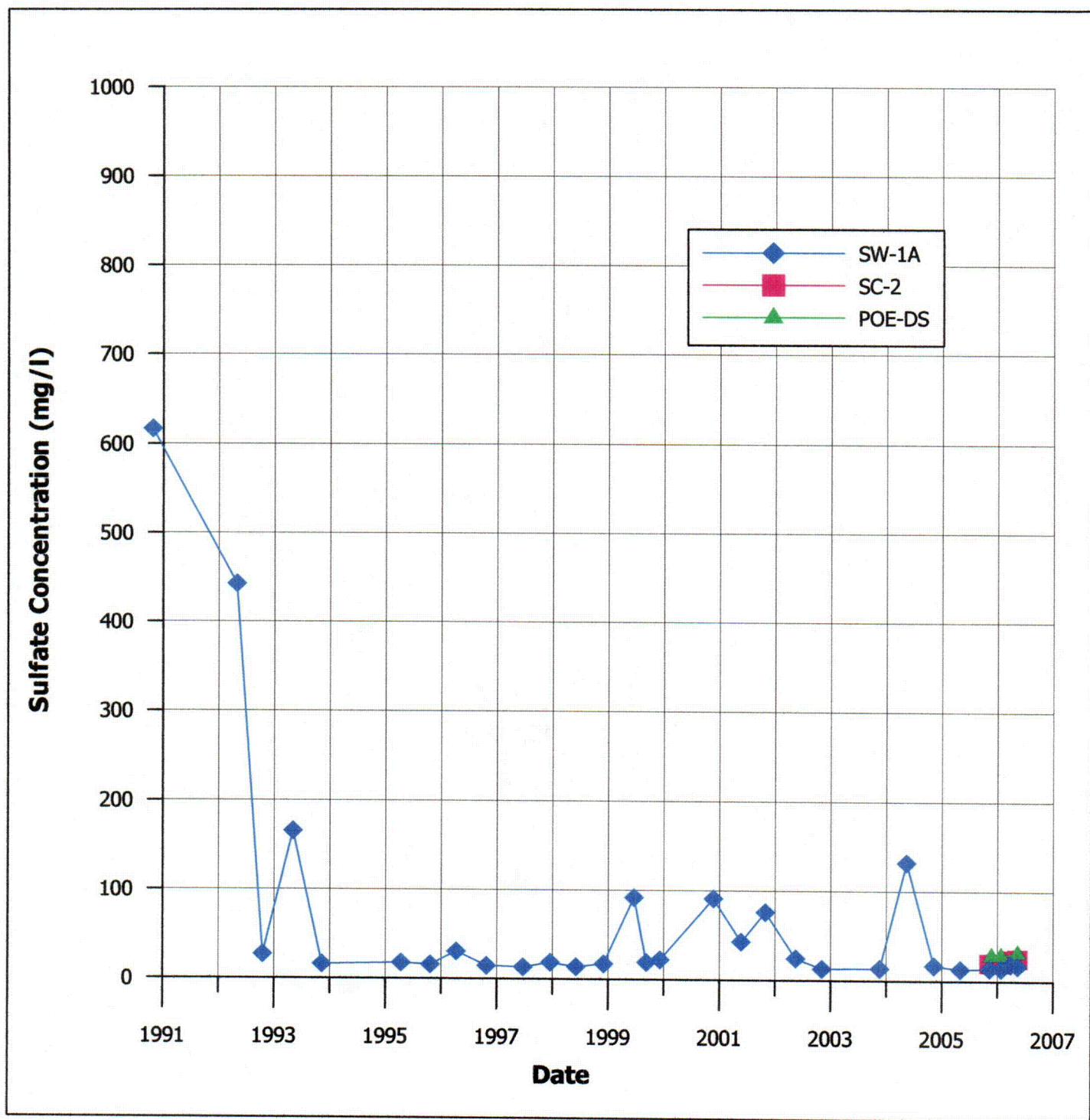
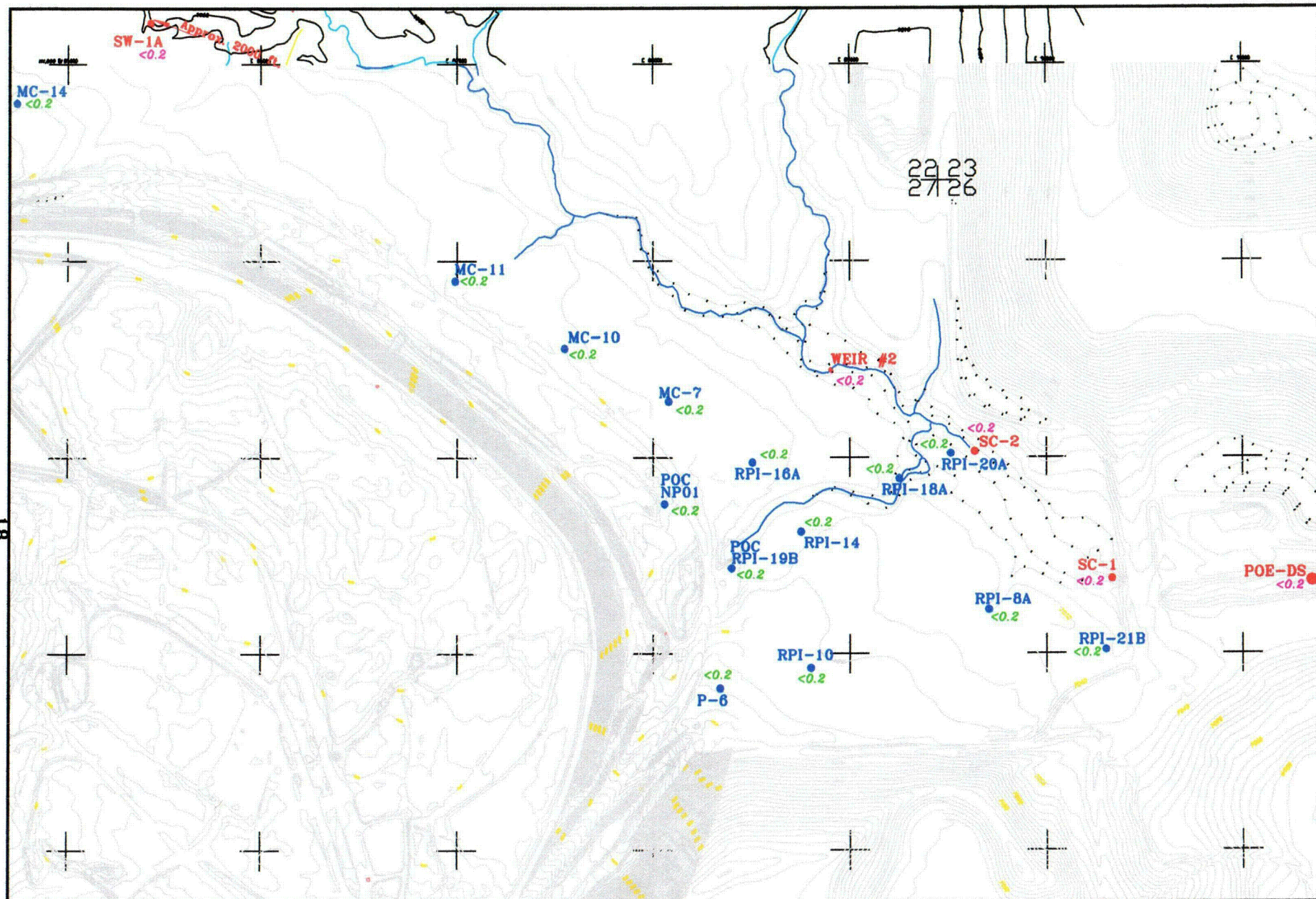


Figure 14. Sulfate Concentration Versus Time For Surface Water Sample Locations SW-1A, SC-2 and POE-DS



LEGEND:

- <0.2 MONITORING WELL THORIUM-230 ACTIVITY (pCi/l)
- <0.2 SURFACE WATER THORIUM-230 ACTIVITY (pCi/l)

PATHFINDER

PATHFINDER MINES CORPORATION
SHIRLEY BASIN, WYOMING T28N, R28W

FIGURE 15. 2006 THORIUM-230
ACTIVITY IN SURFICIAL
AQUIFER MONITORING WELLS.

DRAWN BY: TGM DATE: 8-2006 Approx. Scale: 1"=700'
Semiannual-06-2nd.dwg HYDRO-ENGINEERING L.L.C.

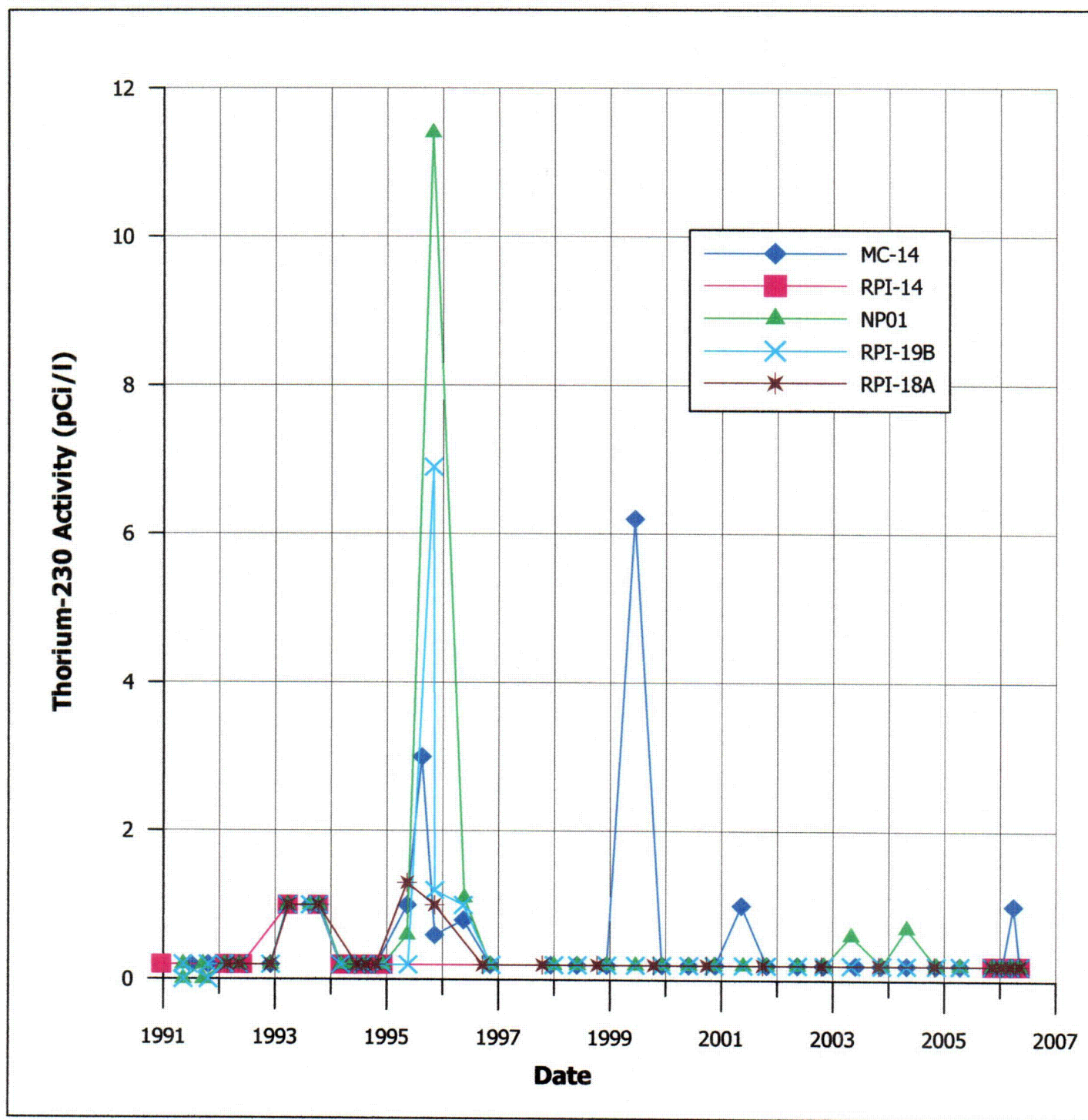


Figure 16. Thorium-230 Activity Versus Time For Wells MC-14, RPI-14, NP01, RPI-19B and RPI-18A

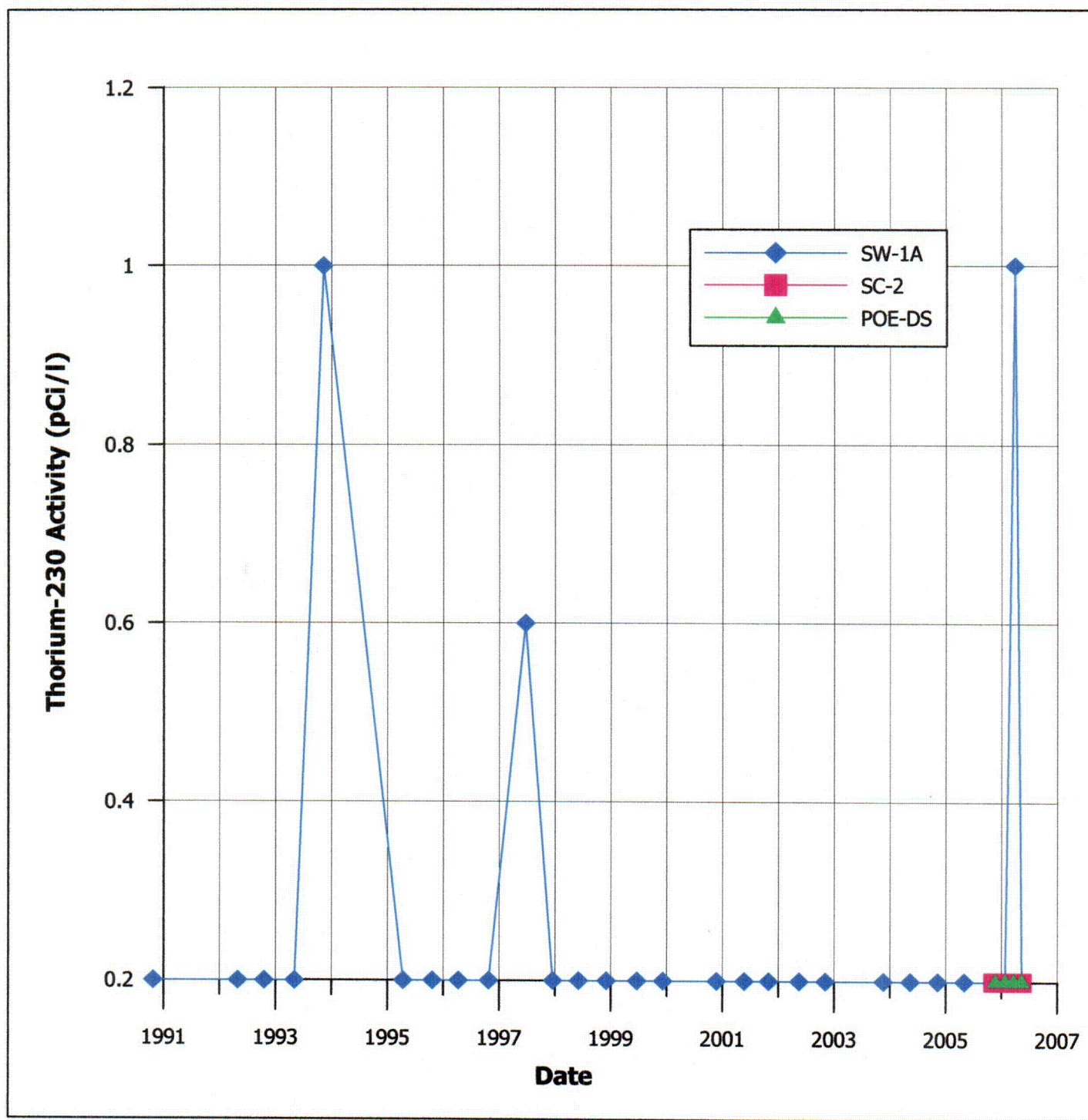
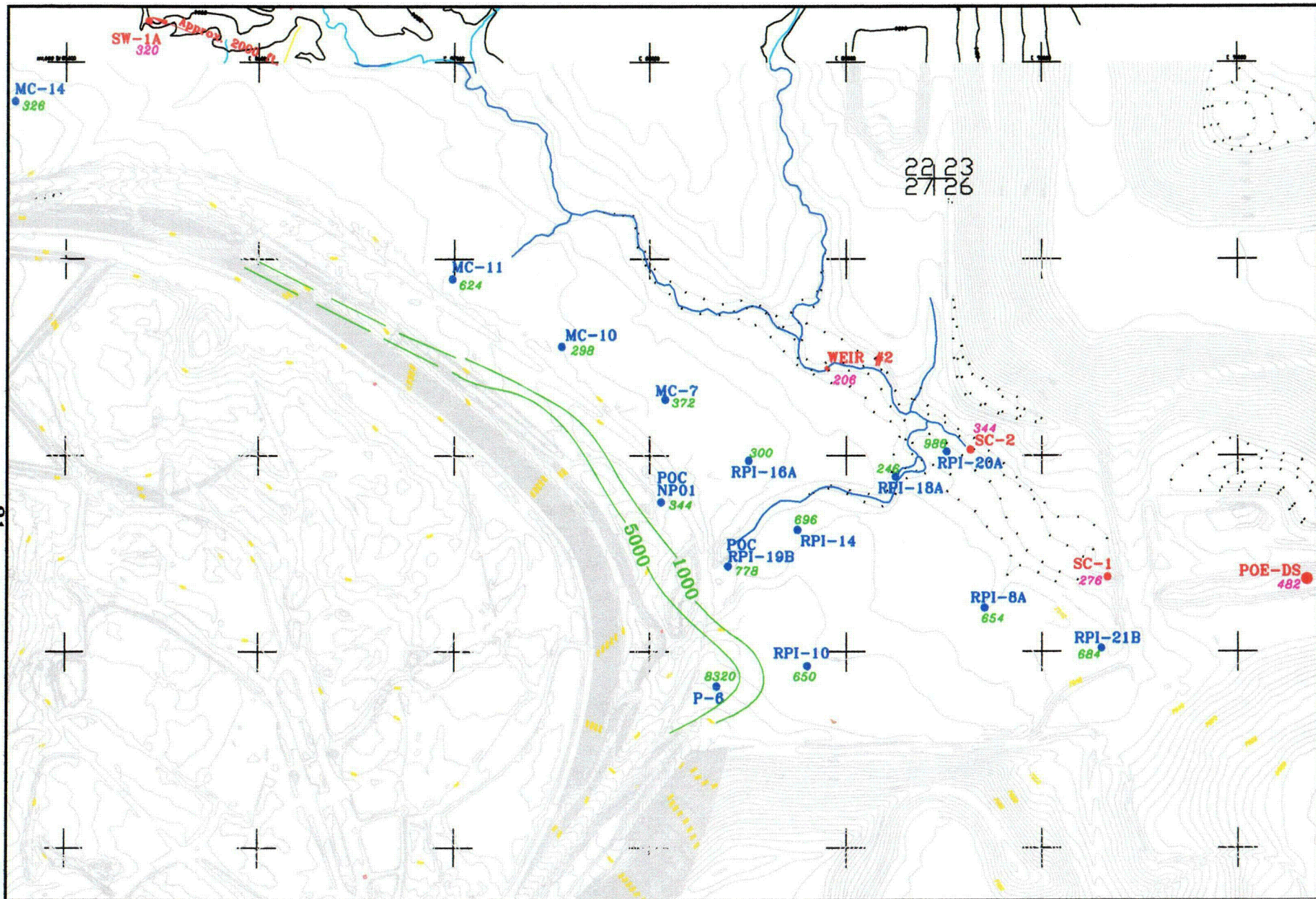


Figure 17. Thorium-230 Activity Versus Time For Surface Water Sample Locations SW-1A, SC-2 and POE-DS

21



LEGEND:

- 656 ● MONITORING WELL TDS CONCENTRATION (mg/l)
- TDS ISO-CONCENTRATION CONTOURS
- 276 ● SURFACE WATER TDS CONCENTRATION (mg/l)

PATHFINDER

PATHFINDER MINES CORPORATION
SHIRLEY BASIN, WYOMING T28N, R28W

FIGURE 18. 2006 TDS
CONCENTRATIONS IN SURFICIAL
AQUIFER MONITORING WELLS.

DRAWN BY: TGM DATE: 8-2006 Approx. Scale: 1"=700'
Semiannual-06-2nd.dwg HYDRO-ENGINEERING L.L.C.

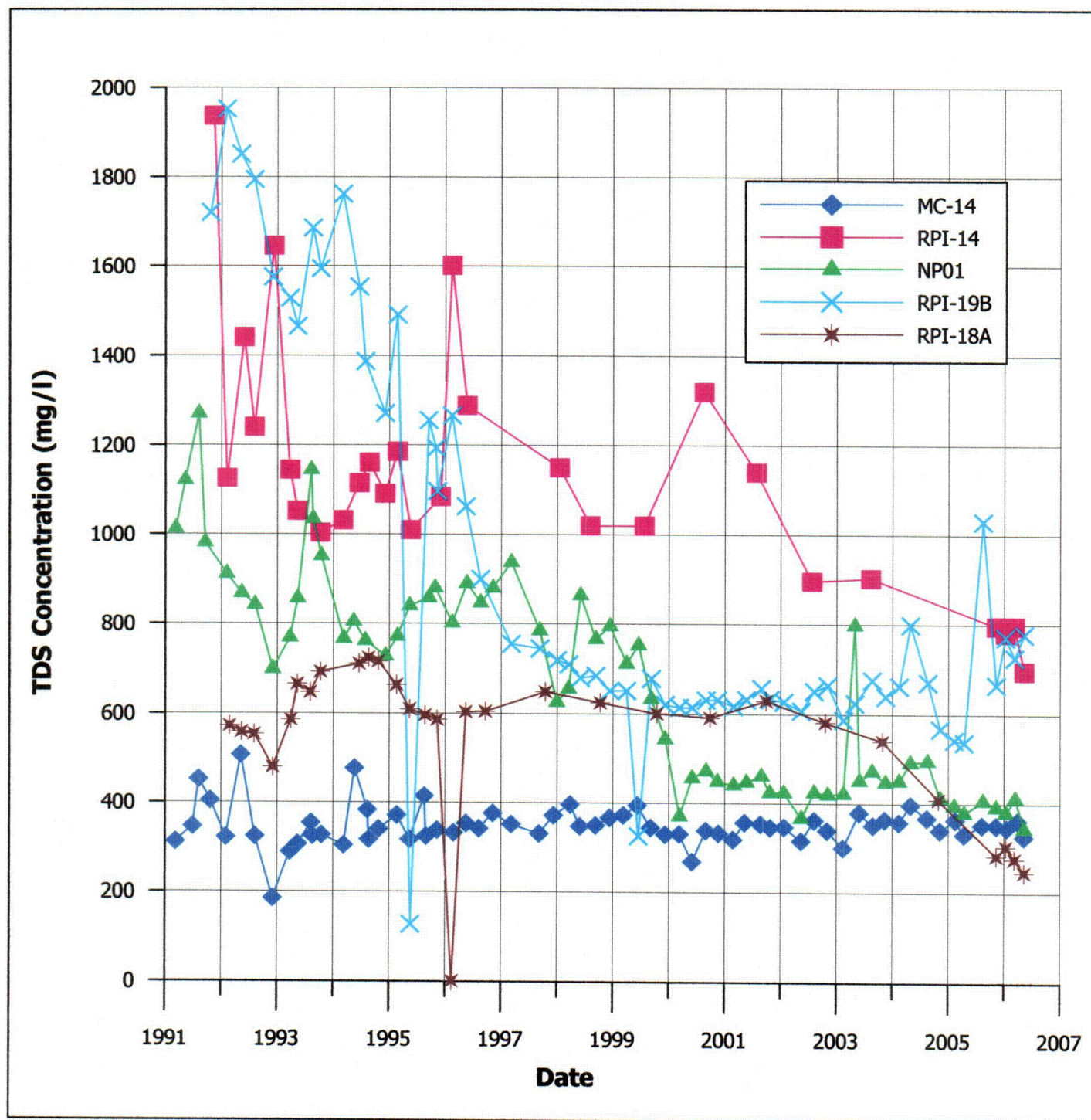


Figure 19. TDS Concentration Versus Time For Wells MC-14, RPI-14, NP01, RPI-19B and RPI-18A

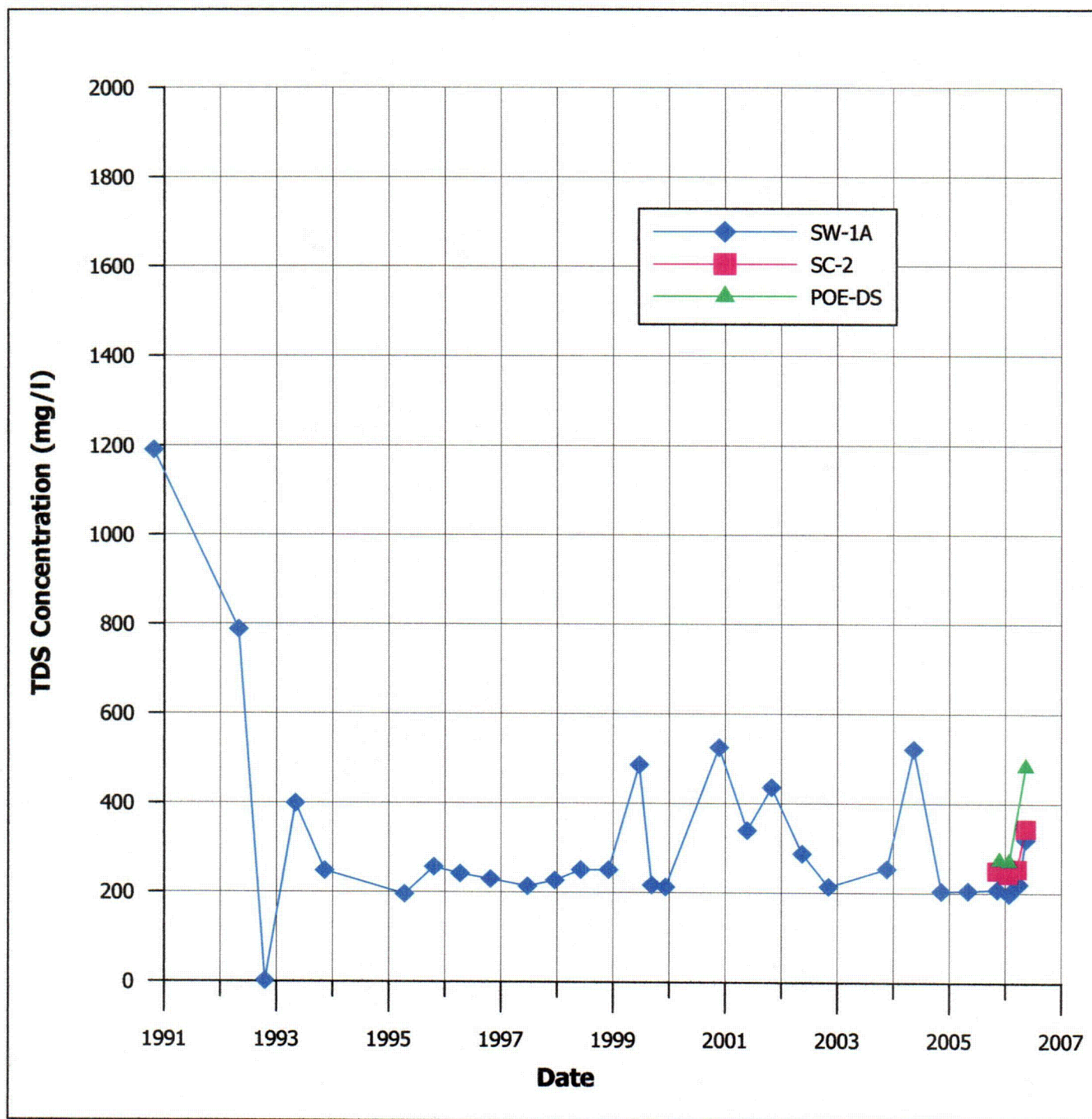
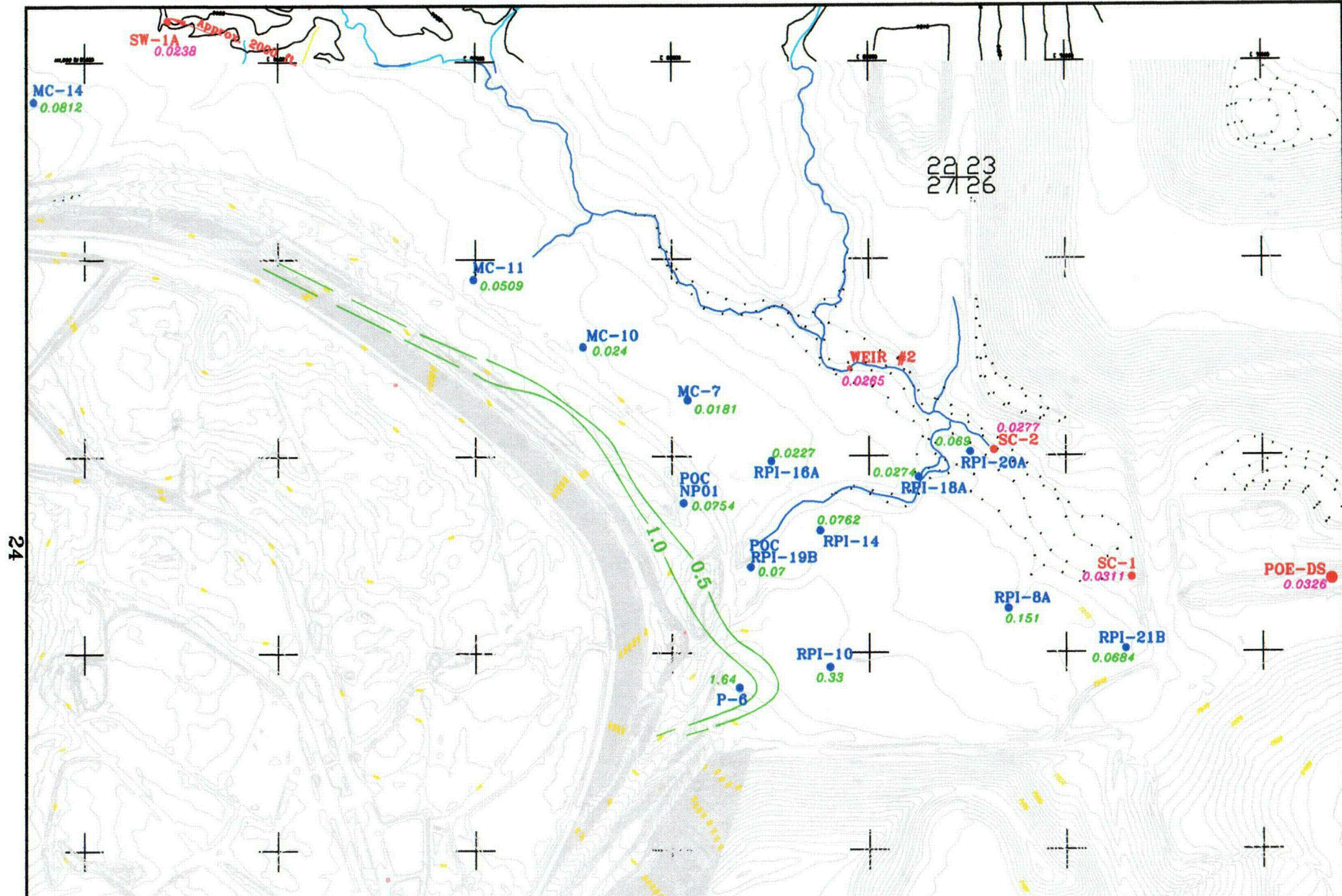
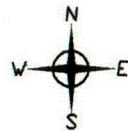


Figure 20. TDS Concentration Versus Time For Surface Water Sample Locations SW-1A, SC-2 and POE-DS



24

22 23
27 26



LEGEND:

- 0.0146 ● MONITORING WELL URANIUM CONCENTRATION (mg/l)
- 0.0238 ● SURFACE WATER URANIUM CONCENTRATION (mg/l)
- URANIUM ISO-CONCENTRATION CONTOURS

PATHFINDER

PATHFINDER MINES CORPORATION
SHIRLEY BASIN, WYOMING T28N, R28W

FIGURE 21. 2006 URANIUM CONCENTRATIONS IN SURFICIAL AQUIFER MONITORING WELLS.

DRAWN BY: TGM DATE: 8-2006 (Approx. Scale: 1"=700')
Semiannual-06-2nd.dwg HYDRO-ENGINEERING L.L.C.

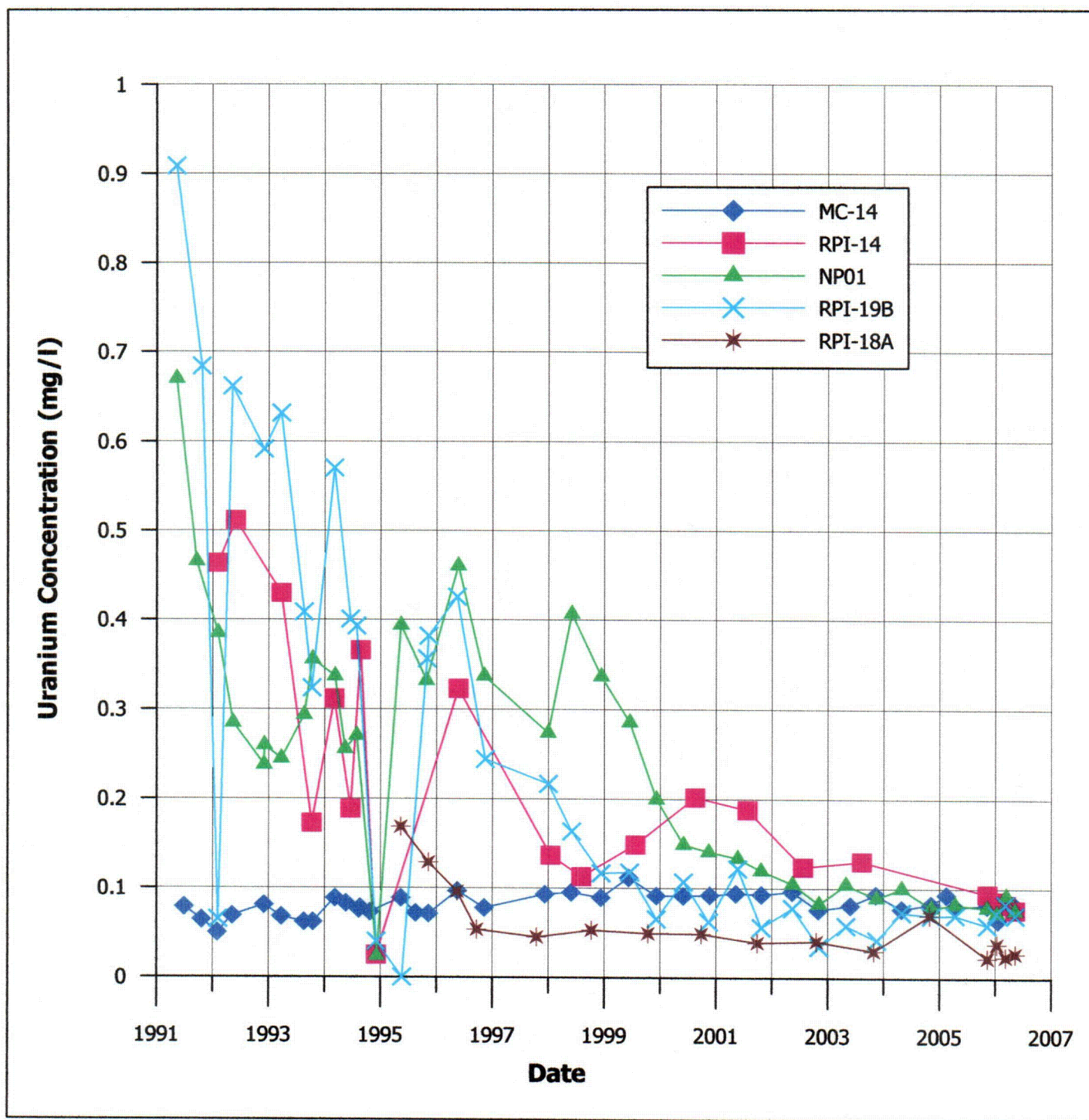


Figure 22. Uranium Concentration Versus Time For Wells MC-14, RPI-14, NP01, RPI-19B and RPI-18A

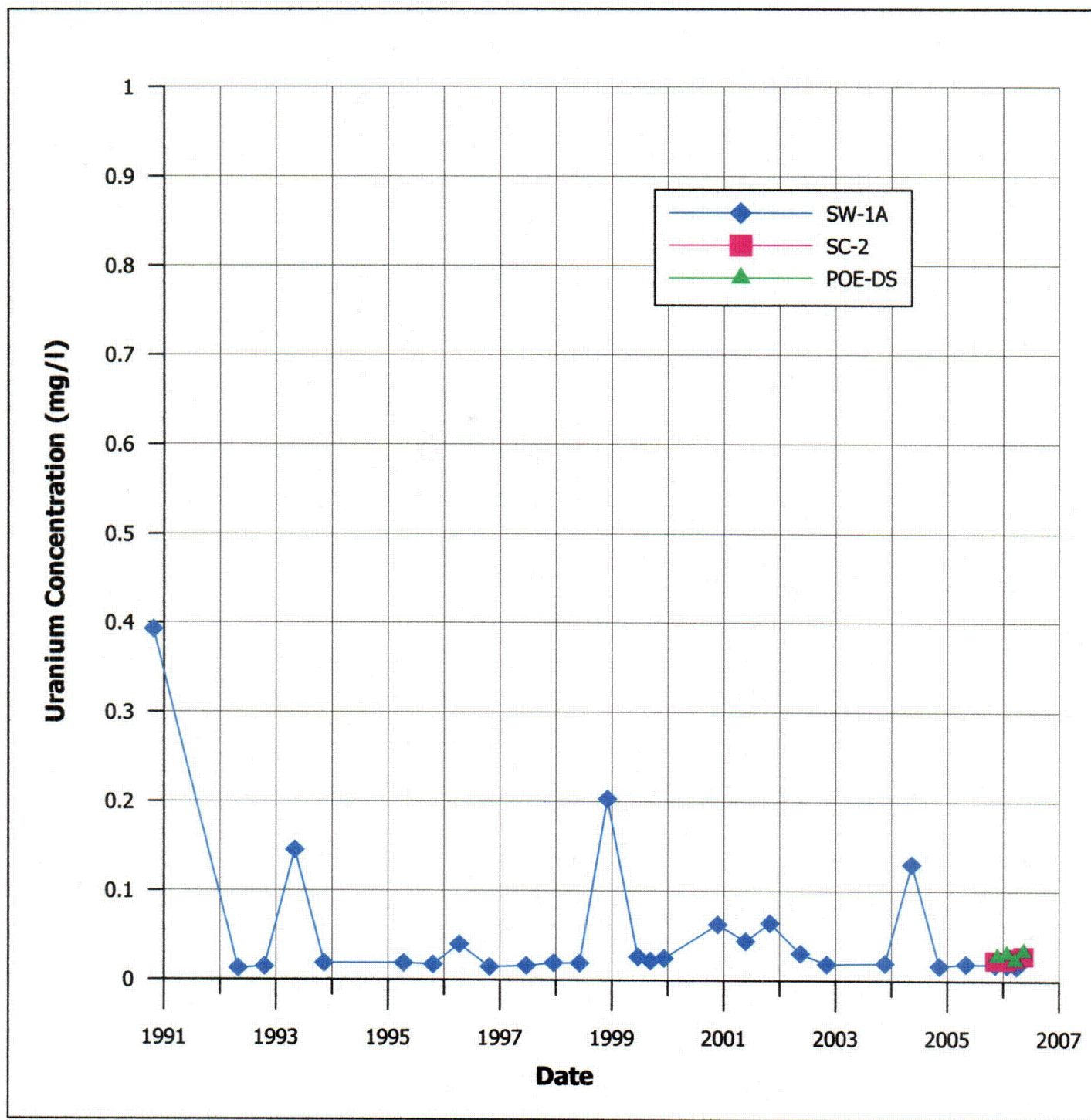


Figure 23. Uranium Concentration Versus Time For Surface Water Sample Locations SW-1A, SC-2 and POE-DS

TABLE 2. MONITOR WELL WATER-LEVEL AND WATER-QUALITY DATA

Sample Point Name	Date	WL (feet)	WL_ELEV (ft-msl)	pH(f) (std. units)	Cond(f) (µmhos)	TDS (mg/l)	SO4 (mg/l)	Cl (mg/l)	Unat (mg/l)	Se (mg/l)
MC07	2/10/2004	12.25	7037.36	7.60	547	374	84.5	14.7	—	—
	4/26/2004	11.72	7037.89	7.50	535	349	50.9	14.9	0.0140	0.044
	8/12/2004	11.92	7037.69	7.90	448	323	51.0	14.0	—	—
	11/4/2004	12.10	7037.51	7.80	441	316	48.0	14.0	0.0112	0.056
	2/3/2005	12.71	7036.90	7.85	446	323	42.0	14.0	—	—
	4/11/2005	12.52	7037.09	7.35	419	262	38.0	13.0	0.0141	0.070
	8/8/2005	12.17	7037.44	7.00	426	279	39.0	13.0	—	—
	11/7/2005	12.80	7036.81	7.57	471	310	37.0	12.0	0.0178	0.079
	1/16/2006	12.85	7036.76	6.85	529	272	40.0	13.0	0.0185	0.083
	3/27/2006	13.64	7035.97	7.41	702	284	43.0	18.0	0.0206	0.083
MC10	5/9/2006	13.00	7036.61	7.77	493	372	41.0	12.0	0.0181	0.080
	6/10/2004	11.15	7041.45	8.10	505	310	41.3	20.7	0.0370	—
	11/21/2005	14.73	7037.87	7.92	518	344	42.0	15.0	0.0303	0.035
	1/16/2006	14.75	7037.85	7.07	654	316	44.0	18.0	0.0247	0.035
	3/27/2006	15.23	7037.37	8.10	556	316	46.0	20.0	0.0254	0.036
MC11	5/9/2006	14.34	7038.26	8.37	560	298	43.0	24.0	0.0240	0.034
	2/11/2004	12.97	7043.54	7.10	966	599	27.2	200.8	—	—
	4/27/2004	12.49	7044.02	7.45	990	657	35.2	123.0	0.0510	0.003
	8/13/2004	12.24	7044.27	8.00	1081	647	35.0	207.0	—	—
	11/4/2004	12.99	7043.52	7.45	950	607	32.0	213.0	0.0480	0.002
	2/3/2005	13.91	7042.60	7.60	1049	675	32.0	226.0	—	—
	4/11/2005	13.63	7042.88	6.85	1023	581	26.0	216.0	0.0483	0.001
	8/9/2005	13.02	7043.49	7.20	1096	613	26.0	218.0	—	—
	11/8/2005	13.68	7042.83	6.61	1131	627	24.0	211.0	0.0464	< 0.001
	1/16/2006	13.61	7042.90	6.37	1439	604	24.0	228.0	0.0441	0.001
MC14	3/27/2006	14.02	7042.49	7.67	1184	614	27.0	222.0	0.0442	< 0.001
	5/9/2006	13.23	7043.28	7.22	1276	624	32.0	239.0	0.0509	0.001
	2/11/2004	22.44	7062.27	7.20	529	358	24.1	10.5	—	—
	4/27/2004	22.27	7062.44	7.50	560	397	21.2	17.7	0.0770	< 0.001
	8/13/2004	22.98	7061.73	8.05	504	368	24.0	12.0	—	—
	11/5/2004	23.03	7061.68	7.20	528	340	26.0	15.0	0.0821	< 0.001
	2/14/2005	23.17	7061.54	7.10	530	364	25.0	13.0	0.0931	0.001
	4/11/2005	23.35	7061.36	7.10	530	331	23.0	17.0	0.0797	< 0.001
	8/9/2005	23.36	7061.35	7.35	570	352	21.0	16.0	—	—
	11/8/2005	23.37	7061.34	6.58	610	351	22.0	16.0	0.0812	< 0.001
	1/16/2006	23.45	7061.26	6.80	798	346	23.0	20.0	0.0647	< 0.001
	3/27/2006	23.73	7060.98	7.80	610	362	26.0	24.0	0.0797	< 0.001
	5/9/2006	23.15	7061.56	7.89	616	326	22.0	27.0	0.0812	< 0.001

TABLE 2. MONITOR WELL WATER-LEVEL AND WATER-QUALITY DATA

Sample Point Name	Date	WL (feet)	WL_ELEV (ft-msl)	pH(f) (std. units)	Cond(f) (µmhos)	TDS (mg/l)	SO4 (mg/l)	Cl (mg/l)	Unat (mg/l)	Se (mg/l)
NP01	1/2/2004	13.98	7037.83	—	—	—	—	—	—	—
	2/2/2004	14.08	7037.73	—	—	—	—	—	—	—
	2/12/2004	14.11	7037.70	7.30	659	450	122.6	25.6	—	—
	3/4/2004	14.00	7037.81	—	—	—	—	—	—	—
	4/1/2004	13.54	7038.27	—	—	—	—	—	—	—
	4/28/2004	13.51	7038.30	8.00	677	492	118.0	38.6	0.1000	0.028
	5/3/2004	13.51	7038.30	—	—	—	—	—	—	—
	6/7/2004	13.65	7038.16	—	—	—	—	—	—	—
	7/6/2004	13.55	7038.26	—	—	—	—	—	—	—
	8/2/2004	13.58	7038.23	—	—	—	—	—	—	—
	8/18/2004	13.58	7038.23	7.70	649	495	141.0	24.0	—	—
	9/10/2004	13.60	7038.21	—	—	—	—	—	—	—
	10/1/2004	14.02	7037.79	—	—	—	—	—	—	—
	11/1/2004	14.15	7037.66	—	—	—	—	—	—	—
	11/8/2004	14.05	7037.76	7.30	578	411	108.0	19.0	0.0784	0.031
	12/1/2004	14.38	7037.43	—	—	—	—	—	—	—
	2/7/2005	14.45	7037.36	7.10	653	395	96.0	35.0	—	—
	4/14/2005	15.69	7036.12	7.20	575	379	85.0	28.0	0.0818	0.039
	8/15/2005	26.90	7024.91	7.45	636	406	80.0	16.0	—	—
	11/8/2005	14.38	7037.43	6.75	658	392	72.0	25.0	0.0783	0.049
	1/11/2006	14.41	7037.40	7.05	571	380	79.0	19.0	0.0723	0.057
P-6	3/14/2006	14.56	7037.25	8.10	655	412	74.0	34.0	0.0920	0.063
	5/10/2006	13.30	7038.51	7.69	704	344	67.0	29.0	0.0754	0.063
	10/20/2004	27.72	7030.48	6.40	2110	2000	337.0	424.0	0.5520	0.092
	11/10/2005	24.21	7033.99	4.76	3800	2770	577.0	689.0	0.9330	0.073
	1/11/2006	23.81	7034.39	5.98	4200	3280	600.0	970.0	0.8790	0.068
RPI-8A	3/14/2006	23.90	7034.30	6.88	5700	4280	703.0	1190.0	1.3100	0.074
	5/10/2006	22.25	7035.95	6.57	8810	8320	1030.0	2320.0	1.6400	0.051
	6/28/2004	8.81	7030.59	7.70	906	692	326.0	13.0	0.1030	< 0.001
	11/10/2005	11.39	7028.01	6.72	893	580	198.0	15.0	0.1190	0.029
	1/10/2006	11.02	7028.38	6.46	856	566	206.0	15.0	0.1490	0.035
RPI-10	3/8/2006	11.11	7028.29	7.12	923	590	183.0	16.0	0.1300	0.033
	5/10/2006	10.89	7028.51	7.86	932	654	194.0	19.0	0.1510	0.033
	2/11/2004	14.29	7035.12	7.00	869	682	292.3	10.9	—	—
	8/19/2004	15.37	7034.04	7.65	828	656	295.0	11.0	—	—
	2/7/2005	16.62	7032.79	6.90	844	638	305.0	11.0	—	—
	11/10/2005	16.80	7032.61	8.26	889	638	283.0	11.0	0.2980	0.003
	1/9/2006	11.73	7037.68	6.02	1178	794	284.0	7.0	0.3160	0.003
	3/8/2006	16.78	7032.63	7.36	909	668	276.0	11.0	0.2920	0.004

TABLE 2. MONITOR WELL WATER-LEVEL AND WATER-QUALITY DATA

Sample Point Name	Date	WL (feet)	WL_ELEV (ft-msl)	pH(f) (std. units)	Cond(f) (µmhos)	TDS (mg/l)	SO4 (mg/l)	Cl (mg/l)	Unat (mg/l)	Se (mg/l)
RPI-10	5/10/2006	16.13	7033.28	7.49	934	650	276.0	12.0	0.3300	0.004
RPI-14	11/10/2005	8.21	7033.69	6.38	1327	796	284.0	34.0	0.0940	0.007
	1/9/2006	8.16	7033.74	6.73	888	780	284.0	31.0	0.0861	0.008
	3/8/2006	7.85	7034.05	7.54	1128	796	262.0	30.0	0.0822	0.008
	5/11/2006	7.75	7034.15	7.58	1294	696	232.0	28.0	0.0762	0.007
RPI-16A	10/28/2004	10.71	7036.89	7.20	527	362	66.0	34.0	0.0203	0.049
	11/10/2005	11.21	7036.39	6.82	608	381	71.0	19.0	0.0228	0.056
	1/12/2006	11.51	7036.09	6.69	567	396	73.0	33.0	0.0215	0.065
	3/9/2006	11.80	7035.80	7.23	555	352	62.0	15.0	0.0224	0.073
	5/11/2006	11.14	7036.46	7.89	570	300	53.0	16.0	0.0227	0.076
RPI-18A	10/28/2004	2.66	7029.19	7.65	577	409	122.0	16.0	0.0696	0.036
	11/10/2005	7.14	7024.71	6.29	320	283	49.0	11.0	0.0222	0.037
	1/12/2006	4.69	7027.16	6.35	428	304	57.0	30.0	0.0376	0.006
	3/9/2006	3.68	7028.17	7.10	448	276	47.0	10.0	0.0236	0.007
	5/11/2006	4.06	7027.79	7.57	453	246	41.0	10.0	0.0274	< 0.001
RPI-19B	2/13/2004	10.81	7036.00	7.85	947	663	282.9	10.4	—	—
	4/28/2004	10.84	7035.97	7.50	1063	799	301.0	10.8	0.0730	0.002
	8/19/2004	11.13	7035.68	7.80	901	671	225.0	16.0	—	—
	11/8/2004	11.49	7035.32	7.65	793	568	173.0	21.0	0.0693	0.002
	2/8/2005	11.84	7034.97	7.10	854	543	165.0	17.0	—	—
	4/14/2005	11.85	7034.96	7.10	800	538	162.0	15.0	0.0700	0.001
	8/15/2005	12.15	7034.66	7.35	1444	1030	443.0	12.0	—	—
	11/9/2005	12.13	7034.68	6.37	1018	666	238.0	21.0	0.0588	0.002
	1/9/2006	11.57	7035.24	6.93	1153	772	298.0	22.0	0.0720	0.003
	3/9/2006	11.03	7035.78	7.53	1179	726	252.0	22.0	0.0826	0.003
	5/11/2006	10.29	7036.52	7.57	925	778	209.0	21.0	0.0700	0.003
RPI-20A	2/13/2004	5.48	7026.13	—	—	—	—	—	—	—
	4/28/2004	5.25	7026.36	7.30	1022	753	260.0	21.9	0.0190	0.001
	8/19/2004	5.86	7025.75	6.95	691	498	154.0	21.0	—	—
	11/8/2004	5.58	7026.03	7.50	718	515	185.0	25.0	0.0059	0.001
	2/8/2005	5.89	7025.72	7.15	822	536	168.0	22.0	—	—
	4/20/2005	5.85	7025.76	6.85	674	425	100.0	19.0	0.0118	< 0.001
	8/15/2005	7.00	7024.61	7.28	837	560	151.0	38.0	—	—
	11/9/2005	5.74	7025.87	6.46	1856	1390	763.0	28.0	0.0146	< 0.001
	1/10/2006	6.60	7025.01	6.03	1440	1060	539.0	26.0	0.0182	0.001
	3/9/2006	6.54	7025.07	7.52	1439	1040	481.0	26.0	0.0192	0.001
	5/11/2006	6.13	7025.48	7.31	1484	986	454.0	21.0	0.0690	< 0.001
RPI-21B	2/13/2004	7.44	7029.20	7.90	889	652	377.2	9.8	—	—

TABLE 2. MONITOR WELL WATER-LEVEL AND WATER-QUALITY DATA

Sample Point Name	Date	WL (feet)	WL_ELEV (ft-msl)	pH(f) (std. units)	Cond(f) (µmhos)	TDS (mg/l)	SO4 (mg/l)	Cl (mg/l)	Unat (mg/l)	Se (mg/l)
RPI-21B	4/28/2004	7.72	7028.92	7.45	855	673	279.0	10.1	0.0810	0.001
	8/19/2004	8.57	7028.07	7.95	841	640	284.0	10.0	—	—
	11/8/2004	9.13	7027.51	7.65	818	631	284.0	11.0	0.0648	0.003
	2/8/2005	9.85	7026.79	7.25	904	624	288.0	11.0	—	—
	4/20/2005	9.80	7026.84	7.25	910	608	280.0	12.0	0.0671	0.002
	8/15/2005	11.15	7025.49	6.85	907	652	270.0	723.0	—	—
	11/9/2005	11.18	7025.46	6.51	954	647	274.0	11.0	0.0679	0.002
	1/10/2006	11.44	7025.20	6.17	933	624	285.0	10.0	0.0763	0.002
	3/14/2006	11.79	7024.85	7.39	998	634	261.0	13.0	0.0916	0.002
	5/11/2006	11.38	7025.26	7.77	960	684	263.0	13.0	0.0684	< 0.001

TABLE 2. MONITOR WELL WATER-LEVEL AND WATER-QUALITY DATA (cont'd.)

Sample Point Name	Date	Th230 (pCi/l)	Th230(e) (pCi/l)	Ra226 (pCi/l)	Ra226(e) (pCi/l)	Ra228 (pCi/l)	Ra228(e) (pCi/l)	Ra226+228 (pCi/l)	Alpha (pCi/l)
MC07	4/26/2004	< 0.2	—	< 0.2	—	< 1.0	—	< 1.2	< 1.0
	11/4/2004	< 0.2	—	< 0.2	—	< 1.0	—	< 1.2	1.5
	4/11/2005	< 0.2	—	0.4	± 0.3	< 1.0	—	< 1.4	1.1
	11/7/2005	< 0.2	—	1.5	± 0.6	< 1.0	—	< 2.5	1.1
	1/16/2006	< 0.2	—	0.4	± 0.3	< 1.0	—	< 1.4	< 1.0
	3/27/2006	< 1.0	—	0.7	± 0.4	< 1.0	—	< 1.7	< 1.0
	5/9/2006	< 0.2	—	< 0.2	± 0.2	< 1.0	—	< 1.2	< 1.0
MC10	11/21/2005	< 0.2	—	0.8	± 0.4	< 1.0	—	< 1.8	1.8
	1/16/2006	< 0.2	—	< 0.2	—	< 1.0	—	< 1.2	< 1.0
	3/27/2006	< 1.0	—	< 0.2	± 0.2	< 1.0	—	< 1.2	< 1.0
	5/9/2006	< 0.2	—	< 0.2	± 0.2	< 1.0	—	< 1.2	< 1.0
MC11	4/27/2004	0.6	± 0.3	2.8	± 0.8	2.3	± 1.2	5.1	4.0
	11/4/2004	< 0.2	—	2.4	± 0.5	< 1.0	—	< 3.4	3.0
	4/11/2005	< 0.2	—	3.8	± 0.7	< 1.0	—	< 4.8	3.4
	11/8/2005	< 0.2	—	1.8	± 0.5	1.7	± 0.9	3.5	3.8
	1/16/2006	< 0.2	—	1.9	± 0.5	< 1.0	—	< 2.9	2.5
	3/27/2006	< 1.0	—	3.3	± 0.7	1.6	± 1.0	4.9	3.5
	5/9/2006	< 0.2	—	3.1	± 0.6	< 1.0	—	< 4.1	2.7
MC14	4/27/2004	< 0.2	—	0.9	± 0.4	< 1.0	—	< 1.9	1.0
	11/5/2004	< 0.2	—	0.3	± 0.3	< 1.0	—	< 1.3	< 1.0
	2/14/2005	—	—	0.9	± 0.2	—	—	—	—
	4/11/2005	< 0.2	—	1.2	± 0.4	< 1.0	—	< 2.2	1.9
	11/8/2005	< 0.2	—	4.9	± 0.8	< 1.0	—	< 5.9	1.7
	1/16/2006	< 0.2	—	0.6	± 0.3	< 1.0	—	< 1.6	1.0
	3/27/2006	< 1.0	—	0.5	± 0.3	< 1.0	—	< 1.5	1.0
	5/9/2006	< 0.2	—	0.7	± 0.3	< 1.0	—	< 1.7	< 1.0
NP01	4/28/2004	0.7	± 0.5	0.5	± 0.3	< 1.0	—	< 1.5	< 1.0
	11/8/2004	< 0.2	—	< 0.2	—	6.3	± 1.3	< 6.5	< 1.0
	4/14/2005	< 0.2	—	0.6	± 0.3	< 1.0	—	< 1.6	< 1.0
	11/8/2005	< 0.2	—	1.2	± 0.4	< 1.0	—	< 2.2	1.2
	1/11/2006	< 0.2	—	0.8	± 0.3	4.5	± 1.0	5.3	1.1
	3/14/2006	< 0.2	—	< 0.2	± 0.2	< 1.0	—	< 1.2	< 1.0
	5/10/2006	< 0.2	—	< 0.2	± 0.2	< 1.0	—	< 1.2	< 1.0
P-6	10/20/2004	< 0.2	—	0.8	± 0.4	< 1.0	—	< 1.8	1.2
	11/10/2005	< 0.2	—	2.5	± 0.5	4.1	± 1.0	6.6	2.2
	1/11/2006	< 0.2	—	2.6	± 0.6	5.1	± 1.0	7.7	1.8
	3/14/2006	< 0.2	—	1.5	± 0.5	2.1	± 0.8	3.6	2.5
	5/10/2006	< 0.2	—	1.6	± 0.4	< 1.0	—	< 2.6	1.9

TABLE 2. MONITOR WELL WATER-LEVEL AND WATER-QUALITY DATA (cont'd.)

Sample Point Name	Date	Th230 (pCi/l)	Th230(e) (pCi/l)	Ra226 (pCi/l)	Ra226(e) (pCi/l)	Ra228 (pCi/l)	Ra228(e) (pCi/l)	Ra226+228 (pCi/l)	Alpha (pCi/l)
RPI-8A	6/28/2004	< 0.2	—	0.4	± 0.3	< 1.0	—	< 1.4	—
	11/10/2005	< 0.2	—	0.8	± 0.4	< 1.0	—	< 1.8	< 1.0
	1/10/2006	< 0.2	—	0.7	± 0.4	1.2	± 0.9	1.9	< 1.0
	3/8/2006	< 0.2	—	< 0.2	± 0.2	< 1.0	—	< 1.2	1.0
	5/10/2006	< 0.2	—	< 0.2	± 0.2	< 1.0	—	< 1.2	< 1.0
RPI-10	11/10/2005	< 0.2	—	1.8	± 0.5	< 1.0	—	< 2.8	< 1.0
	1/9/2006	< 0.2	—	0.9	± 0.5	< 1.0	—	< 1.9	< 1.0
	3/8/2006	< 0.2	—	1.0	± 0.4	< 1.0	—	< 2.0	1.9
	5/10/2006	< 0.2	—	< 0.2	± 0.2	< 1.0	—	< 1.2	< 1.0
RPI-14	11/10/2005	< 0.2	—	0.7	± 0.3	1.7	± 0.9	2.4	< 1.0
	1/9/2006	< 0.2	—	0.5	± 0.3	< 1.0	—	< 1.5	< 1.0
	3/8/2006	< 0.2	—	0.6	± 0.4	< 1.0	—	< 1.6	1.2
	5/11/2006	< 0.2	—	< 0.2	± 0.2	< 1.0	—	< 1.2	< 1.0
RPI-16A	10/28/2004	< 0.2	—	< 0.2	± 1.0	1.6	—	< 1.8	< 1.0
	11/10/2005	< 0.2	—	0.5	± 0.3	< 1.0	—	< 1.5	< 1.0
	1/12/2006	0.2	—	0.6	± 0.3	4.1	± 1.0	4.7	< 1.0
	3/9/2006	< 0.2	—	< 0.2	± 0.2	< 1.0	—	< 1.2	1.1
	5/11/2006	< 0.2	—	< 0.2	± 0.2	< 1.0	—	< 1.2	< 1.0
RPI-18A	10/28/2004	< 0.2	—	< 0.2	—	< 1.0	—	< 1.2	< 1.0
	11/10/2005	< 0.2	—	< 0.2	—	< 1.0	—	< 1.2	< 1.0
	1/12/2006	< 0.2	—	0.5	± 0.3	5.4	± 1.0	5.9	< 1.0
	3/9/2006	< 0.2	—	0.3	± 0.3	< 1.0	—	< 1.3	1.3
	5/11/2006	< 0.2	—	< 0.2	± 0.2	< 1.0	—	< 1.2	< 1.0
RPI-19B	4/28/2004	< 0.2	—	< 0.2	—	< 1.0	—	< 1.2	< 1.0
	11/8/2004	< 0.2	—	0.6	± 0.5	< 1.0	—	< 1.6	< 1.0
	4/14/2005	< 0.2	—	0.6	± 0.3	< 1.0	—	< 1.6	1.5
	11/9/2005	< 0.2	—	1.2	± 0.4	1.6	± 0.9	2.8	1.4
	1/9/2006	< 0.2	—	0.8	± 0.6	< 1.0	—	< 1.8	< 1.0
	3/9/2006	< 0.2	—	0.7	± 0.4	< 1.0	—	< 1.7	1.6
	5/11/2006	< 0.2	—	< 0.2	± 0.2	< 1.0	—	< 1.2	< 1.0
RPI-20A	4/28/2004	< 0.2	—	0.4	± 0.3	< 1.0	—	< 1.4	< 1.0
	11/8/2004	< 0.2	—	< 0.2	—	< 1.0	—	< 1.2	< 1.0
	4/20/2005	0.2	± 0.2	0.2	± 0.3	< 1.0	—	< 1.2	< 1.0
	11/9/2005	< 0.2	—	2.3	± 0.5	1.7	± 0.9	4.0	2.2
	1/10/2006	< 0.2	—	1.4	± 0.4	1.3	± 0.9	2.7	< 1.0
	3/9/2006	< 0.2	—	0.5	± 0.3	< 1.0	—	< 1.5	1.2
	5/11/2006	< 0.2	—	0.5	± 0.3	< 1.0	—	< 1.5	1.0
RPI-21B	4/28/2004	< 0.2	—	0.6	± 0.4	< 1.0	—	< 1.6	< 1.0

TABLE 2. MONITOR WELL WATER-LEVEL AND WATER-QUALITY DATA (cont'd.)

Sample Point Name	Date	Th230 (pCi/l)	Th230(e) (pCi/l)	Ra226 (pCi/l)	Ra226(e) (pCi/l)	Ra228 (pCi/l)	Ra228(e) (pCi/l)	Ra226+228 (pCi/l)	Alpha (pCi/l)
RPI-21B	11/8/2004	< 0.2	—	0.4	± 0.3	< 1.0	—	< 1.4	< 1.0
	4/20/2005	0.2	± 0.2	0.8	± 0.4	< 1.0	—	< 1.8	< 1.0
	11/9/2005	< 0.2	—	1.1	± 0.4	< 1.0	—	< 2.1	1.1
	1/10/2006	< 0.2	—	0.7	± 0.4	1.3	± 1.0	2.0	< 1.0
	3/14/2006	< 0.2	—	< 0.2	± 0.2	< 1.0	—	< 1.2	< 1.0
	5/11/2006	< 0.2	—	< 0.2	± 0.2	< 1.0	—	< 1.2	< 1.0

TABLE 2. MONITOR WELL WATER-LEVEL AND WATER-QUALITY DATA (cont'd.)

Sample Point Name	Date	As (mg/l)	Ba (mg/l)	Be (mg/l)	Cd (mg/l)	Cr (mg/l)	Mo (mg/l)	Ni (mg/l)	Pb (mg/l)	NO3+NO2 (mg/l)
MC07	2/10/2004	—	—	—	—	—	—	—	—	1.03
	4/26/2004	0.002	0.038	< 0.001	< 0.001	0.002	0.006	< 0.003	< 0.001	0.98
	8/12/2004	—	—	—	—	—	—	—	—	0.93
	11/4/2004	0.003	< 0.100	< 0.010	< 0.010	< 0.050	< 0.100	< 0.050	< 0.050	1.00
	2/3/2005	—	—	—	—	—	—	—	—	0.90
	4/11/2005	0.002	< 0.100	< 0.010	< 0.010	< 0.050	< 0.100	< 0.050	< 0.050	0.40
	8/8/2005	—	—	—	—	—	—	—	—	0.50
	11/7/2005	0.005	< 0.100	< 0.010	< 0.010	< 0.050	< 0.100	< 0.050	< 0.050	< 0.10
	1/16/2006	0.003	< 0.100	< 0.010	< 0.010	< 0.050	< 0.100	< 0.050	< 0.050	0.30
	3/27/2006	0.004	< 0.100	< 0.010	< 0.010	< 0.050	< 0.100	< 0.050	—	0.50
	5/9/2006	0.002	< 0.100	< 0.010	< 0.010	< 0.050	< 0.100	< 0.050	< 0.050	0.30
MC10	11/21/2005	0.003	< 0.100	< 0.010	< 0.010	< 0.050	< 0.100	< 0.050	< 0.050	0.70
	1/16/2006	0.006	< 0.100	< 0.010	< 0.010	< 0.050	< 0.100	< 0.050	< 0.050	1.10
	3/27/2006	0.008	< 0.100	< 0.010	< 0.010	< 0.050	< 0.100	< 0.050	—	0.50
	5/9/2006	0.006	< 0.100	< 0.010	< 0.010	< 0.050	< 0.100	< 0.050	< 0.050	0.20
MC11	2/11/2004	—	—	—	—	—	—	—	—	< 0.10
	4/27/2004	0.002	0.094	< 0.001	< 0.001	0.002	< 0.001	0.004	< 0.001	0.10
	8/13/2004	—	—	—	—	—	—	—	—	< 0.10
	11/4/2004	0.002	0.100	< 0.010	< 0.010	< 0.050	< 0.100	< 0.050	< 0.050	< 0.10
	2/3/2005	—	—	—	—	—	—	—	—	0.20
	4/11/2005	0.002	< 0.100	< 0.010	< 0.010	< 0.050	< 0.100	< 0.050	< 0.050	< 0.10
	8/9/2005	—	—	—	—	—	—	—	—	< 0.10
	11/8/2005	0.002	0.100	< 0.010	< 0.010	< 0.050	< 0.100	< 0.050	< 0.050	< 0.10
	1/16/2006	0.002	0.100	< 0.010	< 0.010	< 0.050	< 0.100	< 0.050	< 0.050	< 0.10
	3/27/2006	0.002	0.100	< 0.010	< 0.010	< 0.050	< 0.100	< 0.050	—	< 0.10
	5/9/2006	0.002	0.100	< 0.010	< 0.010	< 0.050	< 0.100	< 0.050	< 0.050	< 0.10
MC14	2/11/2004	—	—	—	—	—	—	—	—	< 0.10
	4/27/2004	0.004	0.058	< 0.001	< 0.001	< 0.001	0.002	0.002	< 0.001	< 0.10
	8/13/2004	—	—	—	—	—	—	—	—	< 0.10
	11/5/2004	0.003	< 0.100	< 0.010	< 0.010	< 0.050	< 0.100	< 0.050	< 0.050	< 0.10
	2/14/2005	0.004	< 0.100	—	< 0.005	< 0.050	< 0.100	< 0.050	< 0.050	< 0.10
	4/11/2005	0.004	< 0.100	< 0.010	< 0.010	< 0.050	< 0.100	< 0.050	< 0.050	< 0.10
	8/9/2005	—	—	—	—	—	—	—	—	< 0.10
	11/8/2005	0.004	< 0.100	< 0.010	< 0.010	< 0.050	< 0.100	< 0.050	< 0.050	< 0.10
	1/16/2006	0.003	< 0.100	< 0.010	< 0.010	< 0.050	< 0.100	< 0.050	< 0.050	< 0.10
	3/27/2006	0.003	< 0.100	< 0.010	< 0.010	< 0.050	< 0.100	< 0.050	—	< 0.10
	5/9/2006	0.004	< 0.100	< 0.010	< 0.010	< 0.050	< 0.100	< 0.050	< 0.050	< 0.10
NP01	2/12/2004	—	—	—	—	—	—	—	—	0.79

TABLE 2. MONITOR WELL WATER-LEVEL AND WATER-QUALITY DATA (cont'd.)

Sample Point Name	Date	As (mg/l)	Ba (mg/l)	Be (mg/l)	Cd (mg/l)	Cr (mg/l)	Mo (mg/l)	Ni (mg/l)	Pb (mg/l)	NO3+NO2 (mg/l)
NP01	4/28/2004	0.005	0.048	< 0.001	< 0.001	0.002	0.006	0.004	< 0.001	0.82
	8/18/2004	—	—	—	—	—	—	—	—	1.90
	11/8/2004	0.006	< 0.100	< 0.010	< 0.010	< 0.050	< 0.100	< 0.050	< 0.050	1.20
	2/7/2005	—	—	—	—	—	—	—	—	0.60
	4/14/2005	0.005	< 0.100	< 0.010	< 0.010	< 0.050	< 0.100	< 0.050	< 0.050	0.50
	8/15/2005	—	—	—	—	—	—	—	—	0.30
	11/8/2005	0.006	< 0.100	< 0.010	< 0.010	< 0.050	< 0.100	< 0.050	< 0.050	0.80
	1/11/2006	0.006	< 0.100	< 0.010	< 0.010	< 0.050	< 0.100	< 0.050	< 0.050	1.00
	3/14/2006	0.005	< 0.100	< 0.010	< 0.010	< 0.050	< 0.100	< 0.050	< 0.050	0.30
	5/10/2006	0.005	< 0.100	< 0.010	< 0.010	< 0.050	< 0.100	< 0.050	< 0.050	< 0.10
P-6	10/20/2004	0.006	< 0.100	< 0.010	< 0.010	< 0.050	< 0.100	< 0.050	< 0.050	9.30
	11/10/2005	0.004	< 0.100	< 0.010	< 0.010	< 0.050	< 0.100	< 0.050	< 0.050	4.30
	1/11/2006	0.004	< 0.100	< 0.010	< 0.010	< 0.050	< 0.100	< 0.050	< 0.050	5.30
	3/14/2006	0.005	0.100	< 0.010	< 0.010	< 0.050	< 0.100	< 0.050	< 0.050	1.80
	5/10/2006	0.006	0.200	< 0.010	< 0.010	< 0.050	< 0.100	< 0.050	< 0.050	2.60
RPI-8A	11/10/2005	0.003	< 0.100	< 0.010	< 0.010	< 0.050	< 0.100	< 0.050	< 0.050	1.10
	1/10/2006	0.002	< 0.100	< 0.010	< 0.010	< 0.050	< 0.100	< 0.050	< 0.050	0.60
	3/8/2006	0.002	< 0.100	< 0.010	< 0.010	< 0.050	< 0.100	< 0.050	< 0.050	1.60
	5/10/2006	0.002	< 0.100	< 0.010	< 0.010	< 0.050	< 0.100	< 0.050	< 0.050	< 0.10
RPI-10	2/11/2004	—	—	—	—	—	—	—	—	0.36
	8/19/2004	—	—	—	—	—	—	—	—	0.35
	2/7/2005	—	—	—	—	—	—	—	—	0.20
	11/10/2005	0.003	< 0.100	< 0.010	< 0.010	< 0.050	< 0.100	< 0.050	< 0.050	0.30
	1/9/2006	0.001	< 0.100	< 0.010	< 0.010	< 0.050	< 0.100	< 0.050	< 0.050	0.20
	3/8/2006	0.001	< 0.100	< 0.010	< 0.010	< 0.050	< 0.100	< 0.050	< 0.050	0.20
	5/10/2006	0.001	< 0.100	< 0.010	< 0.010	< 0.050	< 0.100	< 0.050	< 0.050	< 0.10
RPI-14	11/10/2005	0.002	< 0.100	< 0.010	< 0.010	< 0.050	< 0.100	< 0.050	< 0.050	0.80
	1/9/2006	0.002	< 0.100	< 0.010	< 0.010	< 0.050	< 0.100	< 0.050	< 0.050	0.60
	3/8/2006	0.002	< 0.100	< 0.010	< 0.010	< 0.050	< 0.100	< 0.050	< 0.050	0.80
	5/11/2006	0.002	< 0.100	< 0.010	< 0.010	< 0.050	< 0.100	< 0.050	< 0.050	< 0.10
RPI-16A	10/28/2004	0.009	< 0.100	< 0.010	< 0.010	< 0.050	< 0.100	< 0.050	< 0.050	1.00
	11/10/2005	0.009	< 0.100	< 0.010	< 0.010	< 0.050	< 0.100	< 0.050	< 0.050	0.90
	1/12/2006	0.008	< 0.100	< 0.010	< 0.010	< 0.050	< 0.100	< 0.050	< 0.050	0.60
	3/9/2006	0.009	< 0.100	< 0.010	< 0.010	< 0.050	< 0.100	< 0.050	< 0.050	1.00
	5/11/2006	0.008	< 0.100	< 0.010	< 0.010	< 0.050	< 0.100	< 0.050	< 0.050	< 0.10
RPI-18A	10/28/2004	0.007	< 0.100	< 0.010	< 0.010	< 0.050	< 0.100	< 0.050	< 0.050	0.20
	11/10/2005	0.007	< 0.100	< 0.010	< 0.010	< 0.050	< 0.100	< 0.050	< 0.050	0.30
	1/12/2006	0.005	< 0.100	< 0.010	< 0.010	< 0.050	< 0.100	< 0.050	< 0.050	< 0.10

TABLE 2. MONITOR WELL WATER-LEVEL AND WATER-QUALITY DATA (cont'd.)

Sample Point Name	Date	As (mg/l)	Ba (mg/l)	Be (mg/l)	Cd (mg/l)	Cr (mg/l)	Mo (mg/l)	Ni (mg/l)	Pb (mg/l)	NO3+NO2 (mg/l)
RPI-18A	3/9/2006	0.005	< 0.100	< 0.010	< 0.010	< 0.050	< 0.100	< 0.050	< 0.050	< 0.10
	5/11/2006	0.005	< 0.100	< 0.010	< 0.010	< 0.050	< 0.100	< 0.050	< 0.050	< 0.10
RPI-19B	2/13/2004	—	—	—	—	—	—	—	—	0.34
	4/28/2004	0.002	0.038	< 0.001	< 0.001	< 0.001	0.003	0.008	< 0.001	0.22
	8/19/2004	—	—	—	—	—	—	—	—	0.16
	11/8/2004	0.003	< 0.100	< 0.010	< 0.010	< 0.050	< 0.100	< 0.050	< 0.050	< 0.10
	2/8/2005	—	—	—	—	—	—	—	—	< 0.10
	4/14/2005	0.002	< 0.100	< 0.010	< 0.010	< 0.050	< 0.100	< 0.050	< 0.050	< 0.10
	8/15/2005	—	—	—	—	—	—	—	—	0.10
	11/9/2005	0.003	< 0.100	< 0.010	< 0.010	< 0.050	< 0.100	< 0.050	< 0.050	0.20
	1/9/2006	0.002	< 0.100	< 0.010	< 0.010	< 0.050	< 0.100	< 0.050	< 0.050	0.20
	3/9/2006	0.002	< 0.100	< 0.010	< 0.010	< 0.050	< 0.100	< 0.050	< 0.050	0.10
	5/11/2006	0.005	< 0.100	< 0.010	< 0.010	< 0.050	< 0.100	< 0.050	< 0.050	< 0.10
RPI-20A	4/28/2004	0.018	0.037	< 0.001	< 0.001	< 0.001	0.001	0.007	< 0.001	< 0.10
	8/19/2004	—	—	—	—	—	—	—	—	< 0.10
	11/8/2004	0.023	< 0.100	< 0.010	< 0.010	< 0.050	< 0.100	< 0.050	< 0.050	< 0.10
	2/8/2005	—	—	—	—	—	—	—	—	< 0.10
	4/20/2005	0.023	< 0.100	< 0.010	< 0.010	< 0.050	< 0.100	< 0.050	< 0.050	< 0.10
	8/15/2005	—	—	—	—	—	—	—	—	< 0.10
	11/9/2005	0.024	0.100	< 0.010	< 0.010	< 0.050	< 0.100	< 0.050	< 0.050	< 0.10
	1/10/2006	0.021	< 0.100	< 0.010	< 0.010	< 0.050	< 0.100	< 0.050	< 0.050	< 0.10
	3/9/2006	0.021	< 0.100	< 0.010	< 0.010	< 0.050	< 0.100	< 0.050	< 0.050	< 0.10
	5/11/2006	0.002	< 0.100	< 0.010	< 0.010	< 0.050	< 0.100	< 0.050	< 0.050	< 0.10
RPI-21B	2/13/2004	—	—	—	—	—	—	—	—	0.33
	4/28/2004	0.004	0.034	< 0.001	< 0.001	< 0.001	0.007	0.006	< 0.001	0.28
	8/19/2004	—	—	—	—	—	—	—	—	0.31
	11/8/2004	0.004	< 0.100	< 0.010	< 0.010	< 0.050	< 0.100	< 0.050	< 0.050	0.40
	2/8/2005	—	—	—	—	—	—	—	—	0.20
	4/20/2005	0.003	< 0.100	< 0.010	< 0.010	< 0.050	< 0.100	< 0.050	< 0.050	0.10
	8/15/2005	—	—	—	—	—	—	—	—	< 0.10
	11/9/2005	0.004	< 0.100	< 0.010	< 0.010	< 0.050	< 0.100	< 0.050	< 0.050	0.20
	1/10/2006	0.004	< 0.100	< 0.010	< 0.010	< 0.050	< 0.100	< 0.050	< 0.050	0.20
	3/14/2006	0.004	< 0.100	< 0.010	< 0.010	< 0.050	< 0.100	< 0.050	< 0.050	< 0.10
	5/11/2006	0.017	< 0.100	< 0.010	< 0.010	< 0.050	< 0.100	< 0.050	< 0.050	< 0.10

TABLE 3. SURFACE WATER MONITORING DATA

Sample Point Name	Date	pH(f) (std. units)	Cond(f) (µmhos)	TDS (mg/l)	SO4 (mg/l)	Cl (mg/l)	Unat (mg/l)	Se (mg/l)
POE-DS	11/21/2005	5.05	431	273	28	15.0	0.0272	0.001
	1/23/2006	6.28	452	270	28	14.0	0.0301	0.001
	3/20/2006	7.17	416	—	—	—	0.0227	< 0.001
	5/12/2006	7.95	464	482	31	17.0	0.0326	0.002
SC1	11/21/2005	6.33	424	260	27	18.0	0.0253	< 0.001
	1/19/2006	6.51	375	252	20	13.0	0.0227	0.001
	3/20/2006	7.82	398	—	—	—	0.0220	0.002
	5/12/2006	8.30	427	276	27	16.0	0.0311	< 0.001
SC2	11/8/2005	6.50	389	250	20	14.0	0.0228	< 0.001
	1/19/2006	6.48	379	243	20	14.0	0.0227	0.001
	3/15/2006	8.29	421	254	24	17.0	0.0256	0.001
	5/12/2006	8.47	414	344	25	16.0	0.0277	0.001
SW-1A	5/13/2004	7.15	751	521	132	40.2	0.1300	0.002
	11/9/2004	7.20	287	204	17	6.0	0.0164	< 0.001
	5/2/2005	6.80	265	205	13	2.0	0.0189	0.001
	11/8/2005	6.91	324	208	14	3.0	0.0181	< 0.001
	1/23/2006	6.24	315	198	14	2.0	0.0178	0.001
	3/28/2006	7.60	308	220	19	4.0	0.0165	< 0.001
	5/12/2006	8.53	321	320	17	3.0	0.0238	0.002
WEIR 2	11/21/2005	6.27	424	280	21	18.0	0.0232	< 0.001
	1/19/2006	6.66	637	252	19	13.0	0.0218	0.001
	3/15/2006	7.82	432	252	21	17.0	0.0256	0.001
	5/12/2006	8.43	409	206	23	15.0	0.0265	< 0.001

TABLE 3. SURFACE WATER MONITORING DATA (cont'd)

Sample Point Name	Date	Th230 (pCi/l)	Th230(e) (pCi/l)	Ra226 (pCi/l)	Ra226(e) (pCi/l)	Ra228 (pCi/l)	Ra228(e) (pCi/l)	Ra226+228 (pCi/l)	Alpha (pCi/l)	Alpha(e) (pCi/l)
POE-DS	11/21/2005	< 0.20	—	0.6	± 0.4	< 1.0	—	< 1.6	1.8	± 1.2
	1/23/2006	< 0.20	—	0.6	± 0.4	< 1.0	—	< 1.6	< 1.0	—
	3/20/2006	< 0.20	—	1.1	± 0.5	< 1.0	—	< 2.1	1.1	± 1.0
	5/12/2006	< 0.20	—	0.8	± 0.3	< 1.0	—	< 1.8	< 1.0	—
SC1	11/21/2005	< 0.20	—	0.5	± 0.3	< 1.0	—	< 1.5	< 1.0	—
	1/19/2006	< 0.20	—	0.6	± 0.3	< 1.0	—	< 1.6	< 1.0	—
	3/20/2006	< 0.20	—	< 0.2	± 0.2	< 1.0	—	< 1.2	< 1.0	—
	5/12/2006	< 0.20	—	0.5	± 0.3	< 1.0	—	< 1.5	< 1.0	—
SC2	11/8/2005	< 0.20	—	1.4	± 0.6	< 1.0	—	< 2.4	1.0	± 0.7
	1/19/2006	< 0.20	—	0.4	± 0.3	< 1.0	—	< 1.4	< 1.0	—
	3/15/2006	< 0.20	—	< 0.2	± 0.2	< 1.0	—	< 1.2	< 1.0	—
	5/12/2006	< 0.20	—	< 0.2	± 0.2	< 1.0	—	< 1.2	< 1.0	—
SW-1A	5/13/2004	< 0.20	—	< 0.2	—	< 1.0	—	< 1.2	< 1.0	—
	11/9/2004	< 0.20	—	< 0.2	—	1.3	± 1.2	< 1.5	< 1.0	—
	5/2/2005	< 0.20	—	1.2	± 0.6	1.3	± 1.1	2.5	< 1.0	—
	11/8/2005	< 0.20	—	0.8	± 0.4	1.6	± 0.9	2.4	< 1.0	—
	1/23/2006	< 0.20	—	0.5	± 0.4	< 1.0	—	< 1.5	< 1.0	—
	3/28/2006	< 1.00	—	0.6	± 0.3	< 1.0	—	< 1.6	< 1.0	—
	5/12/2006	< 0.20	—	< 0.2	± 0.2	< 1.0	—	< 1.2	< 1.0	—
WEIR 2	11/21/2005	< 0.20	—	0.6	± 0.3	< 1.0	—	< 1.6	1.0	± 1.0
	1/19/2006	< 0.20	—	0.5	± 0.3	< 1.0	—	< 1.5	1.2	± 0.7
	3/15/2006	< 0.20	—	< 0.2	± 0.2	< 1.0	—	< 1.2	< 1.0	—
	5/12/2006	< 0.20	—	< 0.2	± 0.2	< 1.0	—	< 1.2	< 1.0	—

TABLE 3. SURFACE WATER MONITORING DATA (cont'd)

Sample Point Name	Date	As (mg/l)	Ba (mg/l)	Be (mg/l)	Cd (mg/l)	Cr (mg/l)	Mo (mg/l)	Pb (mg/l)	Ni (mg/l)
POE-DS	11/21/2005	0.006	0.10	< 0.010	< 0.010	< 0.050	< 0.100	< 0.050	< 0.050
	1/23/2006	0.005	0.10	< 0.010	< 0.010	< 0.050	< 0.100	< 0.050	< 0.050
	3/20/2006	0.004	< 0.10	< 0.010	< 0.010	< 0.050	< 0.100	< 0.050	< 0.050
	5/12/2006	0.004	< 0.10	< 0.010	< 0.010	< 0.050	< 0.100	< 0.050	< 0.050
SC1	11/21/2005	0.005	0.10	< 0.010	< 0.010	< 0.050	< 0.100	< 0.050	< 0.050
	1/19/2006	0.005	0.10	< 0.010	< 0.010	< 0.050	< 0.100	< 0.050	< 0.050
	3/20/2006	0.004	< 0.10	< 0.010	< 0.010	< 0.050	< 0.100	< 0.050	< 0.050
	5/12/2006	0.005	< 0.10	< 0.010	< 0.010	< 0.050	< 0.100	< 0.050	< 0.050
SC2	11/8/2005	0.005	< 0.10	< 0.010	< 0.010	< 0.050	< 0.100	< 0.050	< 0.050
	1/19/2006	0.005	0.10	< 0.010	< 0.010	< 0.050	< 0.100	< 0.050	< 0.050
	3/15/2006	0.005	< 0.10	< 0.010	< 0.010	< 0.050	< 0.100	< 0.050	< 0.050
	5/12/2006	0.005	< 0.10	< 0.010	< 0.010	< 0.050	< 0.100	< 0.050	< 0.050
SW-1A	5/13/2004	0.003	0.09	< 0.001	< 0.001	< 0.001	0.004	< 0.001	0.003
	11/9/2004	0.004	< 0.10	< 0.010	< 0.010	< 0.050	< 0.100	< 0.050	< 0.050
	5/2/2005	0.005	< 0.10	< 0.010	< 0.010	< 0.050	< 0.100	< 0.050	< 0.050
	11/8/2005	0.004	< 0.10	< 0.010	< 0.010	< 0.050	< 0.100	< 0.050	< 0.050
	1/23/2006	0.005	< 0.10	< 0.010	< 0.010	< 0.050	< 0.100	< 0.050	< 0.050
	3/28/2006	0.004	< 0.10	< 0.010	< 0.010	< 0.050	< 0.100	—	< 0.050
	5/12/2006	0.005	< 0.10	< 0.010	< 0.010	< 0.050	< 0.100	< 0.050	< 0.050
WEIR 2	11/21/2005	0.005	0.10	< 0.010	< 0.010	< 0.050	< 0.100	< 0.050	< 0.050
	1/19/2006	0.005	0.10	< 0.010	< 0.010	< 0.050	< 0.100	< 0.050	< 0.050
	3/15/2006	0.005	< 0.10	< 0.010	< 0.010	< 0.050	< 0.100	< 0.050	< 0.050
	5/12/2006	0.005	< 0.10	< 0.010	< 0.010	< 0.050	< 0.100	< 0.050	< 0.050