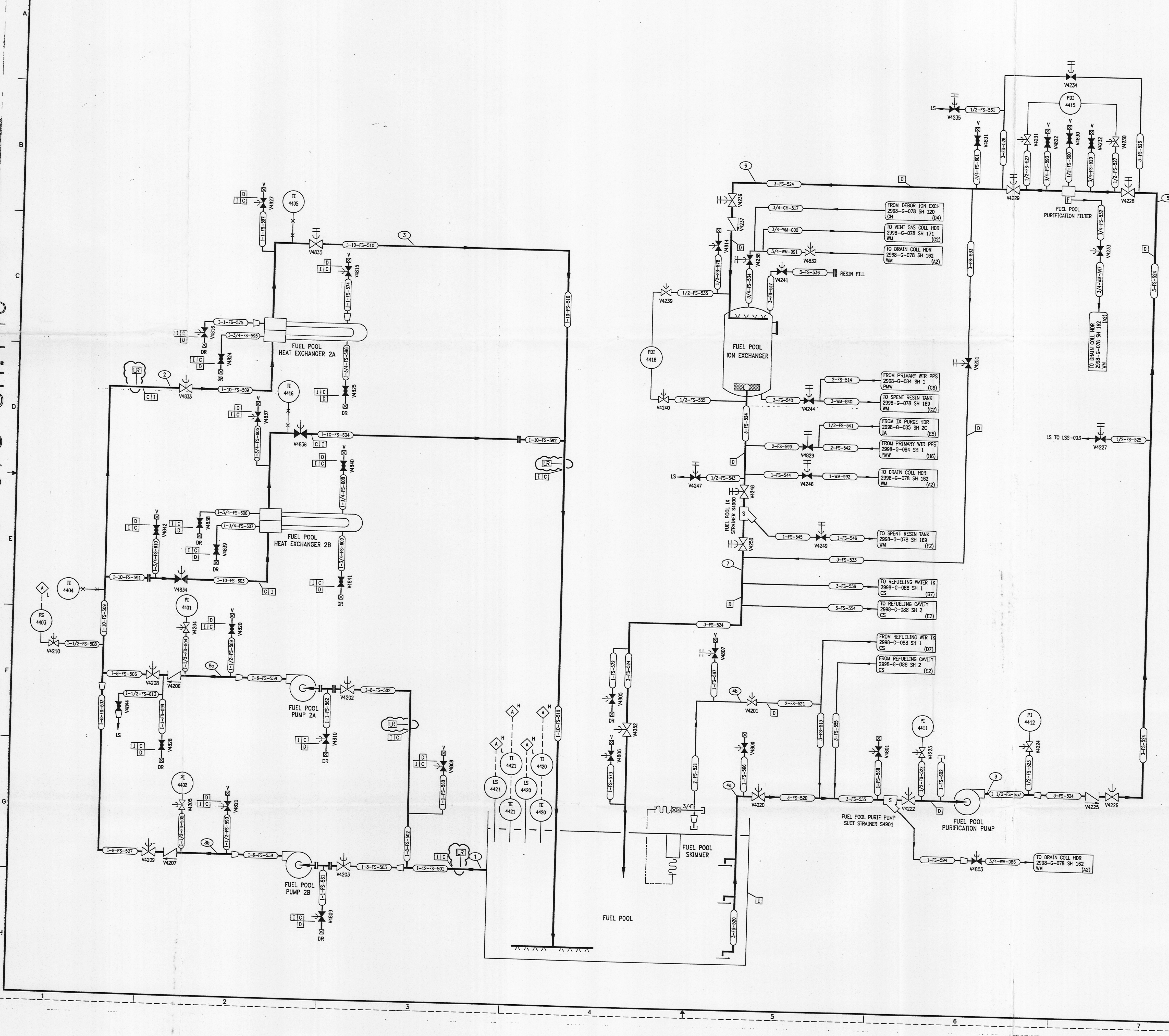


2998-G-078
SH 140

DRAWING NUMBER
2998-G-078

DRAWING NUMBER
SH 140

NUMBER



REVISIONS				
NO	DATE	DESCRIPTION	BY	APPROVED
5	7/24/95	DESCRIPTION	BB	JJZ
6	5/15/01	DESCRIPTION	GM	SHC
7	11/11/01	DESCRIPTION	GM	SHC

- NOTES
1. THE FUEL POOL PURIFICATION SECTION LINE (3-FS-520) HAS A 1/4" DIAMETER SYPHON BREAKER HOLE LOCATED 1'-2 1/2" BELOW THE NORMAL POOL WATER LEVEL.
 2. THE FUEL POOL COOLING RETURN LINE (1-10-FS-510) HAS A 1/2" DIAMETER SYPHON BREAKER HOLE LOCATED 1'-0" BELOW NORMAL POOL WATER LEVEL.
 3. THE FUEL POOL PURIFICATION RETURN LINE (3-FS-520) DOES NOT REQUIRE A SYPHON BREAKER SINCE THE PIPE TERMINATES AT A SUBMERGENCE ELEVATION THAT WOULD PRECLUDE EXCESSIVE DRAINAGE BY SYPHON ACTION.

REFERENCE DRAWINGS	
PIPE VALVE & INSTRUMENT SYMBOLS	2998-G-078 SH 100
VALVE LIST	2998-A-051
LINE LIST	2998-B-052
WALK OPERATIONAL NUMBER INDEX	2998-B-053A
INSTRUMENT INSTALLATION DETAILS	2998-B-231
INSTRUMENT LIST	2998-B-270C

NOTE: THIS DRAWING IS MADE FROM REV. 4 OF DRAWING 2998-G-078 SH 140.

REVISION OF THIS DRAWING MAY REQUIRE UPDATE OF THE FOLLOWING DOCUMENTS: FSAR FIGURE 9.1-6

NUCLEAR SAFETY RELATED IN PART ONLY

FLORIDA POWER & LIGHT COMPANY
ST. LUCIE PLANT
1983 - 890 MW EXTENSION - UNIT 2
FLOW DIAGRAM
FUEL POOL SYSTEM

SCALE	APPROVAL	DATE
ONE INCH = ONE FOOT	DATE: 11/11/01	DATE: 11/11/01
BY: J. BLUM	DATE: 11/11/01	DATE: 11/11/01
CH: W. POLINSKY	DATE: 11/11/01	DATE: 11/11/01

D-01