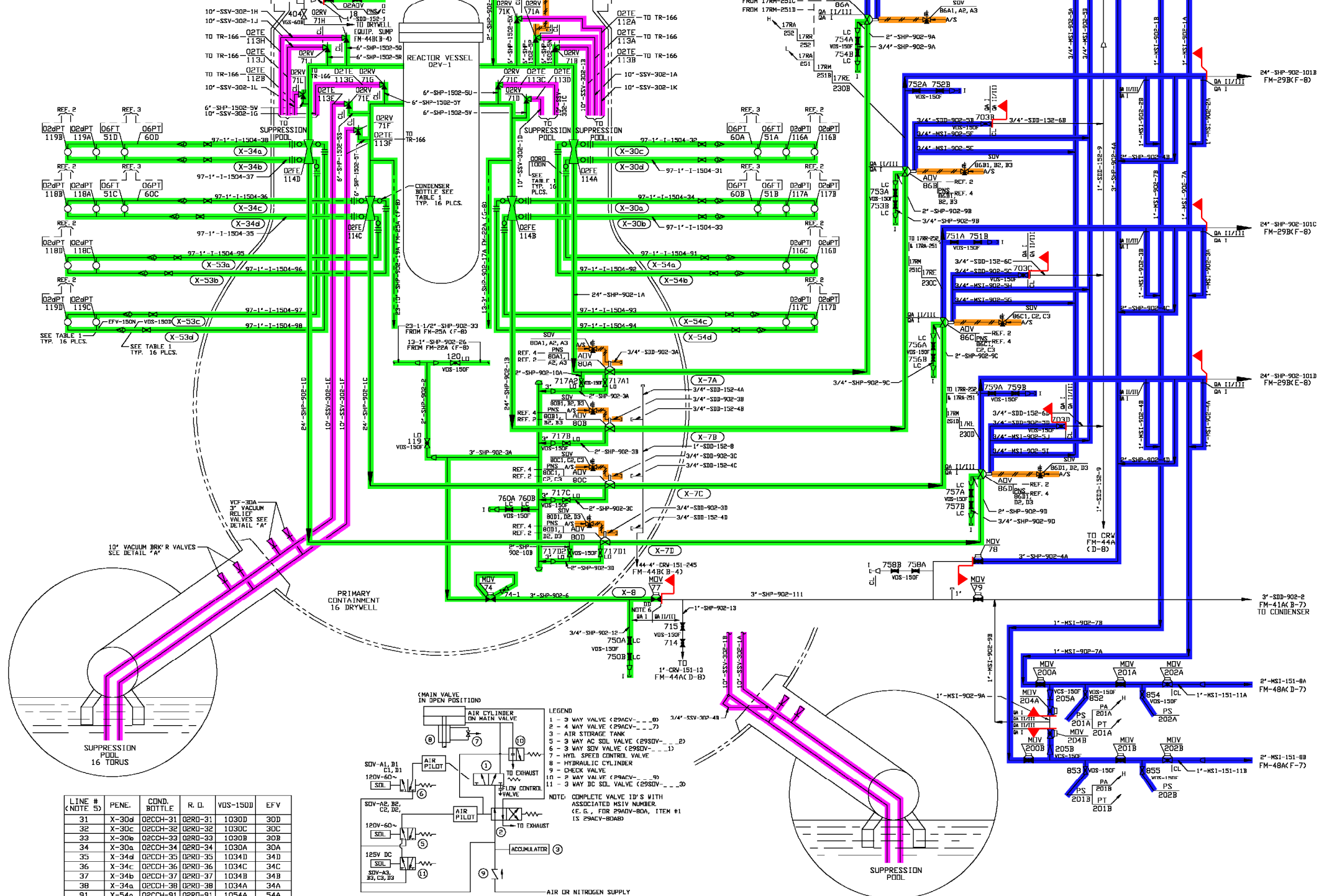


PIPE NUMBER	10" VACUUM BRK'R VALVE NUMBER	3" VACUUM RELIEF VALVE NUMBER
10"-SSV-302-1A	02VB-1	02RV-1
10"-SSV-302-1B	02VB-2	02RV-2
10"-SSV-302-1C	02VB-3	02RV-3
10"-SSV-302-1D	02VB-4	02RV-4
10"-SSV-302-1E	02VB-5	02RV-5
10"-SSV-302-1F	02VB-6	02RV-6
10"-SSV-302-1G	02VB-7	02RV-7
10"-SSV-302-1H	02VB-8	02RV-8
10"-SSV-302-1J	02VB-9	02RV-9
10"-SSV-302-1K	02VB-10	02RV-10
10"-SSV-302-1L	02VB-11	02RV-11

DETAIL "A"



LINE # (NOTE 5)	PENL	COND. BOTTLE	R. O.	VOS-150D	EFV
31	X-30d	02CCH-31	02RO-31	1030D	30D
32	X-30c	02CCH-32	02RO-32	1030C	30C
33	X-30b	02CCH-33	02RO-33	1030B	30B
34	X-30a	02CCH-34	02RO-34	1030A	30A
35	X-34d	02CCH-35	02RO-35	1034D	34D
36	X-34c	02CCH-36	02RO-36	1034C	34C
37	X-34b	02CCH-37	02RO-37	1034B	34B
38	X-34a	02CCH-38	02RO-38	1034A	34A
91	X-54a	02CCH-91	02RO-91	1054A	54A
92	X-54b	02CCH-92	02RO-92	1054B	54B
93	X-54c	02CCH-93	02RO-93	1054C	54C
94	X-54d	02CCH-94	02RO-94	1054D	54D
95	X-53a	02CCH-95	02RO-95	1053A	53A
96	X-53b	02CCH-96	02RO-96	1053B	53B
97	X-53c	02CCH-97	02RO-97	1053C	53C
98	X-53d	02CCH-98	02RO-98	1053D	53D

TABLE 1

TYPICAL ARRANGEMENT FOR MSIV PNEUMATIC CONTROL ASSEMBLY (CIRCUIT SHOWN WITH MSIV OPEN)

- NOTES
1. ALL COMPONENT MARK NUMBERS PREFIXED 29 UNLESS OTHERWISE NOTED.
 2. ALL MANUAL VALVES PREFIXED MST UNLESS OTHERWISE NOTED.
 3. ALL IRT CONNECTIONS (C) ARE PIPING CLASS IC-NB BEGINNING AT THE DOWNSTREAM SIDE OF THE REDUCER TO THE 3/8" IRT CONNECTION.
 4. RM DENOTES REMOTE MANUAL.
 5. LINE NO. PREFIXED: 1"-I-1504.
 6. DD - DOUBLE DISK GATE VALVE WITH HOLE DRILLED ON UPSTREAM SIDE.
 7. TUBING IS 304L/316L.

- REFERENCES:
1. FLOW DIAGRAM SYMBOLS FM-14A.
 2. NUCLEAR BOILER/MISC. SYSTEMS FUNCTIONAL CONTROL DIAGRAM. G. E. DWG. 730E149BAC&W FILE 16.04-20&21
 3. FEEDWATER CONTROL DIAGRAM G. E. DWG. 719E396BAC&W FILE 16.06-13
 4. REACTOR PROTECTION SYSTEM. G. E. DWG. 729E222BAC&W FILE 16.05-1, 2 & 3
 5. REACTOR WATER CLEANUP SYSTEM FM-24A.

SYSTEM INTENDED FUNCTION BOUNDARY

COMPONENTS SUBJECT TO AMR

- AUTOMATIC DEPRESSURIZATION SYSTEM AMM-04
- STANDBY GAS TREATMENT SYSTEM AMM-07
- INSTRUMENT AIR SYSTEM AMM-20
- REACTOR COOLANT SYSTEM PRESSURE BOUNDARY AMM-33

QA CAT. I, II/III

NUCLEAR SAFETY RELATED

JAMES A. FITZPATRICK

NUCLEAR POWER PLANT

FLOW DIAGRAM
MAIN STEAM
SYSTEM 29



SCALE: NONE
DWG NO: FM-29A
REV: 53

NO.	DATE	DESCRIPTION	BY	CHK	APP
0	4-13-06				
REVISIONS					
LRA-FM-29A-0					
LRA-FM-29A.53.DGN					
FM-29A.53.CAL					

NO.	DATE	DESCRIPTION	BY	CHK	APP
53	10/6/04	INCORPORATED DRN-04-06151 ER-JAF-04-35970	PD	RVB	MEC
REVISIONS					
52	10/10/00	AS BUILT PER DCR-01-253	KB	PJD	RM
51	8/28/00	AS BUILT PER MOD NO D1-98-008	RVB	PJD	HM
50			BNN	CHK	RE
49			RE	VFY	APP

SHEET 1 OF 1

REF: 1ST-FM-29A

EC-FM-29A