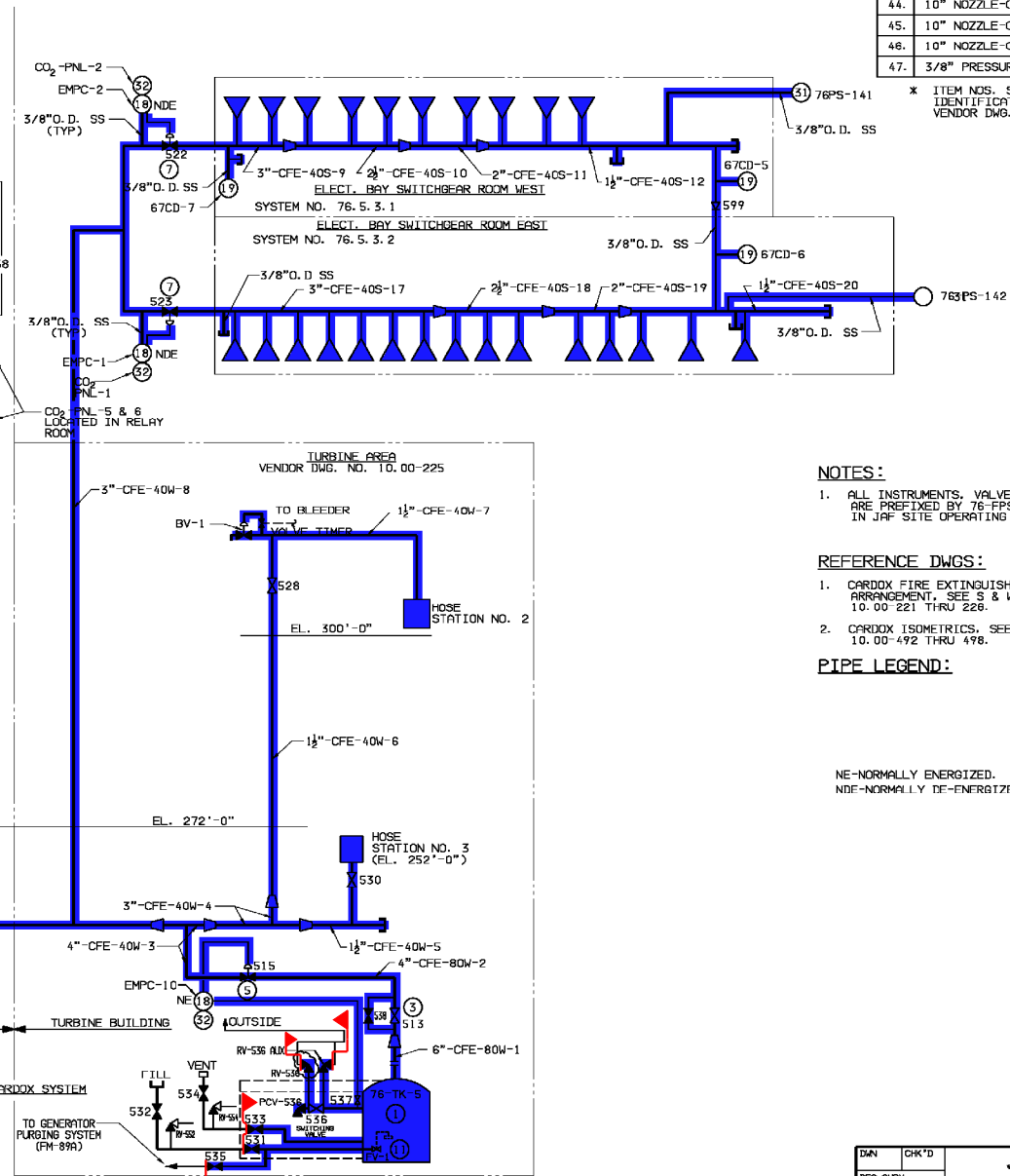


ITEM	DESCRIPTION
1.	10 TON CARDOX STORAGE UNIT
2.	3 TON CARDOX STORAGE UNIT
3.	4" TANK SHUT-OFF VALVE
4.	2" TANK SHUT-OFF VALVE
5.	4" MASTER VALVE PRESSURE OPERATED
6.	2" MASTER VALVE-PRESSURE OPERATED
7.	3" SELECTOR VALVE-PRESSURE OPERATED
8.	2" SELECTOR VALVE-PRESSURE OPERATED
10.	1" SELECTOR VALVE-PRESSURE OPERATED
11.	FLOAT VALVE
-	
18.	ELECTRO-MANUAL PILOT CABINET-N.D.E.
19.	$\frac{1}{2}$ " PRESSURE OPERATED RELEASE
20.	RELEASE BRACKET
-	
-	
31.	PRESSURE SWITCH-4 POLE-WEATHER PROOF
32.	ELECTRICAL CONTROL CABINET
-	
37.	$\frac{1}{2}$ " SHUTTLE VALVE-SCREWED
38.	10" NOZZLE-CODE 12. 0-1"FNPT
39.	10" NOZZLE-CODE 14. 0-1"FNPT
40.	10" NOZZLE-CODE 15. 0-1"FNPT
41.	10" NOZZLE-CODE 16. 0-1 $\frac{1}{2}$ "FNPT
44.	10" NOZZLE-CODE 18. 0-1 $\frac{1}{2}$ "FNPT
45.	10" NOZZLE-CODE 20. 0-1 $\frac{1}{2}$ "FNPT
46.	10" NOZZLE-CODE 22. 0-1 $\frac{1}{2}$ "FNPT
47.	3/8" PRESSURE OPERATED RELEASE



NOTES:

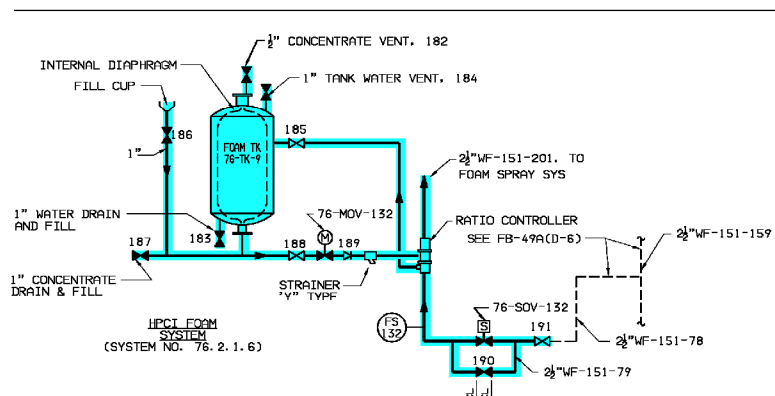
1. ALL INSTRUMENTS, VALVES & EQUIPMENT NOS. NOT PREFIXED ARE PREFIXED BY 76-FPS, AND ARE FURTHER DESCRIBED IN JAF SITE OPERATING PROCEDURE NO. F-OP-33.

REFERENCE DWGS:


1. CARDOX FIRE EXTINGUISHING SYSTEM SCHEMATIC
ARRANGEMENT, SEE S & W VENDOR DWG. NO.
10.00-221 THRU 226.
2. CARDOX ISOMETRICS, SEE S & W VENDOR DWG. NO.
10.00-492 THRU 498.

PIPE LEGEND:

NE-NORMALLY ENERGIZED.
NDE-NORMALLY DE-ENERGIZED.



11	10/1/90	AS BUILT PER DCR-00-335	JB	KMB	-	PJD	SKG
10	10/1/90	AS BUILT PER WFO-90-019	PJD	KMB	-	KM	SKG
9	1/7/99	AS BUILT PER MOD. NO. D1-98-156	KMB	KMB	-	PJD	DKI
8	10/9/98	AS BUILT PER DCR-98-215	DMC	PJD	--	KJ	SKG
REV NO	DATE	DESCRIPTION	DMN	CHK	RE	VFY	APP
REVISIONS							

DWN	OK'D	JAMES A. FITZPATRICK NUCLEAR POWER PLANT	
DES SUPV			
DISCIPLINE ENG		FLOW DIAGRAM CO ₂ & FOAM FIRE EXTINGUISHING SYSTEM	
DISCIPLINE MGR.			
PROJ APPROVAL			
DATE			
 Entergy Nuclear Northeast		SCALE	NONE
		DWG NO	REV
		FB-56A	12
		SHEET	OF

O	12-7-05					
NO.	DATE	DESCRIPTION	BY	ENG	CHK	APP
REVISIONS						
LRA-FB-56A-0						
CAD FILE LRA-FB-56A_12.DGN						
RASTER FILE FB-56A_12.CAL						