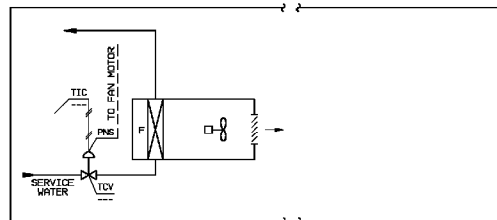


NOTES
1. ALL COMPONENT MARK NUMBERS PREFIXED 67 FOR SYSTEM 67
OR 69 FOR SYSTEM 69 UNLESS OTHERWISE NOTED.
2. FOR GENERAL NOTES & REFERENCE DWGS. SEE FB-16A.

FC - FAILS CLOSED
H - ALARMS ON HIGH TEMP. OR DIFFERENTIAL PRESSURE
L - ALARMS ON LOW TEMP. OR DIFFERENTIAL PRESSURE
AHU - AIR HANDLING UNIT

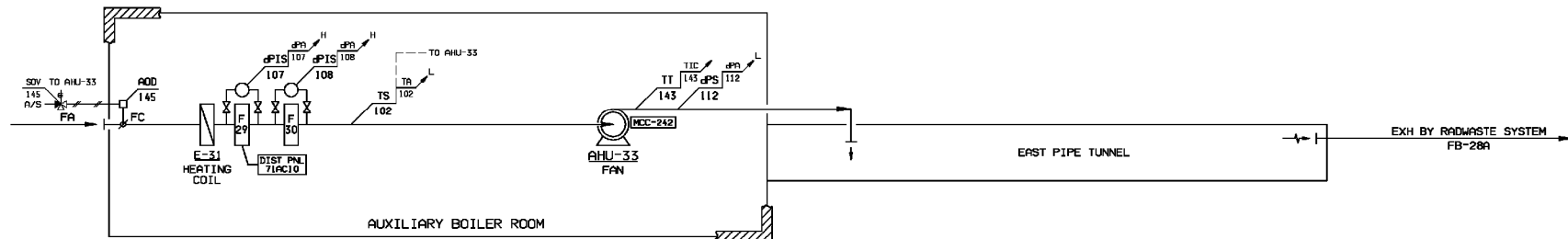
COOLING COIL NO.
E-11 (G-3)
E-14 (G-7)

EAST & WEST CABLE TUNNELS SYSTEM 67



67UC-45A OR 67UC-45B

SOUTH END OF WEST CABLE TUNNEL



EAST PIPE TUNNEL SYSTEM 69

THE ORIGINAL TRACING FOR THIS DRAWING WAS
PREPARED BY: STONE & WEBSTER CORP.

A RECORD OF THE ORIGINAL DOCUMENT WITH APPROVAL INITIALS/SIGNATURES
AND THE P.E. SEAL, AND SUBSEQUENT REVISIONS THEREOF WITH APPROVAL
INITIALS/SIGNATURES, IS MAINTAINED ON THE FILES OF THE NEW YORK
POWER AUTHORITY.

THIS DOCUMENT WAS ELECTRONICALLY STORED AT REVISION 12.

DATE	CHK'D	JAMES A. FITZPATRICK NUCLEAR POWER PLANT	
DES. SUPV.			
DISCIPLINE ENG.			
DISCIPLINE MGR.			
PROJ. APPROVAL			
DATE			
New York Power Authority		SCALE	NONE
		DWG. NO.	FB-16B
		SHEET	16

REV. NO.	DATE	DESCRIPTION	BY	CHK.	APP.
16	5/27/94	AS-BUILT PER MOD. NO. 11-89-049	JG	OK	RE
15	9/16/91	THIS DWG. IS REDRAWN & INCLUDES INFORMATION PREVIOUSLY SHOWN ON FB-16B REV. 13 & FIG. OF 62-1 REV. 6 AS-BUILT PER DCR-91-108	JG	OK	RE
14	12/1/90	THIS DRAWING IS REDRAWN & INCLUDES INFORMATION PREVIOUSLY SHOWN ON FB-16B REV. 13 & FIG. OF 62-1 REV. 5	JG	OK	RE

SYSTEM INTENDED
FUNCTION BOUNDARY

COMPONENTS SUBJECT TO AMR

HEATING, VENTILATION AND
AIR CONDITIONING SYSTEMS
AMR-16

NO.	DATE	DESCRIPTION	BY	ENG	CHK	APP.
REVISIONS						
LRA-FB-16B-0						
CAB FILE						
LRA-FB-16B_16.DGN						
XREF FILE						
FB-16B_16.CAL						