



The Health Network of

# THE CHESTER COUNTY HOSPITAL

704 E. Marshall Street • West Chester, PA 19380

Office of the President

H. L. Perry Pepper

Telephone: 610-431-5101

Br. 1

July 7, 2006

Licensing Branch  
Nuclear Materials Safety Section  
Division of Safety & Safeguards  
U.S. N.R.C. - Region I  
475 Allendale Rd.  
King of Prussia, PA 19406

RECEIVED  
REGION I  
2006 JUL 13 PM 12:19

Dear License Reviewer,

Please amend our license for the following items...

- ✓ Please add the following 10CFR35.500 byproduct material to our license.  

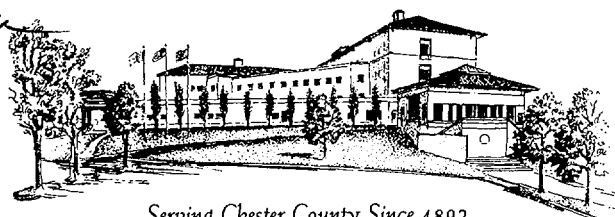
<sup>153</sup> Gd Sources:	Type:	Line Attenuation Correction Source
	Manufacturer:	Isotope Products Laboratories
	Model:	NES-8497
	Quantity:	2
	Activity:	240 mCi each, not to exceed 300 mCi
	Possession Limit:	1 Ci (1000 mCi)
- ✓ Please amend our license to include the new Nuclear Cardiology Suite located on the 2<sup>nd</sup> floor of the Chester County Hospital. The Areas of use will include a new Camera/Imaging Room and a Hot Lab for source storage, dose prep, and waste handling. Please see the enclosed scale diagrams for a complete summary of these locations.
- ✓ Please be informed that Jeffery Wahl, M.D., currently an authorized user of 10CFR 35.200 byproduct materials, will be expanding his duties to include use of 10CFR 35.500 byproduct materials, specifically for <sup>153</sup>Gd in the form of line attenuation correction sources for cardiac imaging procedures as listed above.

03014707

Our N.R.C. license no. is # 37-03390-03 (Chester County Hospital).

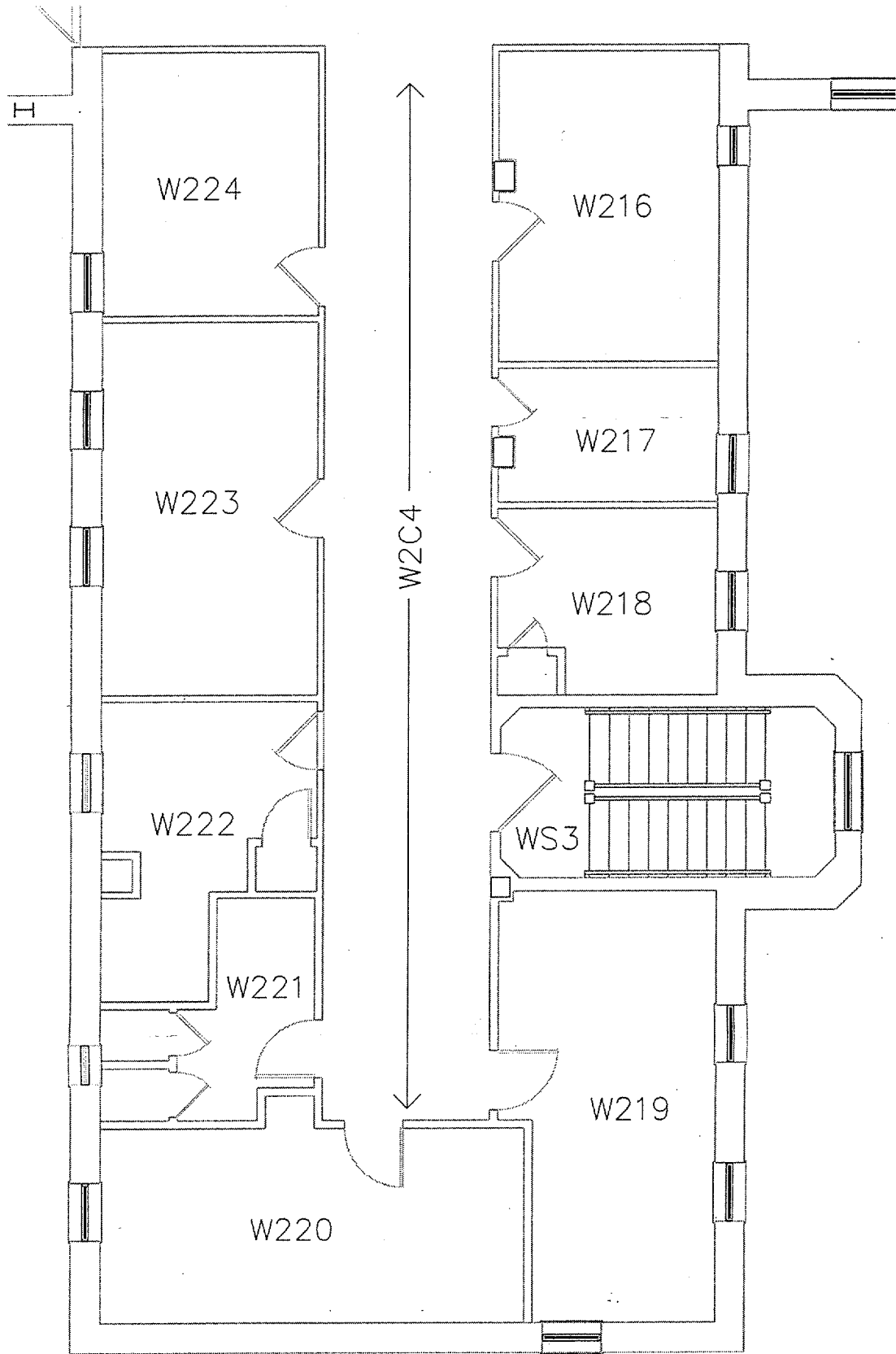
Sincerely,

H. L. Perry Pepper  
President



Serving Chester County Since 1892

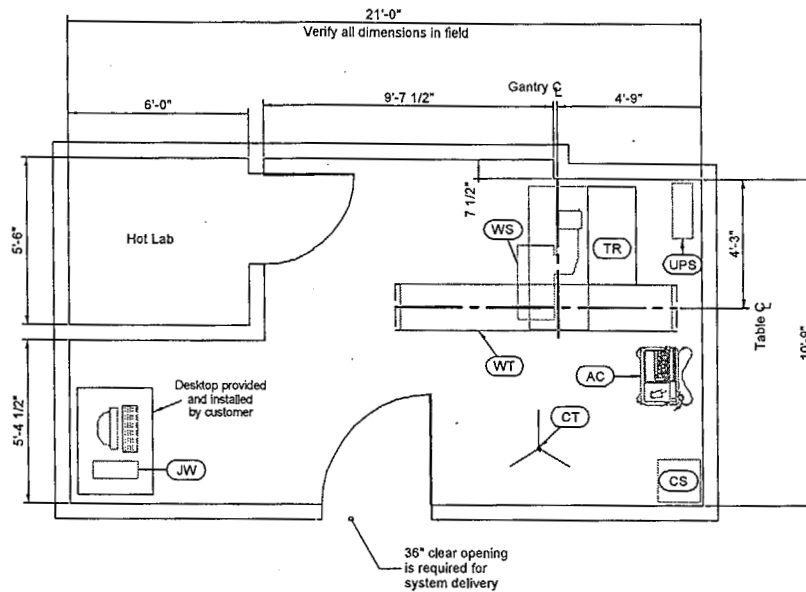
139122  
NMSS/RGNI MATERIALS-002



## WEST WING SECOND FLOOR PLAN



Scale: 1/8" = 1'



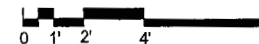
Equipment Legend			
A	WS	CardioMD System (supine & prone)	
A	WT	Patient Table	
A	AC	Acquisition Terminal on Cart	
G	UPS	2.2 kVA Uninterruptible Power Supply	
A	JW	Jetstream Workstation	
A	CS	Collimator Cabinet	
A	CT	Calibration Source Holder Tripod	
A	TR	Cable Tray	

#### Site Planning Issues and Considerations:

- \* Exact equipment configuration to be verified with local Philips Sales / Service.

## Option #2 Equipment Layout

Recommended Ceiling Height : 9'-0" (2743mm)  
Minimum Ceiling Height : 8'-0" (2438mm)



- Chester County Hospital -  
West Chester, PA  
Cardio MD III (Supine & Prone) - Room W220

Drawn By  
Hsue, Diana  
Quote Number  
N/A  
Date  
5-9-2006  
O.A. Number  
N/A

Project Number  
N-EAS060510

A2

Sheet 4 of 6

THE INFORMATION IN THIS PACKAGE IS PROVIDED AS A CUSTOMER CONVENIENCE, AND IS NOT TO BE CONSTRUED AS ARCHITECTURAL DRAWINGS OR CONSTRUCTION DOCUMENTS. Philips assumes no liability nor offers any warranty for the fitness or adequacy of the premises or the utilities available at the premises in which the equipment is to be installed, used, or stored.

02.27.06

This is to acknowledge the receipt of your letter/application dated

7/7/2006, and to inform you that the initial processing which includes an administrative review has been performed.

☒ Amendment 37-03390-03 There were no administrative omissions. Your application was assigned to a technical reviewer. Please note that the technical review may identify additional omissions or require additional information.

☐ Please provide to this office within 30 days of your receipt of this card

A copy of your action has been forwarded to our License Fee & Accounts Receivable Branch, who will contact you separately if there is a fee issue involved.

Your action has been assigned Mail Control Number 139122.  
When calling to inquire about this action, please refer to this control number.  
You may call us on (610) 337-5398, or 337-5260.