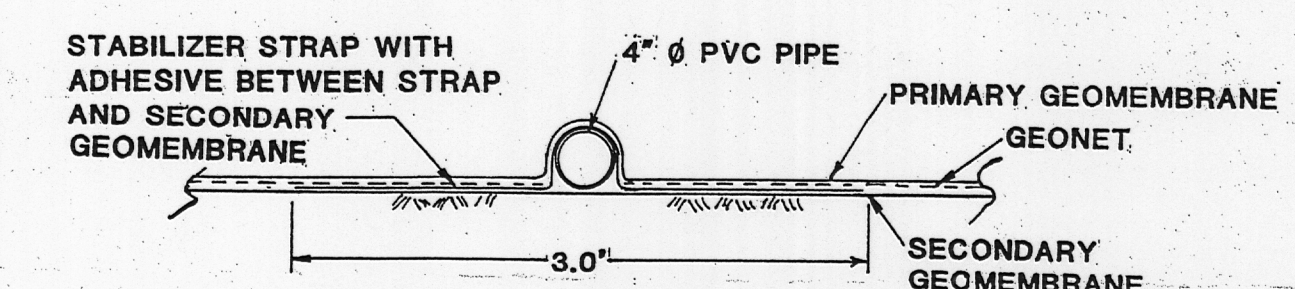
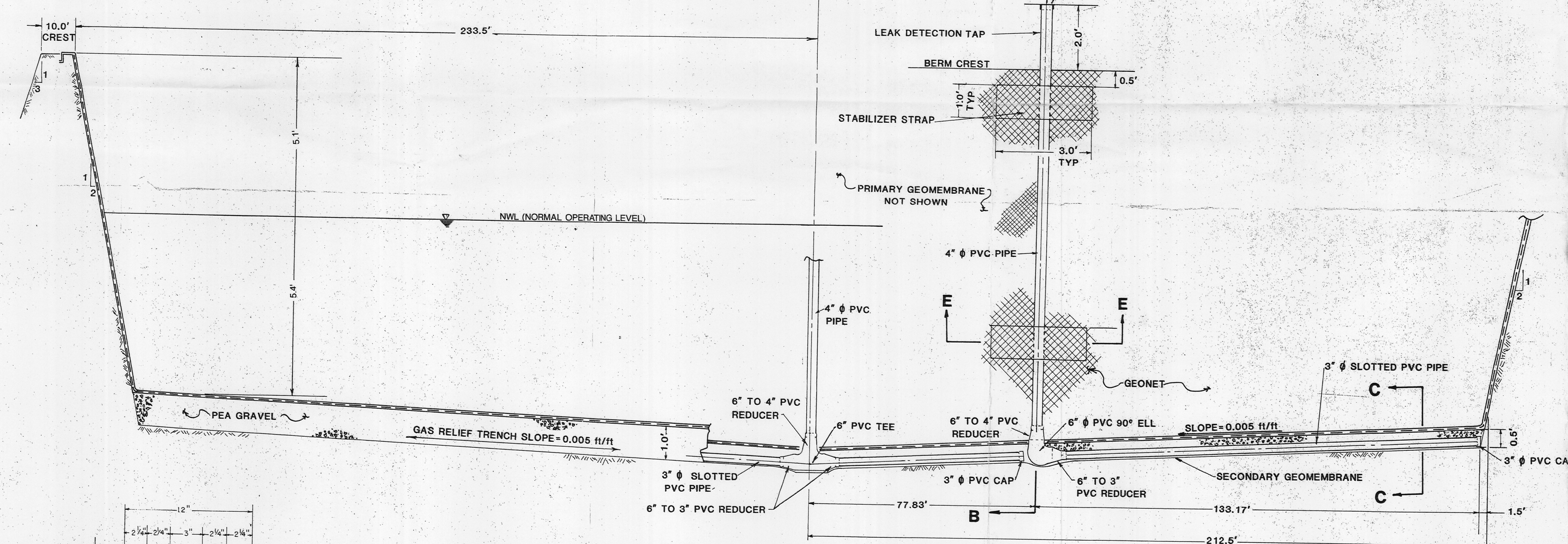


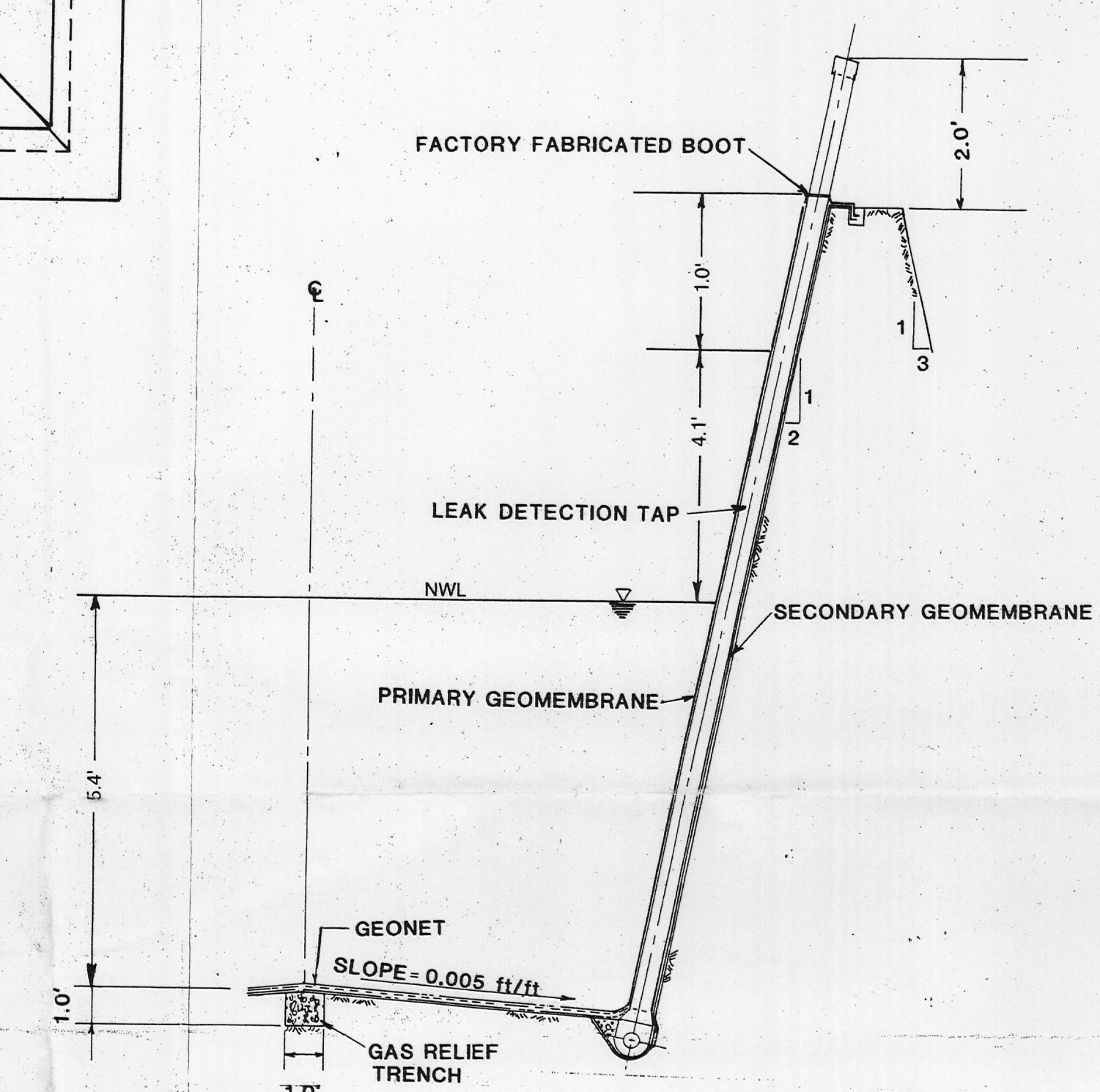
**TYPICAL EVAPORATION POND
PLAN VIEW**
SCALE: 1" = 20'



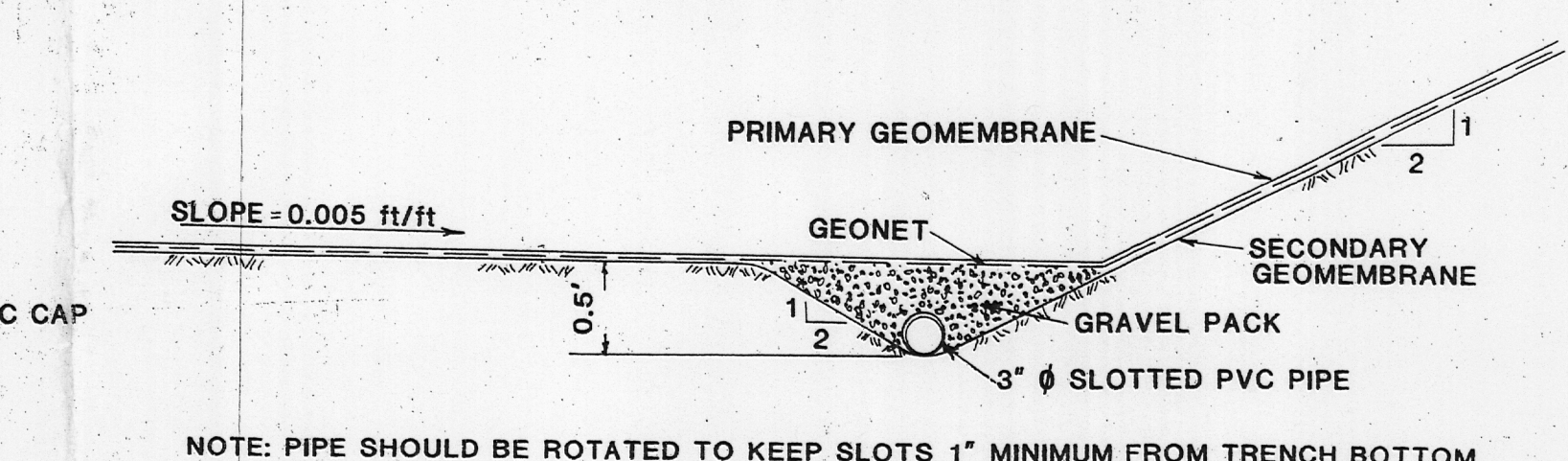
ENLARGED SECTION E-E



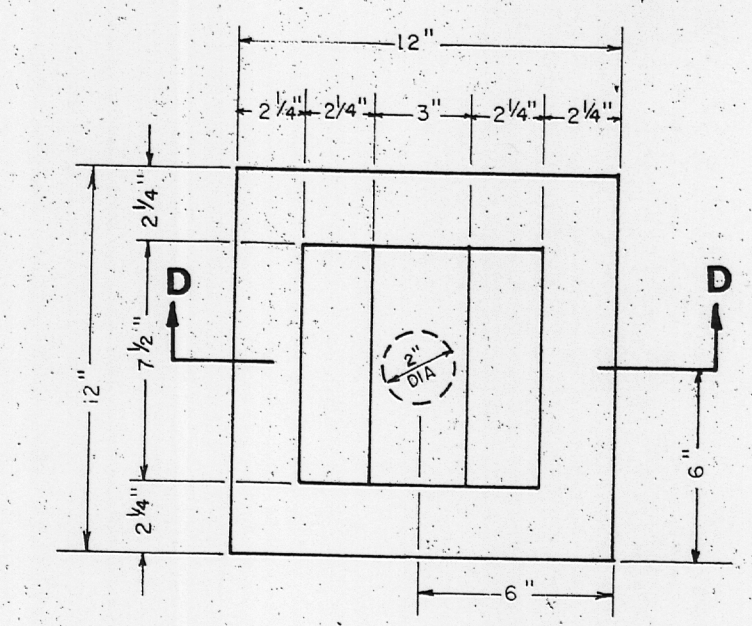
SECTION A-A
SCALE: HOR. 1" = 20', VERT. 1" = 2'



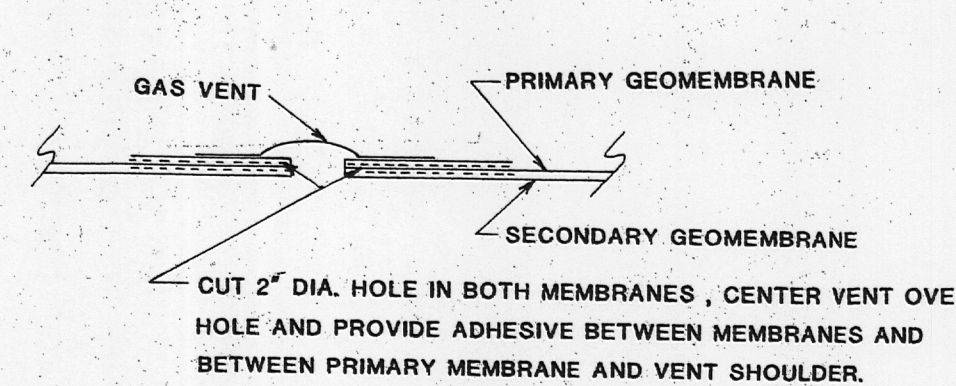
SECTION B-B
SCALE: HOR. 1" = 20', VERT. 1" = 2'



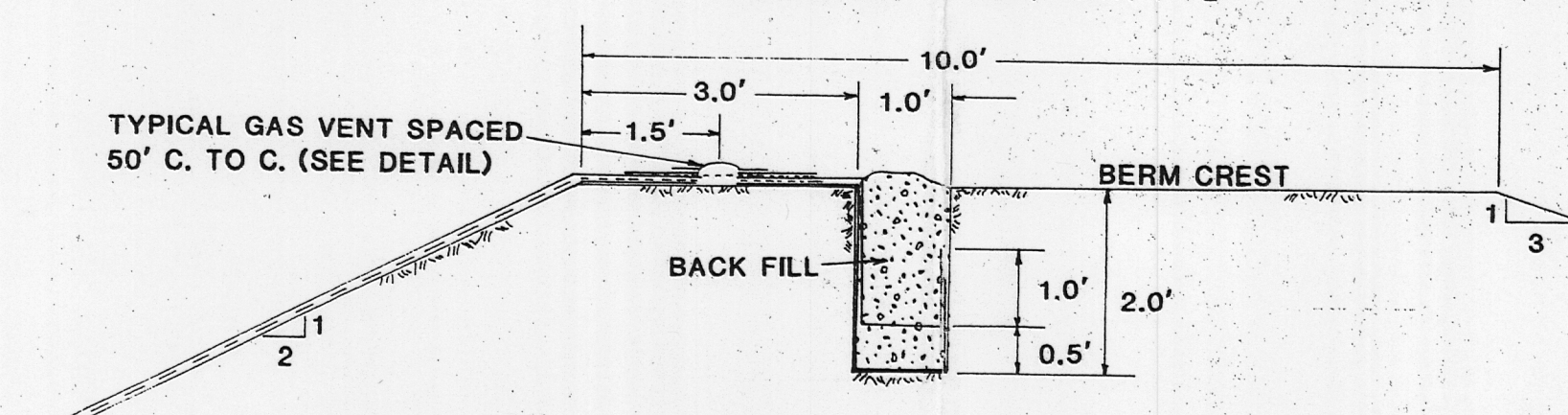
ENLARGED SECTION C-C
SCALE: 1" = 1'



TYPICAL GAS VENT DETAIL
SCALE: 1" = 6"



SECTION D-D

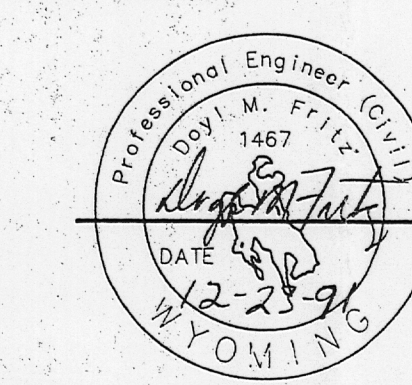


LINER TERMINATION DETAIL
SCALE: 1" = 2'

CERTIFICATE OF ENGINEER

STATE OF WYOMING) SS
COUNTY OF SHERIDAN)

I, Doyle M. Fritz, hereby certify that these drawings were prepared by myself or under my direct supervision based on topographic maps supplied by Pathfinder Mines Corporation and that they correctly represent the facilities described in the accompanying application which are designed to meet the requirements of the Wyoming Environmental Quality Act and its regulations.



SHEET 5 OF 5

POWER RESOURCES, INC.

**CONSTRUCTION DETAILS,
OPTION B
(DOUBLE LINER OPTION)**

REVISIONS	Date	By

WVC ENGINEERING
A DIVISION OF WESTERN WATER CONSULTANTS, INC.
• CIVIL - MINING - CONSTRUCTION ENGINEERING •

1949 SUGARLAND DR., SUITE 134 SHERIDAN, WY. 82801 (307) 672-0791

P.O. BOX 4128 LARAMIE, WY. 82071 (307) 742-0031

701 ANTLER DR. CASPER, WY. 82601 (307) 473-2707

Drawn By: KR Checked By: DMF Date: 12-20-97 Scale: AS SHOWN