

# Peach Bottom Atomic Power Station Annual Assessment Meeting

---

Reactor Oversight Program - CY 2005



Nuclear Regulatory Commission - Region I  
King of Prussia, Pennsylvania  
April 26, 2006

# Purpose of Today's Meeting

- A public forum for discussion of the licensee's performance
- NRC will address the licensee performance identified during the assessment period
- Exelon will respond to the information in the letter and inform the NRC of new or existing programs to maintain or improve their performance

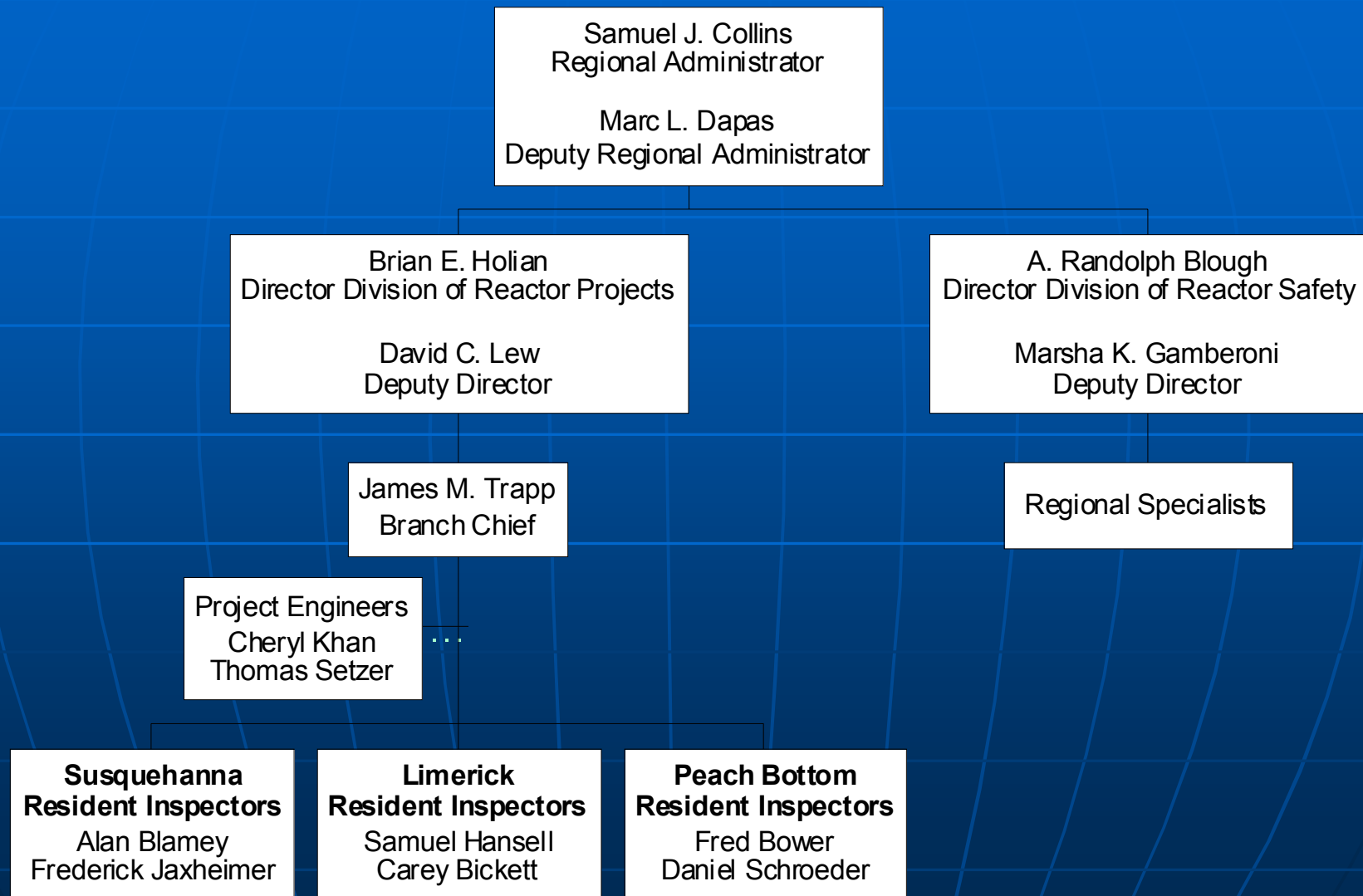
# Agenda

- Introduction
- Review of Reactor Oversight Process
- National Summary of Plant Performance
- Discussion of Plant Performance Results
- Licensee Response and Remarks
- NRC Closing Remarks
- Break
- NRC available to address public questions

# NRC Representatives

- James Trapp, Branch Chief
  - (610) 337-5186
- Fred Bower, Senior Resident Inspector
  - (717) 456-7614
- Daniel Schroeder, Resident Inspector
  - (717) 456-7614

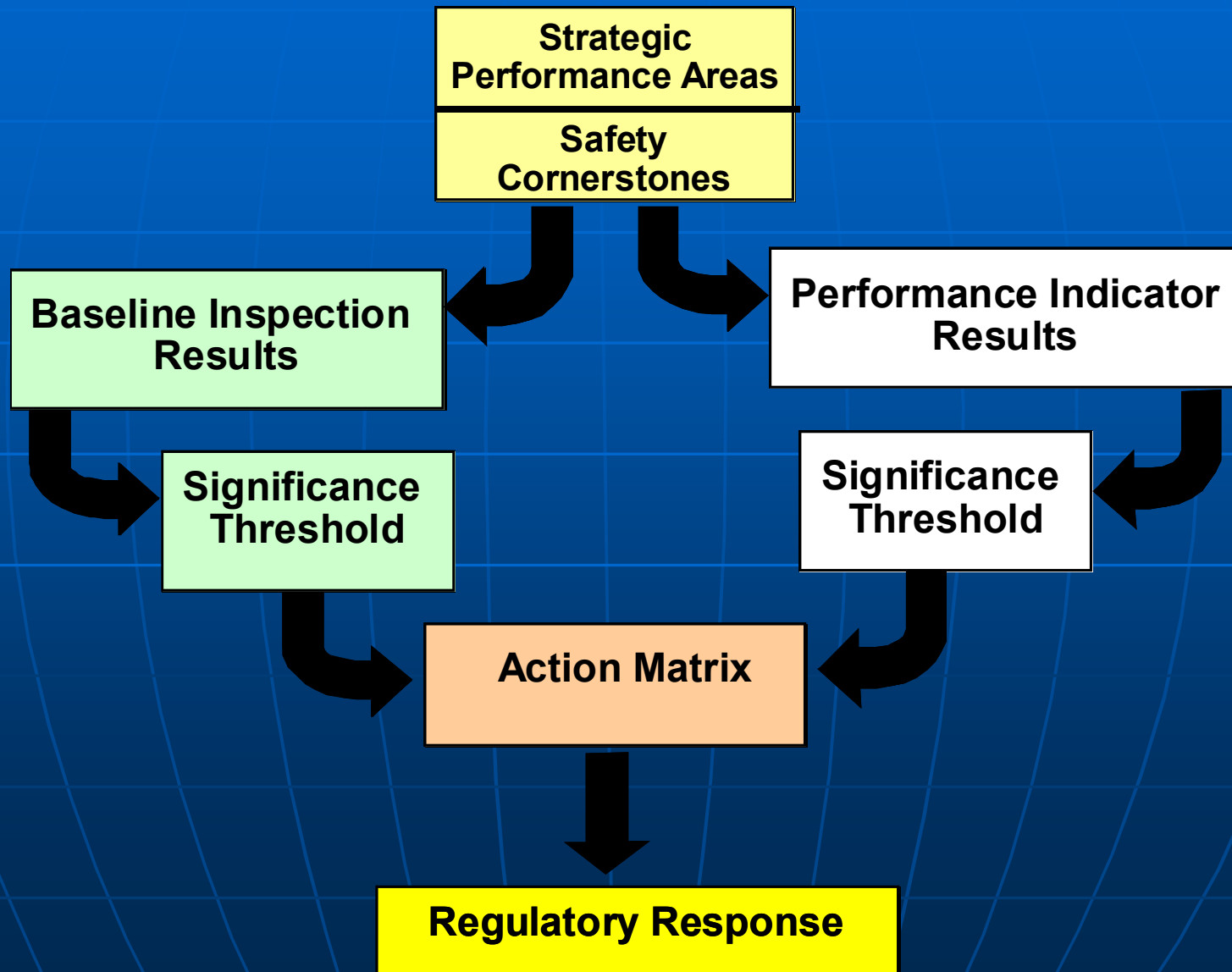
# Region I Organization



# NRC Performance Goals

- Safety: Ensure protection of the public health and safety and the environment
- Security: Ensure the secure use and management of radioactive materials
- Openness: Ensure openness in our regulatory process
- Effectiveness: Ensure that NRC actions are effective, efficient, realistic, and timely
- Management: Ensure excellence in agency management to carry out the NRC' strategic objective

# Reactor Oversight Process



# Examples of Baseline Inspections

- Equipment Alignment ~80 hrs/yr
- Triennial Fire Protection ~200 hrs every 3 yrs
- Operator Response ~125 hrs/yr
- Emergency Preparedness ~80 hrs/yr
- Rad Release Controls ~110 hrs every 2 yrs
- Worker Radiation Protection ~90 hrs/yr
- Corrective Action Program ~250 hrs every 2 yrs
- Corrective Action Case Reviews ~60 hrs/yr



# Significance Threshold

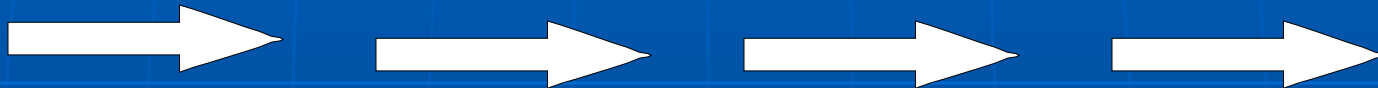
## Performance Indicators

<b>Green:</b>	Baseline Inspection
<b>White:</b>	Increased NRC oversight
<b>Yellow:</b>	Requires more NRC oversight
<b>Red:</b>	Requires more NRC oversight

## Inspection Findings

<b>Green:</b>	Very low safety issue
<b>White:</b>	Low to moderate safety issue
<b>Yellow:</b>	Substantial safety issue
<b>Red:</b>	High safety issue

# Action Matrix Concept



**Increasing Safety Significance**

**Increasing NRC Inspection Efforts**

**Increasing NRC/Licensee Management Involvement**

**Increasing Regulatory Actions**

# National Summary of Plant Performance

Status at End of CY 2005

Licensee Response	84
Regulatory Response	12
Degraded Cornerstone	4
Multiple/Repetitive Degraded Cornerstone	3
Unacceptable	0
<u>Total</u>	<u>103</u>

# National Summary

- Performance Indicator Results (at end of CY 2005)

▶ Green	1850
▶ White	4
▶ Yellow	0
▶ Red	0

- Total Inspection Findings (CY 2005)

▶ Green	849
▶ White	10
▶ Yellow	1
▶ Red	0

# Peach Bottom Inspection Activities

(Jan 1 - Dec 31, 2005)

- 5359 hours of inspection related activities
- 2 resident inspectors assigned to the site
- ~20 regional inspector visits
  - Included two team inspections (PI&R, Mods & 50.59)
- Unit 3 refueling outage
  - September – October 2005

# Peach Bottom Unit 2 Assessment Results

(Jan 1 – Dec 31, 2005)

- Operated safely throughout the Assessment Period
- Licensee response column of the Action Matrix for the fourth quarter of 2005 (cornerstone objectives fully met)
- Regulatory response column of the Action Matrix for the first three quarters of 2005 (cornerstone objectives met with minimal reduction in safety margin)
- Inspection Findings
  - 6 findings of very low safety significance (Green)
  - 4 of the 6 findings were common to both units
- NRC will conduct baseline inspections during the remainder of the cycle (January 1 – December 31, 2006)

# Peach Bottom Unit 3 Assessment Results

(Jan 1 – Dec 31, 2005)

- Operated safely throughout the Assessment Period
- Licensee response column of the Action Matrix for all of 2005 (cornerstone objectives fully met)
- Inspection Findings
  - 7 findings of very low safety significance (Green)
  - 4 of the 7 findings were common to both units
- NRC will conduct baseline inspections during remainder of the cycle (January 1 – December 31, 2006)

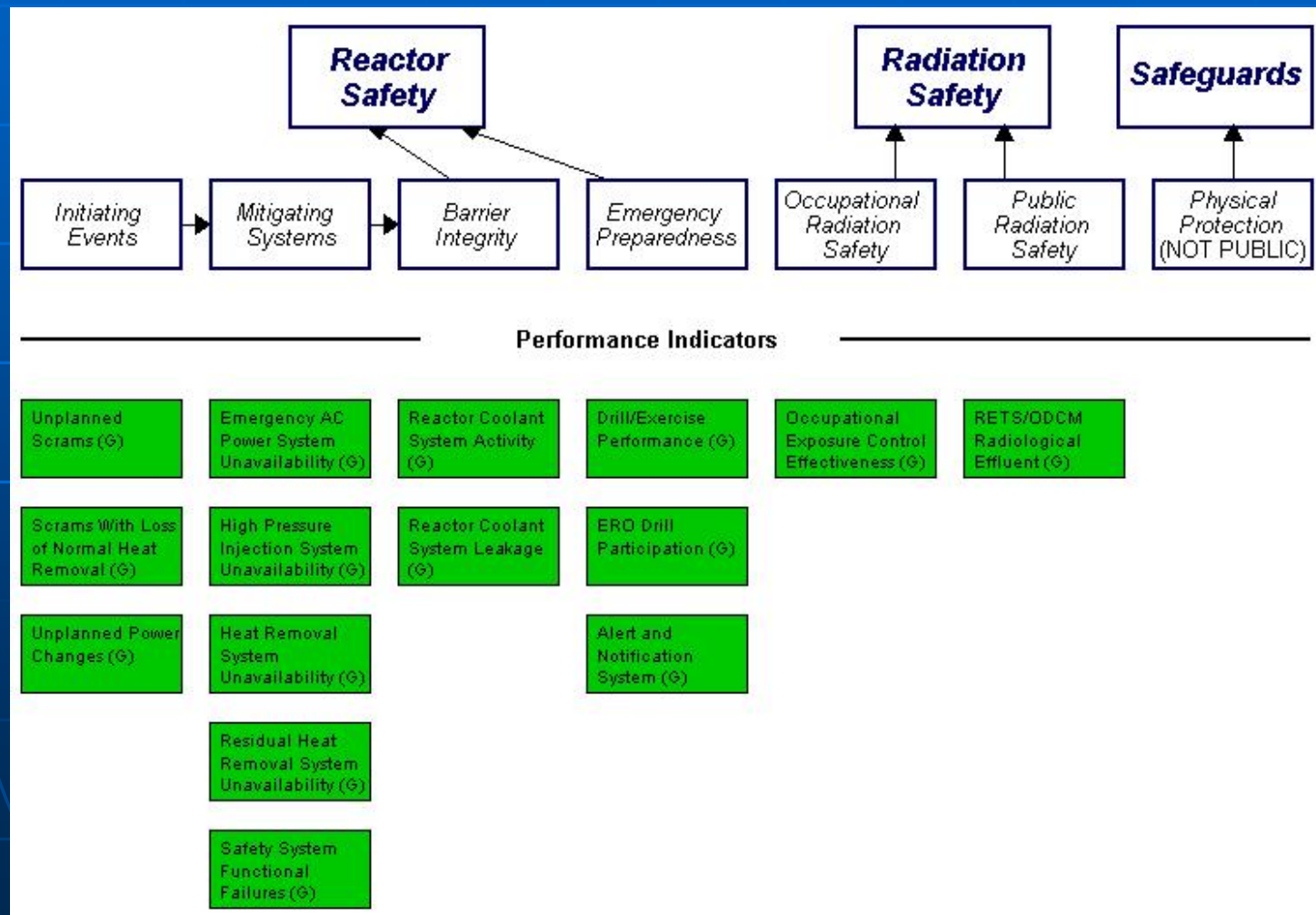
## Unit 2 – Safety Significant Performance Indicator (PI)

- 1 white PI initiated in fourth quarter 2004 for exceeding the threshold for number of Scrams with Loss of Normal Heat Removal (Initiating Events cornerstone)
- In December 2005, a supplemental inspection determined Exelon adequately addressed the problem identification and problem resolution attributes of the supplemental inspection procedure and no findings of significance were identified.
- The white PI did not affect the fourth quarter 2005 assessment.



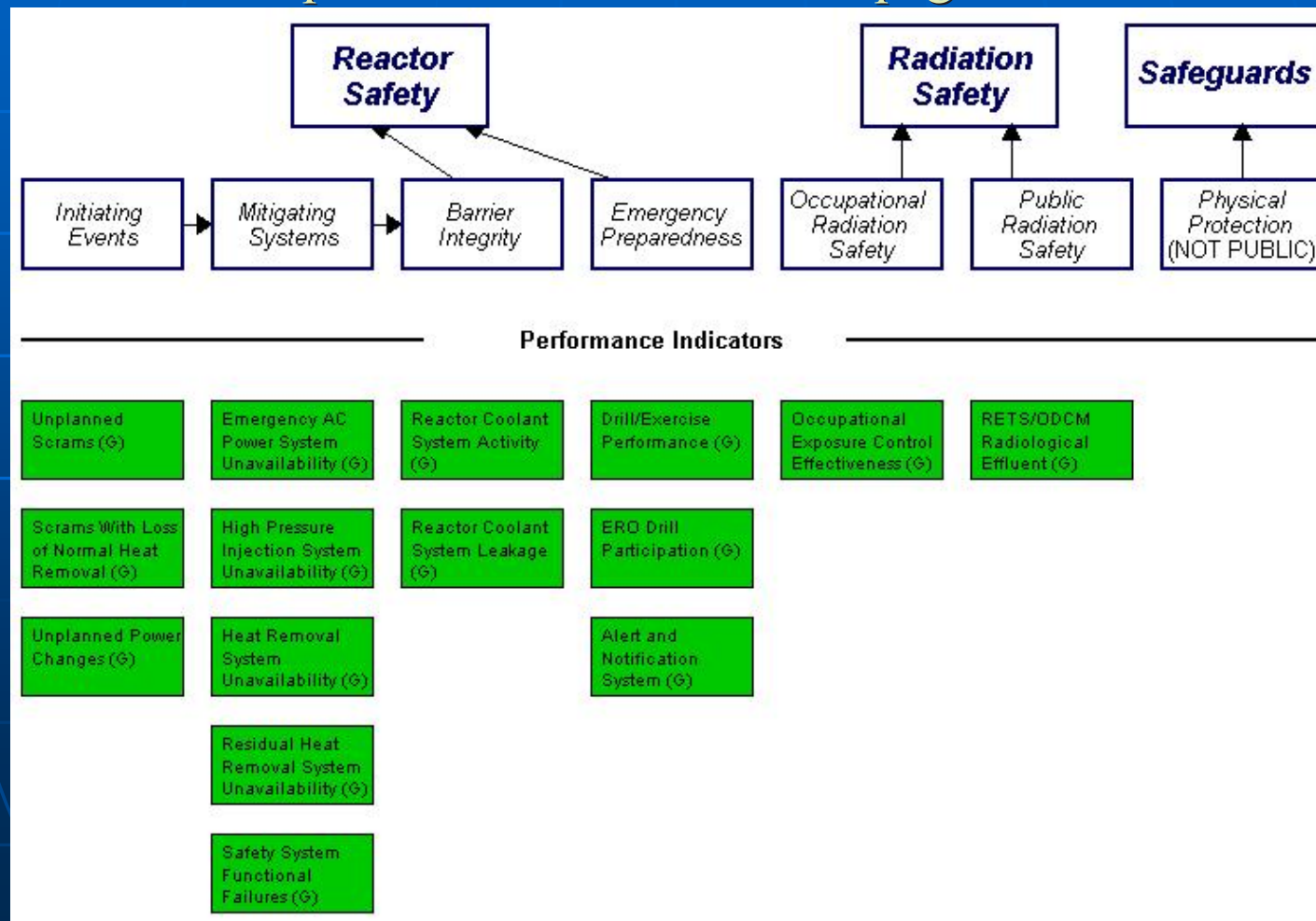
# Unit 2 – 4Q Performance Indicators

- [www.NRC.GOV/NRR/oversight/assess/index.html](http://www.NRC.GOV/NRR/oversight/assess/index.html)
  - click on plant name on left side of page



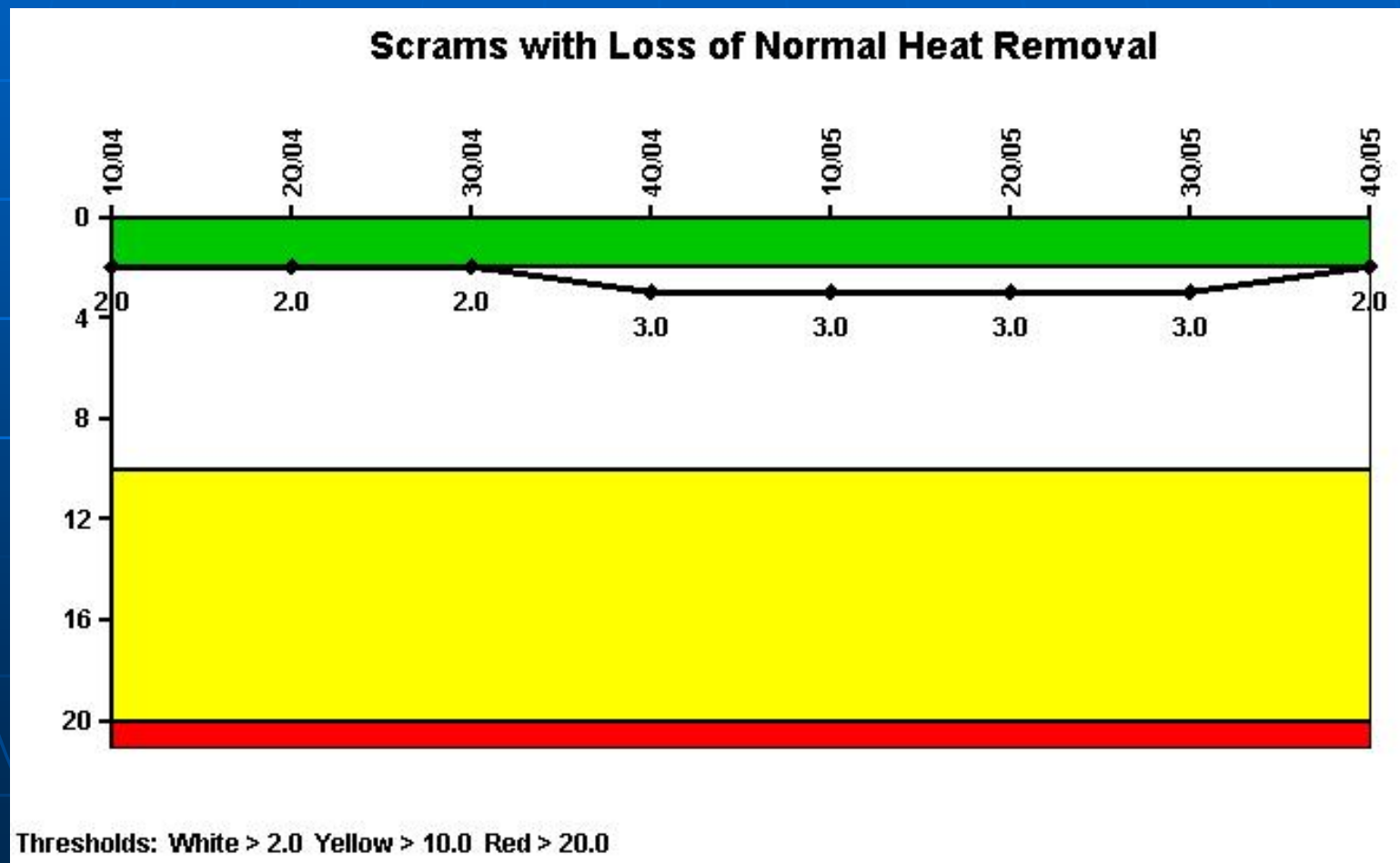
# Unit 3 – 4Q Performance Indicators

- [www.NRC.GOV/NRR/oversight/assess/index.html](http://www.NRC.GOV/NRR/oversight/assess/index.html)
  - click on plant name on left side of page



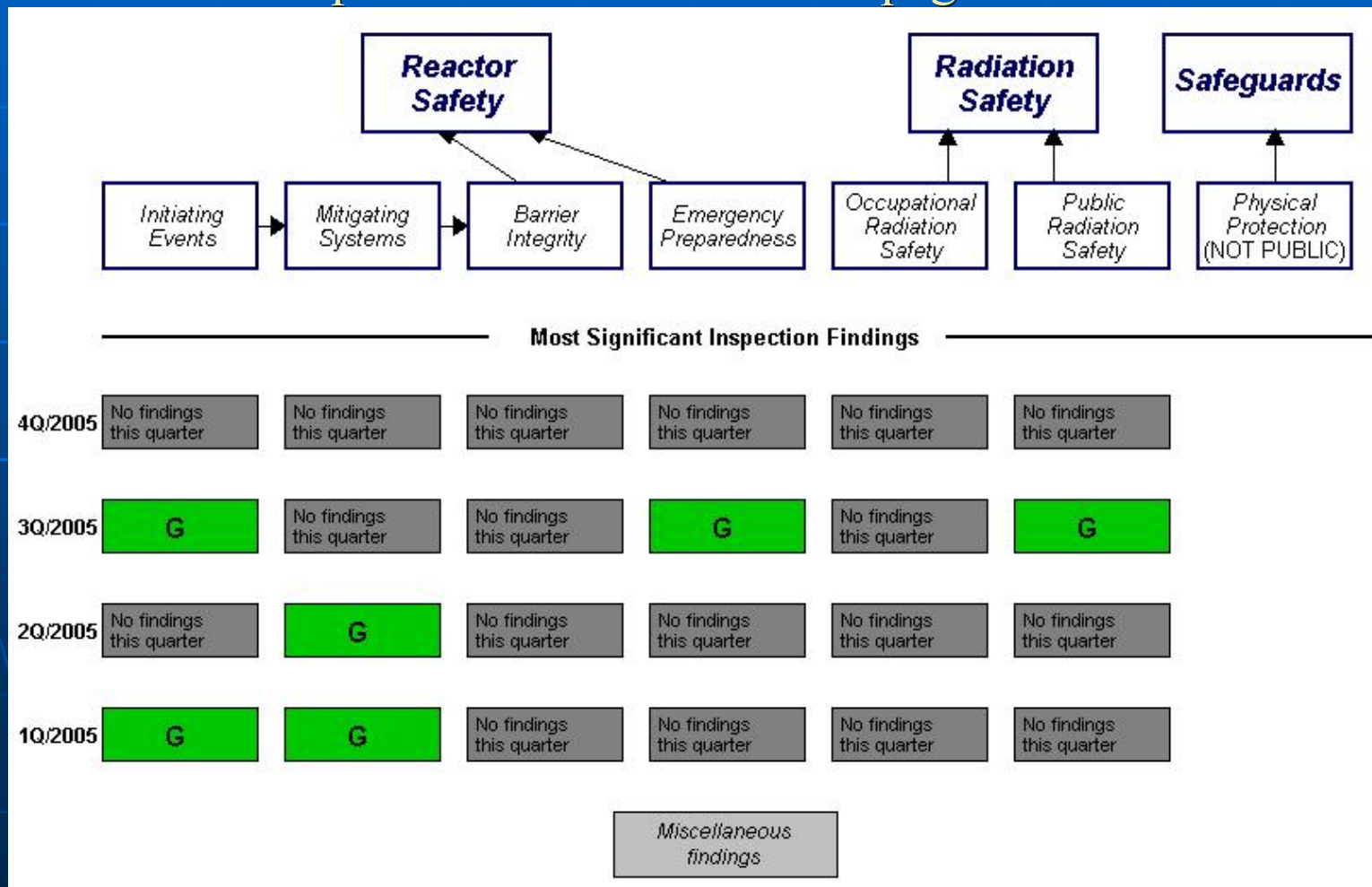
# Performance Indicator (PI) Example

- [www.NRC.GOV/NRR/oversight/assess/index.html](http://www.NRC.GOV/NRR/oversight/assess/index.html)
  - click on plant name on left side of page, then on PI



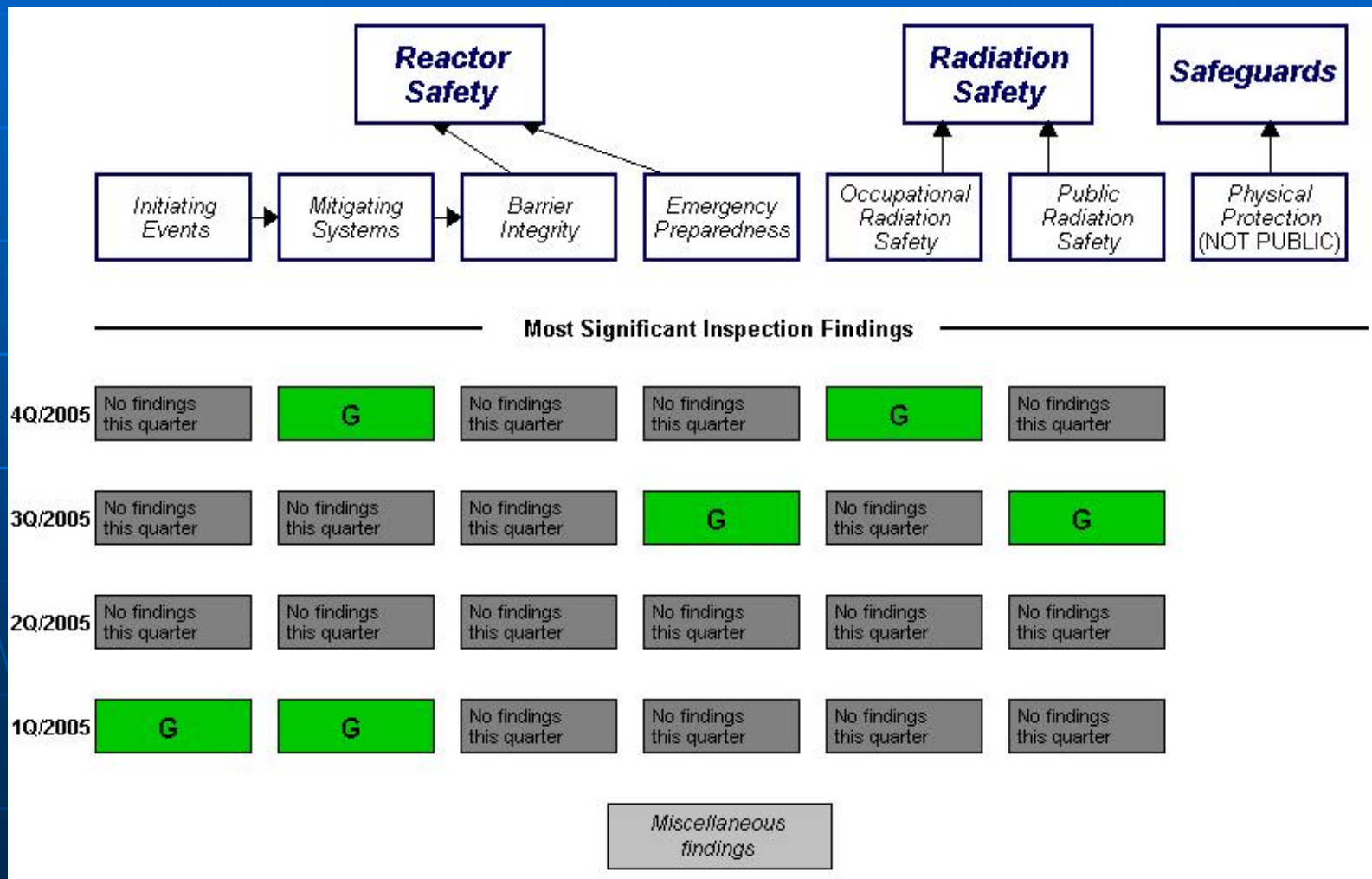
# Unit 2 – Inspection Results

- [www.NRC.GOV/NRR/oversight/assess/index.html](http://www.NRC.GOV/NRR/oversight/assess/index.html)  
-click on plant name on left side of page



# Unit 3 – Inspection Results

- [www.NRC.GOV/NRR/oversight/assess/index.html](http://www.NRC.GOV/NRR/oversight/assess/index.html)  
-click on plant name on left side of page



# Peach Bottom

## Annual Assessment Summary

January 1 – December 31, 2005

- Exelon operated Peach Bottom Units 2 & 3 in a manner that protected public health and safety
- Licensee response column of the Action Matrix (All cornerstone objectives were fully met)
- NRC plans baseline inspections at Peach Bottom for the remainder of the 2006 assessment period

# Licensee Response and Remarks

---



# Contacting the NRC

- Report an emergency
  - (301) 816-5100 (call collect)
- Report a safety concern:
  - (800) 695-7403
  - Allegation@nrc.gov
- General information or questions
  - [www.nrc.gov](http://www.nrc.gov)
  - Select “What We Do” for Public Affairs



# Reference Sources

- Reactor Oversight Process

- <http://www.nrc.gov/NRR/OVERSIGHT/ASSESS/index.html>

- Public Electronic Reading Room

- <http://www.nrc.gov/reading-rm.html>

- Public Document Room

- 1-800-397-4209 (Toll Free)