

Limerick Generating Station Annual Assessment Meeting

Reactor Oversight Program - CY 2005



Nuclear Regulatory Commission - Region I

King of Prussia, Pennsylvania

April 20, 2006

Purpose of Today's Meeting

- A public forum for discussion of the licensee's performance
- NRC will address the licensee performance identified during the assessment period
- Exelon will respond to the information in the letter and inform the NRC of new or existing programs to maintain or improve their performance

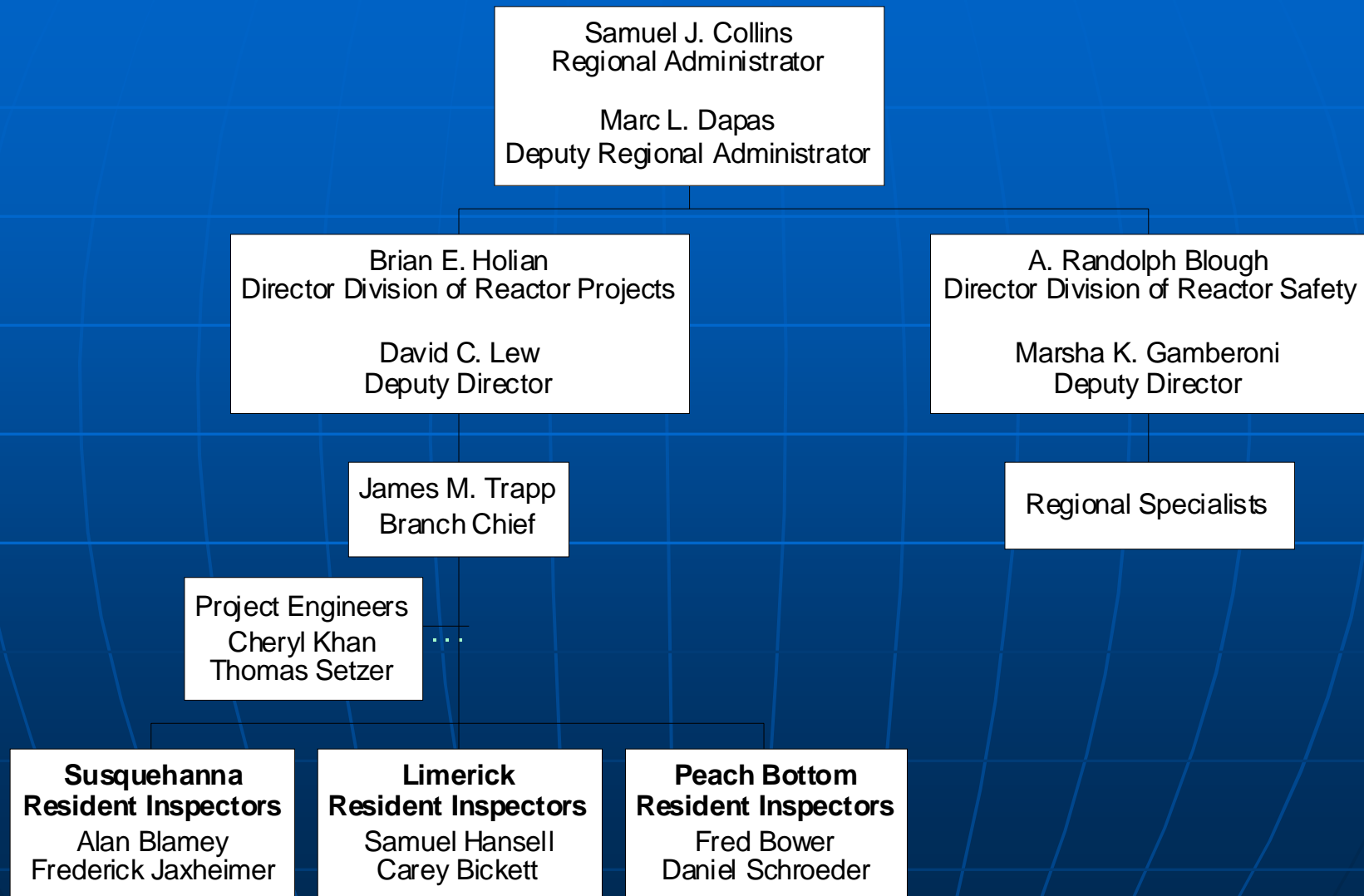
Agenda

- Introduction
- Review of Reactor Oversight Process
- National Summary of Plant Performance
- Discussion of Plant Performance Results
- Licensee Response and Remarks
- NRC Closing Remarks
- Break
- NRC available to address public questions

NRC Representatives

- James Trapp, Branch Chief
 - (610) 337-5186
- Samuel Hansell, Senior Resident Inspector
 - (610) 327-1344
- Carey Bickett, Resident Inspector
 - (610) 327-1344

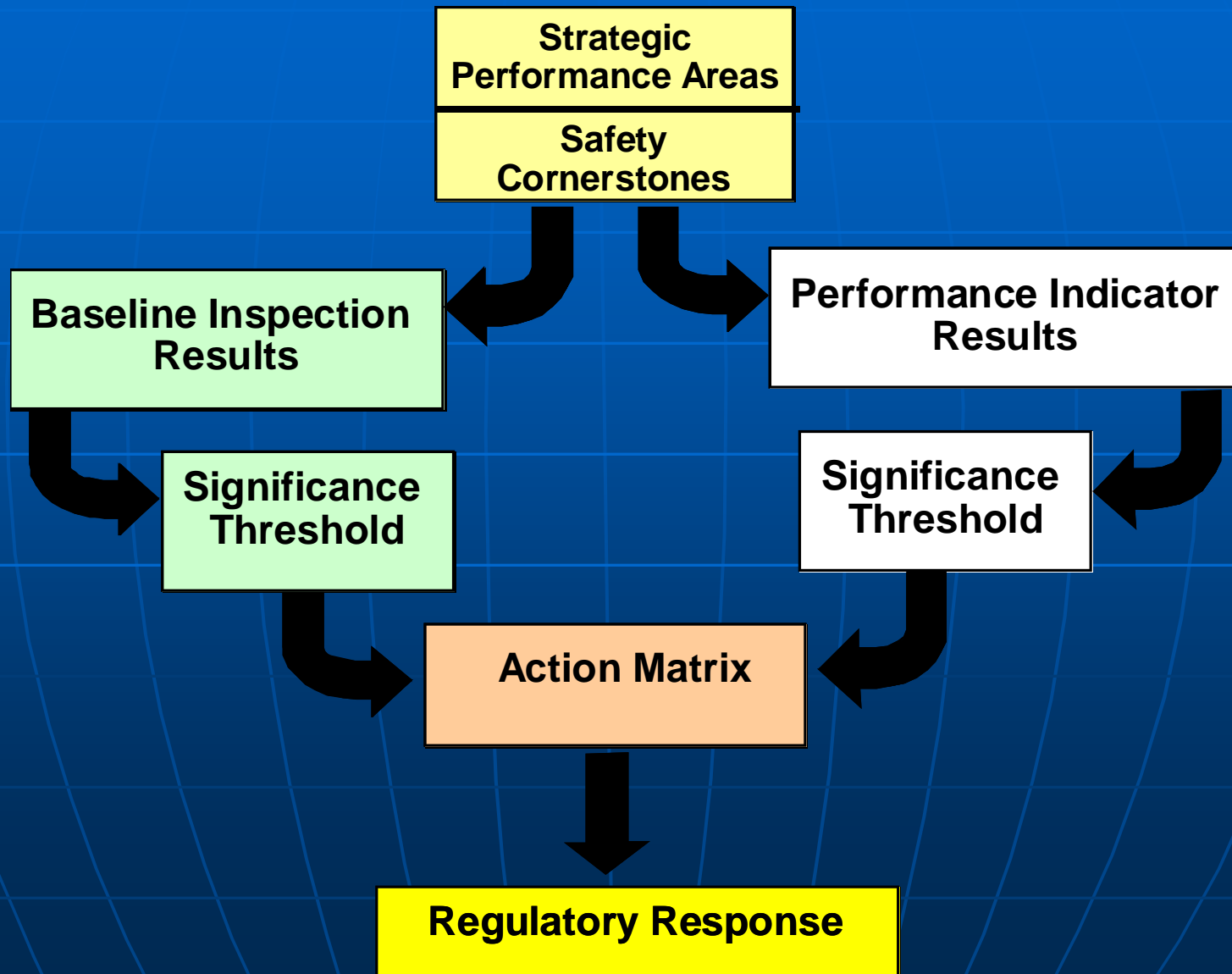
Region I Organization



NRC Performance Goals

- Safety: Ensure protection of the public health and safety and the environment
- Security: Ensure the secure use and management of radioactive materials
- Openness: Ensure openness in our regulatory process
- Effectiveness: Ensure that NRC actions are effective, efficient, realistic, and timely
- Management: Ensure excellence in agency management to carry out the NRC' strategic objective

Reactor Oversight Process



Examples of Baseline Inspections

- Equipment Alignment ~80 hrs/yr
- Triennial Fire Protection ~200 hrs every 3 yrs
- Operator Response ~125 hrs/yr
- Emergency Preparedness ~80 hrs/yr
- Rad Release Controls ~110 hrs every 2 yrs
- Worker Radiation Protection ~90 hrs/yr
- Corrective Action Program ~250 hrs every 2 yrs
- Corrective Action Case Reviews ~60 hrs/yr

Significance Threshold

Performance Indicators

| | |
|----------------|-----------------------------|
| Green: | Baseline Inspection |
| White: | Increased NRC oversight |
| Yellow: | Requires more NRC oversight |
| Red: | Requires more NRC oversight |

Inspection Findings

| | |
|----------------|------------------------------|
| Green: | Very low safety issue |
| White: | Low to moderate safety issue |
| Yellow: | Substantial safety issue |
| Red: | High safety issue |

Action Matrix Concept



Increasing Safety Significance

Increasing NRC Inspection Efforts

Increasing NRC/Licensee Management Involvement

Increasing Regulatory Actions

National Summary of Plant Performance

Status at End of CY 2005

| | |
|--|------------|
| Licensee Response | 84 |
| Regulatory Response | 12 |
| Degraded Cornerstone | 4 |
| Multiple/Repetitive Degraded Cornerstone | 3 |
| Unacceptable | 0 |
| <u>Total</u> | <u>103</u> |

National Summary

- Performance Indicator Results (at end of CY 2005)

| | |
|----------|------|
| ▶ Green | 1850 |
| ▶ White | 4 |
| ▶ Yellow | 0 |
| ▶ Red | 0 |

- Total Inspection Findings (CY 2005)

| | |
|----------|-----|
| ▶ Green | 849 |
| ▶ White | 10 |
| ▶ Yellow | 1 |
| ▶ Red | 0 |

Limerick Inspection Activities

(Jan 1 - Dec 31, 2005)

- 4733 hours of inspection related activities
- 2 resident inspectors assigned to the site
- ~11 regional inspector visits
 - Included two team inspections (SSDI, EP Exercise Evaluation)
- Unit 2 Refueling Outage
 - February – March 2005

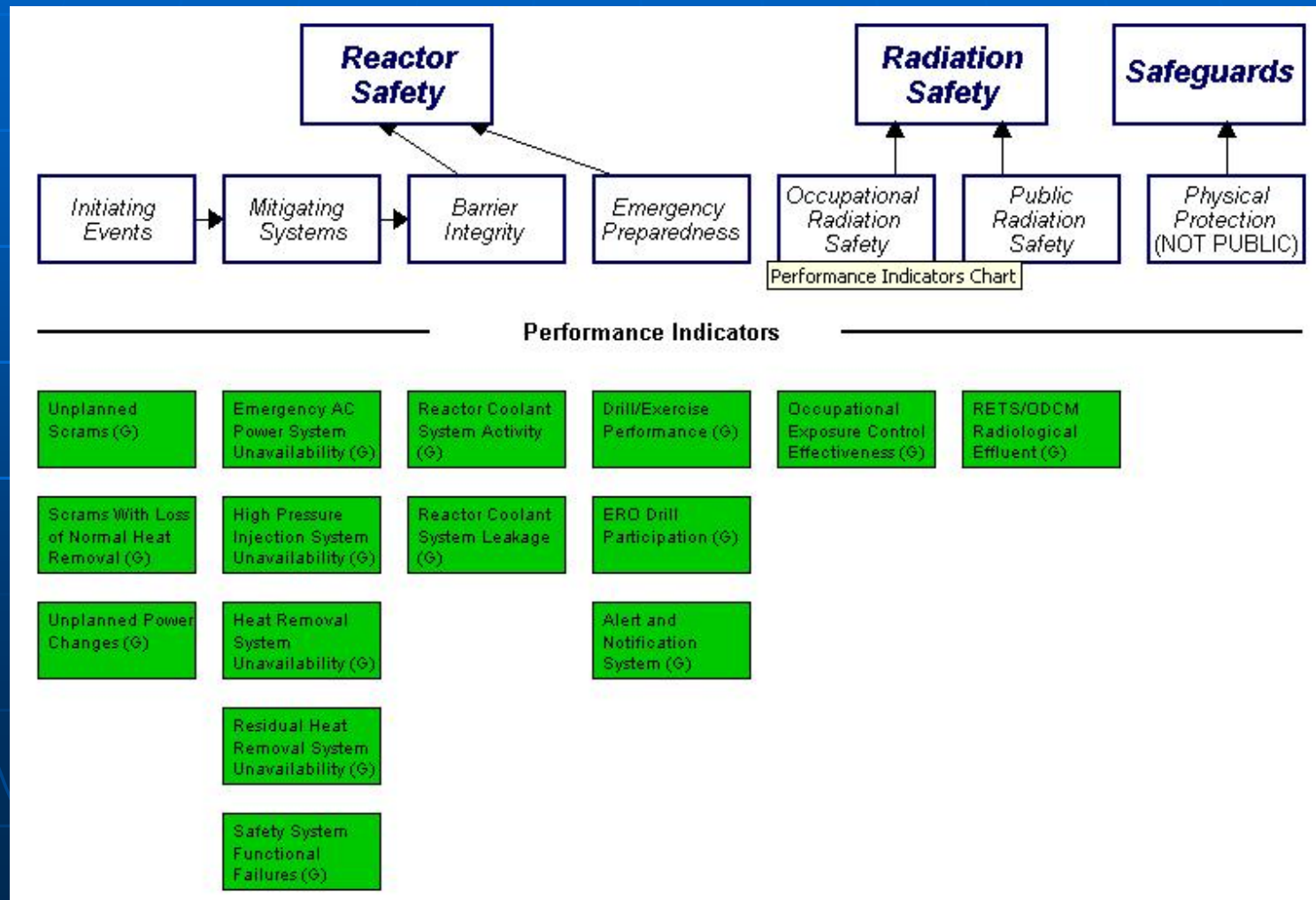
Limerick Units 1 & 2 Assessment Results

(Jan 1 – Dec 31, 2005)

- Operated safely throughout the Assessment Period
- Licensee response column of the Action Matrix for all of 2005 (cornerstone objectives fully met)
- Inspection Findings
 - 4 findings of very low safety significance (**Green**)
 - 3 findings were common to both units
 - 1 finding associated with Unit 2
- NRC will conduct baseline inspections during the remainder of the cycle

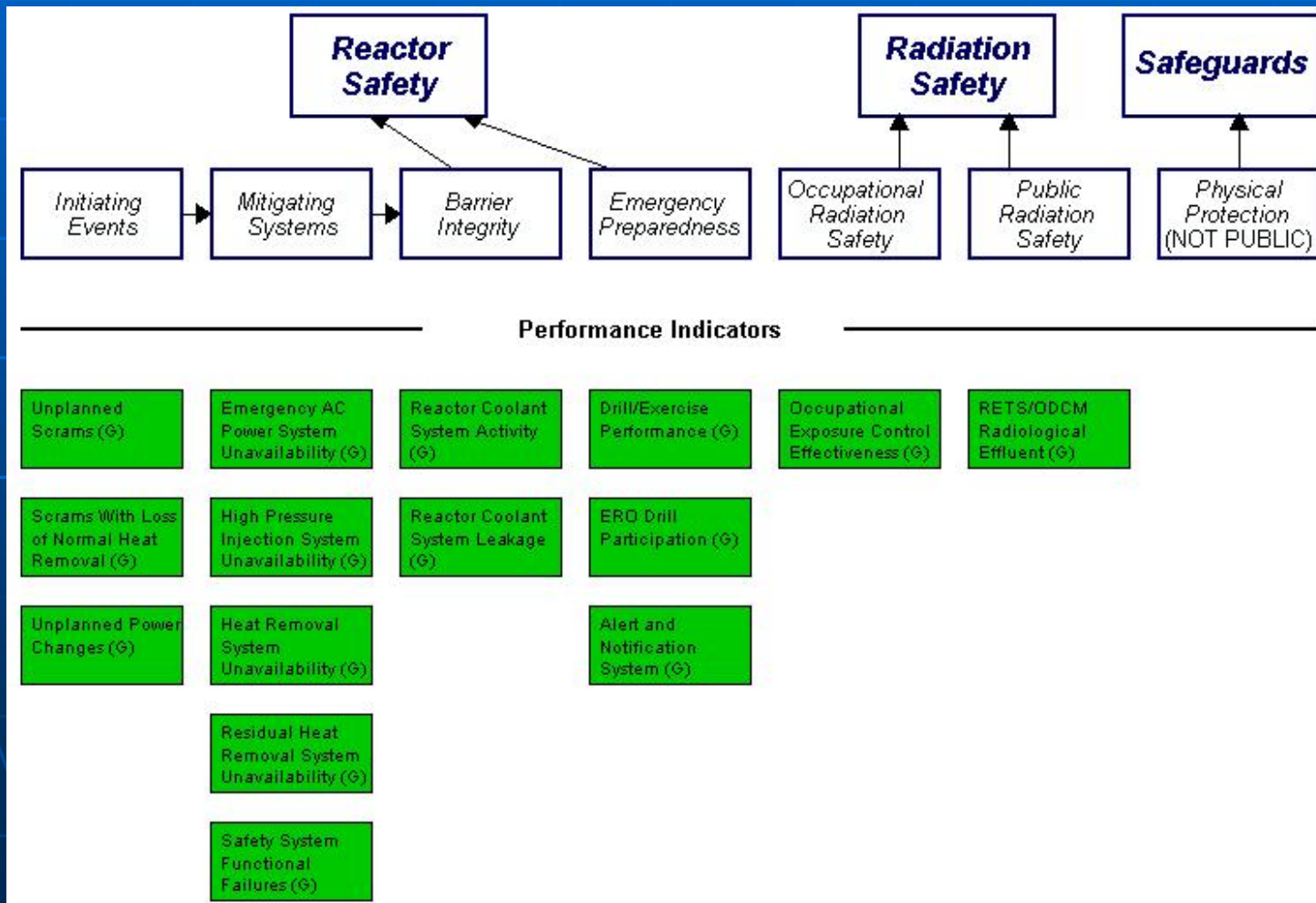
Unit 1 – 4Q Performance Indicators

- www.NRC.GOV/NRR/oversight/assess/index.html
- click on plant name on left side of page



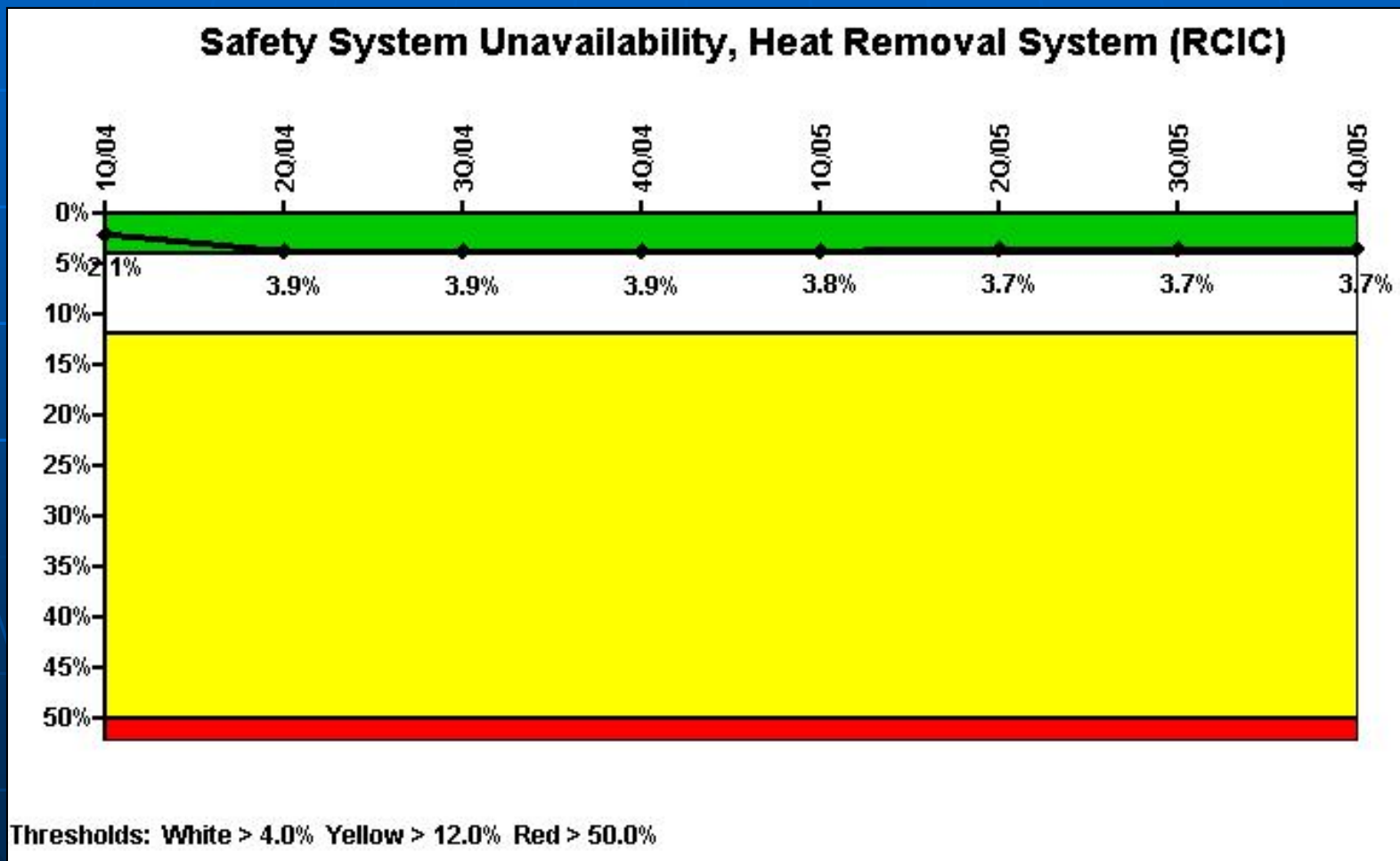
Unit 2 – 4Q Performance Indicators

- www.NRC.GOV/NRR/oversight/assess/index.html
- click on plant name on left side of page



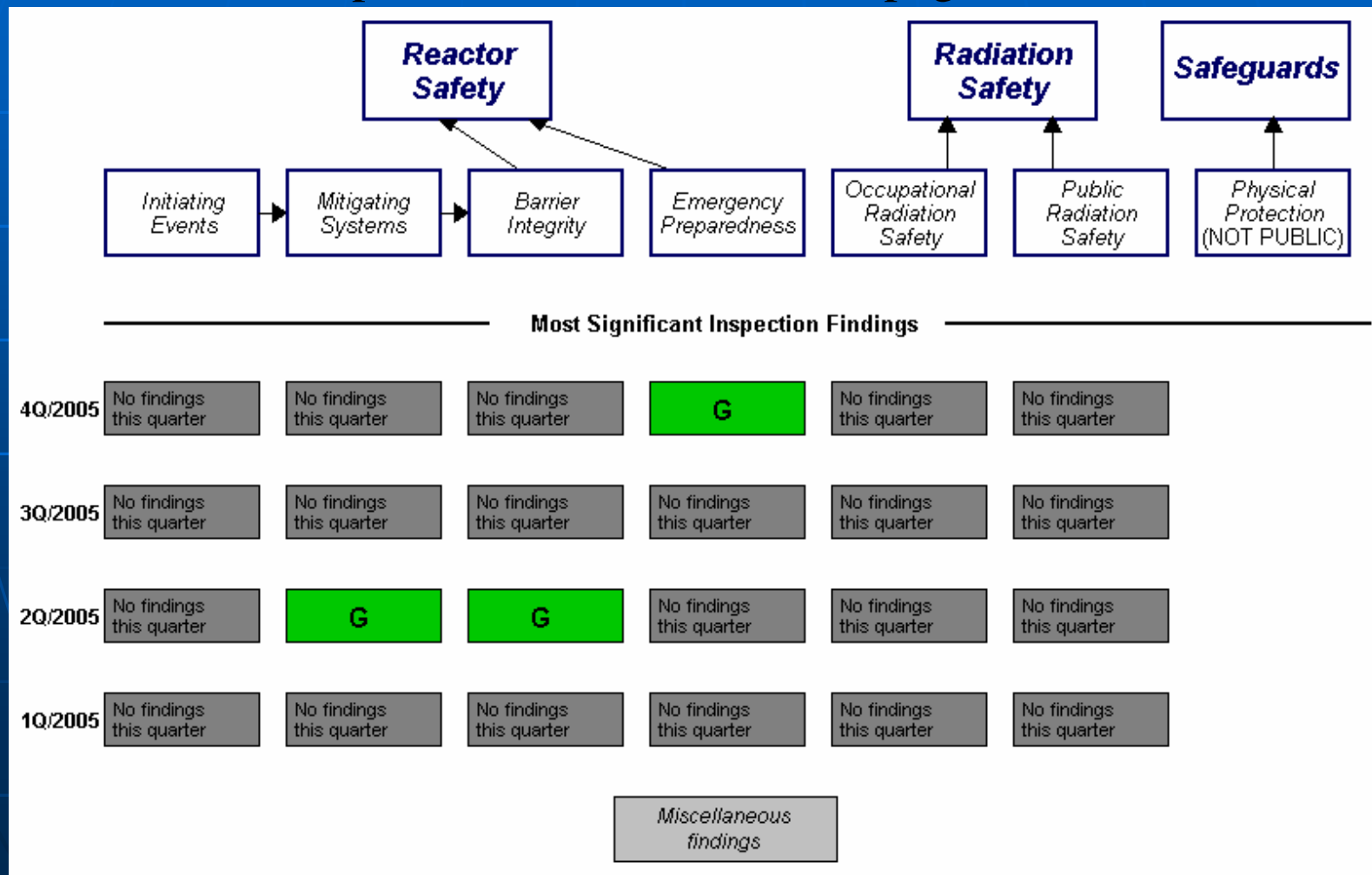
Performance Indicator (PI) Example

- www.NRC.GOV/NRR/oversight/assess/index.html
 - click on plant name on left side of page, then on PI



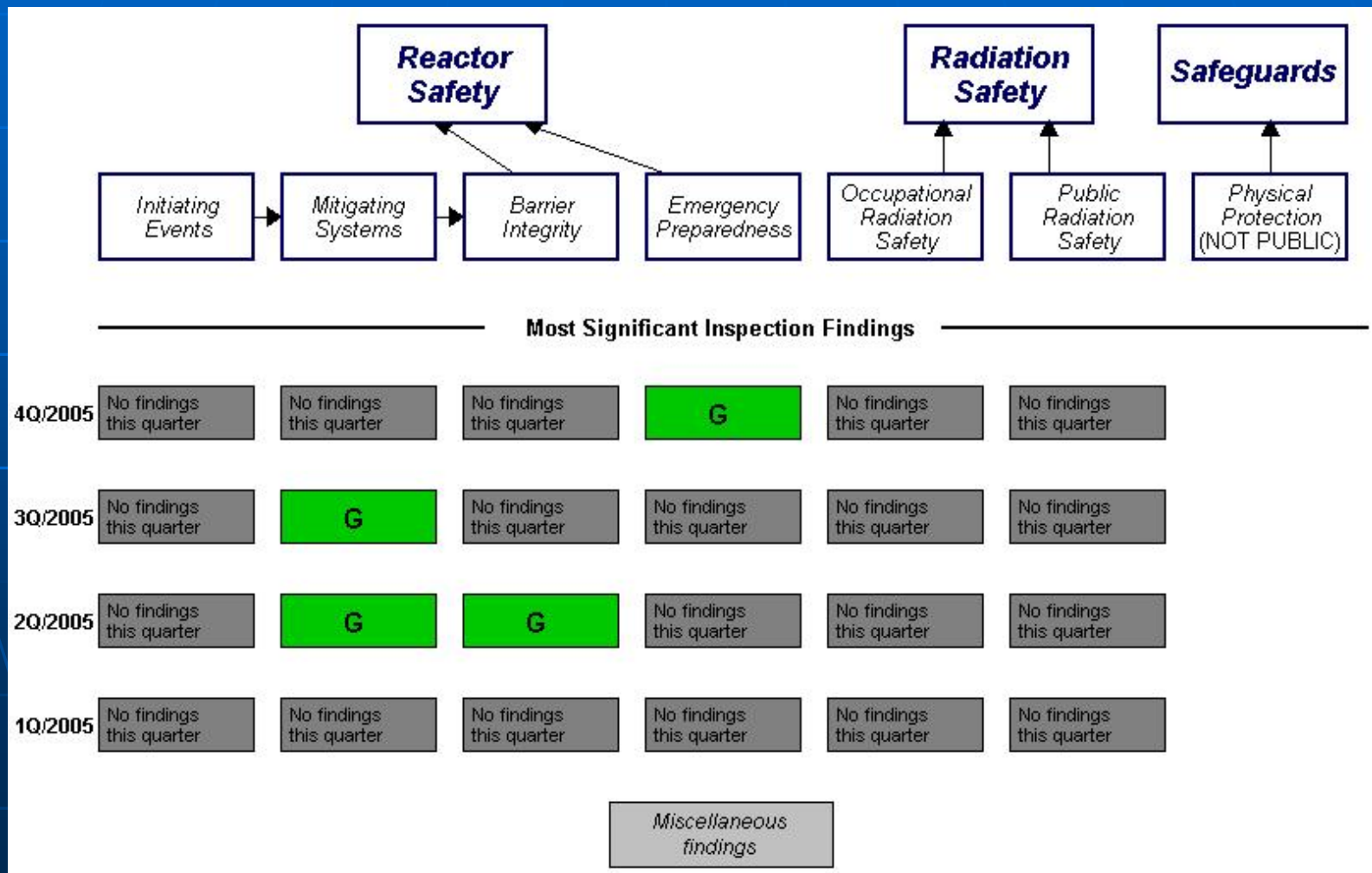
Unit 1 – Inspection Results

- www.NRC.GOV/NRR/oversight/assess/index.html
-click on plant name on left side of page



Unit 2 – Inspection Results

- www.NRC.GOV/NRR/oversight/assess/index.html
-click on plant name on left side of page



Limerick

Annual Assessment Summary

January 1 – December 31, 2005

- Exelon operated Limerick Units 1 & 2 in a manner that protected public health and safety
- Licensee response column of the Action Matrix (All cornerstone objectives were fully met)
- NRC plans baseline inspections at Limerick for the remainder of the 2006 assessment period

Licensee Response and Remarks

Contacting the NRC

- Report an emergency
 - (301) 816-5100 (call collect)
- Report a safety concern:
 - (800) 695-7403
 - Allegation@nrc.gov
- General information or questions
 - www.nrc.gov
 - Select “What We Do” for Public Affairs

Reference Sources

- Reactor Oversight Process

- <http://www.nrc.gov/NRR/OVERSIGHT/ASSESS/index.html>

- Public Electronic Reading Room

- <http://www.nrc.gov/reading-rm.html>

- Public Document Room

- 1-800-397-4209 (Toll Free)