



# Franklin County Heart Center

Part of the Keystone Healthcare Network

February 13, 2006

Joe Nick  
U.S. Nuclear Regulatory Commission  
Materials Licensing Branch  
Region I  
475 Allendale Road  
King of Prussia, PA 19406

RE: Amendment Request for Radioactive Material license 37-30856-01  
Franklin County Heart Center; Chambersburg, PA 17201

Mr. Nick:

We are in the process of building a new facility. The new facility is located at 755 Norland Ave., Suite 201, Chambersburg, PA 17201. Enclosed is a diagram of the nuclear medicine suite at the new facility. The hot lab will be stocked with a dose calibrator, well counter and lead-lined waste storage container as well as an L-block and lead brick fort for dose preparation. All hot lab items will be moved from the old hot lab. Upon acceptance of this amendment and completion of the construction, we will move to our new facility, perform a close-out survey of the old facility and forward the close-out survey to your office. We hope to be in the new facility by the first week of April.

If you have any questions or require additional information, please do not hesitate to contact our Radiation Safety Officer, Mark Perna at (412) 551-9259.

Sincerely,

  
John Englehart, Facilities and Safety Officer  
Keystone Health Center

Lbh/JE

NMSB2

03036454

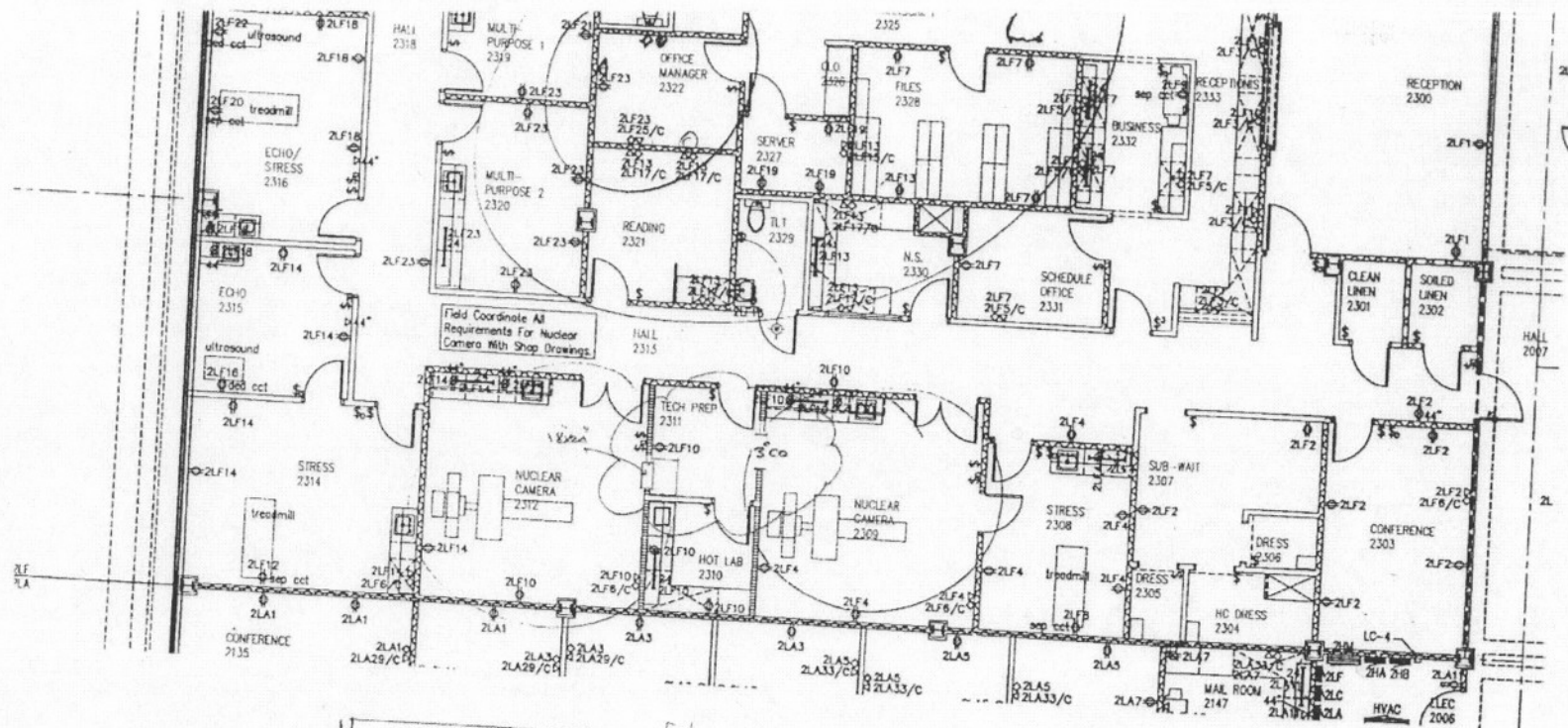
2006 FEB 17 PM 1:28

RECEIVED  
REGION 1

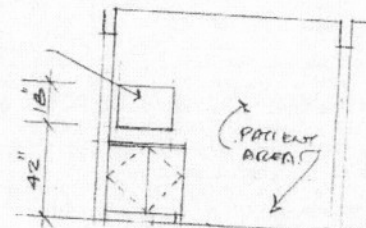
138446

NMSB/RCM MATERIALS-002

*Leading the way to a healthier community*



PASS THRU OPENING  
(NO DOOR)  
24" X 18"



PREP ROOM 2311 VIEW TO NORTH

VIEW SOUTH TO ROOM 2309

PASS THRU OPENING  
(NO DOOR) 18" X 24"

2" WIDE COUNTER

1/2" X 1/2" 11/28/05 REV. 100  
FALLIN COUNTY  
HEART CENTER

This is to acknowledge the receipt of your letter/application dated

2/13/2006, and to inform you that the initial processing which includes an administrative review has been performed.

☒ Amend. 37-30856-d  
There were no administrative omissions. Your application was assigned to a technical reviewer. Please note that the technical review may identify additional omissions or require additional information.

☐ Please provide to this office within 30 days of your receipt of this card

\_\_\_\_\_

A copy of your action has been forwarded to our License Fee & Accounts Receivable Branch, who will contact you separately if there is a fee issue involved.

Your action has been assigned **Mail Control Number** 138446.  
When calling to inquire about this action, please refer to this control number.  
You may call us on (610) 337-5398, or 337-5260.

NRC FORM 532 (RI)  
(6-96)

Sincerely,  
Licensing Assistance Team Leader