



# **DESIGN-CENTERED APPROACH**

**Phillip Ray**

**Senior Project Manager**

**Division of New Reactor Licensing**

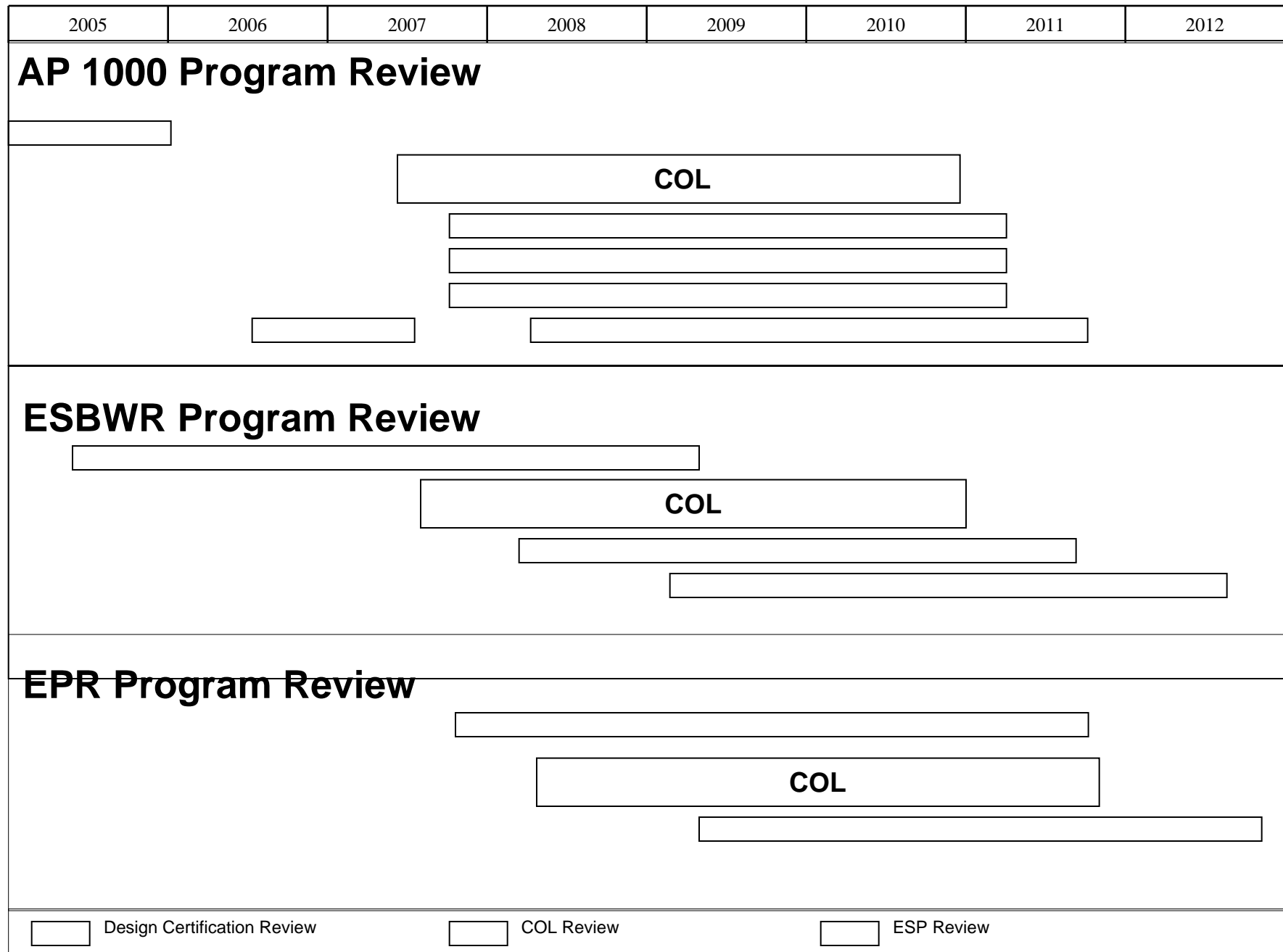
# Overview

- Success
- Design-Centered Review Approach
- One Decision-Multiple Applications
- Design-Centered Program

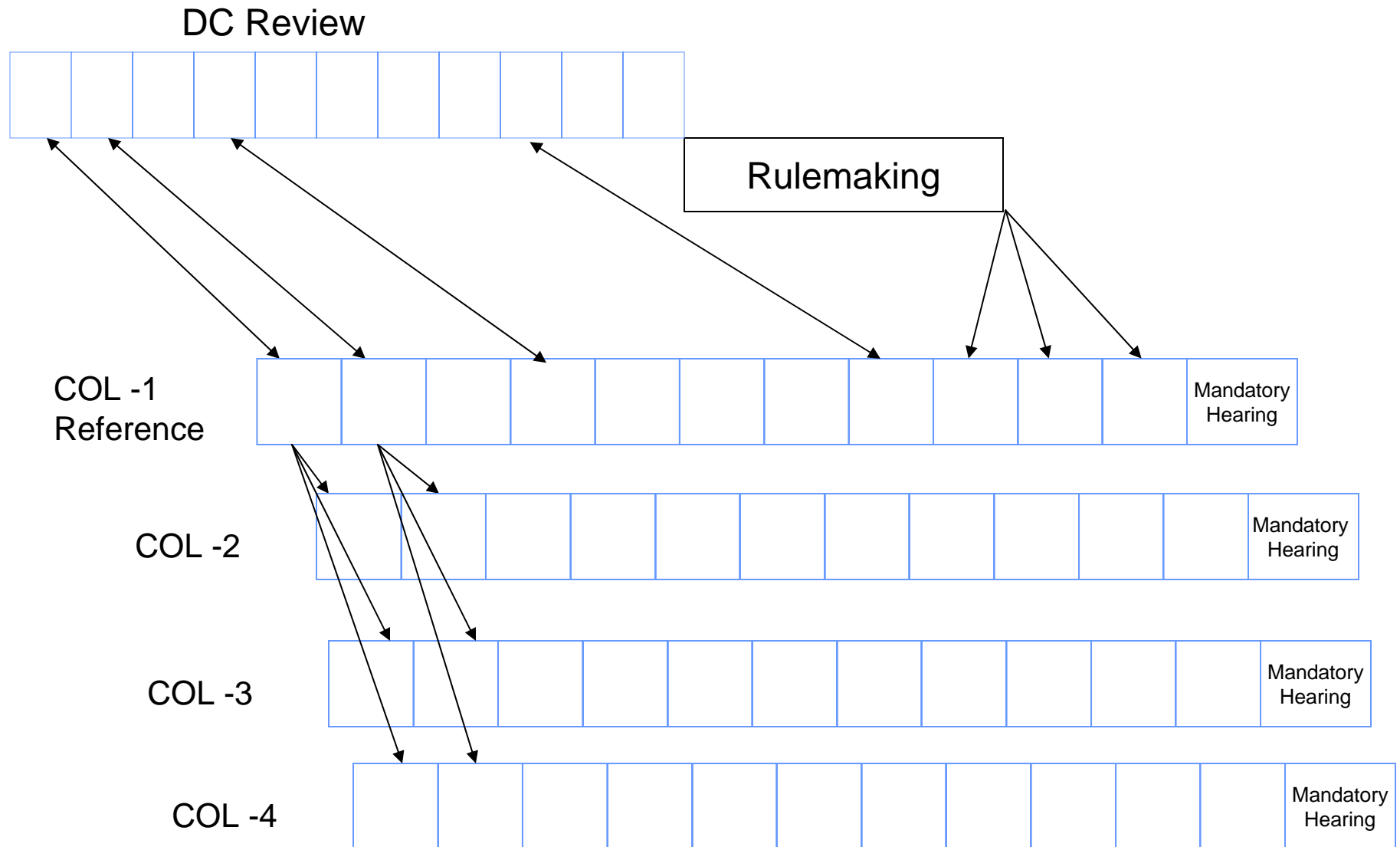
# Success

- Quality Review to Ensure Safety
- Timely Decisions
- Effective Use of Resources

# Design-Centered Review Approach

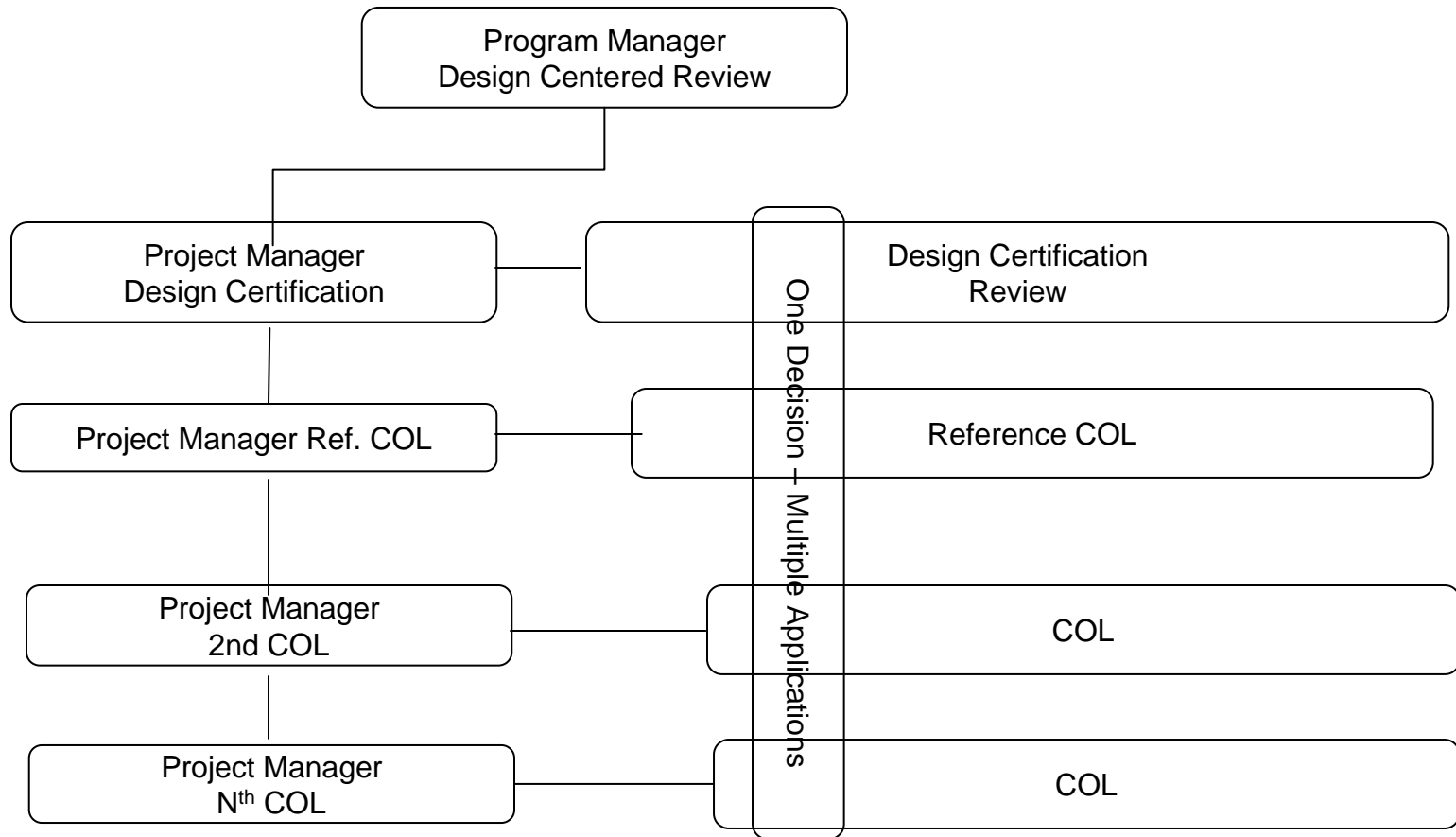


# One Decision – Multiple Applications



Similar approach used on site reviews (environmental and safety)

# Design-Centered Program



# **Strategies for Success**

- **Develop Vendor/Applicant Coordinating Groups**
- **Maximize Standardization**
- **Optimize Review Process**
- **Expand NRC Capabilities**

# **Develop Vendor/Applicant Coordinating Groups**

- Standardization
- High Quality Submittals
- Coordinated Responses
- Standard Contacts



# **A Win Win Approach...**

Single collaborative response to:

- Pre-application
- Technical issues
- RAI responses
- Operational programs ...

# Maximize Standardization

- Like applications
- Consistent level of detail
- Standard Methods
- Standard Terminologies

# Optimized Review Process

- Detailed Planning and Scheduling
- Disciplined Execution
- Pre-application Resolution of Issues

# Expanding NRC Capabilities

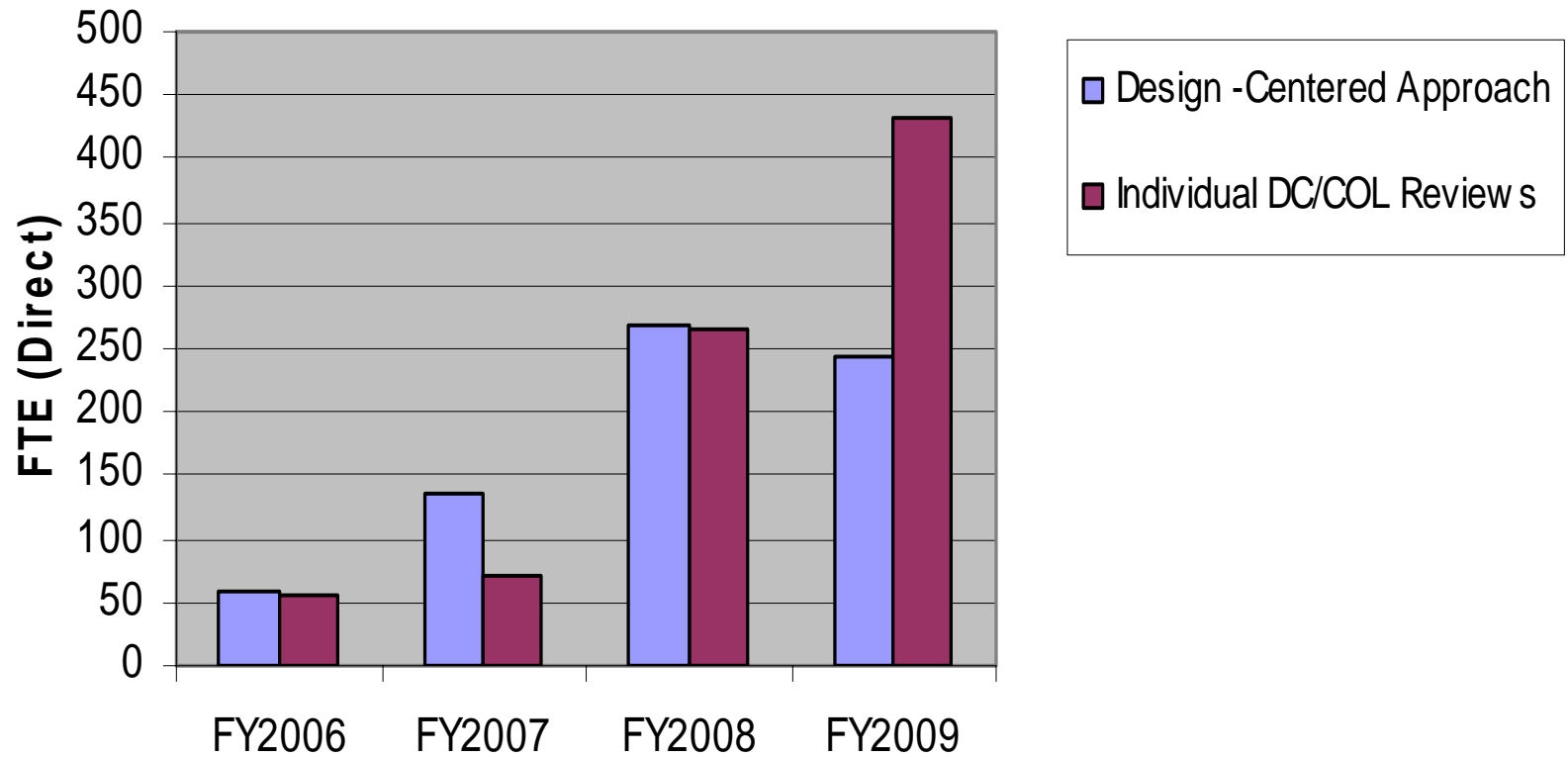
- Staff Recruiting/Retention
- Innovative Use of Contractors
  - Technical Review
  - Environmental Review

# New Plant Licensing Applications

## An Estimated Schedule

2005	2006	2007	2008	2009	2010	2011	2012
Cert Design	<b>AP1000 Program Review</b>						
			Duke - TBD Site	Hearing			
			NuStart-Bellefonte (AL)	Hearing			
			Progress Energy-Harris (NC)	Hearing			
			Progress Energy-TBD Site (FL)	Hearing			
			S. Carolina E&G-Summer (SC)	Hearing			
	ESP		Southern-Vogtle (GA)	Hearing			
<b>ESBWR Program Review</b>							
	ESBWR Design Certification Review						
ESP			Dominion - North Anna (VA)	Hearing			
			Entergy-River Bend (LA)	Hearing			
ESP			NuStart-Grand Gulf (MS)	Hearing			
<b>EPR Program Review</b>							
	EPR Design Certification Review						
			Constellation-Calvert Cliffs (MD)	Hearing			
			Constellation-Nine Mile Pt (NY)	Hearing			

## Illustration of Resource Optimization



# **Path Forward – Expectations**

- Organize Vendor/Applicant Coordinating Groups
- Determine Reference COL
- Schedule Reference COL and Subsequent COLs Application Submittal
- Identify Standardization Areas
- Use Topical Reports

# Conclusion

- Design Centered Approach Enables Success (Survival)
- Applicant and NRC Must Work Together
- Optimize Review Process