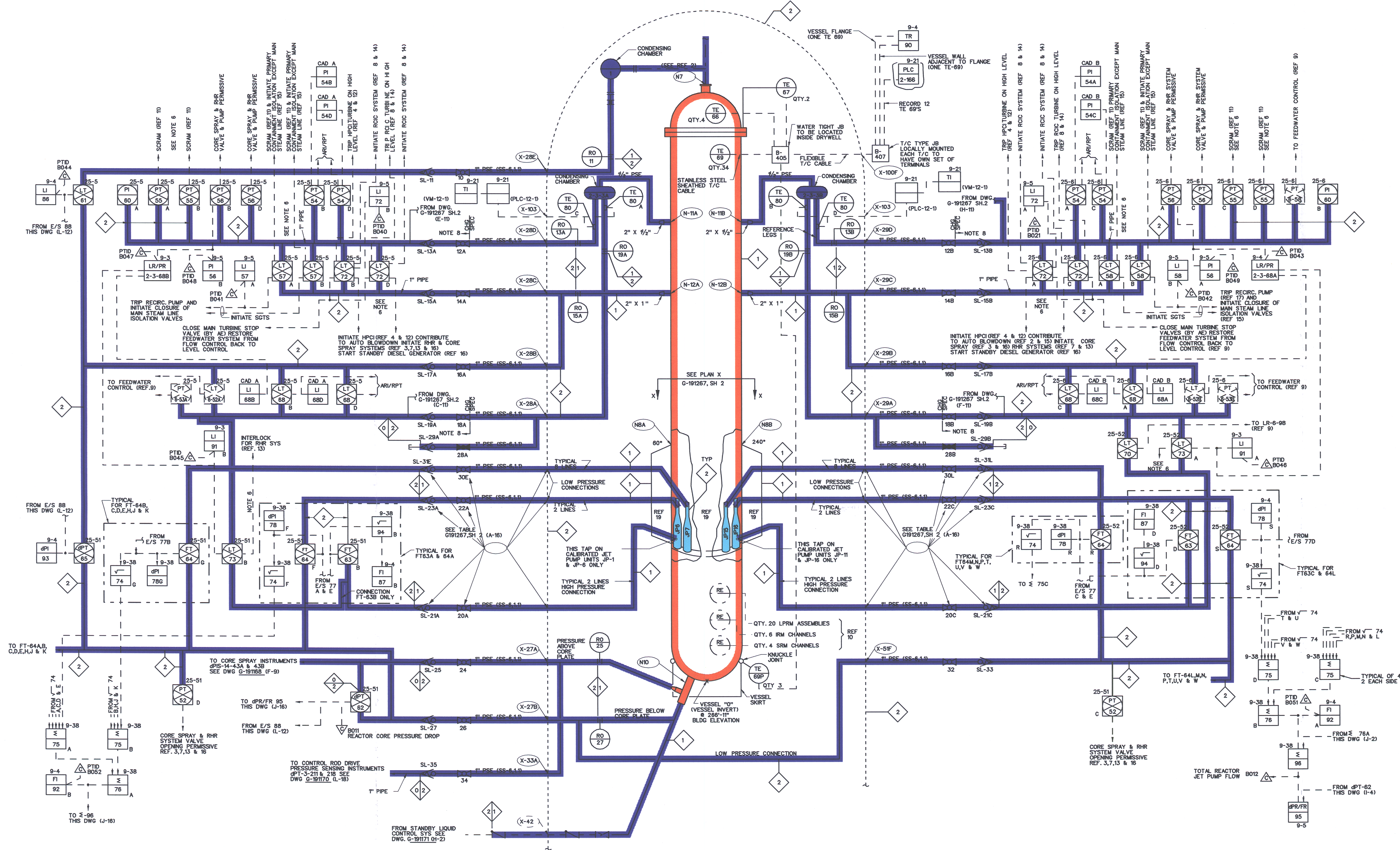


G-191267 SH.1



SYSTEM INTENDED FUNCTION BOUNDARY

COMPONENTS SUBJECT TO AMR

- REACTOR VESSEL AMRM-31
- REACTOR VESSEL INTERNALS AMRM-32
- REACTOR COOLANT SYSTEM PRESSURE BOUNDARY AMRM-33

29	REVISED PER ER 2000-0762	5-17-01	5-18-01	5-21-01
30	REVISED PER VDC 2000-017	LD	LD	LD
31	REVISED PER VDC 2000-017	LD	LD	LD
32	REVISED PER VDC 2000-017	LD	LD	LD
33	REVISED PER VDC 2000-017	LD	LD	LD
34	REVISED PER VDC 2000-017	LD	LD	LD
35	REVISED PER VDC 2000-017	LD	LD	LD
36	REVISED PER VDC 2000-017	LD	LD	LD
37	REVISED PER VDC 2000-017	LD	LD	LD
38	REVISED PER VDC 2000-017	LD	LD	LD
39	REVISED PER VDC 2000-017	LD	LD	LD
40	REVISED PER VDC 2000-017	LD	LD	LD
41	REVISED PER VDC 2000-017	LD	LD	LD
42	REVISED PER VDC 2000-017	LD	LD	LD
43	REVISED PER VDC 2000-017	LD	LD	LD
44	REVISED PER VDC 2000-017	LD	LD	LD
45	REVISED PER VDC 2000-017	LD	LD	LD
46	REVISED PER VDC 2000-017	LD	LD	LD
47	REVISED PER VDC 2000-017	LD	LD	LD
48	REVISED PER VDC 2000-017	LD	LD	LD
49	REVISED PER VDC 2000-017	LD	LD	LD
50	REVISED PER VDC 2000-017	LD	LD	LD

YANKEE ATOMIC ELECTRIC COMPANY

580 MAIN STREET BOLTON, MA.

NUCLEAR SERVICES DIVISION

VERMONT YANKEE NUCLEAR POWER STATION

VERNON, VERMONT

FLOW DIAGRAM

NUCLEAR BOILER VESSEL

INSTRUMENTATION

JOB NO. 93-404

DRAWING NO. G-191267 SH.1

0	3-29-05	DESCRIPTION	BY	ENG	CHK	APP
NO.	DATE	DESCRIPTION	BY	ENG	CHK	APP
1	3-29-05	DESCRIPTION	BY	ENG	CHK	APP
2	3-29-05	DESCRIPTION	BY	ENG	CHK	APP
3	3-29-05	DESCRIPTION	BY	ENG	CHK	APP
4	3-29-05	DESCRIPTION	BY	ENG	CHK	APP
5	3-29-05	DESCRIPTION	BY	ENG	CHK	APP
6	3-29-05	DESCRIPTION	BY	ENG	CHK	APP
7	3-29-05	DESCRIPTION	BY	ENG	CHK	APP
8	3-29-05	DESCRIPTION	BY	ENG	CHK	APP
9	3-29-05	DESCRIPTION	BY	ENG	CHK	APP
10	3-29-05	DESCRIPTION	BY	ENG	CHK	APP
11	3-29-05	DESCRIPTION	BY	ENG	CHK	APP
12	3-29-05	DESCRIPTION	BY	ENG	CHK	APP
13	3-29-05	DESCRIPTION	BY	ENG	CHK	APP
14	3-29-05	DESCRIPTION	BY	ENG	CHK	APP
15	3-29-05	DESCRIPTION	BY	ENG	CHK	APP
16	3-29-05	DESCRIPTION	BY	ENG	CHK	APP
17	3-29-05	DESCRIPTION	BY	ENG	CHK	APP
18	3-29-05	DESCRIPTION	BY	ENG	CHK	APP
19	3-29-05	DESCRIPTION	BY	ENG	CHK	APP
20	3-29-05	DESCRIPTION	BY	ENG	CHK	APP

0

3-29-05

DESCRIPTION

BY

ENG

CHK

APP

1

3-29-05

DESCRIPTION

BY

ENG

CHK

APP

2

3-29-05

DESCRIPTION

BY

ENG

CHK

APP

3

3-29-05

DESCRIPTION

BY

ENG

CHK

APP

4

3-29-05

DESCRIPTION

BY

ENG

CHK

APP

5

3-29-05

DESCRIPTION

BY

ENG

CHK

APP

6

3-29-05

DESCRIPTION

BY

ENG

CHK

APP

7

3-29-05

DESCRIPTION

BY

ENG

CHK

APP

8

3-29-05

DESCRIPTION

BY

ENG

CHK

APP

9

3-29-05

DESCRIPTION

BY

ENG

CHK

APP

10

3-29-05

DESCRIPTION

BY

ENG

CHK

APP

11

3-29-05

DESCRIPTION

BY

ENG

CHK

APP

12

3-29-05

DESCRIPTION

BY

ENG

CHK

APP

13

3-29-05

DESCRIPTION

BY

ENG

CHK

APP

14

3-29-05

DESCRIPTION

BY

ENG

CHK

APP

15

3-29-05

DESCRIPTION

BY

ENG

CHK

APP

16

3-29-05

DESCRIPTION

BY

ENG

CHK

APP

17

3-29-05

DESCRIPTION

BY

ENG

CHK

APP

18

3-29-05

DESCRIPTION

BY

ENG

CHK

APP

19

3-29-05

DESCRIPTION

BY

ENG

CHK

APP

20

3-29-05

DESCRIPTION

BY

ENG

CHK

APP

0

3-29-05

DESCRIPTION

BY

ENG

CHK

APP

1

3-29-05

DESCRIPTION

BY

ENG

CHK

APP

2

3-29-05

DESCRIPTION

BY

ENG

CHK

APP

3

3-29-05

DESCRIPTION

BY

ENG

CHK

APP

4

3-29-05

DESCRIPTION

BY

ENG

CHK

APP

5

3-29-05

DESCRIPTION

BY

ENG

CHK

APP

6

3-29-05

DESCRIPTION

BY

ENG

CHK

APP

7

3-29-05

DESCRIPTION

BY

ENG

CHK

APP

8

3-29-05

DESCRIPTION

BY

ENG

CHK

APP

9

3-29-05

DESCRIPTION

BY

ENG

CHK

APP

10

3-29-05

DESCRIPTION

BY

ENG

CHK

APP

11

3-29-05

DESCRIPTION

BY

ENG

CHK

APP

12

3-29-05

DESCRIPTION

BY

ENG

CHK

APP

13

3-29-05

DESCRIPTION

BY

ENG

CHK

APP

14

3-29-05

DESCRIPTION

BY

ENG

CHK

APP

15

3-29-05

DESCRIPTION

BY

ENG

CHK

APP

16

3-29-05

DESCRIPTION

BY

ENG

CHK

APP

17

3-29-05

DESCRIPTION

BY

ENG

CHK

APP

18

3-29-05

DESCRIPTION

BY

ENG

CHK

APP

19

3-29-05

DESCRIPTION

BY

ENG

CHK

APP

20

3-29-05

DESCRIPTION

BY

ENG

CHK

APP