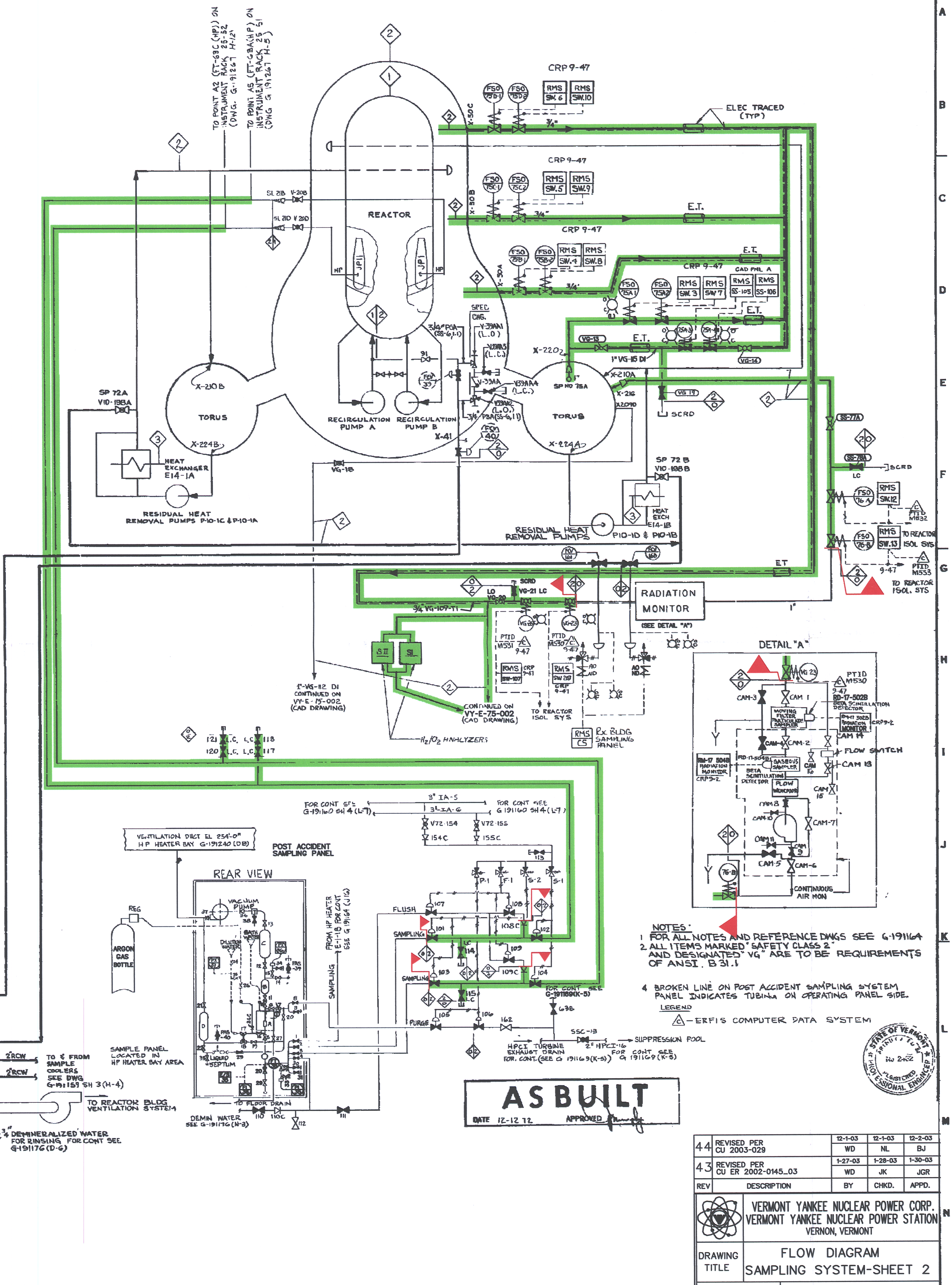
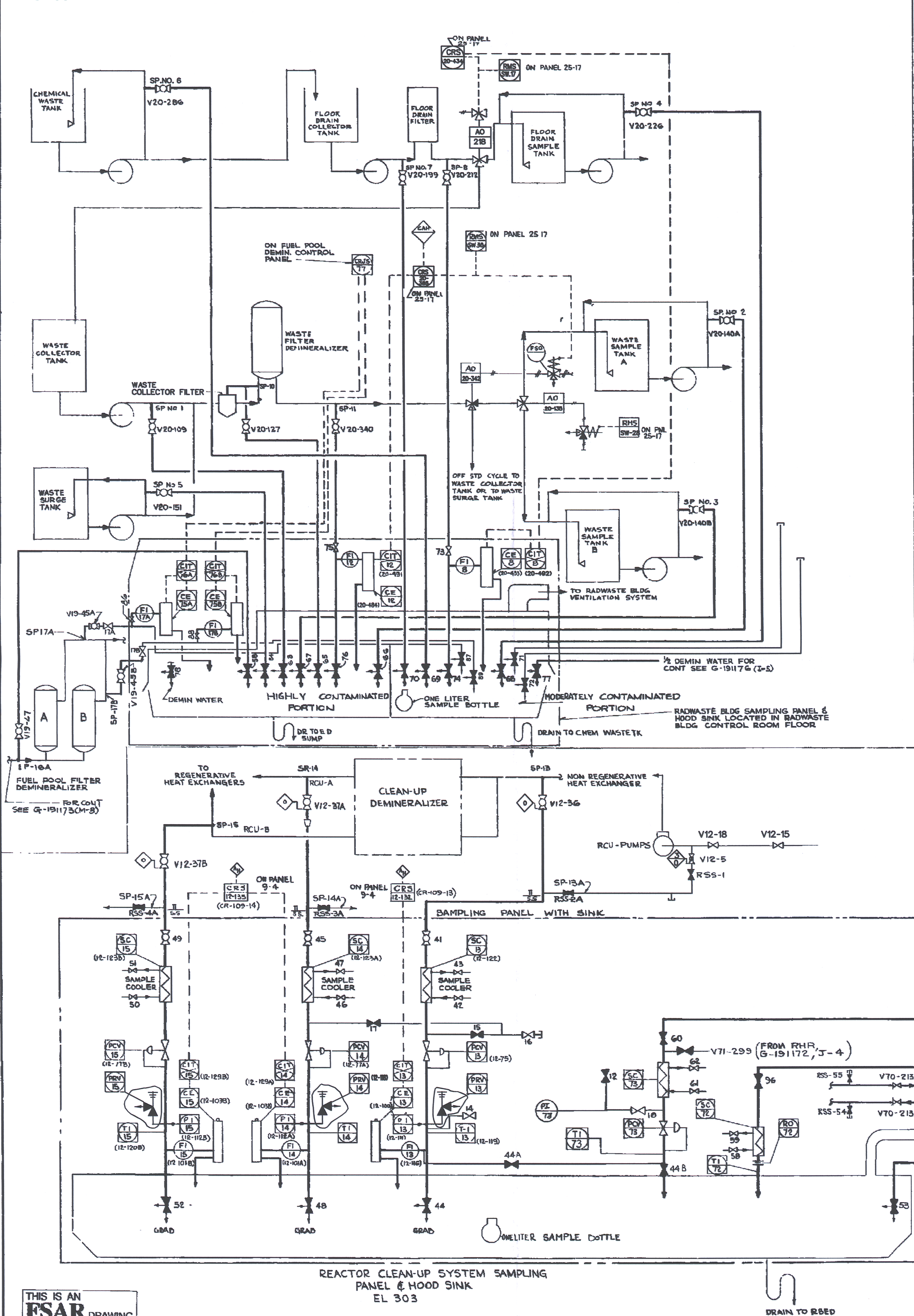


G-191165



SYSTEM INTENDED FUNCTION BOUNDARY

COMPONENTS SUBJECT TO AMR

PRIMARY CONTAINMENT  
ATMOSPHERE CONTROL  
AND DILUTION SYSTEM AMRM-08

NOTE:  
ON THIS LRA DRAWING, ONLY COMPONENTS  
SUBJECT TO AGING MANAGEMENT REVIEW  
IN AMRM-08, AGING MANAGEMENT REVIEW  
OF THE PRIMARY CONTAINMENT  
ATMOSPHERE CONTROL AND CONTAINMENT  
ATMOSPHERE DILUTION SYSTEMS ARE  
HIGHLIGHTED. SIMPLIFIED VERSIONS OF  
OTHER SYSTEMS WITHIN THE SCOPE OF  
LICENSE RENEWAL ARE SHOWN ON THIS  
DRAWING TO ILLUSTRATE THE LOCATION  
OF SAMPLING POINTS. REFER TO OTHER  
LRA DRAWINGS FOR DETAILS ON THESE  
OTHER SYSTEMS.

4.4	REVISED PER CU 2003-029	12-1-03	12-1-03	12-2-03	
		WD	NL	BJ	
4.3	REVISED PER CU ER 2002-0145.03	1-27-03	1-28-03	1-30-03	
		WD	JK	JGR	
REV	DESCRIPTION	BY	CHKD.	APPD.	
VERMONT YANKEE NUCLEAR POWER CORP. VERMONT YANKEE NUCLEAR POWER STATION VERNON, VERMONT					
DRAWING TITLE	FLOW DIAGRAM SAMPLING SYSTEM-SHEET 2				
JOB NO.	DRAWING NO.	G-191165			

0	3-29-05				
NO.	DATE	DESCRIPTION	BY	ENG	CHK
REVISIONS					
LRA-G-191165-0					
CPO FILE LRA-G-191165_44.DGN					
PLOTTER FILE G-191165_44.TIF					