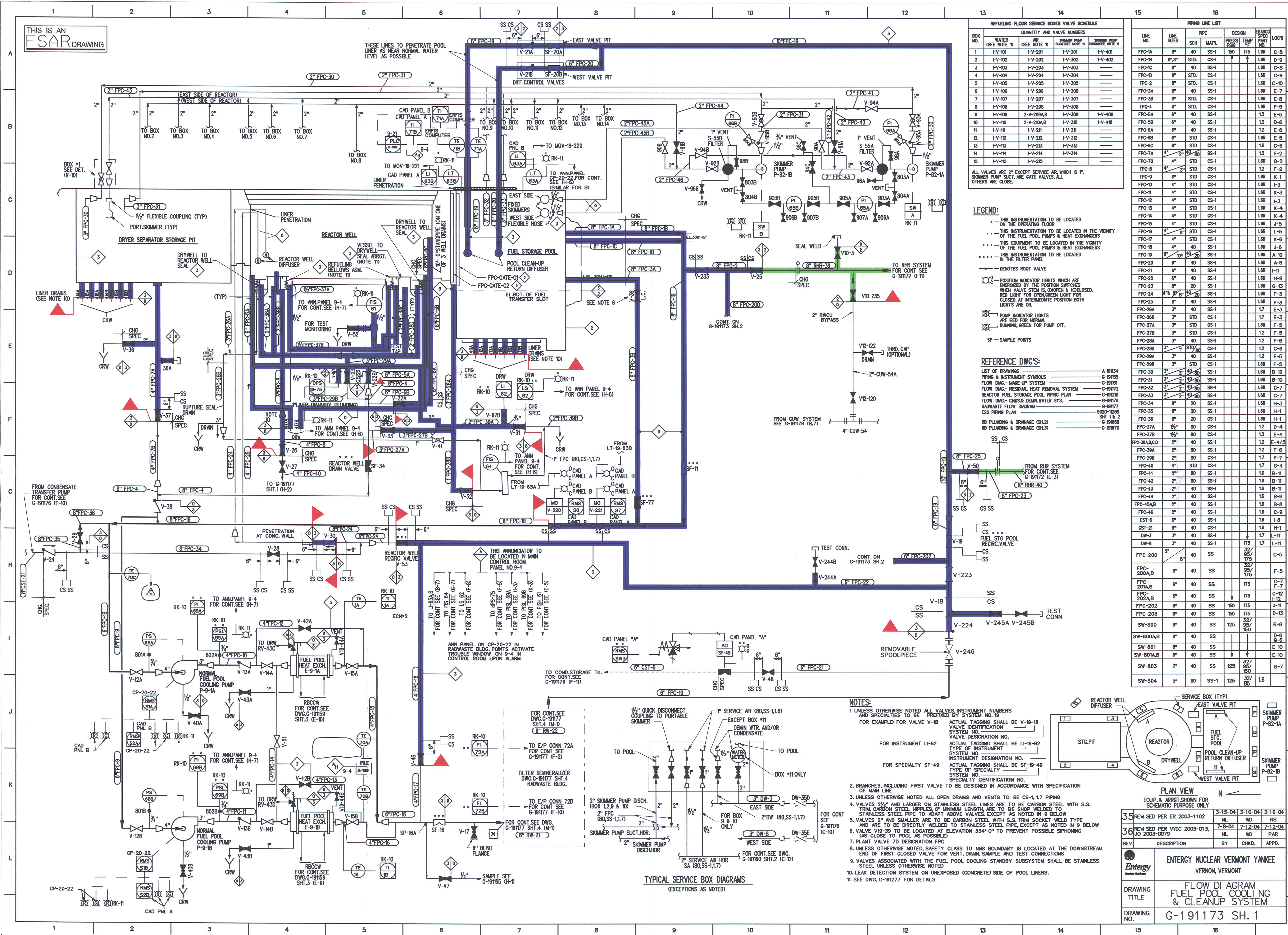


THIS IS AN
FSAR
DRAWING



REFUELING FLOOR SERVICE BOXES VALVE SCHEDULE				
BOX NO.	WATER (SEE NOTE 1)	AR (SEE NOTE 1)	STEAMER PUMP (SEE NOTE 1)	STEAMER PUMP (SEE NOTE 1)
1	1-V-101	1-V-201	1-V-301	1-V-401
2	1-V-102	1-V-202	1-V-302	1-V-402
3	1-V-103	1-V-203	1-V-303	---
4	1-V-104	1-V-204	1-V-304	---
5	1-V-105	1-V-205	1-V-305	---
6	1-V-106	1-V-206	1-V-306	---
7	1-V-107	1-V-207	1-V-307	---
8	1-V-108	1-V-208	1-V-308	---
9	1-V-109	1-V-209	1-V-309	1-V-409
10	1-V-110	1-V-210	1-V-310	1-V-410
11	1-V-111	1-V-211	1-V-311	---
12	1-V-112	1-V-212	1-V-312	---
13	1-V-113	1-V-213	1-V-313	---
14	1-V-114	1-V-214	1-V-314	---
15	1-V-115	1-V-215	---	---

LEGEND:

- THIS INSTRUMENTATION TO BE LOCATED ON THE OPERATING FLOOR
- THIS INSTRUMENTATION TO BE LOCATED IN THE VICINITY OF THE FUEL POOL PUMPS & HEAT EXCHANGERS
- THIS EQUIPMENT TO BE LOCATED IN THE VICINITY OF THE FUEL POOL PUMPS & HEAT EXCHANGERS
- THIS INSTRUMENTATION TO BE LOCATED IN THE FILTER PANEL
- DENOTES ROOT VALVE
- POSITION INDICATOR LIGHTS WHICH ARE ENERGIZED BY THE POSITION SWITCHES WHEN VALVE IS OPEN & DEENERGIZED BY THE POSITION SWITCHES WHEN VALVE IS CLOSED. RED LIGHT FOR OPEN/GREEN LIGHT FOR CLOSED. AT INTERMEDIATE POSITION BOTH LIGHTS ARE ON.
- PUMP INDICATOR LIGHTS ARE RED FOR NORMAL RUNNING, GREEN FOR PUMP OFF.
- SP - SAMPLE POINTS

REFERENCE DWGS:

- LIST OF DRAWINGS: A-19134
- PPM & INSTRUMENT SYMBOLS: G-19155
- FLOW DIAG. MAKE-UP SYSTEM: G-19161
- FLOW DIAG. RESIDUAL HEAT REMOVAL SYSTEM: G-19172
- REACTOR FUEL STORAGE POOL PIPING PLAN: G-19172B
- FLOW DIAG. CHS & DEMIN. WATER SYS.: G-19176
- RAI WASTE FLOW DIAGRAM: G-19177
- ESS PIPING PLAN: 5820-12559 SHT. 1 & 2
- RB PLUMBING & DRAINAGE (SH.2): G-19169
- RB PLUMBING & DRAINAGE (SH.3): G-19170

PIPING LINE LIST									
LINE NO.	LINE SIZE	SCH.	MATL.	DESIGN PRESS. (PSIG)	TEMP. (°F)	BRASS SPEC. PART NO.	LOCN.	DESIGN PRESS. (PSIG)	TEMP. (°F)
FPC-1A	8"	40	SS-1	150	175	1.6R	C-8		
FPC-1B	8"	40	SS-1	150	175	1.6R	D-9		
FPC-1C	8"	40	SS-1	150	175	1.6R	C-8		
FPC-1D	8"	40	SS-1	150	175	1.6R	C-9		
FPC-2	8"	40	SS-1	150	175	1.6R	C-10		
FPC-3A	8"	40	SS-1	150	175	1.6R	E-7		
FPC-3B	8"	40	SS-1	150	175	1.6R	E-8		
FPC-4	8"	40	SS-1	150	175	1.6R	F-5		
FPC-5A	8"	40	SS-1	150	175	1.2	E-5		
FPC-5B	8"	40	SS-1	150	175	1.2	E-6		
FPC-6A	8"	40	SS-1	150	175	1.2	E-9		
FPC-6B	8"	40	SS-1	150	175	1.6	E-5		
FPC-6C	8"	40	SS-1	150	175	1.6	C-6		
FPC-7A	4"	20	SS-1	150	175	1.2	F-2		
FPC-7B	4"	20	SS-1	150	175	1.6R	G-2		
FPC-8	4"	20	SS-1	150	175	1.2	F-2		
FPC-9	6"	40	SS-1	150	175	1.6R	K-1		
FPC-10	4"	20	SS-1	150	175	1.6R	I-3		
FPC-11	4"	20	SS-1	150	175	1.6R	K-3		
FPC-12	4"	20	SS-1	150	175	1.6R	I-3		
FPC-13	4"	20	SS-1	150	175	1.6R	K-4		
FPC-14	4"	20	SS-1	150	175	1.6R	K-4		
FPC-15	4"	20	SS-1	150	175	1.6R	J-5		
FPC-16	4"	20	SS-1	150	175	1.6R	L-5		
FPC-17	4"	20	SS-1	150	175	1.6R	K-6		
FPC-18	4"	20	SS-1	150	175	1.6R	J-6		
FPC-19	6"	40	SS-1	150	175	1.6R	A-10		
FPC-20	6"	40	SS-1	150	175	1.6R	A-8		
FPC-21	6"	40	SS-1	150	175	1.6R	I-11		
FPC-22	6"	40	SS-1	150	175	1.6R	H-9		
FPC-23	8"	40	SS-1	150	175	1.6R	G-13		
FPC-24	4"	20	SS-1	150	175	1.6R	F-3		
FPC-25	8"	40	SS-1	150	175	1.6R	E-3		
FPC-26A	3"	20	SS-1	150	175	1.7	E-3		
FPC-26B	3"	20	SS-1	150	175	1.7	E-3		
FPC-27A	3"	20	SS-1	150	175	1.6R	F-5		
FPC-27B	3"	20	SS-1	150	175	1.2	F-5		
FPC-28A	3"	20	SS-1	150	175	1.2	F-6		
FPC-28B	3"	20	SS-1	150	175	1.2	G-6		
FPC-29A	3"	20	SS-1	150	175	1.2	E-5		
FPC-29B	3"	20	SS-1	150	175	1.6R	F-5		
FPC-30	3"	20	SS-1	150	175	1.6R	B-12		
FPC-31	3"	20	SS-1	150	175	1.6R	B-10		
FPC-32	3"	20	SS-1	150	175	1.6R	C-7		
FPC-33	3"	20	SS-1	150	175	1.6R	C-7		
FPC-34	8"	20	SS-1	150	175	1.6R	H-3		
FPC-35	8"	20	SS-1	150	175	1.6R	H-1		
FPC-36	8"	20	SS-1	150	175	1.6R	H-1		
FPC-37A	1/2"	80	CS-1	125	150	1.2	D-4		
FPC-37B	1/2"	80	CS-1	125	150	1.2	E-4		
FPC-38A,B,C,D	2"	40	SS-1	125	150	1.2	E-4/S		
FPC-39A	2"	40	SS-1	125	150	1.2	F-6		
FPC-39B	2"	40	SS-1	125	150	1.7	F-7		
FPC-40	4"	20	SS-1	125	150	1.7	G-4		
FPC-41	2"	40	SS-1	125	150	1.6	B-11		
FPC-42	2"	40	SS-1	125	150	1.6	B-11		
FPC-43	2"	40	SS-1	125	150	1.6	B-11		
FPC-44	2"	40	SS-1	125	150	1.6	B-9		
FPC-45A,B	2"	40	SS-1	125	150	1.6	B-8		
FPC-46	2"	40	SS-1	125	150	1.6	C-9		
CST-6	6"	40	CS-1	125	150	1.6	I-8		
CST-21	8"	40	CS-1	125	150	1.6	H-1		
DW-3	3"	40	SS-1	125	150	1.7	L-11		
DW-8	3"	40	SS-1	125	150	1.7	L-11		
FPC-200	2"	40	SS	32/85	175	1.6	C-5		
FPC-200A,B	8"	40	SS	32/85	175	1.6	F-5		
FPC-200A,B	6"	40	SS	175	175	1.6	E-7		
FPC-202A,B	6"	40	SS	175	175	1.6	G-12		
FPC-202A,B	6"	40	SS	175	175	1.6	I-12		
FPC-203	6"	40	SS	150	175	1.6	D-13		
SW-800	8"	40	SS	125	150	1.6	B-8		
SW-800A,B	8"	40	SS	125	150	1.6	D-6		
SW-801	8"	40	SS	125	150	1.6	E-10		
SW-801A,B	8"	40	SS	125	150	1.6	E-10		
SW-803	2"	40	SS	125	150	1.6	B-7		
SW-804	2"	80	SS-1	125	150	1.6			

SYSTEM INTENDED FUNCTION BOUNDARY

COMPONENTS SUBJECT TO AMR

RESIDUAL HEAT REMOVAL SYSTEM AMRM-02

FUEL POOL COOLING SYSTEMS AMRM-14

NOTES:

- UNLESS OTHERWISE NOTED ALL VALVES, INSTRUMENT NUMBERS AND SPECIALTIES TO BE PREFIXED BY SYSTEM NO. 19. FOR EXAMPLE: FOR VALVE V-18 ACTUAL TAGGING SHALL BE V-19-18 VALVE IDENTIFICATION SYSTEM NO. 19 VALVE DESIGNATION NO. 18. FOR INSTRUMENT LI-62 ACTUAL TAGGING SHALL BE LI-19-62 TYPE OF INSTRUMENT SYSTEM NO. 19 INSTRUMENT DESIGNATION NO. 62. FOR SPECIALTY SF-49 ACTUAL TAGGING SHALL BE SF-19-49 TYPE OF SPECIALTY SYSTEM NO. 19 SPECIALTY IDENTIFICATION NO. 49.
- BRANCHES, INCLUDING FIRST VALVE TO BE DESIGNED IN ACCORDANCE WITH SPECIFICATION
- UNLESS OTHERWISE NOTED ALL OPEN DRAINS AND VENTS TO BE CS-1, 1.7 PIPING
- VALVES 2 1/2" AND LARGER ON STAINLESS STEEL LINES ARE TO BE CARBON STEEL WITH S.S. TRIM. CARBON STEEL NIPPLES, 6" MINIMUM LENGTH, ARE TO BE SHOP WELDED TO STAINLESS STEEL PIPE TO ADAPT ABOVE VALVES, EXCEPT AS NOTED IN 9 BELOW
- VALVES 2" AND SMALLER ARE TO BE CARBON STEEL WITH S.S. TRIM SOCKET WELD TYPE AND ARE TO BE DIRECTLY WELDED TO STAINLESS STEEL PIPE, EXCEPT AS NOTED IN 9 BELOW (AS CLOSE TO POOL AS POSSIBLE)
- PLANT VALVE 7D DESIGNATION FPC
- UNLESS OTHERWISE NOTED, SAFETY CLASS TO HNS BOUNDARY IS LOCATED AT THE DOWNSTREAM END OF FIRST CLOSED VALVE FOR VENT, DRAIN, SAMPLE AND TEST CONNECTIONS
- VALVES ASSOCIATED WITH THE FUEL POOL COOLING STANDBY SUBSYSTEM SHALL BE STAINLESS STEEL UNLESS OTHERWISE NOTED
- LEAK DETECTION SYSTEM ON UNEXPOSED (CONCRETE) SIDE OF POOL LINERS
- SEE DWG. G-191277 FOR DETAILS.

PLAN VIEW			
EQUIP. & ADJUST. SHOWN FOR SCHEMATIC PURPOSE ONLY			
35	REV SED PER EOR 2003-1102	3-15-04	3-16-04
		NL	WD
		RB	
36	REV SED PER VYDC 2003-01-3	7-8-04	7-12-04
		NL	WD
		APR	
REV	DESCRIPTION	BY	CHKD.
ENTERGY NUCLEAR VERMONT YANKEE			
VERNON, VERMONT			
FLOW DIAGRAM FUEL POOL COOLING & CLEANUP SYSTEM			
DRAWING TITLE			
DRAWING NO. G-191173 SH. 1			

REVISIONS			
NO.	DATE	DESCRIPTION	BY
1	4-1-05	DESCRIPTION	ENG
2			
3			
4			
5			
6			
7			
8			
9			
10			
11			
12			
13			
14			
15			
16			
17			
18			
19			
20			
21			
22			
23			
24			
25			
26			
27			
28			
29			
30			
31			
32			
33			
34			
35			
36			
37			
38			
39			
40			
41			
42			
43			
44			
45			
46			
47			
48			
49			
50			
51			
52			
53			
54			
55			
56			
57			
58			
59			
60			
61			
62			
63			
64			
65			
66			
67			
68			
69			
70			
71			
72			
73			
74			
75			
76			
77			
78			
79			
80			
81			
82			
83			
84			
85			
86			
87			
88			
89			
90			
91			
92			
93			
94			
95			
96			
97			
98			
99			
100			