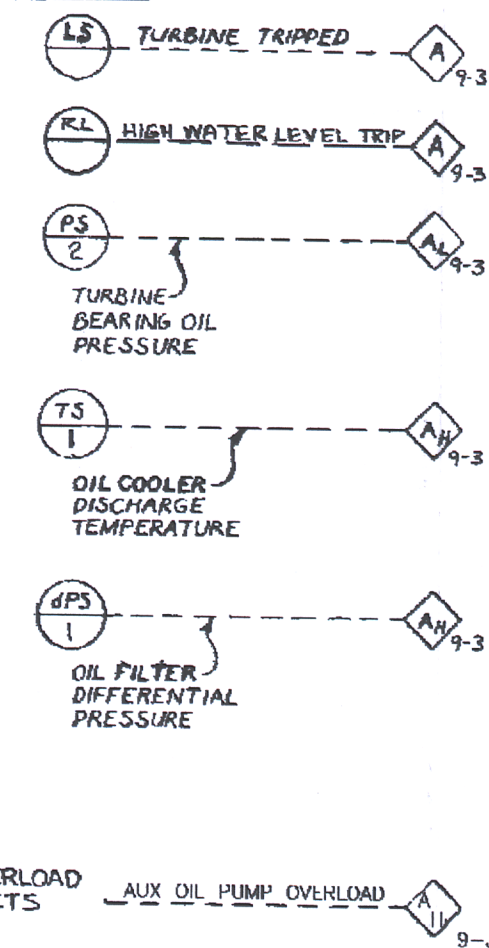


G-191169

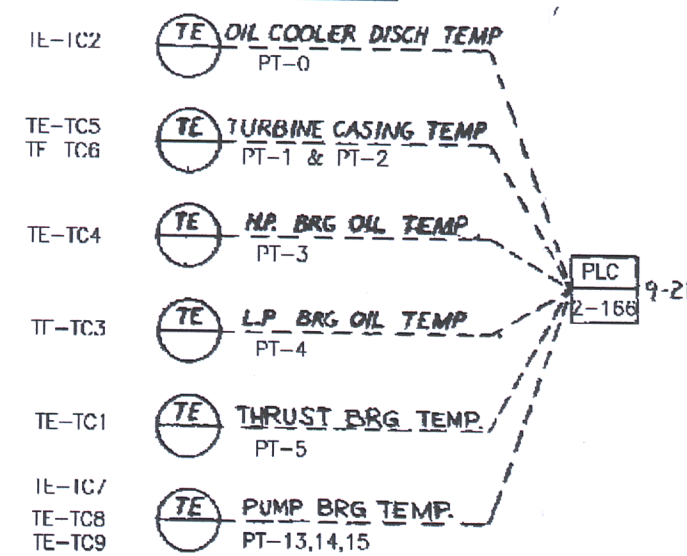
TURBINE HYDRAULIC CONTROL SYSTEM

SUPERVISORY INSTRUMENTATION

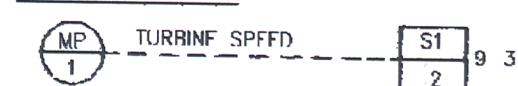
ALARMS



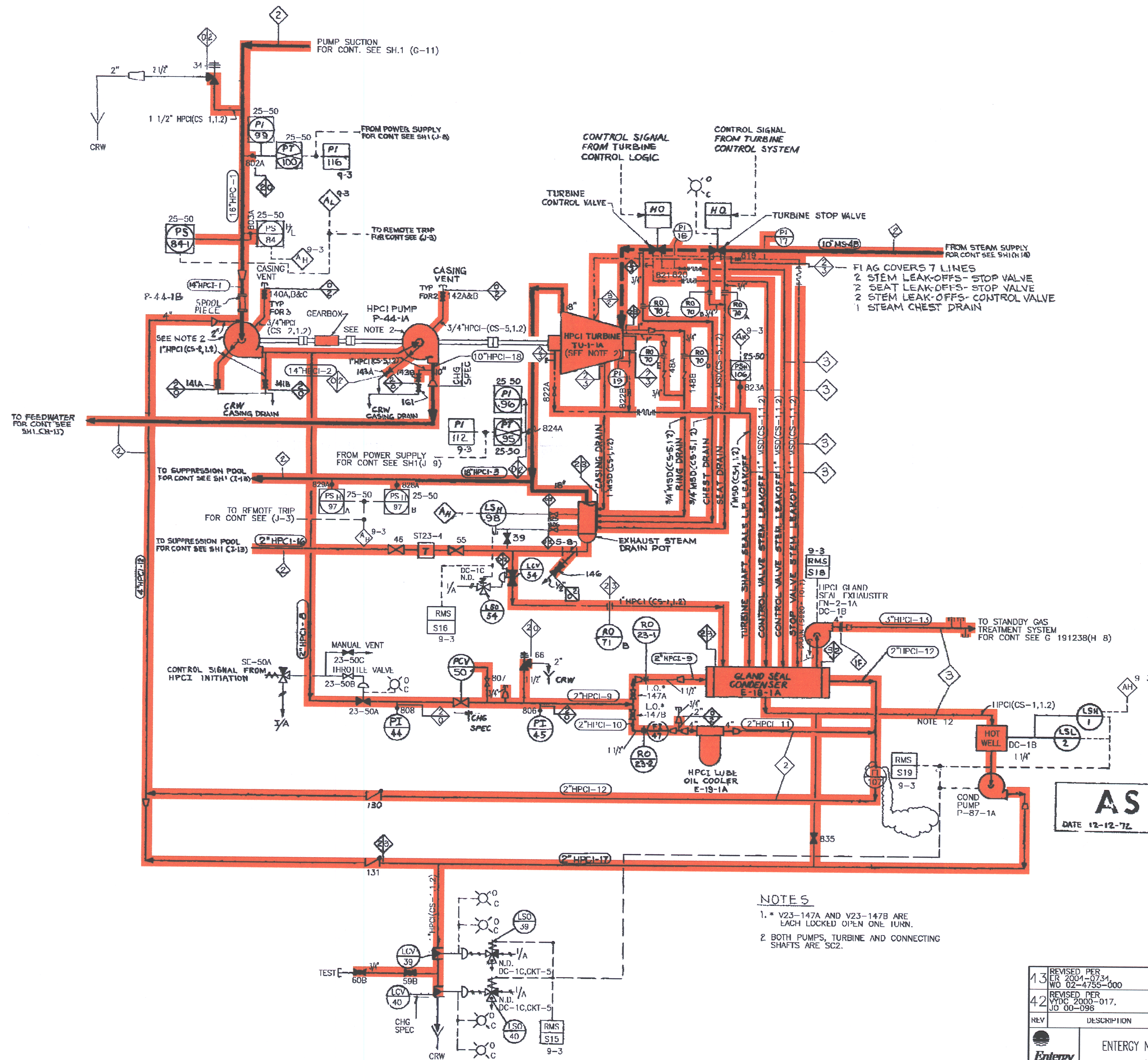
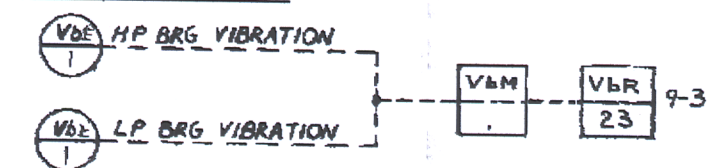
TEMP RECORDING



TURBINE SPEED



SHAFT VIBRATION



NOTES

1. * V23-147A AND V23-147B ARE EACH LOCKED OPEN ONE TURN.
2. BOTH PUMPS, TURBINE AND CONNECTING SHAFTS ARE SC2.

AS BUILT



13	REVISED PER CR 2004-02-34 WD 02-4755-000	12-6-04/12-6-04/12-6-04
42	REVISED PER VINC 2000-017, JD 00-098	1-23-02/1-24-02/1-24-02
REV	DESCRIPTION	BY
ENT	ENTERGY NUCLEAR VERMONT YANKEE VERMONT	CHKD
DRAWING TITLE	FLOW DIAGRAM HIGH PRESSURE COOLANT INJECTION SYSTEM	APPD
DRAWING NO.	G-191169 SH.2	

SYSTEM INTENDED
FUNCTION BOUNDARY

COMPONENTS SUBJECT TO AMR

HIGH PRESSURE COOLANT
INJECTION SYSTEM AMR-05

0	3-29-05				
NO.	DATE	DESCRIPTION	BY	ENG	CHK
REVISIONS					
LRA-G-191169-SH-02-0					
LRA-G-191169-SH-02-43.DGN					
G-191169-SH-02-CALS_43.CAL					

THIS IS AN
FSAR
DRAWING

REPRODUCED FROM ORIGINAL GE-DWG-7389445H 2 R-1