

NOTES AND SYMBOLS

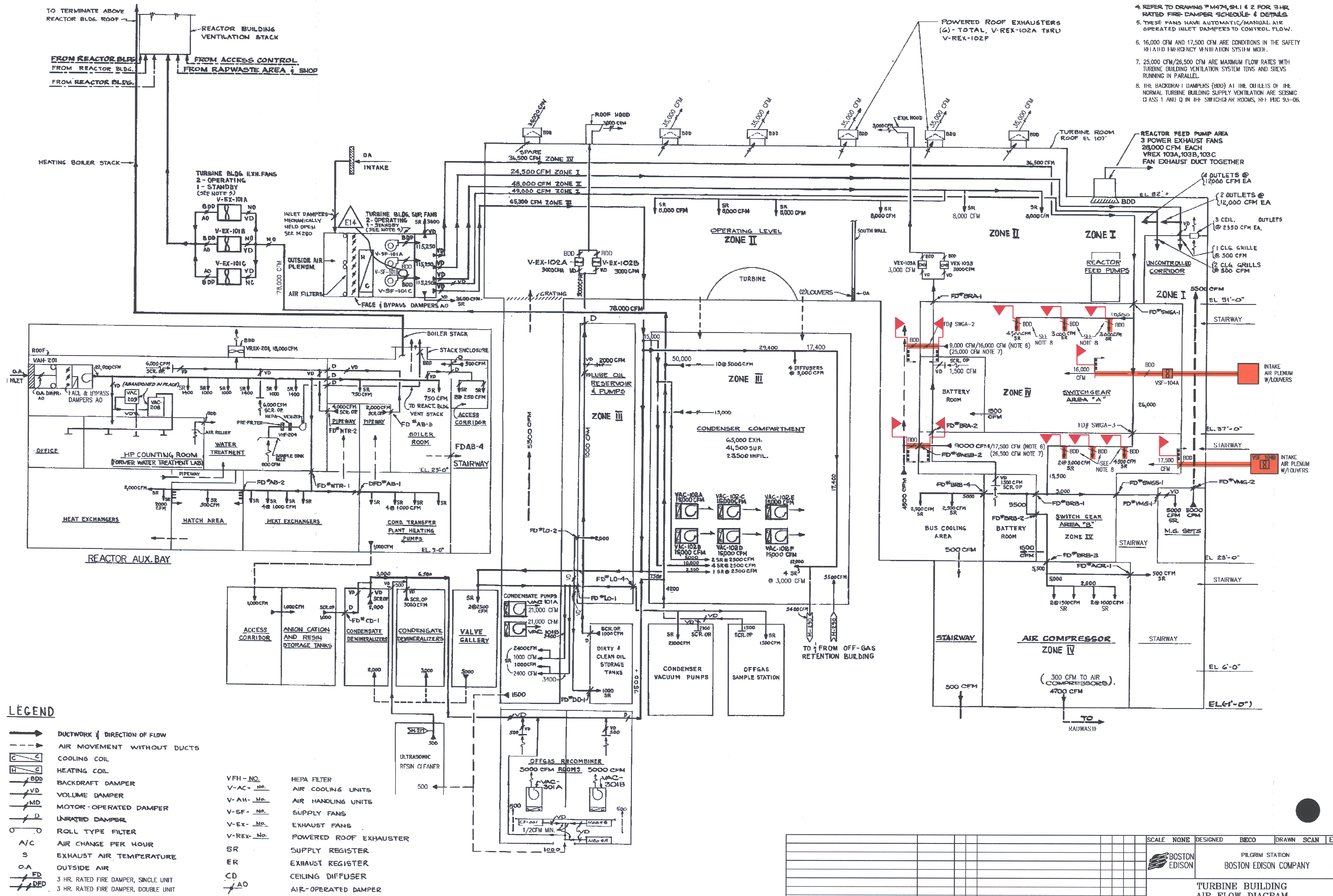
1. DESIGNATIONS REFER INDIVIDUALLY ENCLOSED SPACES TO BE VENTILATED
2. WINTER INDOOR TEMPERATURES IN ALL AREAS WILL BE 60°F MINIMUM
3. SEISMIC CLASS I BREAK
4. REFER TO DRAWING T-1474, SH-1 & 2 FOR 3-HR RATED FIRE DAMPER SCHEDULE & DETAILS
5. THESE FANS HAVE AUTOMATIC/MANUAL AIR OPERATED INLET DAMPERS TO CONTROL FLOW
6. 16,000 CFM AND 17,500 CFM ARE CONDITIONS IN THE SAFETY RELIABLE EMERGENCY VENTILATION SYSTEM MOD.
7. 25,000 CFM/26,500 CFM ARE MAXIMUM FLOW RATES WITH TURBINE BUILDING VENTILATION SYSTEM TDYS AND SRV'S RUNNING IN PARALLEL
8. THE BACKUP DAMPERS (BDD) AT THE OUTLETS OF THE NORMAL TURBINE BUILDING SUPPLY VENTILATION ARE SEISMIC CLASS I AND Q IN THE SWITCHGEAR ROOMS, SEE FIG. 93-06.

SYSTEM INTENDED FUNCTION BOUNDARY

COMPONENTS SUBJECT TO AMR

HEATING, VENTILATION AND AIR CONDITIONING SYSTEMS
AMR-19

NO.	DATE	DESCRIPTION	BY	ENG	CHK	APP
0	2-7-05					
REVISIONS						
LRA-M-288-0						
LRA-M-288-E14.DGN						
M288-CALS-E14.CAL						



NO.	DATE	DESCRIPTION	BY	ENG	CHK	APP
0	2-7-05					
REVISIONS						
LRA-M-288-0						
LRA-M-288-E14.DGN						
M288-CALS-E14.CAL						