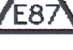

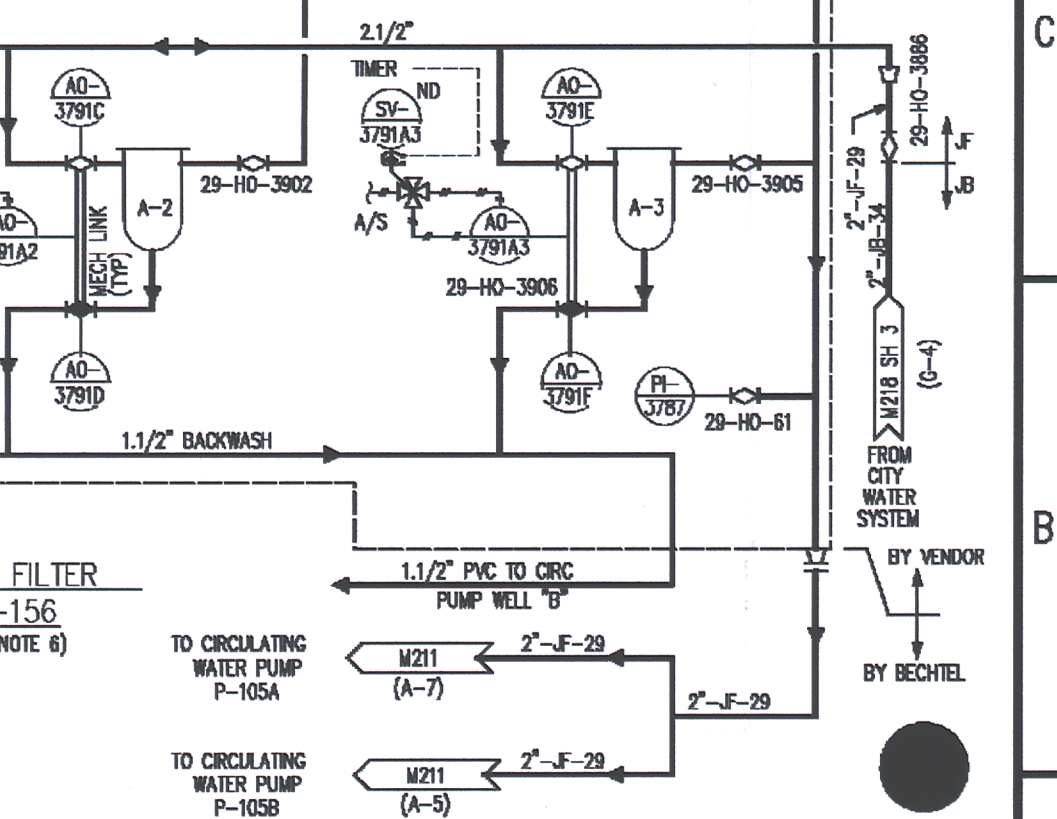
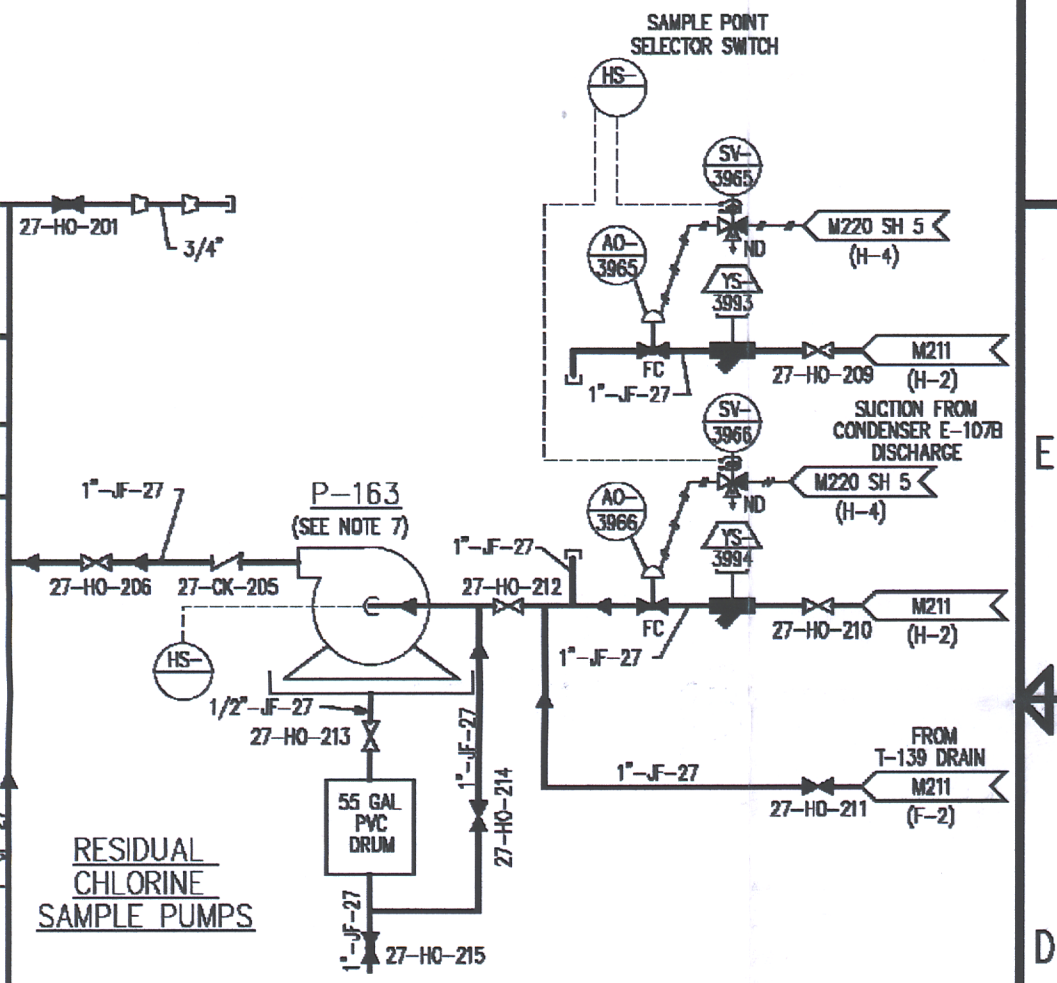





- NOTES
1. SERVICE WATER SYSTEM IS A CLASS I SYSTEM EXCEPT AS NOTED.
 2. DELETED
 3. ALL SALT WATER TEST CONNECTIONS ARE 2" FLANGED.
 4. LOCAL CONTROL SWITCH IS LOCATED ON ALTERNATE SHUTDOWN PANEL.  SHALL BE IN "REMOTE" TO OPERATE THE PUMP FROM CONTROL ROOM.
 5. 
 6. EACH SET OF AIR OPERATED VALVES (A0-3791A/B/A0-3791C/D, AND A0-3791B/E) ARE OPERATED BY ONE OPERATOR A0-3791-A/A0-3791-A2/AND A0-3791-A/E RESPECTIVELY. SEE ASSOCIATED DRAWING M176-7-1 FOR DETAIL.
 7. P-163 IS NO LONGER USED AND HAS BEEN ABANDONED IN PLACE WITH ALL ASSOCIATED EQUIPMENT, FITTINGS, AND VALVES.
 8. FTY-3803A AND FTY-3803B ARE PORTABLE FLOW COMPUTERS WHICH WILL BE INSTALLED TO SUPPORT SYSTEM PERFORMANCE TESTING ONLY. EITHER FLOW COMPUTER CAN BE RECONFIGURED AND USED TO SUPPORT TESTING WITH THE FLOW ELEMENTS FOR THE OTHER TRAIN.



7/1	400	REMOVED FOR PER 9/1-9/14 PER DEN 02972	LOC	-	ALJ (U)	SCALE	NAME	RESIGNED	RECIPIENT	DRAM C Y SURTEY	E
7/1	403	REMOVED FOR DEN 03-13593	LOC	-	ALJ (U)				Enterprise Nuclear Generation Company		
6/1	242	REMOVED FOR PDC 91-106 PER DEN 13648	LOC	-	ALJ (U)				PLGRM STATION		
6/1	245	REMOVED FOR DEN 92-045-25 PER DEN 13153	LOC	-	CTIS (U)				PLYMOUTH, MA		
6/1	246	REMOVED FOR DEN 01-17238	LOC	-	ALJ (U)				P & ID		
6/1	249	REMOVED FOR PDC 01-01-30 PER DEN 10678	LOC	-	ALJ (U)				SERVICE WATER SYSTEM		
6/1	245	REMOVED FOR DR 041591 PER DEN 17290	LOC	-	ALJ (U)						
6/1	245	REMOVED FOR DR 04159562 PER DEN 17221	LOC	-	ALJ (U)						
6/1	245	REMOVED FOR DR 041596 PER DEN 17204	LOC	-	ALJ (U)						
6/1	245	B-REMOVED PARTIALLY FOR DR 0412263 PER DEN 16700	LOC	-	ALJ (U)						
6/1	245	A-REMOVED PARTIALLY FOR DR 0414034 PER DEN 16700	LOC	-	ALJ (U)						
3/1	141	REVISIONS	BY	LOC	CHK	APP	Non Q	<input checked="" type="checkbox"/>	DRAWING NO.	REV	
									M212	SH 1	E87

SYSTEM INTENDED FUNCTION BOUNDARY				
<hr/>				
COMPONENTS SUBJECT TO AMR				
<hr/>				
	RESIDUAL HEAT REMOVAL SYSTEM AMRM-02			
	SALT SERVICE WATER SYSTEM AMRM-11			
	REACTOR BUILDING CLOSED COOLING WATER SYSTEM AMRM-12			