



**Initial Meeting with NRC
Bellefonte Project
February 7, 2006**

Meeting Agenda

- **Project Overview Information**
 - NuStart Bellefonte Project
 - NuStart Organization
 - Bellefonte site: Overview
- **Pre-Application Discussion**
 - Technology-specific activities and discussion
 - Topics anticipated in later pre-application discussions
 - NRC Support
- **Project-Specific Information**
 - Site Characterization Topics
 - Bellefonte Site Environmental Review
- **Wrap-up and Action Items**

Meeting Objectives

- **Introduce the NuStart Bellefonte project**
 - Overview
- **Discuss pre-application interaction needs**
 - Identify Applicant and NRC activities
 - Understand purpose and processes
 - Agree on framework for future discussions
- **Identify NRC preparations and organization to support Bellefonte Project**
- **Provide specific site information & schedule of activities**

Bellefonte Project Overview

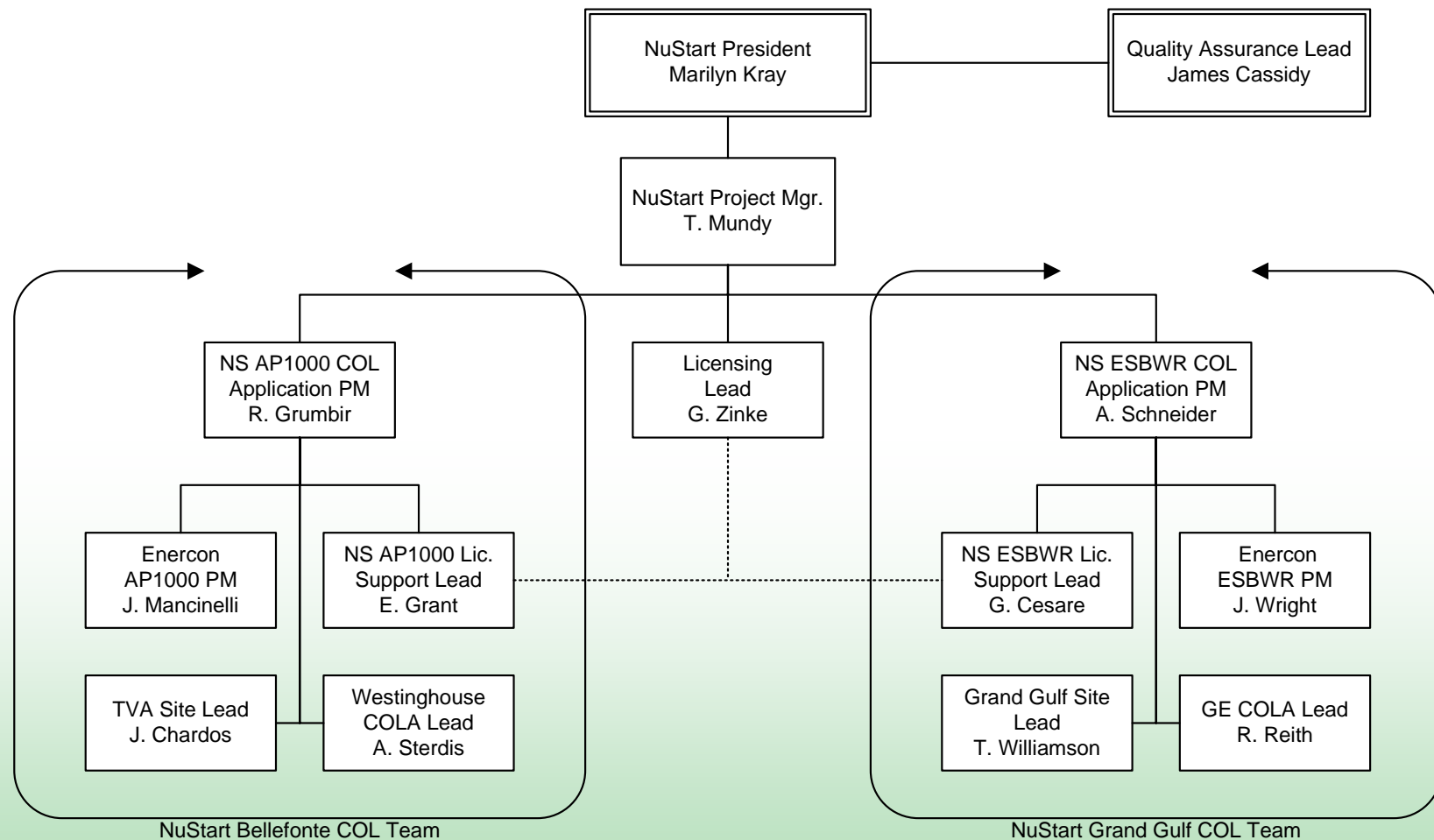
- **NuStart Project**
 - DOE-supported under cooperative agreement
- **Bellefonte site selected**
 - TVA owned; no operating units
 - No Early Site Permit
 - Existing Construction Permit (for 2 B&W units)
- **COLA Based on**
 - AP1000 Technology
 - Westinghouse certified design
 - Application for two units
- **COLA submittal target**
 - Fourth Quarter 2007

NuStart Project Organization

NuStart

- **Primary Contacts identified in letter dated November 17, 2005 (ML053270434)**
- **Other Key Project Participants**
 - Westinghouse
 - TVA
 - Southern Company (MOU with TVA)
 - Enercon Services and key subcontractors:
 - Burns & Roe
 - Williams Lettis & Associates
 - MACTEC

NuStart Project Organization



-
- This map displays the Atlanta, Georgia metropolitan area and its surrounding regions. Major highways are shown in red, including I-75, I-85, I-20, and I-95. The map also shows the locations of major cities such as Atlanta, Marietta, Kennesaw, Roswell, and Decatur. The Chattahoochee River is depicted in blue, flowing through the area. An inset map in the bottom left corner provides a broader geographical context, showing the location of the study area within the Southeastern United States, bordered by Georgia, Alabama, and Florida.

Bellefonte Site Overview

- 10 mile radius
- NE Alabama
- Scottsboro, AL
- Tennessee River
- Guntersville Lake



Bellefonte Site Overview



Bellefonte Site Overview



Bellefonte Site Overview

- **Use of some Bellefonte existing structures probable**
 - Cooling towers
 - Intake structure
 - Switchyard
 - Tower (with new meteorological instruments)
 - Other misc. structures (machine shop, storage, etc.)
- **Status of TVA site activities**
 - Bellefonte Construction Permit (CP) Docket Nos. 50-438 & 50-439
 - TVA has notified NRC of intent to request CP termination

NRC Pre-Application Discussion Topics

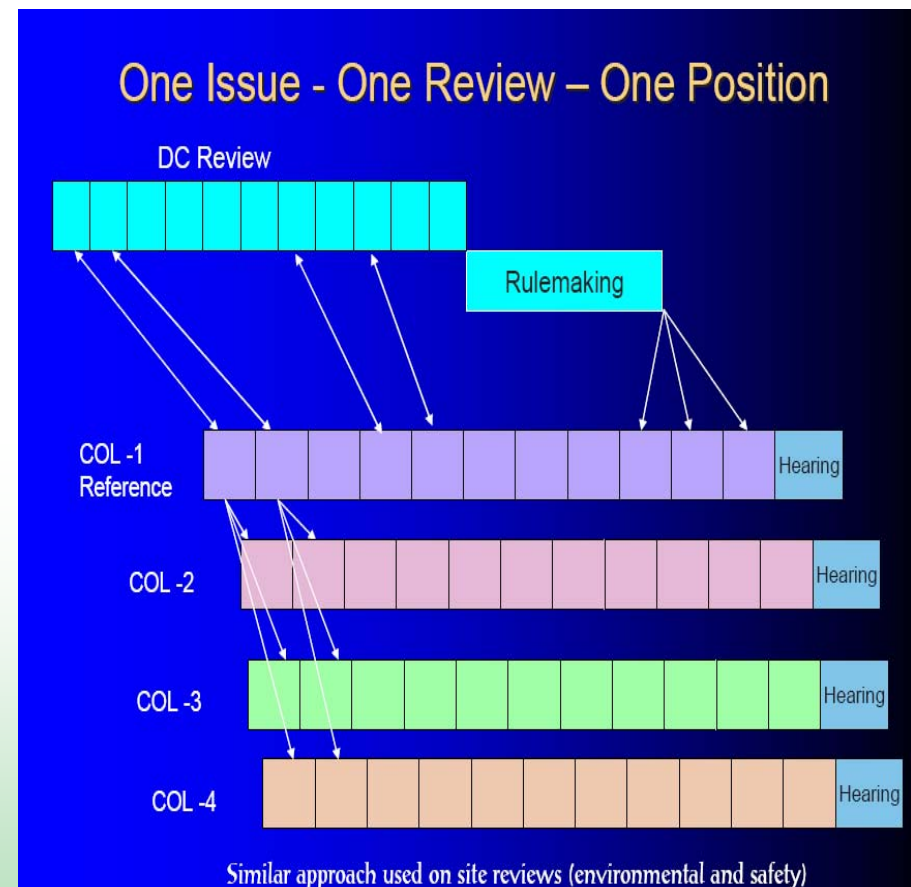
- **Design-Centered Review Approach**
 - ML0535300200 (December 13, 2005)
- **NRC/Combined License Applicant Pre-Application Interactions**
 - ML053360496 (December 2, 2005)
- **Generic Topic Workshops**
- **Other Potential Topics**

NRC Pre-Application Discussion Topics (cont'd)

■ NPOC – NRC Dec 13

Meeting (ADAMS ML0535300200)

- As presented by NRC (at right)
- Keys to Success
 - One Issue, One Review, One Position
 - Early Resolution of Issues
 - Standardized Approach



NRC Pre-Application Discussion Topics (cont'd)

- **Implementing “Standard” Concept for the Bellefonte COL Application**
 - Goal is to achieve resource savings (NRC and Industry)
 - Standard content options
 - Format (level of detail)
 - Common sections for specific reactor technology (AP1000)
 - Common sections for all reactor technologies
 - Applicant/site-specific sections
 - Methodology

NRC Pre-Application Discussion Topics (cont'd)

- **Standardization (continued)**

- Guidance

- DG-1145 (COL Applications for Nuclear Power Plants)
 - NEI-04-01
 - NUREG-0800 (SRP sections)
 - NUREG-1555

- Approval method options

- Topical SER, endorsement (by RG), rulemaking, previous COL/SER, etc.

- Reference method options

- Reference, incorporate by reference, repeat text, etc.

- Achieving finality

NRC Pre-Application Discussion Topics (cont'd)

(Based on NRC list provided on December 2, 2005 - ML053360496)

- **Potential Deviations from Certified Design**
- **DAC Completion Process and Schedules**
 - e.g., Control room design
- **COL Action Item Resolutions**
 - NRC criteria
 - Benefits
- **ESP Compliance (Not Applicable; No ESP)**
- **Proposed Regulation Exemptions**
- **Potential Policy Issues**

NRC Pre-Application Discussion Topics (cont'd)

- **Deviations from Staff guidance**
 - Criteria
- **Fabrication Schedule**
- **Site Characterization Activities Schedule**
 - (*See latter portion of presentation*)
- **Plans for LWA**
- **Interfacing with Other Regulatory Agencies**
 - Emergency Planning
 - Environmental Activities
 - Permitting
 - Other

NRC Pre-Application Discussion Topics (cont'd)

- **Quality Assurance Plans**
 - QA for COLA preparation - ~1 month
 - Submittal mechanism
 - Design and Construction QA (with COLA or Topical Report)
 - Operations QA (with COLA or Topical Report)
- **Relationship with Other Licensing Activities**
 - Not Applicable – No existing applications
- **Environmental Topics**
 - NRC to identify
 - Schedule
- **Other?**

Other Pre-Application Discussion Topics

- **Environmental Report**
 - Ecological studies (onsite habitat review)
- **Site Interface Issues**
 - Seismic
 - Other
- **DG-1145**
 - Draft Table of Contents
 - Workshops
- **Standard Review Plan Revision**
 - Evaluate SRP in effect 6 mo. prior to docketing COLA
 - 50.34(h) cutoff is second quarter 2007
 - Schedule Impact on “Quality” – many late for consideration
- **NRC Acceptance Review Checklist**

Other Pre-Application Discussion Topics (cont'd)

- **Proposed Rulemaking to Revise Part 52**
 - Workshop scheduled
- **Part 52 Appendix D Final Rule Clarifications**
 - Incorporation by reference (DCD)
 - “Include” vs “Physically Include”
- **Materials Anticipated to be Requested**
- **NRC Positions Not Documented in Guidance**
- **COL Application Section Content**
- **Expectations for Timely Mutual Communication**

Bellefonte Site Activities

- **Near term activities**
 - Geotechnical subsurface characterization
 - Well placement, borings and soundings
 - Late March through June 2006
 - Meteorological data
 - Existing tower being fitted with meteorological instruments
 - One year per RS-002 (beginning ~ May)

Bellefonte Environmental Reviews

- **COLA Environmental Report Basis**
 - Utilize
 - Previous environmental evaluations
 - Previous reviews (e.g., EIS for CP)
 - Update previous information (where necessary)
 - Perform additional evaluations
 - As necessary to meet current guidance
- **TVA Environmental Impact Statement**
 - Required by regulations
 - Possible “tiering” with NRC EIS and/or other federal agencies (e.g., FERC)

Other Interaction Needs - NRC Activities

- **Principal Contacts and Project Manager assignment**
- **Site Visits**
 - Other near term
- **Inspections**
 - Subject areas
 - Timing
- **Public Meeting (near site)**
 - Topics
 - Coordination with NuStart
 - When and Where

Summary

- **General Project Overview**
- **Future Interactions**
 - Dates
 - Topics
- **Activity schedule (near term)**
 - Site characterization
 - NRC visits & inspections
- **Actions**