

**COMMISSIONER
FORREST J. REMICK**

NRC

**JUNE 18, 1993
HEMATITE, MISSOURI**

*R3/D-2-52
release
CEAB/6/83
June - file
ABB/CE*

W-9

ABB Combustion Engineering Nuclear Power

ABB
ASEA BROWN BOVERI

ABB COMBUSTION ENGINEERING NUCLEAR FUEL

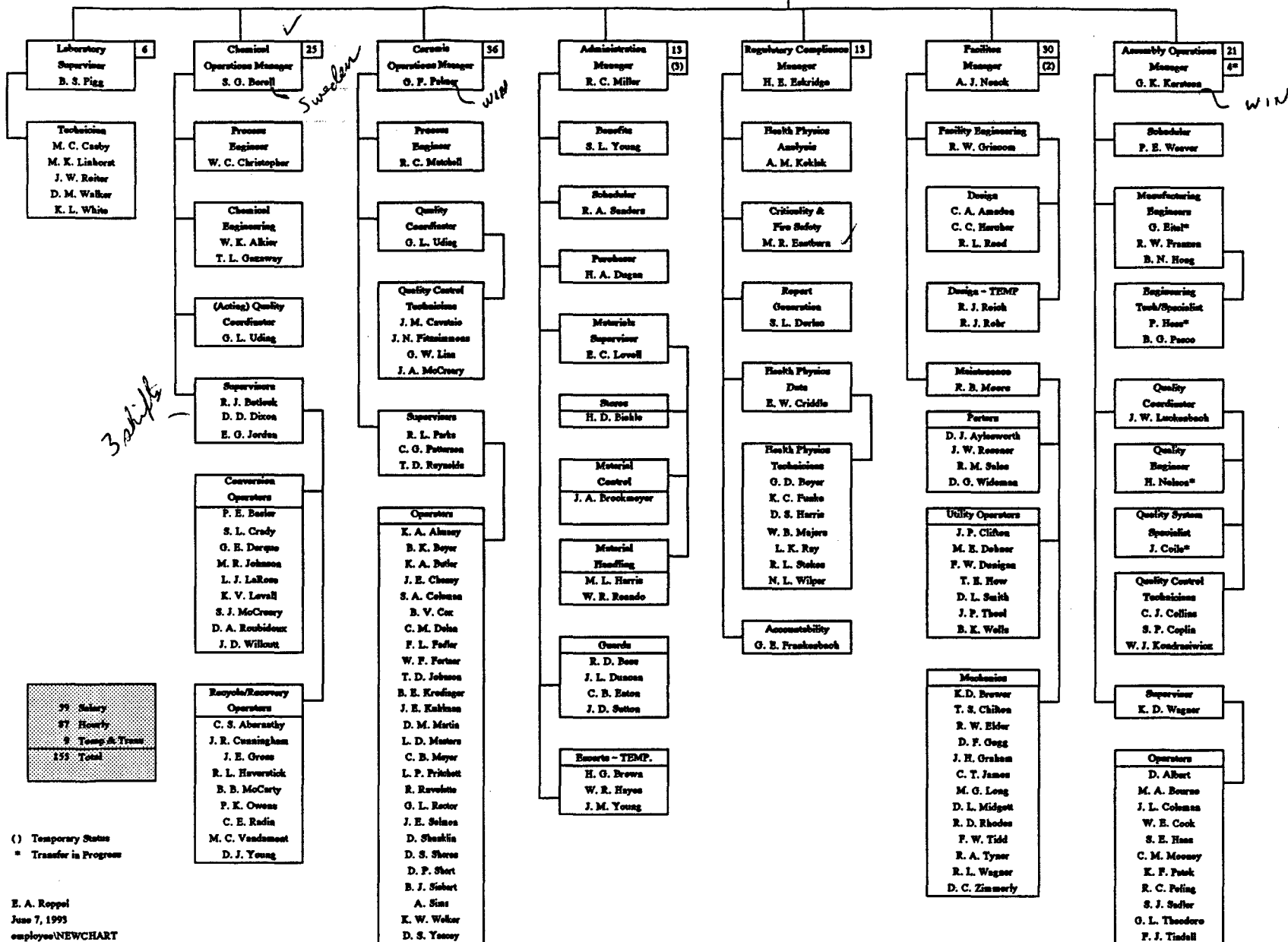
NUCLEAR FUEL MANUFACTURING

ORGANIZATION CHART

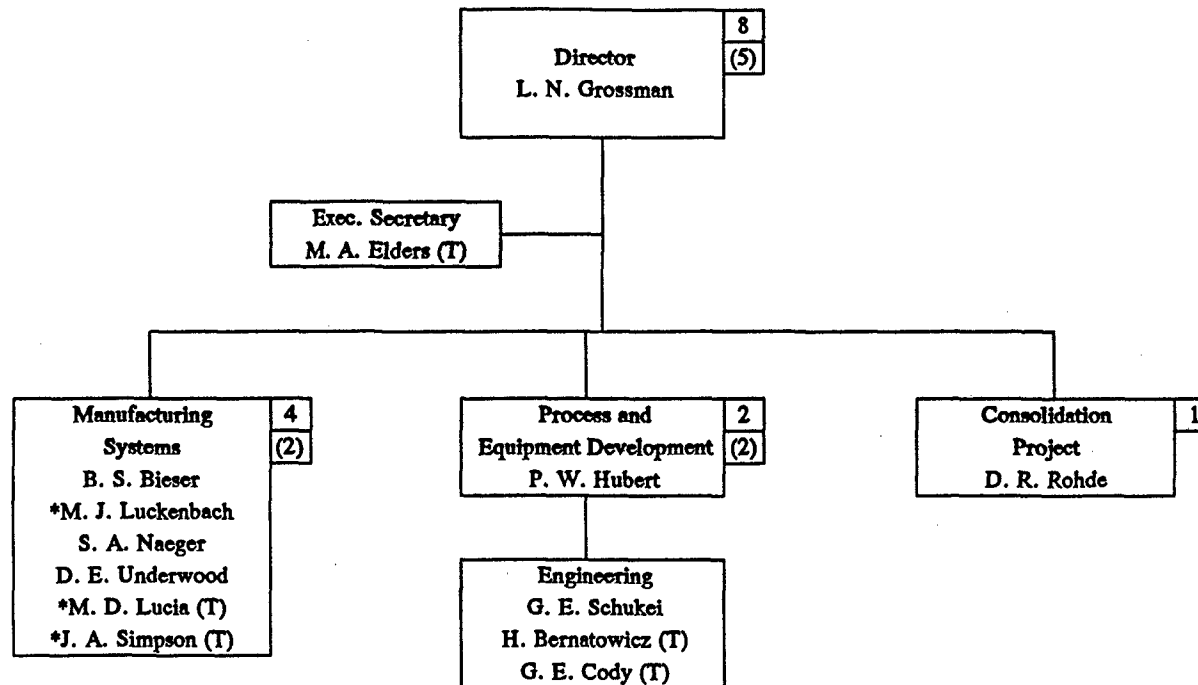
HEMATITE, MISSOURI

Plant Manager
Hematite
J. A. Rode

Admin. Assistant
E. A. Roppel



**ABB COMBUSTION ENGINEERING NUCLEAR FUEL
MANUFACTURING TECHNOLOGY
ORGANIZATION CHART
HEMATITE, MISSOURI**

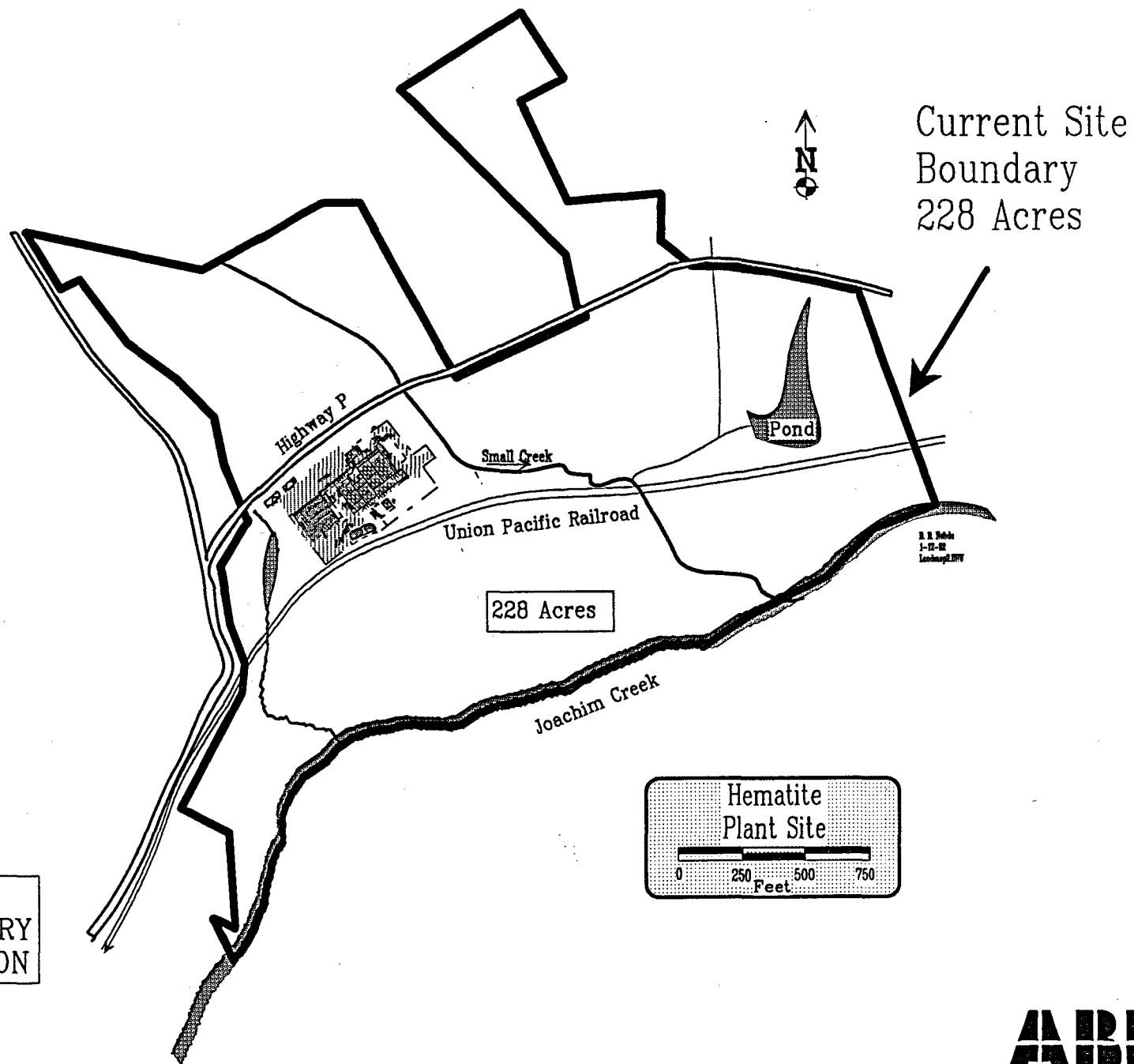


larger projects

8	Salary
5	Temporary
13	Total

(T) = Temporary
* = Located in Windsor, CT

E. A. Roppel
June 7, 1993
employee\5402CHART



~~ABB
PROPRIETARY
INFORMATION~~



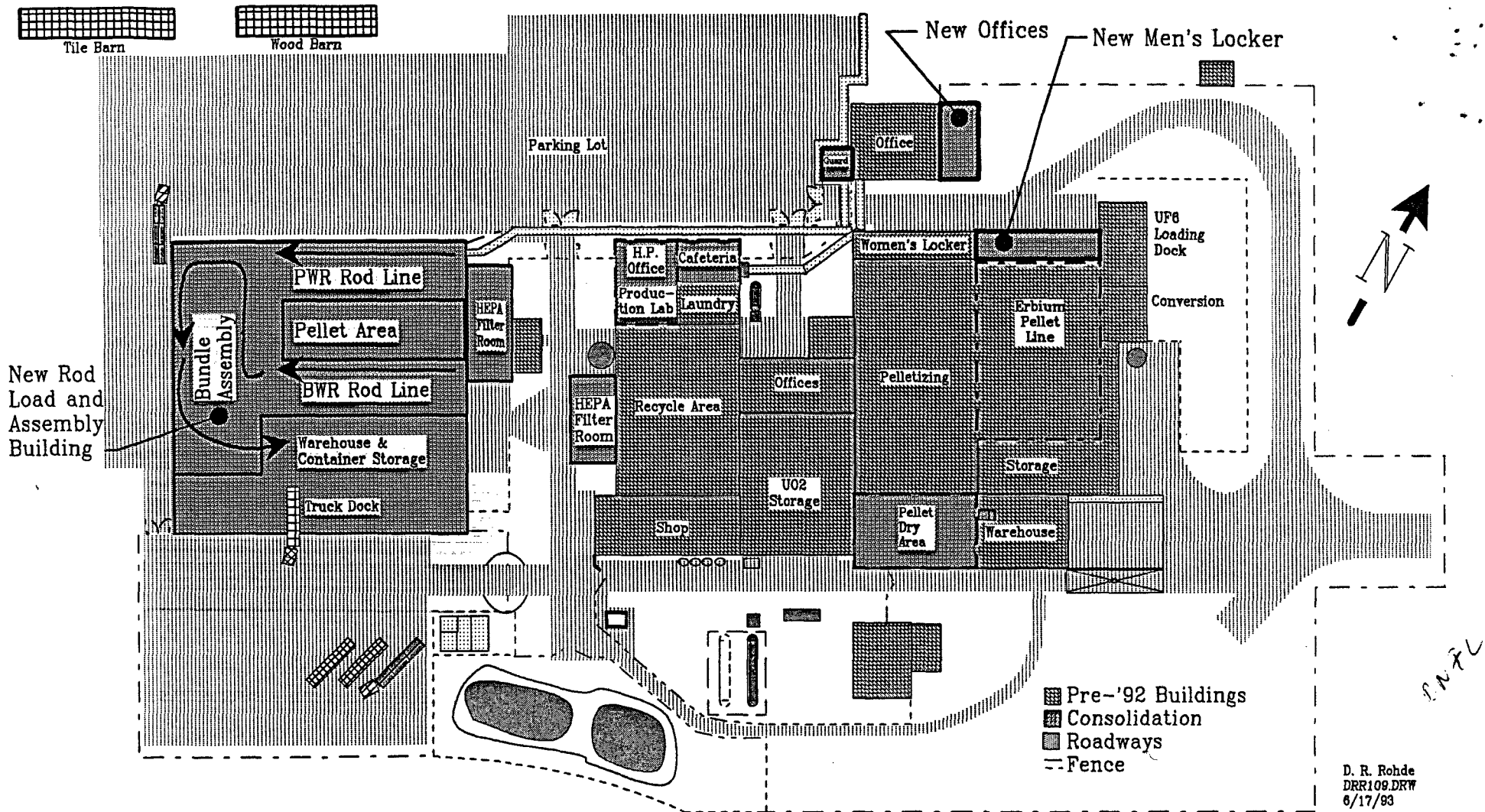
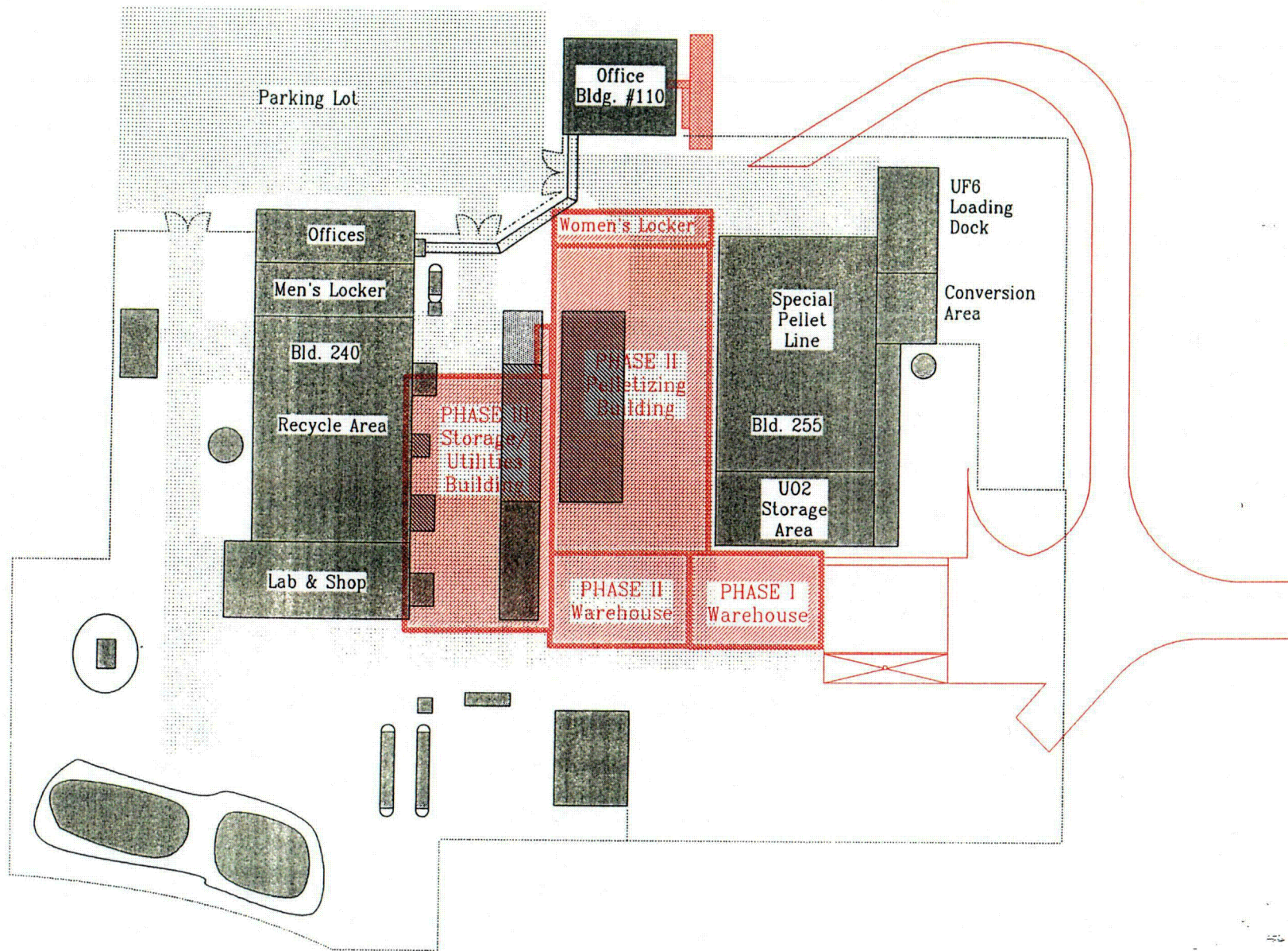


Figure 5. Hematite Site Layout



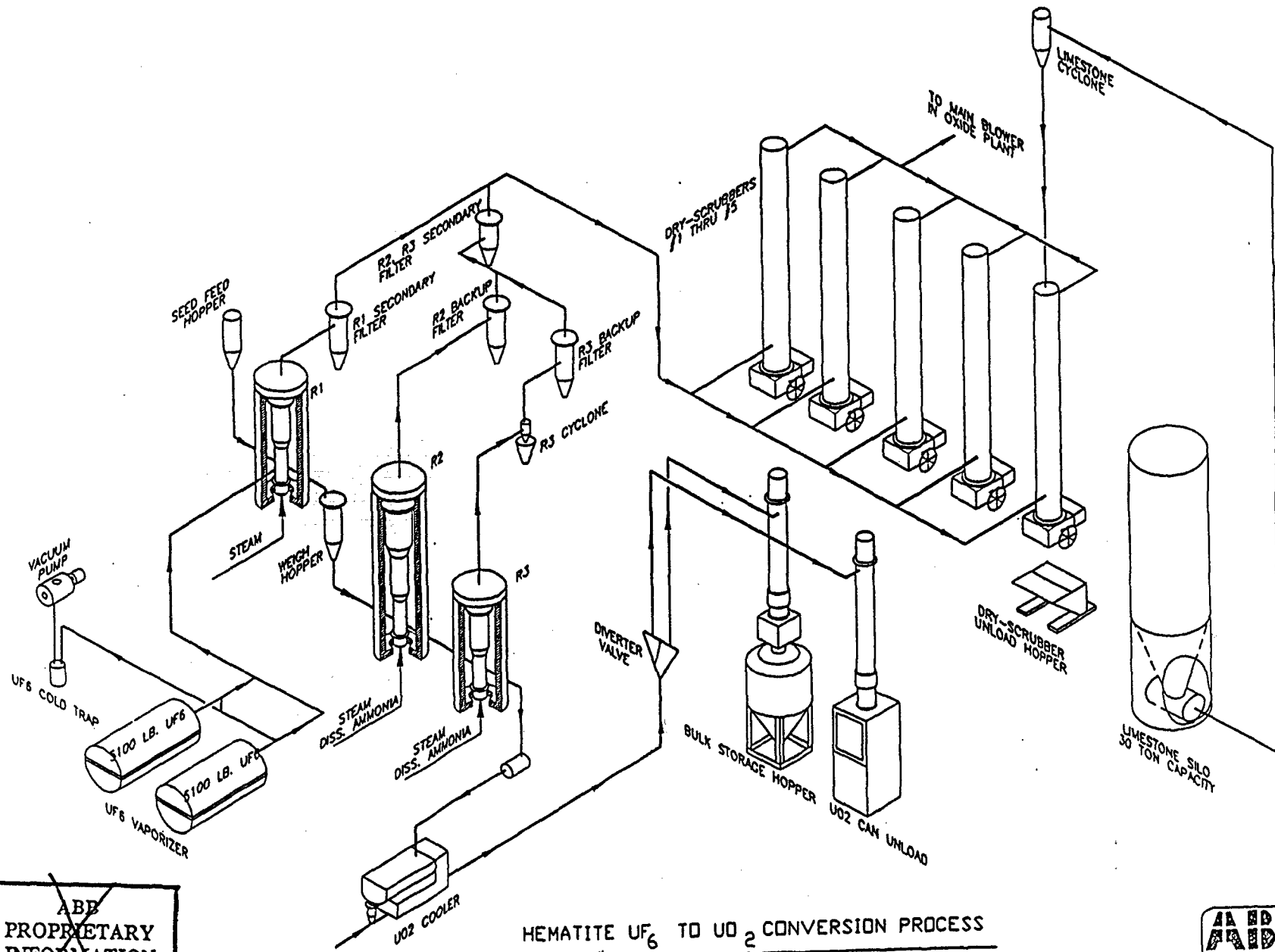
Hematite Plant Site

Before Revitalization
 After Revitalization

D. R. Rohde
 jim2.drw
 5/22/91

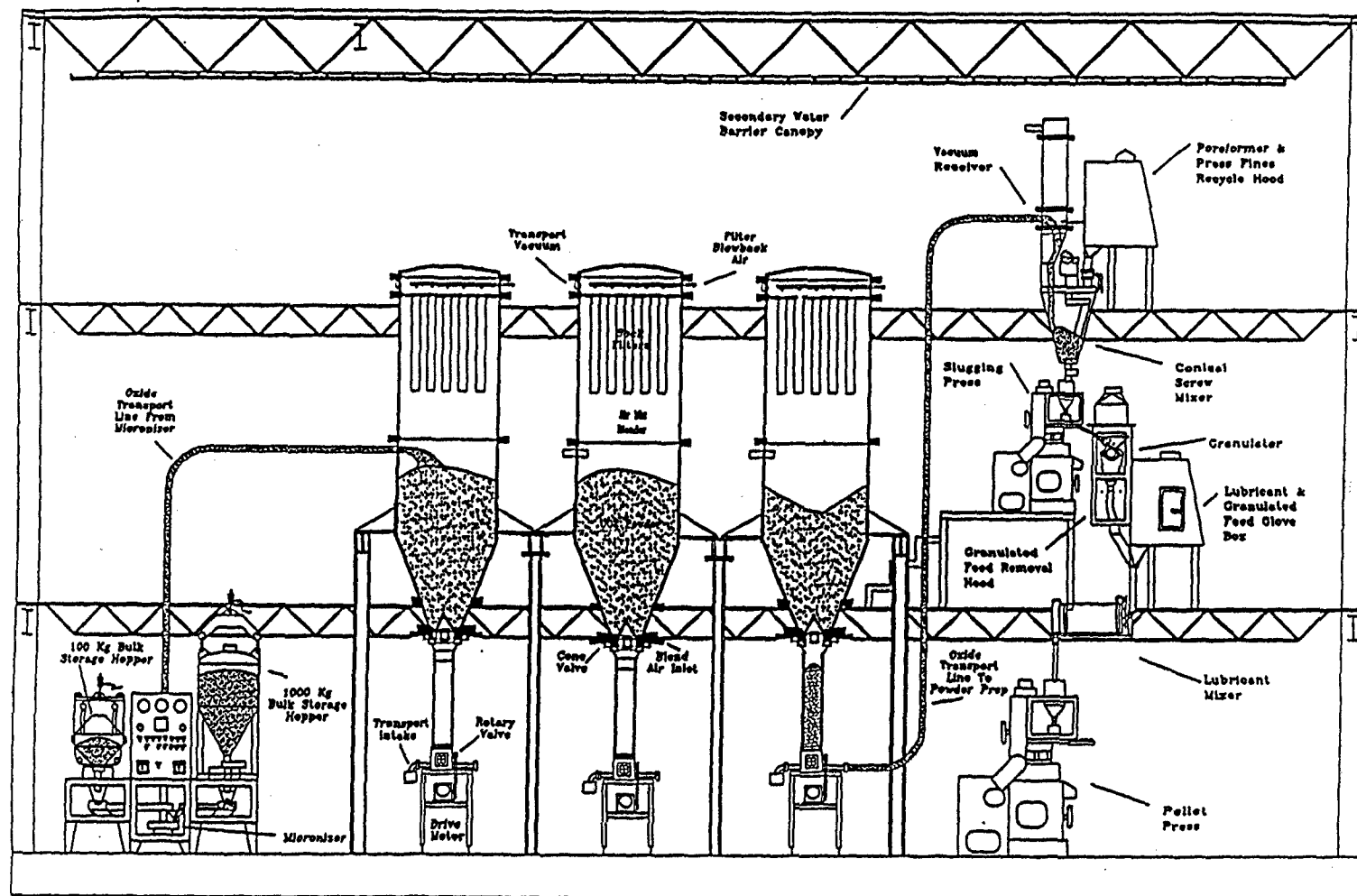
CO2

~~ABB
PROPRIETARY
INFORMATION~~



HEMATITE UF_6 TO UO_2 CONVERSION PROCESS

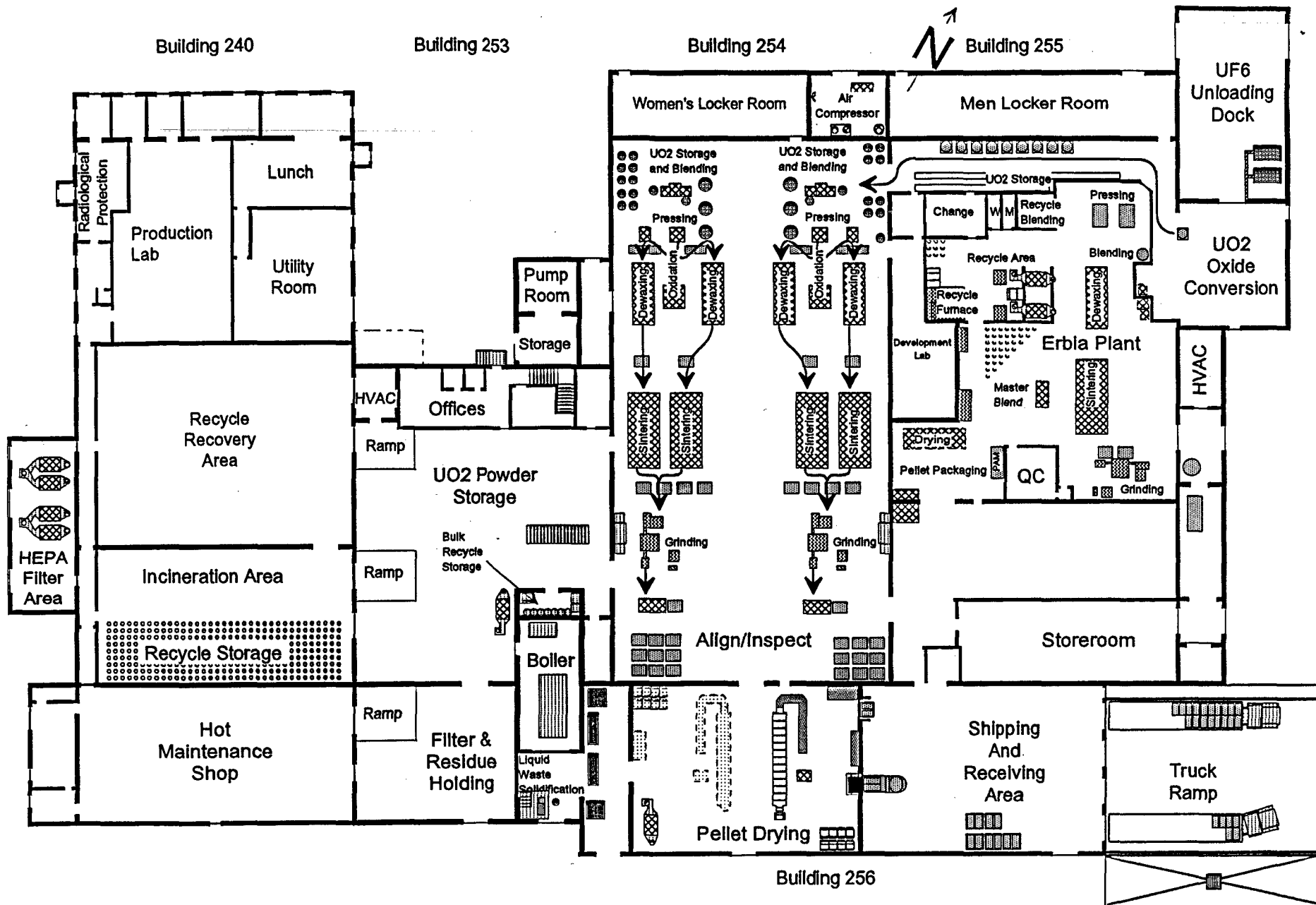
AA HEDB
AIDED
ASEA BROWN BOVERI



Hematite Micronizing, Blending and Press Feed Preparation

~~ABB
PROPRIETARY
INFORMATION~~

ABB
ASEA BROWN BOVERI



Hematite Equipment Layout

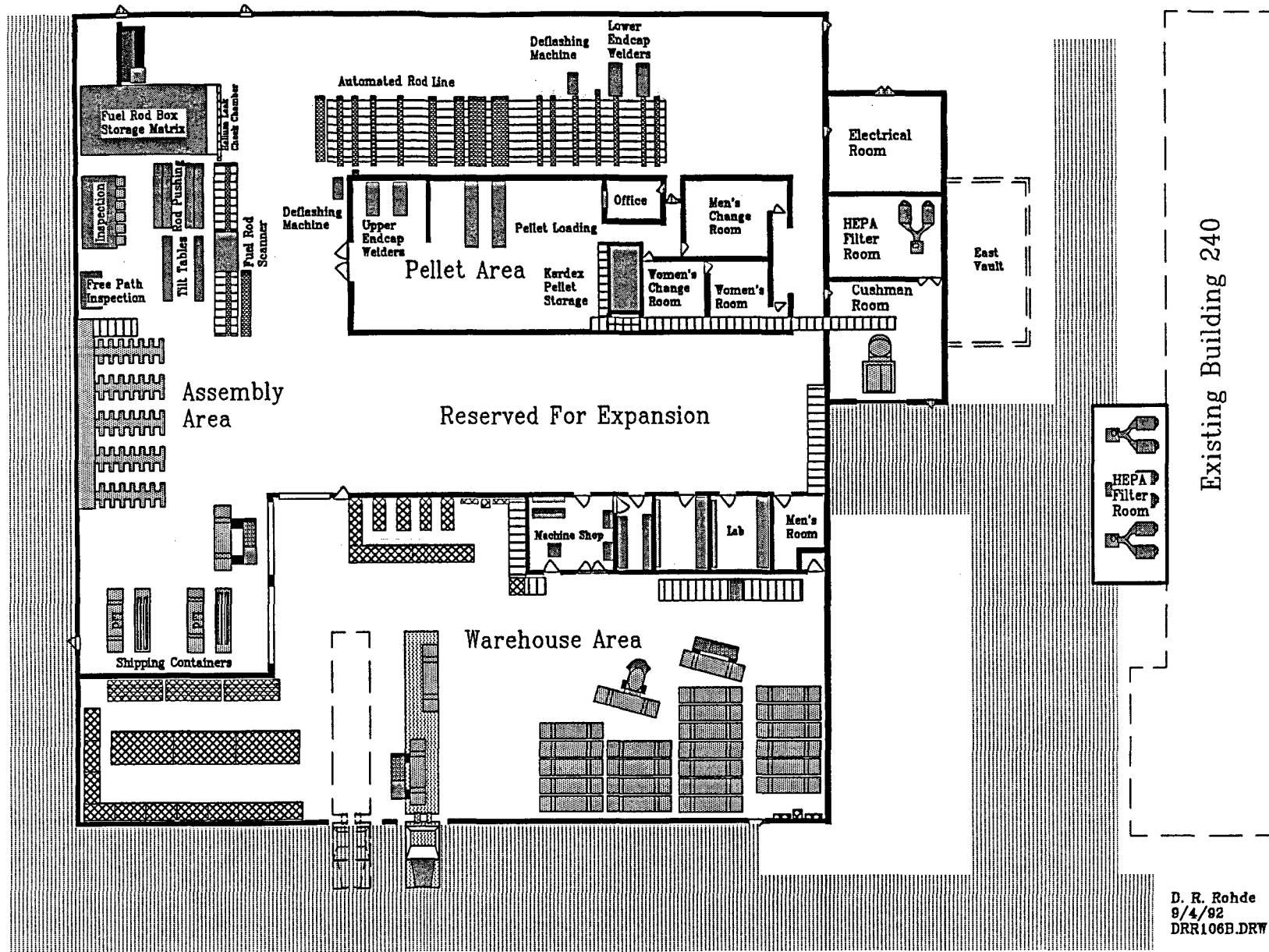


Figure 6. New Rod and Bundle Assembly Layout At Hematite