

Appendix H

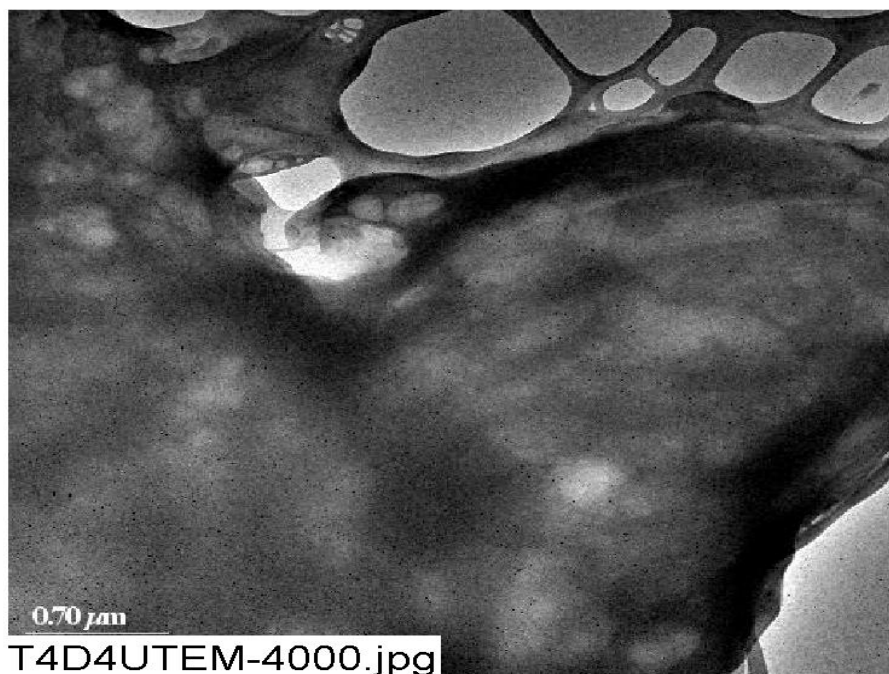
TEM Data for Test #4 Solution Samples

List of Figures

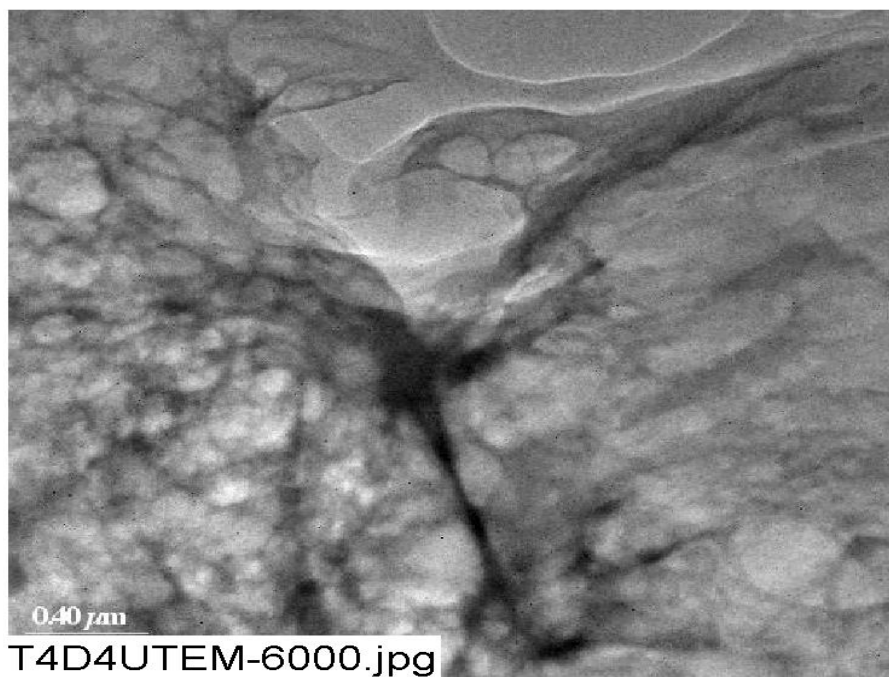
Figure H-1: TEM magnified 4,000 times for one Test #4 Day-4 unfiltered sample location. (T4D4UTEM-4000.jpg).....	H-3
Figure H-2: TEM magnified 6,000 times for one Test #4 Day-4 unfiltered sample location. (T4D4UTEM-6000.jpg).....	H-3
Figure H-3: TEM energy-dispersive x-ray spectrum for a Test #4 Day-4 unfiltered sample. The copper peak is likely from the copper sample holder for TEM analysis. (T4D4UEDS.jpg).....	H-4
Figure H-4: TEM magnified 4,000 times for one Test #4 Day-15 unfiltered sample location. (T4D15UTEM-4000.jpg).....	H-4
Figure H-5: TEM magnified 6,000 times for one Test #4 Day-15 unfiltered sample location. (T4D15UTEM-6000.jpg).....	H-5
Figure H-6: TEM energy-dispersive x-ray spectrum for a Test #4 Day-15 unfiltered sample. The copper peak is likely from the copper sample holder for TEM analysis. (T4D15UEDS.jpg).....	H-5
Figure H-7: TEM magnified 4,000 times for one Test #4 Day-30 unfiltered sample location. (T4D30UTEM-4000.jpg).....	H-6
Figure H-8: TEM magnified 6,000 times for one Test #4 Day-30 unfiltered sample location. (T4D30UTEM-6000.jpg).....	H-6
Figure H-9: TEM energy-dispersive x-ray spectrum for a Test #4 Day-30 unfiltered sample. The copper peak is likely from the copper sample holder for TEM analysis. (T4D30UEDS.jpg).....	H-7

This appendix presents TEM images and EDS results for Test #4 Day-4, Day-15, and Day-30 unfiltered solution samples. The unfiltered solution samples were extracted from the tank directly. A tiny drop of the testing solutions was transferred to a copper mesh followed by drying in air for TEM analysis. The TEM and EDS results were obtained on June 27, 2005.

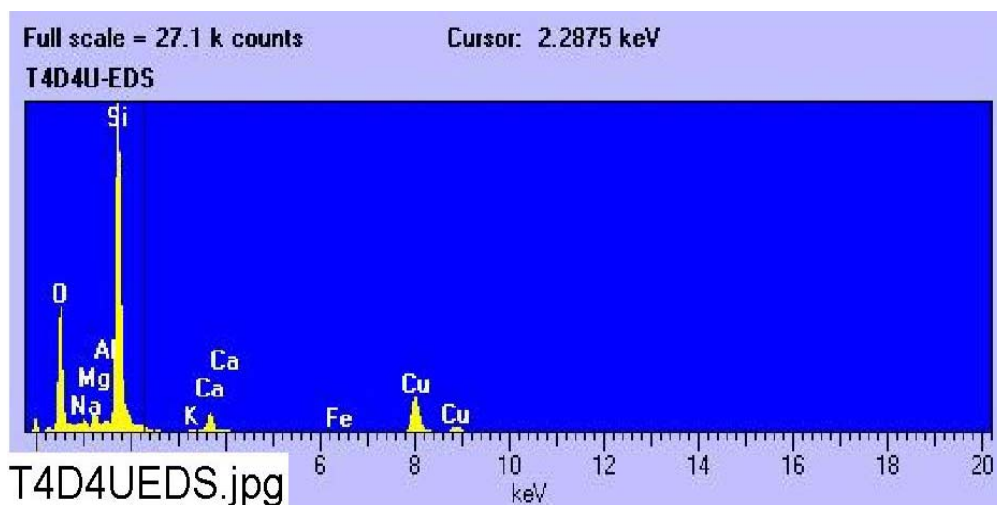
This page is intentionally blank.



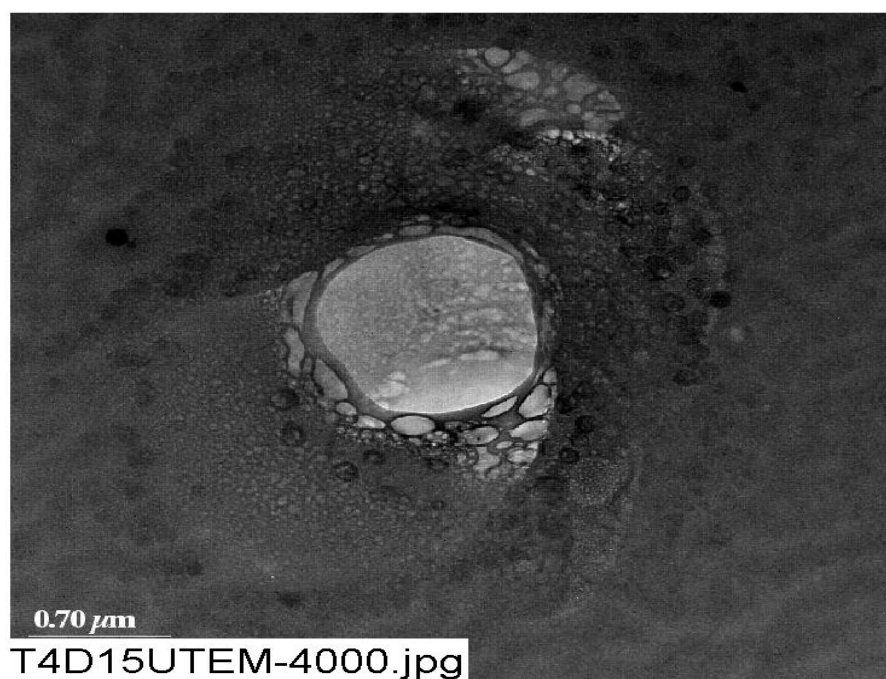
**Figure H-1: TEM magnified 4,000 times for one Test #4 Day-4 unfiltered sample location.
(T4D4UTEM-4000.jpg)**



**Figure H-2: TEM magnified 6,000 times for one Test #4 Day-4 unfiltered sample location.
(T4D4UTEM-6000.jpg)**



**Figure H-3: TEM energy-dispersive x-ray spectrum for a Test #4 Day-4 unfiltered sample.
The copper peak is likely from the copper sample holder for TEM analysis.
(T4D4UEDS.jpg)**



**Figure H-4: TEM magnified 4,000 times for one Test #4 Day-15 unfiltered sample location.
(T4D15UTEM-4000.jpg)**

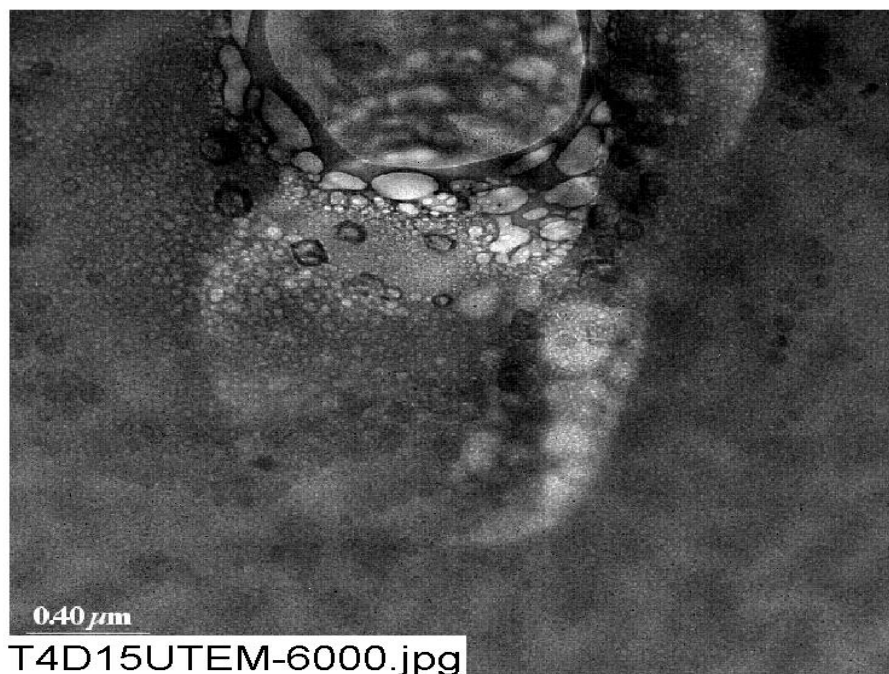


Figure H-5: TEM magnified 6,000 times for one Test #4 Day-15 unfiltered sample location.
(T4D15UTEM-6000.jpg)

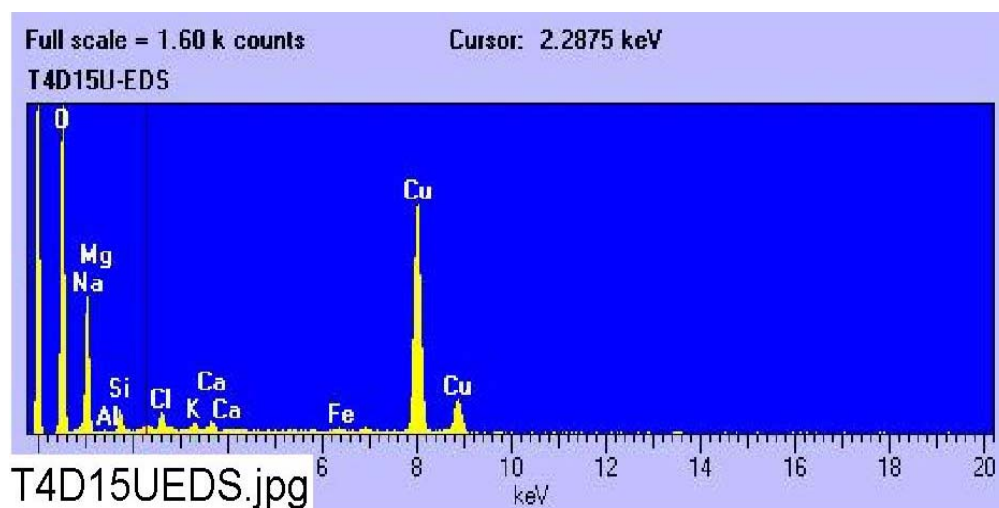
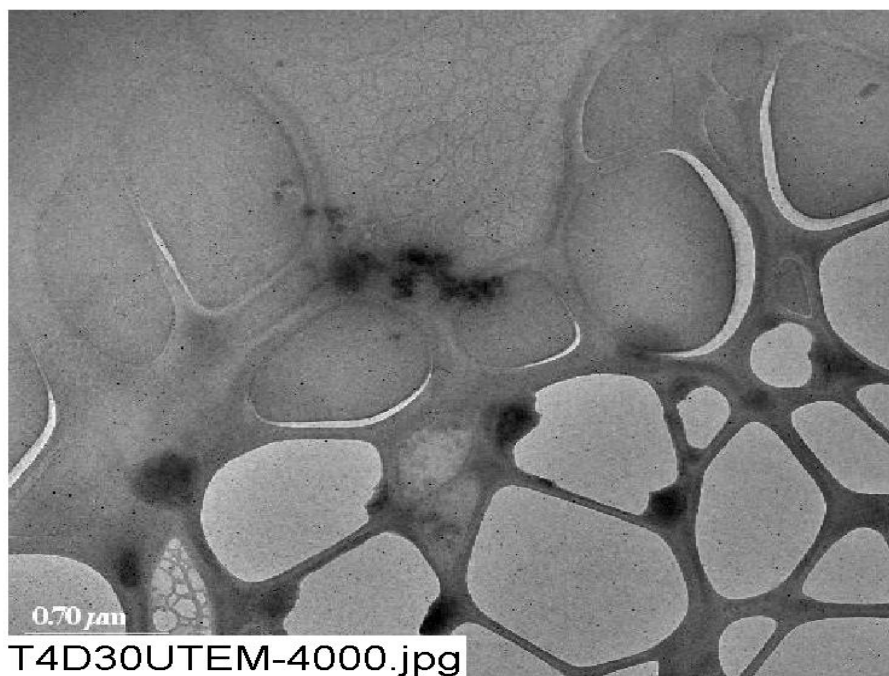
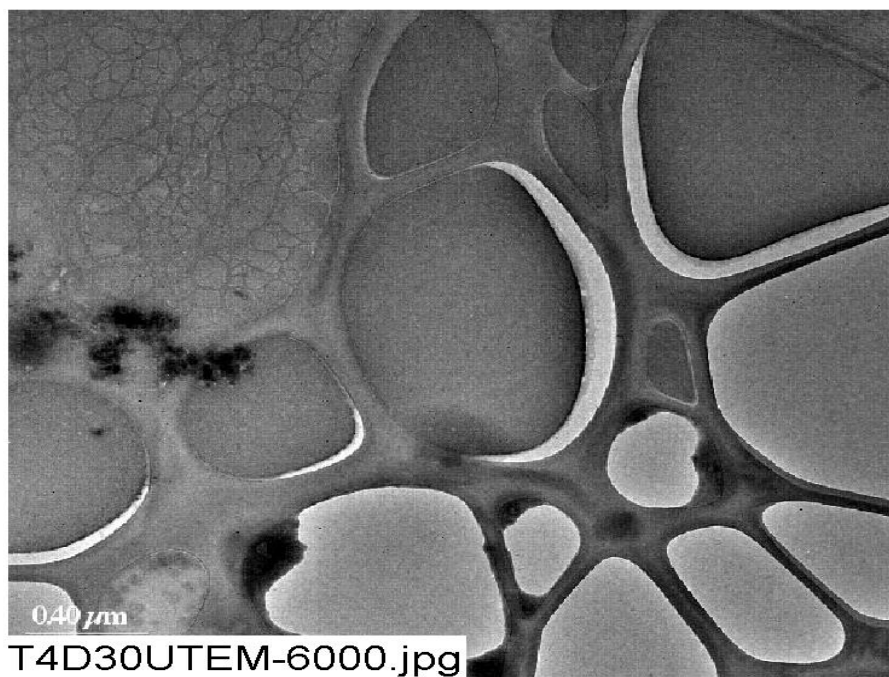


Figure H-6: TEM energy-dispersive x-ray spectrum for a Test #4 Day-15 unfiltered sample.
The copper peak is likely from the copper sample holder for TEM analysis.
(T4D15UEDS.jpg)



**Figure H-7: TEM magnified 4,000 times for one Test #4 Day-30 unfiltered sample location.
(T4D30UTEM-4000.jpg)**



**Figure H-8: TEM magnified 6,000 times for one Test #4 Day-30 unfiltered sample location.
(T4D30UTEM-6000.jpg)**

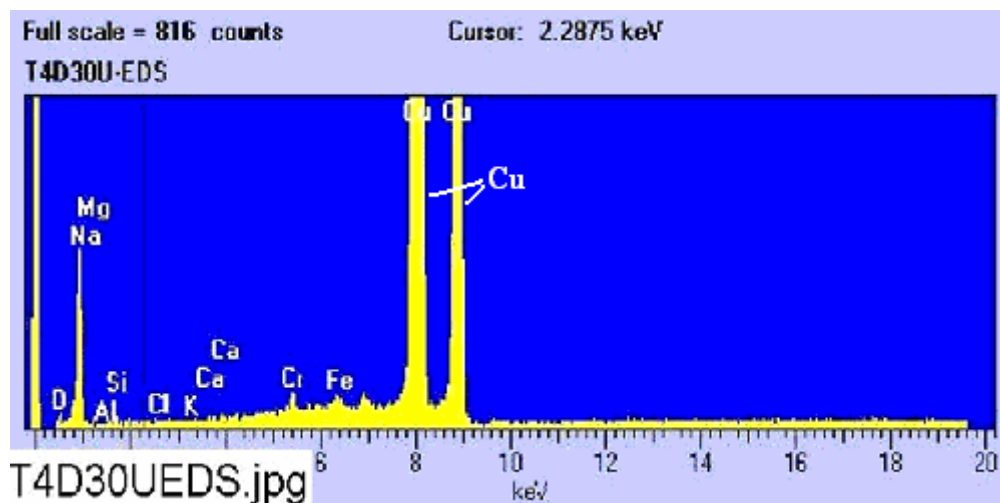


Figure H-9: TEM energy-dispersive x-ray spectrum for a Test #4 Day-30 unfiltered sample.
The copper peak is likely from the copper sample holder for TEM analysis.
(T4D30UEDS.jpg)