

## Appendix C7

### ESEM/EDS Data for Test #4 Day-30 Birdcage Fiberglass

#### List of Figures

Figure C7-1: Environmental SEM image magnified 100 times for a Test #4 Day-30 exterior fiberglass sample within the birdcage. (T4D30BX1.jpg) .....	C7-4
Figure C7-2: Annotated environmental SEM image magnified 500 times for a Test #4 Day- 30 exterior fiberglass sample within the birdcage. (t4d30bx4.jpg).....	C7-4
Figure C7-3: EDS counting spectrum for the particulate deposits on fiberglass shown in Figure C7-2. (T4D30bx3.jpg) .....	C7-5
Figure C7-4: Environmental SEM image magnified 100 times for a Test #4 Day-30 interior fiberglass sample within the birdcage. (t4d30bi5.jpg).....	C7-5
Figure C7-5: Environmental SEM image magnified 500 times for a Test #4 Day-30 interior fiberglass sample within the birdcage. (t4d30bi6.jpg).....	C7-6
Figure C7-6: Environmental SEM image magnified 500 times for a Test #4 Day-30 interior fiberglass sample within the birdcage. (t4d30bi7.jpg).....	C7-6

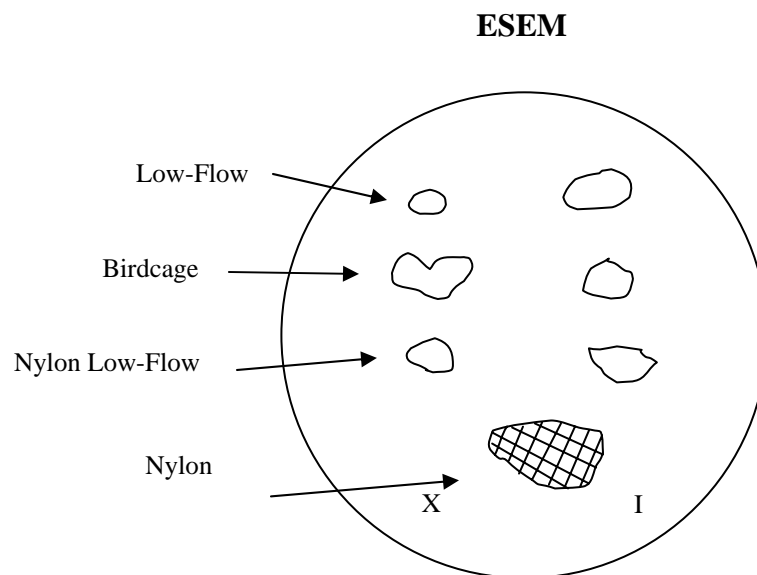
This page is intentionally blank.

This appendix lists the ESEM/EDS results for the fiberglass samples within a birdcage submerged in the testing solution. The purpose of this analysis was to determine the degree and the extent that particulate debris migrated and attached on fiberglass. In this appendix, the fiberglass samples within the birdcage were extracted on June 23, 2005, the date the test was shut down. Both exterior and interior fiberglass samples were examined. Environmental SEM (ESEM) was employed to analyze the hydrated fiberglass samples without any coating under a low vacuum condition (i.e., 80 Pa), to minimize the modification of the fiberglass samples through drying process. ESEM/EDS results of the Test #4 Day-30 birdcage fiberglass samples were obtained on June 24, 2005.

## Transcribed Laboratory Log

Laboratory session from June 24, 2005.

Test #4 Day-30 Birdcage Fiberglass.

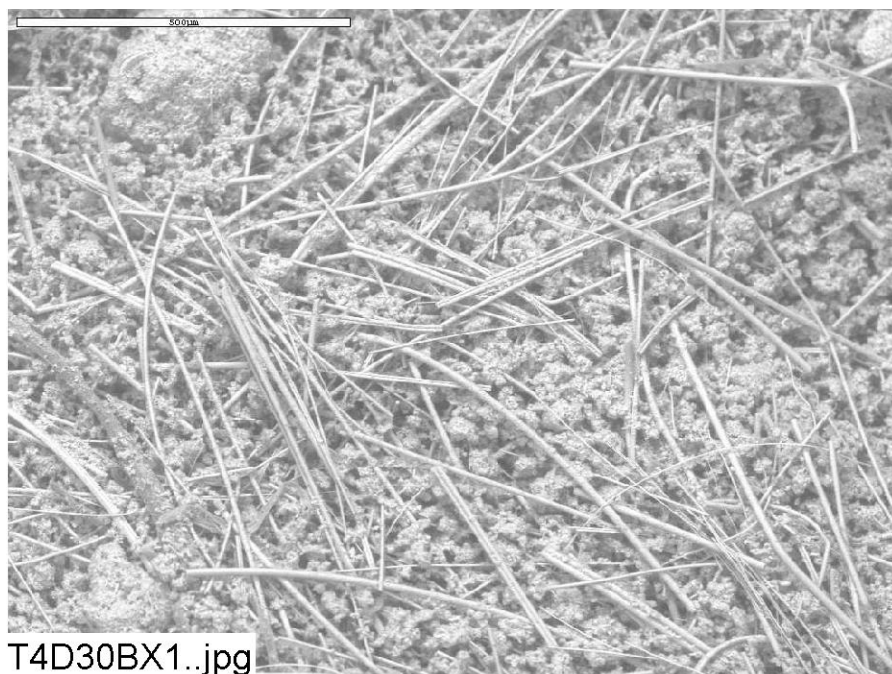


### Birdcage Exterior

Image:	T4D30BX1	100 ×	ESEM image	Figure C7-1
	t4d30bx4	500 ×	ESEM annotated image	Figure C7-2
EDS:	t4d30bx3		EDS on particles in t4d30bx4	Figure C7-3

### Birdcage Interior

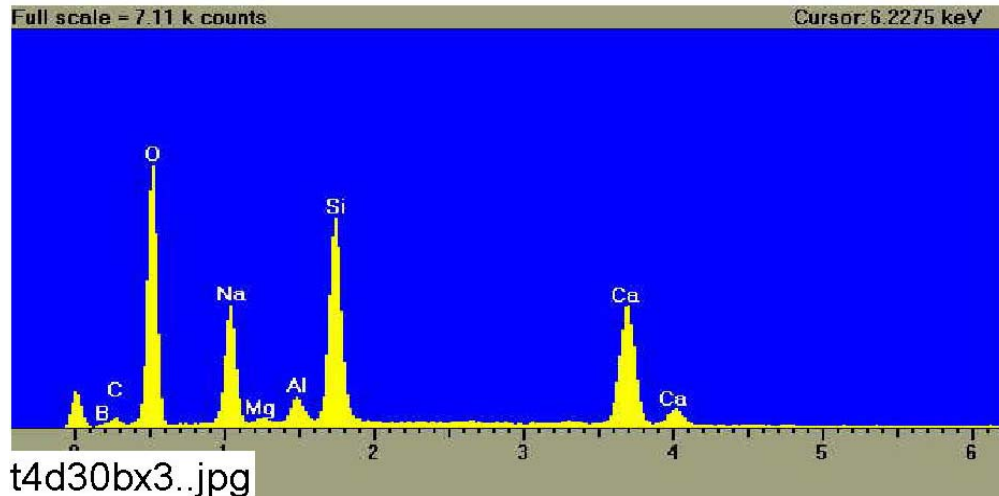
Image:	t4d30bi5	100 ×	ESEM image of fiberglass	Figure C7-4
	t4d30bi6	500 ×	ESEM image higher magnification	Figure C7-5
	t4d30bi7	500 ×	ESEM image	Figure C7-6



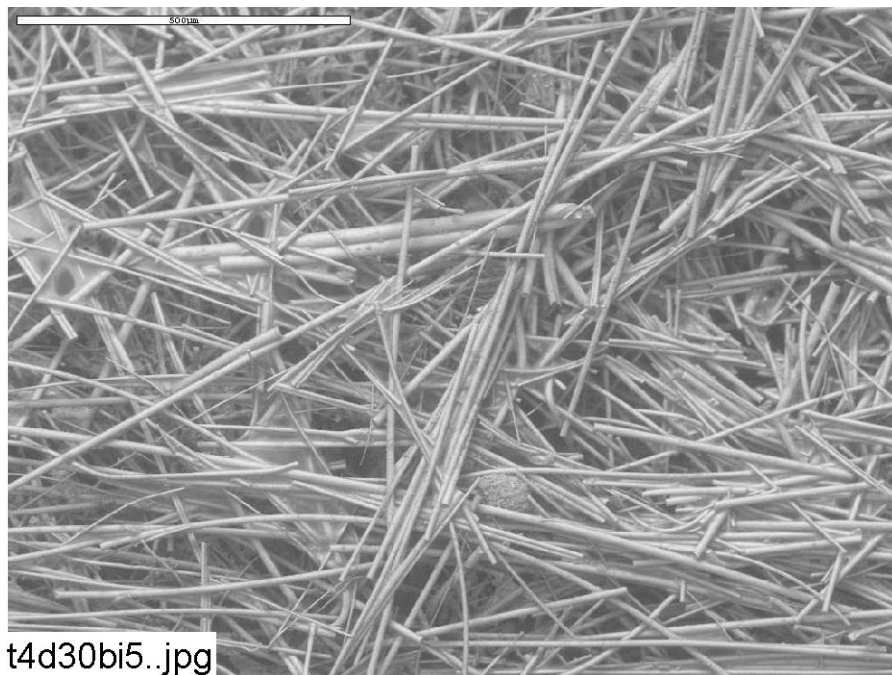
**Figure C7-1: Environmental SEM image magnified 100 times for a Test #4 Day-30 exterior fiberglass sample within the birdcage. (T4D30BX1.jpg)**



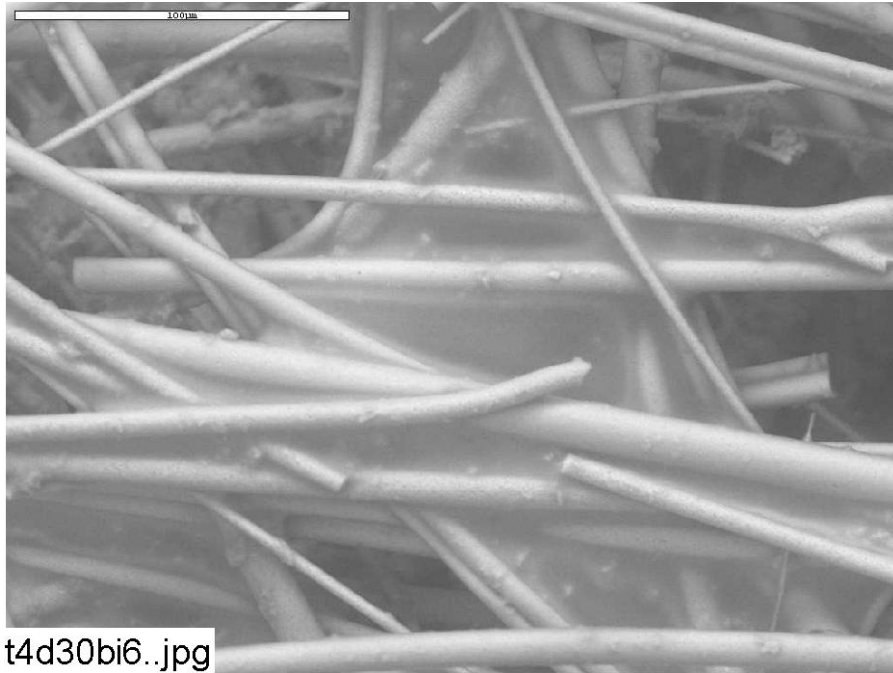
**Figure C7-2: Annotated environmental SEM image magnified 500 times for a Test #4 Day-30 exterior fiberglass sample within the birdcage. (t4d30bx4.jpg)**



**Figure C7-3: EDS counting spectrum for the particulate deposits on fiberglass shown in Figure C7-2. (T4D30bx3.jpg)**

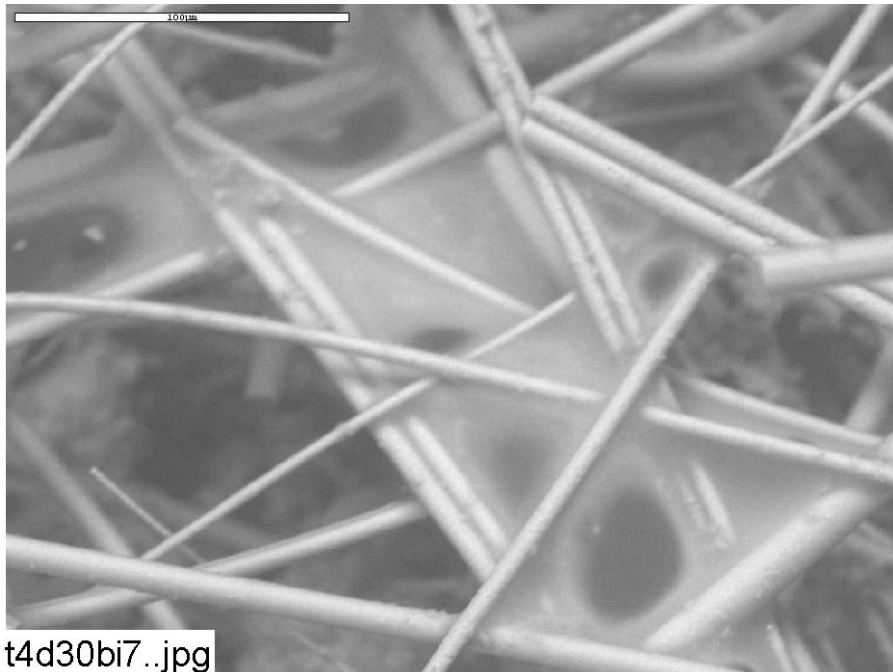


**Figure C7-4: Environmental SEM image magnified 100 times for a Test #4 Day-30 interior fiberglass sample within the birdcage. (t4d30bi5.jpg)**



t4d30bi6.jpg

**Figure C7-5: Environmental SEM image magnified 500 times for a Test #4 Day-30 interior fiberglass sample within the birdcage. (t4d30bi6.jpg)**



t4d30bi7.jpg

**Figure C7-6: Environmental SEM image magnified 500 times for a Test #4 Day-30 interior fiberglass sample within the birdcage. (t4d30bi7.jpg)**