

Appendix B2

ESEM/EDS Data for Test #4 Day-15 Fiberglass in High-Flow Zones

List of Figures

Figure B2-1: Environmental SEM image magnified 100 times for a Test #4 Day-15 exterior high-flow fiberglass sample. (t4d15hx8.jpg)	B2-4
Figure B2-2: Environmental SEM image magnified 400 times for a Test #4 Day-15 exterior high-flow fiberglass sample. (t4d15hx9.jpg)	B2-4
Figure B2-3: Annotated environmental SEM image magnified 750 times for a Test #4 Day- 15 exterior high-flow fiberglass sample. The white spot shows the area for EDS analysis. (t4d15hx7.jpg)	B2-5
Figure B2-4: EDS counting spectrum for the spot of the film between the fibers shown in Figure B2-3. (t4d15hx6.jpg)	B2-5
Figure B2-5: Environmental SEM image magnified 100 times for a Test #4 Day-15 interior high-flow fiberglass sample. (t4d15hi1.jpg)	B2-6
Figure B2-6: Environmental SEM image magnified 100 times for a Test #4 Day-15 interior high-flow fiberglass sample. (t4d15hi3.jpg)	B2-6
Figure B2-7: Environmental SEM image magnified 800 times for a Test #4 Day-15 interior high-flow fiberglass sample. (t4d15hi2.jpg)	B2-7

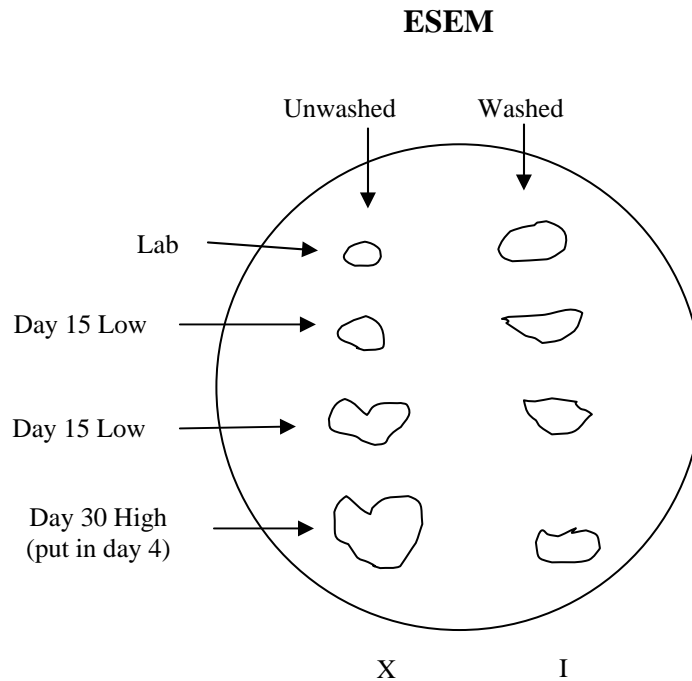
This appendix lists the ESEM/EDS results on ICET Test #4 Day-15 high-flow zone fiberglass samples. The samples were obtained on June 8, 2005 (15th date for Test #4). Both exterior and interior locations of the fiberglass samples were examined. ESEM/EDS data presented here were obtained on June 23, 2005. The hydrated fiberglass samples without any coating were examined by ESEM under a low vacuum condition (i.e., 80 Pa). EDS results provide a semi-quantitative elemental analysis of the debris attached on fiberglass.

This page is intentionally blank.

Transcribed Laboratory Log

Laboratory session from June 23, 2005.

Test #4 Day-15 fiberglass in high-flow zones



ESEM Fiberglass High-flow Exterior

Image:	t4d15hx8	100 ×	ESEM image	Figure B2-1
	t4d15hx9	400 ×		Figure B2-2
	t4d15hx7	750 ×	ESEM Annotated Image	Figure B2-3
EDS:	t4d15hx6		EDS on web material for t4d15hx7	Figure B2-4

ESEM Fiberglass High-flow Interior

Image:	t4d15hi1	100 ×	ESEM image	Figure B2-5
	t4d15hi3	100 ×		Figure B2-6
	t4d15hi2	800 ×		Figure B2-7

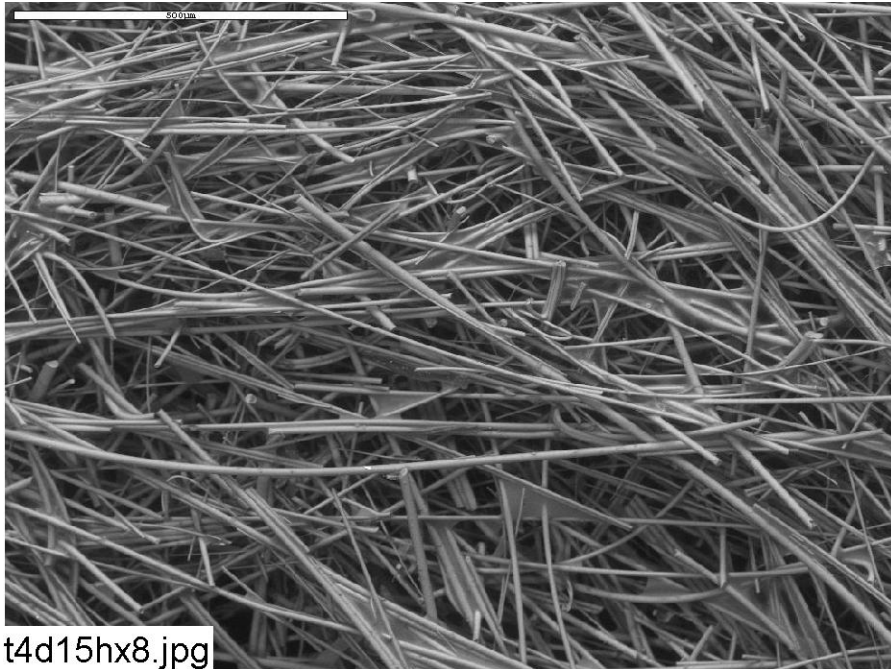


Figure B2-1: Environmental SEM image magnified 100 times for a Test #4 Day-15 exterior high-flow fiberglass sample. (t4d15hx8.jpg)

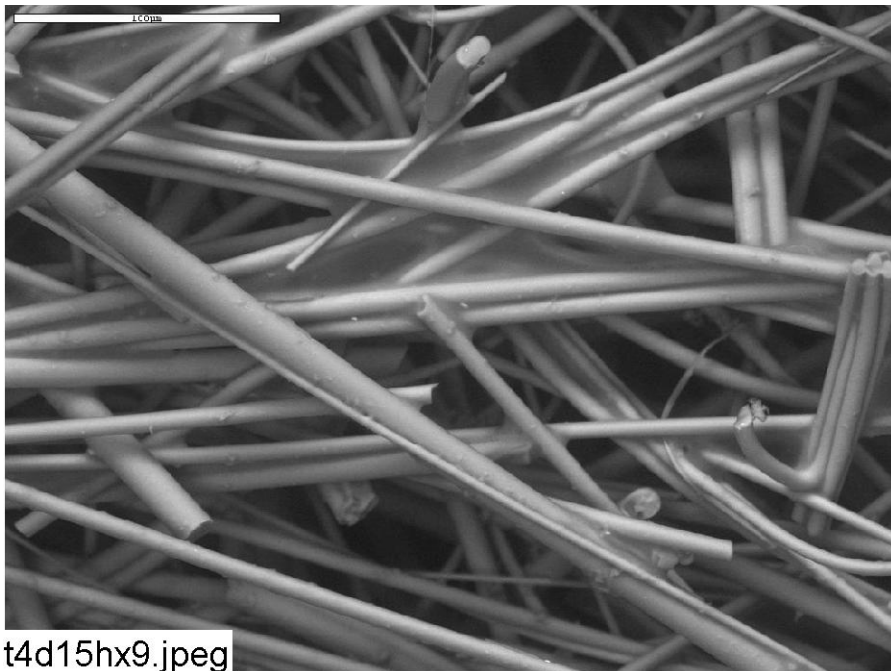


Figure B2-2: Environmental SEM image magnified 400 times for a Test #4 Day-15 exterior high-flow fiberglass sample. (t4d15hx9.jpg)

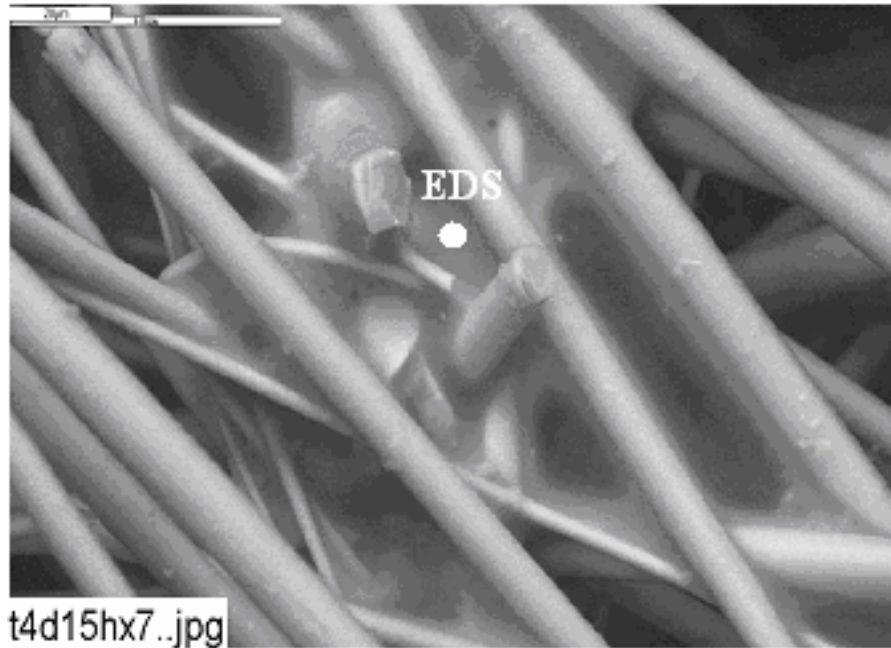


Figure B2-3: Annotated environmental SEM image magnified 750 times for a Test #4 Day-15 exterior high-flow fiberglass sample. The white spot shows the area for EDS analysis. (t4d15hx7.jpg)

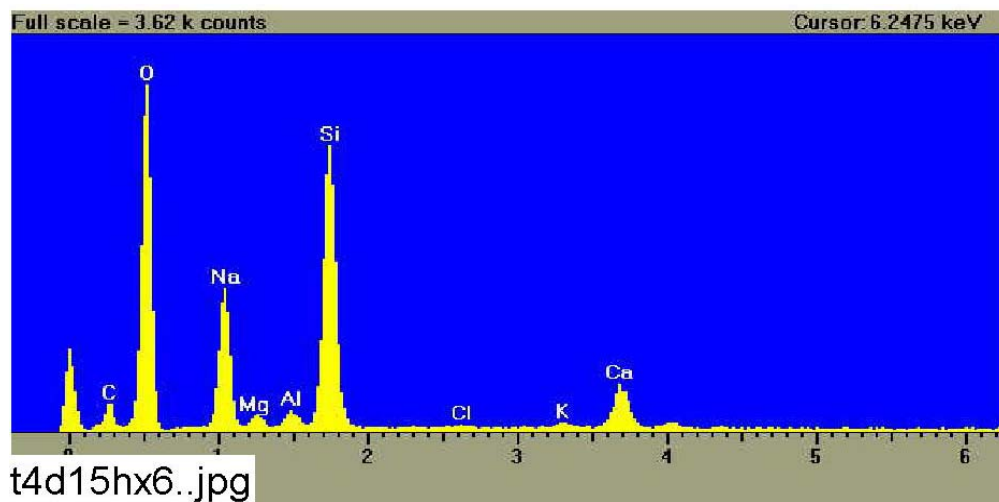


Figure B2-4: EDS counting spectrum for the spot of the film between the fibers shown in Figure B2-3. (t4d15hx6.jpg)

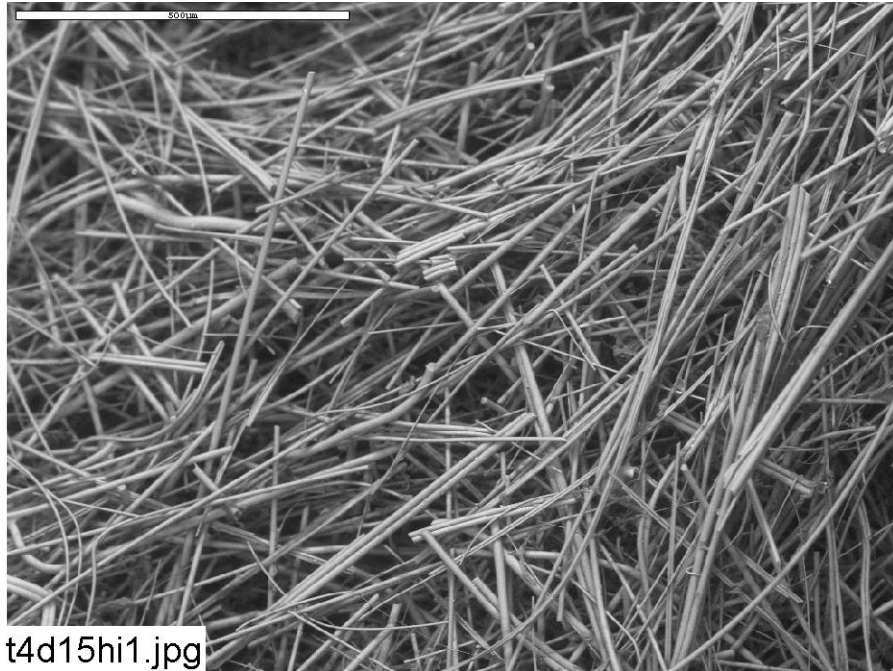


Figure B2-5: Environmental SEM image magnified 100 times for a Test #4 Day-15 interior high-flow fiberglass sample. (t4d15hi1.jpg)

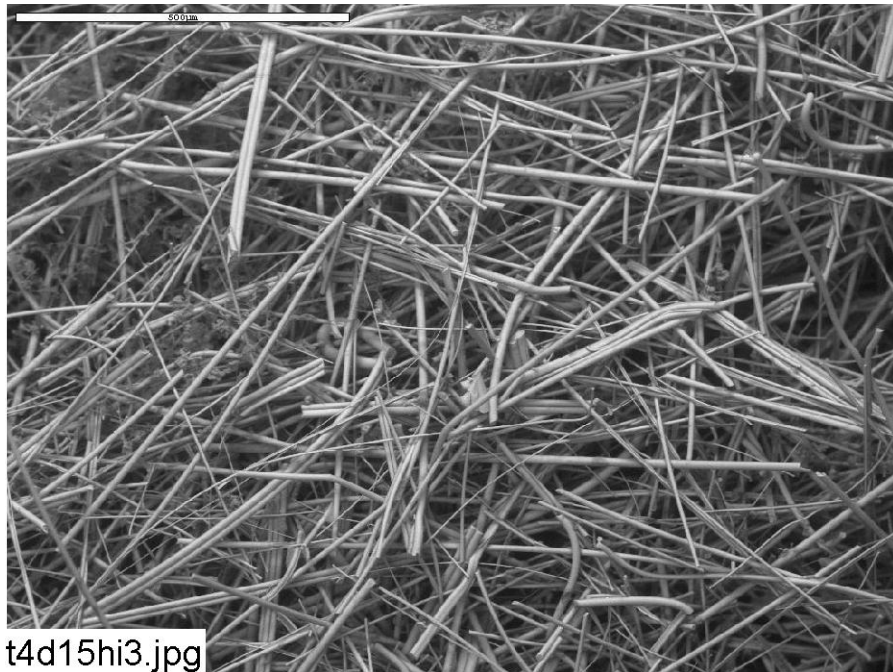
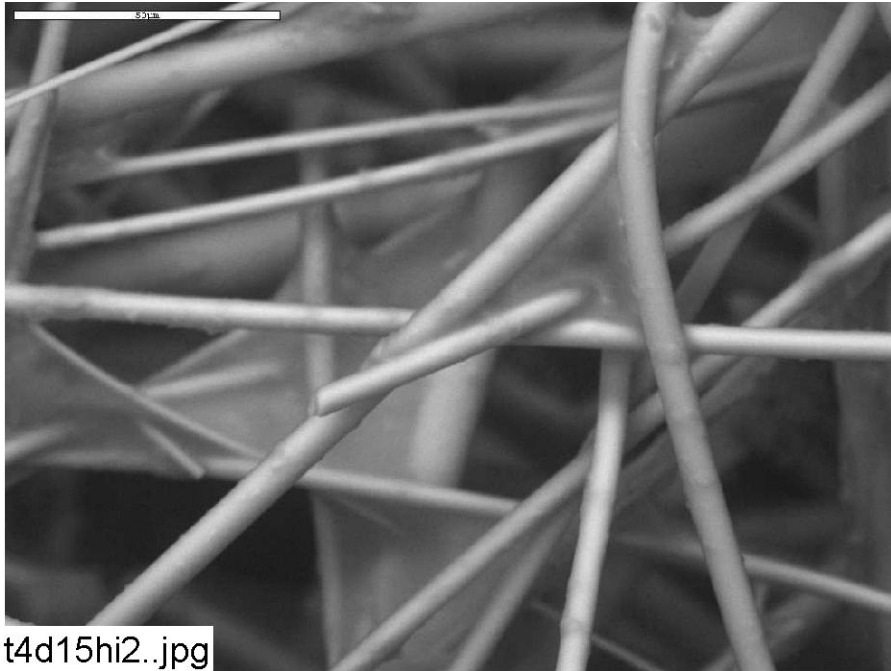


Figure B2-6: Environmental SEM image magnified 100 times for a Test #4 Day-15 interior high-flow fiberglass sample. (t4d15hi3.jpg)



t4d15hi2..jpg

Figure B2-7: Environmental SEM image magnified 800 times for a Test #4 Day-15 interior high-flow fiberglass sample. (t4d15hi2.jpg)