

# Overview UR Inspections Activities

**Denver, CO  
May 24-25, 2005**



**Jack E. Whitten, Chief**

**Nuclear Materials Licensing Branch, DNMS-RIV**

**JEW1@NRC.GOV (817) 860-8197**

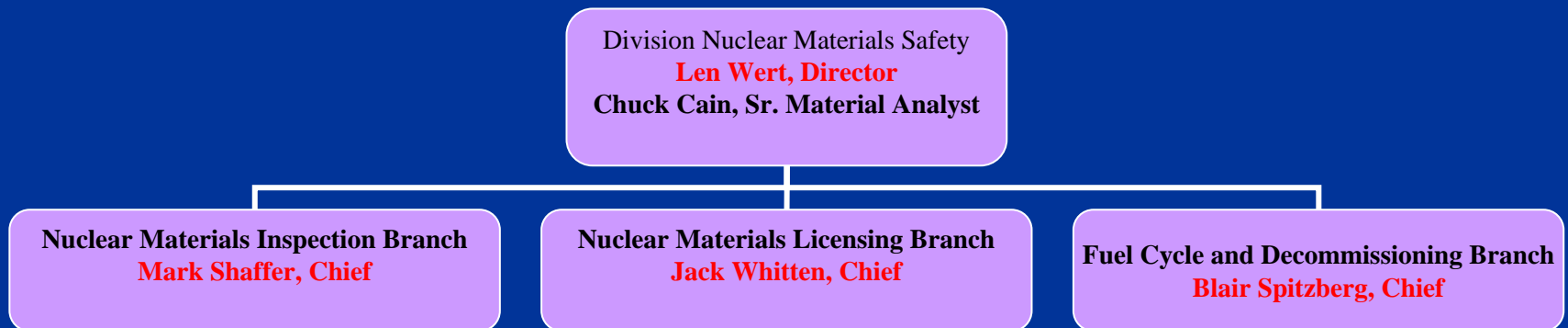
# Outline

---

- **Region IV Organization**
- **Inspection planning process**
- **Focus of inspections**
- **Types of inspections**

# DNMS ORGANIZATION

---



# Types of Routine Inspections

- **Pre-operational**- None planned in FY 2005.
- **Operational**- (ISLs, conventional facilities in standby and reclamation) 5 planned in FY 2005.
- **Close-out**- (reclamation activities complete) 1 planned in FY 2005.

# Routine Inspection Schedules

---

## Inspection frequency:

- **Once** per year at all operating facilities.
- **Every two years** at facilities in reclamation and standby, unless operating conditions or performance indicates otherwise.
- **Every three years** for inactive facilities.

# **Focus of Inspections**

**Risk Informed & Performance Based**

**Inspections Focus on Risk Significant Activities:**

- **Yellowcake Dryer Operations**
- **Health Physics Activities in Routine Operations**
- **Decommissioning & Reclamation**
  - **Focus on facility demolition & dismantlement**
  - **Tailings & Pond Construction & Maintenance**
- **11e.(2) Disposal**



EMERGENCY  
EXIT  
ONLY

CROW BUTTE  
RESOURCES  
LOT 235  
DATE 7/8/90  
GROSS 45  
TARE 45  
NET 0  
RADIOACTIVE LSA RQ

CROW BUTTE  
RESOURCES  
LOT 235  
DATE 7/8/90  
GROSS 45  
TARE 45  
NET 0  
RADIOACTIVE LSA RQ

CROW BUTTE  
RESOURCES  
LOT 235  
DATE 7/8/90  
GROSS 45  
TARE 45  
NET 0  
RADIOACTIVE LSA RQ

CROW BUTTE  
RESOURCES  
LOT 235  
DATE 7/8/90  
GROSS 45  
TARE 45  
NET 0  
RADIOACTIVE LSA RQ

CROW BUTTE  
RESOURCES  
LOT 235  
DATE 7/8/90  
GROSS 45  
TARE 45  
NET 0  
RADIOACTIVE LSA RQ

CROW BUTTE  
RESOURCES  
LOT 235  
DATE 7/8/90  
GROSS 45  
TARE 45  
NET 0  
RADIOACTIVE LSA RQ



CROW BUTTE  
RESOURCES  
LOT 235  
DATE 7/8/90  
GROSS 45  
TARE 45  
NET 0  
RADIOACTIVE LSA RQ









12/3/2003 10:17am







# Overall

---

- We noted **good cooperation** from licensees
- **Licensees** have been **prepared** for inspections
- Licensee management **supportive** of their staff in implement the radiation safety program
- **Problems** identified have been **few** and corrected quickly