


# State and Federal Regulatory Processes for Transfer of the L-Bar Site

May 24, 2005 Denver, CO



**By Kevin Myers, NMED Ground Water Quality Bureau;  
Mark Plessinger, SM Stoller for U.S. DOE; and  
John Trummel, SOHIO Western Mining Co.**

# Acknowledgements And Introduction

- Thanks to SOHIO, DOE, NMED and NRC/NMA
- Presentation Overview:
  - Site Background,
  - Federal/State Processes Prior to Transfer,
  - DOE Issues for Site Transfer
  - Questions or Comments

# L-Bar Site

- Near Moquino, Bibo & Seboyeta
- West of Albuquerque
- Laguna Mining District

AREA  
OF  
STATE SHOWN

New  
Mexico



NEW  
MEXICO

McKINELY

CHICO  
ARROYO

MARQUEZ

FORMER  
L-BAR  
RANCH

RIO PUERCO

SANDOVAL

BERNALILLO

RIO GRANDE

25

CIBOLA

SEBOYETA

BIBO

PAGUATE

L-Bar Site

MOQUINO

40

ALBUQUERQUE

Albuquerque

Grants  
GRANTS

SAN FIDEL

RIO SAN JOSE

124

LAGUNA

23

Laguna

ACOMA  
PUEBLO

COLORADO

ARROYO

CIBOLA

CATRON

SOCORRO

VALENCIA

6

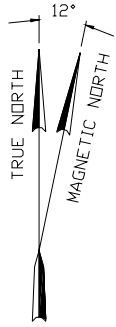
RIO

PUERCO

RIO

GRANDE

25



EXPLANATION

- 25 INTERSTATE
- 93 STATE HIGHWAY
- 31 COUNTY ROAD
- UNPAVED ROAD

NOT TO SCALE

U.S. DEPARTMENT OF ENERGY  
GRAND JUNCTION OFFICE  
GRAND JUNCTION, COLORADO

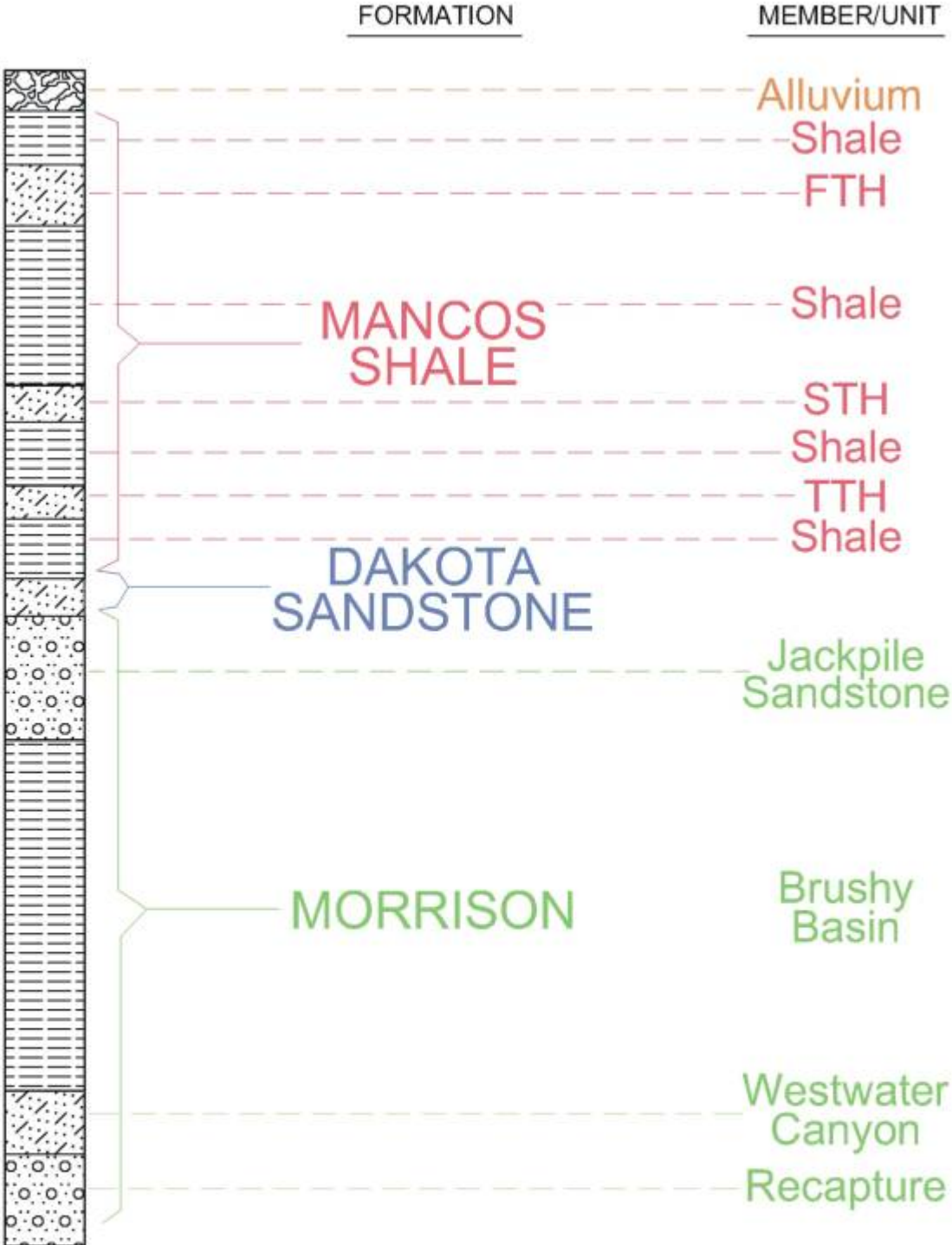
Work Performed by  
**S. M. Stoller Corporation**  
Under DOE Contract  
No. DE-AC13-02GJ79491

GENERAL LOCATION MAP FOR  
L-BAR, NEW MEXICO,  
DISPOSAL SITE

DATE PREPARED:  
OCTOBER 7, 2002

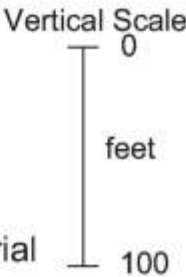
FILENAME:  
S0039400

# L-BAR SITE STRATIGRAPHY



EXPLANATION

- Alluvium/Colluvium
- Shale/Mudstone
- Sandstone
- Sandstone/Carbonaceous material



# Operational History

## L-Bar Facility

- Mill and Tailings 1977 to 1981
- Tailing pond 140 acres;  
1 to 45 feet in height; 2 M tons
- State Permit DP-150 from  
1982 thru October 2004
- NM Water Quality Act 1978
- NRC License SUA #1472  
thru October 2004
- UMTRCA 1978



1978 Oblique Aerial Photo, EPA  
Looking Southwest



# 1978 L-Bar Site Mill and Tailings



1978 Aerial Photo, EPA



# Partial Reclamation History

- Initial CAP 1986, Pump & Evap
- Cover placed 1990, radon barrier
- Settling of Tailings and Cover
- Cease Pump & Evap 1999
- Added Cover 2000,
  - minimum 4.1 feet thick
- Revised rip rap, sediment basin design
- Final CAP complete by 2000

# L-Bar Site 1997



Areal Photograph October 5, 1997,  
Courtesy USGS TerraServer

# Jurisdictional Issue

- NRC/NMED regulation of non radiological contaminants and off-site contamination.
- Sohio/DOE/NMED met in Santa Fe with NRC included telephonically
- Rights reserved, State process continues with DOE incorporating results into LTSP for NRC review

# NRC Requirements

- License Amendments Fulfilled
- ACL Petition 1998
- ACL Approval 1999
- Cover and Storm Water Design Revised
- Reclamation complete 2000
- Radon Barrier Survey and Final Inspection 2001

# NMED Requirements I

- Abatement Process
- Public Meetings 2001 and 2003
- SOHIO Petitions for AAS 2002
- NMED Supports Petition

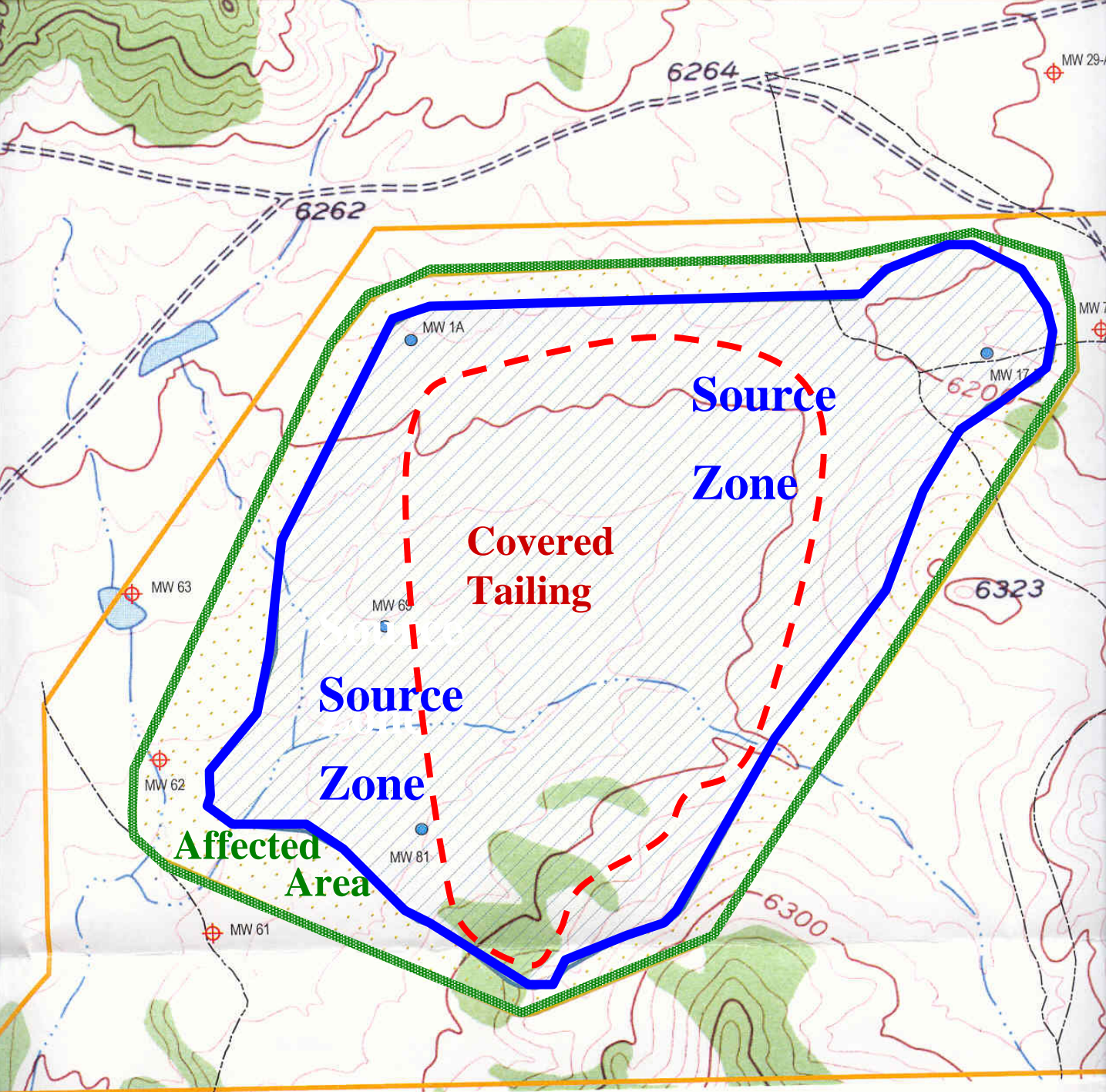


# NMED Requirements II

- WQCC
- WQCC Public Hearing and Approval for AAS 2003
- Completion Report Jan 2004
- Compliance with WQCC Regulations and Permit DP-150

Analyte	New Mexico Standard	ACL	AAS Source Zone	AAS Affected Area
U	0.030 (2004/07)	13	13	NA
Se	0.05	2.0	2.0	NA
Cl	250	NA	1,127	NA
SO <sub>4</sub>	4,000 background	NA	13,110	5,185
NO <sub>3</sub>	10.0	NA	1,180	NA
TDS	5,880 background	NA	20,165	7,846

ALL VALUES IN mg/L



n: State Plane NAD83, West  
 rces: New Mexico Resource  
 ic Information System; Pacific  
 Technologies, Ltd.

800  
 Feet

-  Monitoring Well
-  Point of Compliance Well
-  Primary Source Zone Limits
-  Approximate Extents of Affected Area
-  Property Boundary
-  Road

# DOE Issues

## Site Transfer

- Work with NRC, SOHIO and NMED
- DOE Requirements
- WQCC Hearing – Testimony
- Draft and Final LTSP (SMP)

# DOE Requirements I

- Site reclamation approved by NRC
- Clear title to site property
- Unimpeded access to site and off site features (e.g., monitor wells)



# DOE Requirements II

- Site must be free of unnecessary infrastructure (e.g., buildings and equipment)
- Site cannot have outstanding federal, state, or local permits
  - DOE will not accept responsibility for closing out existing permits
  - Lesson learned the hard way

# WQCC Hearing Outcome

- AAS Petition Approved
  - Adequate Source Control, Abatement, and Monitoring Plan
  - Institutional Controls accepted
- Draft LTSP Additions
  - Map of source zone/affected area
  - AAS numerical values
  - Sample Moquino supply wells
  - Erosion monitoring program

# LTSP Finalized

- LTSP Revised and Reviewed
- Final Draft Submitted to NRC
- NRC Reviews and Approves

# L-Bar Site Transferred October 2004

- New Mexico Approves Termination of Permit DP-150
- NRC License SUA #1472 terminates
- DOE General License In Place
- LTSP active
- Financial Assurance Transfer
- DOE begins inspections



L-Bar Site, July 2004





L-Bar Site, July 2004

# Conclusions and Questions

- Cooperation between Federal and State Agencies facilitated the L-Bar site transfer for SOHIO.
- QUESTIONS or COMMENTS?