

Appendix C2

ESEM Data for Test #3 Day-30 Fiberglass in Low-Flow Zones

List of Figures

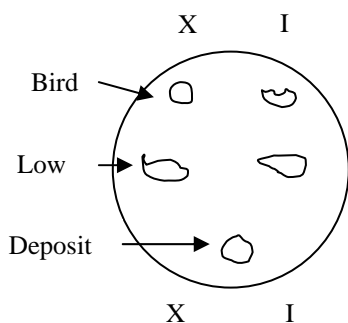
Figure C2-1: ESEM image magnified 70 times for a Test #3 Day-30 exterior low-flow fiberglass sample. (t3lfex09).....	C2-4
Figure C2-2: ESEM image magnified 1000 times for a Test #3 Day-30 exterior low-flow fiberglass sample. (t3lfex10).....	C2-4
Figure C2-3: ESEM image magnified 1000 times for a Test #3 Day-30 exterior low-flow fiberglass sample. (t3lfex11).....	C2-5
Figure C2-4: ESEM image magnified 70 times for a Test #3 Day-30 interior low-flow fiberglass sample. (t3lfin12)	C2-5
Figure C2-5: ESEM image magnified 1000 times for a Test #3 Day-30 interior low-flow fiberglass sample. (t3lfin13)	C2-6
Figure C2-6: ESEM image magnified 1000 times for a Test #3 Day-30 interior low-flow fiberglass sample. (t3lfin14)	C2-6
Figure C2-7: ESEM image magnified 1000 times for a Test #3 Day-30 interior low-flow fiberglass sample. (t3lfin15)	C2-7

This page is intentionally blank.

This appendix presents the ESEM results on fiberglass samples submerged in the low-flow zone in the tank. The fiberglass samples were extracted on the date Test #3 was shut down (May 5, 2005). Both exterior and interior locations of the fiberglass samples were examined. ESEM was employed to analyze the uncoated, wet fiberglass samples. Additionally, the ESEM was performed under a low vacuum condition (i.e., 80 Pa) to minimize the modification of the fiberglass that could occur through the drying process. Available logbook entries for this laboratory session are included in this appendix as transcribed notes.

Transcribed Laboratory Log

Laboratory session from May 6, 2005.
Test #3 Day-30 Birdcage Fiberglass.



Low-Flow Exterior

Image: t3lfex09	70 ×	ESEM image of fiberglass sample	Figure C2-1
t3lfex10	1000 ×	ESEM at higher magnification	Figure C2-2
t3lfex11	1000 ×	ESEM image	Figure C2-3

Low-Flow Interior

Image: t3lfin12	70 ×	ESEM image of fiberglass sample	Figure C2-4
t3lfin13	1000 ×	ESEM image at higher mag.	Figure C2-5
t3lfin14	1000 ×	ESEM image	Figure C2-6
t3lfin15	1000 ×	ESEM image	Figure C2-7

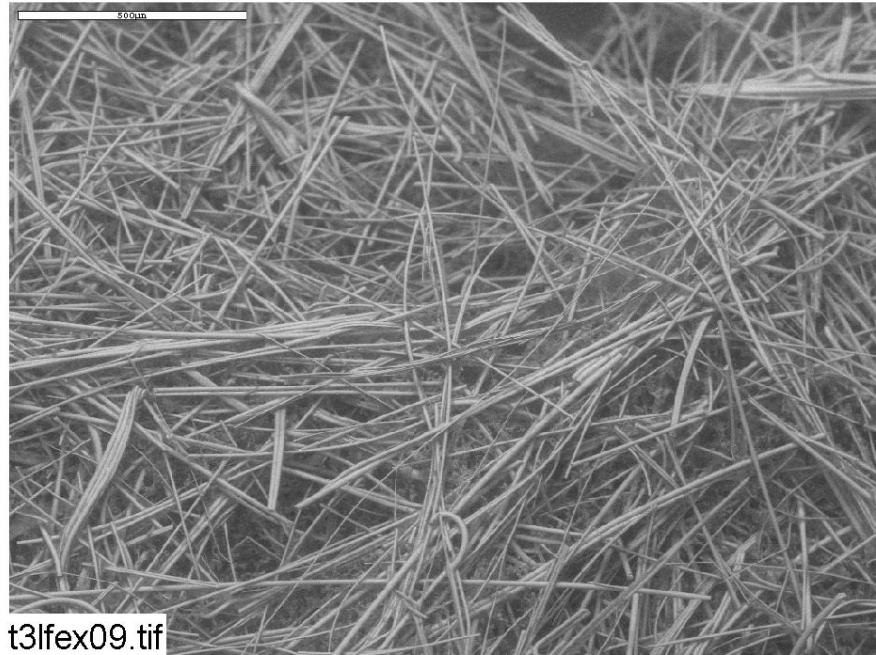


Figure C2-1: ESEM image magnified 70 times for a Test #3 Day-30 exterior low-flow fiberglass sample. (t3lfex09)

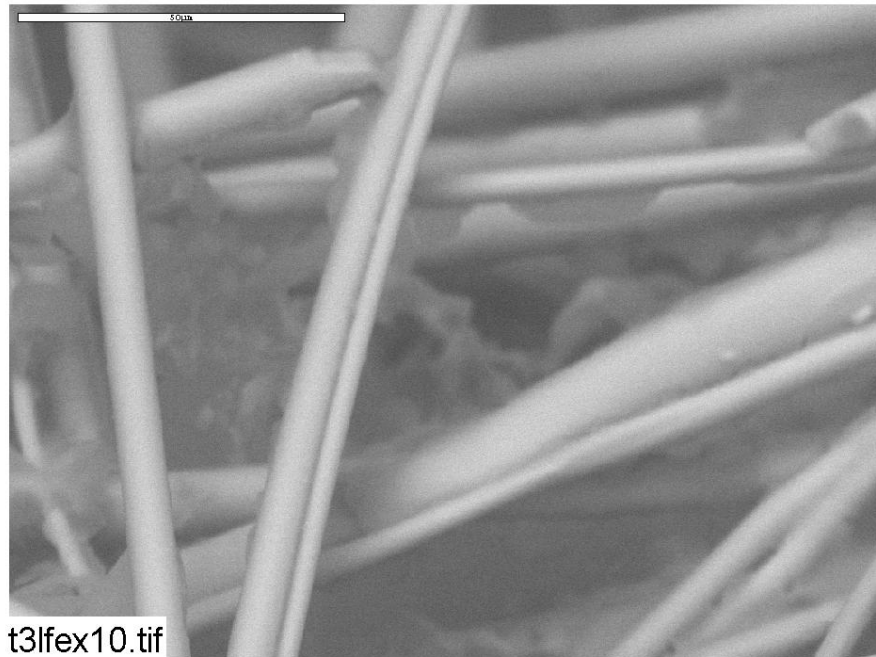


Figure C2-2: ESEM image magnified 1000 times for a Test #3 Day-30 exterior low-flow fiberglass sample. (t3lfex10)

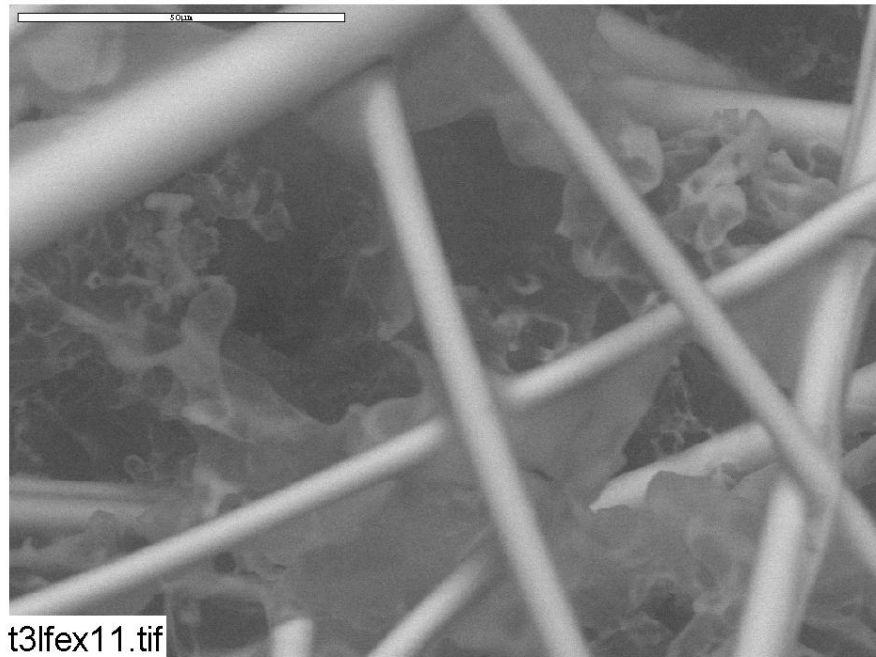


Figure C2-3: ESEM image magnified 1000 times for a Test #3 Day-30 exterior low-flow fiberglass sample. (t3lfex11)

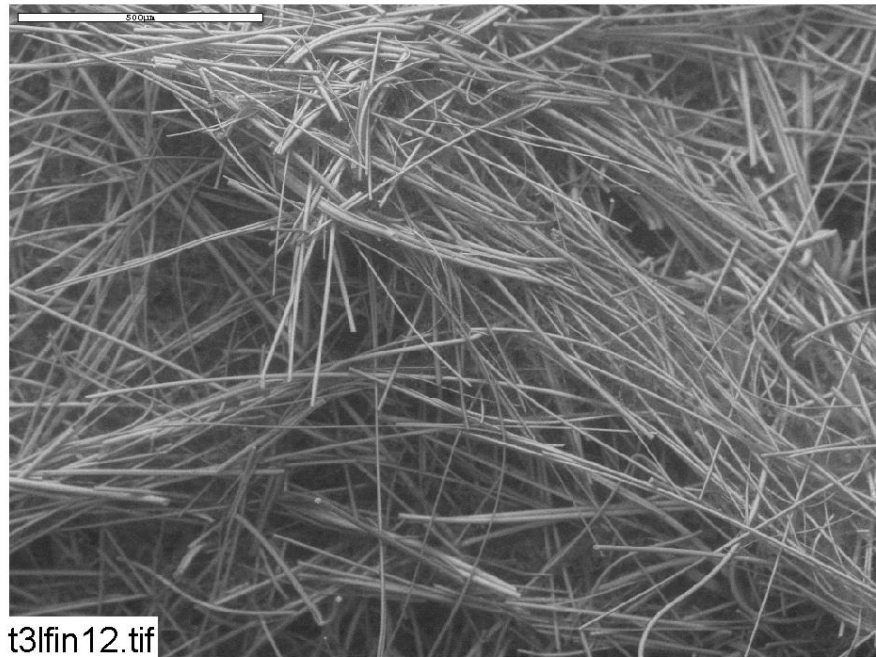


Figure C2-4: ESEM image magnified 70 times for a Test #3 Day-30 interior low-flow fiberglass sample. (t3lfin12)

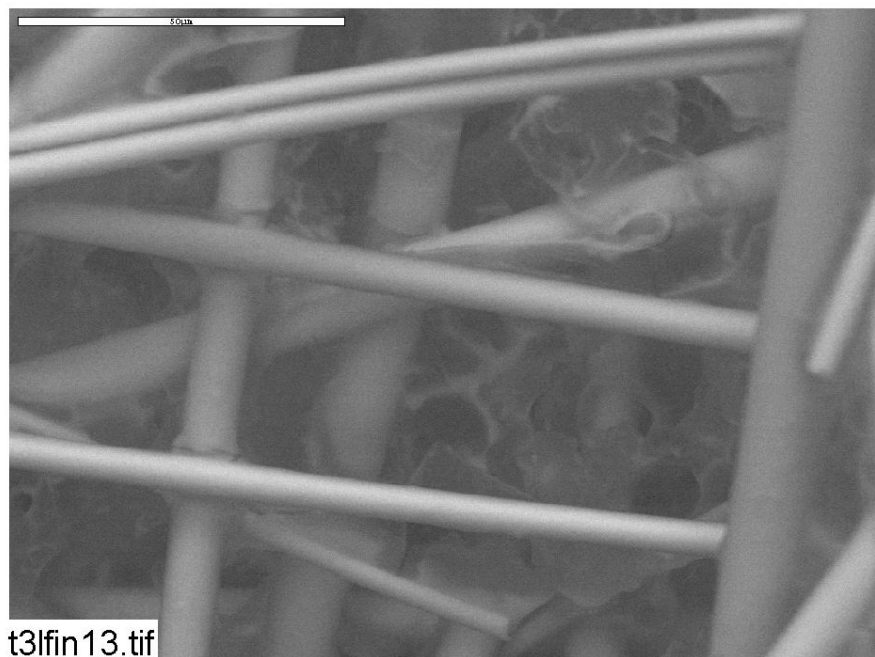


Figure C2-5: ESEM image magnified 1000 times for a Test #3 Day-30 interior low-flow fiberglass sample. (t3lfin13)

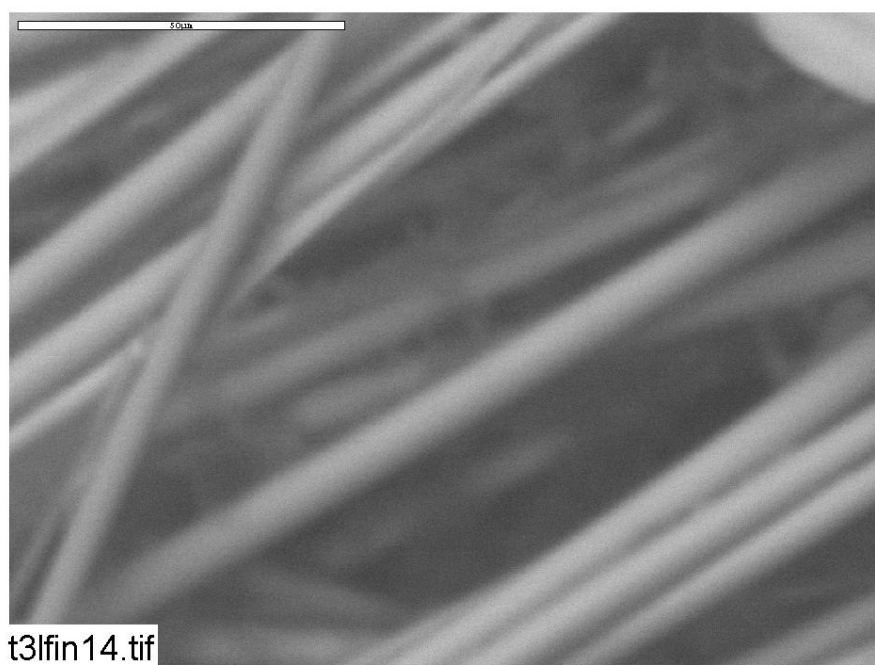


Figure C2-6: ESEM image magnified 1000 times for a Test #3 Day-30 interior low-flow fiberglass sample. (t3lfin14)

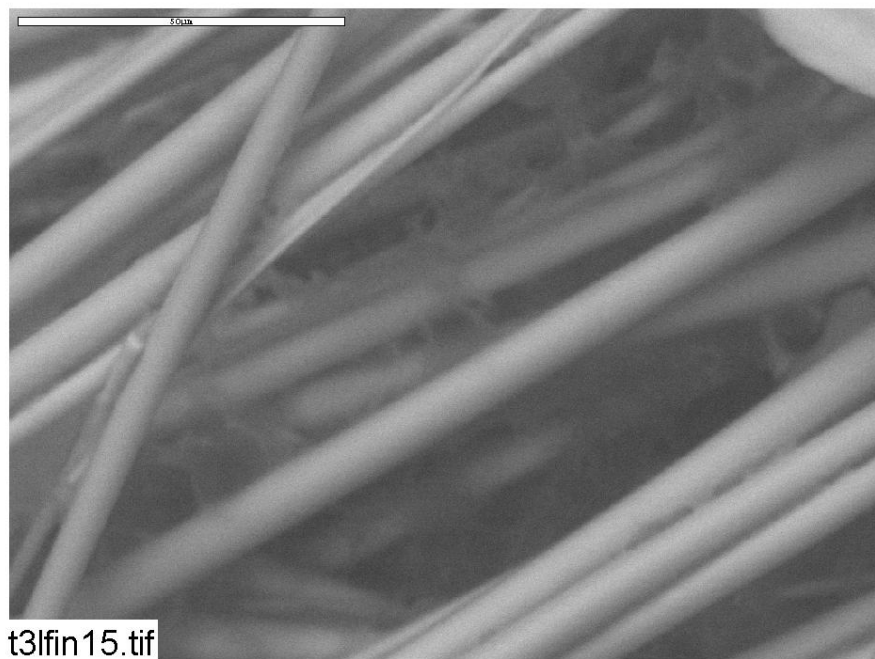


Figure C2-7: ESEM image magnified 1000 times for a Test #3 Day-30 interior low-flow fiberglass sample. (t3lfin15)