

Appendix B1

ESEM/EDS and SEM/EDS Data for Test #3 Day-15 Fiberglass in High-Flow Zones

List of Figures

Figure B1-1: Environmental SEM image magnified 100 times for a Test #3 Day-15 high-flow interior fiberglass sample. (T3D15HI1)	B1-5
Figure B1-2: Environmental SEM image magnified 1000 times for a Test #3 Day-15 high-flow interior fiberglass sample. (T3D15HI2)	B1-5
Figure B1-3: Environmental SEM image magnified 2000 times for a Test #3 Day-15 high-flow interior fiberglass sample. (T3D15HI3)	B1-6
Figure B1-4: EDS counting spectrum for the flocculence deposits between the fibers on ESEM image shown in Figure B1-3. (T3D15HIA)	B1-6
Figure B1-5: Environmental SEM image magnified 110 times for a Test #3 Day-15 high-flow exterior fiberglass sample. (T3D15HX4)	B1-7
Figure B1-6: Environmental SEM image magnified 1000 times for a Test #3 Day-15 high-flow exterior fiberglass sample. (T3D15HX5)	B1-7
Figure B1-7: EDS counting spectrum for the deposits between the fibers on ESEM image shown in Figure B1-6. (T3D15HXB)	B1-8
Figure B1-8: SEM image magnified 100 times for a Test #3 Day-15 high-flow interior fiberglass sample. (T3D15HIFlowInt002).....	B1-8
Figure B1-9: SEM image magnified 1000 times for a Test #3 Day-15 high-flow interior fiberglass sample. (T3D15HIFlowInt003).....	B1-9
Figure B1-10: SEM image magnified 1000 times for a Test #3 Day-15 high-flow interior fiberglass sample. (T3D15HIFlowInt004).....	B1-9
Figure B1-11: EDS counting spectrum for the flocculence deposits between the fibers on SEM image shown in Figure B1-10. (T3D15HiFlowIntEDS1).....	B1-10
Figure B1-12: SEM image magnified 100 times for a Test #3 Day-15 high-flow exterior fiberglass sample. (T3D15HIFlowExt005).....	B1-10
Figure B1-13: SEM image magnified 1000 times for a Test #3 Day-15 high-flow exterior fiberglass sample. (T3D15HIFlowExt006).....	B1-11

Figure B1-14: SEM image magnified 500 times for a Test #3 Day-15 high-flow exterior fiberglass sample. (T3D15HiFlowExt007).....	B1-11
Figure B1-15: EDS counting spectrum for the flocculence deposits between the fibers on SEM image shown in Figure B1-14. (T3D15HiFlowExtEDS2)	B1-12

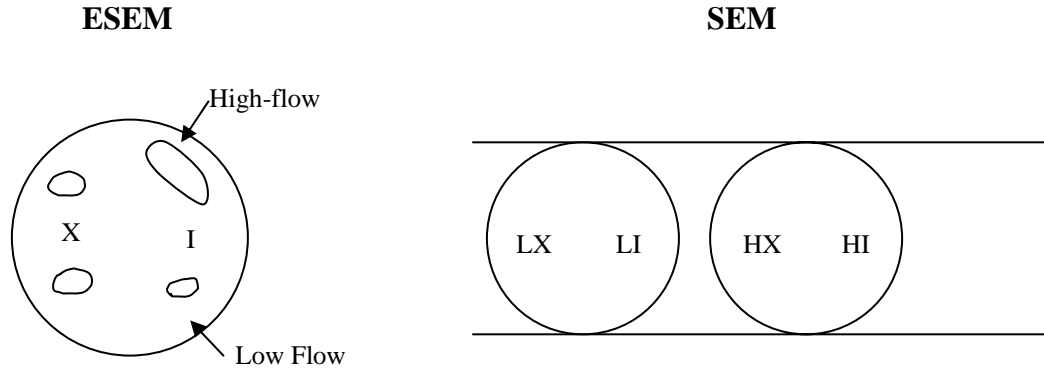
This appendix shows the ESEM/probe SEM/EDS results for ICET Test #3 Day-15 high-flow zone fiberglass samples. Both exterior and interior locations of the fiberglass samples were examined. These fiberglass samples were obtained on April 20, 2005 (15th day of Test #3). For probe SEM examination, the fiberglass samples were air dried at room temperature and then were coated with Au/Pd. Available logbook entries for this laboratory session are included in this appendix as transcribed notes.

This page is intentionally blank.

Transcribed Laboratory Log

Laboratory session from April 22, 2005.

Test #3 Day-15 fiberglass in high-flow zones



Instrument Conditions: ESEM, Pressure=80 Pa
SEM, Electron beam of 1×10^{-9} (A)

ESEM Fiberglass High-flow Interior

Image:	T3D15HI1	100 ×	Figure B1-1
	T3D15HI2	1000 ×	Figure B1-2
	T3D15HI3	2000 ×	Figure B1-3
EDS:	T3D15HIA	EDS on particles shown in T3D15HI3	Figure B1-4

ESEM Fiberglass High-flow Exterior

Image:	T3D15HX4	110 ×	Figure B1-5
	T3D15HX5	1000 ×	Figure B1-6
EDS:	T3D15HXB	EDS on particles shown in T3D15HX5	Figure B1-7

SEM Fiberglass High-flow Interior

Image:	T3D15HIFlowInt002	100 ×	Figure B1-8
	T3D15HIFlowInt003	1000 ×	Figure B1-9
	T3D15HIFlowInt004	1000 ×	Figure B1-10
EDS:	T3D15HIFlowIntEDS1	EDS on particles shown in Int004	Figure B1-11

SEM Fiberglass High-flow Exterior

Image:	T3D15HIFlowExt005	100 ×	Figure B1-12
	T3D15HIFlowExt006	1000 ×	Figure B1-13
	T3D15HIFlowExt007	500 ×	Figure B1-14
EDS:	T3D15HIFlowExtEDS2	EDS on particles shown in Ext007	Figure B1-15

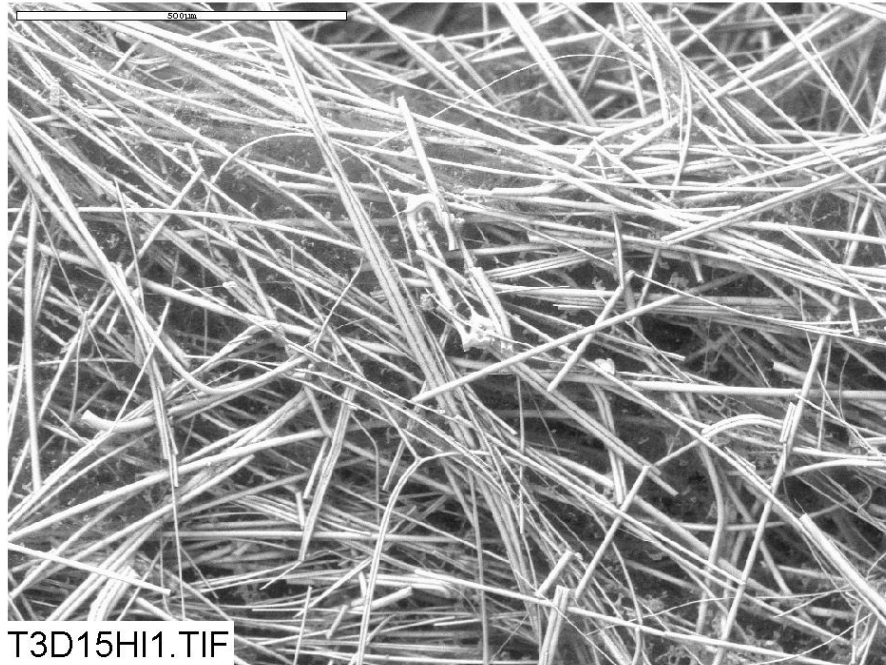


Figure B1-1: Environmental SEM image magnified 100 times for a Test #3 Day-15 high-flow interior fiberglass sample. (T3D15HI1)

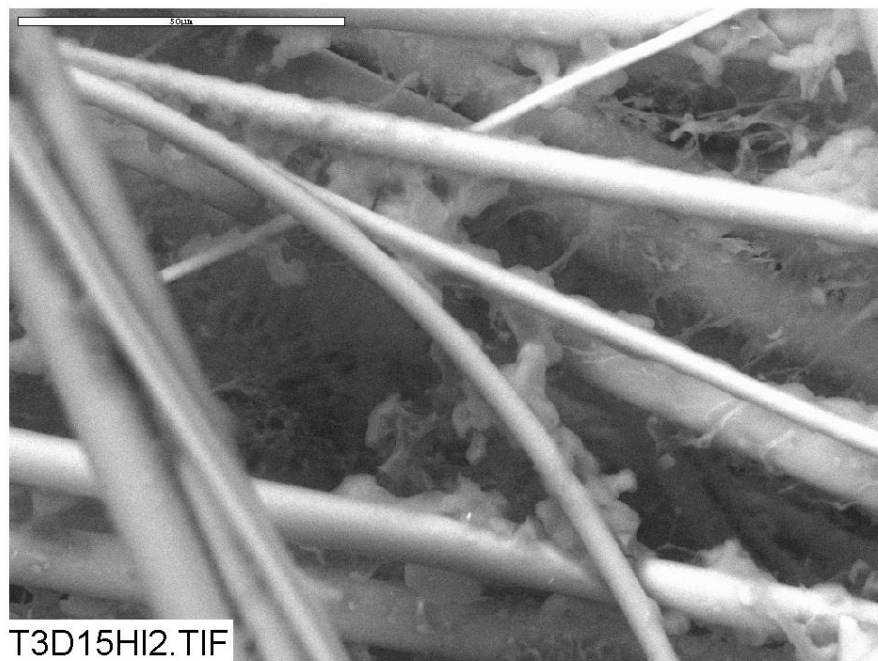


Figure B1-2: Environmental SEM image magnified 1000 times for a Test #3 Day-15 high-flow interior fiberglass sample. (T3D15HI2)

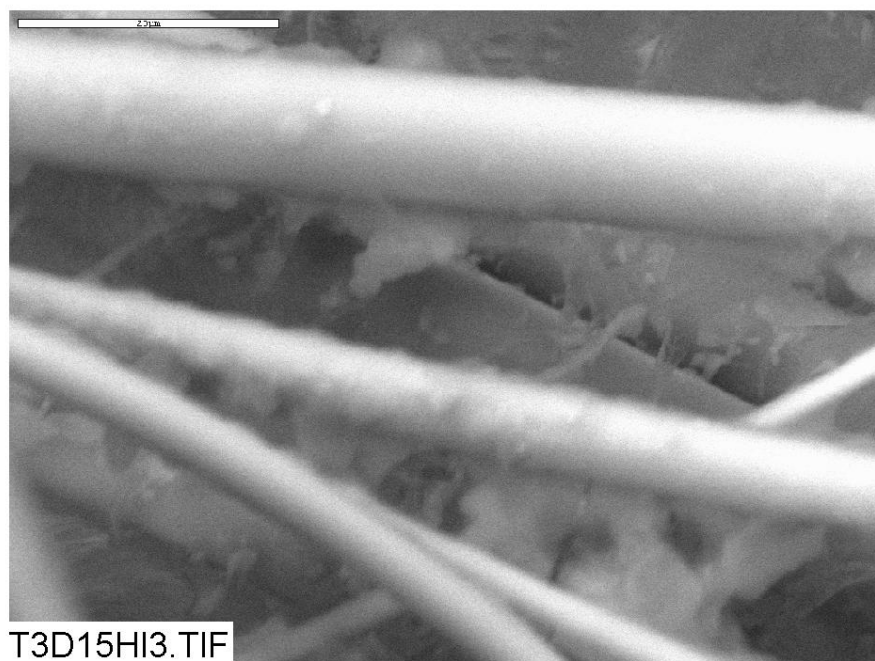


Figure B1-3: Environmental SEM image magnified 2000 times for a Test #3 Day-15 high-flow interior fiberglass sample. (T3D15HI3)

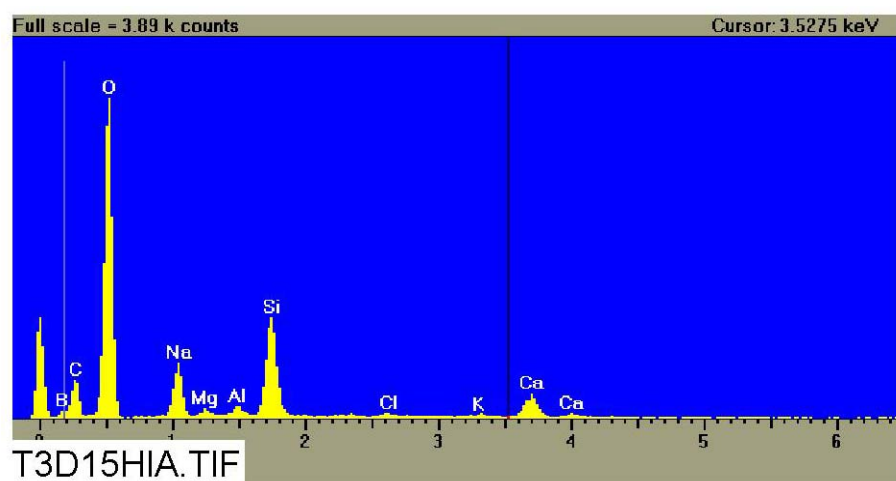


Figure B1-4: EDS counting spectrum for the flocculence deposits between the fibers on ESEM image shown in Figure B1-3. (T3D15HIA)

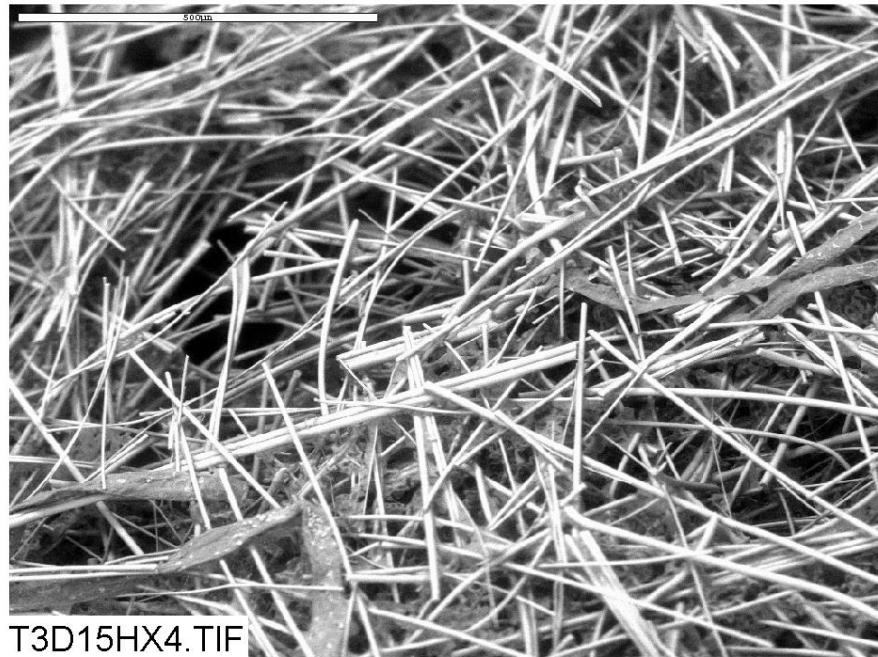


Figure B1-5: Environmental SEM image magnified 110 times for a Test #3 Day-15 high-flow exterior fiberglass sample. (T3D15HX4)

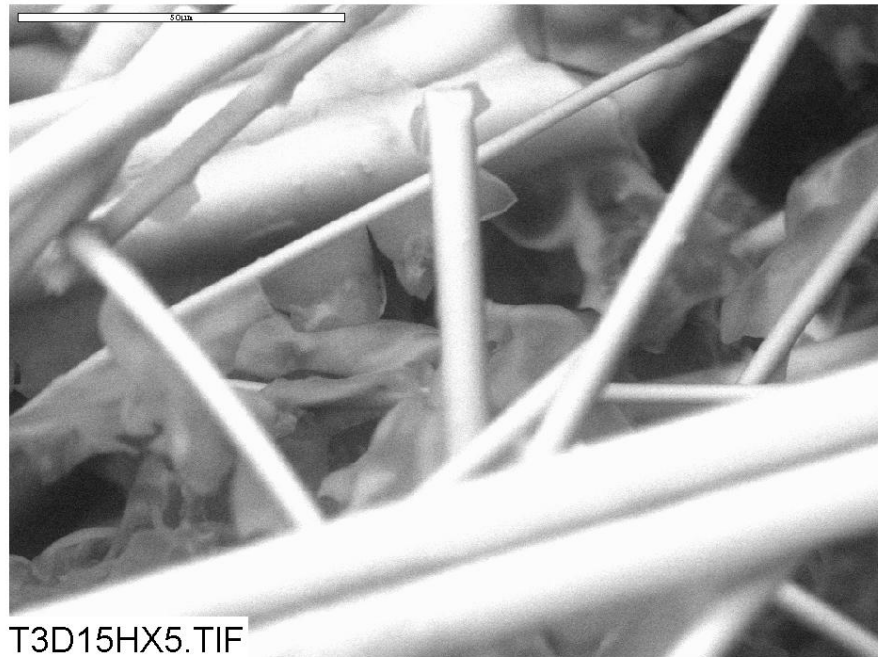


Figure B1-6: Environmental SEM image magnified 1000 times for a Test #3 Day-15 high-flow exterior fiberglass sample. (T3D15HX5)

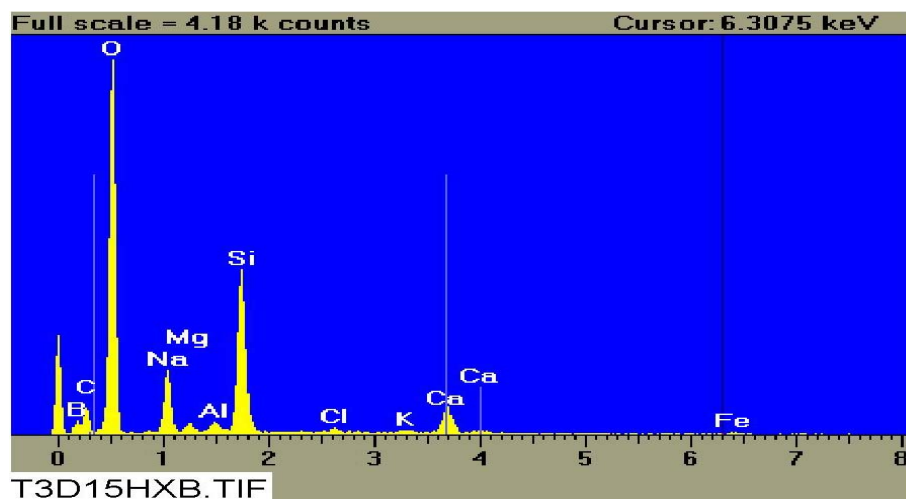


Figure B1-7: EDS counting spectrum for the deposits between the fibers on ESEM image shown in Figure B1-6. (T3D15HXB)

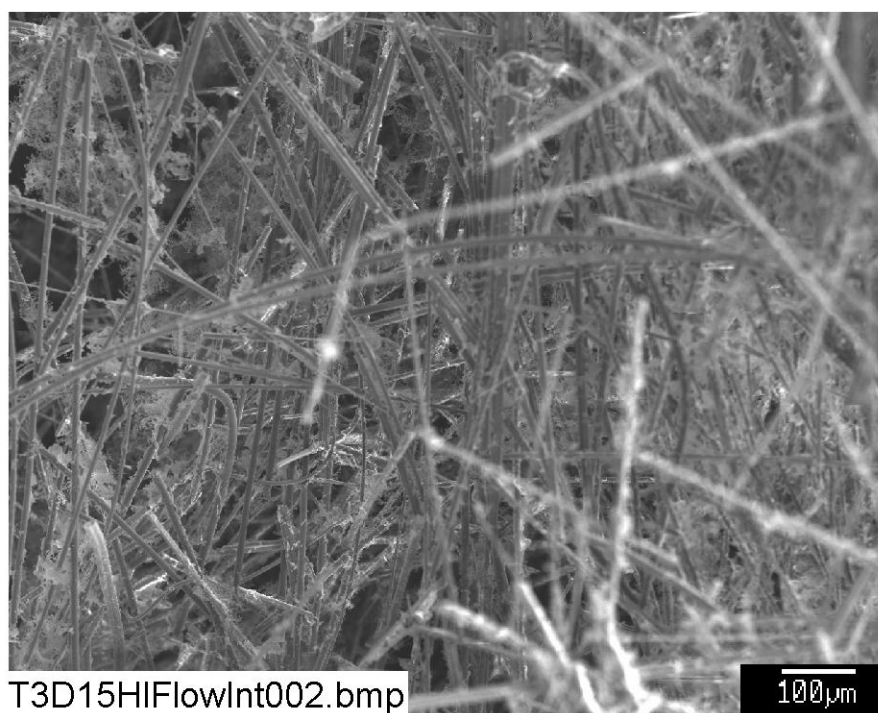


Figure B1-8: SEM image magnified 100 times for a Test #3 Day-15 high-flow interior fiberglass sample. (T3D15HIFlowInt002)

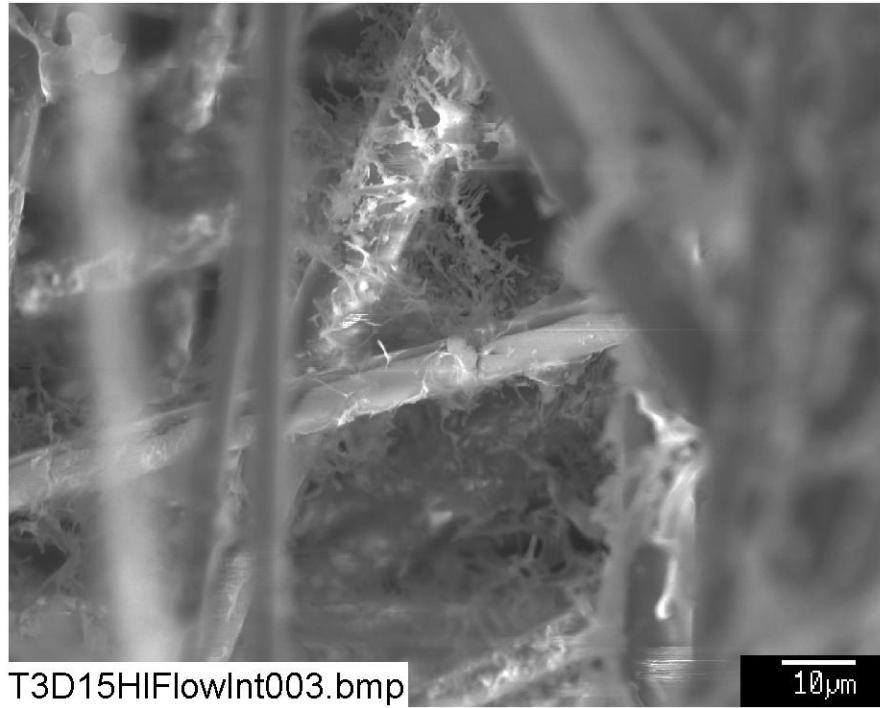


Figure B1-9: SEM image magnified 1000 times for a Test #3 Day-15 high-flow interior fiberglass sample. (T3D15HIFlowInt003)

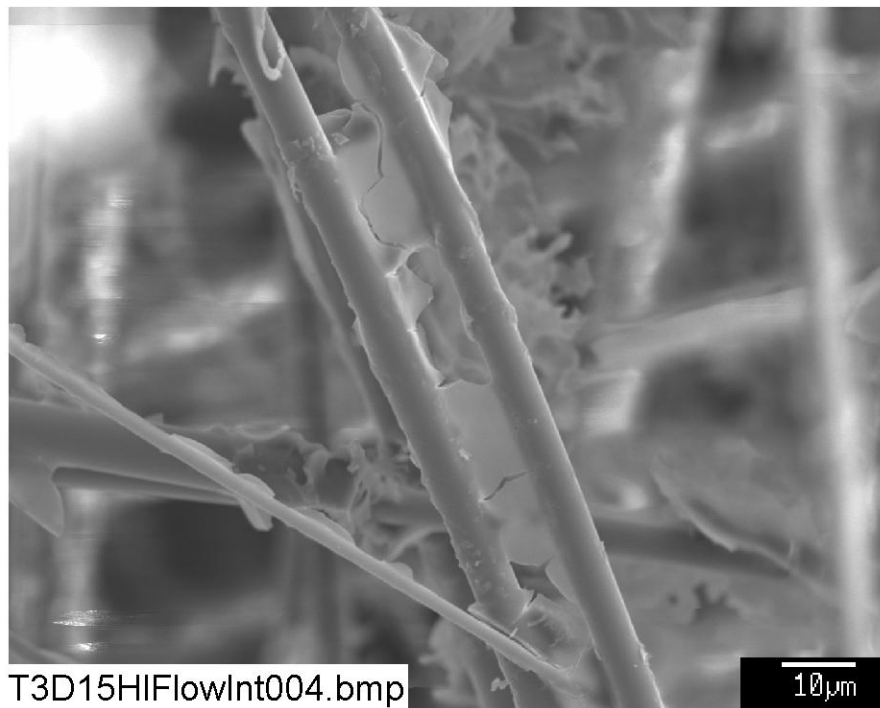


Figure B1-10: SEM image magnified 1000 times for a Test #3 Day-15 high-flow interior fiberglass sample. (T3D15HIFlowInt004)

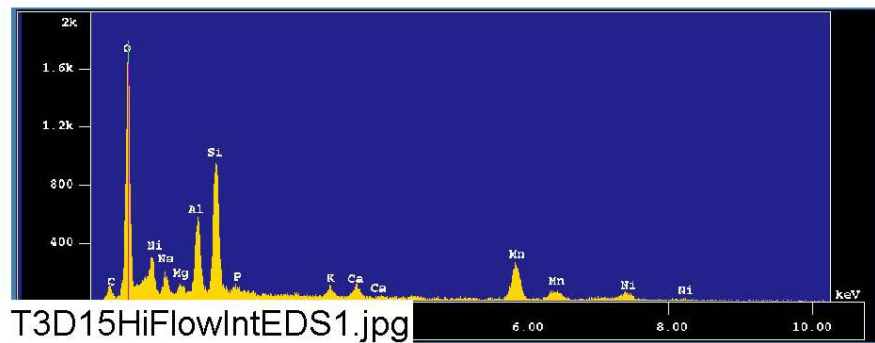


Figure B1-11: EDS counting spectrum for the flocculence deposits between the fibers on SEM image shown in Figure B1-10. (T3D15HiFlowIntEDS1)

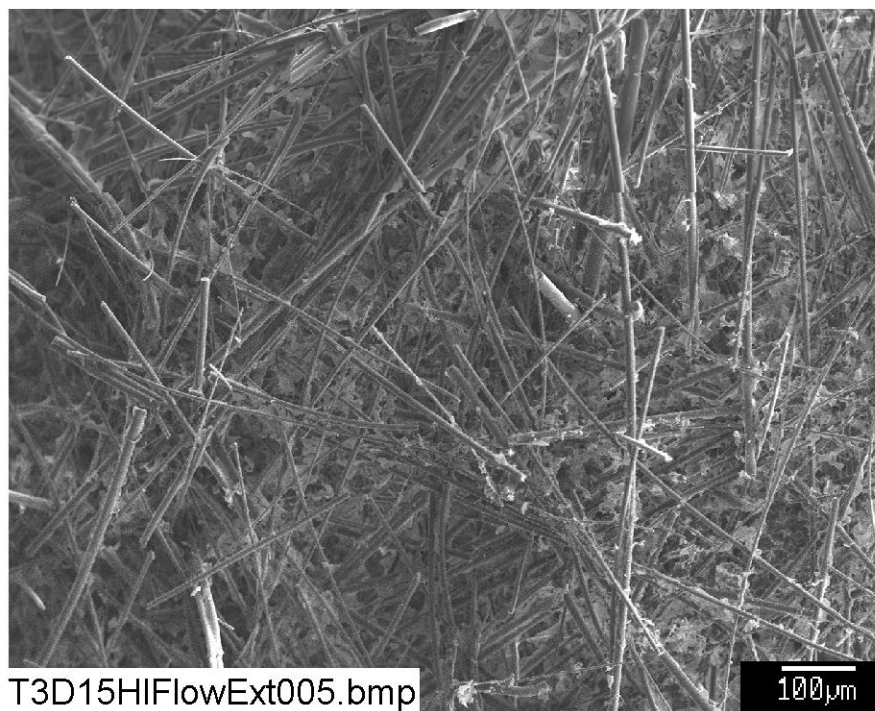


Figure B1-12: SEM image magnified 100 times for a Test #3 Day-15 high-flow exterior fiberglass sample. (T3D15HiFlowExt005)

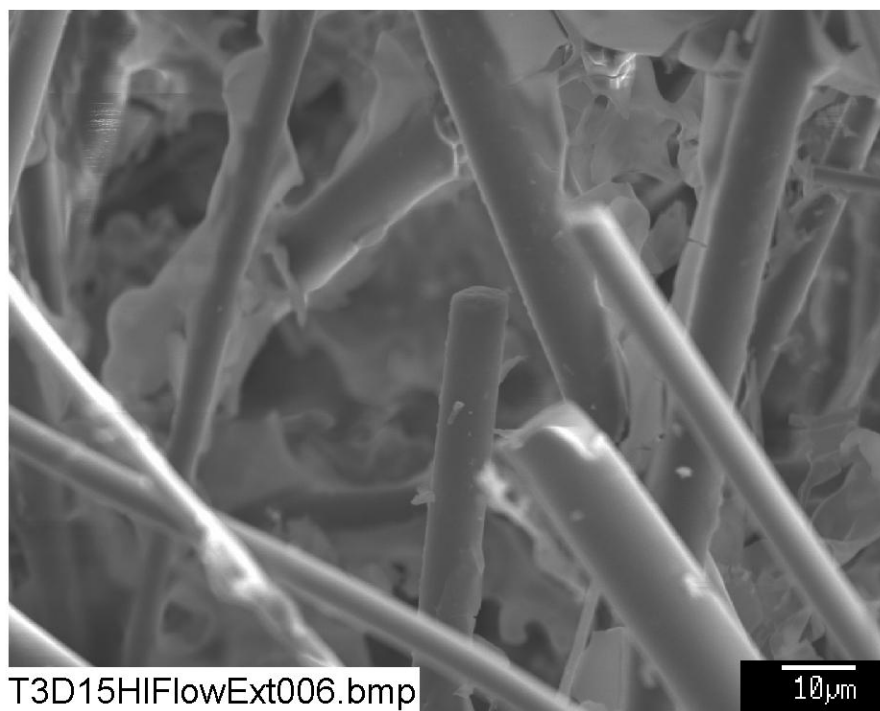


Figure B1-13: SEM image magnified 1000 times for a Test #3 Day-15 high-flow exterior fiberglass sample. (T3D15HIFlowExt006)

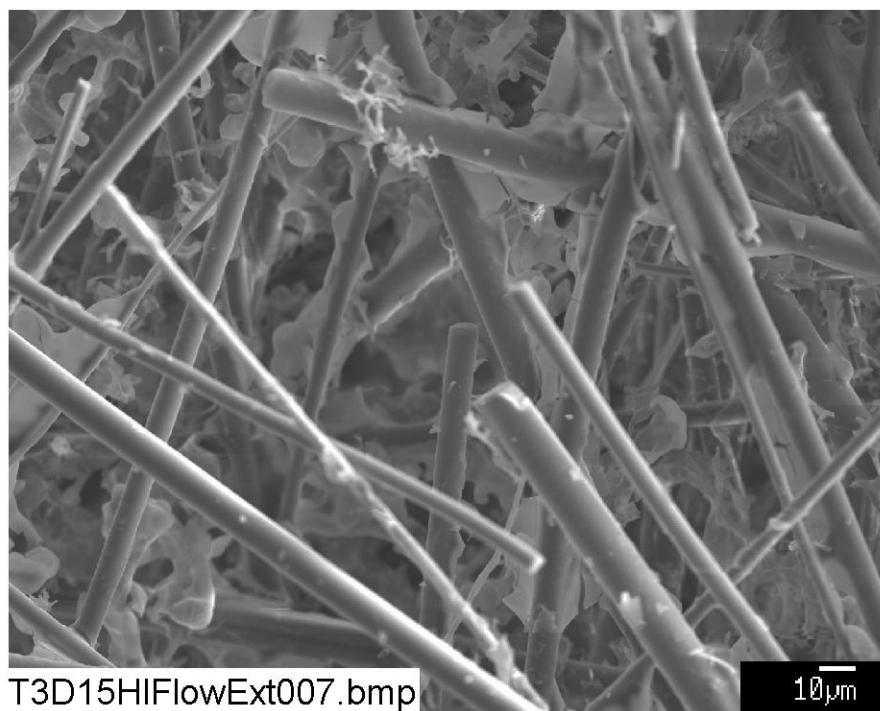


Figure B1-14: SEM image magnified 500 times for a Test #3 Day-15 high-flow exterior fiberglass sample. (T3D15HIFlowExt007)

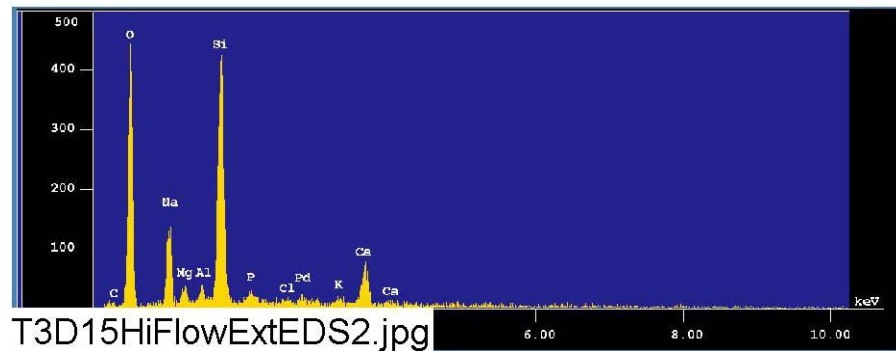


Figure B1-15: EDS counting spectrum for the flocculence deposits between the fibers on SEM image shown in Figure B1-14. (T3D15HiFlowExtEDS2)