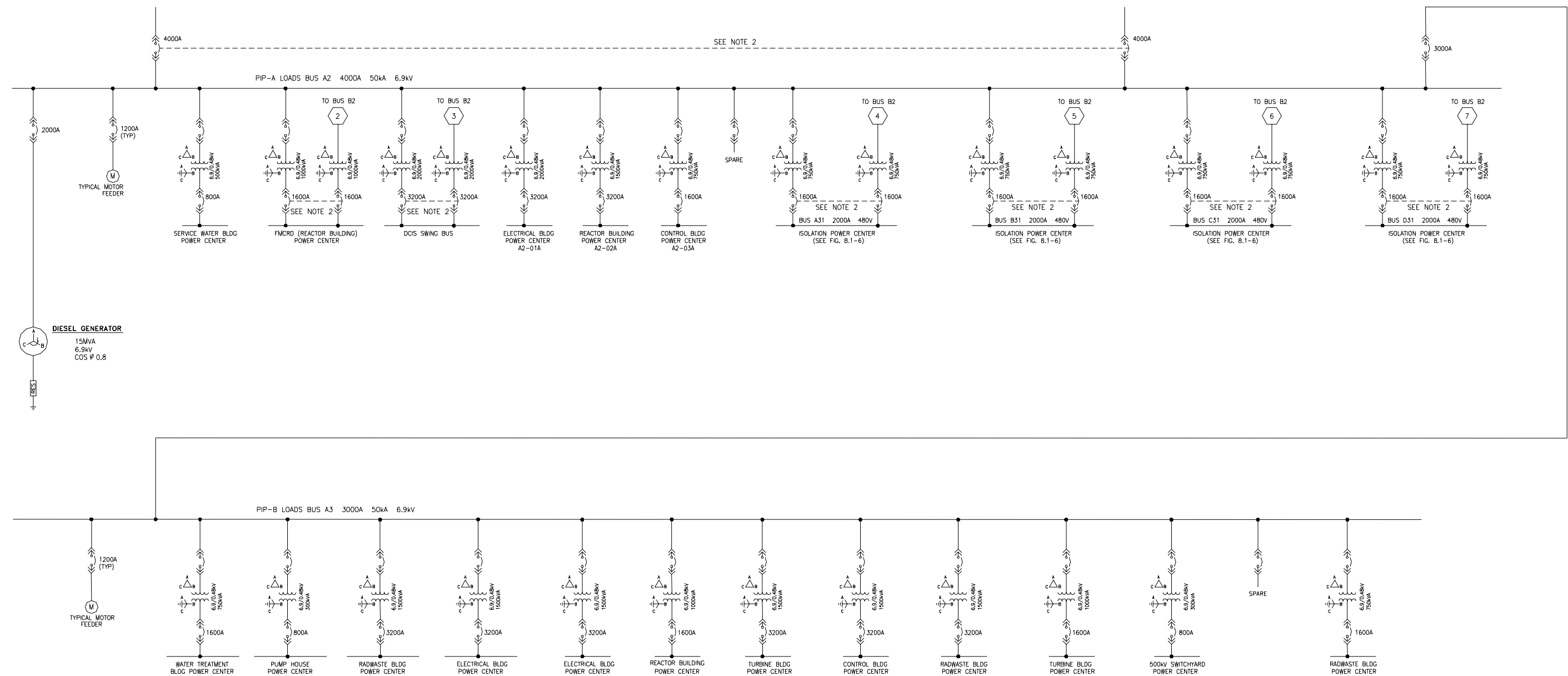
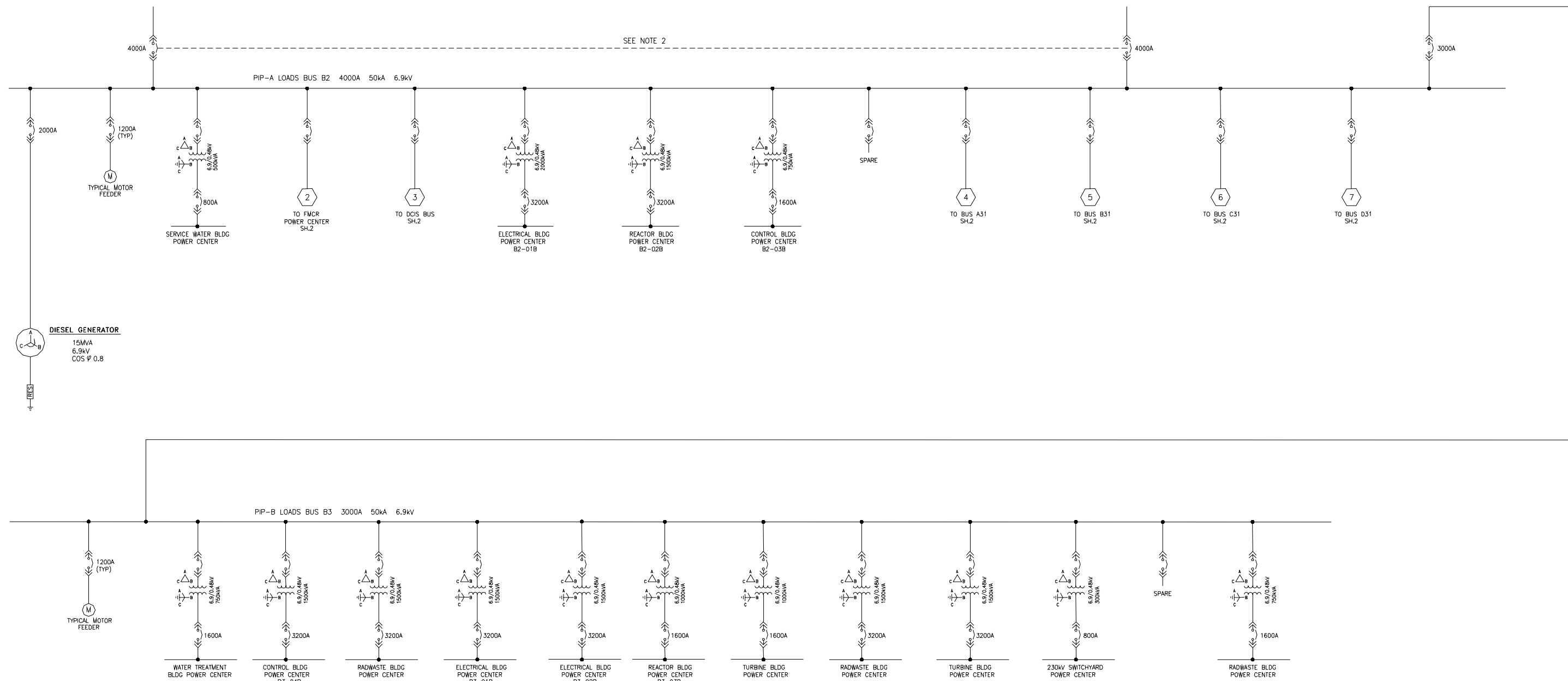


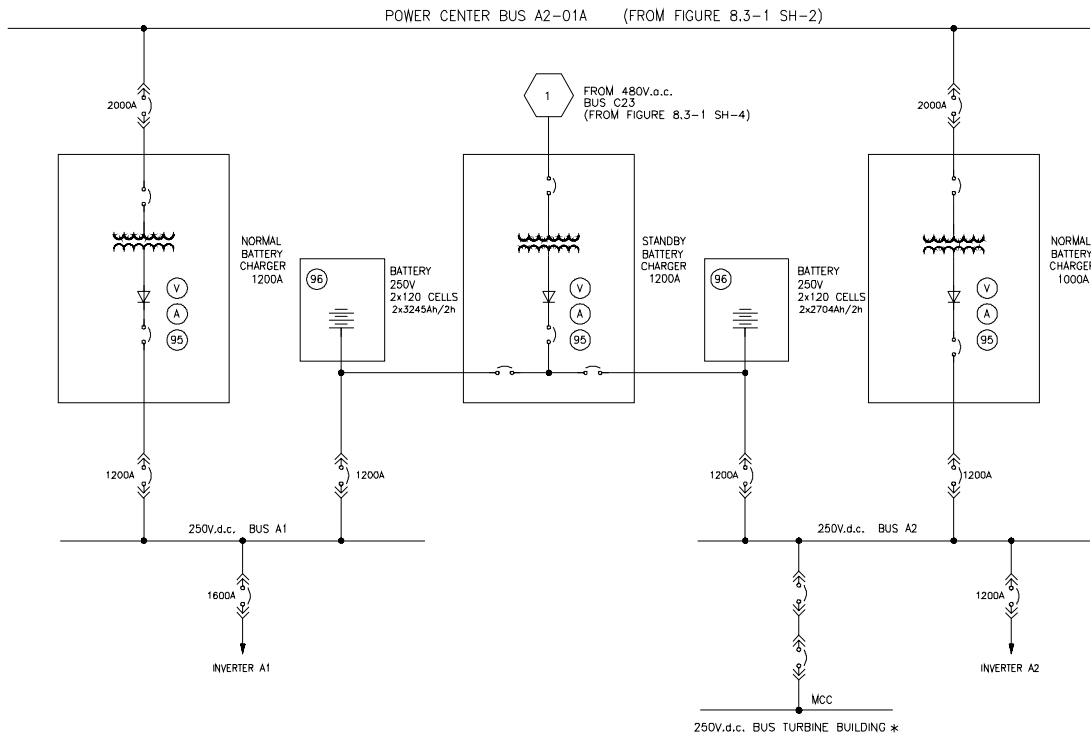
## EPDS One Line Sh 1



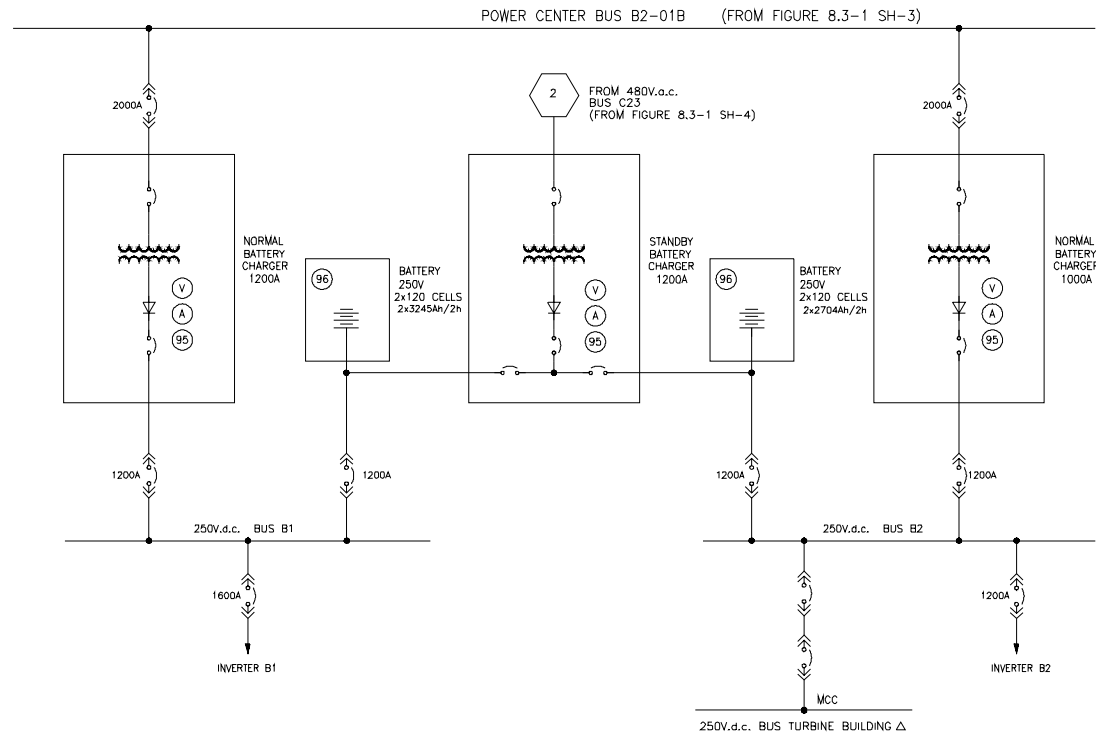
EPDS One Line Sh 2



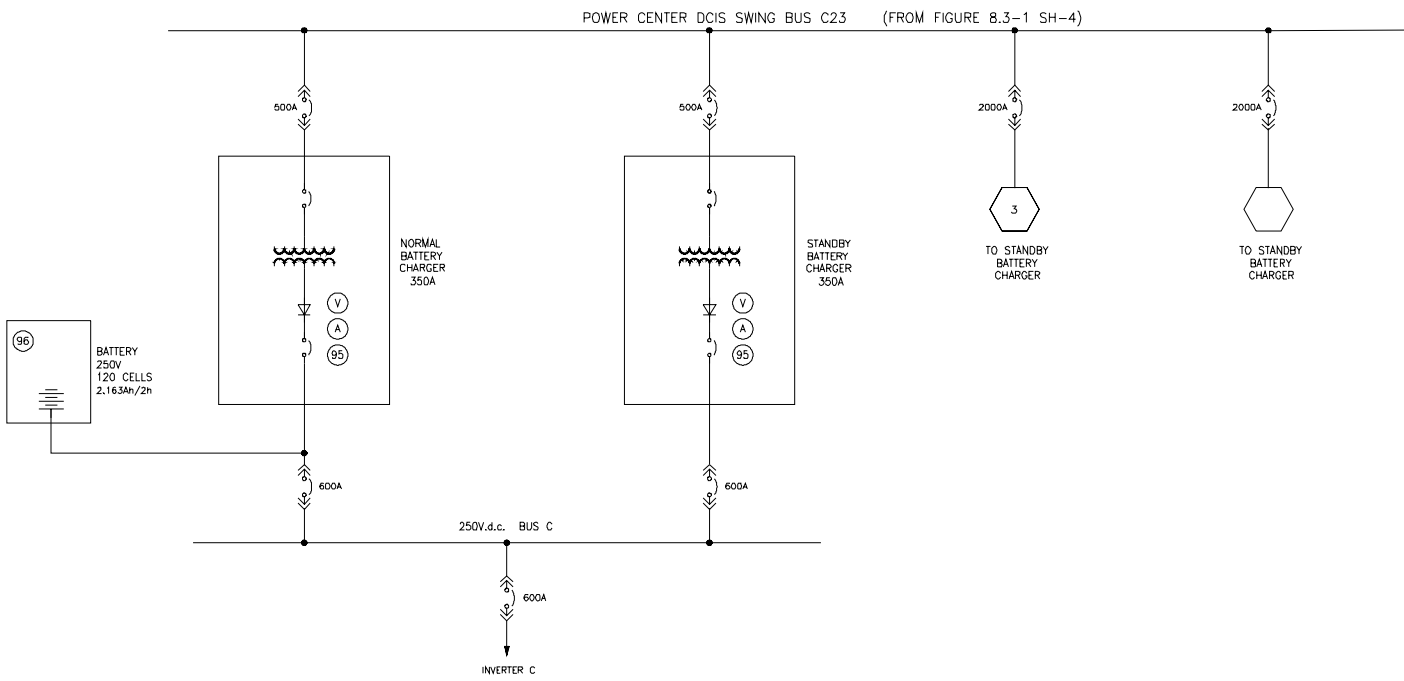
EPDS One Line Sh 3



## NON-CLASS 1E 250V.d.c. POWER SYSTEM

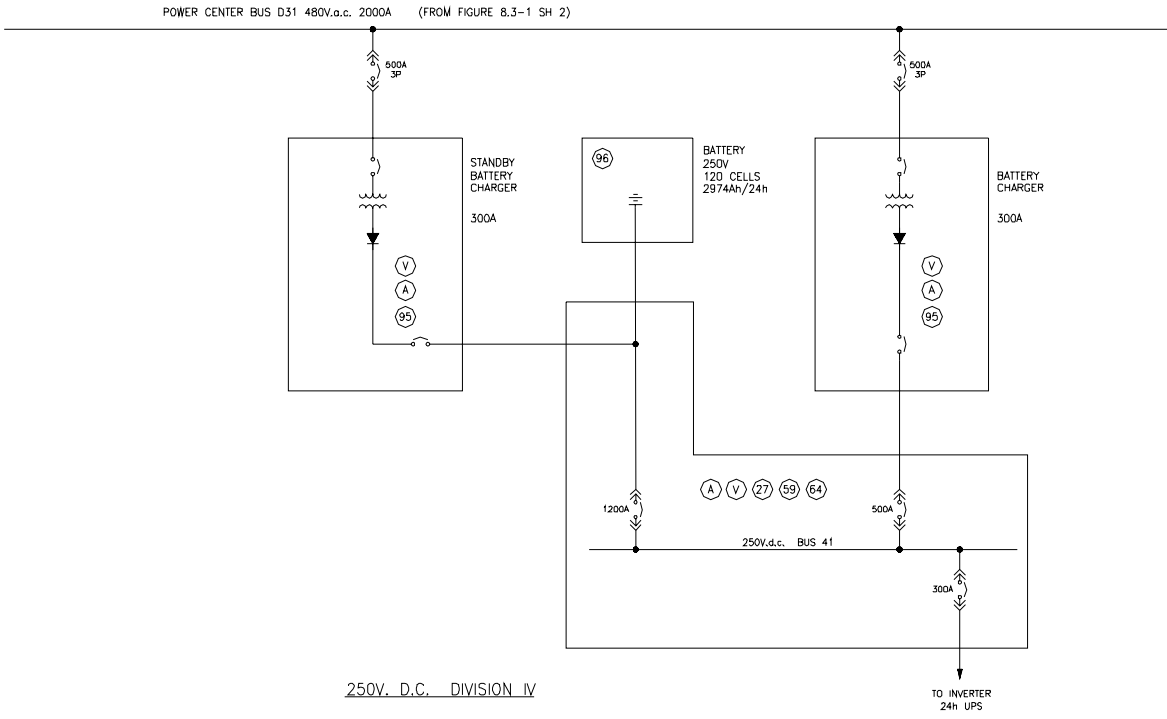
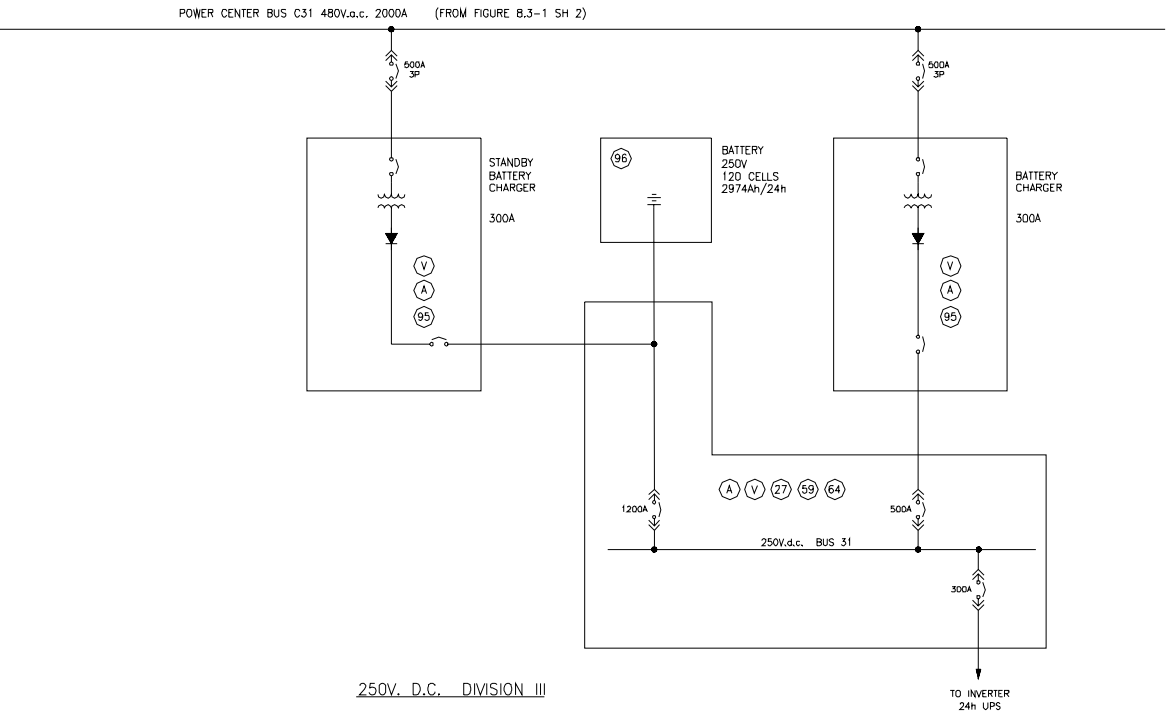
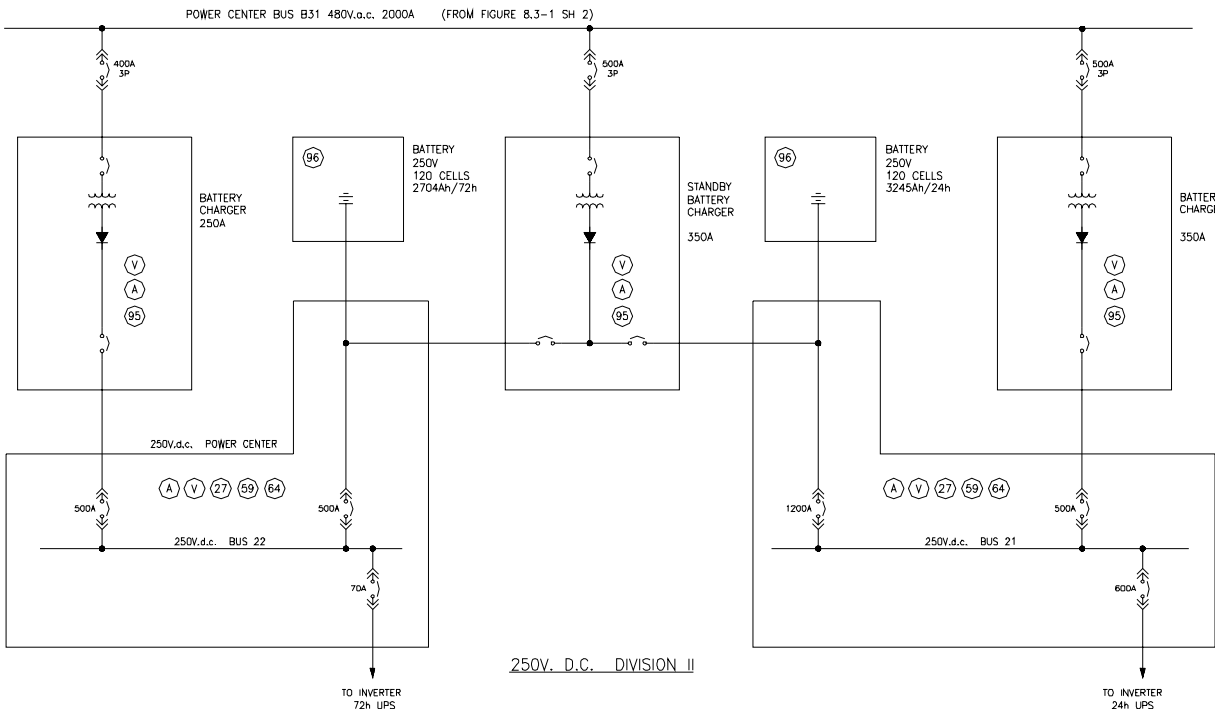
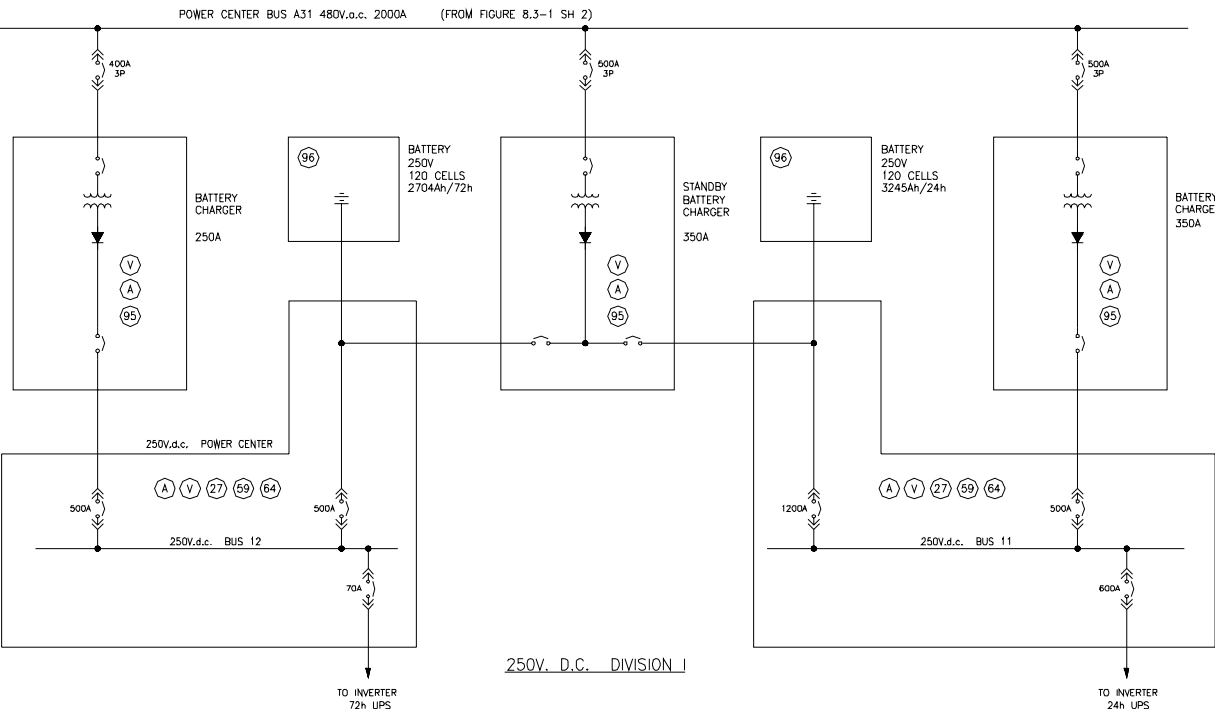


## NON-CLASS 1E 250V.d.c. POWER SYSTEM

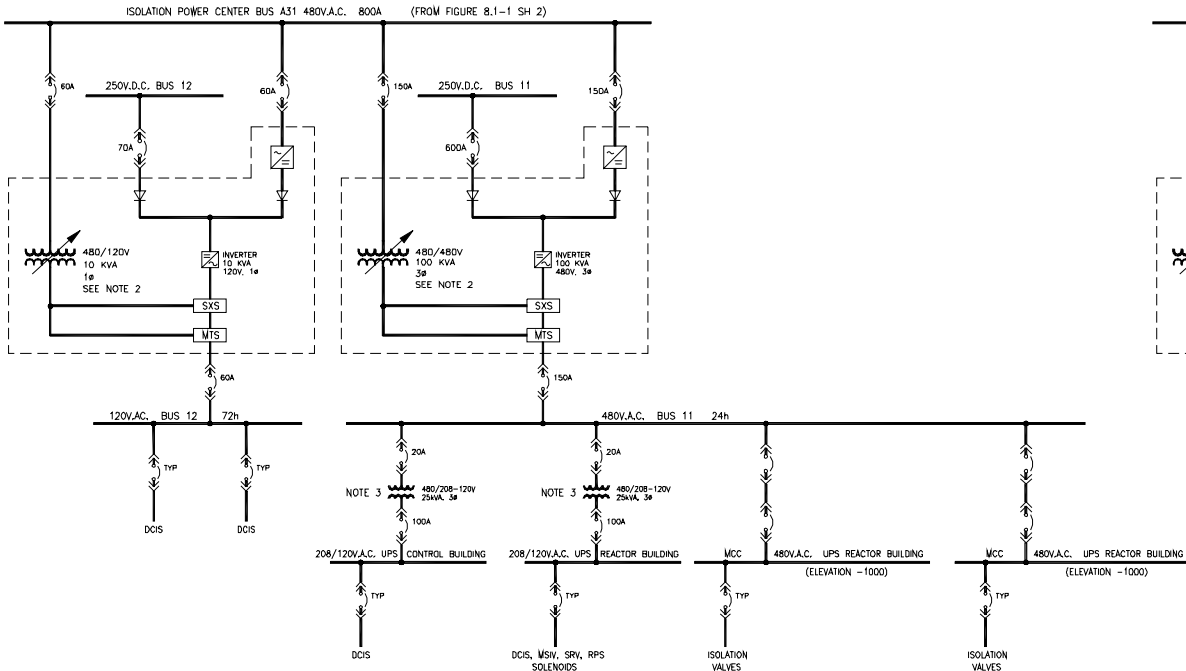


## Non-Class 1E 250 VDC Power System

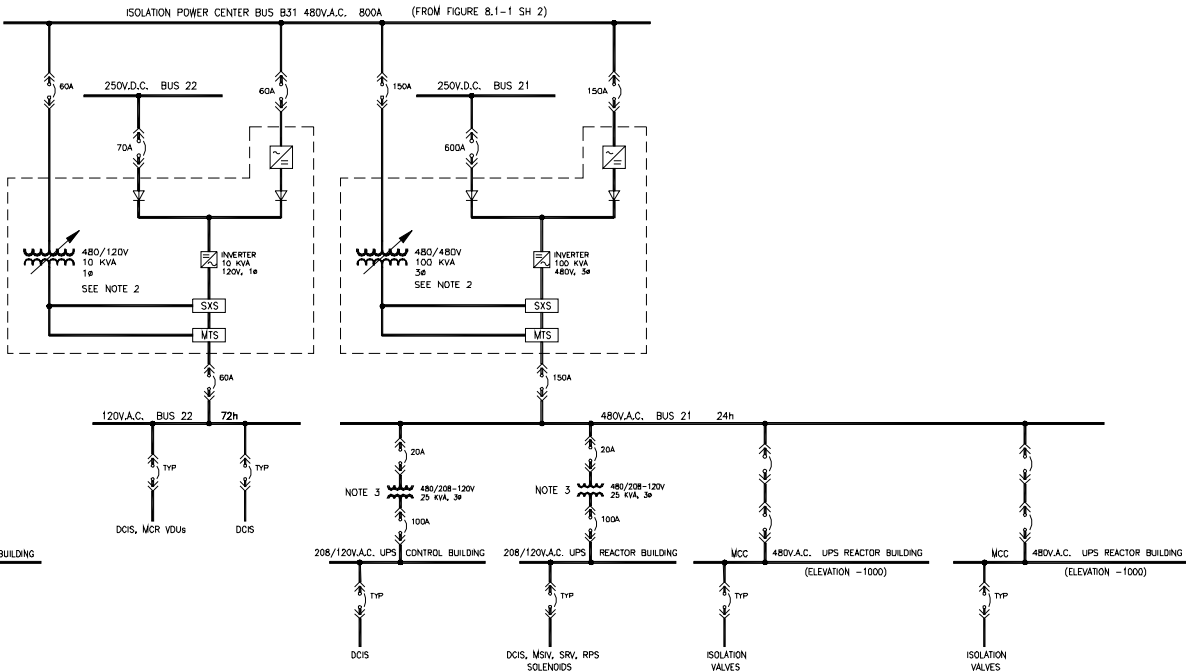
- \* -A FW MOTOR EMERGENCY OIL PUMP.  
-C FW MOTOR EMERGENCY OIL PUMP.  
△ -B FW MOTOR EMERGENCY OIL PUMP.  
~ ~V MOTOR EMERGENCY OIL PUMP.



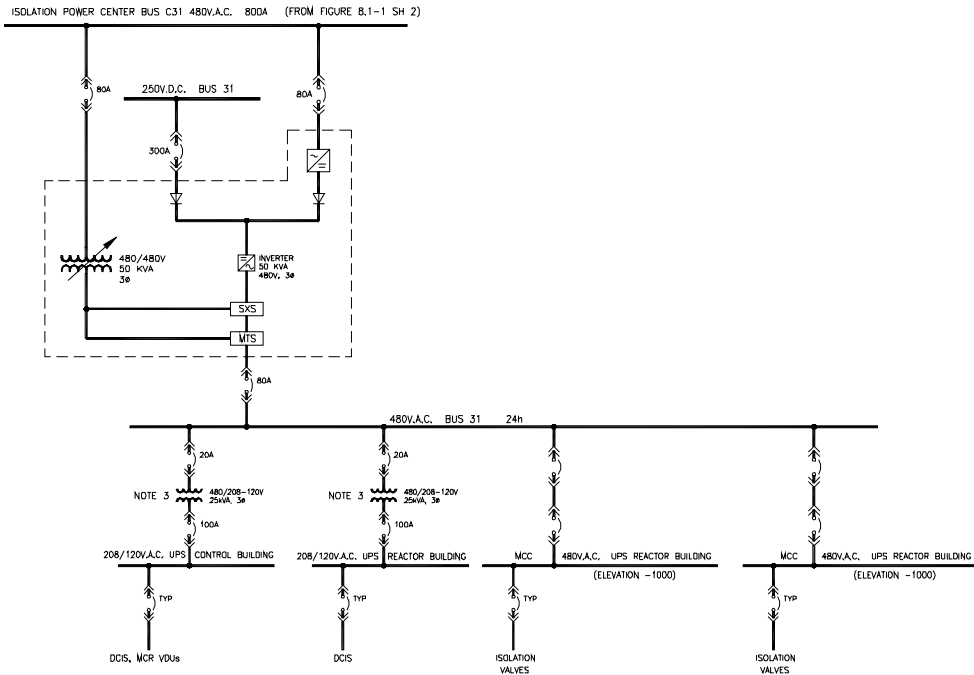
Class 1E 250 VDC Power System



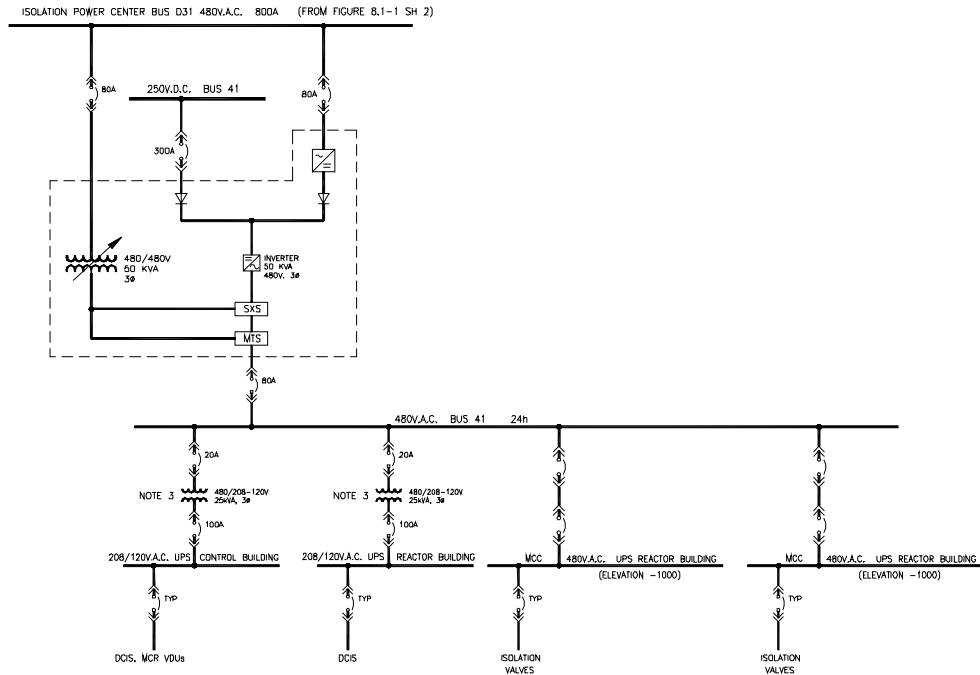
## CLASS 1E UNINTERRUPTIBLE POWER SUPPLY DIVISION



## CLASS 1E UNINTERRUPTIBLE POWER SUPPLY DIVISION



## CLASS 1E UNINTERRUPTIBLE POWER SUPPLY DIVISION



## CLASS 1E UNINTERRUPTIBLE POWER SUPPLY DIVISION

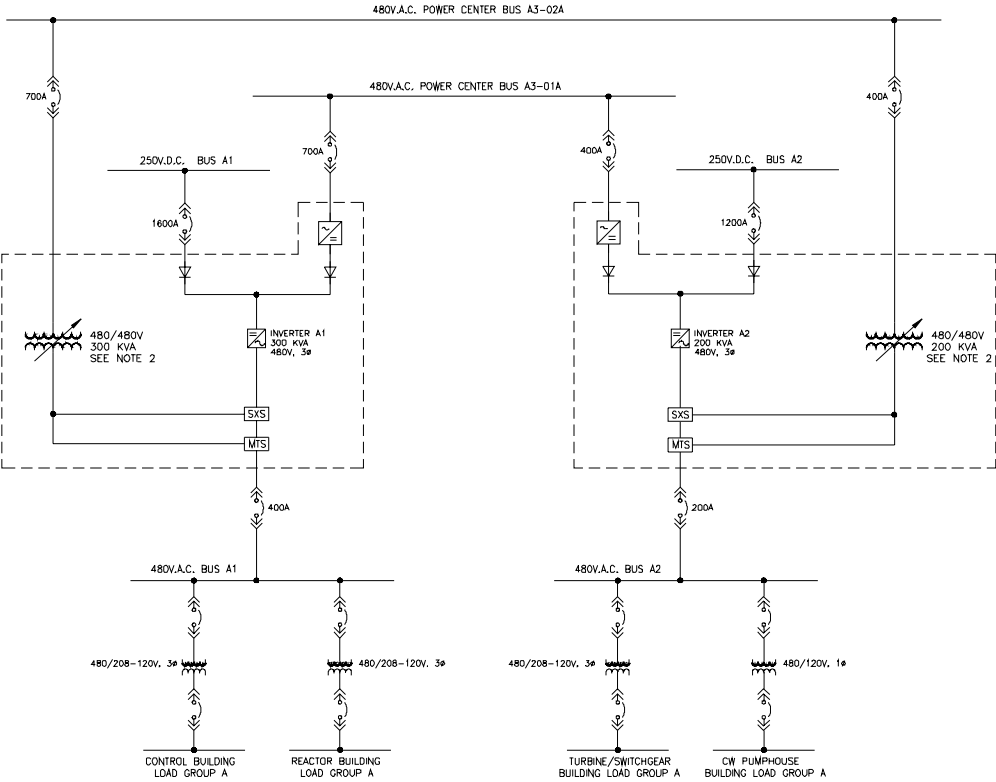
### DEVICE LEGEND

SXS: STATIC XFER SWITCH  
MTS: MAINTENANCE SWITCH

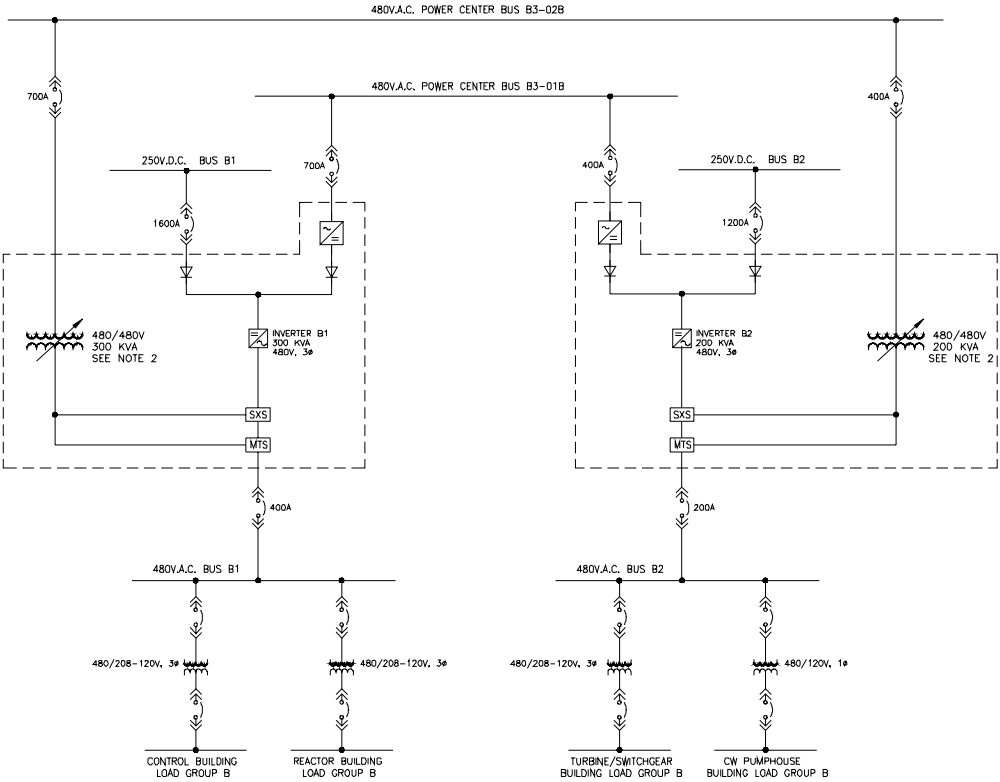
NOTES:

- 1- THE LOAD BREAKER FRAME AND THE BREAKER FRAME OF THE ISOLATION VALVES PANEL ARE PENDING.
- 2- REGULATING TRANSFORMERS ARE CLASS IE BUT DO NOT PERFORM ANY SAFETY FUNCTION.
- 3- POWER SUPPLY TO I & C LOADS OF THE R14 SYSTEM. THIS SYSTEM IS SUPPLIED FROM BOTH THE A.C. SYSTEM FROM THE BATTERIES VIA THE UNINTERRUPTIBLE POWER SYSTEM.

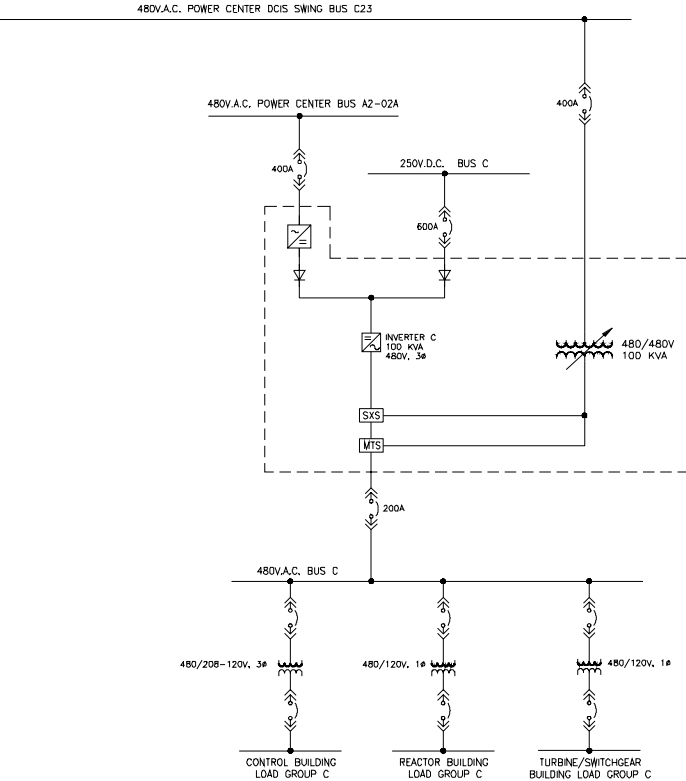
# Class 1E UPS Power System



NON CLASS 1E UNINTERRUPTIBLE POWER SUPPLY

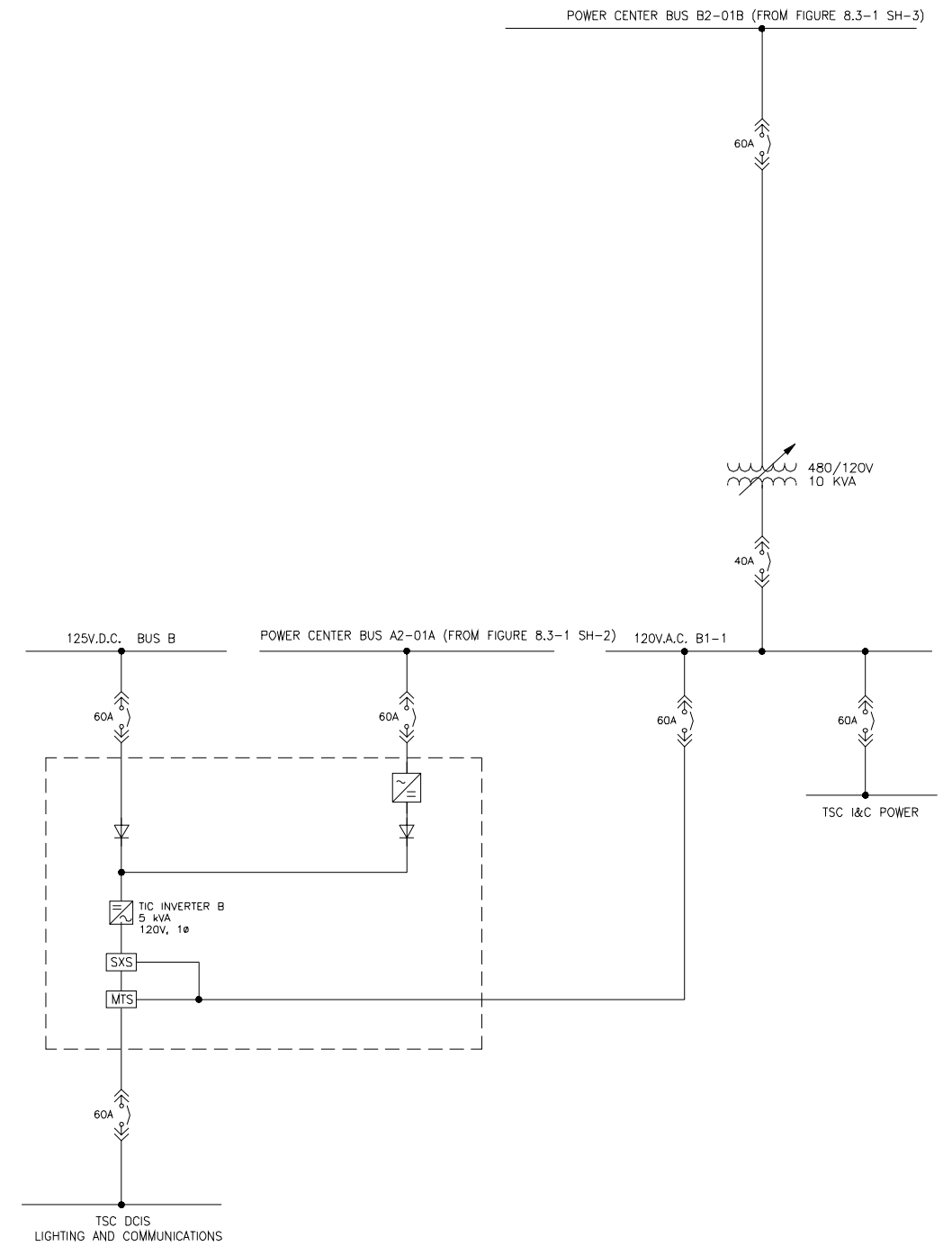
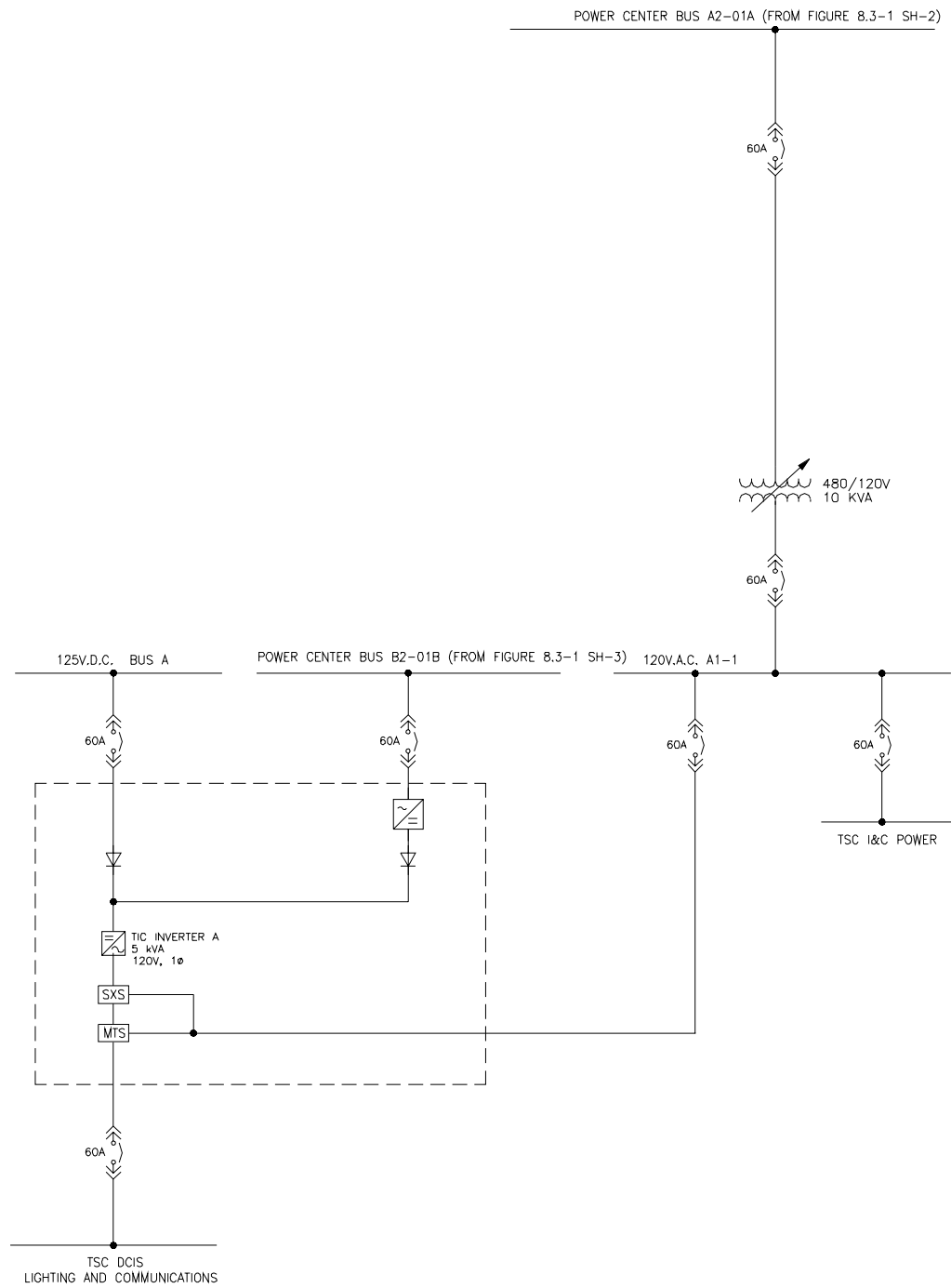


NON CLASS 1E UNINTERRUPTIBLE POWER SUPPLY



NON CLASS 1E UNINTERRUPTIBLE POWER SUPPLY

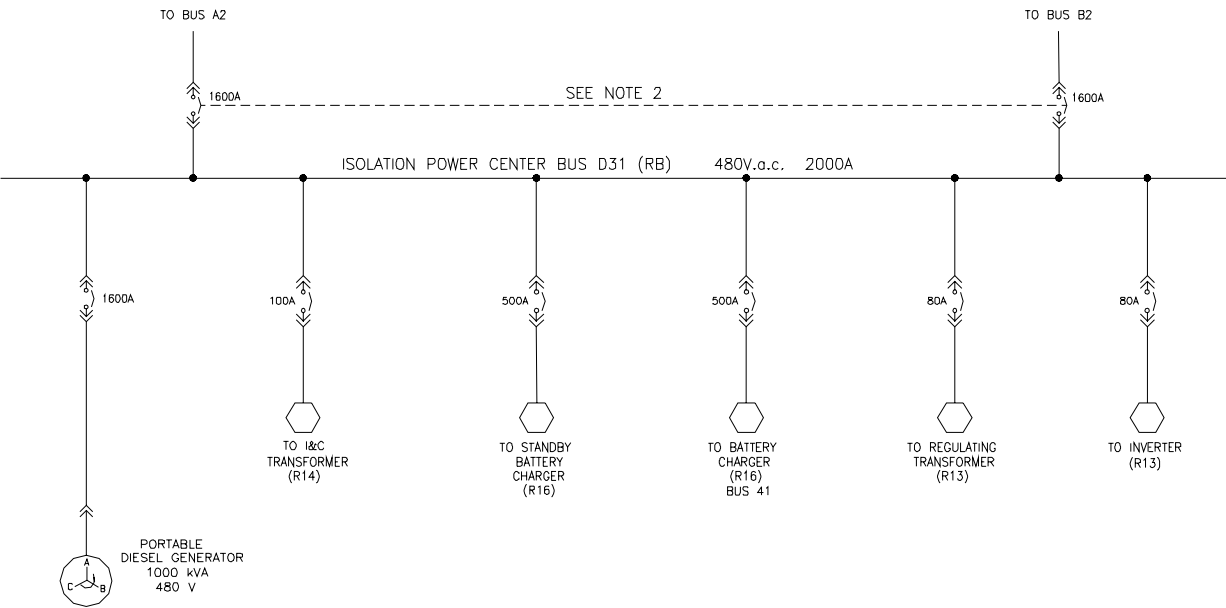
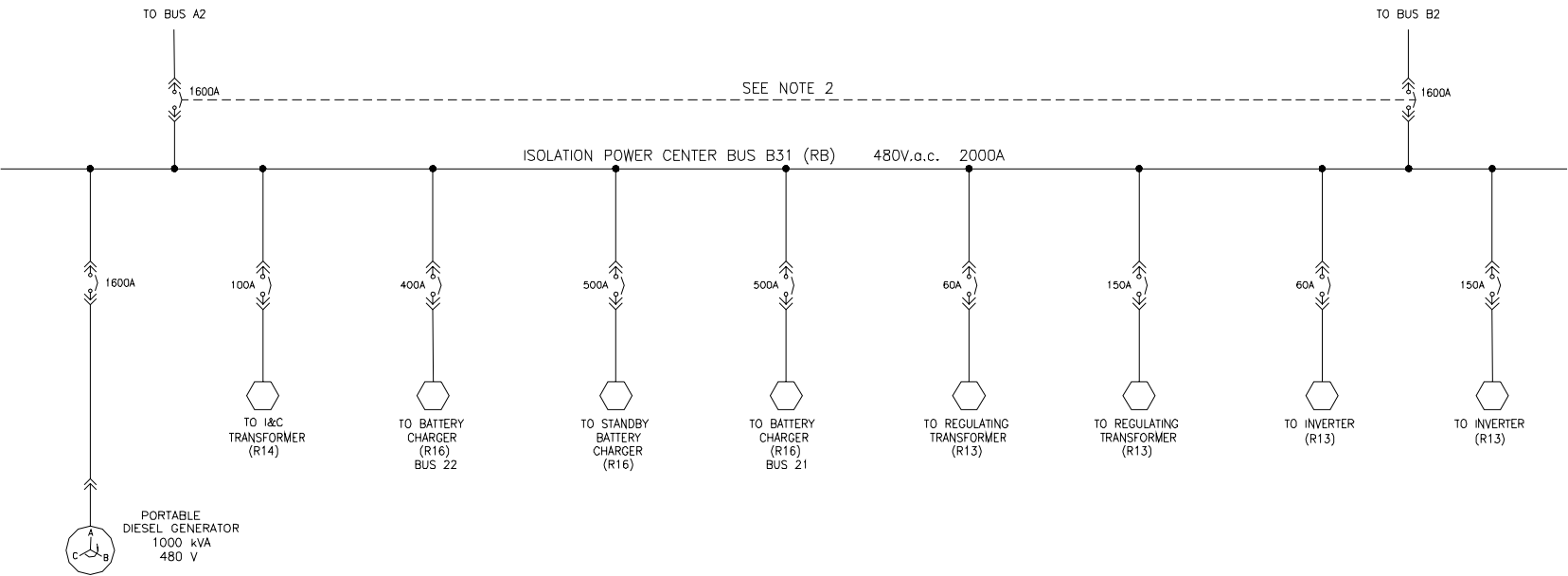
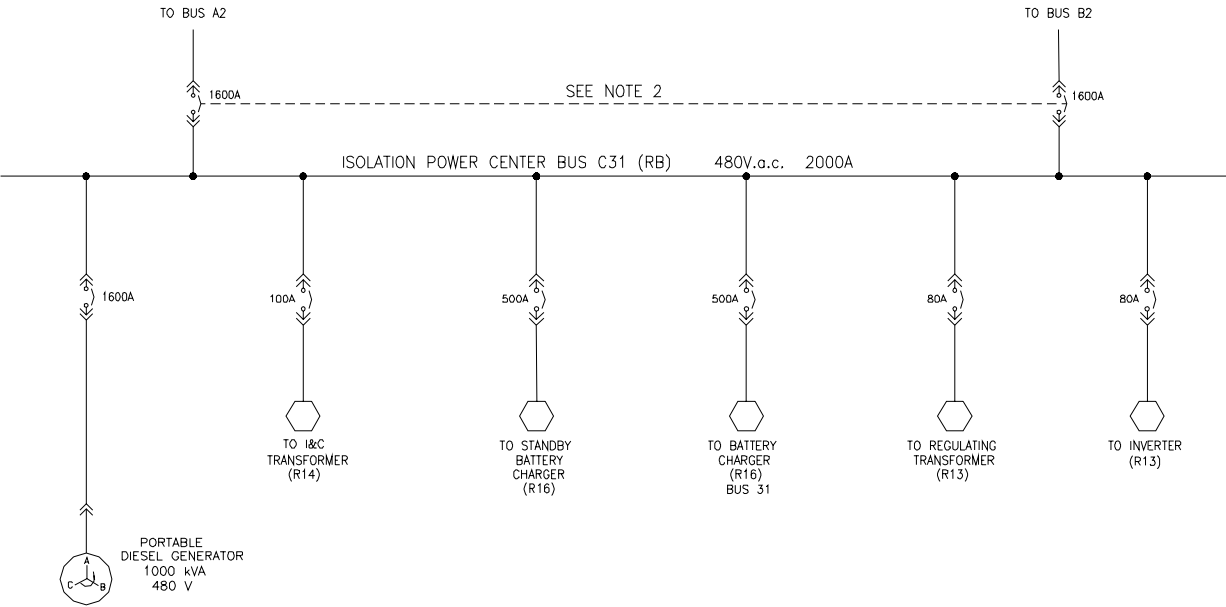
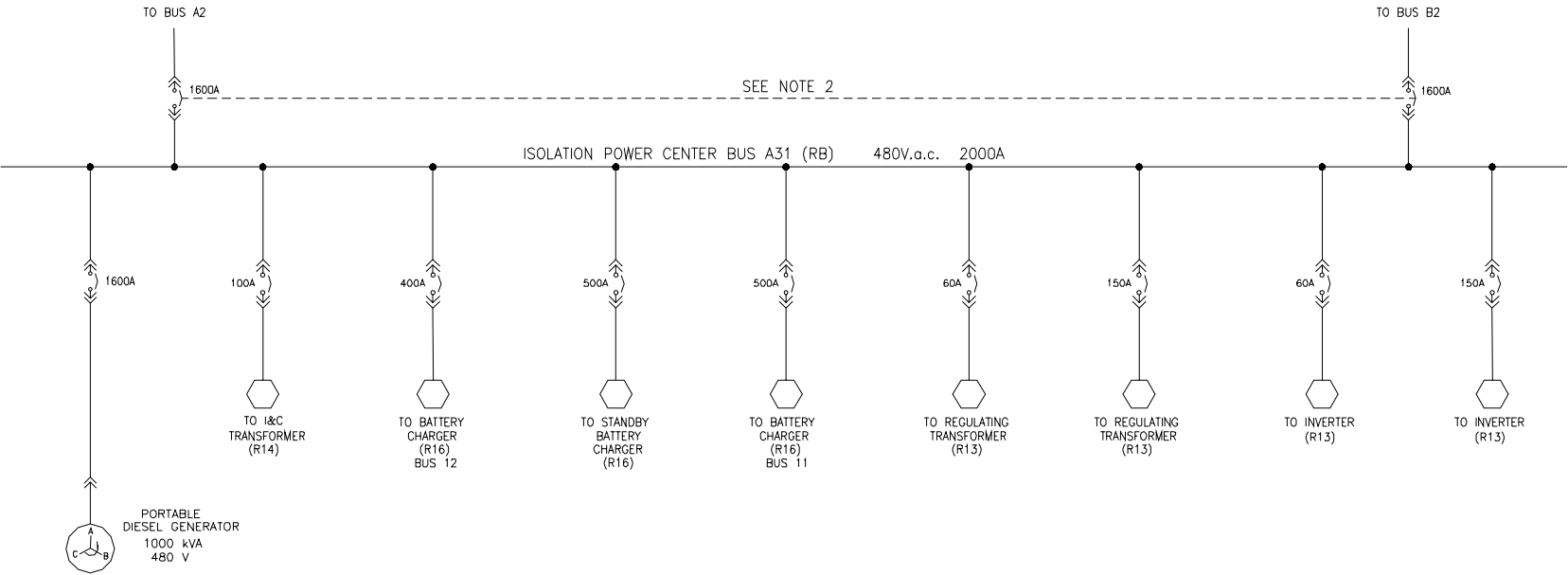
Non-Class 1E UPS Power System



NON CLASS 1E UNINTERRUPTIBLE TSC SYSTEM

Non Class 1E UPS TSC Power System





## 480 VAC Power System (Typical)

### NOTES

- 2.- THE BREAKERS SHALL BE ELECTRICALLY INTERLOCKED SO THAT ONLY ONE CAN BE CLOSED AT ANY TIME NEVERTHELESS THE TWO BOTH INCOMING CIRCUIT. BREAKERS COULD BE CLOSED WHEN A FAST TRANSFER OCCURS.