

C-E Power Systems
Combustion Engineering, Inc.
Route 21-A
Hematite, Missouri 63047

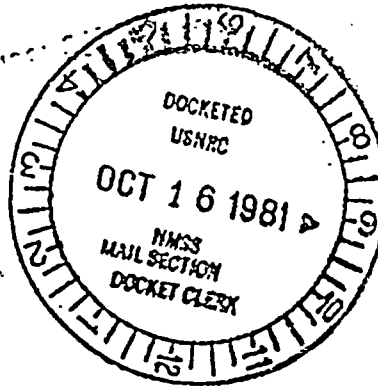
Tel. 314/937-4691
314/296-5640

70-36

Region

NIS/81/854

CE POWER
SYSTEMS



release

October 8, 1981

R

Mr. R. G. Page
Chief, Uranium Fuel Licensing Branch
Division of Fuel Cycle and Material Safety
U.S. Nuclear Regulatory Commission
Washington, D.C.

License SNM-33
Docket 70-36

Dear Mr. Page:

Enclosed are eight copies of Drawing D-5008-2023, which were omitted from our application dated June 19, 1981 for dry powder storage on conveyors and mezzanine storage of agglomerated press feed.

In addition, page 8-7 has been revised to show the correct drawing number.

Please advise if additional information is required.

Very truly yours,

COMBUSTION ENGINEERING, INC.

H. E. Eskridge

H. E. Eskridge
Supervisor, Nuclear Licensing,
Safety and Accountability

/wg
Enclosure

7-13

FEE EXEMPT

all 210 26/14/81

minor fee -

21002

8.1.5 Blending

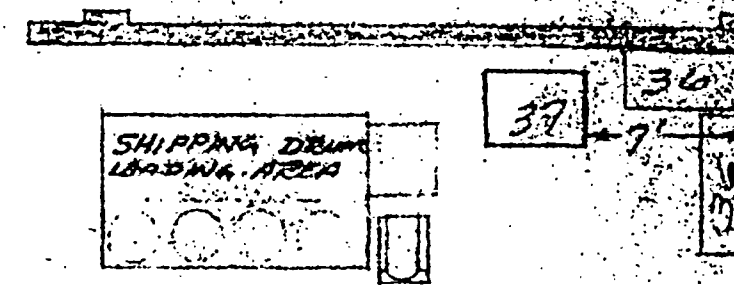
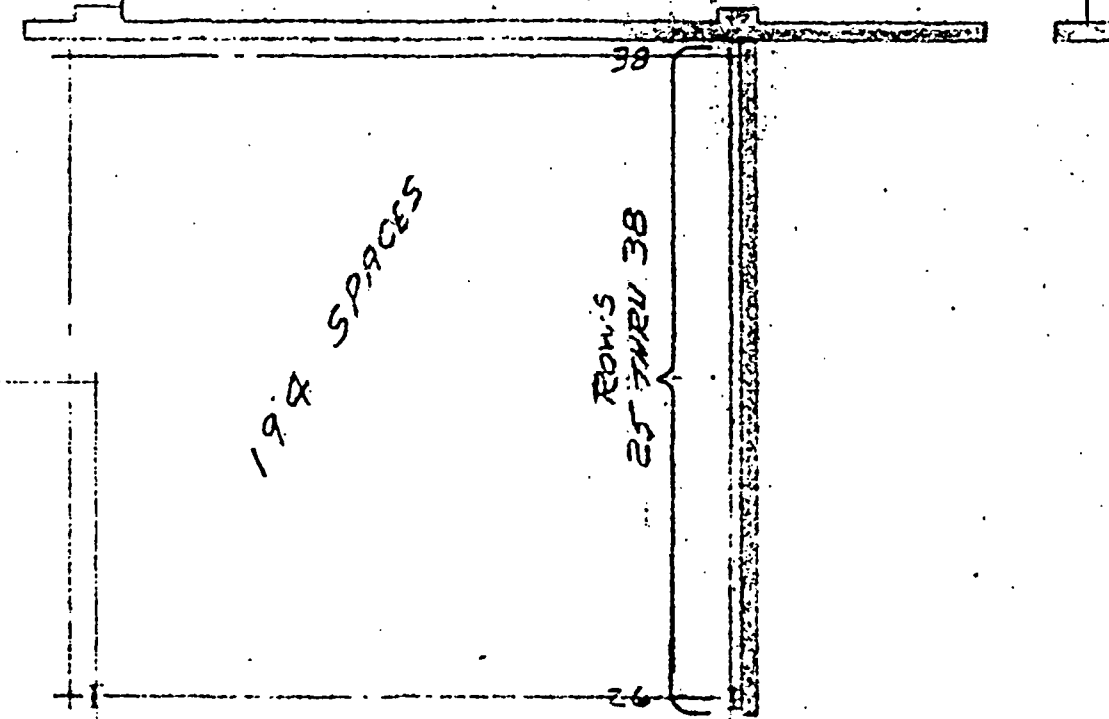
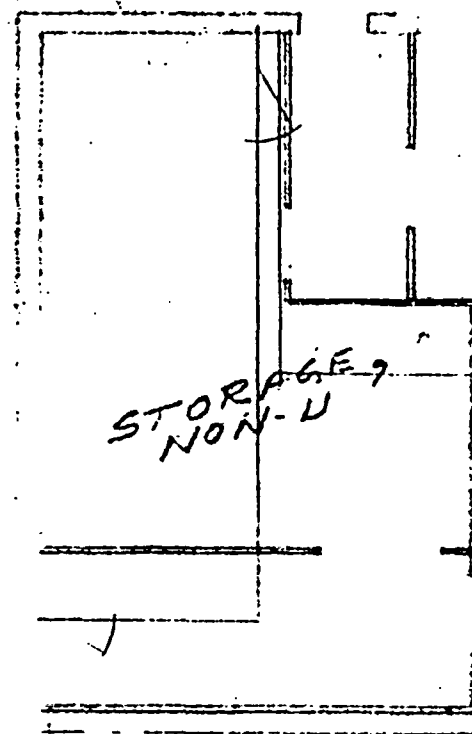
Blenders are 14 inches in diameter. The blending operation involves no heterogeneous material except for the moisture contained in agglomerated press feed recycled to the mill. The atmosphere is continuously monitored for humidity and an increase in moisture will cause an alarm and subsequent cessation of the blending operation. The Nuclear Safety Evaluation is provided in Section 9.0

Blenders are arranged on six foot centers forming an inline array and are located at least four feet from other SNM-bearing equipment.

* 8.1.6 Packaging and Storage

Dry UO_2 product is transferred into stainless steel cans (9.75" ϕ X 11" long) in the powder packaging hoods. A maximum of 30 Kg UO_2 per can is allowed. A 4 mil poly bag may be used as an inner liner. If used, it is sealed at the top with tape. The can lid is a friction-fit type which is sealed on the outside with tape. This precludes any in-leakage of moisture from atmospheric humidity (the powder is not hygroscopic anyway) or flooding. Thus, the UO_2 product is kept dry (typically <.05% moisture) and moderation control is assured under all conditions. Section 9.3 describes all moderation controls in detail.

The sealed cans of dry UO_2 product are then transferred to one of 5 roller conveyors on the north side of Building #255 as shown in Items 58, 59 and 60 of Drawing D-5008-2023, dated 2/5/81. The entire building is above the 100 year flood level as determined by the U. S. Army Corps of Engineers in their Special Study for Joachim Creek, dated March 1980. Even if flooding were possible, the 30 Kg weight of the cans containing high density UO_2 would prevent them from floating and being moved. Building #255 is not sprinklered and firefighting would be by dry chemical means. Thus, criticality safety is assured through moderation control (\leq 4.1% enriched UO_2 cannot be made critical without moderation).

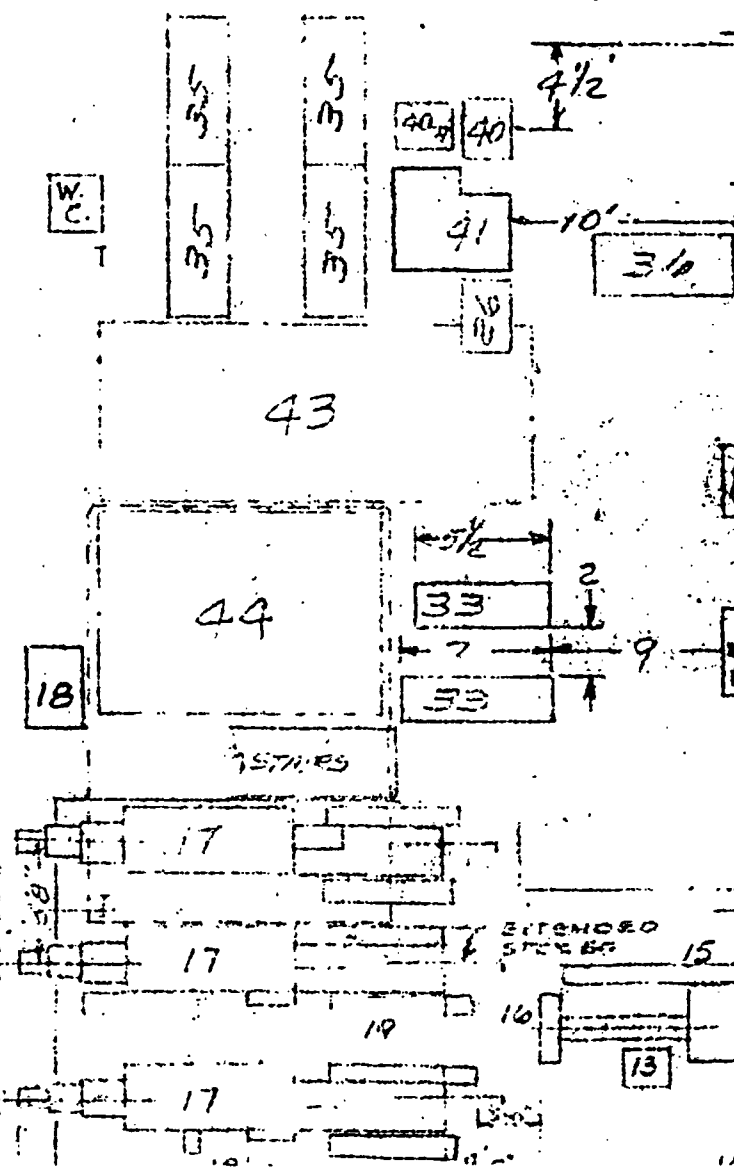
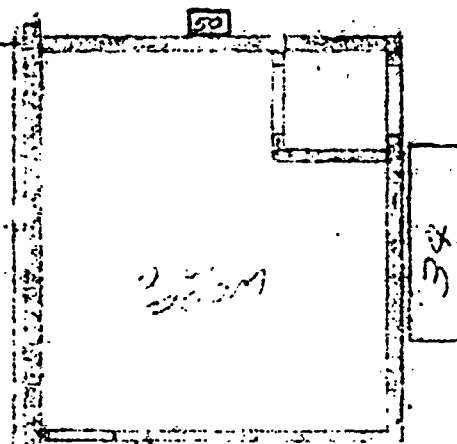


260 SPACES

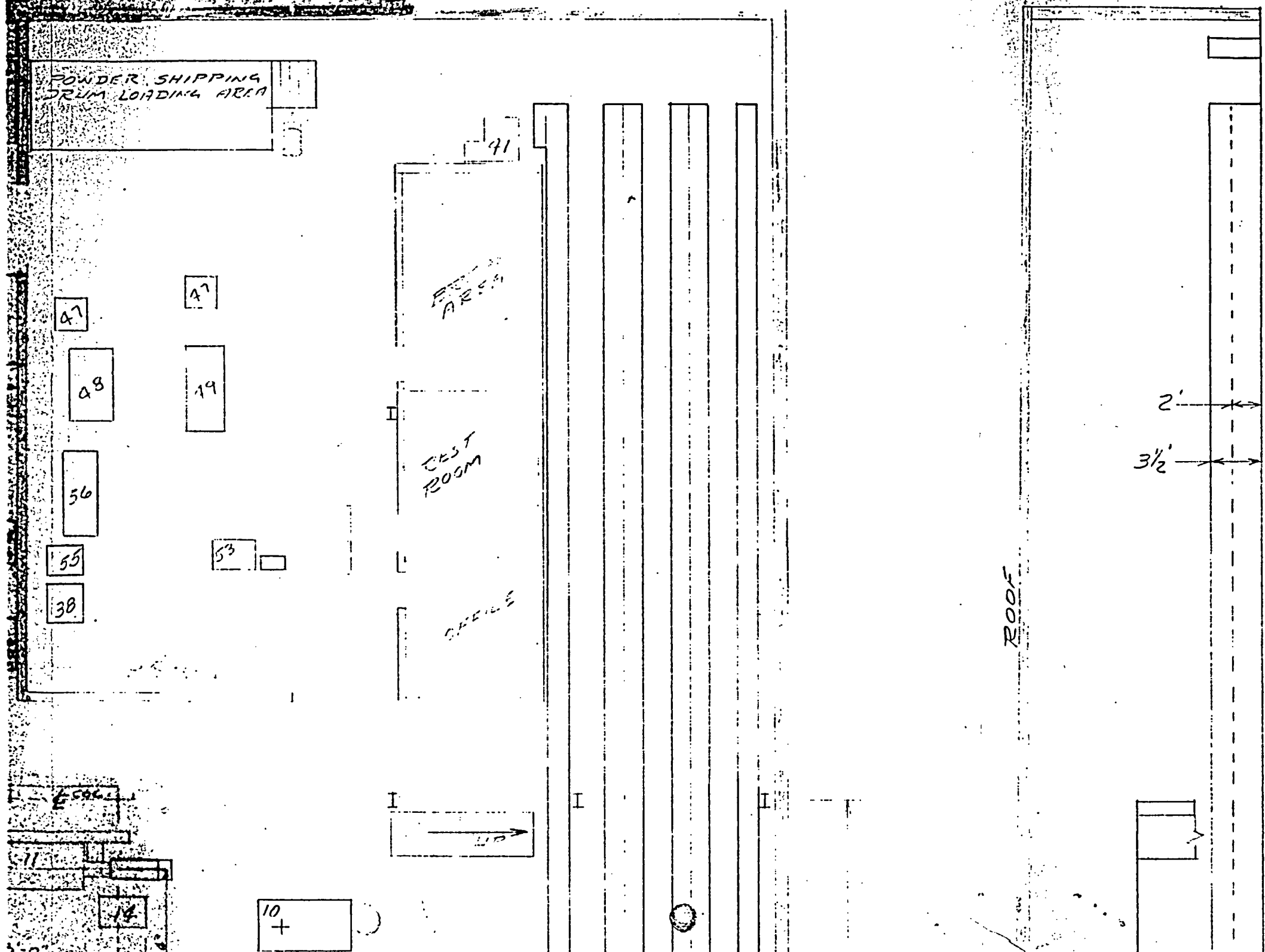
Bldg 255-3

334 SPACES

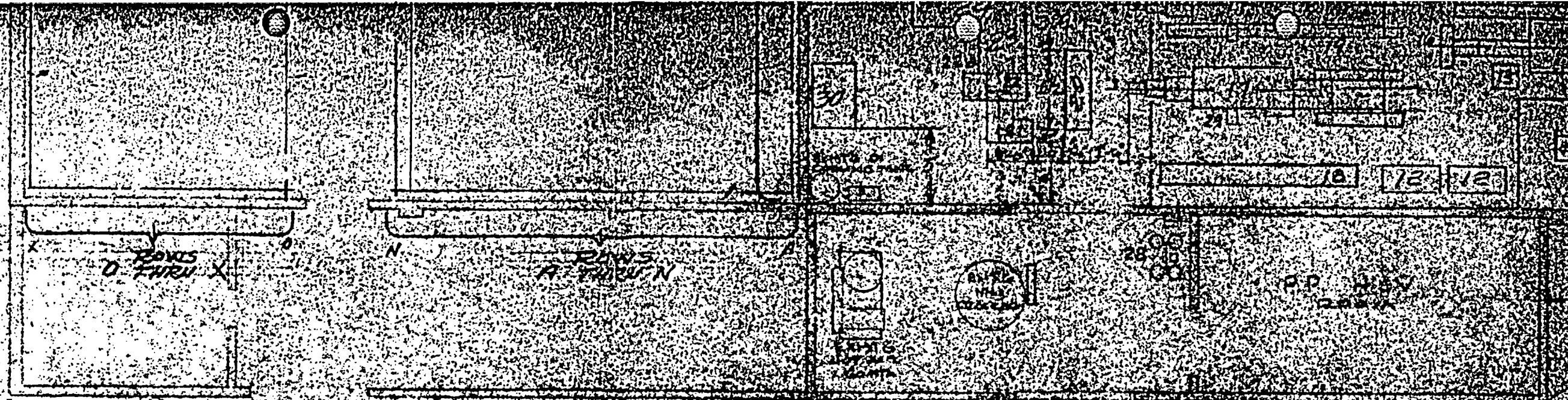
ROW'S
1 THRU 24



MATERIAL FOR COMPLETE ASSEMBLY



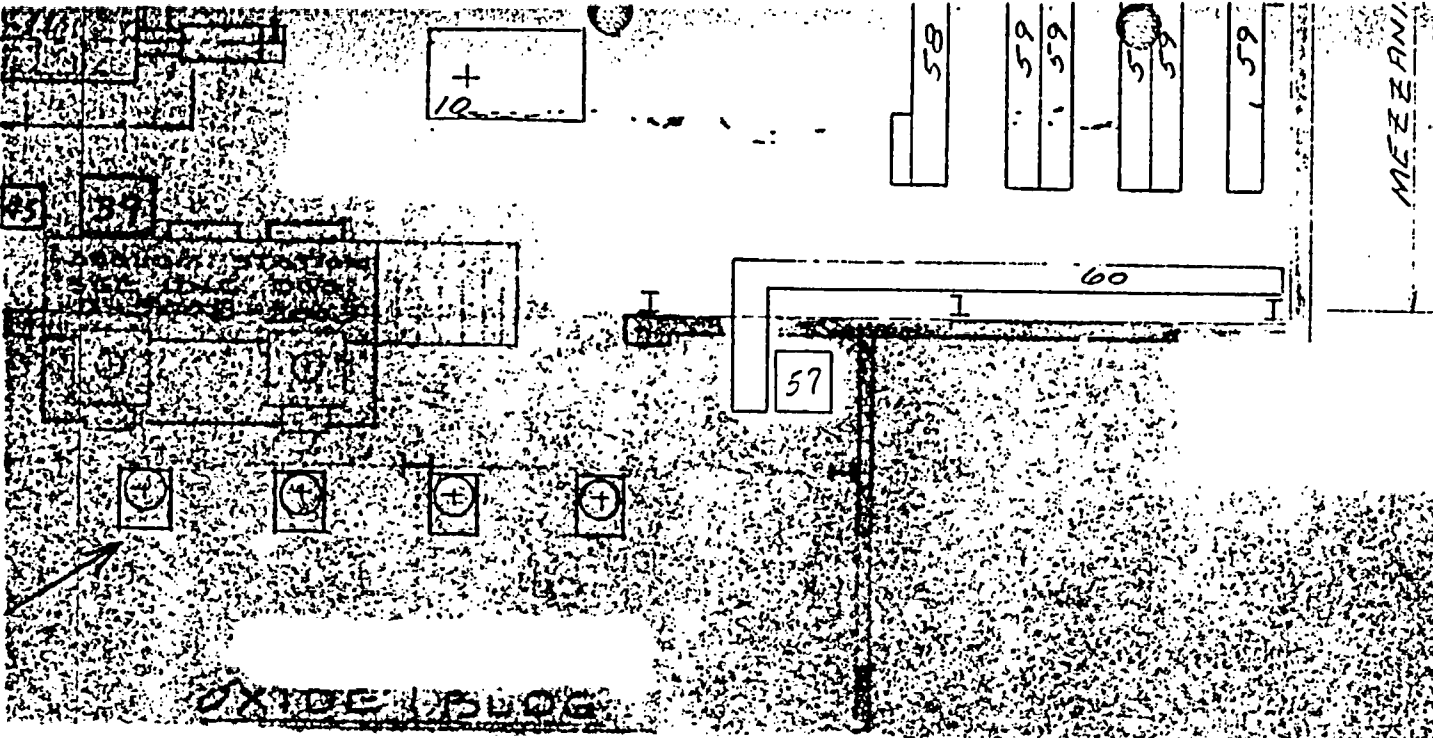
1. Powder Shipping Drum Loading Area
2. Rest Room
3. Office
4. Roof
5. Concrete Floor
6. Tray Cart
7. Press Control Panel
8. Press Feed Hopper
9. Press Feed Hopper
10. Press
11. Bagging Machine
12. Bagging Machine Control Panel
13. Bagging Machine Discharge
14. Bagging Machine Discharge
15. Bagging Machine Discharge
16. Bagging Machine Discharge
17. Bagging Machine Discharge
18. Bagging Machine Discharge
19. Bagging Machine Discharge
20. Bagging Machine Discharge
21. Bagging Machine Discharge
22. Bagging Machine Discharge
23. Bagging Machine Discharge
24. Bagging Machine Discharge
25. Bagging Machine Discharge
26. Bagging Machine Discharge
27. Bagging Machine Discharge
28. Bagging Machine Discharge
29. Bagging Machine Discharge
30. Bagging Machine Discharge
31. Bagging Machine Discharge
32. Bagging Machine Discharge
33. Bagging Machine Discharge
34. Bagging Machine Discharge
35. Bagging Machine Discharge
36. Bagging Machine Discharge
37. Bagging Machine Discharge
38. Bagging Machine Discharge
39. Bagging Machine Discharge
40. Bagging Machine Discharge
41. Bagging Machine Discharge
42. Bagging Machine Discharge
43. Bagging Machine Discharge
44. Bagging Machine Discharge
45. Bagging Machine Discharge
46. Bagging Machine Discharge
47. Bagging Machine Discharge
48. Bagging Machine Discharge
49. Bagging Machine Discharge
50. Bagging Machine Discharge
51. Bagging Machine Discharge
52. Bagging Machine Discharge
53. Bagging Machine Discharge
54. Bagging Machine Discharge
55. Bagging Machine Discharge
56. Bagging Machine Discharge
57. Bagging Machine Discharge
58. Bagging Machine Discharge
59. Bagging Machine Discharge
60. Bagging Machine Discharge
61. Bagging Machine Discharge
62. Bagging Machine Discharge
63. Bagging Machine Discharge
64. Bagging Machine Discharge
65. Bagging Machine Discharge
66. Bagging Machine Discharge
67. Bagging Machine Discharge
68. Bagging Machine Discharge
69. Bagging Machine Discharge
70. Bagging Machine Discharge
71. Bagging Machine Discharge
72. Bagging Machine Discharge
73. Bagging Machine Discharge
74. Bagging Machine Discharge
75. Bagging Machine Discharge
76. Bagging Machine Discharge
77. Bagging Machine Discharge
78. Bagging Machine Discharge
79. Bagging Machine Discharge
80. Bagging Machine Discharge
81. Bagging Machine Discharge
82. Bagging Machine Discharge
83. Bagging Machine Discharge
84. Bagging Machine Discharge
85. Bagging Machine Discharge
86. Bagging Machine Discharge
87. Bagging Machine Discharge
88. Bagging Machine Discharge
89. Bagging Machine Discharge
90. Bagging Machine Discharge
91. Bagging Machine Discharge
92. Bagging Machine Discharge
93. Bagging Machine Discharge
94. Bagging Machine Discharge
95. Bagging Machine Discharge
96. Bagging Machine Discharge
97. Bagging Machine Discharge
98. Bagging Machine Discharge
99. Bagging Machine Discharge
100. Bagging Machine Discharge



POWDER
PK'G HOODS

EQUIPMENT FLOOR PLAN

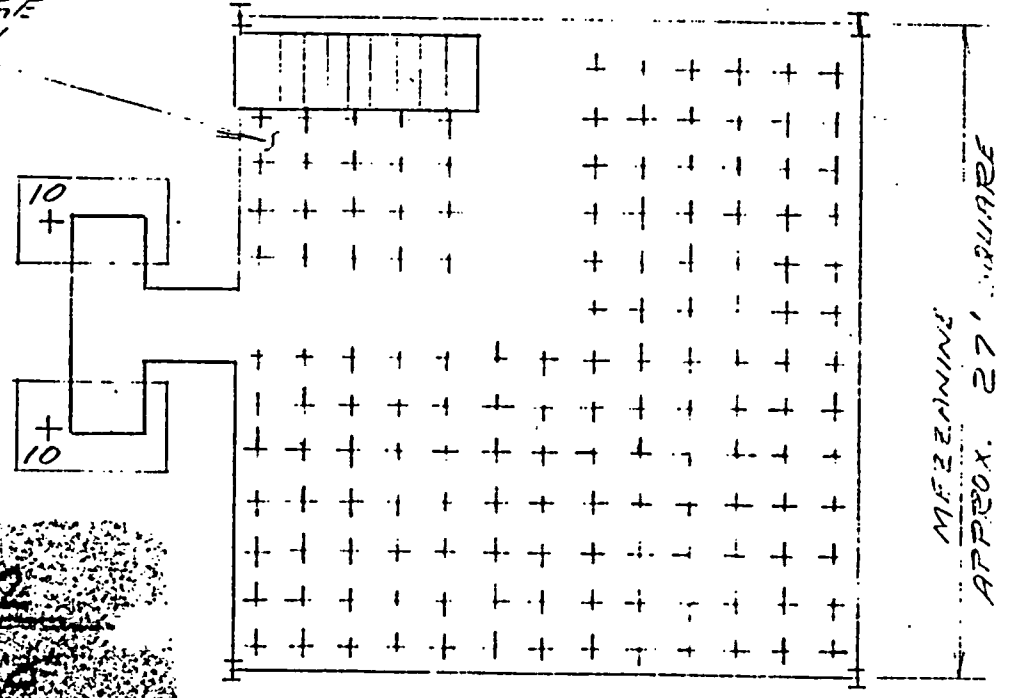




EL. VIEW

- 55. COLLECTION HOOD (MICRONIZER)
- 56. MICRONIZER HOOD
- 57. PRODUCT TO AGGLOM. HOOD
- 58. 2 TIER POWER CONVEYOR
- 59. 2 TIER CONVEYOR
- 60. ONE TIER CONVEYOR

THESE STORAGE SPACES ARE ON 24" CENTERS



PROPOSED LAYOUT OF BLDG. 255-1, 1ST FLOOR & MEZZANINE

D-500E-2023