

**MALLINCKRODT  
NUCLEAR  
CORPORATION**

SAINT LOUIS 7, MISSOURI • U.S.A. • CENTRAL 1-8980

5pg  
DOCKET NO. 70-36  
EX-111

Plant  
Hematite, Missouri

August 16, 1960

Mr. J. C. Dolaney  
Licensing Branch  
Division of Licensing and Regulation  
U. S. Atomic Energy Commission  
Washington 25, D. C.

SUBJECT: Extension of SM-33 to include a Bird Cage for  
Eight Inch Diameter UF<sub>6</sub> Cylinder

REFERENCE: Our Letter of July 8, 1960, Subject as Above

Gentlemen:

Enclosed are sketches SK 7, 7-1, and 9 which should complete the information you require in order to approve the subject request for extension of SM-33.

The eight inch UF<sub>6</sub> cylinder will be mounted in the bird cage with the valve end down. The valve cover will be enclosed in the bottom support as shown on SK 7-1. Lateral movement of the cylinder on the bottom support will be prevented by the 1/4" bar added to the bottom support as shown on SK 7-1.

Lateral movement of the cylinder at the top will be prevented by the angle iron bracket shown on SK 7. This bracket consists of two parts. Each part is hinged to the existing framework so that it may be swung out of the way when the larger MD cylinder is shipped.

Finally the cylinder is held down in the same manner depicted in the detail titled "Cylinder Securing Device" shown on MW 3226-3. The only modification necessary is the addition of two 12 1/2 inch long bolts as shown on SK 7-1 with their location shown on SK 7. The existing 6 1/2 inch long bolts will remain for anchoring the MD cylinders.



THE WORLD'S FIRST AND LEADING PRODUCER OF NUCLEAR FUELS

B-67

Mr. J. C. Delaney  
August 15, 1960  
Page Two--

DOCKET NO. 20-364  
EXTRA

To facilitate loading and unloading the eight inch cylinder, the top angle on the front side of the bird cage will be removed. This angle will then be used as additional bracing as shown on SK 9.

Please do not hesitate to call collect should you require additional information prior to approving the requested extension of SNM-33.

Respectfully yours,

MALLINCKRODT NUCLEAR CORPORATION



L. J. Swallow  
Hematite Plant

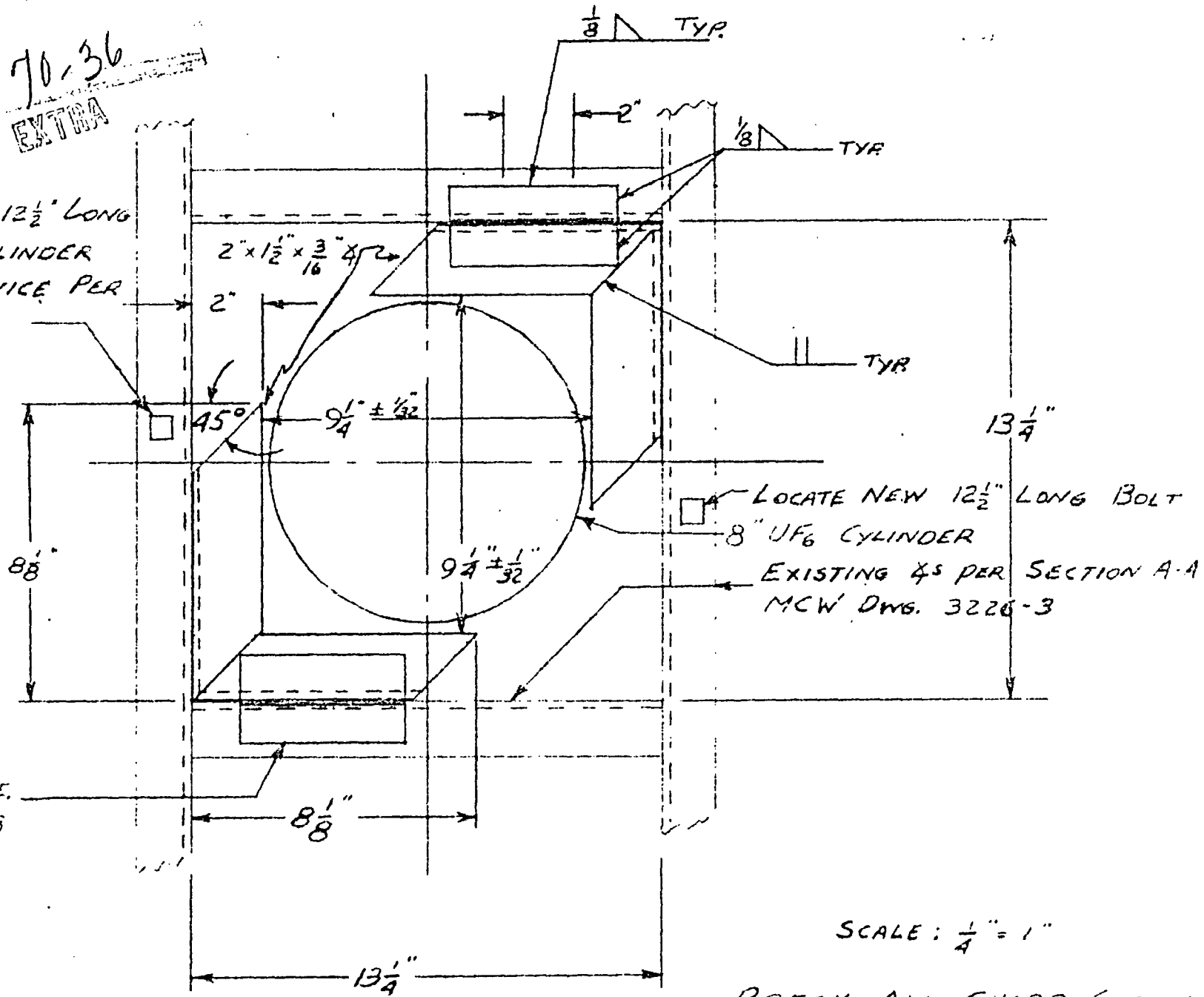
LJS/jrt

Enc. (3)

cc: AEC (7)

70-36  
EXTRA

MOUNT NEW 12½" LONG  
BOLT FOR CYLINDER  
SECURING DEVICE PER  
DWG 3226-3

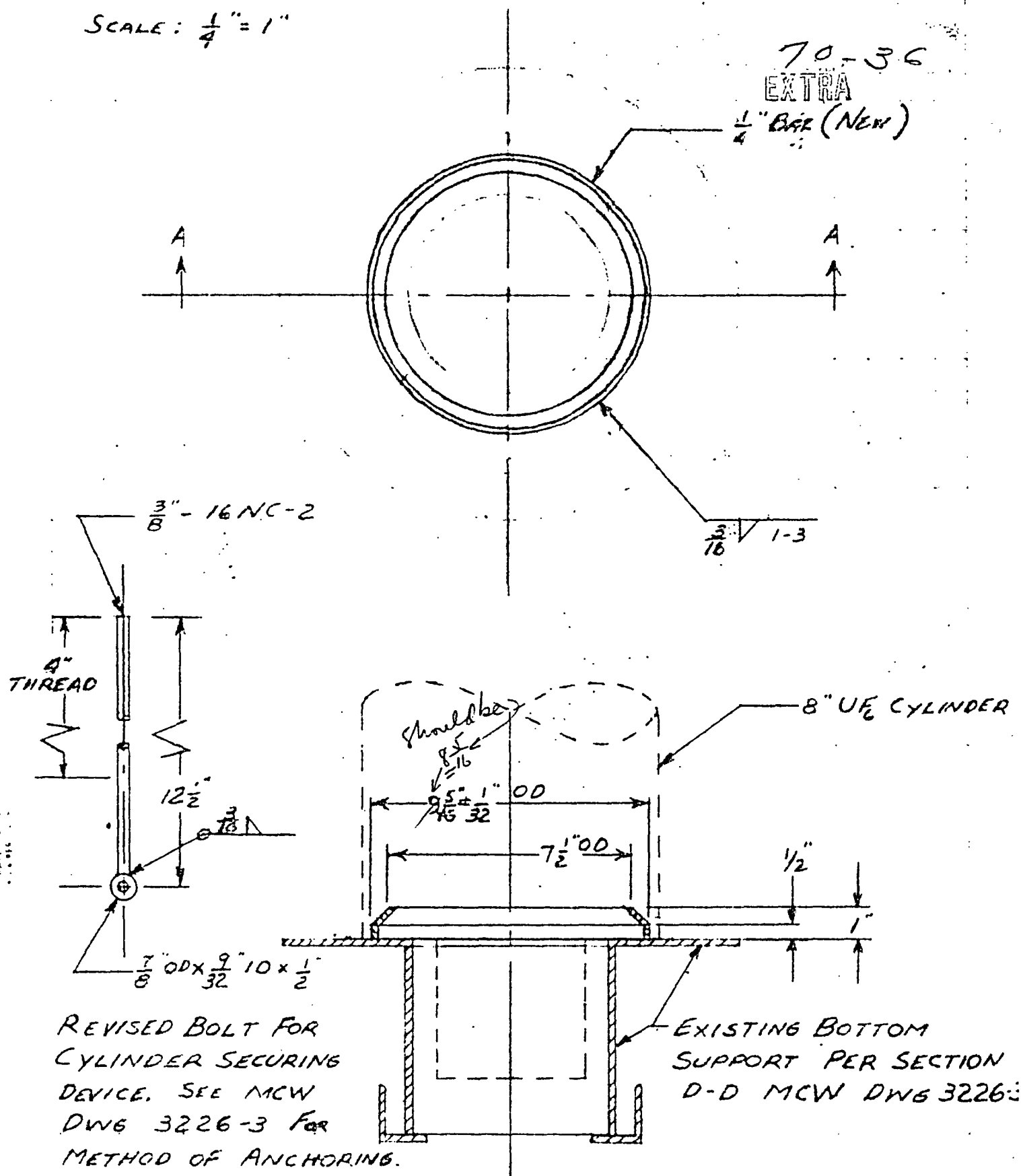


SCALE:  $\frac{1}{4}'' = 1''$

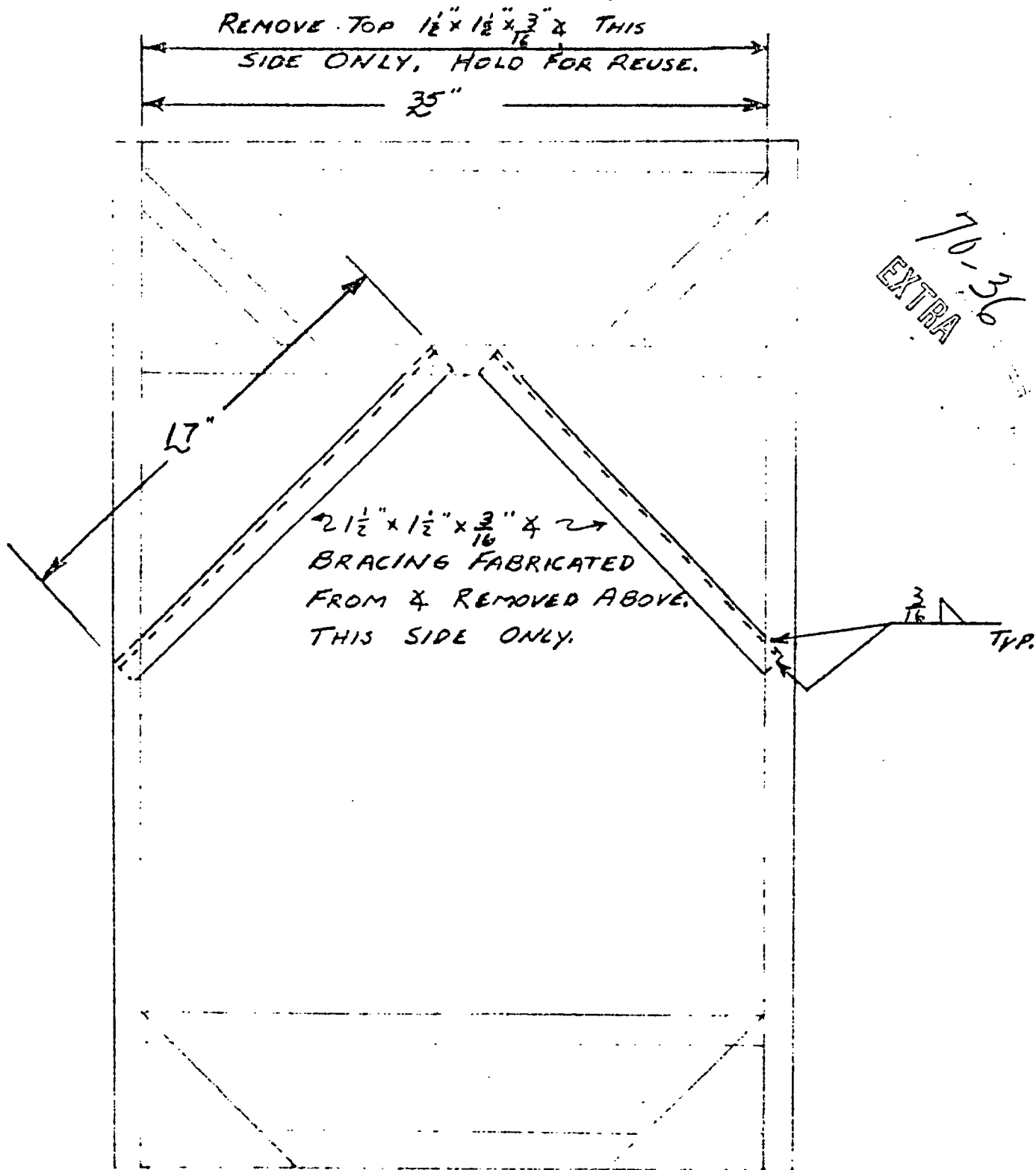
BREAK ALL SHARP CORNERS  
GRIND ROUGH EDGES.

SCALE:  $\frac{1}{4}" = 1"$

70-36  
 EXTRA  
 $\frac{1}{4}"$  Bore (New)



SECTION A-A



PARTIAL FRONT VIEW PER MCW

DRAWING 3226-3