



WHEELING JESUIT UNIVERSITY

Nuclear Medicine

May 24, 2005

J-6
MS-16

2005 MAY -3 PM 1:36

RECEIVED
REGION 1

U.S. NRC Region 1
Commercial & R&D Branch
Division of Nuclear Materials Safety
Mr. Thomas Thompson
465 Allendale Road
King of Prussia, PA 19406-1415

RE: Docket No. 03014938
Control No. 136544
License No. 47-14258-01

Dear Mr. Thompson:

In reference to above License, Docket and Control numbers, the following information is submitted:

1. There are no active Tc-99m generators. The only generators on site are spent generators used for demonstration purposes for the students.

Enclosed please find a detailed facility diagram indicating the Nuclear Medicine Laboratory. There are four fume hoods located adjacent to an outside wall. Each fume hood has a leaded "L" block. Each "L" block is ½" lead, 12" wide, 14" high.

All of sealed sources and reference sources are located in fume hood #1 which is locked at all times. The doors to the Nuclear Medicine Laboratory are locked at all times. The only personnel that have access to this room are approved faculty personnel from Wheeling Jesuit University.

There have been no radioactive sources received at this site. The sources currently on site, have been in the possession of Wheeling Jesuit University and are sealed sources used for instrument calibration and demonstration.

2. Enclosed please find a description of the radiation monitoring instruments that are available in the Nuclear Medicine Laboratory.
3. Radiation monitoring equipment will be calibrated in accordance with procedures outlined for Ohio Radioactive Materials License No. 03223480006 for Univeral Consultants, Inc. Attached is a sample copy of our calibration report.
4. Licensed material is inventoried semi-annually with the Radiation Safety Officer Ms. Angel Macci Bires reviewing and signing the resultant documents.

The entire Nuclear Medicine Laboratory is secured at all times, with the only personnel having access to these rooms are authorized staff personnel from Wheeling Jesuit University.

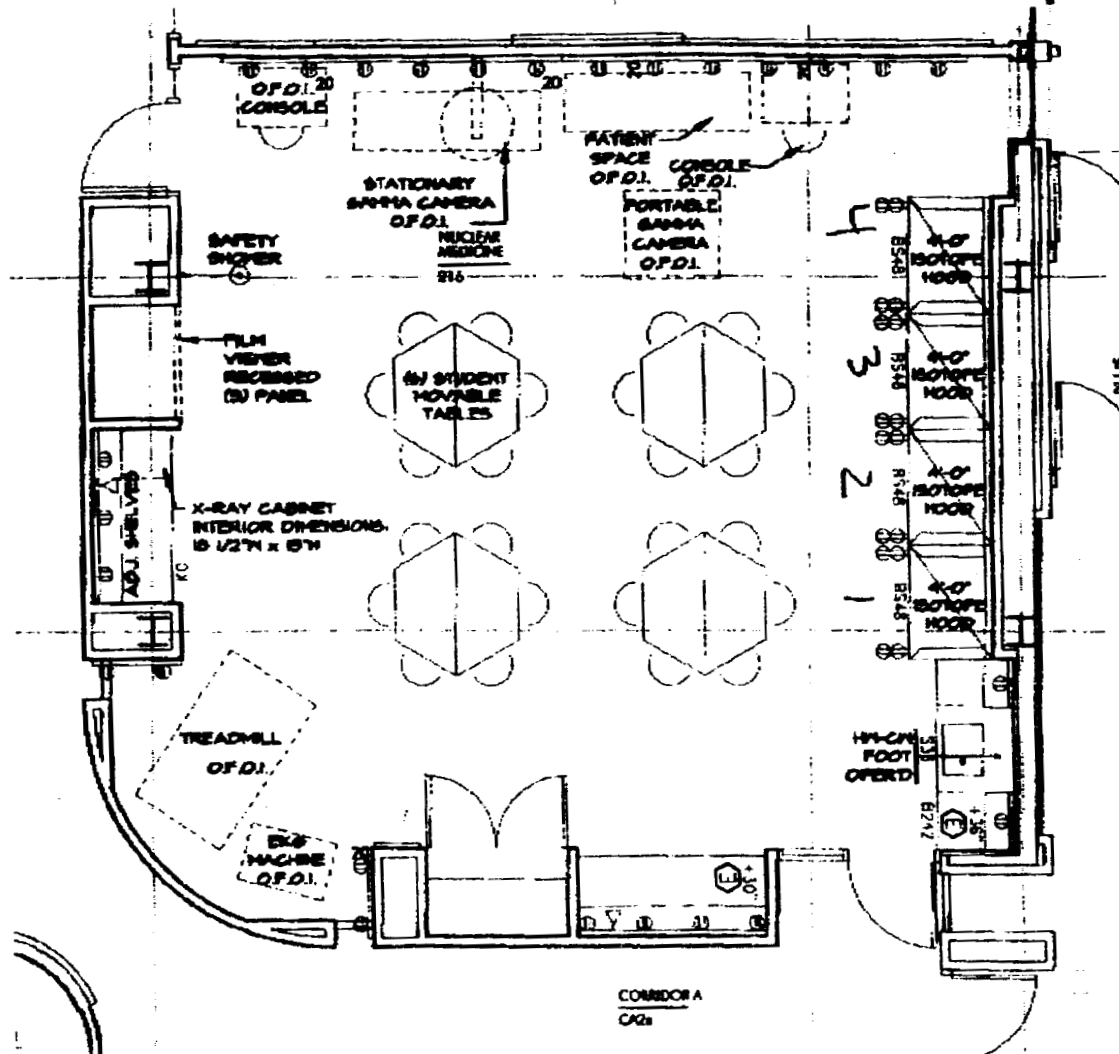
Should you require any additional information regarding the license renewal application, feel free to contact me.

Sincerely,

A handwritten signature in black ink, reading "Vincent A. Gargaro". The signature is written in a cursive, flowing style.

Vincent A. Gargaro, MS, MBA, Medical Physicist, CRE
Adjunct Faculty

Wheeling Jesuit University Science & Computer Building



2 LABORATORY EQUIPMENT - ROOM 216
1/8\"/>

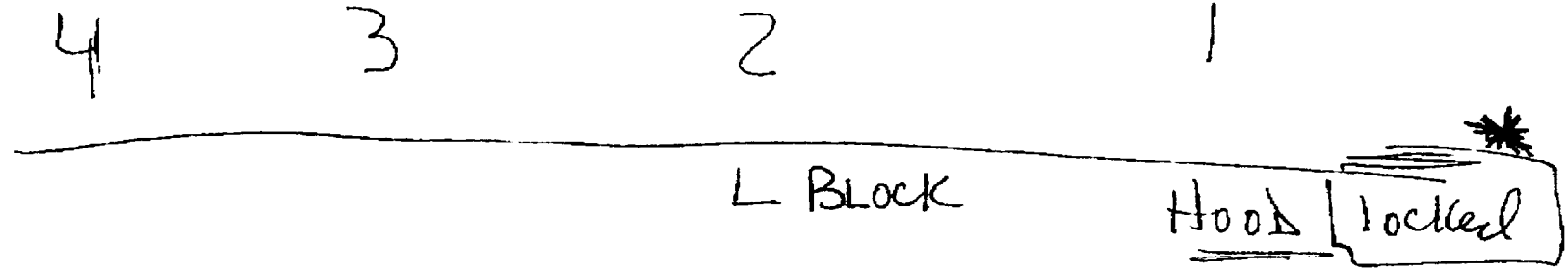
Only hood #1 locked
Storage of
Reference Samples

- isotope hoods secured.
All with locks and shielding.
- Outside doors are locked
and secured at all times

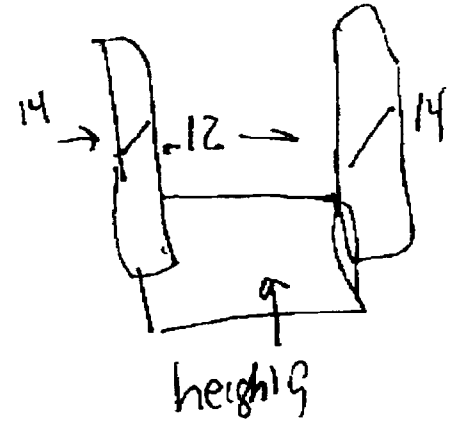
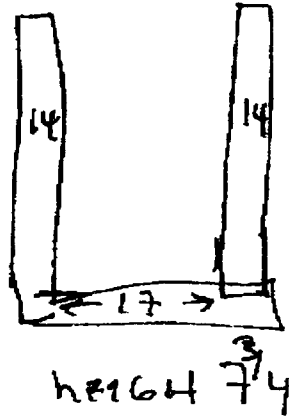
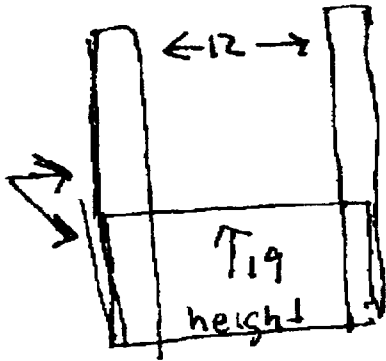


WHEELING JESUIT UNIVERSITY
127 MARKET STREET
WHEELING, PA 26061
TEL. 304-243-2600
FAX 304-243-2601





14



Wheeling Jesuit University

Wheeling Jesuit University

Well Counters

1. Picker Corporation
Serial # 254339
Module # 621940

2. Picker Corporation
Serial # 237179
Model 621940

3. Picker Corporation
Serial # 25896-5
Model 621940

4. Well Shield
ADC Medical
Model 330
No. 150579001

Survey Meters

1. GM
Ludlum Measurements, INC
Model 3
Meter Serial # 113252
Probe Model 44-7
Probe Serial 112713

2. GM
Meter Serial # 2241
Detector Serial # PWGM/HP-210T

3. Radiation Survey Meter (Demo for class)
Cutie Pie
Tracerlab, INC
Model SU1H
Serial # 1929

4. Radiation Survey Meter (Demo for class)
Cutie Pie
Technical Associates
Serial # 301

"L" Blocks

"L" Block- 13in X 21in.

Wheeling Jesuit University

Lead Bricks

1. L= 6.5in
W= 1.5in
H= 1.5in

14" x 12" x 8"

2. L= 6.5
W=1.5
H=3.0

SURVEY METER CALIBRATION REPORT

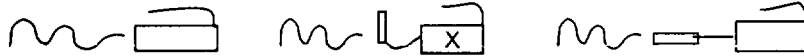
Facility:
Manufacturer:
Meter Model
Meter Serial

Department
Probe Model
Probe Serial

Instrument Checks:	Battery Check:	OK	mR/hr or _____
Constancy Check:	Integral check source indicates:	_____ mR/hr	
	_____ mCi of _____	indicates _____ mR/hr	

Ion Chamber	<input type="checkbox"/>
GM	<input checked="" type="checkbox"/>
Nal	<input type="checkbox"/>

CALIBRATION GEOMETRY



Window: Open ☐ Closed ☒ Fixed ☐

Calibration Date			
Scale Factor	Exp Rate	Filters	mR/hr/CF
x 1000	1400 @ 16.3 cm	None	1400
	350	0.25	350 / 1.0
x 100	140	.1	140
	35	.1 + .25	35 / 1.0
x 10	14	.1 + .1	14
	3.5	.1 + .1 + .25	3.5 / 1.0
x 1	1.4 @ 162.9 cm	.1	1.4
	.35	.1 + .25	.35 / 1.0
x 0.1	.14	.1 + .1	.14
	.035	.1 + .1 + .25	.035 / 1.0

This survey meter was calibrated to within +/-10% of the calculated value on each range indicated. Ranges not indicated were not calibrated. The calibration was performed by using an NIST traceable source of Cs-137 in a Tech Ops Model 773 calibrator of approximately 5.29 GBq (143 mCi) in accordance with procedures authorized by Ohio License #03225480006 for Universal Consultants, Inc. Maintain this record for inspection by regulatory agencies

Universal Consultants, Inc.
 35888 Center Ridge Road, Suite #7
 North Ridgeville, OH 44039
 PH: 440-327-9432

Vincent A. Gargaro, MS, MBA, Medical Physicist