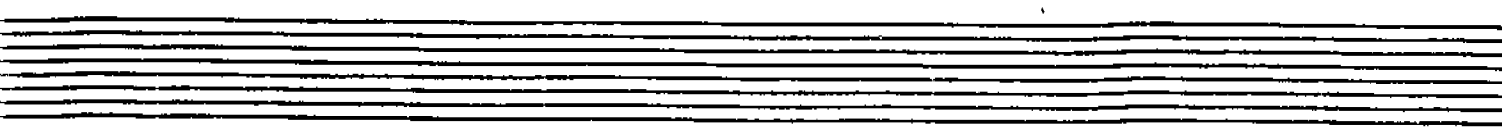


Browns Ferry Nuclear Plant Unit 2

**Probabilistic Safety Assessment
Individual Plant Examination**

REVISION 1 AUGUST 12, 1994



REVISION LOG

Title: PROBABILISTIC SAFETY ASSESSMENT - REPORT

REVISION 1

Revision No.	DESCRIPTION OF REVISION	Date Approved
0	Initial Issue	9/1/92
1	<p>Revised to incorporate the following items:</p> <ol style="list-style-type: none">1. Addresses comments identified prior to issue of Revision 0, but were not incorporated into Revision 0.2. Incorporates design changes physically made to the plant between December 1, 1991 and May 31, 1993.3. Updates the initiating event frequencies and diesel generator data using plant-specific data.	AUG 12 1994

PLDNE103/192/13

1. EXECUTIVE SUMMARY

1.1 BACKGROUND AND OBJECTIVES

This report documents the work performed by Tennessee Valley Authority (TVA) in accordance with the U.S. Nuclear Regulatory Commission (NRC) Generic Letter No. 88-20 (Reference 1-1), which requested each utility to perform an individual plant examination (IPE) "(1) to develop an appreciation of severe accident behavior, (2) to understand the most likely severe accident sequences that could occur at its plant, (3) to gain a more quantitative understanding of the overall probabilities of core damage and fission product releases, and (4) if necessary, to reduce the overall probabilities of core damage and fission product releases by modifying, where appropriate, hardware and procedures that would help prevent or mitigate severe accidents." To satisfy these requirements, a Level 1 and Level 2 probabilistic safety assessment (PSA) was performed for Unit 2 of the Browns Ferry Nuclear Plant. The PSA, Revision 0, was performed by an integrated team of engineers and PSA specialists from TVA and PLG, Inc., with support from ERIN Engineering, Inc., Gabor, Kenton and Associates, and EQE Engineering, Inc. The Revision 1 was performed by an integrated team of engineers and PSA specialists from TVA and PLG, Inc. The results are applicable to Unit 2 only.

TVA's original overall objectives of the Revision 0 PSA program were to

- Meet the NRC requirements for IPEs as set forth in Generic Letter No. 88-20 (Reference 1-1) and in NUREG-1335 (Reference 1-2).
- Develop a plant-specific Level 2 PSA model for Browns Ferry Unit 2 based on the plant design as of December 1991.
- Develop and apply databases for common cause failure parameters and human error rates. Generic databases were used for initiating event frequencies, component failure rates, and maintenance unavailabilities.
- Develop point estimate and uncertainty distribution results for the frequency of core damage and a full spectrum of radioactive release categories for Browns Ferry Unit 2.
- Determine the underlying risk controlling factors and key sources of uncertainty in developing the risk estimates.
- Identify and implement opportunities for safety enhancement.

TVA's overall objectives of the Revision 1 PSA were to:

- Address comments identified prior to issue of revision 0 but were not incorporated into revision 0.
- Incorporates design changes physically made to the plant between December 1, 1991, and May 31, 1993.

- Updates the initiating event frequencies and diesel generator data using plant-specific data.

The Level 2 evaluation was not revised as part of the Revision 1 PSA effort. The Revision 1 PSA provides a more realistic and representative CDF. The relative rankings of the accident sequences leading to core damage has changed, but at the same time the absolute plant risk has decreased since the probability of having an accident scenario leading to core damage has decreased by a factor of approximately 6. Therefore, from a Level 2 standpoint, the binning of the plant damage states may have changed showing a different distribution of accident scenarios. However, the overall risk of having a core damage scenario which may lead to a potential release from the containment has been reduced significantly. It is therefore concluded that the Level 2 analysis performed for the Revision 0 PSA is conservative with respect to the Revision 1 PSA Level 1 results.

The purpose of this summary is to present the results of the PSA on Browns Ferry Unit 2. These results include an estimate of the total core damage frequency (CDF); uncertainties in the estimated CDF; and the key plant damage states and release categories. This summary also provides the sequences, systems, and sources of uncertainty that are the significant contributors to the results. In addition, information is provided on the nature, timing, and magnitude of potential releases of radioactive material.

1.2 PLANT FAMILIARIZATION

The Browns Ferry Nuclear Plant is located on the north shore of Wheeler Lake at Tennessee River mile 294 in Limestone County, Alabama. The site is approximately 10 miles southwest of Athens, Alabama, and 10 miles northwest of Decatur, Alabama. The plant consists of three units, each with a rated power level of 3,293 MWt. Unit 2 is the only unit currently operating.

Unit 2 is a single-cycle forced-recirculation boiling water reactor (BWR) nuclear steam supply system supplied by General Electric Corporation. Major structures at Browns Ferry Unit 2 include a reactor building with three Mark I drywell containments, a turbine building, a control bay, and an intake pumping station.

A detailed description of the plant site, facilities, and safety criteria is documented in the Browns Ferry Final Safety Analysis Report (Reference 1-3).

1.3 OVERALL METHODOLOGY

The Browns Ferry Unit 2 PSA is founded on a scenario-based definition of risk (Reference 1-4). In this application, "risk" is defined as the answers to three basic questions:

1. What can go wrong?
2. What is the likelihood?
3. What are the consequences?

Question 1 is answered with a structured set of scenarios that is systematically developed to account for design and operating features specific to Browns Ferry Unit 2. Question 2 is answered with a prediction or estimate of the frequency of occurrence of each scenario

identified in the answer to question 1: Since there is uncertainty in that frequency, the full picture of likelihood is conveyed by a probability curve—a curve that conveys the state of knowledge, or confidence, about that frequency.

Question 3 is answered in a Level 2 PSA in terms of the key characteristics of radioactive material releases that could result from the scenarios identified. The results reported here are based on the methods that conform to the NRC guidelines (Reference 1-1, Appendix 1) and the IEEE/ANS "PSA Procedures Guide" (Reference 1-5).

A large fraction of the effort needed to complete this PSA was to develop a plant-specific model to define a set of accident sequences. This model contains a large number of scenarios that have been systematically developed from the point of initiation to termination. A series of event trees is used to systematically identify the scenarios. Given the knowledge of the event tree structures, accident sequences are identified by specifying:

1. The initiating event.
2. The plant response in terms of combinations of systems and operator responses.
3. The end state of the accident sequence.

The RISKMAN® PC-based software system (Reference 1-6) was used to construct effectively a single, large tree for Level 1 and a second tree for Level 2. The sequences in the Level 1 analysis start with an initiating event and terminate in plant damage states. Plant damage states are the starting points for the Level 2 event trees. Level 2 event trees are quantified separate from the Level 1 trees. Release categories are used as the end states of the Level 2 event trees.

The initiating events and the event tree branching frequencies are quantified using different types of models and data. The system failures that contribute to these events are analyzed with the use of fault trees that relate the initiating events and event tree branching frequencies to their underlying causes. These causes are quantified, in turn, by application of models and data on the respective unavailabilities due to hardware failure, common cause failure, human error, and test and maintenance unavailabilities. The frequencies of initiating events, the hardware failure rates of the components, and operator errors were obtained using either generic data or a combination of generic and plant-specific data.

Dependency matrices are developed from a detailed examination of the plant systems to account for important interdependencies and interactions that are highly plant specific. To facilitate a clear definition of plant conditions in the scenarios, separate stages of event trees are provided for the response of the support systems (e.g., electric power and cooling water), the frontline systems [e.g., high pressure coolant injection (HPCI) and residual heat removal (RHR)], and the containment phenomena; e.g., containment overpressurization failure. The containment event tree is used in the Level 2 PSA. A detailed definition of plant damage states provides the interface between the Level 1 and Level 2 event trees.

The systematic, structured approach that is followed in constructing the accident scenario model provides assurance that plant-specific features are identified. It also provides insights into the key risk controlling factors.

1.4 SUMMARY OF MAJOR FINDINGS

The major findings of the Browns Ferry Unit 2 Level 2 PSA are presented in this section. The results delineate the principal contributors to risk, and provide insights into plant and operational features relevant to safety.

The Revision 0 PSA included both the Level 1 and Level 2 results. However, for the Revision 1 PSA, only the Level 1 portion of the plant model was evaluated and revised. The Level 2 portion of the plant model was not revised.

1.4.1 TOTAL CORE DAMAGE FREQUENCY

The total CDF for Browns Ferry Unit 2 was found to be 7.7×10^{-6} per reactor-year.* For this analysis, core damage is assumed for any sequence in which sustained core uncover occurs. The results for CDF were developed in terms of a mean point estimate, as required in NUREG-1335 (Reference 1-2). Presentation of the total CDF is in terms of the uncertainty distribution shown in Figure 1-1.

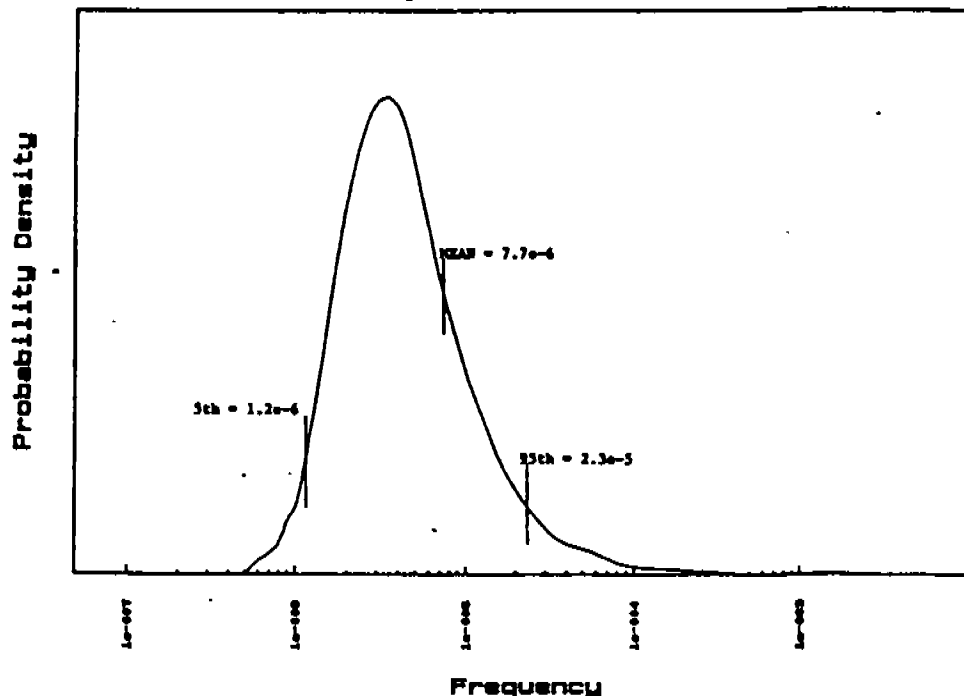


Figure 1-1. Uncertainty Distribution for Browns Ferry Unit 2 Core Damage Frequency

A comparison of this study with other PSAs on other plants that used similar methods, databases, and work scopes is given in the following table. The calculated mean CDF for Browns Ferry Unit 2 is of the same order of magnitude as Peach Bottom Unit 2 and Grand Gulf Unit 1, and an order of magnitude lower than that reported for Shoreham and Nine Mile Point Unit 2.

*The unit for the core damage frequency is events per nuclear-powered electric generating unit per calendar year. This definition is abbreviated to "per reactor-year."

Plant	Flood Included	Mean CDF (per reactor-year)	Reference
Shoreham	Yes	5.5×10^{-5}	1-7
Nine Mile Point Unit 2	Yes	3.0×10^{-5}	1-8
Browns Ferry Unit 2	Yes	7.7×10^{-6}	This Study
Peach Bottom Unit 2	No	4.5×10^{-6}	1-9
Grand Gulf Unit 1	No	4.0×10^{-6}	1-10

Factors that contribute to the results for Browns Ferry Unit 2 are summarized below:

- The accident sequences that were analyzed are those initiated by internal events and internal floods, in accordance with IPE requirements. Sequences initiated by internal fires, seismic events, and other external events have not been considered.
- The current results do not reflect any future plant or procedural changes that TVA may decide to make to improve safety.
- The Revision 0 results were obtained using industry data for failure rates, generic data for maintenance unavailabilities, and initiating event frequencies (Reference 1-11). The Revision 1 effort included using plant specific data to update failure rates for selected components and initiating events frequencies. The common cause parameters of the multiple Greek letter model were used in this study and were estimated with the benefit of a plant-specific screening of industry common cause event data in accordance with NUREG/CR-4780 (Reference 1-12).
- Operator actions to recover from adverse plant states were considered up to the point of core damage; however, further accident management actions that would be expected after the onset of core damage were not considered. It is important to note that in this study, operator actions considered to prevent core damage were limited.
- Scenarios initiated by internal floods at Browns Ferry Unit 2 contribute approximately 17% to the total CDF.

1.4.2 CONTRIBUTORS TO TOTAL CORE DAMAGE FREQUENCY

In the quantification of the Level 1 event sequence models, the principal contributors to the CDF were identified from several vantage points. The results and contributors are summarized in this section. Section 3.4 describes the results in detail, along with the accident sequence screening process. Causes for individual system failures are listed in each systems analysis notebook.

1.4.2.1 Important Core Damage Sequence Groups

The importance of initiating events was examined by determining the contributions of core damage sequences grouped by initiating event. The ranked results are shown in Figure 1-2 and Table 1-1 for major initiating event categories.

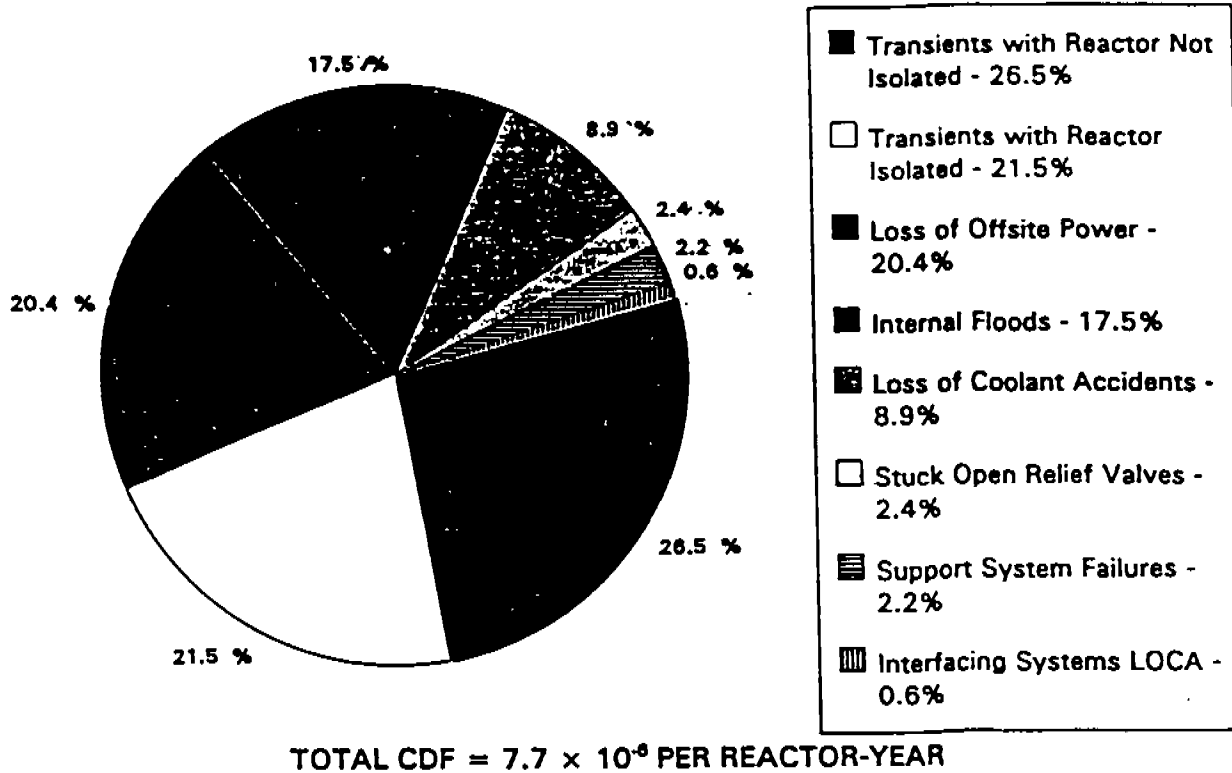


Figure 1-2. Browns Ferry Unit 2 Core Damage Frequency by Initiating Event Category

Table 1-1. Initiating Event Group Contributions to Core Damage Frequency		
Initiating Event Category	Mean CDF (per reactor-year)	Percentage of Total
Transients with Reactor Not Isolated	2.04×10^{-6}	26.5
Transients with Reactor Isolated	1.65×10^{-6}	21.5
Loss of Offsite Power	1.57×10^{-6}	20.4
Internal Floods	1.34×10^{-6}	17.5
Loss of Coolant Accidents	6.82×10^{-7}	8.9
Stuck-Open Relief Valves	1.88×10^{-7}	2.4
Support System Failures	1.72×10^{-7}	2.2
Interfacing System LOCAs	4.63×10^{-8}	0.6
Total	7.7×10^{-6}	100

The highest single initiating event is a loss of offsite power (LOSP). Table 1-1 does not reveal this since it presents some categories of multiple initiation. The LOSP initiators include station blackout sequences (failure of all diesel generators) and nonstation blackout scenarios in which core damage resulted from other failures. These other failures include battery board failures (resulting in loss of high pressure injection and failure to achieve low pressure injection) and decay heat removal failures. Overall, the LOSP initiated sequences account for 20.4% of CDF.

Transients with the reactor not isolated contribute 26.5% to the core damage frequency. Turbine trip and loss of feedwater are two specific examples of initiators in this group.

Transients with the reactor isolated as a result of the initiator contribute 21.5% to the core damage frequency. Closure of the main steam isolation valves (MSIV) and turbine trip without bypass are two specific examples of initiators in this group.

Scenarios initiated by internal floods contribute 17.5% to the core damage frequency. No internal flooding scenarios lead directly to core damage but require additional hardware failures. Flooding initiators were postulated in the Unit 2 reactor building, in the Unit 1 or Unit 3 reactor building, in the turbine building, and at the intake pumping station.

Large and medium LOCAs and interfacing systems LOCAs (i.e., when the boundary between a high and a low pressure system fails and the lower pressure system overpressurizes) make up 9.5% of the total CDF.

Scenarios initiated by the inadvertent opening of one or more relief valves contribute 2.4% to the core damage frequency. Three distinct initiators are considered: opening of one safety relief valve (SRV), opening of two SRVs, and opening of three or more SRVs.

Support system failure initiators (specifically, loss of plant air, loss of raw cooling water, loss of unit preferred power, loss of either I&C bus 2A or 2B, or instrument tap failures) also contribute 2.2% to the total CDF.

The preceding paragraphs considered the contribution to the total CDF from groups of initiating events. The sequences leading to core damage were also reviewed to identify common functional failures. Approximately 86% of the total CDF is associated with the three accident sequence groups shown in Table 1-2.

Table 1-2. Functional Failure Group Contributions to Core Damage Frequency		
Accident Sequence Group	Mean CDF (per reactor-year)	Percentage of Total
Transient with Vessel at High Pressure	2.6×10^{-6}	33%
Transient Followed by Loss of Vital DC Power (250V boards 2 and 3)	2.5×10^{-6}	32%
Anticipated Transient without Scram (ATWS)	1.6×10^{-6}	21%

Events in which the reactor remains at high pressure contribute 33% to the total CDF. These scenarios are distributed among the transient initiators and are dominated by the reactor not being depressurized to allow low pressure makeup on loss of HPCI, RCIC and control rod drive (CRD). The Level 1 evaluation that resulted in identifying the sequences contributing 33% to the CDF was based on a conservative depressurization criterion (vessel depressurization prior to vessel level reaching -190 inches). As described in Section 4, the Level 2 analysis considered additional credit for late depressurization.

Sequences in which 250V DC battery boards 2 and 3 both fail make up 32% of the total CDF. These sequences require depressurization of the reactor vessel and use of the low pressure injection systems, to prevent core damage; however, failure of 250V DC battery boards 2 and 3 impact the availability of low vessel pressure permissive signals for low pressure coolant injection (LPCI) and core spray.

Sequences without a reactor scram (ATWS) contribute approximately 21% to the total CDF. Such sequences may lead to core damage if alternate means of controlling reactivity (for example, boron injection) fail.

Table 1-3 summarizes the contribution of the top sequence to the CDF at Browns Ferry Unit 2. This sequence accounts for 3.6% of the CDF. Other sequences involving loss of high pressure injection are similar.

Table 1-3. Analysis of the Top Sequence		
Sequence Element	Element Description	Mean Frequency (per reactor-year)
Initiating Event	Flood in the Turbine Building	3.36×10^{-2}
Additional Equipment or Operator Failures after Initiating Event	Failure of 250V DC Battery Boards 2 & 3	2.53×10^{-5}
Recovery Actions	Board Failure not Recoverable or Attempts with Alternate Charger Fail	5.30×10^{-1}
Consequential Effects of Above Failures on Plant Performance	High Pressure Injection Unavailable. Low Vessel Pressure Permissive Signals Unavailable Causing Failure of LPCI and Core Spray	1.0
Remaining Plant Response	Successful operation of remaining systems and actions.	6.08×10^{-1}
Total Sequence Frequency (product of contributors)		2.74×10^{-7}

1.4.2.2 Analysis of Individual Sequences

No single core damage sequence was found to dominate the total frequency of core damage. A large number of sequences make up the total CDF. Table 1-4 provides information on the distribution of core damage sequences across the frequency range.

Table 1-4. Breakdown of Core Damage Sequences in Each Frequency Range

Frequency Range (events per year)	Number of Sequences	Percentage of CDF
10^{-7} to 10^{-6}	6	13.5
10^{-8} to 10^{-7}	111	34.5
10^{-9} to 10^{-8}	1,090	37.8
$< 10^{-9}$	3,917	14.2

The following presents a brief description of the 10 highest ranking sequences to the CDF. Six of the top ten sequences involve failures of Battery Boards 2 & 3. Two sequences involve failure of the Reactor Protection System resulting in an ATWS. The remaining sequences are a loss of offsite power which progresses to a station blackout and a flood in which high pressure injection failed and the vessel was not depressurized.

- Turbine Building Flood with failure of Battery Boards 2 and 3 and no recovery using the spare charger (3.6% CDF)
- Closure of all MSIVs with failure of Battery Boards 2 and 3 and no recovery using the spare charger (3.0% CDF)
- Total Loss of feedwater with failure of Battery Boards 2 and 3 and no recovery using the spare charger (1.9% CDF)
- Loss of Condenser Vacuum with failure of Battery Boards 2 and 3 and no recovery using the spare charger (1.8% CDF)
- Turbine Building Flood with HPCI and RCIC unavailable and the vessel remains at high pressure (1.6% CDF).
- Turbine Trip without Bypass with failure of Battery Boards 2 and 3 and no recovery using the spare charger (1.6% CDF).
- A Loss of offsite power in which emergency diesel generators were successful but with failure of Battery Boards 2 and 3 and no recovery using the spare charger (1.1% CDF).
- Turbine Trip with failure to scram (ATWS) and failure of the standby liquid control system (1.1% CDF).
- A Loss of offsite power with failure of the station diesel generators (four Unit 1/2 diesel generators and four Unit 3 diesel generators with no power recovery in six hours (1.0% CDF).

- Turbine Trip with failure to scram (ATWS) and failure to initiate the standby liquid control system (1.0% CDF).

Section 3.4 contains a detailed discussion of the top 10 sequences as well as a listing of the top 100 core damage sequences.

1.4.2.3 Important Operator Actions

The importance of a specific operator action was determined by summing the frequencies of the sequences involving failure of that action and comparing that sum to the total CDF. The importance is the ratio of that sum to the total CDF. The importance analysis that was performed for Browns Ferry Unit 2 is discussed more fully in Section 3.4.

Table 1-5 summarizes the important operator action failures ranked in order of their impact on the total CDF. The operator actions to recover electric power are not included in Table 1-5 because they are a complex function of the time available and the specific equipment failures involved.

Table 1-5. Browns Ferry Unit 2 Important Operator Actions		
	Operator Action	Importance
1.	Manual Depressurization of the Reactor Vessel using the Safety Relief Valves	.060
2.	Initiate Standby Liquid Control System, Given an ATWS with an Unisolated Vessel	.034
3.	Align RHR for Suppression Pool Cooling	.027
4.	Initiate Standby Liquid Control System, Given an ATWS with Vessel Isolated	.019
5.	Align Alternate Injection to Reactor Vessel Via the Unit 1 to Unit 2 RHR Crosstie	.015
6.	Control Reactor Vessel Level at Low Pressure Using RHR or Core Spray	.011
7.	Align and Start a RHRSW Swing Pump After a LOSP With Degraded EECW	.008
8.	Inhibit Automatic Depressurization During an ATWS	.007
9.	Start RHR or Core Spray Pumps, Given High Pressure Injection (HPCI, RCIC) Has Failed	.007
10.	Transfer Unit 1 and Unit 2 4-kV Unit Boards to 161-kV Power Given Loss of 500-kV Power	.003

1.4.2.4 Important Plant Hardware Characteristics

An importance analysis of plant system failure modes to the total CDF was also performed. Only hardware failures involving the system itself are considered in Table 1-6, which provides a ranking in order of their impact on the total CDF.

Table 1-6. Browns Ferry Unit 2 Important Systems	
System	% CDF
250V Battery Boards	49
Residual Heat Removal System	22
Reactor Protection System	20
Diesel Generators	16
Residual Heat Removal Service Water System	9
High Pressure Coolant Injection System	8
Main Steam System including Turbine Trip	7
Shared Actuation Instrumentation	7
Reactor Core Isolation Cooling System	6
Control Rod Drive Hydraulic System	4
Standby Liquid Control System	4
Condensate and Feedwater System	1

The system importance means the fraction of the CDF involving partial or complete failure of the indicated system. These importance measures are not strictly additive because multiple system failures may occur in the same sequence. The importance rankings account for failures within the systems that lead to a plant trip, or failures that limit the capability of the plant to mitigate the cause of a plant trip. Consequential failures resulting from dependencies on other plant systems [e.g., the loss of drywell control air due to failure of reactor building closed cooling water (RBCCW)] are not included in this importance ranking.

A further discussion of system importance and the results of additional sensitivity analysis are provided in Section 3.4.

Note: The following sections (1.4.2.5, 1.4.3, 1.4.3.1, 1.4.3.2) were not updated since the Level 2 analysis was not revised as part of the Revision 1 PSA effort.

1.4.2.5 Plant Damage States

One output from the Level 1 event sequence model is a description of the plant damage state (PDS) at the time of core damage. This plant damage state strongly influences the performance of the containment and the magnitude of fission product release that is assessed in the Level 2 analysis, as described in Section 4.

Table 1-7 provides the frequencies of different plant damage states associated with core damage. The results in Table 1-7 only account for the impact on containment integrity of the accident sequence up to the time of core damage. In the context of the PSA, the terms "early failure" and "late failure" refer to specific transient characteristics. For an "early failure" to occur, the transient must involve phenomena that could cause the drywell

pressure to rise rapidly and exceed the ultimate containment pressure. An unmitigated ATWS is an example of this type of transient. "Late failures" are those in which reactor vessel injection is accomplished but the containment heat removal is not accomplished. The result is a slow rise in containment pressure to the failure point before core damage occurs. As examples, the Level 1 analysis considers failures to isolate containment penetrations, containment bypass from line breaks outside containment, and preexisting leaks. Table 1-7 results do not account for challenges to containment from severe accident phenomena such as hydrogen burns and concrete degradation, which are analyzed in Level 2.

As shown in Table 1-7, over 95% of the core damage events would be associated with an intact containment, and 1.8%, 0.8%, and 0.4% would be associated with late containment failure, early containment failure, and containment bypass, respectively. Core damage sequences accompanied by a containment bypass lead to a greater fission product release.

Table 1-7. Core Damage Frequency Breakdown for Browns Ferry Unit 2 by Major PDS Group

Containment State	Frequency (per reactor-year)	CDF (percent)
Intact	4.6×10^{-5}	97.0
Late Failure	8.7×10^{-7}	1.8
Early Failure	4.0×10^{-7}	0.8
Bypass	2.0×10^{-7}	0.4
Total	4.8×10^{-5}	100.0

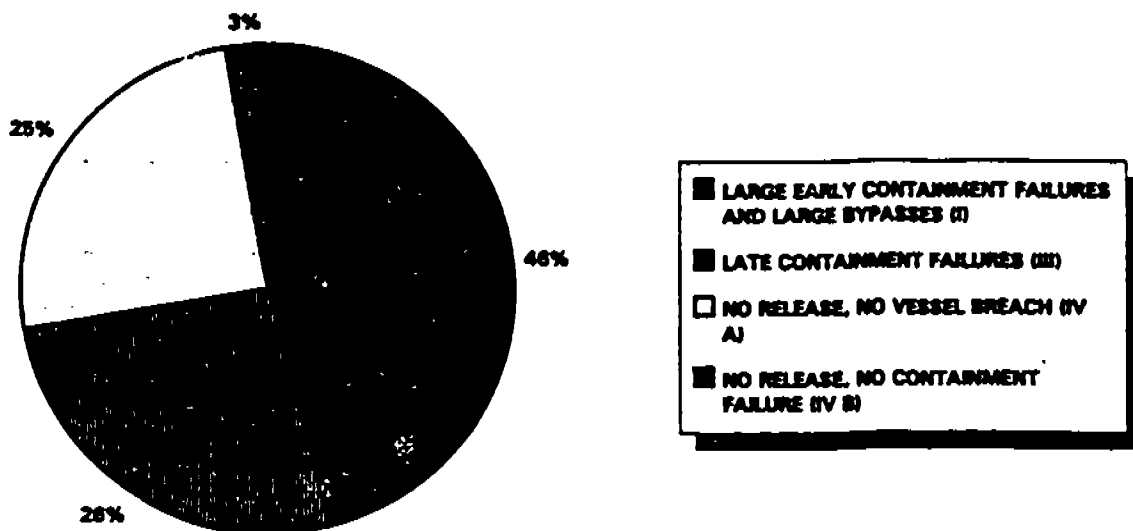
1.4.3 RESULTS FOR RELEASE FREQUENCY

This section summarizes the results for the Level 2 analysis which established the release category groups and estimated the frequency of the release categories. Sequences quantified by the Level 1 analysis (representing the sequences leading to core damage), are further processed through the containment event tree (CET). The CET top events represent the systemic and phenomenological events in the accident progression from core uncover to possible containment failure and release to the environment. The results of the CET quantification process are summarized in Table 1-8. The same results are also displayed in Figure 1-3.

Table 1-8. Summary of Release Frequency Results by Release Category Groups

Release Category Groups	Description	Percentage of CDF
I	Large, Early Containment Failures and Large Bypasses	46
II	Small, Early Containment Failures and Small Bypasses	0

Table 1-8. Summary of Release Frequency Results by Release Category Groups		
Release Category Groups	Description	Percentage of CDF
III	Late Containment Failures	26
IV A	No Release, Vessel Breach Prevented, In-Vessel Recovery	25
IV B	No Release, Containment Intact Following Vessel Breach	3

KEY RELEASE CATEGORY GROUPS**Figure 1-3. Key Release Category Groups as a Percentage of Total CDF**

These results indicate that about 46% of the core damage scenarios result in a large early release. A similar number for Peach Bottom is 55%. This indicates that the Browns Ferry containment performance to severe accident challenges is comparable to that of Peach Bottom.

1.4.3.1 Contributors to Release Frequency

The release category groups are discussed as follows:

- Release Category Group I (large, early containment failures and large bypasses) is the highest frequency release category group, accounting for 46% of the total core damage frequency. This release category group represents the most severe source term scenario. Here the containment failures are dominated by drywell shell failures (due to thermal interactions with the molten core debris on the drywell floor) following vessel breach. Figure 1-4 classifies the release Group I into three

subgroups: (1) early, large drywell shell failures, (2) early, large structural failures, and (3) early, large bypasses. It can be seen from the Figure 1-4 that drywell shell failures contribute to about 96% of the Release Category Group I frequency. Structural failures and bypass each contribute 2% to the Release Category Group I frequency.

- Release Category Group II (small, early containment failures and small bypasses) does not account for any of the CDF sequences. This is a result of the Browns Ferry Unit 2 containment failure modes analysis which showed that dominant failure modes were large failures. Small failures resulted in insignificant contribution to this release category.
- Release Category Group III (late containment failures) accounts for 26% of the CDF sequences. These sequences result in late releases due to containment structural failure that occur with more than 4 hours delay from the time of vessel breach. The containment failure occurs as a result of the drywell shell being challenged by the slow temperature and pressure rise following vessel breach and release of core debris onto the drywell floor.
- Release Category Group IV A accounts for 25% of the CDF and represents sequences which are recovered in-vessel with no vessel breach and with minimal or no releases. Operators have longer time available in these scenarios to take corrective actions and successfully terminate the sequences.
- Release Category Group IV B accounts for 3% of the CDF and represents sequences which lead to vessel breach. However, an insignificant release occurs because containment integrity is maintained.

CONTRIBUTORS TO RELEASE CATEGORY GROUP I

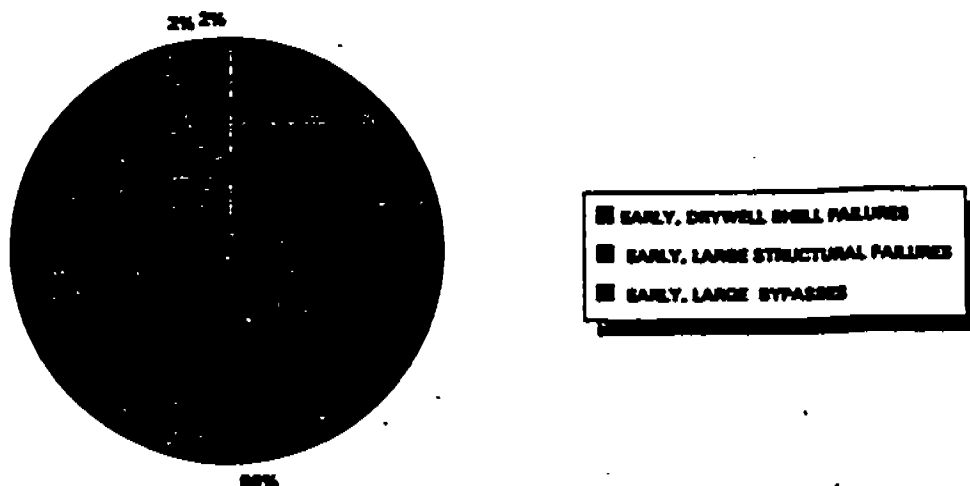


Figure 1-4. Contributors to Release Category Group I

1.4.3.2 Important Plant Hardware Characteristics for Containment Performance

As discussed in the previous Section 1.4.3.1, the dominant contributor to the most significant release category group (large, early containment failure and large bypasses) is drywell shell thermal attack from corium on the drywell floor. This is representative for most Mark I containments. The likelihood of drywell shell thermal attack failure is significantly reduced if the drywell floor is flooded with water prior to vessel breach. A sensitivity analysis addressed the availability and effectiveness of providing water from the diesel-driven firewater pump to the drywell spray header for the station blackout scenario. The addition of water to the drywell floor using the firewater pump prior to vessel failure resulted in reducing the large, early containment failure release category from 46% in the base case to 14% in the sensitivity analysis. Drywell spray represents an important hardware component since it is the primary means of flooding the drywell.

1.4.4 COMPARISON WITH THE 1992 BROWNS FERRY UNIT 2 PRA, REVISION 0

In 1992, TVA completed a PRA on Browns Ferry Unit 2 in response to Generic Letter 88-20. The changes made in Revision 1 which had the largest effect on core damage frequency fall into three classes:

Loss of Offsite Power (LOSP) Initiators - which comprised almost 70% of the Revision 0 CDF, includes several important modifications which reduced the LOSP contribution. The failure rates for diesel generators were decreased through the use of plant specific data. This change increased the fraction of time following a LOSP that power was available to equipment. Another significant change involved the Unit 3 diesel generators. Where the Revision 0 model assumed that all Unit 3 diesel generators would fail given the failure of all Unit 1/2 diesel generators, this is no longer the case in Revision 1. Although the Unit 3 diesel generators as a group are still questioned under these circumstances, the model now assumes they fail only about a fourth of the time. The revision 1 model also allows for powering the Unit 2 4kV shutdown boards through the emergency feeder breakers to the appropriate 4kV board on Unit 3. The last significant change in Revision 1 with respect to LOSP involves the use of a different curve to describe the probability of recovering offsite power in time to prevent uncovering the core. This curve, based on NRC-sponsored report NUREG/CR-5032 (Reference 1-14), more closely models the switchyard configuration at BFN and results in a higher probability of recovering power in time to prevent core damage.

Sequences Involving Loss of Battery Boards 2 and 3 - the second class involves the failure of 250 Battery Boards 2 and 3. The failure of these boards accounted for 11% of the Revision 0 CDF. Revision 1 models operator actions to recover one of the boards by aligning charger 2B. Although the relative contribution of these boards is higher in Revision 1, the absolute contribution is decreased from Revision 0.

Sequences Involving a Failure to Depressurize - the third and last class involves the failure to depressurize. The most important operator action in Revision 0 involved a failure to depressurize the reactor vessel using the safety relief valves. As discussed in Appendix B, the probability distribution used to describe this action was updated using simulator experience. The resulting distribution indicates a much lower probability of the operators failing to depressurize.

1.5 REFERENCES

- 1-1. U.S. Nuclear Regulatory Commission, "Individual Plant Examination for Severe Accident Vulnerabilities," 10CFR50.54(5), Generic Letter No. 88-20, November 23, 1988.
- 1-2. U.S. Nuclear Regulatory Commission, "Individual Plant Examination: Submittal Guidance," NUREG-1335, August 1989.
- 1-3. Tennessee Valley Authority, "Browns Ferry Nuclear Plant Final Safety Analysis Report," Amendment 9.
- 1-4. Kaplan, S., and Garrick, B. J., "On the Quantitative Definition of Risk," *Risk Analysis*, Vol. 1, pp. 11-37, March 1981.
- 1-5. American Nuclear Society and Institute of Electrical and Electronics Engineers, "PRA Procedures Guide; A Guide to the Performance of Probabilistic Risk Assessments for Nuclear Power Plants," sponsored by U.S. Nuclear Regulatory Commission and Electric Power Research Institute, NUREG/CR-2300, April 1983.
- 1-6. PLG, Inc., "RISKMAN — PRA Workstation Software," Users Manuals I-IV, Version 5.11, 1994.
- 1-7. Electric Power Research Institute, Nuclear Safety Analysis Center, "EPRI PRA Repository," NSAC 152, Vol. 5, Shoreham Unit 1, October 1991.
- 1-8. Niagara Mohawk Power Corporation. "Plant Nine Mile Point Unit 2 IPE," July 1992.
- 1-9. U.S. Nuclear Regulatory Commission, "Analysis of Core Damage Frequency: Peach Bottom, Unit 2," NUREG/CR-4550, Vol. 4, Rev. 1, Parts 1 and 2, August 1989.
- 1-10. U.S. Nuclear Regulatory Commission, "Analysis of Core Damage Frequency: Grand Gulf, Unit 1," NUREG/CR-4550, Vol. 6, Rev. 1, Parts 1 and 2, September 1989.
- 1-11. PLG, Inc., "Database for Probabilistic Risk Assessment of Light Water Reactor Power Plants," Vols. 1-9, PLG-0500, Proprietary, August 1989.
- 1-12. Mosleh, A., et al., "Procedures for Treating Common Cause Failures in Safety and Reliability Studies," Pickard, Lowe and Garrick, Inc., prepared for U.S. Nuclear Regulatory Commission and Electric Power Research Institute, NUREG/CR-4780, EPRI NP-5613, PLG-0547, Vols. 1-2, January 1988.
- 1-13. Tennessee Valley Authority, "Browns Ferry Unit 1 Probabilistic Risk Assessment," September 1987.
- 1-14. U.S. Nuclear Regulatory Commission, "Modeling Time to Recovery and Initiating Event Frequency for Loss of Off-Site Power Incidents at Nuclear Power Plants," NUREG/CR-5032, January 1988.