



# State of Connecticut

## Department of Economic and Community Development

### Programs & Services

[Expand/Moving a Business](#)  
[Help Starting a Business](#)  
[Brownfields Programs](#)  
[Technology Directory](#)  
[CT Film, Video, Media](#)  
[Housing Authorities](#)  
[CDBG \(Small Cities\)](#)  
[Set-Aside Program](#)  
[Enterprise Zones](#)  
[HOME Program](#)  
[ConneCT Kids](#)

### Agency Departments

[Industry Clusters](#)  
[Regional Offices](#)  
[Human Resources](#)  
[Infrastructure](#)  
[International](#)  
[Research](#)  
[Housing](#)  
[Tourism](#)

### DECD Publications

[2001 Action Plan \(.doc\)](#)  
[Inner City Business Strategy](#)  
[Cluster Progress Report](#)  
[Business Assistance/Tax](#)  
[Town Profiles](#)  
[Annual Report](#)  
[2000 CONPLAN](#)  
[CT Economic Digest](#)  
[CT Vacation Guide](#)  
[CT Market Data](#)  
[... or see all DECD Pubs](#)

### DECD Information

[What's New on the Site](#) *new*  
[Search the DECD Site](#)  
[Commissioner Bio](#)  
[Press Releases](#)  
[Contact Information](#)  
[Table of Contents](#)  
[DECD Legislation](#)  
[Download Forms](#)  
[DECD Videos](#)  
[About DECD](#)  
[Directions](#)

### Current Events and Projects

- [Latest at-a-glance economic indicators](#)
- [2002 DECD Legislative Summary](#)
- [August 2002 Economic Digest](#)
- [Gov. Rowland Launches the 2003 CT Inner City 10 Entrepreneurship Awards](#)
- [Gov. Rowland announces funding for new Waterbury Economic Resource Center](#)
- [RepCan 2002: Sept 19 - 20, 2002](#)
- [Office of Bioscience - Fact Sheet](#)
- [Elderly Rental Assistance Program Regs](#)
- [Tenants Rights In State Public Housing Regs](#)
- [Affordable Housing Appeals Regulations](#)
- [Check out what else is new at DECD](#)

Building better communities through sound economic development... that's what Connecticut's Department of Economic and Community Development is all about.

Whether it's improving housing through grants to cities and towns or creating well-paying jobs through assistance to business, DECD helps ensure a higher quality of life for people in communities across our state.



weather.com  
Enter a city or US Zip

Today's Weather

Department of Economic and Community Development - 505 Hudson Street - Hartford, Connecticut 06106-7107

© 2002 DECD / All State disclaimers and permissions apply / Privacy policy / Questions or comments / Updated 08/15/02

Go To **Connecticut** the official State of Connecticut Website

**2000 TOWN PROFILES**

**2000 MARKET DATA**

**CT Economic Digest**

**ECONOMIC DATA**

**ECONOMIC LINKS**

**RELOCATION INFO**

**Moving or Expanding a business?**

**Connecticut Business Training Networks**

**Smart Start**  
The First Step For Business

**INDUSTRY CLUSTERS**  
Partnership for Growth

**CONNECTICUT**  
FULL OF SURPRISES!

**YOU belong in CONNECTICUT**

**CONNECTICUT**  
FILM.COM Film, Video & Media Office

**Connecticut**  
Economic Resource Center, Inc.

**Kids Color Connecticut**

**CONNECTICUT**  
INNER CITY BUSINESS STRATEGY

ER Ref 2.8-6

DEPARTMENT OF ECONOMIC AND COMMUNITY DEVELOPMENT - STATE OF CONNECTICUT**2000 Connecticut Market Data**

[ [back to DECD Research page](#) ] [ [back to DECD Home](#) ] [ [Search](#) ]

The 2000 Connecticut Market Data is a summary of Connecticut economic and demographic statistics and comparative features. With more than 200 tables, it will answer your questions about Connecticut's people, economy and industries. The report also includes statistics on labor force, markets, business, education, housing, income, exports, foreign direct investments and more.

- [1999 Connecticut Market Data](#)
- [1995 Connecticut Market Data](#)

New content includes:

- [A Chapter on Energy](#)
- [Expanded State Rankings \(Table 01-01\)](#)
- [2000 Decennial Census Population Estimates for Towns and Regions](#)
- [Expanded Foreign Direct Investment Section \(Tables 09-07 through 09-10\)](#)
- [Richer Industry Detail \(Tables 08-36 through 08-47\)](#)

Use the table below to jump directly to the section in which you are interested or use the scroll bar to go to the specific table you wish to view. You can view the files in either Adobe Acrobat ([using Adobe Reader](#)) or in Microsoft Excel 97. Files with an asterisk (\*) indicate town level data.

CHAPTER TOPICS	
Chapter 1: OVERVIEW	Chapter 7: INCOME
Chapter 2: MARKETS	Chapter 8: ECONOMIC PROFILE
Chapter 3: GOVERNMENT	Chapter 9: INTERNATIONAL DATA
Chapter 4: TRANSPORTATION	Chapter 10: EDUCATION
Chapter 5: DEMOGRAPHICS	Chapter 11: HOUSING
Chapter 6: LABOR FORCE	Chapter 12: ENERGY
	Chapter 13: DATA SOURCES & LINKS

**CHAPTER 1 - OVERVIEW**

[PDF](#) [Excel](#) Table 01-01, Connecticut Rankings  
[PDF](#) [Excel](#) Table 01-02, Connecticut Facts

**CHAPTER 2 - MARKETS**

[PDF](#) [Excel](#) Table 02-01, Connecticut's Consumer Market  
[PDF](#) [Excel](#) Table 02-02, Connecticut's Industrial Market, 1997

## CHAPTER 3 - GOVERNMENT

[PDF](#) [Excel](#) Table 03-01, Connecticut State Revenue by Source, Fiscal Year 1998  
[PDF](#) [Excel](#) Table 03-02, Connecticut State Spending by Function, Fiscal Year 1998  
[PDF](#) [Excel](#) Table 03-03, Federal Government Grants and Other Payments to State and Local Government, Fiscal Years 1998 and 1999  
[PDF](#) [Excel](#) Table 03-04, State and Local Taxes as Percentage of Income, 1995-1996  
[PDF](#) [Excel](#) Table 03-05, Connecticut Government Employment by Function, 1997-1998  
[PDF](#) [Excel](#) Table 03-06, Connecticut Gross State Product Originating from Government, 1990-1999  
[PDF](#) [Excel](#) Table 03-07, Municipal Property Taxes and Grand Lists, 1998 \*  
[PDF](#) [Excel](#) Table 03-08, Government Tax Collection by Category, 1998

## CHAPTER 4 - TRANSPORTATION

[PDF](#) [Excel](#) Table 04-01, United States and Connecticut Transportation Facts  
[PDF](#) [Excel](#) Table 04-02, Connecticut Highway Conditions and Maintenance Cost  
[PDF](#) [Excel](#) Table 04-03, Connecticut Passenger Vehicles and Licensed Drivers by Town, 1999 \*  
[PDF](#) [Excel](#) Table 04-04, United States and Connecticut Airport Enplanement Activity Summary, 1998  
[PDF](#) [Excel](#) Table 04-05, Air Traffic Activity by Region, 1996

## CHAPTER 5 - DEMOGRAPHICS

[PDF](#) [Excel](#) Table 05-01, Population, Land Area, and Density By Region, 1999-2000 \*  
[PDF](#) [Excel](#) Table 05-02, United States and Connecticut Population and Growth Indexes, 1970-2000  
[PDF](#) [Excel](#) Table 05-03, Population Age Distribution in Connecticut, New England, and the United States  
[PDF](#) [Excel](#) Table 05-04, Municipal Population and Age Distribution, 1990 \*  
[PDF](#) [Excel](#) Table 05-05, Connecticut Population Growth by Town \*  
[PDF](#) [Excel](#) Table 05-06, Connecticut Land Use by Town \*

## CHAPTER 6 - LABOR FORCE

[PDF](#) [Excel](#) Table 06-01, Connecticut and United States Total Non-Farm Employment, 1978-2000  
[PDF](#) [Excel](#) Table 06-02, Employment by Labor Market Area  
[PDF](#) [Excel](#) Table 06-03, Connecticut Annual Average Employment by Industry, 1996-1999  
[PDF](#) [Excel](#) Table 06-04, Connecticut Employment by Occupation  
[PDF](#) [Excel](#) Table 06-05, Labor Force and Employment for Connecticut, Counties, LMA, and Towns, 1999 \*  
[PDF](#) [Excel](#) Table 06-06, Employment in Connecticut Towns, 1985-1999 \*  
[PDF](#) [Excel](#) Table 06-07, Employment in Connecticut Towns: Manufacturing, 1979-1999 \*  
[PDF](#) [Excel](#) Table 06-08, Connecticut and United States Unemployment, 1970-1999  
[PDF](#) [Excel](#) Table 06-09, Unemployment Rates in Connecticut by Town, 1990-1999 \*  
[PDF](#) [Excel](#) Table 06-10, Educational Attainment  
[PDF](#) [Excel](#) Table 06-11, Patents, 1998-1999

## CHAPTER 7 - INCOME

[PDF](#) [Excel](#) Table 07-01, Per Capita Personal Income, 1969-1997

[PDF](#) [Excel](#) Table 07-02, Real Per Capita Personal Income, 1969-1997  
[PDF](#) [Excel](#) Table 07-03, Effective Buying Income (EBI)  
[PDF](#) [Excel](#) Table 07-04, Real Per Capita Income and Its Sources  
[PDF](#) [Excel](#) Table 07-05, Earned Income by Industry  
[PDF](#) [Excel](#) Table 07-06, Share of Earned Income by Key Industry Sectors  
[PDF](#) [Excel](#) Table 07-07, Median Household Effective Buying Income (EBI)  
[PDF](#) [Excel](#) Table 07-08, Town Income Statistics, 2000 \*  
[PDF](#) [Excel](#) Table 07-09, Personal Income By County, 1990-1997

## CHAPTER 8 - ECONOMIC PROFILE

[PDF](#) [Excel](#) Table 08-01, Connecticut Employment and Establishments by Industry & Establishment Size, 1998  
[PDF](#) [Excel](#) Table 08-02, Connecticut Employment by Industry and Establishment Size, 1997  
[PDF](#) [Excel](#) Table 08-03, Real Gross State Product Per Capita, 1977-1997  
[PDF](#) [Excel](#) Table 08-04, Growth Rate of Real Gross State Product for Connecticut, New England, and United States, 1983-1997  
[PDF](#) [Excel](#) Table 08-05, Connecticut Gross State Product by Sector, 1982-1997  
[PDF](#) [Excel](#) Table 08-06, Sector Share of Gross State Product  
[PDF](#) [Excel](#) Table 08-07, Top 100 Companies Headquartered in Connecticut, 2000-2001  
[PDF](#) [Excel](#) Table 08-08, Sales for 20 Connecticut-based Subsidiaries, 2001  
[PDF](#) [Excel](#) Table 08-09, 20 Largest Connecticut Banks, 2001  
[PDF](#) [Excel](#) Table 08-10, 10 Largest Connecticut Insurance Companies, 2000  
[PDF](#) [Excel](#) Table 08-11, Connecticut Compared to the World's 40 Largest Economies  
[PDF](#) [Excel](#) Table 08-12, Agricultural Services, Forestry, and Fishing, 1990-1997  
[PDF](#) [Excel](#) Table 08-13, Connecticut Gross State Product Originating from Agriculture, 1990-1999  
[PDF](#) [Excel](#) Table 08-14, Productivity in Agriculture, Forestry, and Fishing  
[PDF](#) [Excel](#) Table 08-15, Construction and Mining, 1990-1997  
[PDF](#) [Excel](#) Table 08-16, Connecticut Gross State Product Originating from Construction and Mining, 1990-1999  
[PDF](#) [Excel](#) Table 08-17, Productivity in Construction and Mining  
[PDF](#) [Excel](#) Table 08-18, Manufacturing, 1990-1997  
[PDF](#) [Excel](#) Table 08-19, Capital Investment and Value Added in Manufacturing  
[PDF](#) [Excel](#) Table 08-20, Workforce Composition and Value Added in Manufacturing in Connecticut and United States  
[PDF](#) [Excel](#) Table 08-21, Connecticut Gross State Product Originating from Manufacturing, 1990-1999  
[PDF](#) [Excel](#) Table 08-22, Manufacturing Productivity  
[PDF](#) [Excel](#) Table 08-23, Transportation, Communications, and Public Utilities, 1990-1997  
[PDF](#) [Excel](#) Table 08-24, Connecticut Gross State Product Originating from Transportation, Communications, and Public Utilities, 1990-1999  
[PDF](#) [Excel](#) Table 08-25, Productivity in Transportation, Communications, and Public Utilities  
[PDF](#) [Excel](#) Table 08-26, Retail and Wholesale Trade, 1990-1997  
[PDF](#) [Excel](#) Table 08-27, Connecticut Gross State Product Originating from Retail and Wholesale Trade, 1990-1999  
[PDF](#) [Excel](#) Table 08-28, Productivity in Trade  
[PDF](#) [Excel](#) Table 08-29, Finance, Insurance, and Real Estate, 1990-1997  
[PDF](#) [Excel](#) Table 08-30, Connecticut Gross State Product Originating from Finance, Insurance, and Real Estate, 1990-1999  
[PDF](#) [Excel](#) Table 08-31, Productivity in Finance, Insurance, and Real Estate  
[PDF](#) [Excel](#) Table 08-32, Services, 1990-1997

[PDF](#) [Excel](#) Table 08-33, Connecticut Gross State Product Originating from Services, 1990-1999  
[PDF](#) [Excel](#) Table 08-34, Productivity in Services  
[PDF](#) [Excel](#) Table 08-35, Connecticut and United States Employment and Establishment Data by Industry, 1990-1997  
[PDF](#) [Excel](#) Table 08-36, Connecticut Employment, 1990-1999  
[PDF](#) [Excel](#) Table 08-37, New England Employment, 1990-1999  
[PDF](#) [Excel](#) Table 08-38, United States Employment, 1990-1999  
[PDF](#) [Excel](#) Table 08-39, Connecticut Gross State Product (GSP), 1990-1999 (Current Dollars)  
[PDF](#) [Excel](#) Table 08-40, New England Gross State Product (GSP), 1990-1999 (Current Dollars)  
[PDF](#) [Excel](#) Table 08-41, United States Gross State Product (GSP), 1990-1999 (Current Dollars)  
[PDF](#) [Excel](#) Table 08-42, Connecticut Gross State Product (GSP), 1990-1999 (1992 Dollars)  
[PDF](#) [Excel](#) Table 08-43, New England Gross State Product (GSP), 1990-1999 (1992 Dollars)  
[PDF](#) [Excel](#) Table 08-44, United States Gross State Product (GSP), 1990-1999 (1992 Dollars)  
[PDF](#) [Excel](#) Table 08-45, Connecticut Constant-dollar Productivity, 1990-1999  
[PDF](#) [Excel](#) Table 08-46, New England Constant-dollar Productivity, 1990-1999  
[PDF](#) [Excel](#) Table 08-47, United States Constant-dollar Productivity, 1990-1999

## CHAPTER 9 - INTERNATIONAL DATA

[PDF](#) [Excel](#) Table 09-01, Connecticut Exports by Country, 1988-1999  
[PDF](#) [Excel](#) Table 09-02, United States Exports and Connecticut Share by Country  
[PDF](#) [Excel](#) Table 09-03, Connecticut's Major Exporting Industries, 1994-1999  
[PDF](#) [Excel](#) Table 09-04, United States Exports and Connecticut Share by Industry  
[PDF](#) [Excel](#) Table 09-05, Connecticut and United States Exports, 1990-1999  
[PDF](#) [Excel](#) Table 09-06, Exports from Connecticut by Major Industry and Country, 1999  
[PDF](#) [Excel](#) Table 09-07, Total Dollar Value and Top Destinations of Exports through Connecticut Ports  
[PDF](#) [Excel](#) Table 09-08, Gross Value of Property, Plant, and Equip. of Foreign Affiliates by Country of Ultimate Beneficial Owner, 1993-1997  
[PDF](#) [Excel](#) Table 09-09, Foreign Affiliates Employment by Industry, 1997  
[PDF](#) [Excel](#) Table 09-10, Gross Value of Property, Plant, and Equipment of Affiliates by Industry, 1997

## CHAPTER 10 - EDUCATION

[PDF](#) [Excel](#) Table 10-01, Expenditure Per Student by State and Local Governments  
[PDF](#) [Excel](#) Table 10-02, Student/Teacher Ratio, 1985-1997  
[PDF](#) [Excel](#) Table 10-03, Scholastic Assessment Test Score Averages in Connecticut

## CHAPTER 11 - HOUSING

[PDF](#) [Excel](#) Table 11-01, Net Change in Connecticut Housing Units, 1980-1998  
[PDF](#) [Excel](#) Table 11-02, Housing Units by Town \*  
[PDF](#) [Excel](#) Table 11-03, Home Sales Prices by Town \*  
[PDF](#) [Excel](#) Table 11-04, Housing Unit Types by Town, 1999 \*

## CHAPTER 12 - ENERGY

[PDF](#) [Excel](#) Table 12-01, Energy Consumed in Connecticut, 1997  
[PDF](#) [Excel](#) Table 12-02, Petroleum Consumed in Connecticut, 1997

[PDF](#) [Excel](#) Table 12-03, Energy Consumption by Sector in Connecticut, 1997  
[PDF](#) [Excel](#) Table 12-04, Residential Use of Energy in Connecticut, 1997  
[PDF](#) [Excel](#) Table 12-05, Transportation Use of Energy in Connecticut, 1997  
[PDF](#) [Excel](#) Table 12-06, Commercial Use of Energy in Connecticut, 1997  
[PDF](#) [Excel](#) Table 12-07, Industrial Use of Energy in Connecticut, 1997  
[PDF](#) [Excel](#) Table 12-08, Connecticut Electricity Statistics, 1998  
[PDF](#) [Excel](#) Table 12-09, Five Largest Energy Utility Plants in Connecticut, 1998  
[PDF](#) [Excel](#) Table 12-10, Top Five Utilities Ranked by Retail Sales Revenue within the State, 1998  
[PDF](#) [Excel](#) Table 12-11, Energy Prices and Rankings in Connecticut, 1997  
[PDF](#) [Excel](#) Table 12-12, Connecticut Gasoline Price Survey, 2000  
[PDF](#) [Excel](#) Table 12-13, Federal and State Motor and Gasoline Taxes, 2000  
[PDF](#) [Excel](#) Table 12-14, Energy Conversion Factors

## CHAPTER 13 - DATA SOURCES & LINKS

[PDF](#) [Excel](#) Table 13-01, Listing of Data Sources & Links

To order, send this form with payment to:

Connecticut Economic Resource Center  
Research Department  
805 Brook Street, Bldg. 4  
Rocky Hill, CT 06067-3405

The CD presents the data as both spreadsheet files and pdf documents. Please make checks payable to Connecticut Economic Resource Center. Visa and MasterCard are also accepted. If you have any questions or need more information, please call CERC at 1-800-392-2122.

[DECD Home](#) / © 2002 Department of Economic and Community Development / [top](#)  
[State of CT Home](#) / [Disclaimers & permissions](#) / [Privacy policy](#) / [Questions or comments](#)

Date last updated Thursday, June 06, 2002

**Table 5.5—Connecticut Population Growth by Town**

Region	1980	1990	2000	AAGR* 1980-2000
Connecticut	3,107,580	3,287,116	3,405,565	0.5%
County				
Fairfield County	807,143	827,845	882,567	0.4%
Hartford County	807,769	851,783	857,183	0.3%
Litchfield County	156,788	174,092	182,193	0.8%
Middlesex County	129,017	143,196	155,071	0.9%
New Haven County	761,337	804,219	824,008	0.4%
New London County	238,410	254,957	259,088	0.4%
Tolland County	114,823	128,699	136,364	0.9%
Windham County	92,313	102,525	109,091	0.6%
Town				
Andover	2,144	2,540	3,036	1.6%
Ansonia	19,039	18,403	18,554	-0.1%
Ashford	3,221	3,765	4,098	1.2%
Avon	11,201	13,937	15,832	1.7%
Barkhamsted	2,952	3,369	3,494	0.8%
Beacon Falls	3,989	5,083	5,246	1.4%
Berlin	15,121	16,787	18,215	0.9%
Bethany	4,330	4,608	5,040	0.8%
Bethel	16,004	17,541	18,067	0.6%
Bethlehem	2,573	3,071	3,422	1.4%
Bloomfield	18,608	19,483	19,587	0.3%
Bolton	3,951	4,575	5,017	1.2%
Bozrah	2,135	2,297	2,357	0.5%
Branford	23,363	27,603	28,683	1.0%
Bridgeport	142,567	141,686	139,529	-0.1%
Bridgewater	1,563	1,654	1,824	0.8%
Bristol	57,265	60,640	60,062	0.2%
Brookfield	12,872	14,113	15,664	1.0%
Brooklyn	5,691	6,681	7,173	1.2%
Burlington	5,660	7,026	8,190	1.9%
Canaan	1,020	1,057	1,081	0.3%
Canterbury	3,426	4,467	4,692	1.6%
Canton	7,635	8,268	8,840	0.7%
Chaplin	1,772	2,048	2,250	1.2%
Cheshire	21,782	25,684	28,543	1.4%
Chester	3,068	3,417	3,743	1.0%
Clinton	11,195	12,767	13,094	0.8%
Colchester	7,761	10,980	14,551	3.2%
Colebrook	1,221	1,365	1,471	0.9%
Columbia	3,386	4,510	4,971	1.9%
Comwall	1,274	1,414	1,434	0.6%
Coventry	8,895	10,063	11,504	1.3%
Cromwell	10,265	12,286	12,871	1.1%
Danbury	60,495	65,585	74,848	1.1%
Darien	18,966	18,196	19,607	0.2%
Deep River	3,994	4,332	4,610	0.7%
Derby	12,348	12,199	12,391	0.0%
Durham	5,143	5,732	6,627	1.3%
Eastford	1,136	1,314	1,618	1.8%
East Granby	4,102	4,302	4,745	0.7%
East Haddam	5,621	6,676	8,333	2.0%
East Hampton	8,572	10,428	13,352	2.2%
East Hartford	52,563	50,452	49,575	-0.3%
East Haven	25,028	26,144	26,189	0.6%
East Lyme	13,870	15,340	18,118	1.3%
Easton	5,962	6,303	7,272	1.0%
East Windsor	8,925	10,081	9,818	0.5%
Ellington	9,711	11,197	12,921	1.4%
Enfield	42,695	45,532	45,212	0.3%
Essex	5,078	5,904	6,505	1.2%
Fairfield	54,849	53,418	57,340	0.2%
Farmington	16,390	20,608	23,641	1.8%
Franklin	1,592	1,810	1,835	0.7%
Glastonbury	24,327	27,901	31,676	1.4%

**Table 5.5—Connecticut Population Growth by Town**

Region	1980	1990	2000	AAGR* 1980-2000
Goshen	1,706	2,329	2,697	2.3%
Granby	7,971	9,369	10,347	1.3%
Greenwich	59,572	58,441	61,101	0.1%
Griswold	8,967	10,384	10,807	0.9%
Groton	41,072	45,144	39,907	-0.1%
Gulford	17,376	19,848	21,398	1.0%
Haddam	6,383	6,769	7,157	0.6%
Hamden	51,159	62,434	56,913	0.5%
Hampton	1,365	1,578	1,758	1.3%
Hartford	136,393	139,739	121,578	-0.6%
Hartland	1,400	1,866	2,012	1.8%
Harwinton	4,889	5,228	5,283	0.4%
Hebron	5,453	7,079	8,610	2.3%
Kent	2,487	2,918	2,858	0.7%
Killingly	14,519	15,889	16,472	0.6%
Killingworth	3,976	4,814	6,018	2.1%
Lebanon	4,762	6,041	6,907	1.9%
Ledyard	13,725	14,913	14,687	0.3%
Lisbon	3,279	3,790	4,069	1.1%
Litchfield	7,704	8,365	8,316	0.4%
Lyme	1,822	1,949	2,016	0.5%
Madison	14,030	15,485	17,858	1.2%
Manchester	49,761	51,618	54,740	0.5%
Mansfield	20,634	21,103	20,720	0.0%
Marlborough	4,746	5,535	5,709	0.9%
Meriden	57,116	59,479	58,244	0.1%
Middlebury	5,995	6,145	6,451	0.4%
Middlefield	3,810	3,925	4,203	0.5%
Middletown	39,026	42,762	43,167	0.5%
Milford	50,898	49,938	52,305	0.1%
Monroe	14,010	16,896	19,247	1.6%
Montville	16,455	16,673	18,546	0.6%
Morris	1,799	2,039	2,301	1.2%
Naugatuck	26,462	30,625	30,989	0.8%
New Britain	73,852	75,491	71,538	-0.2%
New Canaan	17,902	17,864	19,395	0.4%
New Fairfield	11,235	12,911	13,953	1.1%
New Hartford	4,884	5,769	6,068	1.1%
New Haven	126,021	130,474	123,626	-0.1%
Newington	28,858	29,208	29,306	0.1%
New London	28,843	28,540	25,671	-0.6%
New Milford	19,420	23,629	27,121	1.7%
Newtown	19,107	20,779	25,031	1.4%
Norfolk	2,156	2,060	1,660	-1.3%
North Branford	11,554	12,996	13,906	0.9%
North Canaan	3,167	3,284	3,350	0.3%
North Haven	22,078	22,247	23,035	0.2%
North Stonington	4,219	4,884	4,991	0.8%
Norwalk	77,722	78,331	82,951	0.3%
Norwich	38,134	37,391	36,117	-0.3%
Old Lyme	6,159	6,535	7,406	0.9%
Old Saybrook	9,287	9,552	10,367	0.6%
Orange	13,237	12,830	13,233	0.0%
Oxford	6,634	8,685	9,821	2.0%
Plainfield	12,774	14,363	14,619	0.7%
Plainville	16,528	17,392	17,328	0.2%
Plymouth	10,732	11,822	11,634	0.4%
Pomfret	2,662	3,102	3,798	1.8%
Portland	8,383	8,418	8,732	0.2%
Preston	4,584	5,006	4,688	0.1%
Prospect	6,815	7,775	8,707	1.2%
Putnam	8,580	9,031	9,002	0.2%
Redding	7,272	7,927	8,270	0.6%
Ridgefield	20,120	20,919	23,643	0.8%
Rocky Hill	14,547	16,554	17,966	1.1%
Roxbury	1,616	1,825	2,136	1.4%



**Table 5.5—Connecticut Population Growth by Town**

Region	1980	1990	2000	AAGR* 1980-2000
Salem	2,335	3,310	3,858	2.5%
Salisbury	3,896	4,090	3,977	0.1%
Scotland	1,051	1,215	1,556	2.0%
Seymour	13,434	14,288	15,454	0.7%
Sharon	2,637	2,928	2,968	0.6%
Shelton	31,314	35,418	38,101	1.0%
Sherman	2,281	2,809	3,827	2.6%
Simsbury	21,161	22,023	23,234	0.5%
Somers	8,473	9,108	10,417	1.0%
Southbury	14,156	15,818	18,567	1.4%
Southington	36,860	38,518	39,728	0.4%
South Windsor	17,198	22,090	24,412	1.8%
Sprague	2,996	3,008	2,971	0.0%
Stafford	9,268	11,091	11,307	1.0%
Stamford	102,459	108,056	117,083	0.7%
Sterling	1,791	2,357	3,099	2.8%
Stonington	16,220	16,919	17,906	0.5%
Stratford	50,541	49,389	49,976	-0.1%
Suffield	9,294	11,427	13,552	1.9%
Thomaston	6,276	6,947	7,503	0.9%
Thompson	8,141	8,668	8,878	0.4%
Tolland	9,694	11,001	13,146	1.5%
Torrington	30,987	33,887	35,202	0.6%
Trumbull	32,968	32,016	34,243	0.2%
Union	546	612	693	1.2%
Vernon	27,974	29,841	28,063	0.0%
Voluntown	1,637	2,113	2,528	2.2%
Wallingford	37,276	40,822	43,026	0.7%
Warren	1,045	1,226	1,254	0.9%
Washington	3,509	3,905	3,596	0.1%
Waterbury	103,266	108,961	107,271	0.2%
Waterford	17,843	17,930	19,152	0.4%
Watertown	19,489	20,456	21,661	0.5%
West Hartford	61,306	60,110	63,589	0.2%
West Haven	53,184	54,021	52,360	-0.1%
Westbrook	5,216	5,414	6,292	0.9%
Weston	8,284	8,648	10,037	1.0%
Westport	25,290	24,410	25,749	0.1%
Wethersfield	26,008	25,651	26,271	0.1%
Willington	4,694	5,979	5,959	1.2%
Wilton	15,351	15,989	17,633	0.7%
Winchester	10,824	11,524	10,664	-0.1%
Windham	21,062	22,039	22,857	0.4%
Windsor Locks	12,190	12,358	12,043	-0.1%
Windsor	25,204	27,817	28,237	0.6%
Wolcott	13,008	13,700	15,215	0.8%
Woodbridge	7,761	7,924	8,983	0.7%
Woodbury	6,942	8,131	9,198	1.4%
Woodstock	5,102	6,008	7,221	1.8%

\*AAGR: Annual Average Growth Rate

Source: U.S. Bureau of the Census. Decennial Census Data.

**Table 5.6--Connecticut Land Use by Town, 1997**

TOWN	Acres								Sq Miles
	Total	Urban	Agriculture	Forest	Barren	Water	Wetland	Other	
Andover	10,033	309	950	8,359	61	281	72	1	15.7
Ansonia	4,000	1,892	481	1,472	25	91	37	1	6.3
Ashford	25,269	622	2,384	21,220	83	479	466	15	39.5
Avon	14,992	1,679	2,919	9,780	146	349	108	12	23.4
Barkhamsted	24,775	540	1,180	20,870	45	1,870	247	23	38.7
Beacon Falls	6,312	580	905	4,271	331	147	69	8	9.9
Berlin	17,356	3,201	4,909	8,527	109	500	88	22	27.1
Bethany	13,690	507	1,721	11,074	75	272	36	4	21.4
Bethel	10,844	1,750	7,441	1,359	127	51	106	10	16.9
Bethlehem	12,574	287	4,184	7,820	41	224	18	-	19.6
Bloomfield	16,870	2,734	5,579	8,081	201	136	135	5	26.4
Bolton	9,433	569	1,825	6,684	67	221	66	-	14.7
Bozrah	12,982	530	2,020	9,975	195	193	55	12	20.3
Branford	14,208	4,129	2,801	5,665	93	505	926	89	22.2
Bridgeport	10,463	8,359	951	543	34	370	85	121	16.3
Bridgewater	11,110	192	2,469	7,751	15	645	30	9	17.4
Bristol	17,168	6,451	3,644	6,250	179	296	32	316	26.8
Brookfield	13,036	2,023	2,660	7,637	123	480	42	71	20.4
Brooklyn	18,653	705	3,385	13,114	173	277	947	51	29.1
Burlington	19,499	683	1,872	16,077	150	563	124	30	30.5
Canaan	21,212	348	2,263	17,571	54	418	556	2	33.1
Canterbury	25,758	751	3,996	18,929	601	406	1,042	34	40.2
Canton	16,014	837	1,595	13,024	108	309	133	9	25.0
Chaplin	12,569	357	1,302	10,431	69	130	272	7	19.6
Cheshire	21,165	3,517	5,477	11,335	285	361	83	105	33.1
Chester	10,745	777	705	8,477	67	501	217	1	16.8
Clinton	10,421	2,074	1,055	6,095	124	180	762	131	16.3
Colchester	31,768	2,099	4,659	23,616	356	528	428	82	49.6
Colebrook	21,047	386	1,253	17,891	54	1,058	318	86	32.9
Columbia	14,018	623	2,178	10,534	88	431	158	6	21.9
Cornwall	29,717	341	2,653	26,032	93	447	151	0	46.4
Coventry	24,505	1,218	4,598	17,860	150	482	190	6	38.3
Cromwell	8,301	1,854	2,402	2,842	346	395	449	13	13.0
Danbury	28,117	7,375	7,347	11,281	134	1,569	363	48	43.9
Darien	8,140	1,930	4,556	934	247	248	156	68	12.7
Deep River	9,044	819	781	6,749	29	433	112	120	14.1
Derby	3,472	1,415	639	1,125	31	244	13	5	5.4
Durham	15,215	750	3,912	9,774	90	133	409	146	23.8
Eastford	18,779	347	1,895	15,573	88	428	432	16	29.3
East Granby	11,217	1,230	3,548	5,460	145	95	488	251	17.5
East Haddam	36,234	1,251	3,613	29,224	149	1,607	368	22	56.6
East Hampton	23,673	981	1,690	19,834	48	922	191	7	37.0
East Hartford	12,024	6,438	2,425	2,519	152	446	42	2	18.8
East Haven	8,048	3,212	1,606	2,381	122	262	385	79	12.6
East Lyme	22,298	2,845	2,521	15,071	377	949	363	171	34.8
Easton	18,310	647	13,888	2,841	59	810	64	2	28.6
East Windsor	17,107	2,162	6,734	6,052	1,394	391	366	8	26.7
Ellington	22,139	1,467	7,572	12,033	542	395	128	2	34.6
Enfield	21,905	6,107	6,412	7,699	966	602	99	21	34.2
Essex	7,545	1,160	807	4,393	46	927	204	8	11.8
Fairfield	19,432	5,595	8,554	4,047	210	471	334	219	30.4
Farmington	18,383	3,049	4,189	9,911	163	621	172	278	28.7
Franklin	12,590	435	3,371	8,351	290	54	86	2	19.7
Glastonbury	33,415	3,555	6,645	21,749	641	688	132	5	52.2
Goshen	28,934	612	4,159	22,547	30	1,333	252	1	45.2
Granby	26,298	1,516	4,305	19,717	131	114	386	131	41.1
Greenwich	31,076	6,953	10,801	11,274	522	958	471	98	48.6
Griswold	23,652	1,441	3,803	14,616	804	1,515	1,337	136	37.0
Groton	20,704	5,883	2,770	9,891	251	1,306	418	185	32.4
Guilford	30,282	2,709	4,783	20,622	137	648	1,278	106	47.3
Haddam	29,625	1,260	2,213	24,107	79	1,617	346	3	46.3
Hamden	21,278	5,759	3,812	10,534	126	473	488	85	33.2
Hampton	16,277	444	2,191	12,917	45	245	432	2	25.4

**Table 5.6--Connecticut Land Use by Town, 1997**

TOWN	Acres								Sq Miles
	Total	Urban	Agriculture	Forest	Barren	Water	Wetland	Other	
Hartford	11,554	8,158	1,992	847	67	435	48	6	18.1
Hartland	21,935	283	654	19,730	29	1,092	116	31	34.3
Harwinton	19,907	678	2,190	16,456	93	363	112	15	31.1
Hebron	23,936	980	3,992	18,088	112	362	400	3	37.4
Kent	31,808	449	3,644	26,337	76	963	335	5	49.7
Killingly	31,964	2,359	3,387	21,704	247	1,182	2,888	197	49.9
Killingworth	23,002	605	1,476	20,208	81	328	276	27	35.9
Lebanon	35,300	992	9,672	22,985	376	859	381	35	55.2
Ledyard	25,543	2,240	2,668	18,884	161	1,240	327	22	39.9
Lisbon	10,685	755	1,663	7,367	283	381	223	14	16.7
Litchfield	36,435	1,216	6,973	26,694	134	819	597	2	56.9
Lyme	22,050	620	1,767	17,088	65	1,754	741	15	34.5
Madison	23,489	2,401	2,368	16,769	153	288	1,326	184	36.7
Manchester	17,705	6,711	3,690	6,537	147	180	191	249	27.7
Mansfield	29,176	2,338	5,176	20,078	275	674	565	71	45.6
Marlborough	15,032	774	1,155	12,837	20	145	101	0	23.5
Meriden	15,325	5,885	4,179	4,656	71	316	101	116	23.9
Middlebury	11,788	950	2,010	8,195	111	433	71	17	18.4
Middlefield	8,401	515	3,087	4,164	156	418	53	7	13.1
Middletown	27,400	4,837	6,955	14,033	159	1,133	256	26	42.8
Milford	14,694	6,822	2,829	2,648	50	696	1,163	485	23.0
Monroe	16,823	1,971	11,831	2,569	185	162	72	32	26.3
Montville	28,315	2,915	3,135	20,062	543	1,442	186	31	44.2
Morris	11,962	289	2,756	7,727	55	1,046	85	5	18.7
Naugatuck	10,521	3,150	1,542	5,485	172	130	31	11	16.4
New Britain	8,597	5,432	2,030	1,041	26	53	10	6	13.4
New Canaan	14,424	1,504	7,784	4,447	328	276	80	6	22.5
New Fairfield	16,102	1,045	1,814	9,993	38	3,137	65	10	25.2
New Hartford	24,362	716	2,829	19,468	96	906	322	26	38.1
New Haven	12,288	8,680	1,328	1,520	14	424	236	86	19.2
Newington	8,394	3,793	2,676	1,791	52	42	38	2	13.1
New London	3,979	2,640	378	426	11	478	13	32	6.2
New Milford	40,881	2,660	8,665	27,019	325	1,750	233	229	63.9
Newtown	37,697	2,422	22,773	10,993	243	966	223	76	58.9
Norfolk	29,663	510	1,832	25,848	105	1,001	360	7	46.3
North Branford	17,231	1,917	3,576	9,684	191	1,188	78	599	26.9
North Canaan	12,495	732	3,938	6,885	618	112	184	26	19.5
North Haven	13,510	5,338	3,904	3,455	152	204	419	38	21.1
North Stonington	35,159	1,372	3,708	27,191	234	577	1,817	259	54.9
Norwalk	14,753	7,343	4,679	1,884	108	290	374	76	23.1
Norwich	18,777	4,751	3,394	9,415	300	762	131	24	29.3
Old Lyme	15,543	1,848	1,494	9,477	117	1,175	1,299	132	24.3
Old Saybrook	10,032	2,705	924	4,515	75	586	1,098	129	15.7
Orange	11,135	2,443	3,985	4,394	75	169	51	18	17.4
Oxford	21,331	843	2,649	17,126	149	422	134	9	33.3
Plainfield	27,559	2,079	5,505	16,589	840	341	1,825	380	43.1
Plainville	6,308	2,714	1,066	2,008	36	52	64	369	9.9
Plymouth	14,284	1,350	1,887	10,468	115	356	71	37	22.3
Pomfret	25,968	556	5,023	18,989	46	316	956	82	40.6
Portland	15,624	1,178	2,464	10,742	205	843	186	6	24.4
Preston	20,317	1,118	4,252	13,051	375	597	902	22	31.7
Prospect	9,238	1,046	998	6,874	107	182	17	15	14.4
Putnam	13,043	1,367	1,807	7,816	64	153	1,545	292	20.4
Redding	20,496	591	16,174	3,228	41	344	110	7	32.0
Ridgefield	22,310	1,482	16,793	3,315	75	402	168	74	34.9
Rocky Hill	8,835	2,223	3,186	2,450	670	250	30	26	13.8
Roxbury	16,823	225	2,853	13,444	39	233	23	5	26.3
Salem	19,000	796	2,417	14,874	157	523	216	17	29.7
Salisbury	38,514	925	8,580	26,223	187	2,243	336	22	60.2
Scotland	11,997	343	2,334	9,015	139	74	84	8	18.7
Seymour	9,565	1,894	1,598	5,612	65	315	66	14	14.9
Sharon	38,209	588	7,627	28,407	176	1,005	397	9	59.7
Shelton	20,407	4,799	5,175	9,297	123	869	83	61	31.9

**Table 5.6--Connecticut Land Use by Town, 1997**

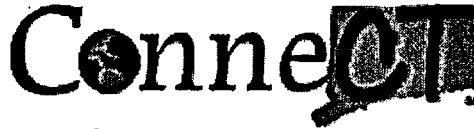
TOWN	Acres								Sq Miles
	Total	Urban	Agriculture	Forest	Barren	Water	Wetland	Other	
Sherman	14,971	267	2,034	11,489	11	1,128	23	19	23.4
Simsbury	21,970	2,228	5,077	13,763	375	235	261	31	34.3
Somers	18,324	1,375	6,152	10,144	434	80	130	9	28.6
Southbury	25,601	1,894	4,969	17,764	107	671	126	70	40.0
Southington	23,376	5,861	5,837	10,709	292	533	182	162	36.5
South Windsor	18,368	3,655	6,400	6,536	1,132	412	225	7	28.7
Sprague	8,841	327	1,440	6,429	264	313	47	21	13.8
Stafford	37,583	1,588	2,573	32,059	288	609	400	66	58.7
Stamford	24,590	10,153	4,804	8,649	88	617	159	121	38.4
Sterling	17,478	420	2,013	13,763	279	56	875	72	27.3
Stonington	25,049	2,920	4,643	14,158	97	883	2,241	106	39.1
Stratford	11,564	5,856	2,117	1,727	56	843	797	168	18.1
Suffield	27,554	1,846	11,607	12,027	1,175	588	308	3	43.1
Thomaston	7,775	1,232	1,159	5,128	38	195	21	2	12.1
Thompson	31,159	1,136	4,056	21,443	172	1,024	3,149	179	48.7
Tolland	25,738	1,941	2,637	20,194	82	514	368	3	40.2
Torrington	25,783	4,272	3,391	17,141	222	457	277	33	40.3
Trumbull	15,098	4,380	5,620	4,668	150	183	39	59	23.6
Union	19,066	417	625	17,023	33	743	201	24	29.8
Vernon	11,597	3,313	2,255	5,621	76	242	71	18	18.1
Voluntown	25,456	513	1,757	20,317	210	554	2,020	86	39.8
Wallingford	25,821	6,226	9,088	9,251	397	468	179	212	40.3
Warren	17,597	168	1,832	14,689	21	959	117	11	27.5
Washington	24,728	423	5,135	18,418	59	643	50	0	38.6
Waterbury	18,557	10,136	2,480	5,326	186	337	44	48	29.0
Waterford	21,909	4,004	2,940	13,206	126	1,296	225	112	34.2
Watertown	18,960	2,818	5,954	9,580	128	428	36	16	29.6
West Hartford	14,336	5,226	4,907	3,735	73	320	71	5	22.4
West Haven	7,007	4,644	987	815	53	256	88	163	10.9
Westbrook	10,309	1,459	849	7,130	126	180	430	135	16.1
Weston	13,224	601	9,032	2,891	30	611	52	7	20.7
Westport	12,917	2,801	6,674	2,405	209	301	369	158	20.2
Wethersfield	8,430	2,772	3,211	1,594	202	525	125	1	13.2
Willington	21,467	1,178	1,675	17,659	95	232	405	222	33.5
Wilton	17,498	1,245	11,971	3,747	91	336	100	8	27.3
Winchester	21,675	1,351	1,769	16,922	119	1,282	174	58	33.9
Windham	17,772	2,823	3,493	10,141	483	402	226	203	27.8
Windsor Locks	5,976	3,257	1,334	946	190	216	26	8	9.3
Windsor	19,869	4,771	6,599	5,873	1,141	1,130	332	22	31.0
Wolcott	13,539	1,727	1,360	9,745	163	479	47	18	21.2
Woodbridge	12,283	917	2,244	8,752	39	226	102	5	19.2
Woodbury	23,514	915	4,905	16,999	138	302	91	164	36.7
Woodstock	39,495	1,005	7,929	27,918	247	990	1,378	27	61.7

Source: Connecticut Department of Environmental Protection, 1997

[go to text version](#)

# State of Connecticut

Governor  
**John G. Rowland**  
Welcomes You



About  
Connecticut  
What's New



Features Below...

August 19, 2002

Infoline Health/Human  
Services (dial 211)

Find Farmers' Markets  
In your area

[Drought Information](#)  
[Weather](#)  
[Lottery Results](#)  
[Tax Information](#)

State Government

[Executive](#) [Judicial](#) [Legislative](#)

[Agencies/Organizations](#) [People](#)

Answers

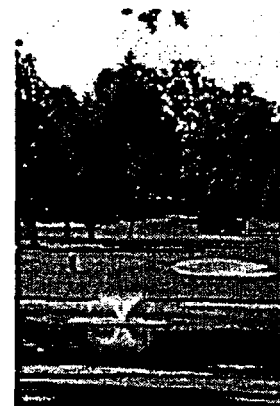
[Search](#) [A to Z](#) [FAQs](#)

or Special Interest

[Licenses/Permits](#) [Towns/Cities](#)

[Tourism](#) [Commerce](#) [Education](#)

**Citizen Assistance & Information**  
*for events related to September 11, 2001*



[Photo Gallery](#)  
[You Belong In CT](#)

State of Connecticut [Disclaimer](#) and [Privacy Policy](#). Copyright © 2001 State of Connecticut. ConneCT is coordinated by the ConneCT Management Advisory Committee (CMAC). Universal Website Accessibility Policy applies.



Executive

Judicial

Legislative

Agencies/Organizations

Search

A to Z

Tourism

Towns/Cities

People



# Agencies/Organizations

State Agencies and Government Organizations

[All State Agencies](#) | [Other Organizations](#)

## Index of All State Agencies

[A](#) | [B](#) | [C](#) | [D](#) | [E](#) | [F](#) | [G](#) | [H](#) | [I](#) | [J](#) | [K](#) | [L](#) | [M](#) | [N](#) | [O](#) | [P](#) | [Q](#) | [R](#) | [S](#) | [T](#) | [U](#) | [V](#) | [W](#) | [X](#) | [Y](#) | [Z](#)

All Agencies and Offices in Connecticut State Government are listed alphabetically below with hyperlinks to available websites. You may also use the [State Government Telephone Directory](#) for information on how to contact any of these agencies and offices.

- [Administrative Services](#), Department of
- [African-American Affairs Commission](#)
- [Aging](#), Connecticut Commission on
- [Agricultural Experiment Station](#), Connecticut
- [Agriculture](#), Department of
- [Arts](#), Connecticut Commission on the
- [Attorney General](#), Office of the State
- [Auditors of Public Accounts](#)
- [Banking](#), Department of
- [Blind](#), Board of Education and Services for the
- [Capitol Child Development Center](#)
- [Charter Oak College](#)
- [Chief State's Attorney](#), Office of the
- [Child Advocate](#), Office of the
- [Children and Families](#), Department of
- [Children](#), Commission on
- [Claims Commissioner](#), Office of the
- [Comptroller](#), Office of the State
- [Commission on Custody, Divorce and Children](#)
- [Commission on Fire Prevention and Control](#)
- [Commission on the Deaf and Hearing Impaired \(CDHI\)](#)
- [Commission for Educational Technology](#)
- [Connecticut Community-Technical Colleges](#)
- [Connecticut Council on Developmental Disabilities](#)
- [Connecticut Development Authority](#)
- [Connecticut Distance Learning Consortium](#)
- [Connecticut Historical Commission](#)
- [Connecticut Housing Finance Authority](#)
- [Connecticut Lottery Corporation](#)
- [Connecticut National Guard](#)

- Connecticut Resources Recovery Authority
- Connecticut Siting Council
- Connecticut State University System
- Consumer Counsel, Office of
- Consumer Protection, Department of
- Correction, Department of
- Criminal Justice Commission
- Criminal Justice, Division of
- Deaf and Hearing Impaired, State Commission on the
- Development Authority, Connecticut
- Developmental Disabilities, Connecticut Council on
- Disabilities, Office of Protection and Advocacy for Persons with
- Economic and Community Development, Department of
- Education, State Department of
- Elections Enforcement Commission, State
- Environmental Protection, Department of
- Environmental Quality, Council on
- Ethics Commission
- Fire Prevention and Control, Commission on
- Firearms Permit Examiners, Board of
- Fiscal Analysis, Office of
- Freedom of Information Commission
- Gaming Policy Board
- Governor's Office
- Health Care Access, Office of
- Higher Education, Department of
- Housing Finance Authority, Connecticut
- Human Rights and Opportunities, Commission on
- Information Technology, Department of
- Insurance and Risk Management Board, State
- Insurance, Department of
- Labor, Department of
- Latino & Puerto Rican Affairs, Commission on
- Law Revision Commission, Connecticut
- Legislative Commissioners' Office
- Legislative Management
- Legislative Program Review and Investigations
- Legislative Research, Office of
- Library, Connecticut State
- Lieutenant Governor's Office
- Managed Care Ombudsman, Office of
- Medical Examiner, Office of the Chief
- Mental Health and Addiction Services, Department of
- Mental Retardation, Department of
- Military Department
- Motor Vehicles, Department of
- Pardons, Board of
- Parole, Connecticut Board of
- Permanent Commission on the Status of Women
- Police Officer Standards and Training Council
- Policy and Management, Office of

- [Properties Review Board](#)
- [Psychiatric Security Review Board](#)
- [Public Defender Services, Division of](#)
- [Public Health, Department of](#)
- [Public Safety, Department of](#)
- [Public Utility Control, Department of](#)
- [Public Works, Department of](#)
- [Revenue Services, Department of](#)
- [Secretary of the State](#)
- [Siting Council, Connecticut](#)
- [Social Services, Department of](#)
- [Soldiers', Sailors' and Marines' Fund](#)
- [Special Revenue, Division of](#)
- [Tax Department \(Revenue Services\)](#)
- [Teachers' Retirement Board](#)
- [Transportation, Department of](#)
- [Treasurer, Office of the State](#)
- [University of Connecticut](#)
- [University of Connecticut Health Center](#)
- [Veterans Affairs, Department of](#)
- [Victim Advocate, Office of the](#)
- [Women, Permanent Commission on the Status of](#)
- [Workers' Compensation Commission](#)

---

## Other Organizations

The following is an alphabetical listing of hyperlinks that direct you to other organizations and projects in Connecticut.

- [Bureau of Rehabilitation Services](#)
- [Community Economic Development Fund \(CEDF\)](#)
- [ConneCT Management Advisory Committee \(CMAC\)](#)
- [Connecticut Academy of Science and Engineering](#)
- [Connecticut Center for Economic Analysis](#) - The umbrella organization for *The Connecticut Economy: A University of Connecticut Quarterly Review*, the Forecasting and Analysis group, and the Center for Economic Education. CCEA is also now a constituent member of the University of Connecticut's Consortium for Public Policy Research.
- [Connecticut Children's Health Council](#)
- [Connecticut Council of Family Service Agencies \(CCFSA\)](#)
- [Connecticut Council on Developmental Disabilities](#)
- [Connecticut Environmental Network](#)
- [Connecticut Food Policy Council](#)
- [Connecticut Freedom Trail](#)
- [Connecticut Head Start State Collaboration Office](#)
- [Connecticut Higher Education Trust](#)
- [Connecticut Housing Finance Authority \(CHFA\)](#)
- [Connecticut Innovations](#)



- [Connecticut Office of Tourism](#)
- [Connecticut Policy and Economic Council \(CPEC\)](#)
- [Connecticut Protective Services Employee Coalition](#)
- [Connecticut Society of Governmental Accountants](#)
- [Connecticut State Employees Association \(CSEA\)](#)
- [Connecticut State Employees' Campaign for Charitable Giving \(CSEC\)](#)
- [Connecticut State Employees' Toastmasters Clubs](#)
- [Core-CT Project](#)
- [Council of Fiscal Officers \(CFO\)](#)
- [CT Chapter of the American Society for Public Administration](#)
- [CTN -The Connecticut Network](#). Coverage of state government deliberations and public policy events via the Internet and on cable or public "access" channels throughout Connecticut.
- [Fatherhood Initiative of Connecticut](#)
- [First Company Governor's Horse Guards](#)
- [Food Policy Council](#)
- [Governor's Prevention Initiative for Youth \(GPIY\)](#)
- [Healthcare for Uninsured Kids and Youth \(HUSKY\)](#)
- [Healthy Child Care Connecticut](#)
- [House Democrats Office](#)
- [House Republican Office](#)
- [Information Technology Managers Association \(ITMA\)](#)
- [Juvenile Justice Advisory Committee \(JJAC\) Home Page](#)
- [League of Women Voters of Connecticut](#)
- [Made in Connecticut Guild](#)
- [National Property Management Association \(NPMA\)](#)
- [Northeast District Department of Health](#)
- [OnlineCSU](#), the online classroom of the four Connecticut State Universities
- [Public Health Committee](#)
- [Second Company Governor's Foot Guard](#)
- [Senate Democrats](#)
- [Senate Republicans](#)
- [Software Management Policy Committee \(SMPC\)](#)

Get **YOUR** photos on the Web **HOW?** Click here

**backtoTOP**

---

[Home](#) | [New](#) | [About](#) | [Symbols](#) | [Welcome](#) | [Executive](#) | [Judicial](#) | [Legislative](#) | [Agencies](#) | [People](#) | [Search](#) | [AtoZ](#) | [FAQs](#) | [Licenses](#) | [Tourism](#) | [Commerce](#) | [Education](#) | [Towns](#)

Send mail to [webmaster@po.state.ct.us](mailto:webmaster@po.state.ct.us). Copyright 1995 to 2001 State of Connecticut.  
All State [disclaimers](#) and [permissions](#) apply.