



---

# Yankee Atomic Electric Company LTP Submittal Overview

---

Meeting with USNRC

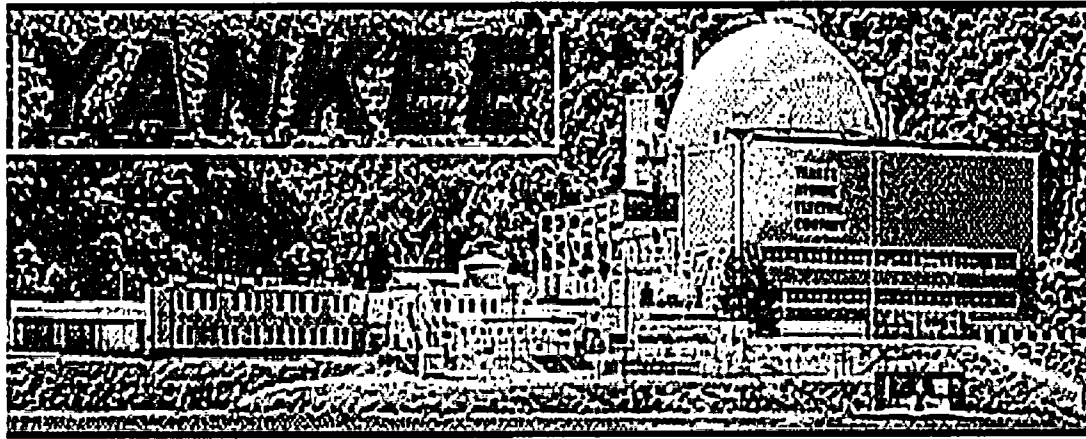
April 6, 2004

---

# Discussion Topics

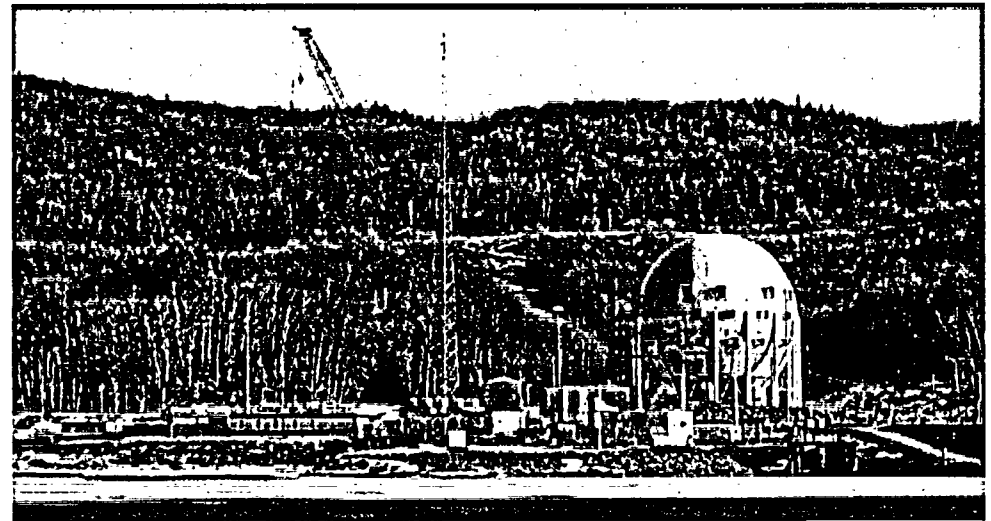
- Update of Decommissioning Progress
- LTP-Related Submittals
- Hydrogeologic Report
- Related Activities – 2004
- Future Communications with NRC

# Update of Decommissioning Progress



During  
Operations

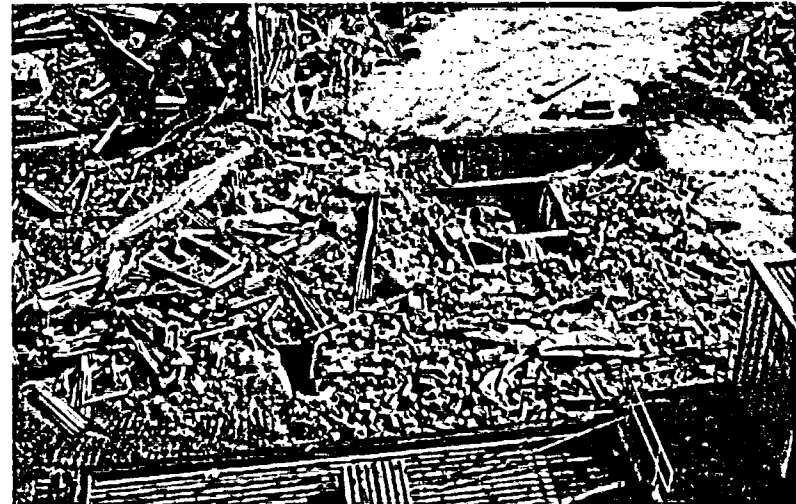
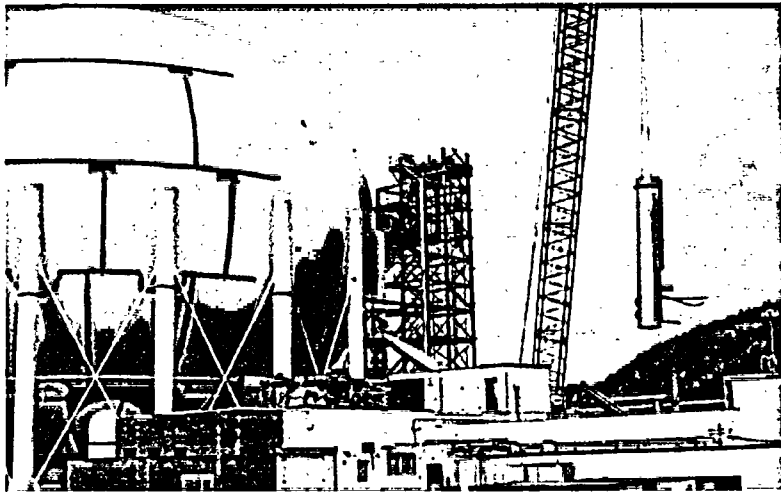
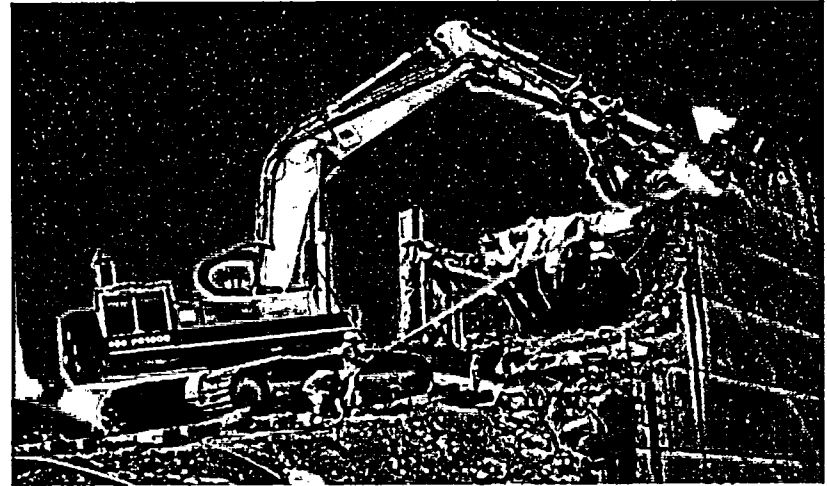
Currently



# Update of Decommissioning Progress

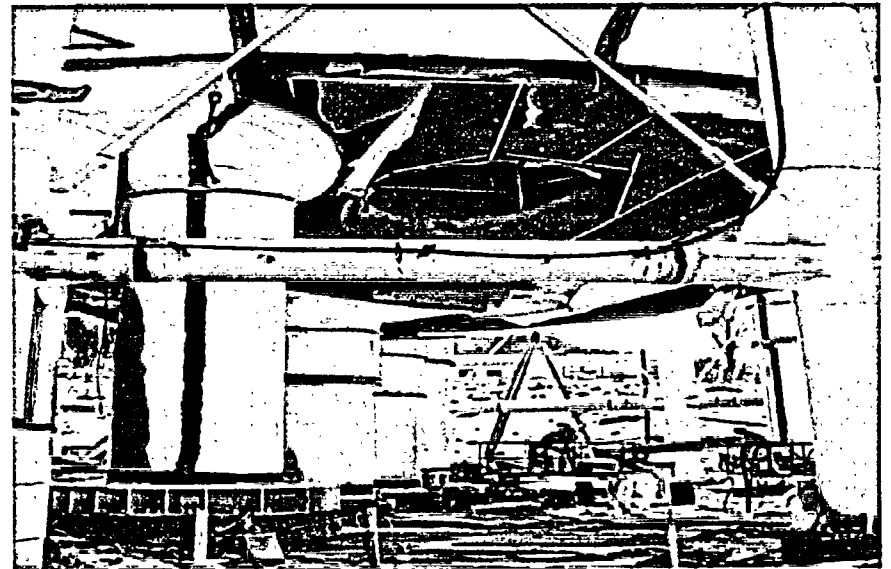
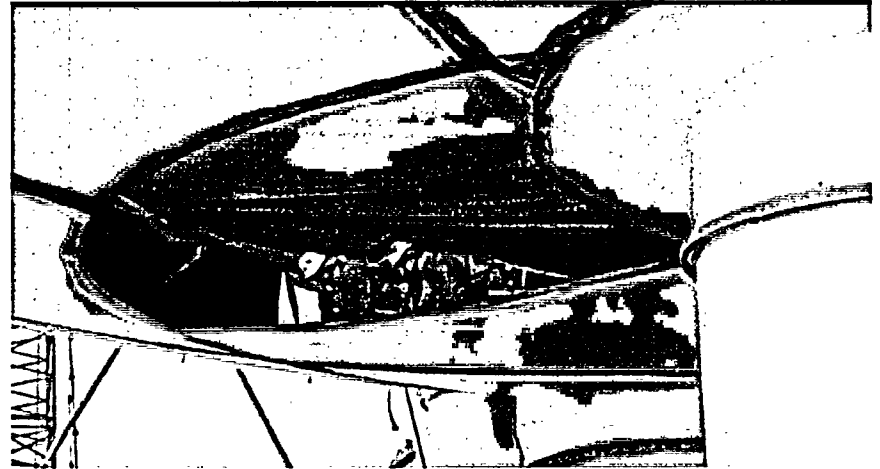
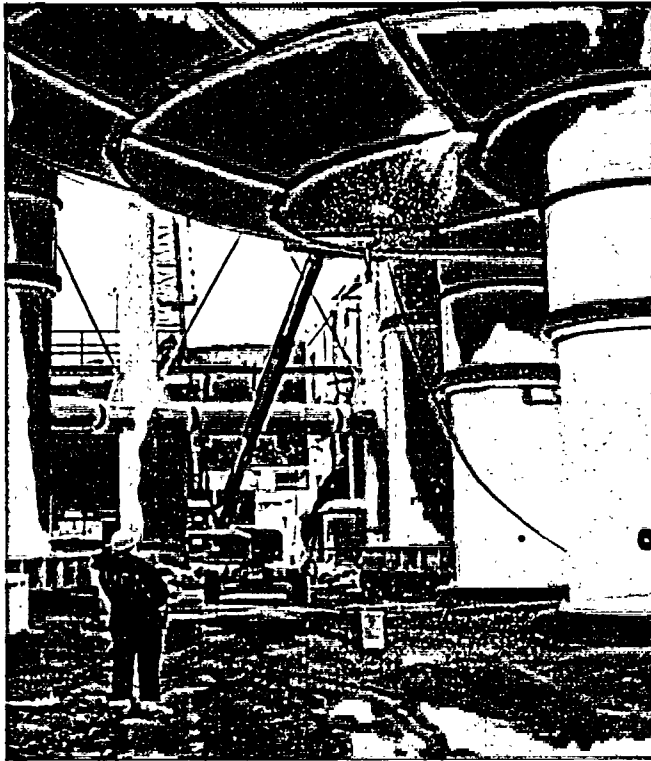
## ■ Building Demolition

- Turbine Building Monolith
- Waste Warehouse
- Safe Shutdown Building
- Fuel Transfer Enclosure
- Plant Vent Stack

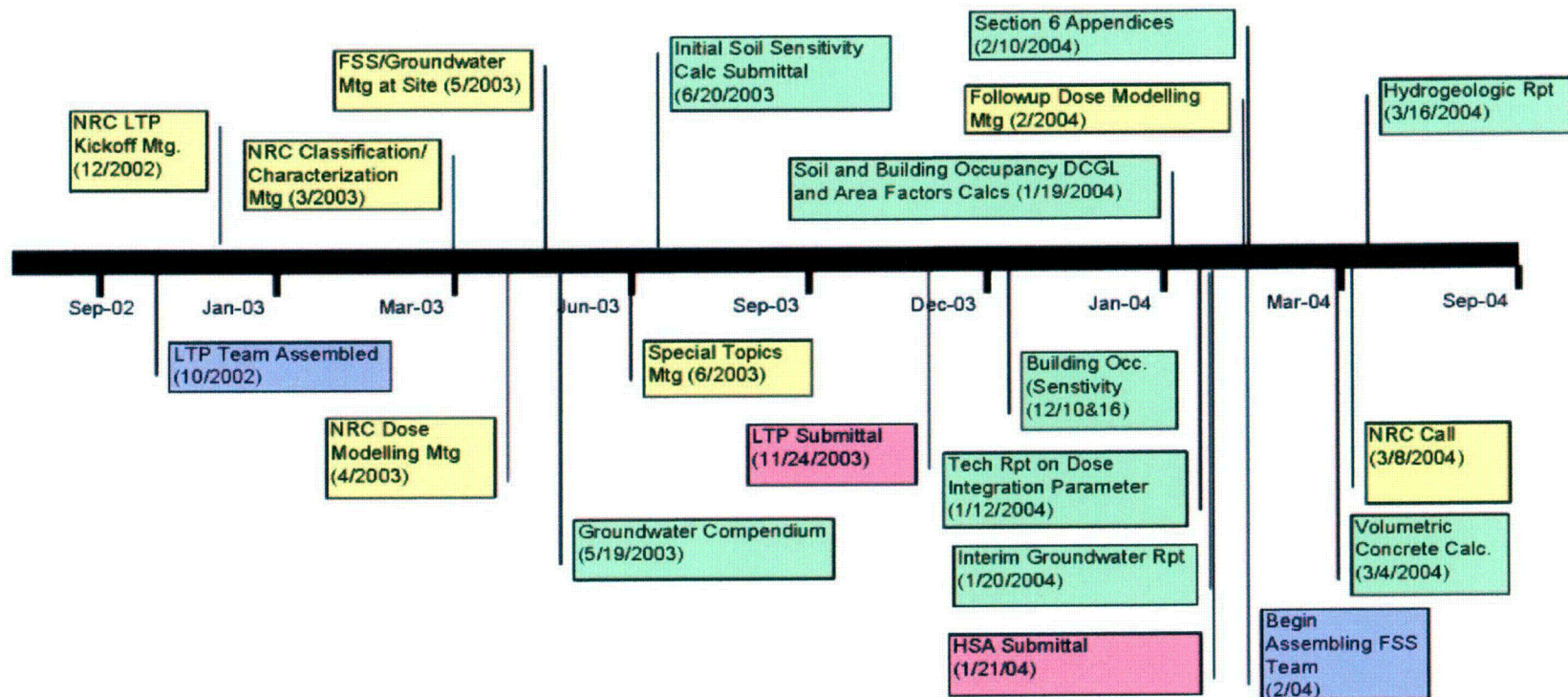


# Update of Decommissioning Activities

- Cutting of the Metal Vapor Container



# Timeline of LTP Activities



---

# License Termination Plan

- General Information
  - Summary of Historical Site Assessment
    - Identification of survey areas
    - Initial classification of survey areas
    - Radionuclides of interest
    - Known groundwater information
    - Areas of additional investigation
      - Subsurface areas
      - Groundwater
  - Remaining Decommissioning Activities and Remediation Plans
-

---

# License Termination Plan (Con't)

- Dose Modeling Methodology
    - Criteria, scenarios, and codes used
    - Calculations sent separately
    - Input/output details provided in appendices
  - Final Status Survey Methodology
    - Follows MARSSIM
    - Groundwater and subsurface considerations
  - Financial Information
  - Supplement to the Environmental Report
-



---

# Dose Modeling Calculations

- Calculations provided:
  - For soil and building surfaces:
    - Parameter sensitivity
    - Parameter values
    - DCGLs
    - Area Factors
  - For concrete:
    - Correlate residual radioactivity and dose
    - Establish DCGL corresponding to 0.5 mrem/yr
- LTP Section 6 Appendices Summarize Information from Calcs (Inputs and Results) for Soil and Building Surfaces

---

# Historical Site Assessment

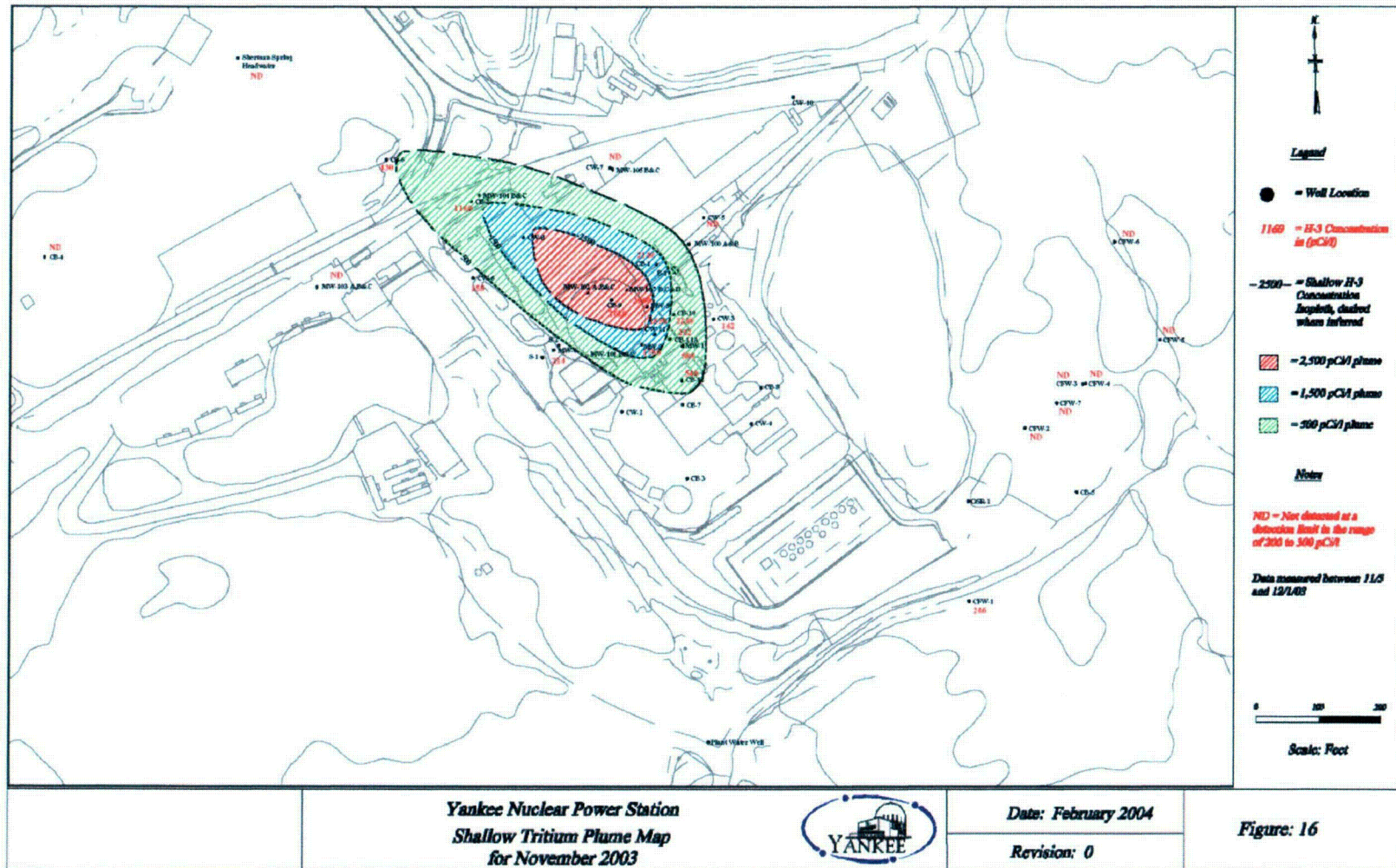
- Basis Document for Site Characterization and Survey Area Classification
  - Describes:
    - Operational history and impacts
    - Events and spills
    - Potential for subsurface contamination
    - Past remediation efforts
    - Underground systems
  - Summarizes:
    - Historical sample data
    - Statistics on open land area data (SOF, mean, median, std dev)
  - Includes CD with Scanned References (Organized by Survey Area)
-

---

# Hydrogeologic Report of 2003 Supplemental Investigation

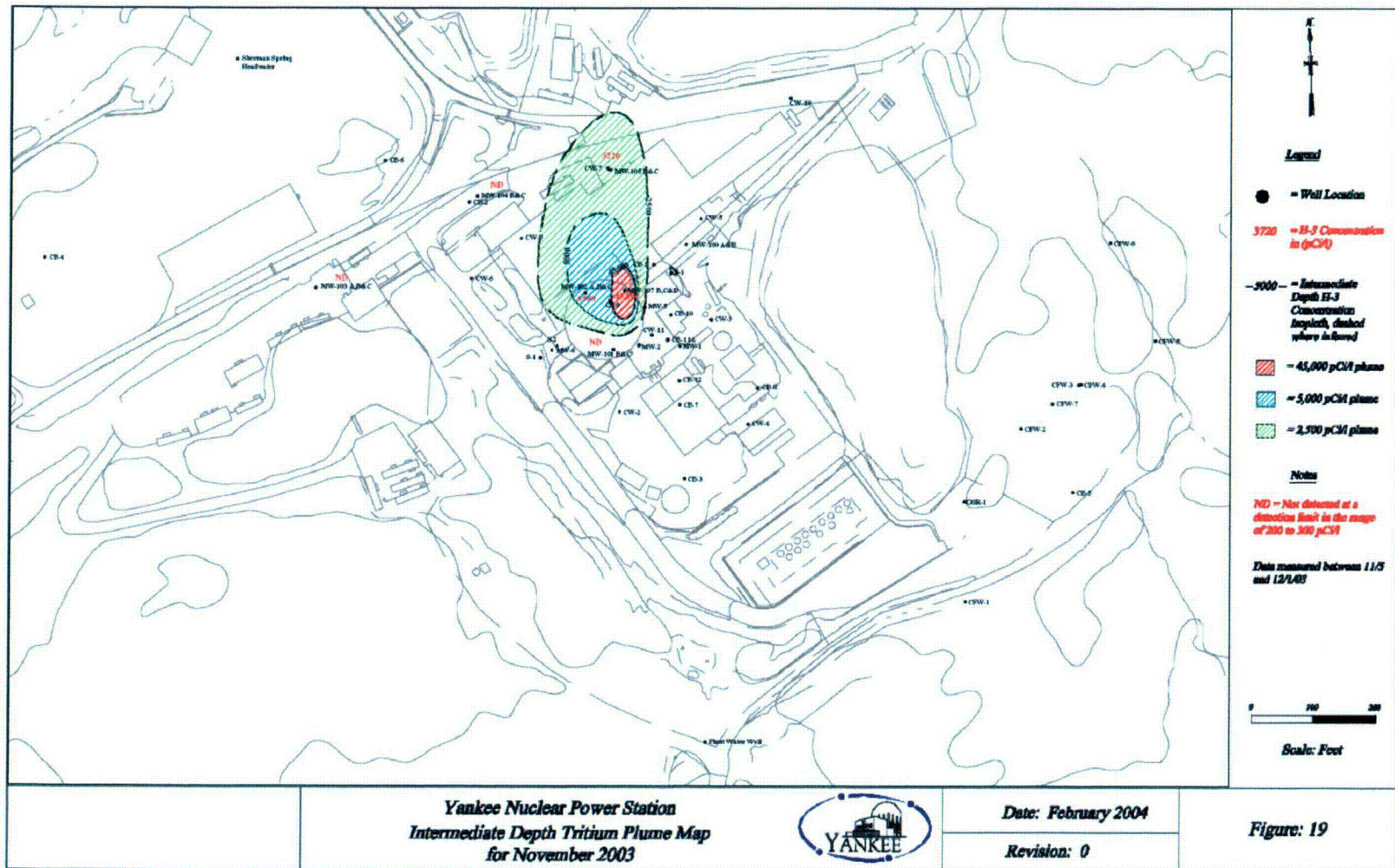
- Supplements “3<sup>rd</sup> Quarter Interim Groundwater Report”
  - Summarizes Well Drilling Methods and Construction
  - Identifies Local Stratigraphy
  - Discusses Hydraulic Gradient and Groundwater Flow
  - Identifies Sample Analyses Performed
    - Gamma spec
    - Tritium and gross alpha/beta
    - Hard-to-detects (including transuranics)
  - Discusses Sample Analyses Results
    - Tritium only plant-related radionuclides identified
  - Provides Updated Tritium Plume Maps
  - Describes Three-Dimensional Investigation
-

# Shallow Tritium Plume (Nov. 2003)

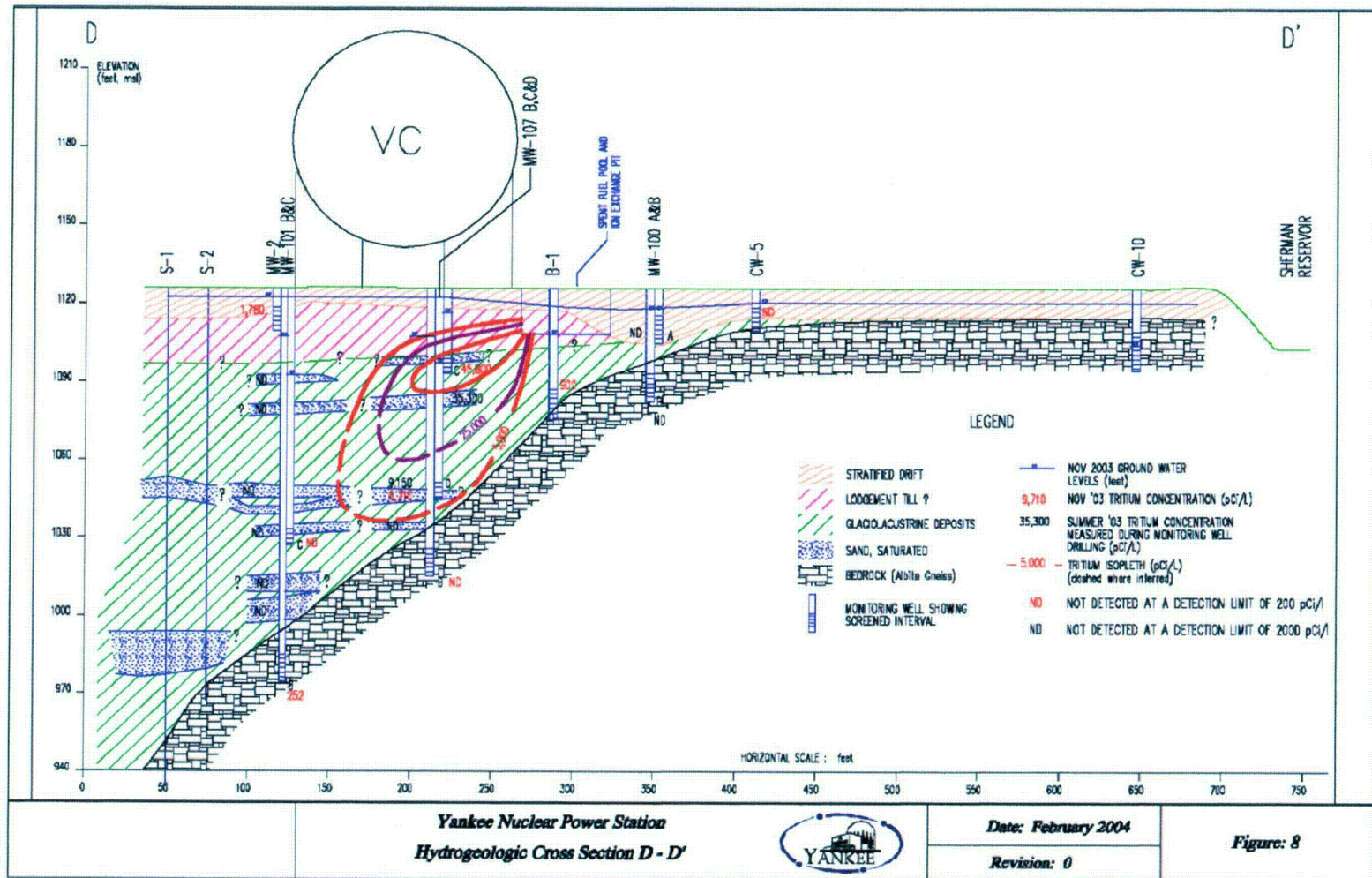




# Intermediate Tritium Plume (Nov. 2003)



# Three-Dimensional Investigation



---

# Related Activities - 2004

- FSS Activities

- Assembling FSS staff
- Developing FSS plans and procedures
- Considering methodology to survey excavations

- Site Closure Project Plan

- PCB Remediation of Sherman Reservoir

- Continued Stakeholder and Community Outreach

---

# Future Communications with NRC

- Regular Meetings
- Periodic Calls
- Early Identification of Concerns
- Path to Close Issues Before RAI Issuance