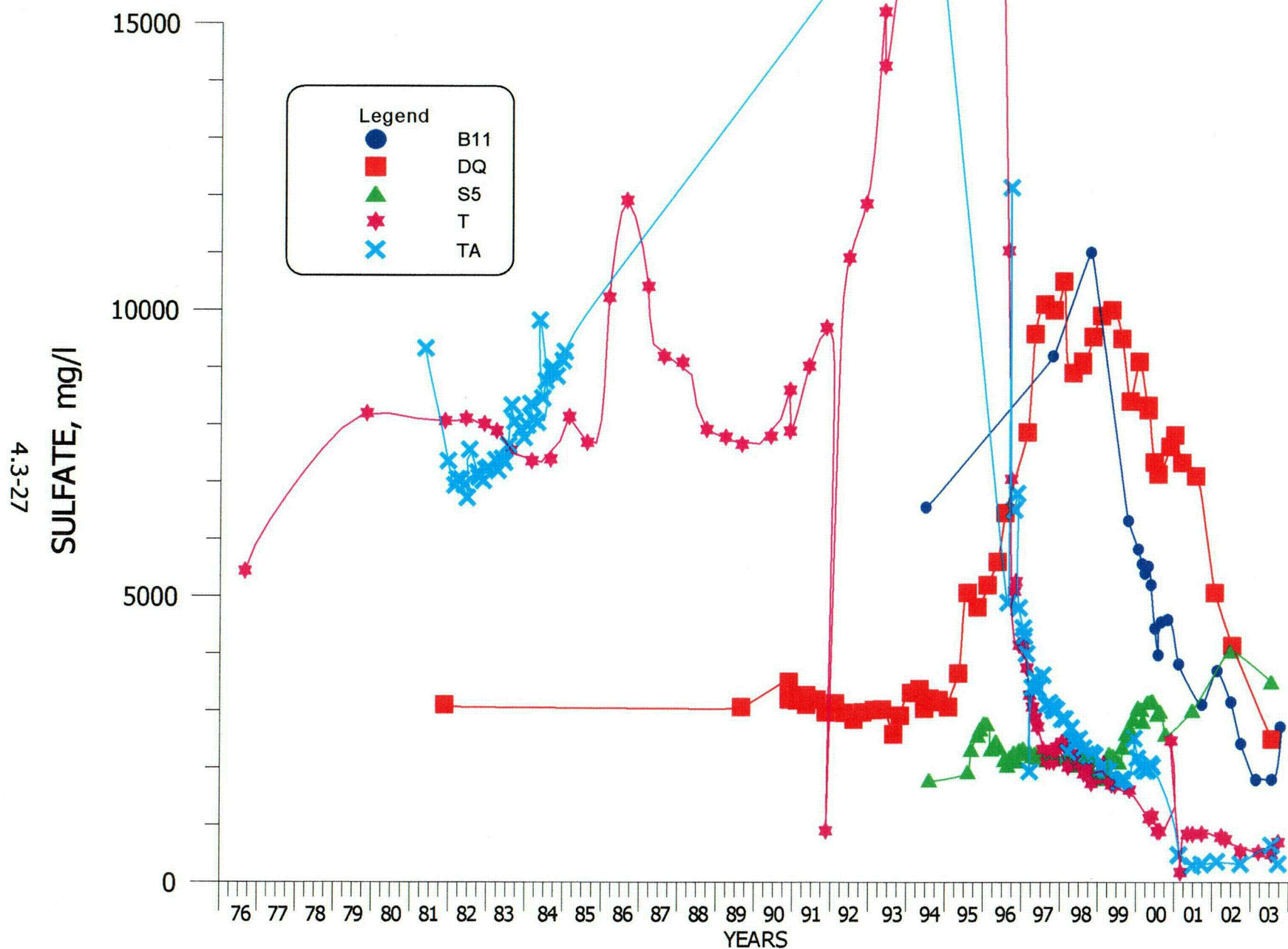
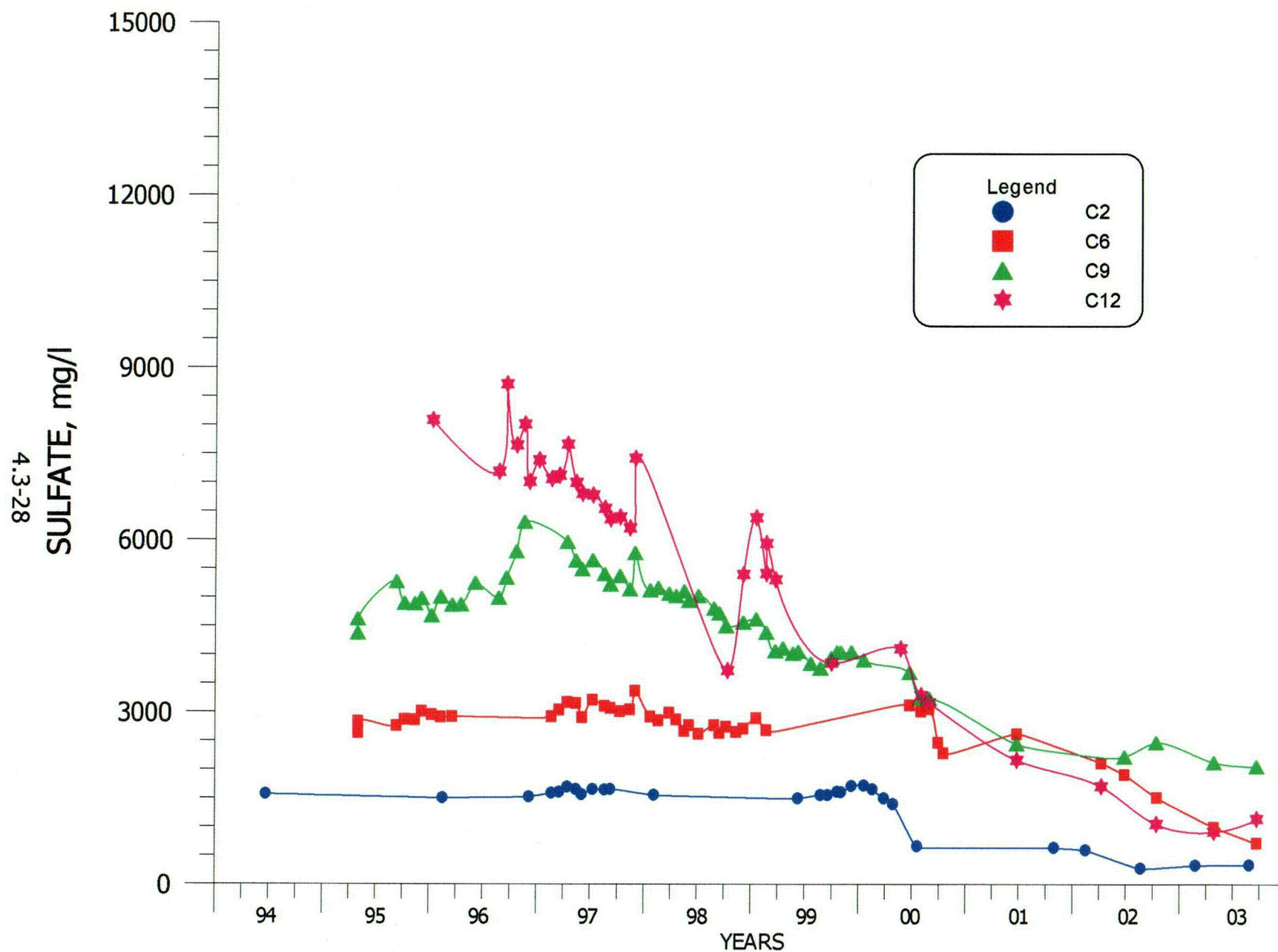


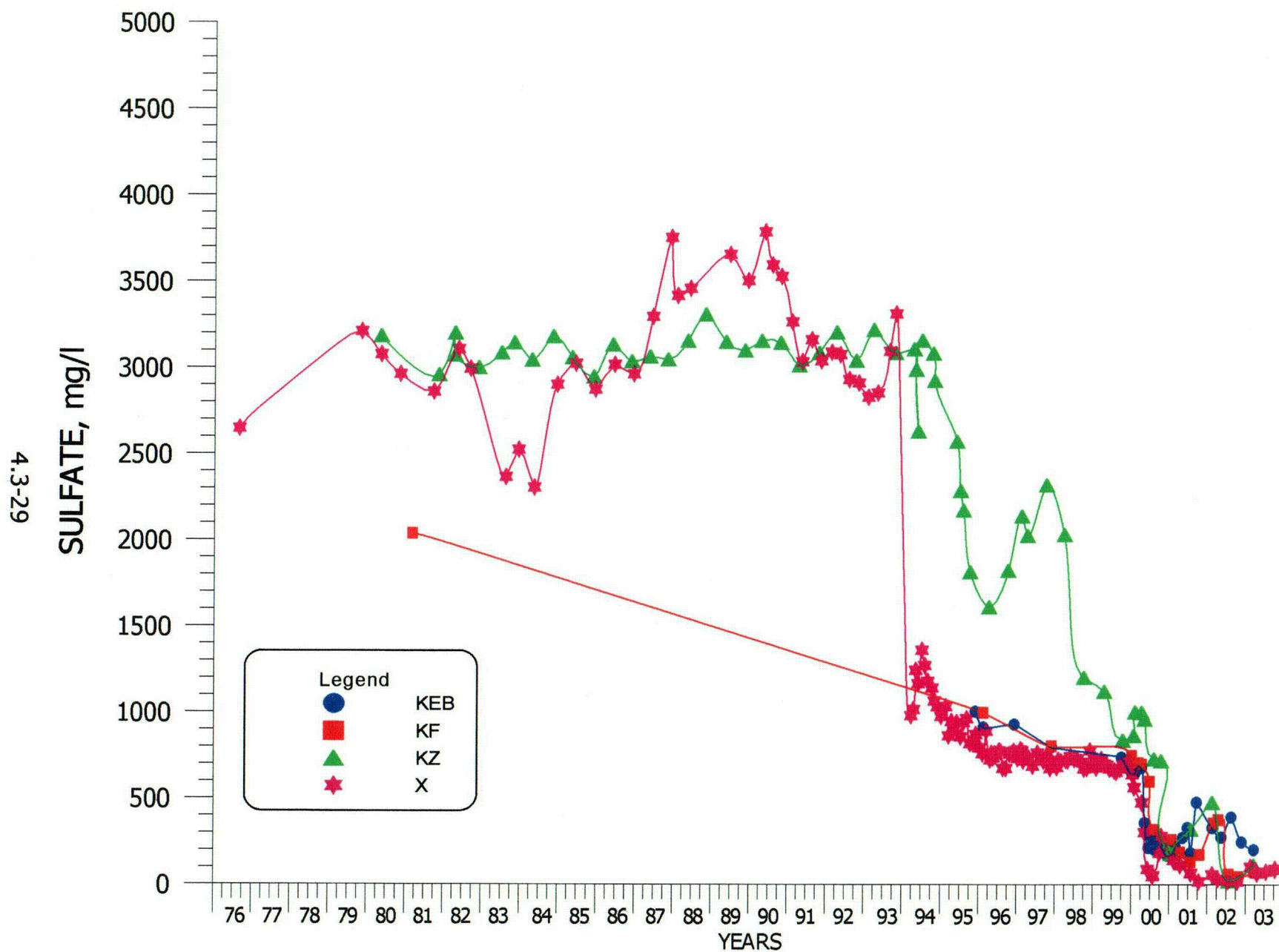
**FIGURE 4.3-6. SULFATE CONCENTRATIONS FOR WELLS B, BP, D1 AND M5.**



**FIGURE 4.3-7. SULFATE CONCENTRATIONS FOR WELLS B11, DQ, S5, T AND TA.**

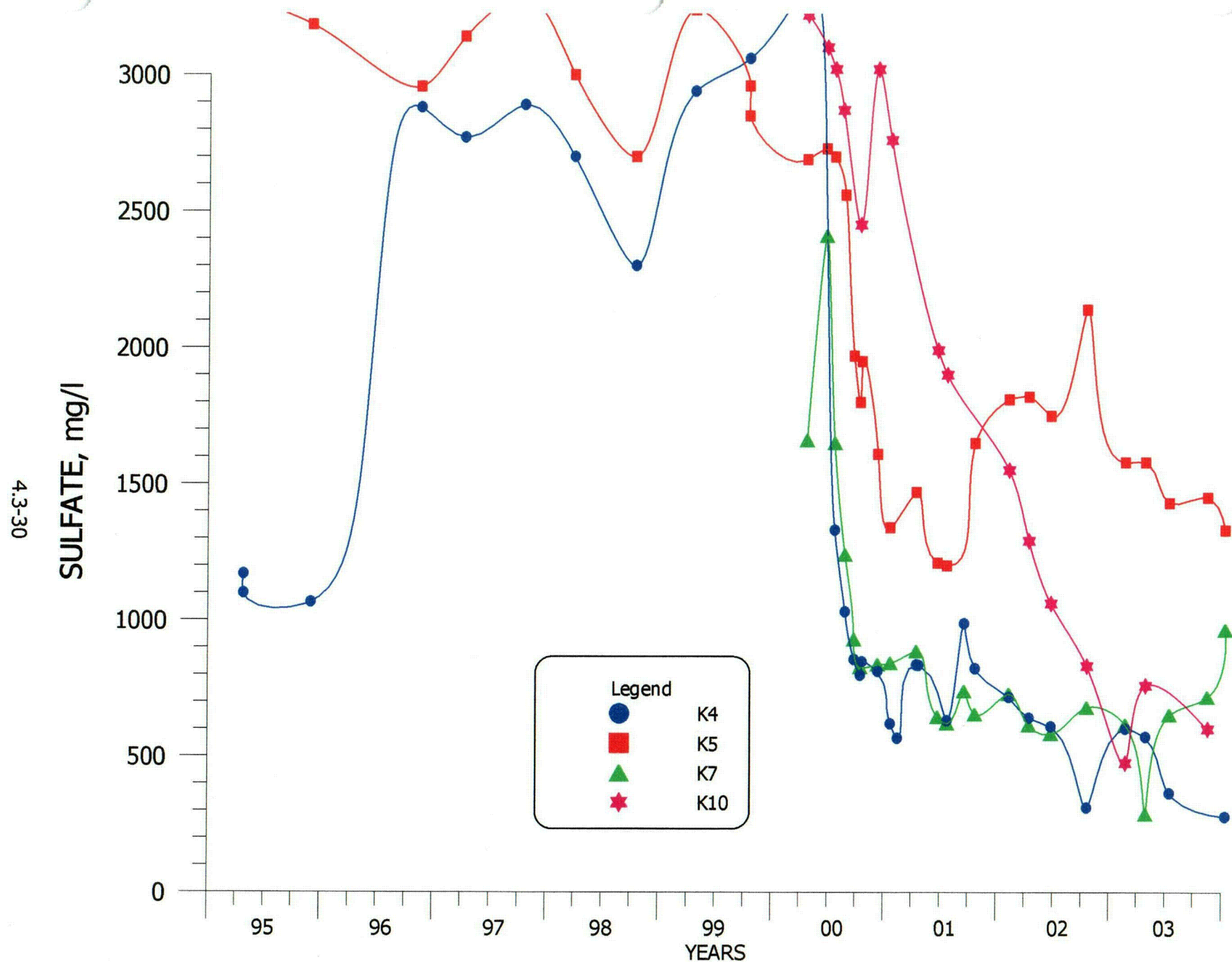


**FIGURE 4.3-8. SULFATE CONCENTRATIONS FOR WELLS C2, C6, C9 AND C12.**



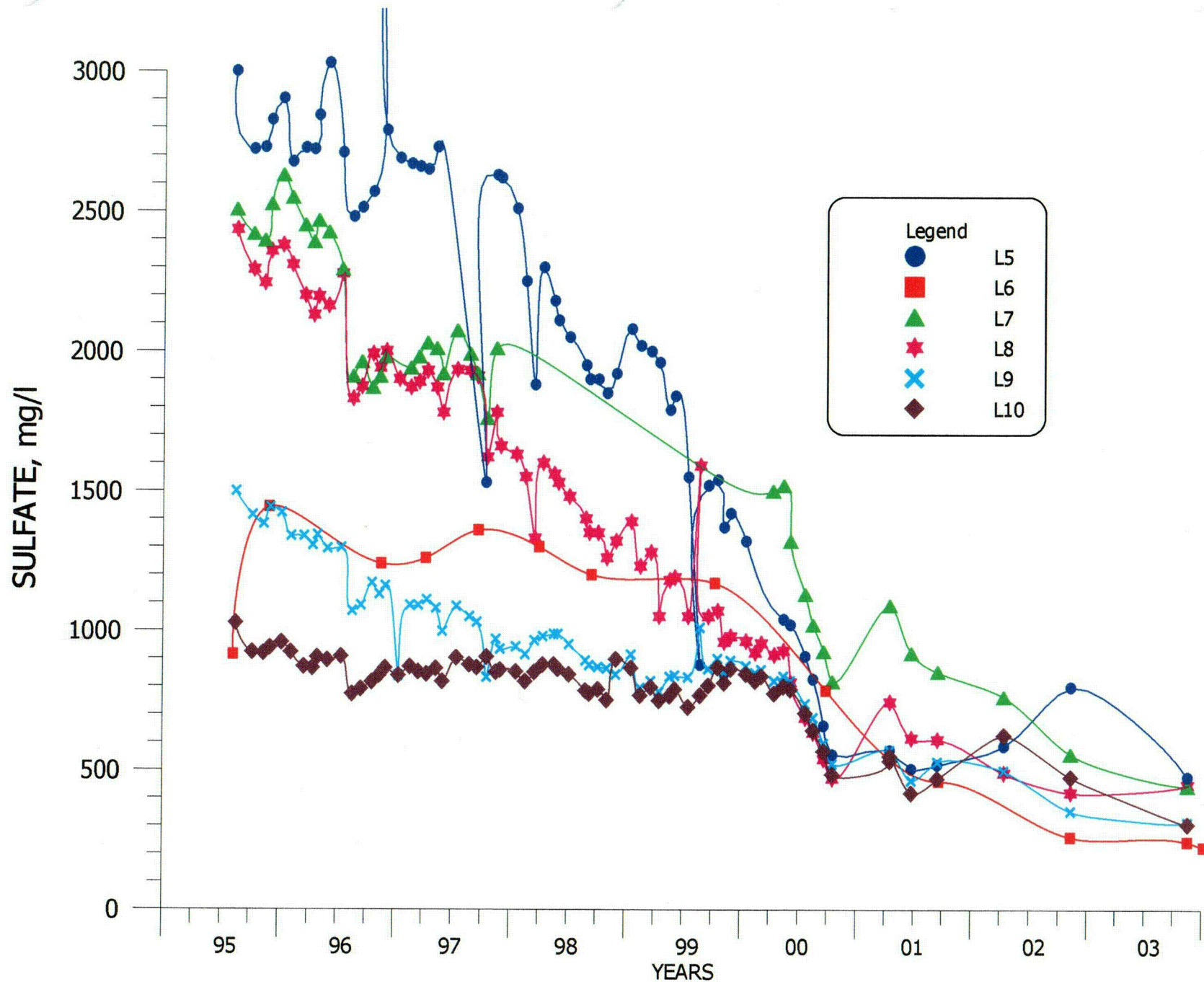
**FIGURE 4.3-9. SULFATE CONCENTRATIONS FOR WELLS KEB, KF, KZ AND X.**



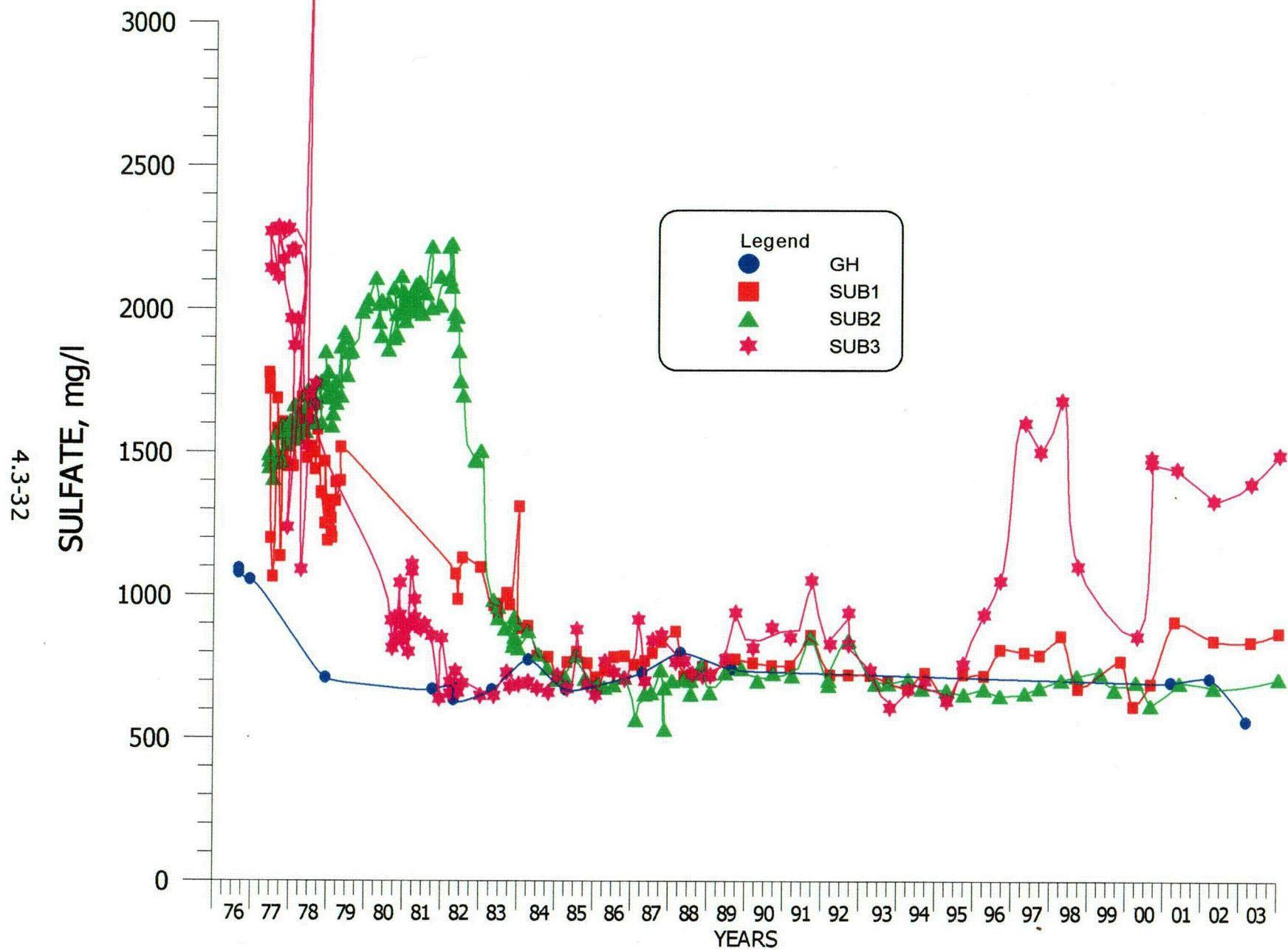


**FIGURE 4.3-10. SULFATE CONCENTRATIONS FOR WELLS K4, K5, K7 AND K10.**

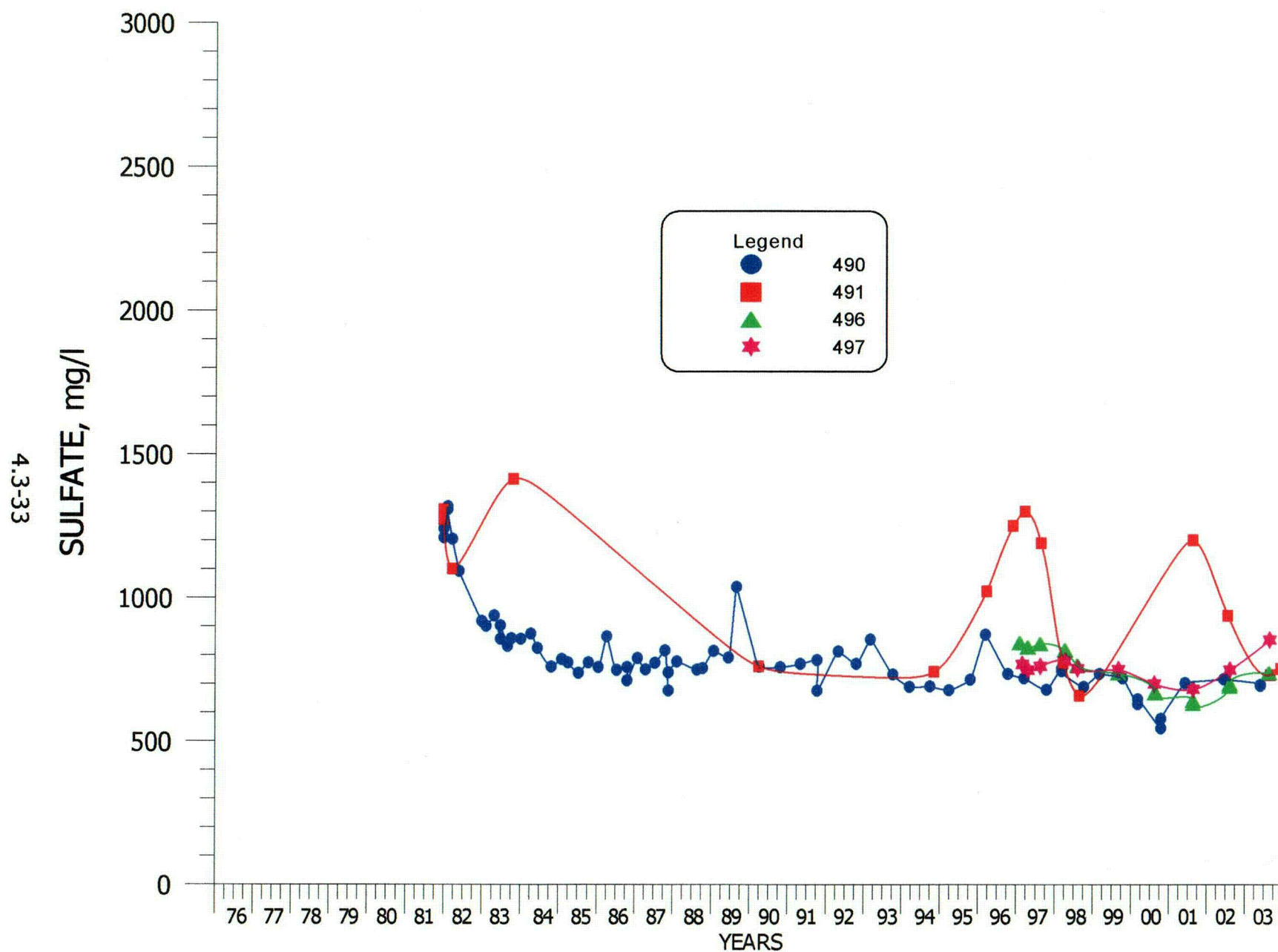
4.3-31



**FIGURE 4.3-11. SULFATE CONCENTRATIONS FOR WELLS L5, L6, L7, L8, L9 AND L10.**

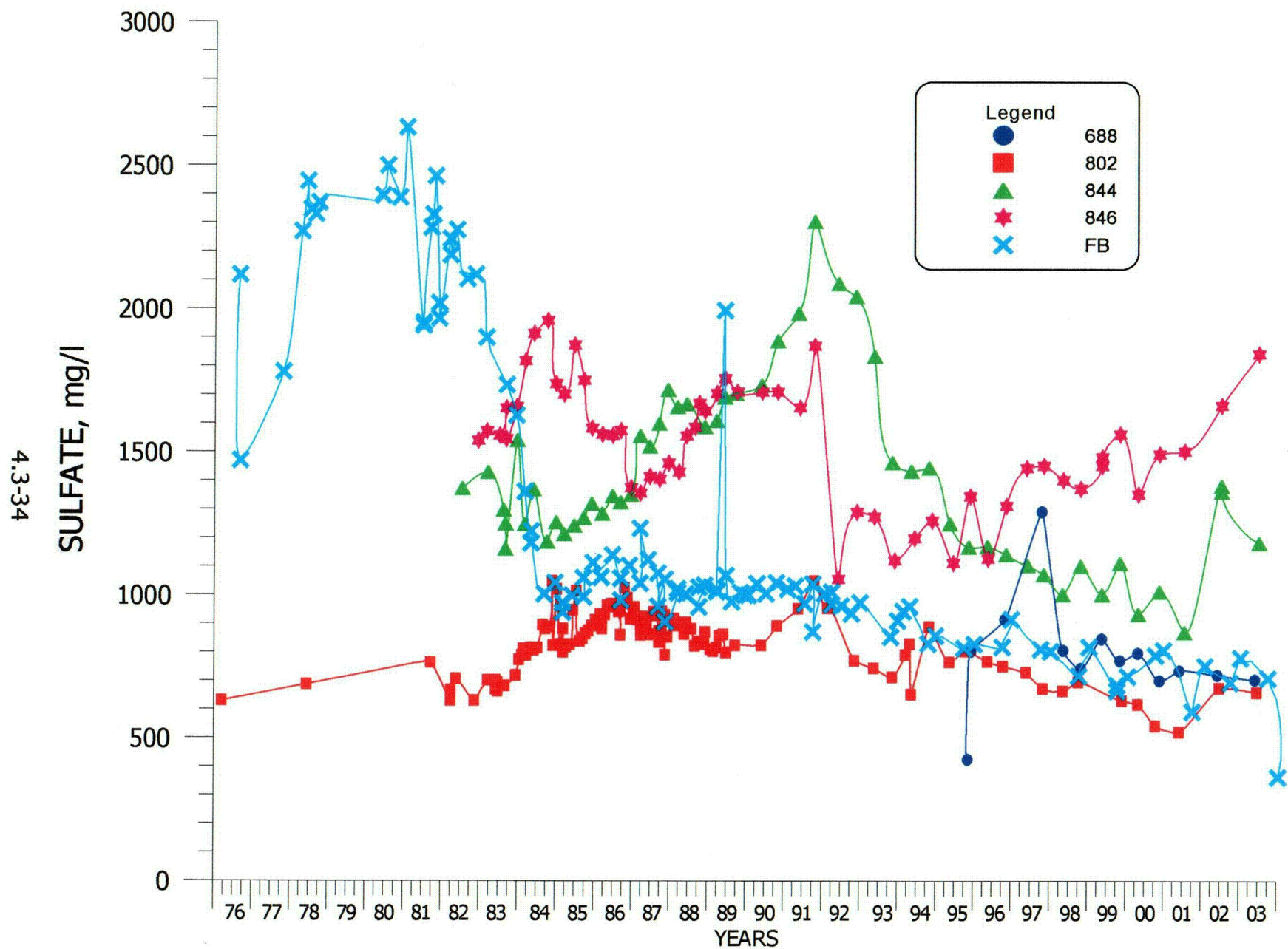


**FIGURE 4.3-12. SULFATE CONCENTRATIONS FOR WELLS GH, SUB1, SUB2 AND SUB3.**

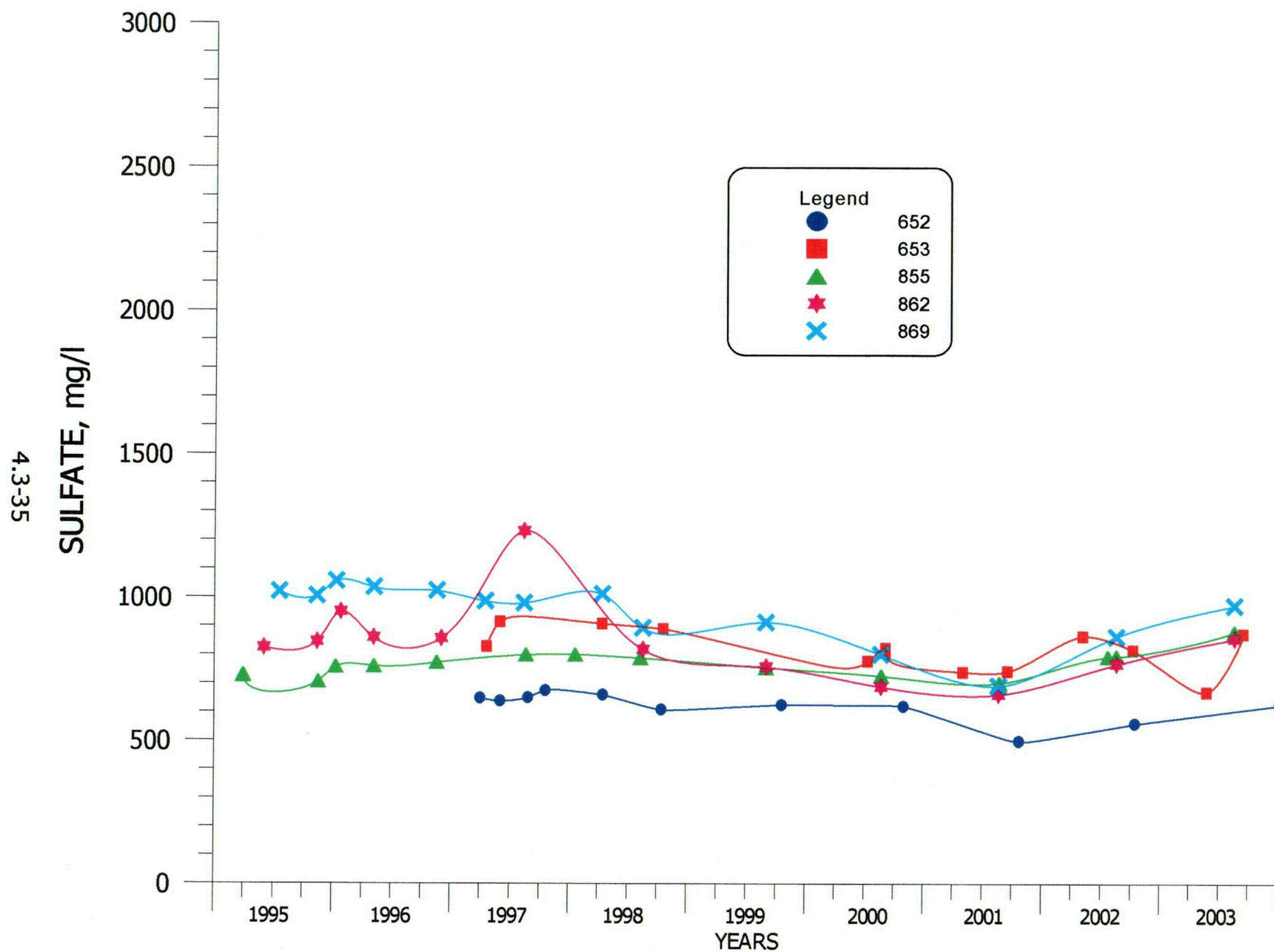


**FIGURE 4.3-13. SULFATE CONCENTRATIONS FOR WELLS 490, 491, 496 AND 497.**

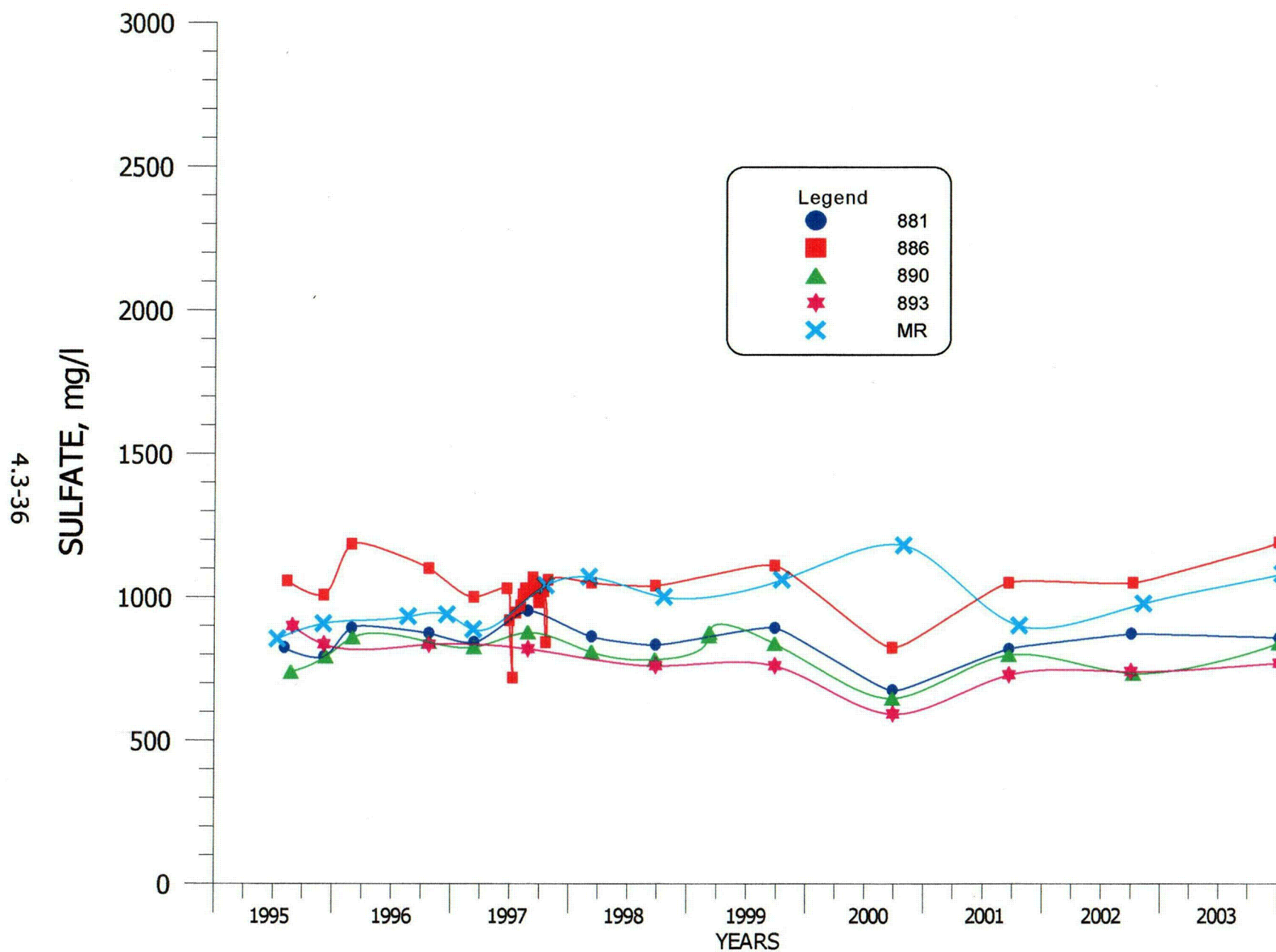




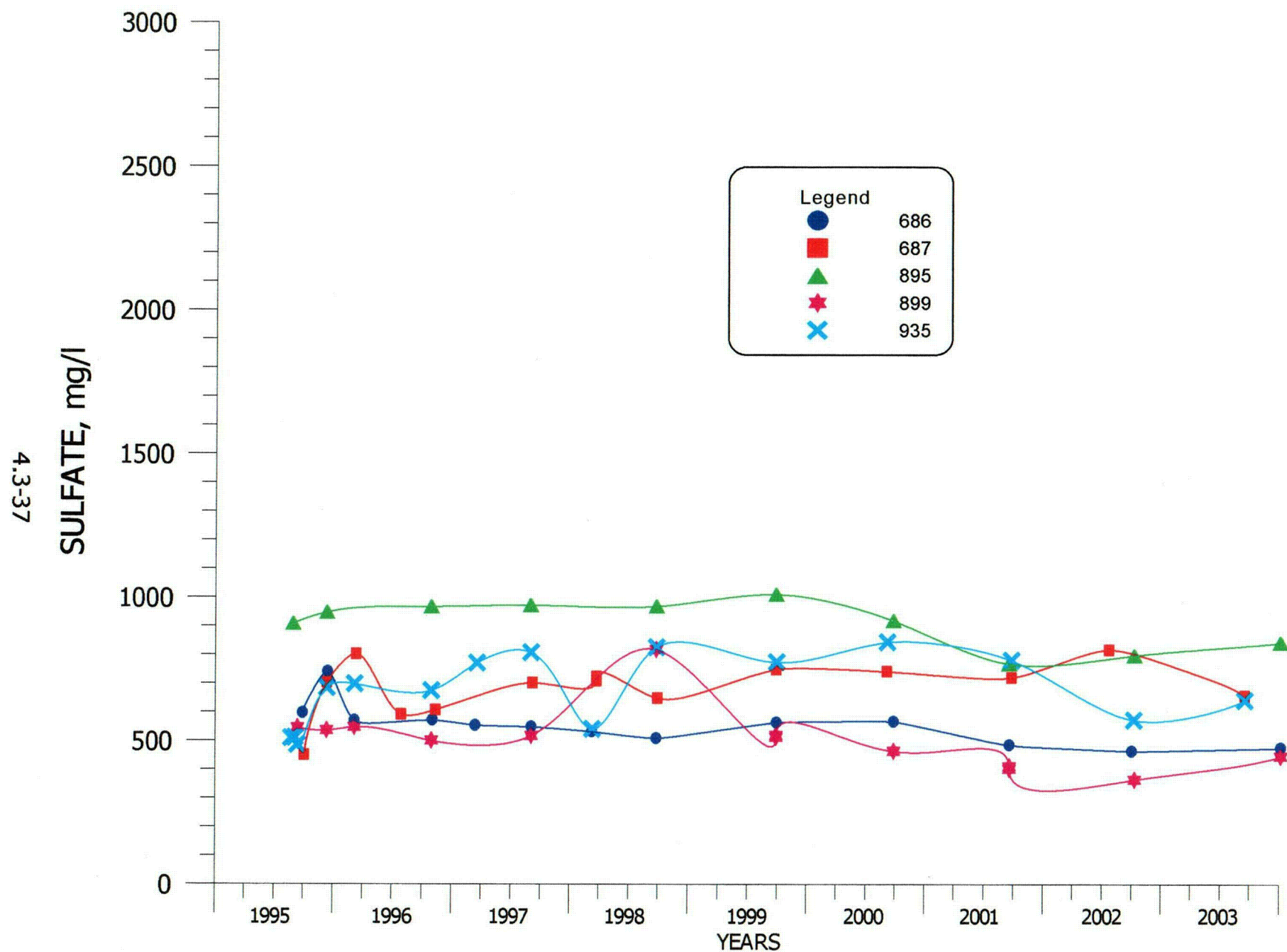
**FIGURE 4.3-14. SULFATE CONCENTRATIONS FOR WELLS 688, 802, 844, 846 AND FB.**



**FIGURE 4.3-15. SULFATE CONCENTRATIONS FOR WELLS 652, 653, 855, 862 AND 869.**

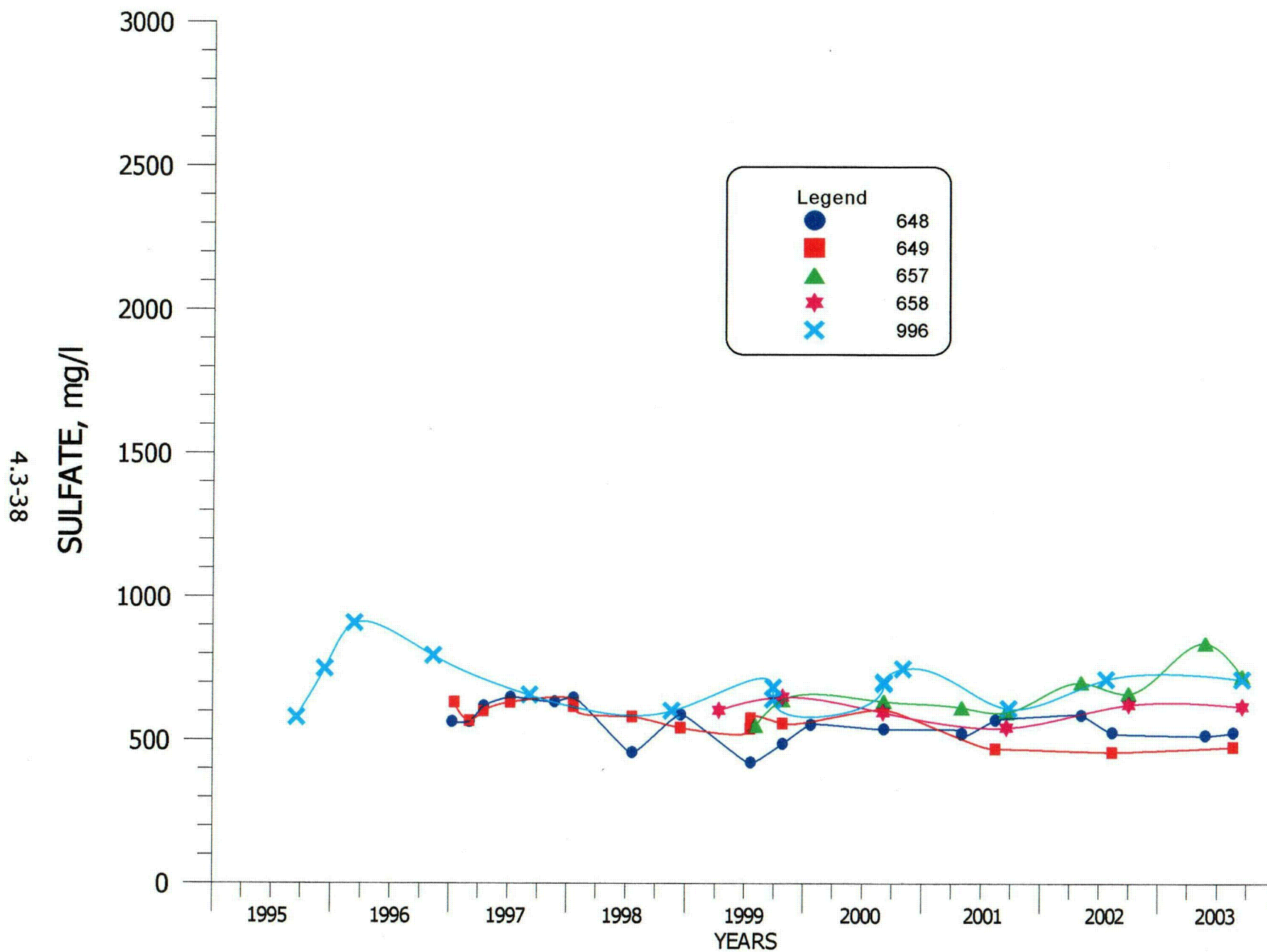


**FIGURE 4.3-16. SULFATE CONCENTRATIONS FOR WELLS 881, 886, 890, 893 AND MR.**



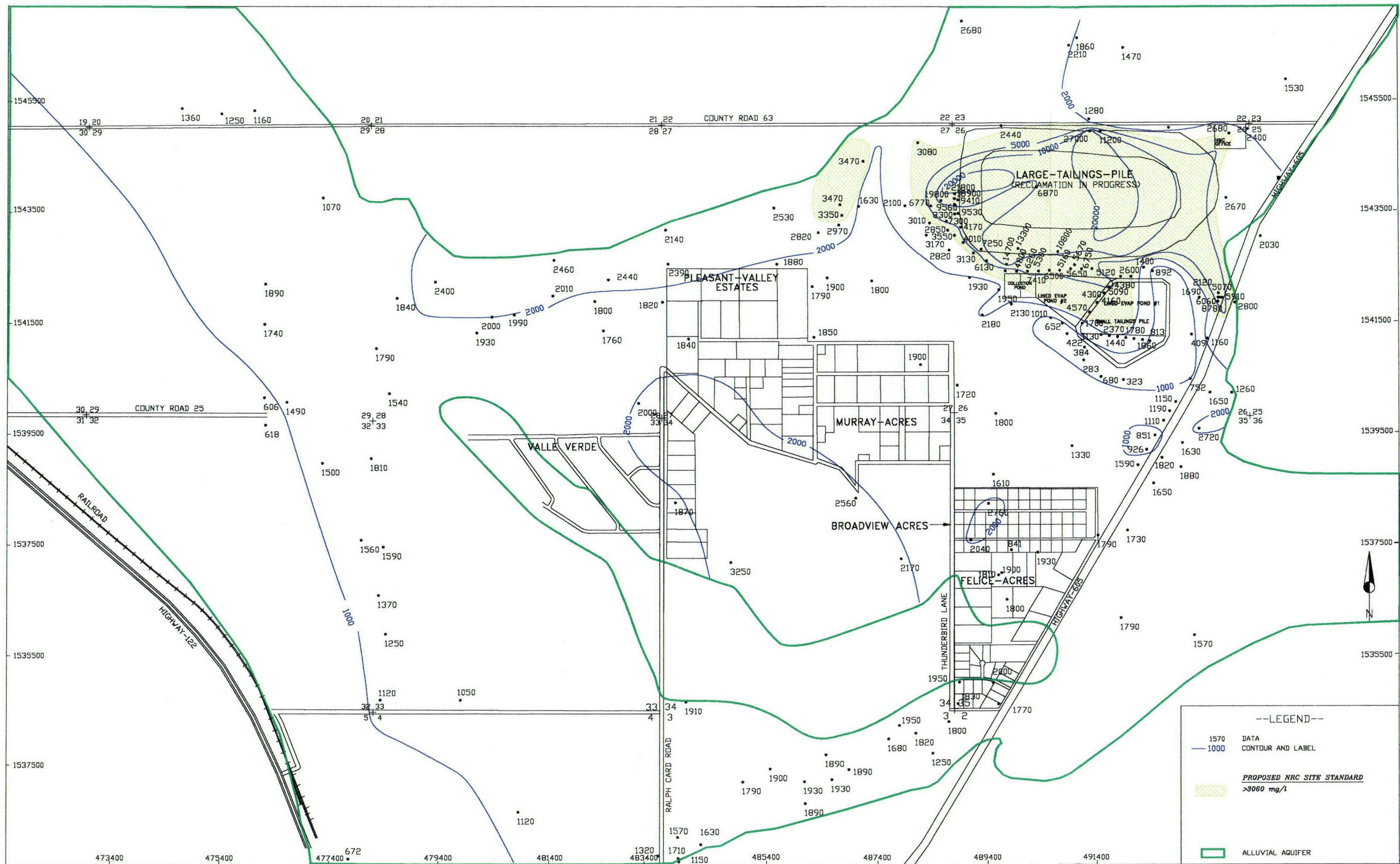
**FIGURE 4.3-17. SULFATE CONCENTRATIONS FOR WELLS 686, 687, 895, 899 AND 935.**





**FIGURE 4.3-18. SULFATE CONCENTRATIONS FOR WELLS 648, 649, 657, 658 AND 996.**





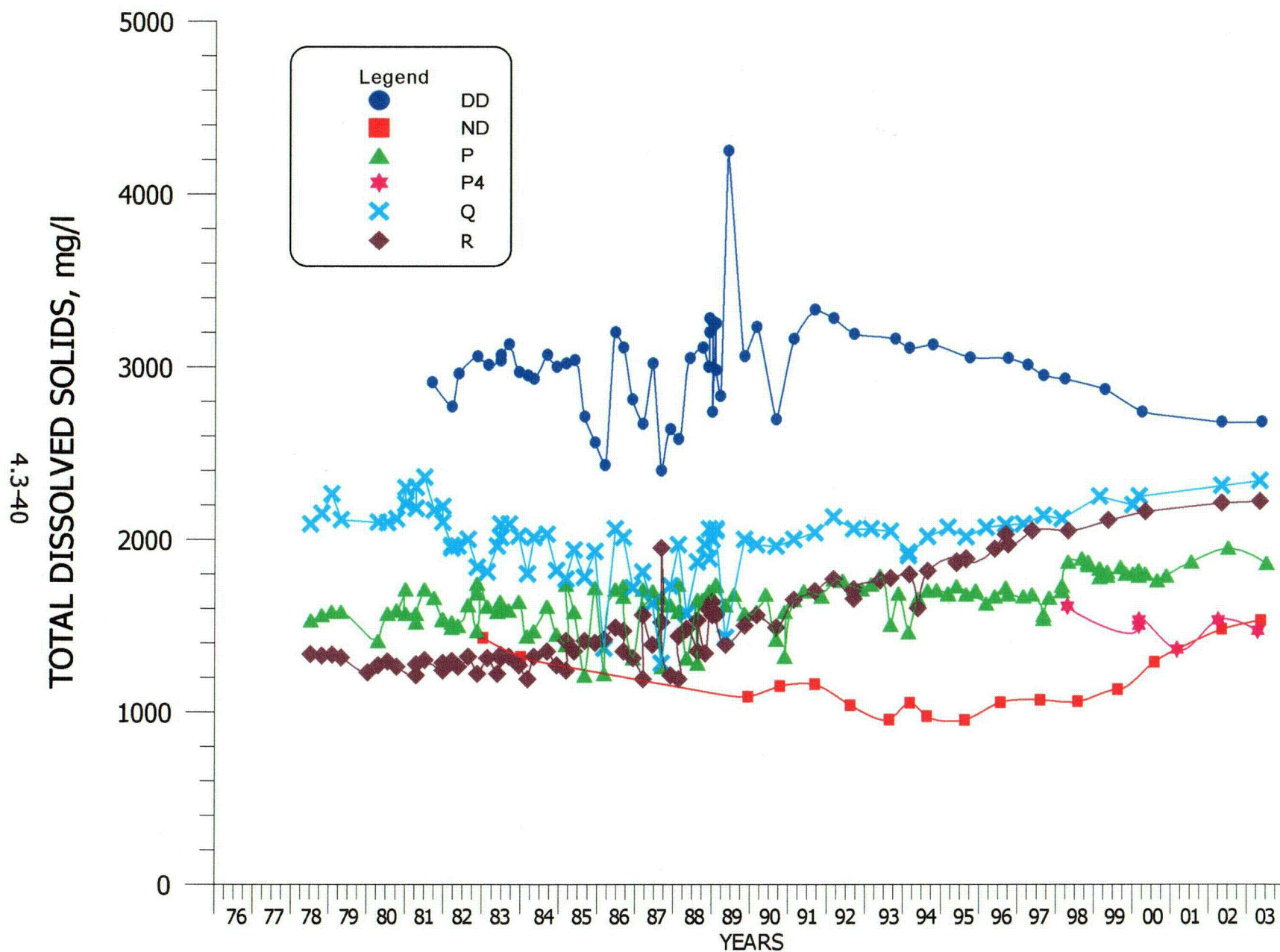
SCALE: 1"=1600'  
 C:\PROJECTS\N  
 2004-06\N-QAL03  
 DATE: 03/16/04

HOMESTAKE-MILL-AND-ADJACENT-PROPERTIES  
 GRANTS-NM-TOWNSHIP-11&12-N-RANGE-10-W

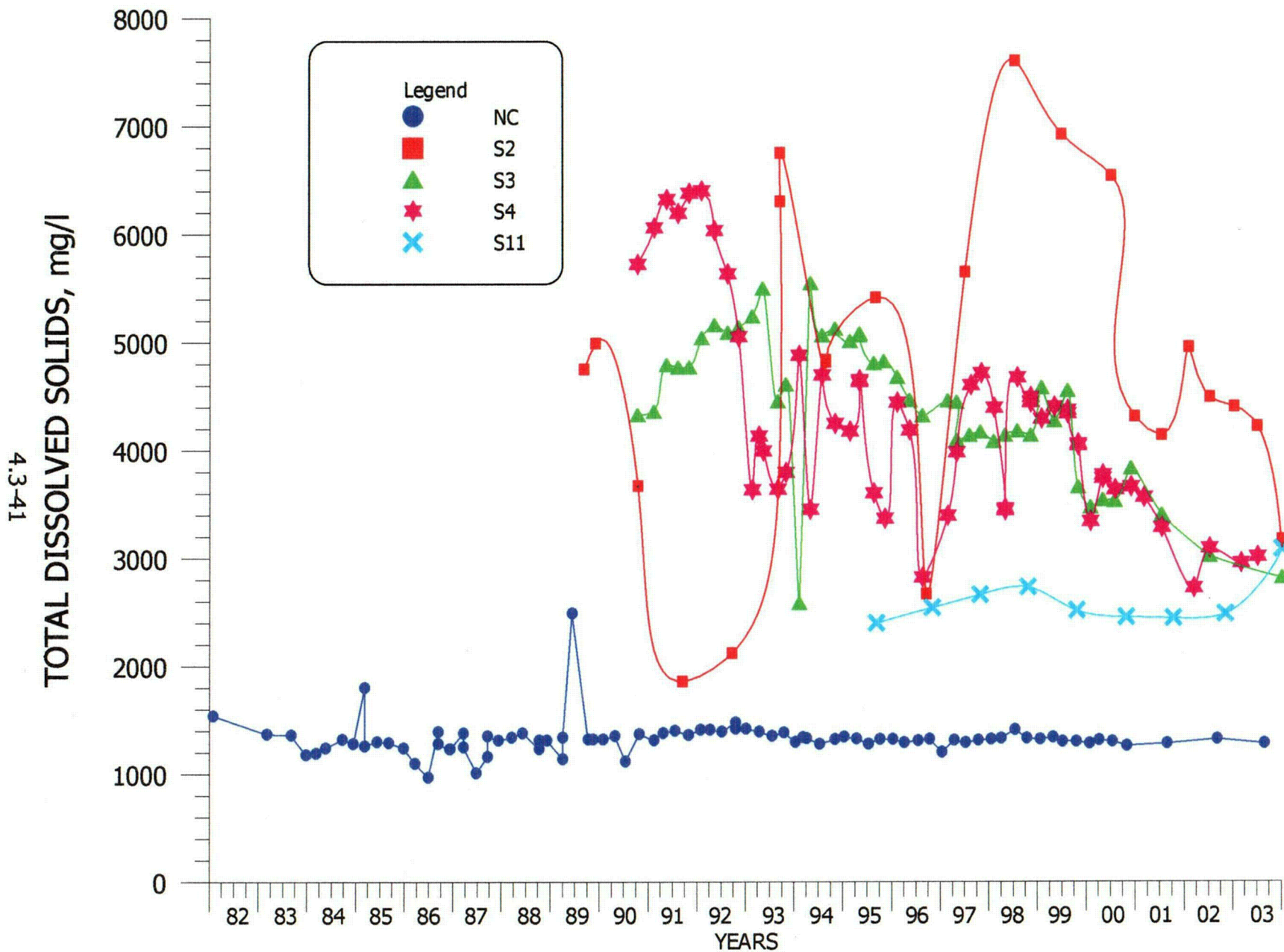
FIGURE 4.3-19. TDS CONCENTRATIONS OF THE  
 ALLUVIAL AQUIFER, 2003, mg/l

CH4



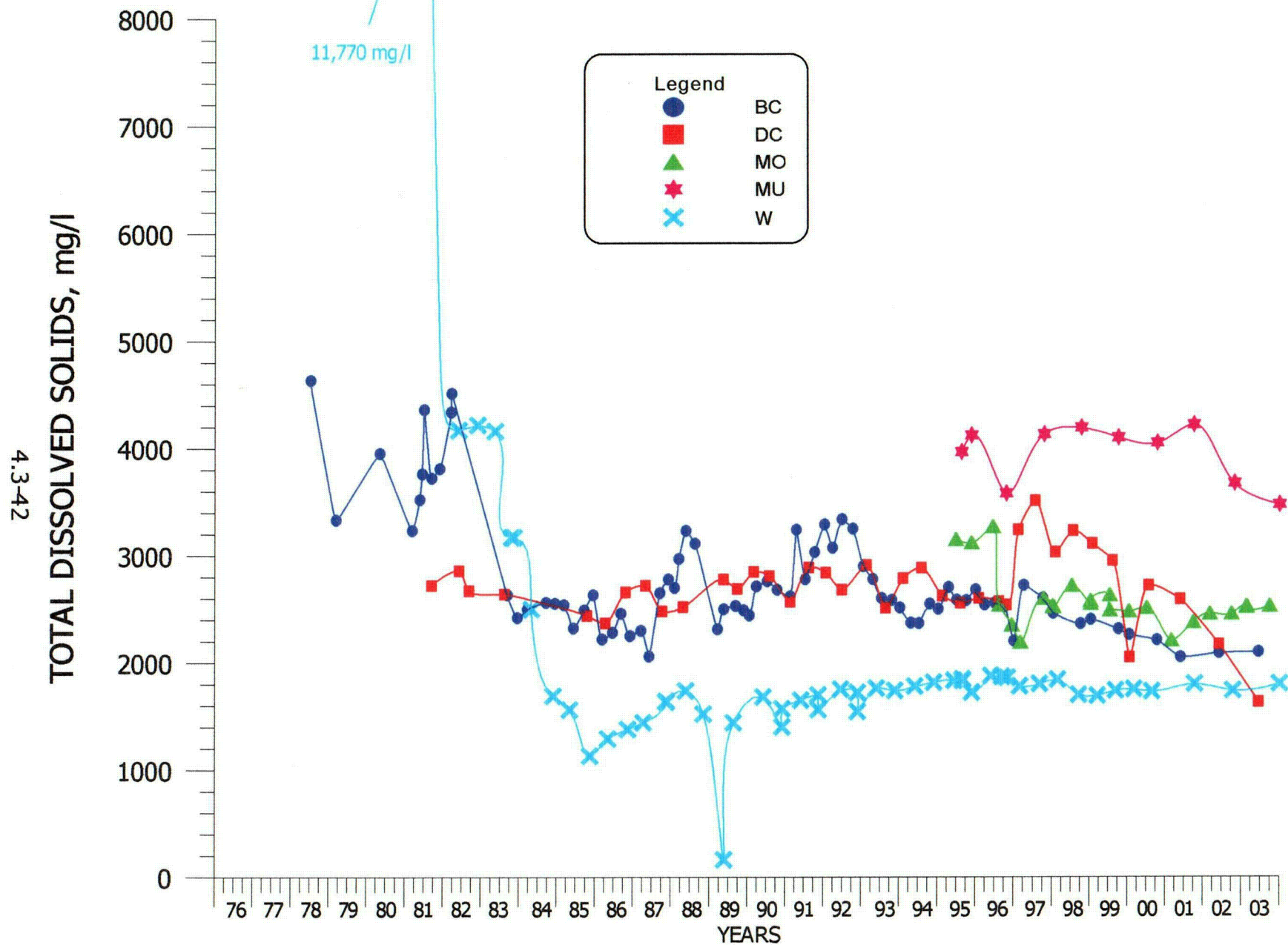


**FIGURE 4.3-20. TDS CONCENTRATIONS FOR WELLS DD, ND, P, P4, Q AND R.**

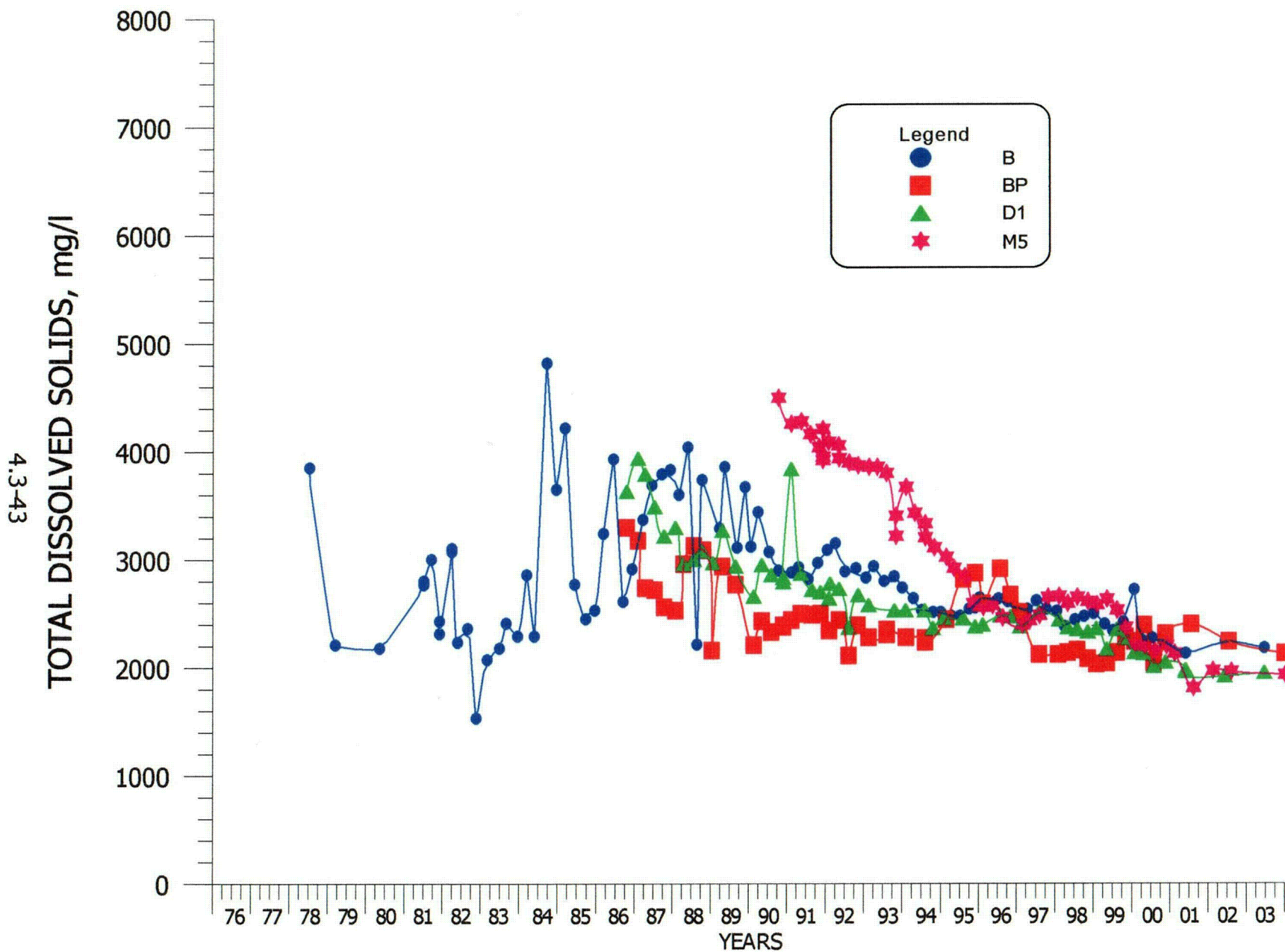


**FIGURE 4.3-21. TDS CONCENTRATIONS FOR WELLS NC, S2, S3, S4 AND S11.**

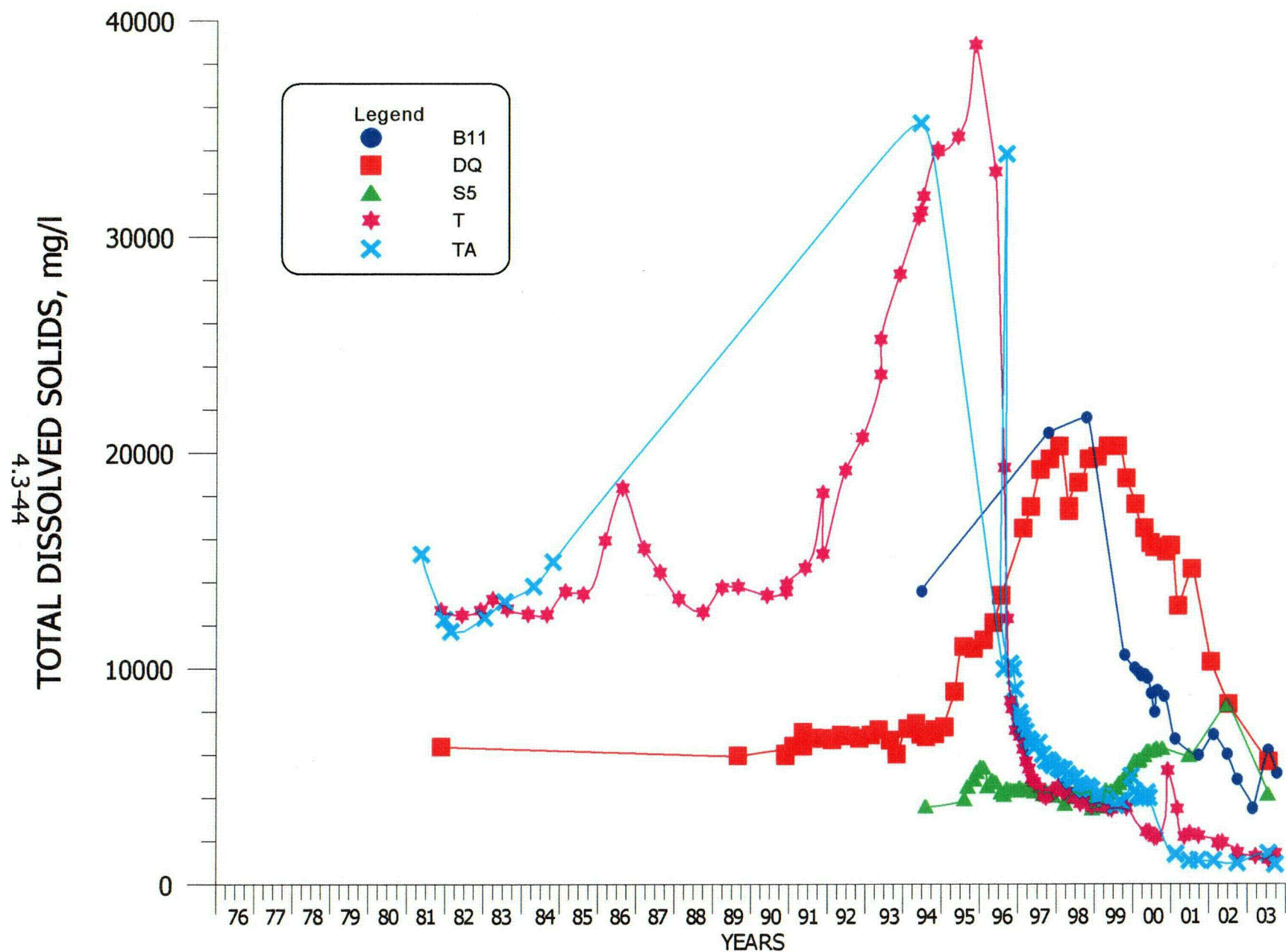




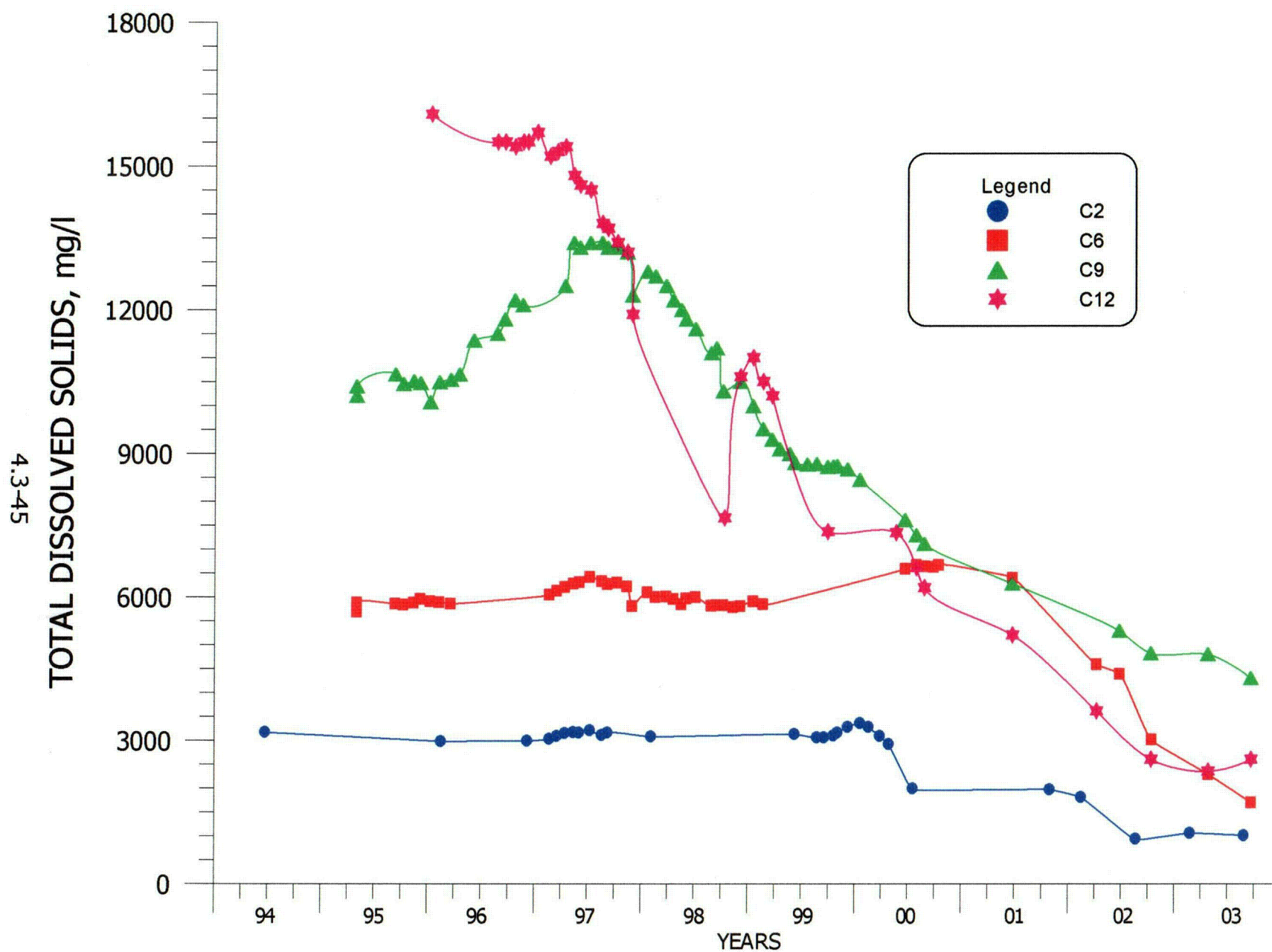
**FIGURE 4.3-22. TDS CONCENTRATIONS FOR WELLS BC, DC, MO, MU AND W.**



**FIGURE 4.3-23. TDS CONCENTRATIONS FOR WELLS B, BP, D1 AND M5.**



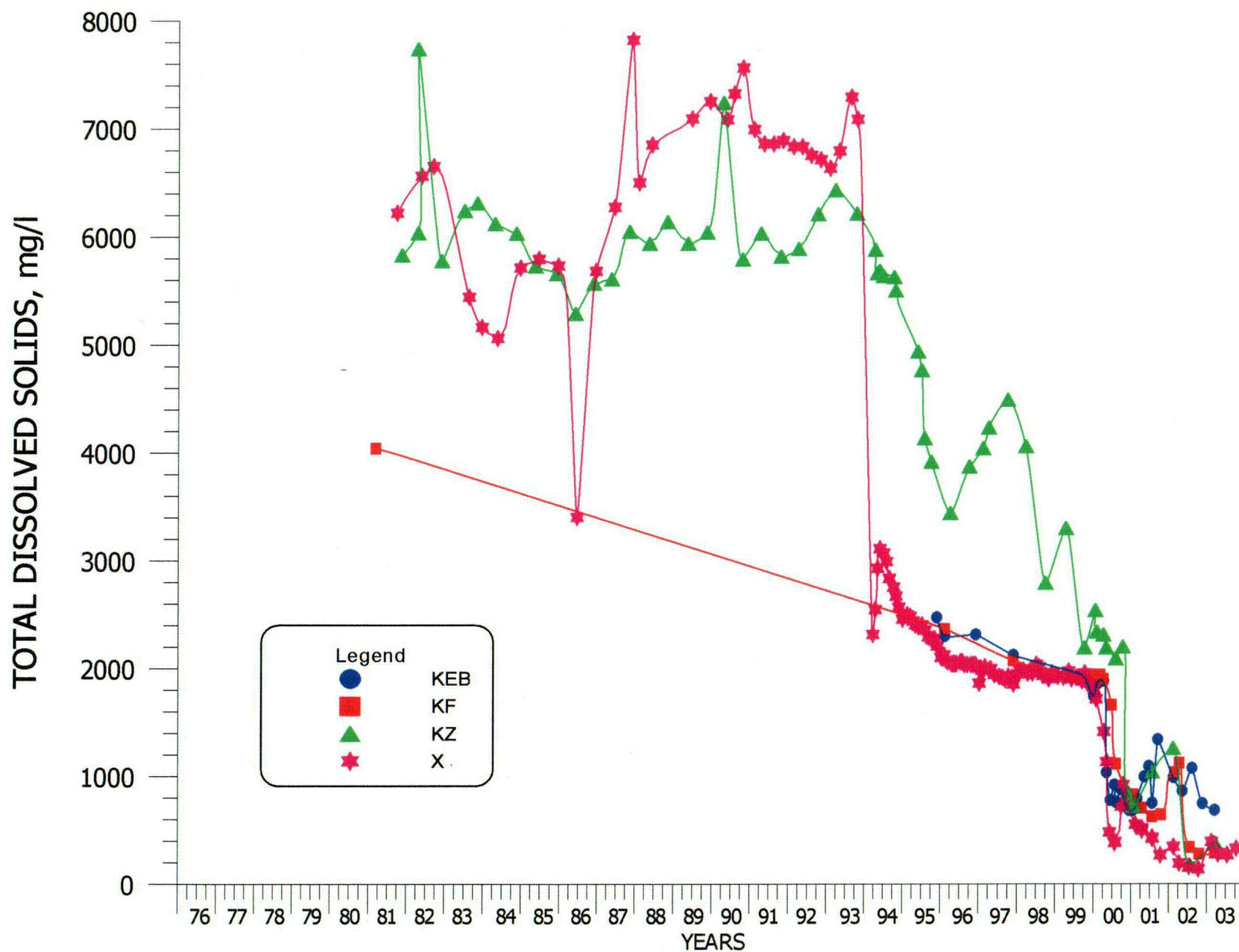
**FIGURE 4.3-24. TDS CONCENTRATIONS FOR WELLS B11, DQ, S5, T AND TA.**



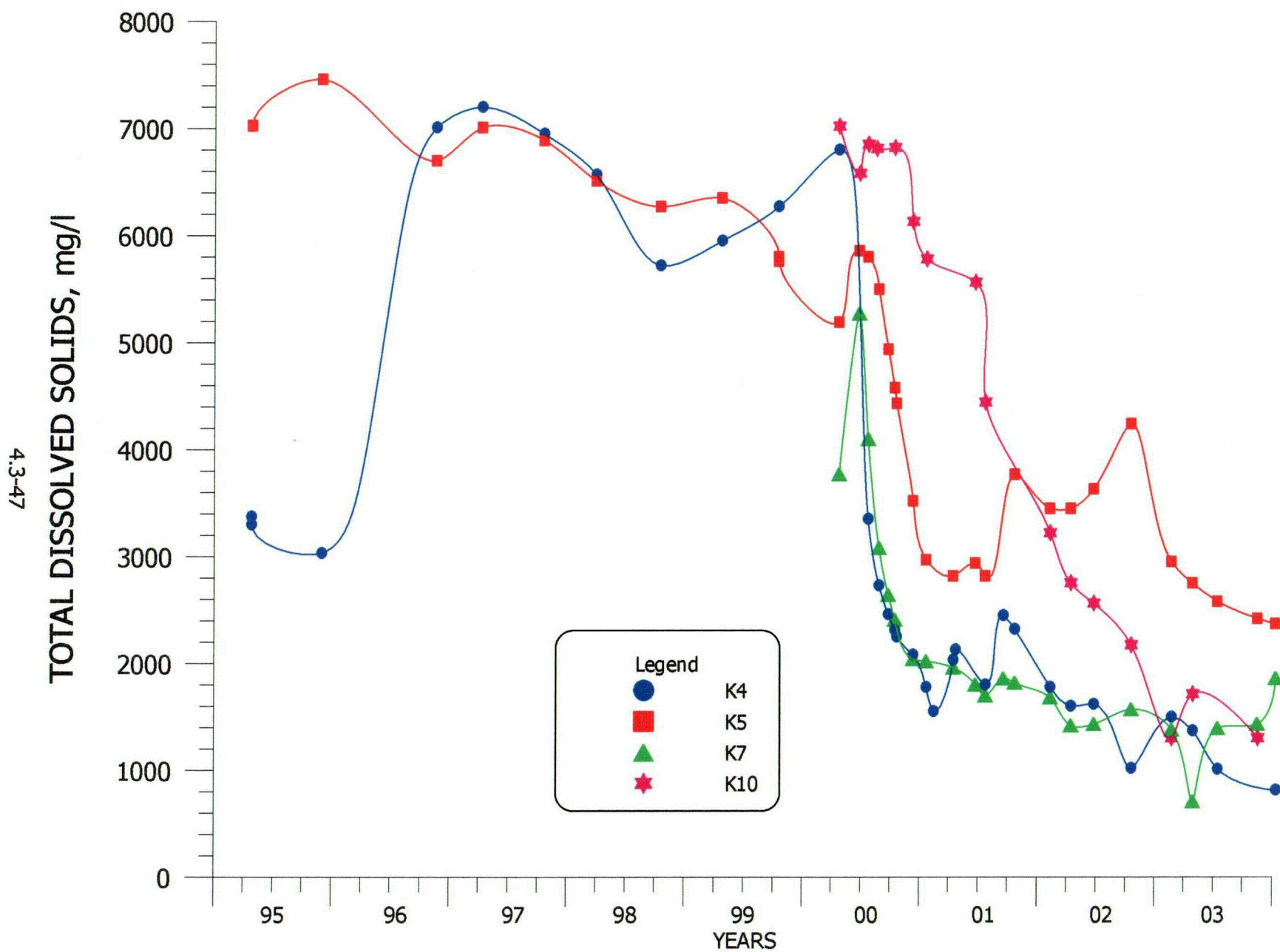
**FIGURE 4.3-25. TDS CONCENTRATIONS FOR WELLS C2, C6, C9 AND C12.**



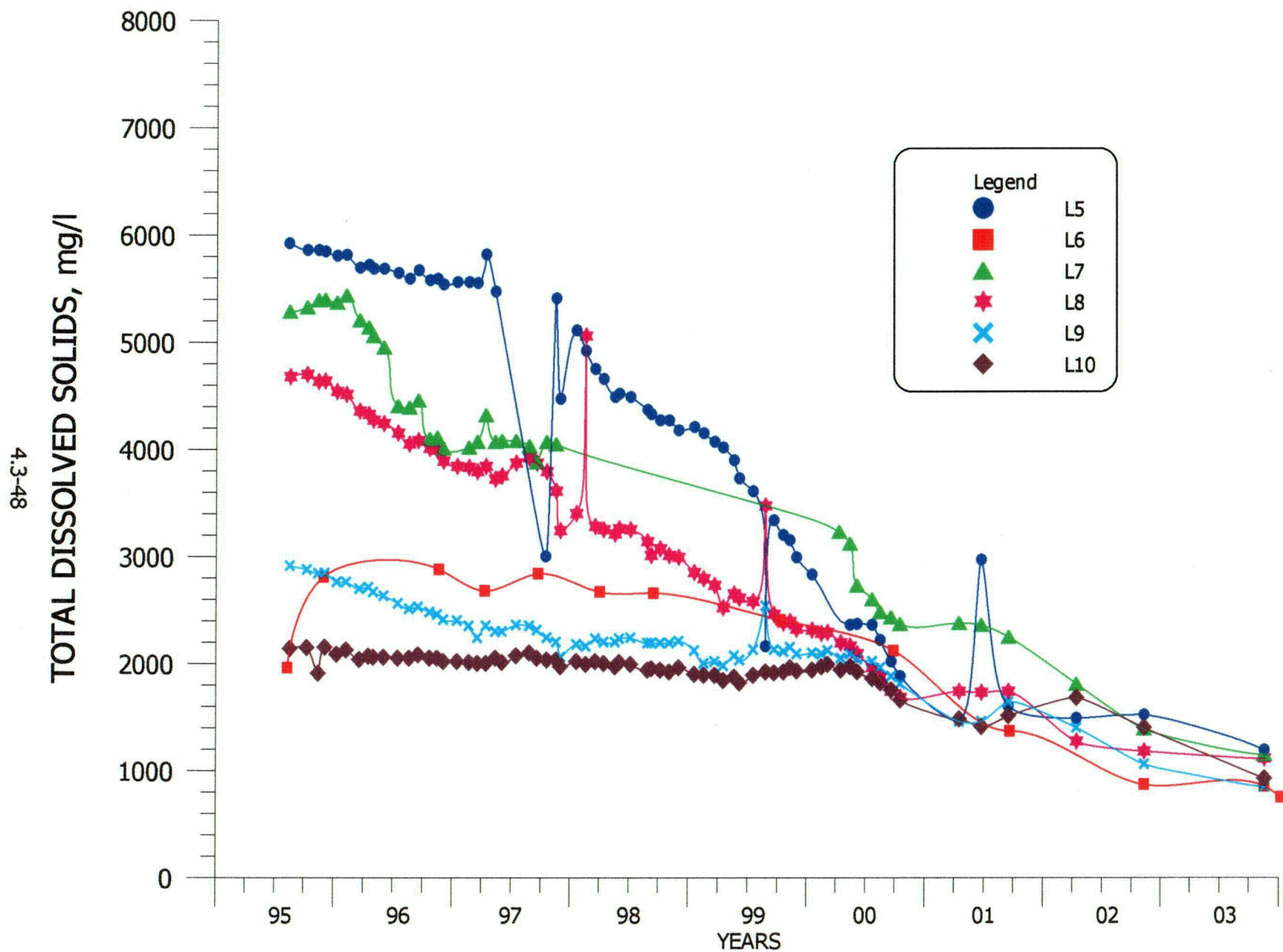
4.3-46



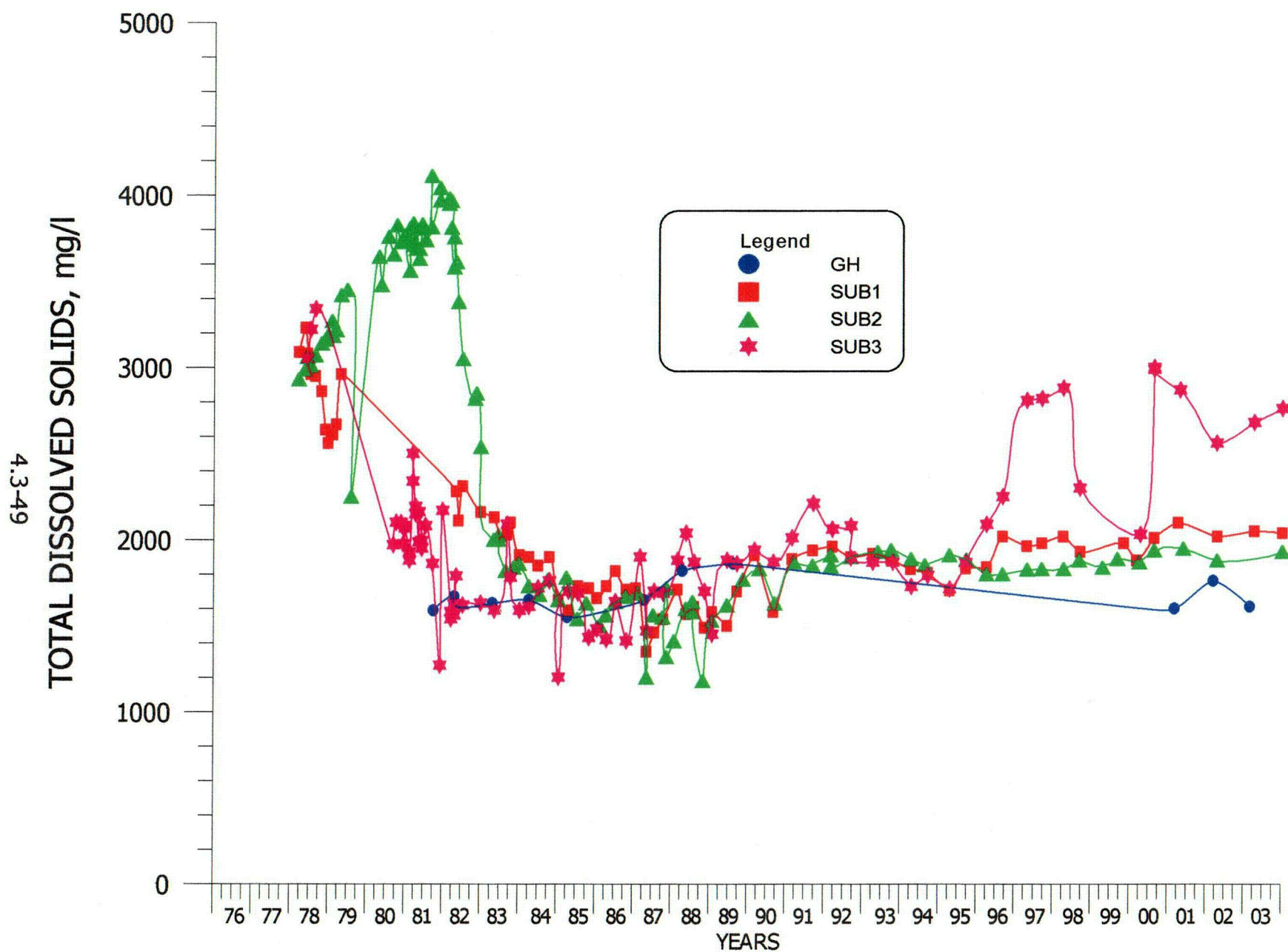
**FIGURE 4.3-26. TDS CONCENTRATIONS FOR WELLS KEB, KF, KZ AND X.**



**FIGURE 4.3-27. TDS CONCENTRATIONS FOR WELLS K4, K5, K7 AND K10.**

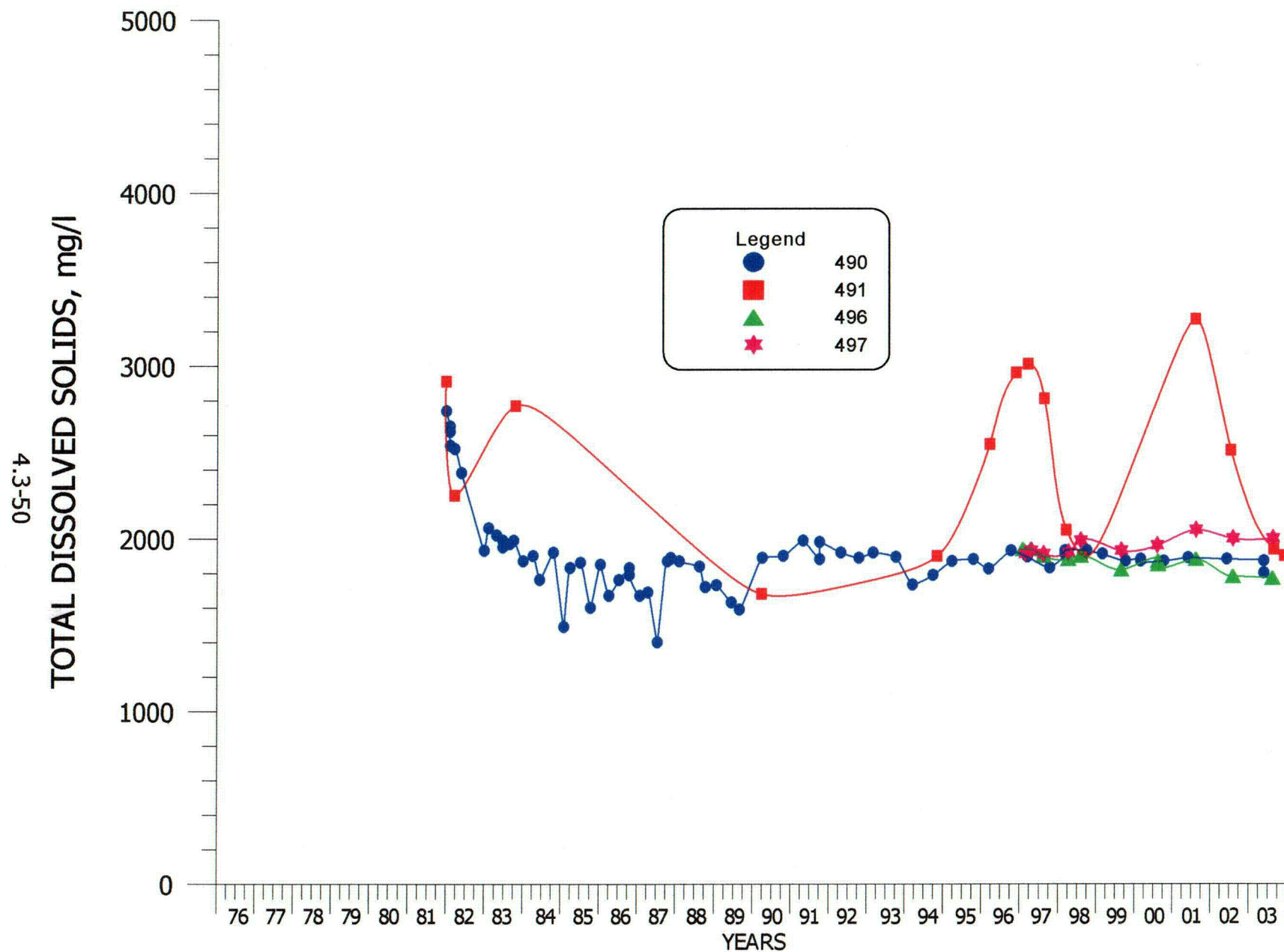


**FIGURE 4.3-28. TDS CONCENTRATIONS FOR WELLS L5, L6, L7, L8, L9 AND L10.**

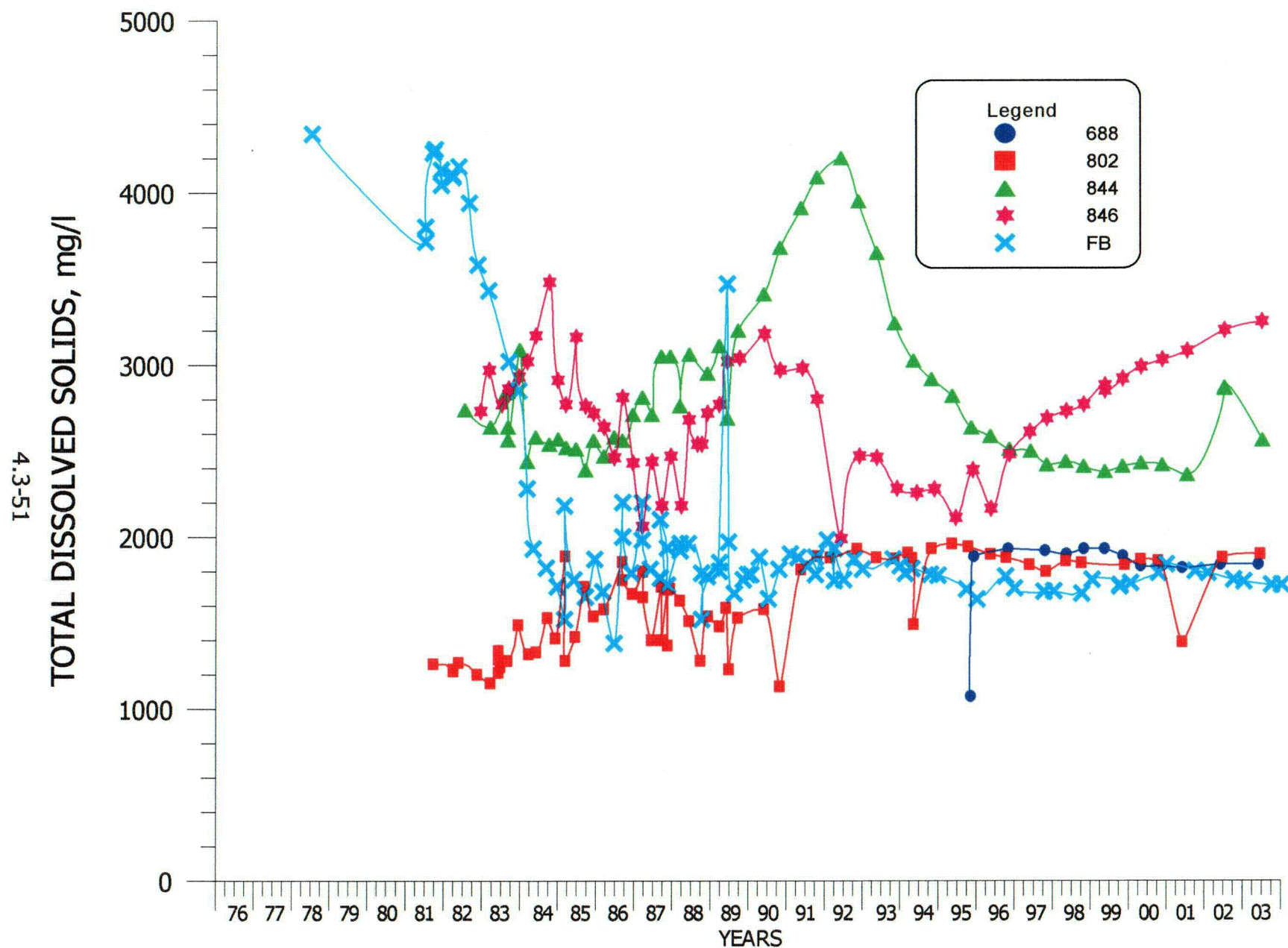


**FIGURE 4.3-29. TDS CONCENTRATIONS FOR WELLS GH, SUB1, SUB2 AND SUB3.**

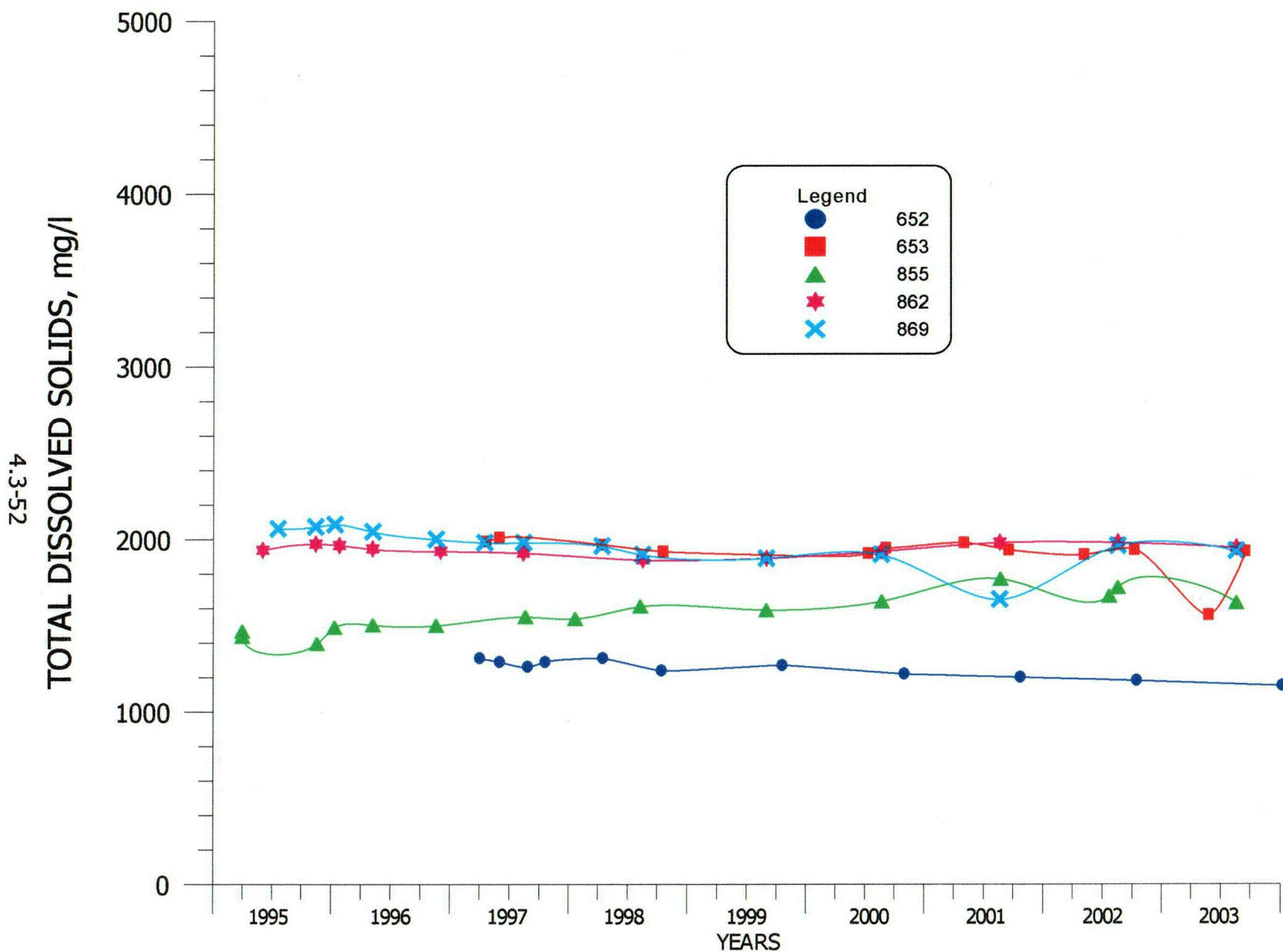




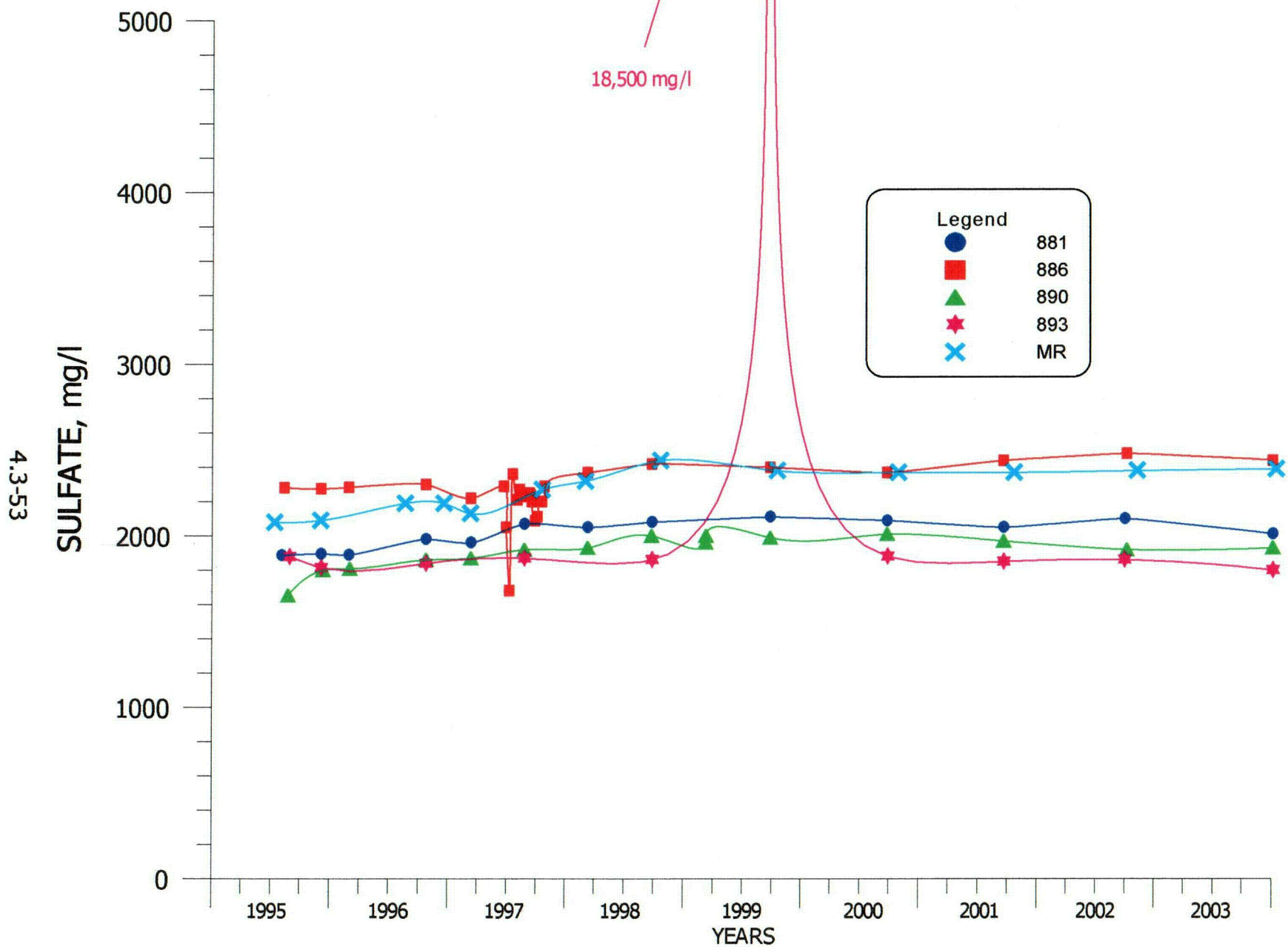
**FIGURE 4.3-30. TDS CONCENTRATIONS FOR WELLS 490, 491, 496 AND 497.**



**FIGURE 4.3-31. TDS CONCENTRATIONS FOR WELLS 688, 802, 844, 846 AND FB.**

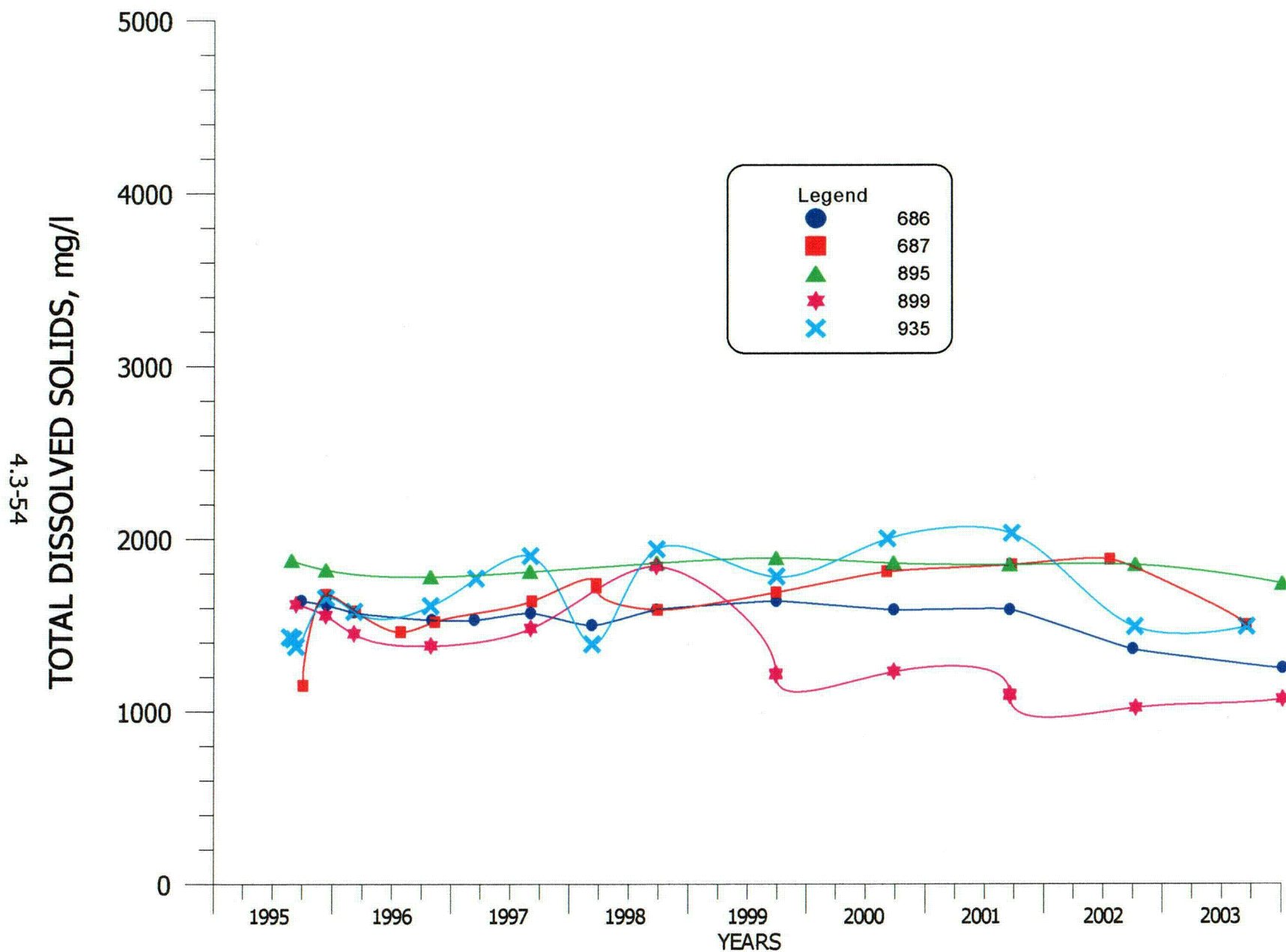


**FIGURE 4.3-32. TDS CONCENTRATIONS FOR WELLS 652, 653, 855, 862 AND 869.**

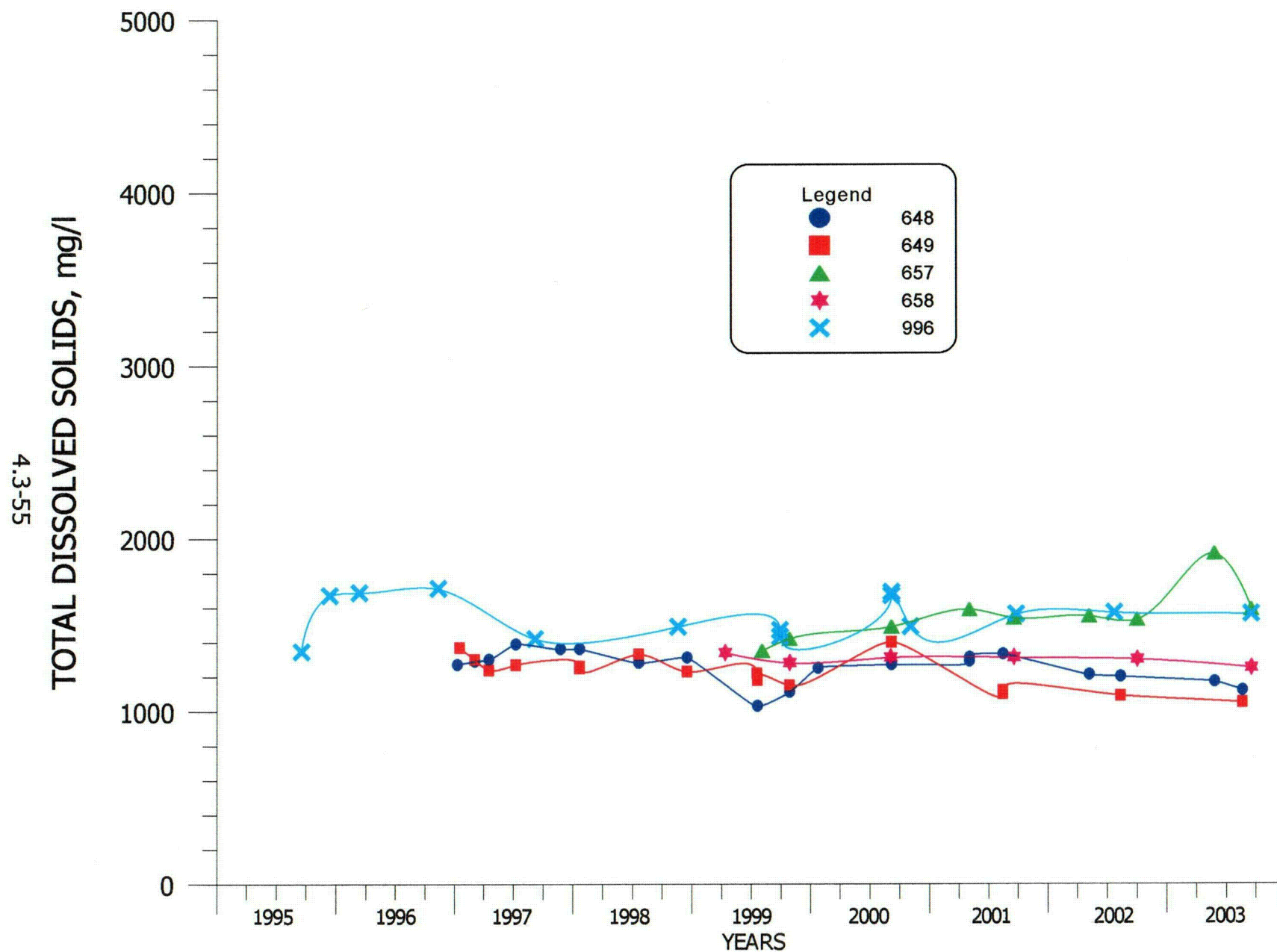


**FIGURE 4.3-33. TDS CONCENTRATIONS FOR WELLS 881, 886, 890, 893 AND MR.**





**FIGURE 4.3-34. TDS CONCENTRATIONS FOR WELLS 686, 687, 895, 899 AND 935.**



**FIGURE 4.3-35. TDS CONCENTRATIONS FOR WELLS 648, 649, 657, 658 AND 996.**