



05000002800R  
308270ED

# The University of Michigan

MICHIGAN MEMORIAL – PHOENIX PROJECT  
PHOENIX MEMORIAL LABORATORY FORD NUCLEAR REACTOR  
ANN ARBOR, MICHIGAN 48109-2100

Rec'd 10/1/02

September 16, 2002

Mrs. Gloria Bennington  
Spent Fuel Project Office  
Nuclear Regulatory Commission  
OWFN-6F-18  
Washington, D.C. 20555

Dan  
Hughes

Dear Mrs. Bennington:

Enclosed is a complete update of the route plan for Route #196. The documents are readable using WordPerfect v. 8 for Windows. Copies are enclosed in both hardcopy and electronic form.

This updated route complies with 10 CFR 73.37, *Requirements for Physical Protection of Irradiated Reactor Fuel in Transit*, and NUREG-0561, Revision 1, *Physical Protection of Shipments of Irradiated Reactor Fuel*. Shipment plans will also ensure that we comply with 10 CFR 73.67(g), *In-Transit Requirements for Special Nuclear Material of Low Strategic Significance*.

Route #196 is the state-preferred route for irradiated fuel shipments from Ann Arbor, MI to Savannah River, SC. Telephone numbers and points of contact have all been verified to be correct for all states through personal communications. Safe havens have been identified at about 50-mile intervals, including any state-requested locations.

The Route #196 Plan also complies with the NRC *Safeguards Advisory For Licensees Who Prepare Or Receive Shipments Of Irradiated Reactor Fuel (SA-01-02)*, dated December 13, 2001, as follows:

- a. The transport vehicle will be continuously and actively monitored using TRANSCOM.
- b. Shipments will have armed escorts at all times. Arrangements will be in place at each state line for transfers of escort responsibilities between each state's LLEA.
- c. The drivers will be instructed to report suspicious or unusual behavior immediately.
- d. Notification will be made to the NRC Operations Center (301-816-5100) upon both departure and arrival of each shipment.
- e. Information regarding the shipment will be limited to those identified and verified persons having a need to know.

The only part of Route #196 which is not in the federal highway system is US-23 from Ann Arbor, Michigan to I-475 in Toledo, Ohio. Michigan and Ohio have approved the use of US-23 and provided written notice to the Federal Highway Administration, Traffic Control division.

11/MS50.5 Public

05000002800p

The details of the armed escort final arrangements will be provided to all need-to-know individuals when advance notifications are made.

We request NRC approval of Route #196 in a timely manner.

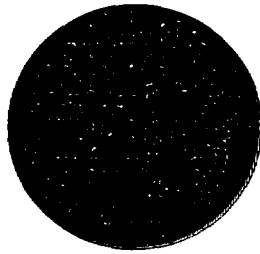
Sincerely,

A handwritten signature in black ink, appearing to read "Christopher W. Becker". The signature is fluid and cursive, with a long horizontal stroke at the end.

Mr. Christopher W. Becker  
Nuclear Reactor Laboratory Manager, Ford Nuclear Reactor

Encl:           Route #196 Plan, updated. (includes Safeguards Information)

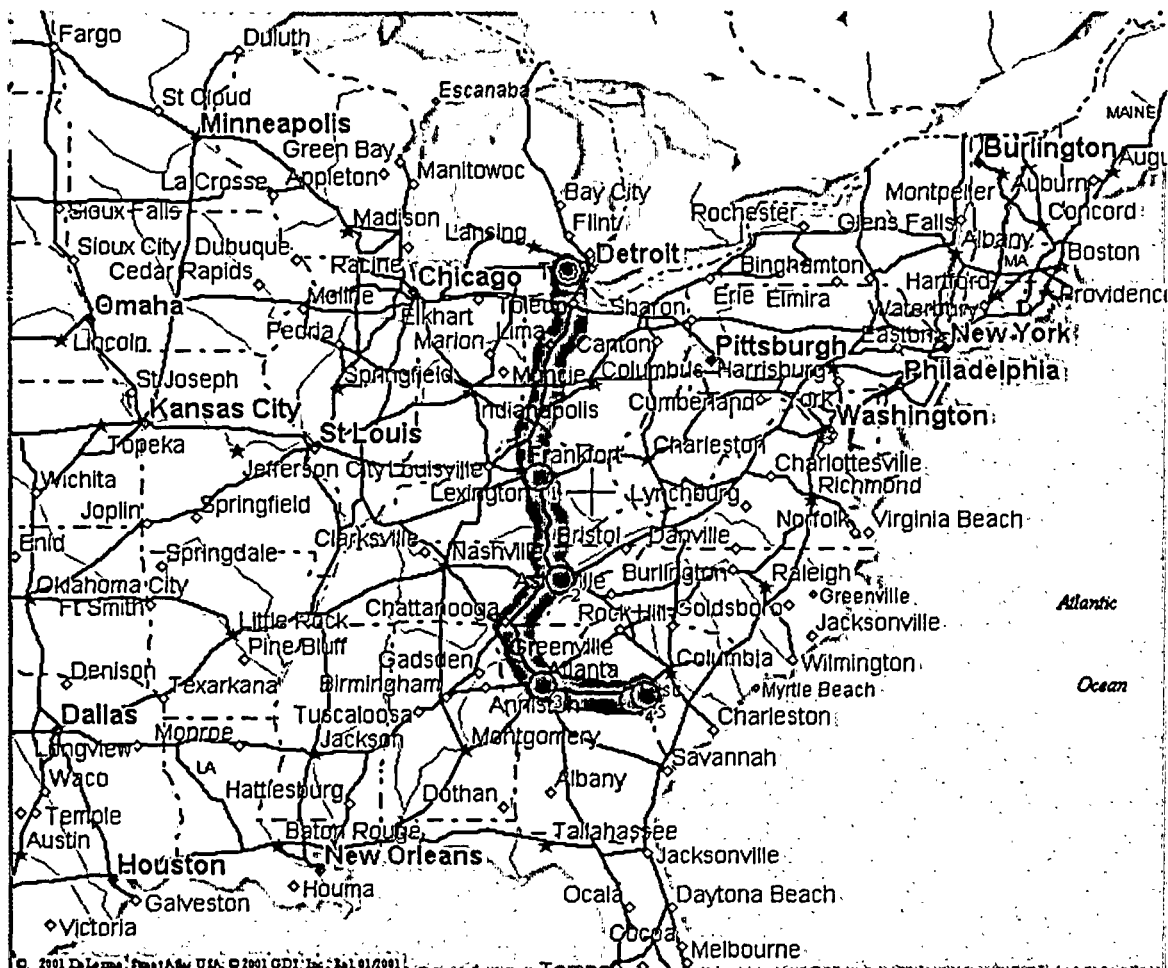
xc:            Correspondence, C. W. Becker  
              NRC Shipping Route Folder



**SPENT FUEL PROJECT OFFICE  
NUCLEAR MATERIAL SAFETY AND SAFEGUARDS**

SEPTEMBER, 2002

**IRRADIATED REACTOR FUEL ROUTE SUMMARY  
UNIVERSITY OF MICHIGAN, ANN ARBOR, MI TO DOE SAVANNAH RIVER PLANT, SC  
[Route 196-Revised]**



**ROUTE MILEAGE SUMMARY**  
**UNIV. OF MICHIGAN, ANN ARBOR, MI TO DOE SAVANNAH RIVER PLANT, SC**

State	Waypoint/ Instruction	Road	Dir	Towards	Miles to Next Waypoint	Cumulative Miles
MI	DEPART UNIV. OF MI	LOCAL	E	YPSILANTI	3	0
MI	TURN ON US-23	US-23	S	OHIO LINE	33	3
MI	STATE MILEAGE SUBTOTAL: 36					
OH	CONTINUE ON US-23	US-23	S	TOLEDO	3	36
OH	TURN ON I-475	I-475	W/S	MAUMEE	20	39
OH	TAKE I-75 SOUTH	I-75	S	CINCINNATI	194	59
OH	GO TOWARDS CINCINNATI	I-275	E/S	KENTUCKY LINE	29	253
OH	STATE MILEAGE SUBTOTAL: 246					
KY	STAY ON I-275	I-275	S	ERLANGER	11	282
KY	TURN ON I-75	I-75	S	TENNESSEE LINE	185	293
KY	STATE MILEAGE SUBTOTAL: 196					
TN	STAY ON I-75	I-75	S	GEORGIA LINE	165	478
TN	STATE MILEAGE SUBTOTAL: 165					
GA	CONTINUE ON I-75	I-75	S	ATLANTA	98	643
GA	TAKE I-285 AROUND ATLANTA	I-285	E	ATLANTA	28	741
GA	TURN EAST ON I-20	I-20	S/E	SOUTH CAROLINA LINE	12	769
GA	STATE MILEAGE SUBTOTAL: 286 274					
SC	CONTINUE E ON I-20	I-20	E	COLUMBIA	18	781
SC	TURN SOUTH ON SC-19	SC-19	S	AIKEN/ SAVANNAH RIVER FACILITY	20	799
SC	STATE MILEAGE SUBTOTAL: 38					
ROUTE TOTAL: 819 955						