



Department of Energy  
Chicago Operations Office  
Salt Repository Project Office  
505 King Avenue  
Columbus, Ohio 43201-2693

WM DOCKET CONTROL  
CENTER

'84 SEP -7 A11:08

WM Record File

106.1

WM Project

16

Docket No.

PDR

LPDR

Distribution:

RFB/MSB

SOB/DEM

(Return to WM, 623-SS)

Jean Tilt

SS/LR/HJM

SL/RS

LEER

L3

Sept. 4, 1984

John J. Linehan, Section Leader  
Salt Section  
Repository Projects Branch  
Division of Waste Management, MS 623-SS  
U.S. Nuclear Regulatory Commission  
Washington, D.C. 20555

Dear Mr. Linehan:

SUBJECT: MINUTES OF MAY 31 MEETING WITH SALT STATES AND NRC

Enclosed are the minutes of the May 31, 1984 meeting with the potential host salt states and the NRC (the sixth bi-monthly meeting).

The seventh bi-monthly meeting was held on August 1-2, 1984, and the minutes of that meeting are in preparation.

Please let me know if you find any errors in this record of our meeting.

Sincerely,

Theodore J. Taylor  
Chief  
Socioeconomic, Environmental,  
and Institutional Relations  
Salt Repository Project Office

SRPO:TJT:max:3842B

Enclosure:  
As Stated

B409250374 B40904  
PDR WASTE  
WM-16 PDR

651

J. Linehan  
Page 2

cc: K. Haggard, MS  
J. Friloux, LA  
D. Smith, TX  
L. Pickerell, UT  
T. Verma, NRC  
G. Nodine, BLM  
R. Strait, NPS  
P. Parry, NPS  
B. Gale, DOE-HQ  
B. Bennett, DOE-HQ  
R. Gale, DOE-HQ  
C. George, DOE-HQ  
G. King, DOE-HQ  
G. Pitchford, DOE-CH  
J. Gervers, Latir Energy  
H. Brown, NGA  
SRPO/SEIR Staff

IN# 501-84

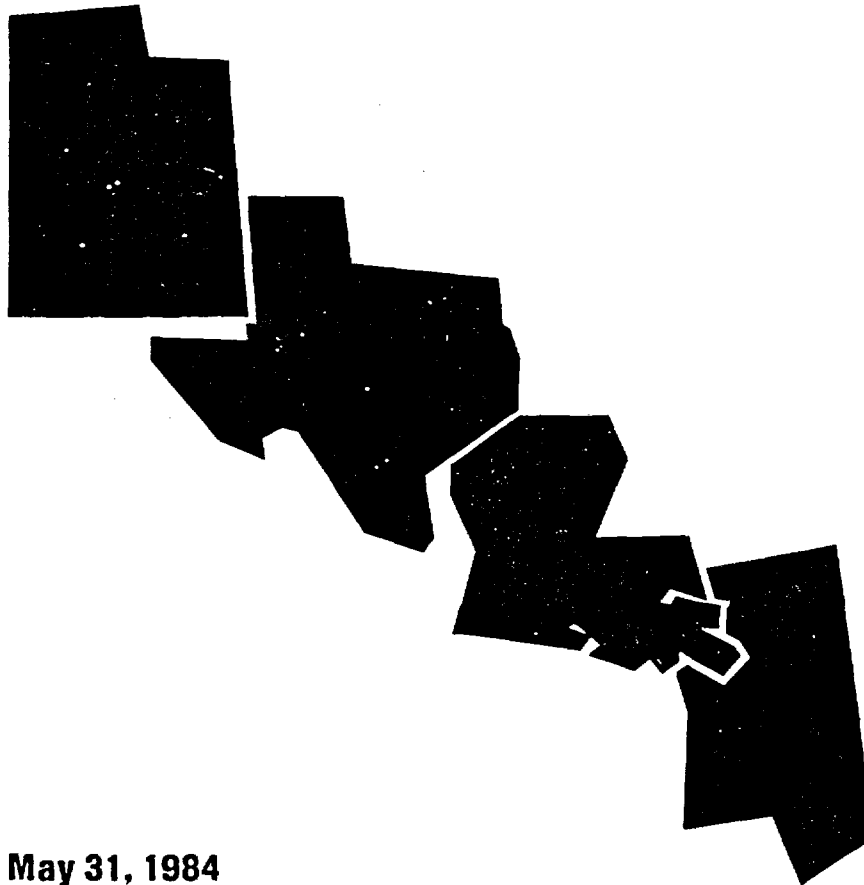
see folder for Mr.  
90 Linahan Am. Taylor

9-4-84

**U.S. Department of Energy**

**Office of Civilian  
Radioactive Waste Management**

**Meeting with  
Salt State Representatives**



**May 31, 1984  
Washington, D.C.**

MINUTES OF  
MEETING WITH SALT STATE REPRESENTATIVES AND NRC

MAY 31, 1984

The listing of attendees (Attachment 1) and the agenda (Attachment 2) are attached.

Ted Taylor welcomed state and NRC representatives and others to the sixth state meeting. Introductions of all attendees were made.

Land Acquisition

Alan Handwerker, Counsel, SRPO, discussed requirements for land acquisition, land acquisition during site characterization and the role of the Corps of Engineers in the land acquisition process. Real Estate Planning Reports will be written for DOE by the Corps based on an Interagency Agreement negotiated with input from the states. These reports will contain information on many aspects of land acquisition, as outlined in the attached copies of viewgraphs. Questions and discussion followed on whether land would be leased or purchased, withdrawal of land by Congress, and states' roles in providing input for the planning report(s). (Land acquisition viewgraph copies are Attachment 3.)

David Cohen, Corps of Engineers, detailed Corps involvement in land acquisition for the U.S. Government. He reviewed the Real Estate Division organization and its functions. Acquisition policy and compensation were discussed. The responsibilities of the Appraisal Division were explained. Length of time for acquisition, moving expenses, condemnation process, and use of field offices were discussed. Questions were raised on process of selecting appraisers and determining fair market value. Mr. Cohen pointed out that the Corps is required to follow federal law, not state law. He indicated that the states may appoint an official state contact with whom the Corps and DOE will work. A meeting will be planned for DOE, Corps, and state representatives to discuss the proposed interagency agreement between DOE and the Corps on land acquisition procedures. (Corps of Engineers viewgraph copies are Attachment 4.)

### Transportation

Reuben Peterson, ONWI, introduced the transportation topic and gave an overview of handouts available. His remarks included information on DOE transportation programs, types and quantities of waste shipments, transportation modes, and NRC regulations.

John Allen, BCL, reviewed DOT regulations. DOT regulations were categorized as follows:

1. Classification (e.g., class for material)
2. Packaging (packaging regulations)
3. Hazard Communication (communicating hazards for transportation cycle; i.e., emergency response)
4. Carrier Controls (e.g., routing and prenotification)

Routing requirements include: following route designated by appropriate state agency; if not designated, following interstate highway system with shortest transit time, and using beltways around cities to avoid highly congested areas.

Tom McSweeney, ONWI, discussed routing: regional, state, and site-specific. There are many possible routes at each salt site and states will have some authority in the matter of selecting routes to be used. A discussion followed on routes being evaluated in the EAs versus routes that will actually be used. Tom also reviewed tools for analyzing transportation systems.

The transportation discussion also included types and probabilities of accidents, sabotage, risks to people along transportation routes, statistics and records to date, federal and state activities in emergency response, and transportation legislation. (Viewgraph copies and handouts on transportation are Attachment 5.)

### Environmental Assessments

Bob Wunderlich, SRPO, reviewed present status of the EAs. The working drafts of EAs have been sent to states and NRC. The next working draft EA will be sent June 1. EA areas which still need resolution include: air quality and noise impact analysis, amount of land that would potentially be contaminated

by salt, possible inconsistencies with the final Siting Guidelines and the draft Mission Plan, addition of new references, and schedule changes. States asked when Chapters 1 and 7 would be available from DOE-HQ, requested information on data sheets, and discussed the length of time needed for adequate review and comments. (EA viewgraph copies are Attachment 6.)

#### NRC Presentation

The NRC report was given by Bob Johnson and Teek Verma. NRC is presently involved in activities to prepare for reviewing the public draft of the EAs. Plans are for a 60 day review period; references and selected primary data will be reviewed prior to receiving the EAs. A variety of EA review preparation activities are being used by NRC; data review meetings are of primary importance. To date, a data review was conducted for hydrology; future data reviews are planned for rock mechanics and geology. A performance assessment meeting is planned for mid-June and a geochemistry meeting is being considered.

#### States' Caucus/Response

Loretta Pickerell of Utah presented the following state comments:

##### Corp of Engineers presentation

- States will attempt to get written comments to SRPO before meeting on June 21 in Washington, D.C.
- Interagency agreement is the minimum states would find workable.
- Corps does not seem sensitized to feelings a repository will create.
- Information presented on treatment of state lands was inadequate.
- States would like insight on litigation in WIPP case.

##### Transportation presentation

- States would like more national information on this topic.
- States would like access to routing models.
- Information was lacking on state regulations, statutes, legislation, Regional Transportation Study, and alternative methods of transportation.
- SRPO agreed states should be involved in agenda planning for next state meeting to ensure vital issues on transportation will be discussed.

- States would like more information on following topics:
  - Cask development
  - DOE plans for dealing with nonaffected states
  - Price-Anderson Act and liability questions
  - Emergency Response plans and assistance available to states to begin preparing.

#### Interfact with DOE

- States proposed inviting other interested groups (i.e., NGA, NCSL) to state meetings.
- States will consider DOE's offer to have people help with library needs.

#### EA Review Process

- States need to receive more copies of EAs and data sheets.
- States need hard copy, not microfiche.

#### Next State Meeting

- End of July--1-1/2 to 2 days.
- Prefer Wednesday and Thursday, rather than Thursday and Friday.
- Will be held in Columbus.
- Topics for meeting: Mission Plan, EAs, Transportation issues.

#### NRC comments include:

- NRC requests a copy of revised reference list for EAs.
- NRC requests updated data sheets when they are available.
- NRC requests revised schedule for preparation of EA final draft and data sheets when schedule is available.

Submitted by Debra Halliday, ONWI

**ATTACHMENT 1**



ATTENDEES

MEETING WITH SALT STATE REPRESENTATIVES AND NRC  
MAY 31, 1984

<u>Name</u>	<u>Affiliation</u>
Loretta Pickerell	State of Utah
Lou Hare	State of Utah
Kelly Haggard	State of Mississippi
Jim Friloux	State of Louisiana
Robert Johnson	NRC
Nancy Still	NRC
Tilak Verma	NRC
John Cook	NRC/NMSS
David Cohen	Corps of Engineers
Monte Ferry	Corps of Engineers
Max Follmer	Corps of Engineers
Herbert Fahy	Corps of Engineers
Pete Parry	Canyonlands National Park
Richard Strait	National Park Service
Cecil Lewis	National Park Service/Denver
Bruno Loran	Parsons-Redpath
Steve Smith	Weston
George Loudder	Battelle Advisor, Texas
Charles Killgore	Battelle Advisor, Louisiana
Arlie Howell	Battelle Advisor, Mississippi
Susan Byrne	Interface Associates
Al Smith	Interface Associates
Ted Taylor	DOE/SRPO
Jeff Neff	DOE/SRPO
Linda McClain	DOE/SRPO

<u>Name</u>	<u>Affiliation</u>
Alan Handwerker	DOE/SRPO
Jeff Williams	DOE/SRPO
Beth Darrough	DOE/SRPO
Bob Wunderlich	DOE/SRPO
Ben Easterling	DOE/HQ
Critz George	DOE/HQ
Carole Currin	DOE/OGC
Charlie Smith	DOE/OCRWM
Charles Mauck	DOE/OCRWM
Robert Philpott	DOE/OCRWM
Heidi Ramirez	DOE/CH
Stan Goldsmith	Battelle/ONWI
Don Keller	Battelle/ONWI
Helen Latham	Battelle/ONWI
Bill Merriman	Battelle/ONWI
Diane Cattran	Battelle/ONWI
Debra Halliday	Battelle/ONWI
Dotti Wilson	Battelle/ONWI
Sara Daneman	Battelle/BPMD
Reuben Peterson	Battelle/ONWI
Tom McSweeney	Battelle/ONWI
John Allen	Battelle/BCL
Al LaSala	USGS
Jack Robertson	USGS
Caroline Petti	Environmental Policy Institute
Holmes Brown	National Governors' Association
John Gervers	Nater Energy Consultants
Fred Millar	EPI

Name

David Berick

Affiliation

EPI

**ATTACHMENT 2**

## AGENDA

### SIXTH BIMONTHLY MEETING WITH SALT STATES REPRESENTATIVES AND NRC

MAY 31, 1984

CAPITOL HOLIDAY INN  
550 C STREET SW  
WASHINGTON, D.C.

#### Thursday, May 31

8:30 a.m.	Introduction	T. Taylor
9:00 a.m.	Land Acquisition	A. Handwerker*
10:30 a.m.	Transportation	R. Peterson T. McSweeney J. Allen
12:30 p.m.	Lunch	
1:30 p.m.	Environmental Assessments	R. Sharma
2:30 p.m.	NRC	
3:30 p.m.	States Caucus	
4:30 p.m.	State Comments	

\* Dave Gray, COE; D. Trost, HQ; H. Ramirez, CH; S. Daneman, BPMD

**LAND ACQUISITION**

**ALAN HANDWERKER, COUNSEL  
SALT REPOSITORY PROJECT OFFICE  
DEPARTMENT OF ENERGY**

**MAY 31, 1984**

10 C.F.R. 60.121 ESTABLISHES THE NRC LICENSING REQUIREMENT FOR  
OWNERSHIP AND CONTROL.OF INTERESTS IN LAND FOR THE REPOSITORY.

**ATTACHMENT 3**



## FUTURE ACTIVITIES

- CONTINUE TO DEVELOP AND REFINE THE EAs
  - EXPECTED ENVIRONMENTAL IMPACTS
  - ACCESS ROUTES
  - WATER REQUIREMENTS
  - SALT PILE MANAGEMENT
  - AIR QUALITY AND NOISE IMPACTS ANALYSES
  - CONSISTENCY
  
- MODIFY EAs TO REFLECT CHANGES IN THE PROGRAM BASELINE
  - CHANGES IN THE SITING GUIDELINES
  - CHANGES IN THE MISSION PLAN

SECTION (A) REQUIRES THE GEOLOGIC REPOSITORY OPERATIONS AREA (HLW FACILITY, INCLUDING SURFACE AND SUBSURFACE AREAS WHERE WASTE HANDLING ACTIVITIES ARE CONDUCTED) AND THE CONTROLLED AREA (A SURFACE LOCATION EXTENDING HORIZONTALLY NO MORE THAN 10 KILOMETERS FROM THE OUTER BOUNDARY OF THE UNDERGROUND FACILITY AND THE UNDERLYING SUBSURFACE FROM WHICH INCOMPATIBLE ACTIVITIES WOULD BE RESTRICTED FOLLOWING PERMANENT CLOSURE) BE ON LAND UNDER THE JURISDICTION AND CONTROL OF DOE, OR LANDS PERMANENTLY WITHDRAWN AND RESERVED FOR ITS USE.

THE REPOSITORY SITE MUST BE HELD FREE AND CLEAR OF SIGNIFICANT ENCUMBRANCES, SUCH AS:

1. RIGHTS ARISING UNDER THE GENERAL MINING LAWS;
2. EASEMENTS FOR RIGHT-OF-WAY;
3. ALL OTHER RIGHTS ARISING UNDER LEASE, RIGHTS OF ENTRY, DEED, PATENT, MORTGAGE, APPROPRIATION, PRESCRIPTION OR OTHERWISE.

10 C.F.R. 60.121 (b) REQUIRES DOE TO EXERCISE ANY JURISDICTION AND CONTROL OVER SURFACE AND SUBSURFACE ESTATES OUTSIDE THE CONTROLLED AREA NECESSARY TO PREVENT ADVERSE HUMAN ACTIONS THAT COULD SIGNIFICANTLY REDUCE THE REPOSITORY'S ABILITY TO ACHIEVE ISOLATION. THE RIGHTS OF DOE MAY TAKE THE FORM OF APPROPRIATE POSSESSORY INTERESTS, SERVITUDES, OR WITHDRAWALS FROM LOCATION UNDER THE GENERAL MINING LAWS. REQUIRED WATER RIGHTS WOULD ALSO BE ACQUIRED.

LAND OWNERSHIP AND CONTROL REQUIREMENTS ARE ALSO CONSIDERED IN TWO SITING GUIDELINES:

1. 960.4-2-8-2 - POSTCLOSURE QUALIFYING CONDITION. THE SITE SHALL BE LOCATED ON LAND FOR WHICH DOE CAN OBTAIN, IN ACCORDANCE WITH THE REQUIREMENTS OF 10 C.F.R. 60, OWNERSHIP, SURFACE AND SUBSURFACE RIGHTS AND CONTROL OF ACCESS THAT ARE REQUIRED IN ORDER THAT POTENTIAL SURFACE AND SUBSURFACE ACTIVITIES WILL NOT BE LIKELY TO LEAD TO RADIONUCLIDE RELEASES GREATER THAN THOSE ALLOWABLE UNDER THE REQUIREMENTS SPECIFIED IN SECTION 960.4-1 (10 C.F.R 60, 191).

2. 960.5-2-2 - PRECLOSURE QUALIFYING CONDITION. THE SITE SHALL BE LOCATED ON LAND FOR WHICH DOE CAN OBTAIN, IN ACCORDANCE WITH THE REQUIREMENTS OF 10 C.F.R. 60.121, OWNERSHIP, SURFACE AND SUBSURFACE RIGHTS, AND CONTROL OF ACCESS THAT ARE REQUIRED IN ORDER THAT SURFACE AND SUBSURFACE ACTIVITIES DURING REPOSITORY OPERATION AND CLOSURE WILL NOT BE LIKELY TO LEAD TO RADIONUCLIDE RELEASES TO AN UNRESTRICTED AREA GREATER THAN THOSE ALLOWABLE UNDER THE REQUIREMENTS SPECIFIED IN SECTION 960.5-1(a)(1) (10 C.F.R. 20; 10 C.F.R. 60; 40 C.F.R. 191).

## METHODS OF ACQUISITION - SITE CHARACTERIZATION

PUBLIC LAND. SECTION 302(B) OF THE FEDERAL LAND POLICY AND MANAGEMENT ACT OF 1976 PROVIDES THAT THE SECRETARY OF INTERIOR MAY PERMIT FEDERAL DEPARTMENTS TO USE, OCCUPY AND DEVELOP PUBLIC LANDS ONLY THROUGH RIGHTS-OF-WAY, WITHDRAWALS, AND WHERE THE PROPOSED USE AND DEVELOPMENT ARE SIMILAR OR CLOSELY RELATED TO THE PROGRAMS OF THE SECRETARY FOR THE PUBLIC LANDS INVOLVED, A COOPERATIVE AGREEMENT.

**PUBLIC LAND FOR THE EXPLORATORY SHAFT FACILITY AND RELATED SITE  
CHARACTERIZATION ACTIVITIES WILL BE OBTAINED BY WAY OF A  
COOPERATIVE AGREEMENT.**



PUBLIC LAND REQUIRED TO PROTECT THE POTENTIAL REPOSITORY SITE  
WILL BE OBTAINED BY WAY OF AN ADMINISTRATIVE WITHDRAWAL OF LESS  
THAN 5,000 ACRES. TITLE TO THIS LAND WILL REMAIN IN BLM.

PRIVATE LAND. DOE WILL UTILIZE THE CORPS OF ENGINEERS TO PURCHASE  
SURFACE AND SUBSURFACE RIGHTS REQUIRED TO CONSTRUCT THE EXPLORATORY  
SHAFT FACILITY.

**PURCHASE PRICE WILL BE BASED ON GOVERNMENT APPROVED APPRAISAL.**

CONDEMNATION PROCEEDING WILL BE UTILIZED AS A LAST RESORT IF  
THE GOVERNMENT IS UNABLE TO NEGOTIATE THE PURCHASE OF THE  
REQUIRED LAND.

LAND TO PROTECT THE POTENTIAL REPOSITORY SITE WILL BE OBTAINED  
BY EITHER A FEE SIMPLE PURCHASE OR A LEASE. LEASES, IF USED,  
WOULD BE FOR A FIVE-YEAR TERM, WITH OPTION TO RENEW.

SHOULD DOE BE UNABLE TO NEGOTIATE PURCHASE OR LEASE AGREEMENTS TO  
PROTECT THE POTENTIAL REPOSITORY SITE, CONDEMNATION WILL BE  
UTILIZED.

## METHODS OF ACQUISITION - REPOSITORY

PUBLIC LAND. A PERMANENT WITHDRAWAL OF THE GEOLOGIC REPOSITORY  
OPERATIONS AREA AND THE CONTROLLED AREA WILL BE MADE PURSUANT  
TO AN ACT OF CONGRESS.

PRIVATE LAND. DOE WILL COMPLETE FEE SIMPLE PURCHASE OF THE  
GEOLOGIC REPOSITORY OPERATION AREA AND THE CONTROLLED AREA.  
DOE WILL ATTEMPT TO PURCHASE THE REQUIRED AREAS THROUGH  
NEGOTIATION BASED ON A GOVERNMENT APPROVED APPRAISAL.  
CONDEMNATION WILL BE UTILIZED AS A LAST RESORT.



### CURRENT DOE LAND ACQUISITION ACTIVITY

DOE IS IN THE PROCESS OF NEGOTIATING AN INTERAGENCY AGREEMENT  
WITH THE U.S. ARMY CORP OF ENGINEERS. THE PROPOSED AGREEMENT  
IS STRUCTURED IN TWO PHASES:

**PHASE I. PREPARATION OF SEVEN REAL ESTATE PLANNING REPORTS  
AND CORPS ATTENDANCE AT DOE MEETINGS.**

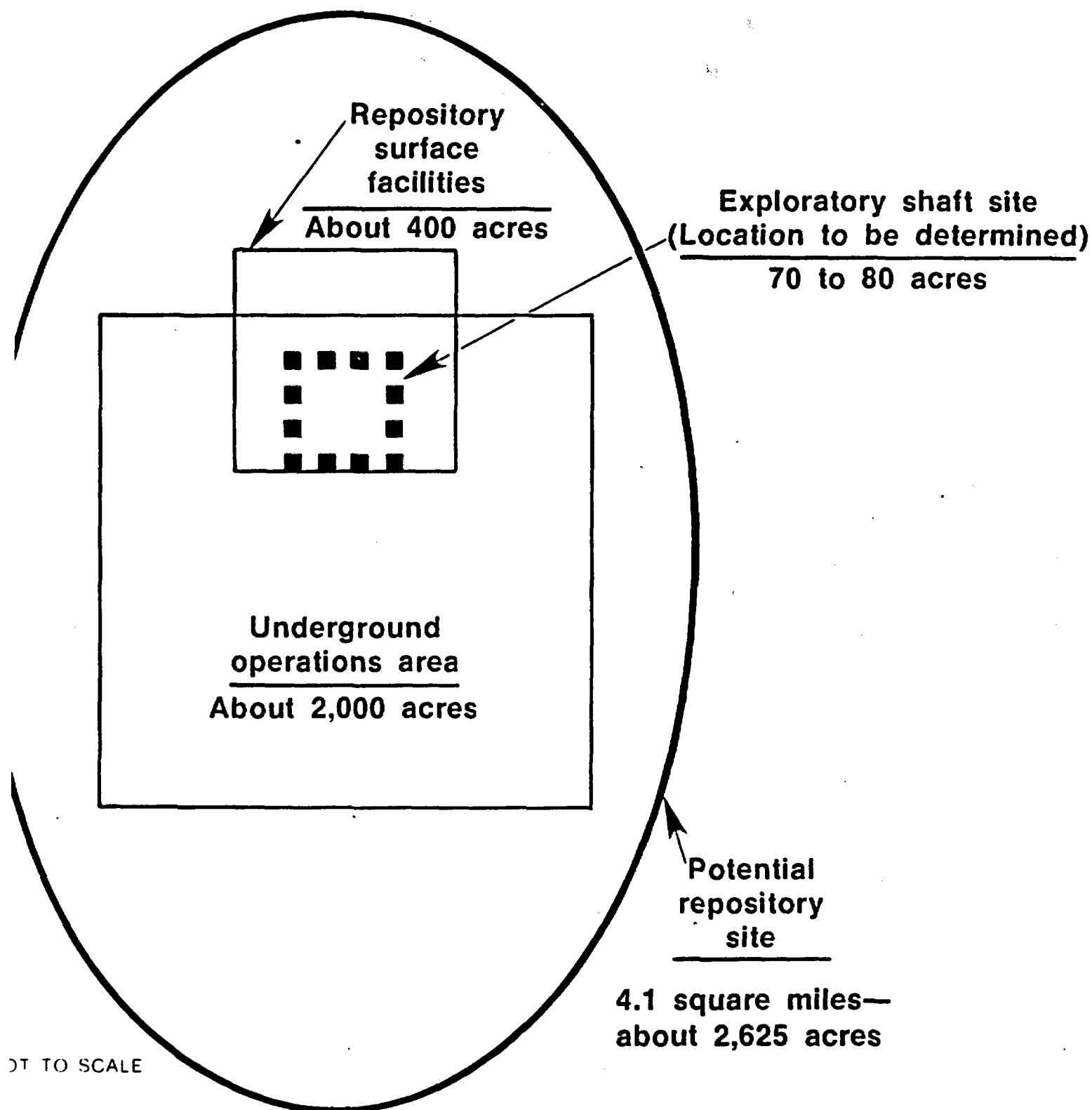
PHASE II. ACQUISITION OF REQUIRED PRIVATE REAL ESTATE INTERESTS

FOR SITE CHARACTERIZATION.

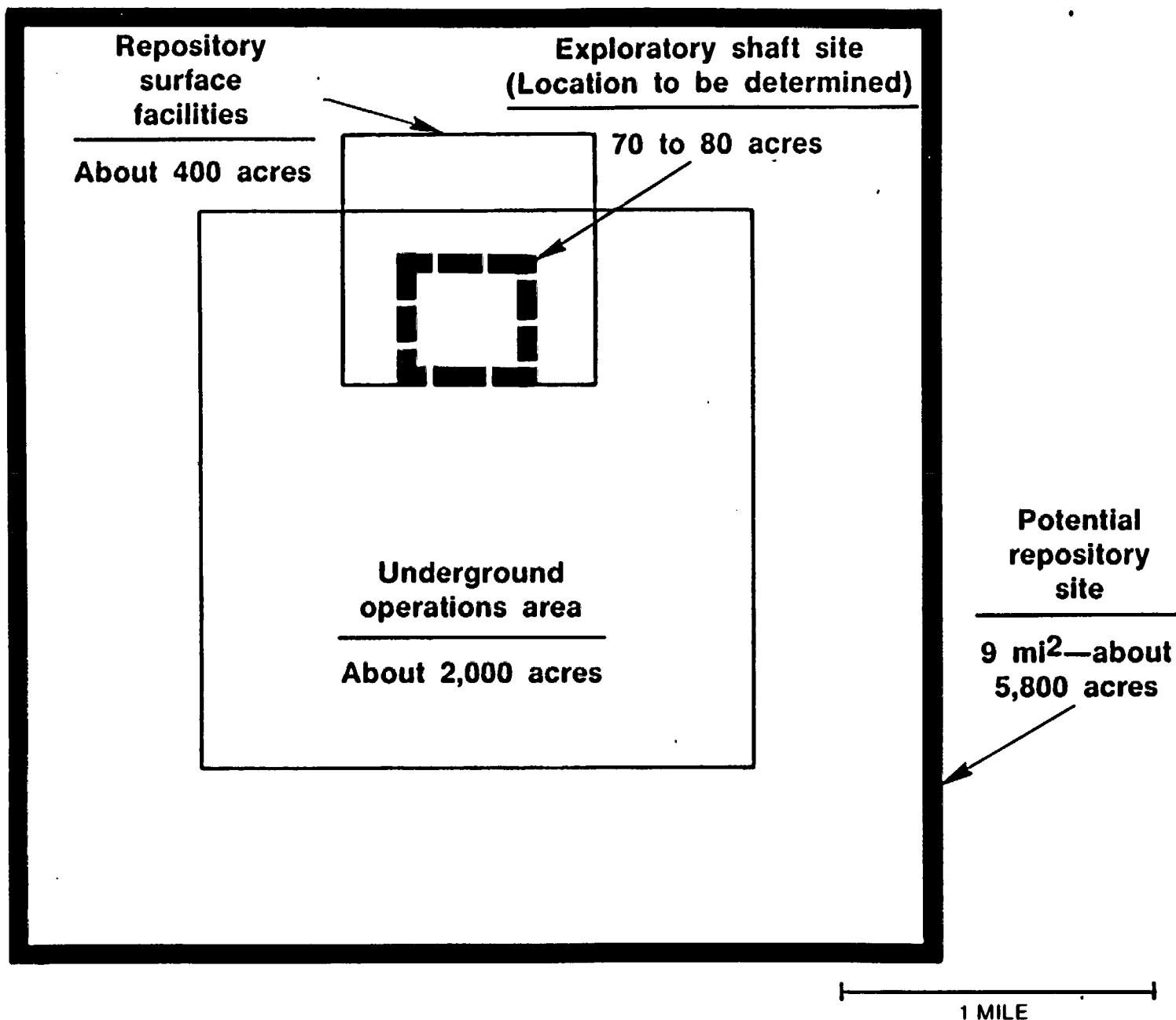
PUBLIC INTERACTION. THE INTERAGENCY AGREEMENT REQUIRES APPROVAL  
OF DOE PRIOR TO THE CORPS' CONTACTING MEMBERS OF THE PUBLIC OR  
LOCAL AND STATE GOVERNMENTS.

## REAL ESTATE PLANNING REPORT

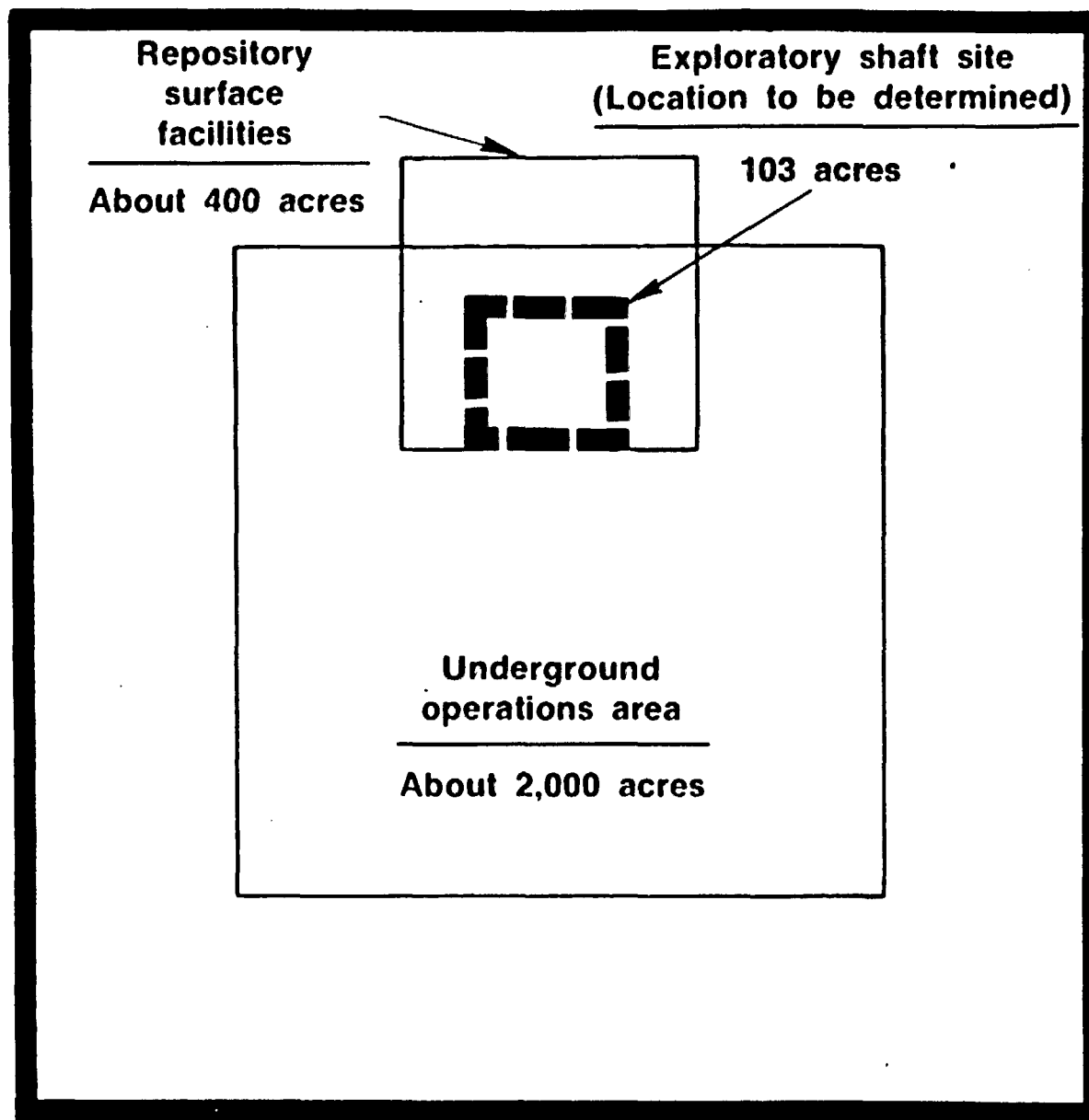
- AUTHORITY AND PROJECT
- PROCEDURES - CORP OF ENGINEERS PROCEDURES
- DESCRIPTION OF SELECTED SITE-TRACT NUMBERS, NAME OF LANDOWNERS, ESTATE PROPOSED FOR ACQUISITION
- RELOCATIONS - NEED FOR AND GROSS ESTIMATED COST OF RELOCATIONS
- OUTSTANDING INTERESTS AND RESERVATIONS - MINERAL RIGHTS, OIL AND GAS LEASES, WATER RIGHTS, AND THEIR VALUES
- VALUATION - GROSS COST ESTIMATE
- UNIFORM RELOCATION ASSISTANCE COSTS - NUMBER OF APPLICANTS AND REIMBURSEMENT COSTS
- RECOMMENDATIONS - LAND ACQUISITION, PROTECTION
- ADMINISTRATIVE COSTS - PHASE I, PHASE II
- SCHEDULE - PURCHASE OF ENTIRE AREA, PURCHASE AND LEASE.



## **Estimated Land Needs for Potential Site: Louisiana**



**Estimated Land Needs for  
Potential Site: Texas**

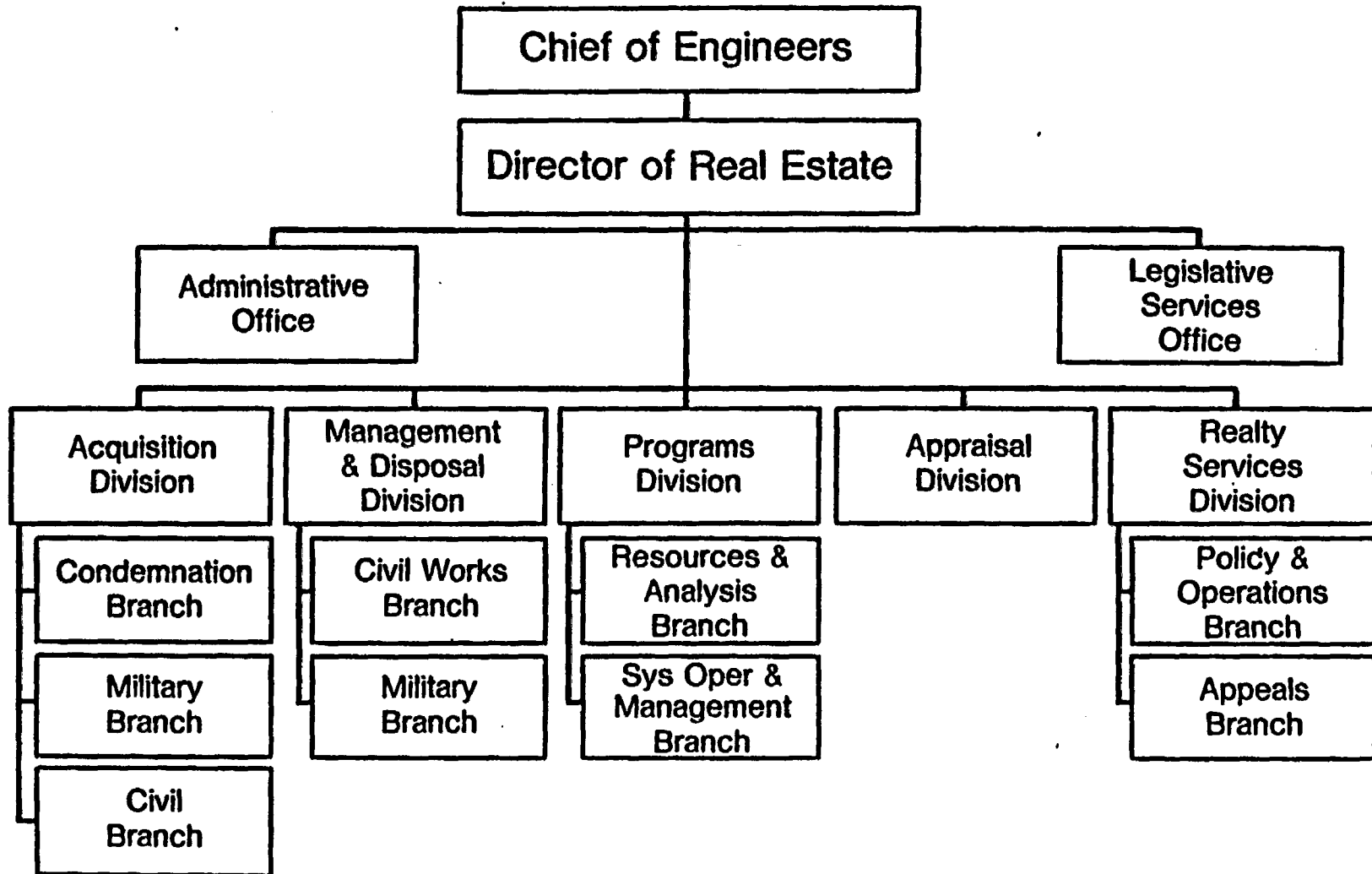


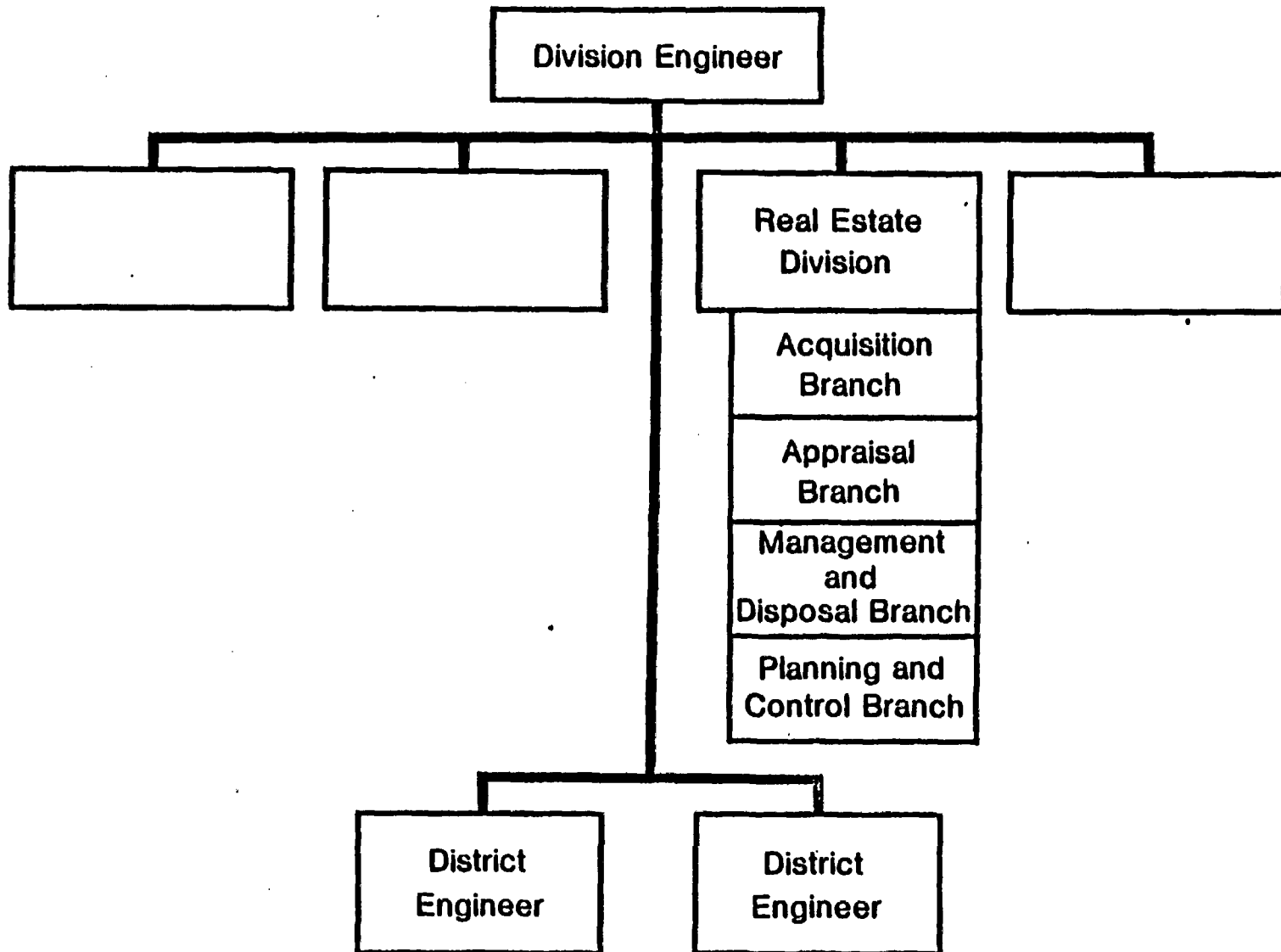
**Estimated Land Needs for Potential Site:  
Davis Canyon, Utah**



**ATTACHMENT 4**

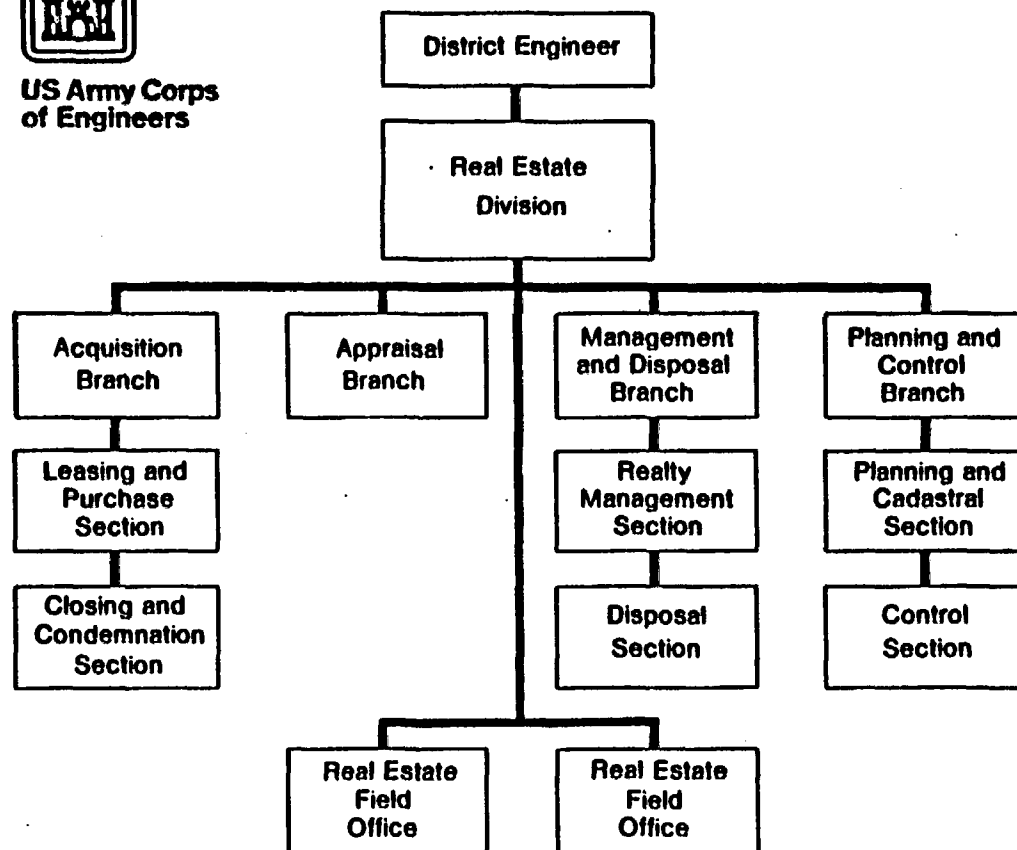
# Real Estate Organization







**US Army Corps  
of Engineers**





US Army Corps  
of Engineers

## Corps Offices Assigned Real Estate Responsibility

### Civil Works Responsibility Only

- Huntington
- Memphis
- Nashville
- New England
- New Orleans
- North Central
- Portland
- Saint Louis
- Vicksburg
- Walla Walla



### Military Responsibility Only

Saudi Arabia

### Military and Civil Works Responsibility

- Alaska
- Albuquerque
- Baltimore
- Fort Worth
- Galveston
- Jacksonville
- Kansas City
- Little Rock
- Los Angeles
- Louisville
- Mobile
- New York
- Norfolk
- Omaha
- Pacific Ocean
- Sacramento
- Savannah
- Seattle
- Tulsa



US Army Corps  
of Engineers

## Functions of Acquisition Division

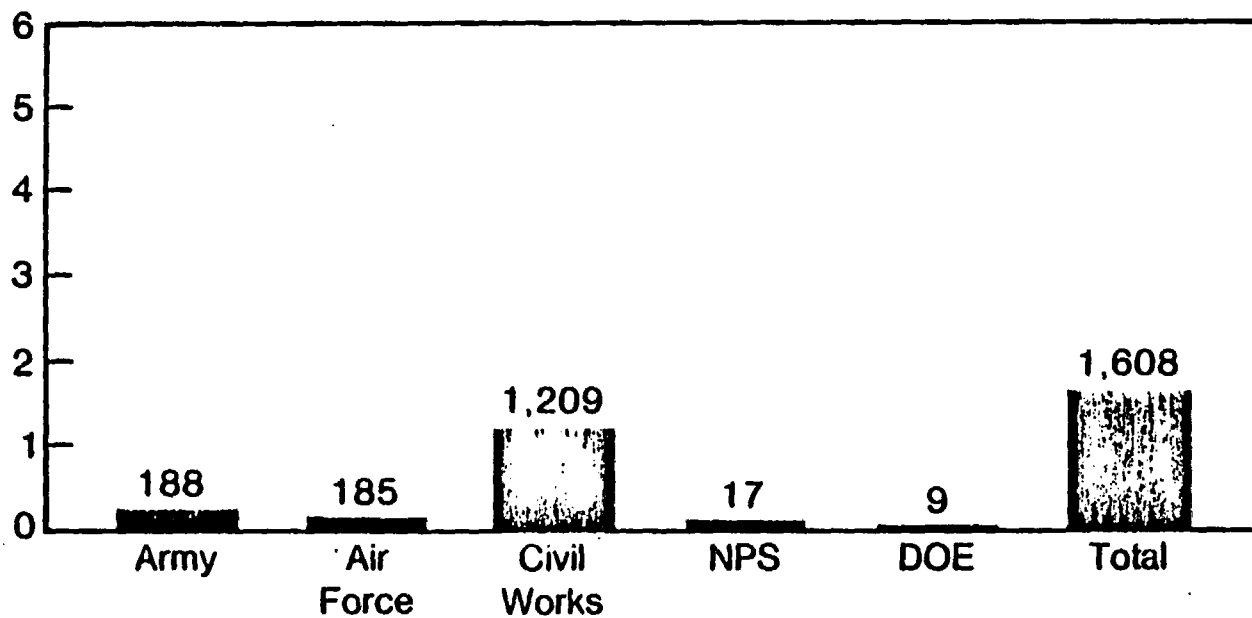
- Develop policies and procedures relating to acquisition of real property
  - Negotiations
  - Title evidence
  - Closings
  - Condemnation
  - Inleasing
  - Relocation of utilities
  - AICUZ program land acquisition
  - DOD recruiting space
-



US Army Corps  
of Engineers

## Acquisition Accomplishment Tracts—FY 1983

Thousands

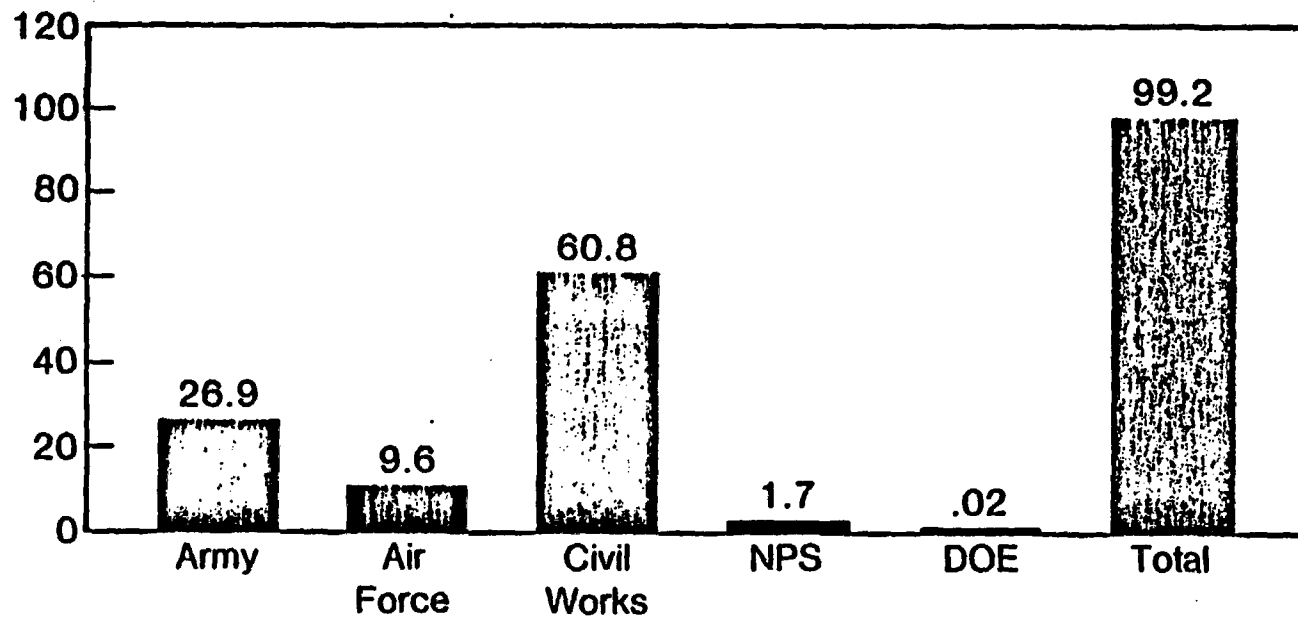




US Army Corps  
of Engineers

## Acquisition Accomplishment Land Payments—FY 1983

\$ Millions







US Army Corps  
of Engineers

## Department of Energy Strategic Petroleum Reserve Program

Acquisition Thru FY 1983

6104.48 Acres

1140 Tracts

\$131.77 Million Land Payments

Storage Capacity Thru FY 1983

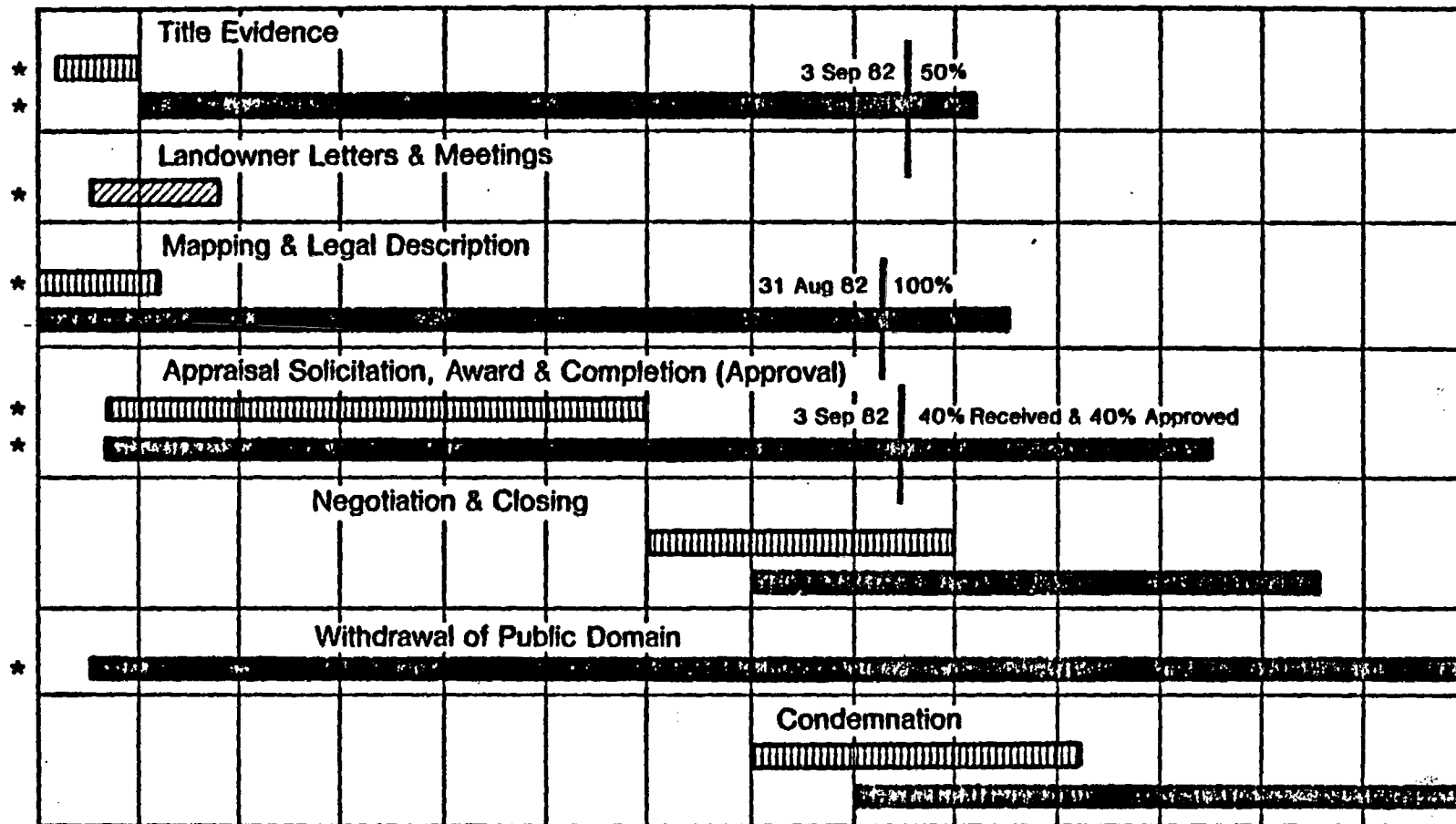
754 Million Barrels Total Storage Capacity

515.25 Million Barrels in Storage

---

# Milestone Schedule — Pinon Canyon Site

20 Dec 81 20 Jan 82 20 Feb 82 20 Mar 82 20 Apr 82 20 May 82 20 Jun 82 20 Jul 82 20 Aug 82 20 Sep 82 20 Oct 82 20 Nov 82 20 Dec 82 20 Jan 83 20 Feb 83  
-30 0 30 60 90 120 150 180 210 240 270 300 330 360 390



Cantonment Area

Remainder of Project

As Applicable

\* Denotes Actions That Have or Will Have Begun Prior to Issuance of a Real Estate Acquisition Directive



US Army Corps  
of Engineers

## Uniform Relocation Assistance

2 June 1971 — 30 September 1983

	<b>Applicants</b>	<b>Payments to Applicants</b>
FY 1983	330	\$ 3.1 Million
Total	11,727	\$47.3 Million

---

## SECTION 301 - ACQUISITION POLICY

- TRY TO ACQUIRE EXPEDITIOUSLY BY NEGOTIATION
- OWNER CAN ACCOMPANY APPRAISER DURING INSPECTION
- NEGOTIATOR MUST INITIALLY OFFER AT LEAST AMOUNT OF APPROVED APPRAISAL
- MUST GIVE OWNER WRITTEN SUMMARY OF BASIS AND AMOUNT OF JUST COMPENSATION
- MONEY MUST BE PAID OR DEPOSITED IN COURT BEFORE POSSESSION BY GOVERNMENT
- NO FORCED MOVE WITHOUT 90-DAYS' NOTICE
- NO COERCIVE PRESSURE BY CONDEMNATION TIME OR DEPOSIT
- NO PRESSURE FOR INVERSE CONDEMNATION
- MUST ACQUIRE UNECONOMIC REMNANT

SECTION 202 - MOVING EXPENSES

- (A) (1) ACTUAL, REASONABLE MOVING EXPENSES
  - (2) ACTUAL DIRECT LOSSES OF TANGIBLE PERSONAL PROPERTY FROM MOVING OR DISCONTINUING BUSINESS OR FARM OPERATION, BUT NOT TO EXCEED REASONABLE COST OF RELOCATING SUCH PROPERTY
  - (3) ACTUAL, REASONABLE EXPENSES OF SEARCHING FOR REPLACEMENT BUSINESS OR FARM
- (B) PAYMENT FOR DWELLING DISPLACEES IN LIEU OF (A) CONSISTING OF:
- MOVING ALLOWANCE UP TO \$300 (SCHEDULE) AND DISLOCATION ALLOWANCE OF \$200
- (C) PAYMENT FOR BUSINESSES AND FARMS IN LIEU OF (A)  
NOT LESS THAN \$2,500 OR MORE THAN \$10,000  
BASED ON "AVERAGE ANNUAL NET EARNINGS" DURING  
LAST 2 TAXABLE YEARS OR OTHER MORE EQUITABLE PERIOD

## SECTION 203

### REPLACEMENT HOUSING FOR HOMEOWNERS

- MUST HAVE OWNED FOR 180 DAYS BEFORE NEGOTIATIONS
- MAXIMUM \$15,000 - INCLUDES:
  - 1 - DIFFERENTIAL HOUSING PAYMENT - DIFFERENCE BETWEEN ACQUISITION COST OF OCCUPIED DWELLING AND REASONABLE COST OF COMPARABLE, DECENT, SAFE AND SANITARY REPLACEMENT
  - 2 - INCREASED INTEREST COST, BASED ON BALANCE AND TERM OF OLD MORTGAGE AND DISCOUNTED TO PRESENT VALUE
  - 3 - CLOSING COSTS ON REPLACEMENT HOME
- MUST PURCHASE AND OCCUPY REPLACEMENT DWELLING WITHIN 1 YEAR

SECTION 204

REPLACEMENT HOUSING FOR TENANTS AND OTHERS

- ACTUALLY, LAWFULLY OCCUPIED 90 DAYS BEFORE  
NEGOTIATIONS (AND NOT ELIGIBLE UNDER 203)
  
- MAXIMUM \$4,000, CONSISTING OF EITHER:
  - 1. RENTAL DIFFERENTIAL FOR DECENT  
SAFE AND SANITARY REPLACEMENT  
OR
  
  - 2. DOWN PAYMENT, WITH DISPLACEE  
MATCHING ANYTHING OVER \$2,000

## SECTION 205

### ADVISORY SERVICES

- INFO ON REPLACEMENT DWELLINGS AND BUSINESSES
- 205(c)(3) - ASSURE AVAILABILITY OF DECENT, SAFE AND SANITARY REPLACEMENT DWELLINGS
- ASSIST BUSINESSES AND FARMS
- INFO ON OTHER FEDERAL AND STATE ASSISTANCE PROGRAMS



**ATTACHMENT 5**

SIXTH BIMONTHLY MEETING  
WITH SALT STATES REPRESENTATIVES AND NRC

May 31, 1984

CAPITOL HOLIDAY INN  
550 C STREET SW  
WASHINGTON, D.C.

TRANSPORTATION AGENDA

- A. Introductory Remarks R. W. Peterson
1. Agenda Overview
  2. DOE Transportation Programs
  3. ONWI Transportation Program
  4. Transportation Scenarios
  5. Types and Quantities of Waste Shipments
  6. Transportation Modes
  7. Overview of Transportation Work to Date
- B. Transportation Regulations R. W. Peterson
1. NRC - Packaging J. C. Allen
  2. DOT - Transportation
- C. Routing T. I. McSweeney
1. Regional
  2. State
  3. Site-Specific
- D. Logistics/Economics/Risk Analyses T. I. McSweeney
1. Models/Computer Codes
  2. National/Regional
  3. Site-Specific
- E. Accidents R. W. Peterson
1. Types and Probabilities
  2. Natural Events
  3. Sabbotage
  4. Simulation Testing
  5. Record to Date
- F. Emergency Response J. C. Allen
1. Federal - DOT, NRC, FEMA, DOE
  2. State/Local

## RADIOLOGICAL EMERGENCY RESPONSE FOR TRANSPORTATION

### I. Federal Level

#### A. Federal Response to Emergencies

- Coordination - Federal Radiological Emergency Response Plan (FRERP)
- Monitoring and Assessment - Federal Radiological Monitoring and Assessment Plan (FRMAP)

#### B. Federal Planning Assistance

- State/Local Guidance - Guidance for Developing State and Local Radiological Emergency Response Plans and Preparedness for Transportation Accidents (FEMA-REP-5)

### II. State Level

#### A. Mississippi

Mississippi Natural Disaster Plan

Mississippi Radiological Emergency Response Plan

#### B. Louisiana

Louisiana Disaster Preparedness Plan

Peacetime Radiological Response Plan

#### C. Texas

Texas Emergency Management Plan  
(Annex L to Part 1 - Peacetime Radiological Incidents)

#### D. Utah

Utah Natural Disaster Plan

Utah Radiological Emergency Response Plan

# **Transportation of Nuclear Waste to a Repository**

## **Federal Regulations**

- The U.S. Nuclear Regulatory Commission (NRC) provides minimum standards covering the design, construction, and testing of packaging used for transporting hazardous radioactive material. The NRC also issues certificates of compliance with its standards (10 CFR 71).
- The U.S. Department of Transportation (DOT) regulates transportation safety and sets standards for shippers and carriers (49 CFR 171-178).

## **Containers or Casks**

- Casks are designed and constructed to withstand severe accidents without release of radioactive material.
- Truck casks weigh approximately 25 tons.
- Rail casks weigh up to 100 tons.
- Casks are made of several layers of stainless steel and a layer of radiation shielding material such as lead. Some casks will also have neutron shielding.
- Casks must be certified according to NRC standards prior to use.
- Casks are inspected and tested during manufacture and prior to being placed in service.
- Casks must be recertified periodically for continued use.

## **Routing**

- DOT regulations require highway carriers to use the interstate highway system.
- State governments, in consultation with local governments, can also designate preferred highway routes as provided for in 49 CFR 177.825.
- There are no specific railroad routing regulations for nuclear waste.

## **Types and Numbers of Shipments**

- All shipments will be in dry solid form—no liquids will be associated with the radioactive material.
- A typical nuclear power plant, which produces enough electricity for about 600,000 households, normally discharges about 30 tons of spent fuel a year.
- At the turn of the century, it is estimated that there will be an average of 1 to 2 rail shipments per day and 2 to 3 truck shipments per day to the first repository.

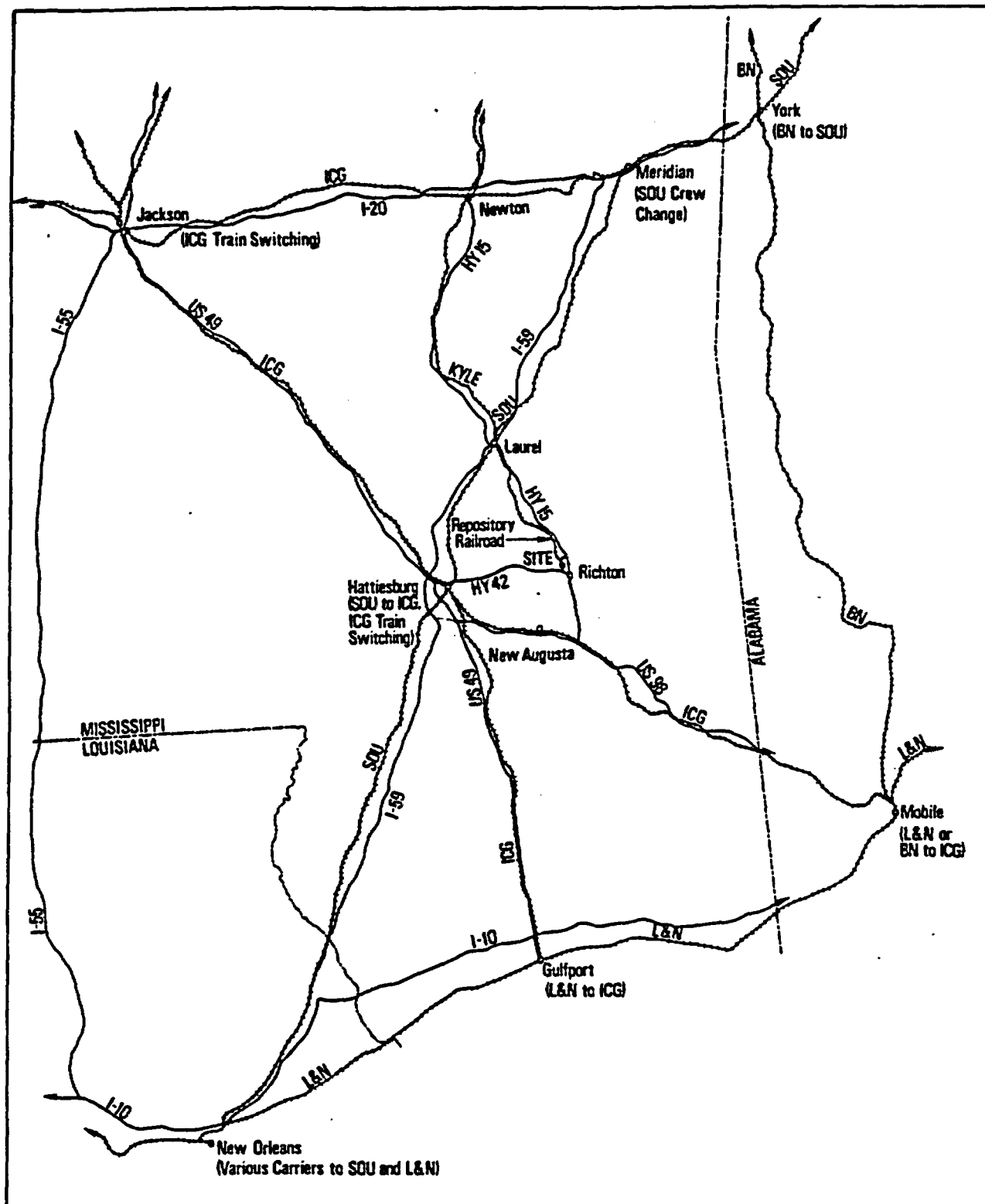
## **Accidents**

- In shipping over 5,500 spent fuel elements during the past 20 years, there has never been an injury or death to carrier personnel or to the public that can be attributed to the radioactive nature of the cargo. There have been only two transportation accidents of any kind.
- The federal government has the capability and resources nationwide to assist state and local authorities in coping with a radiological hazard if it should occur.

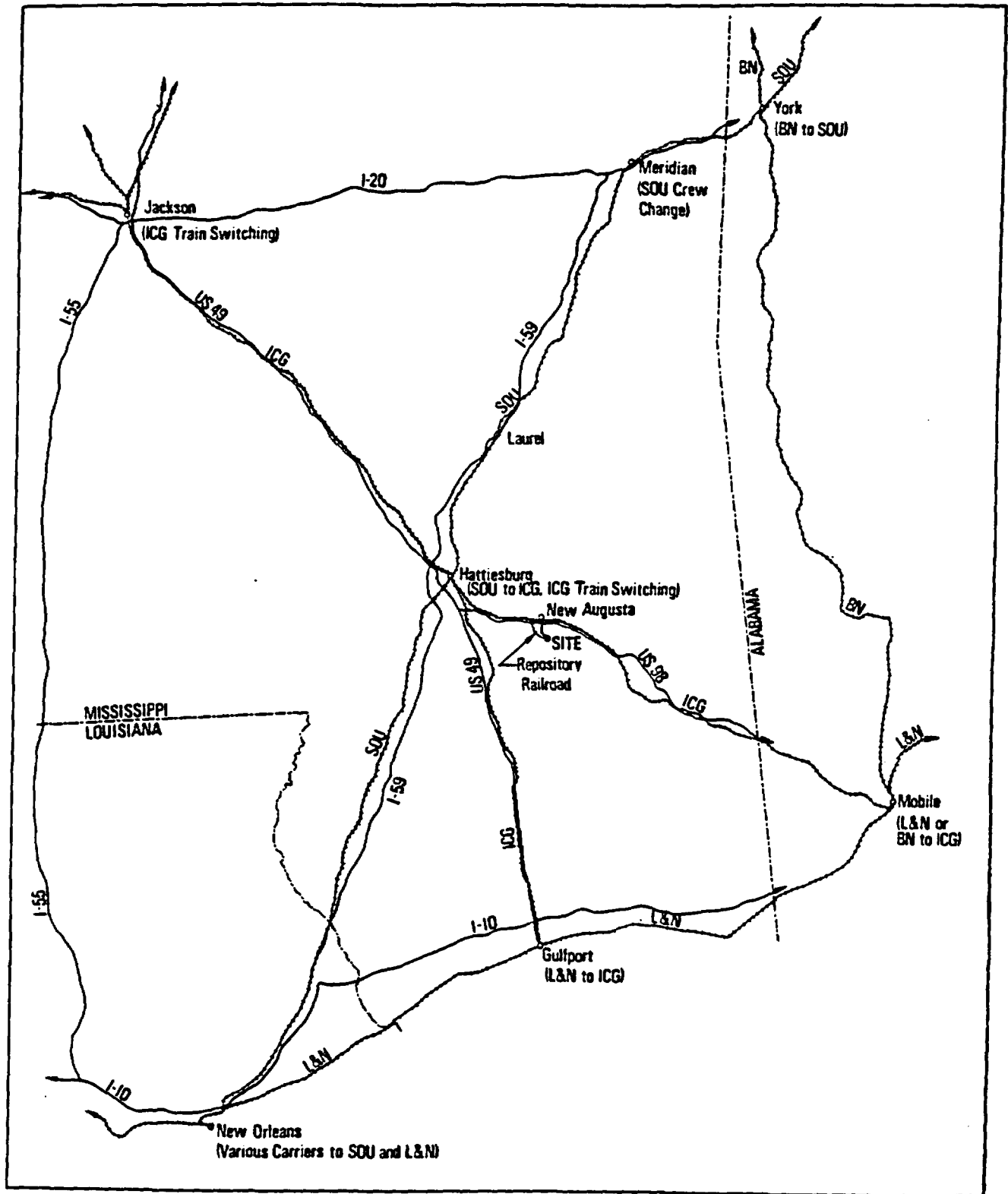
## **Overall Risk From Transportation**

- A person living next to the final route into the repository will receive less than 1 percent of natural background radiation from all shipments.
- No radiological injuries or deaths are predicted to result directly from transportation accidents.

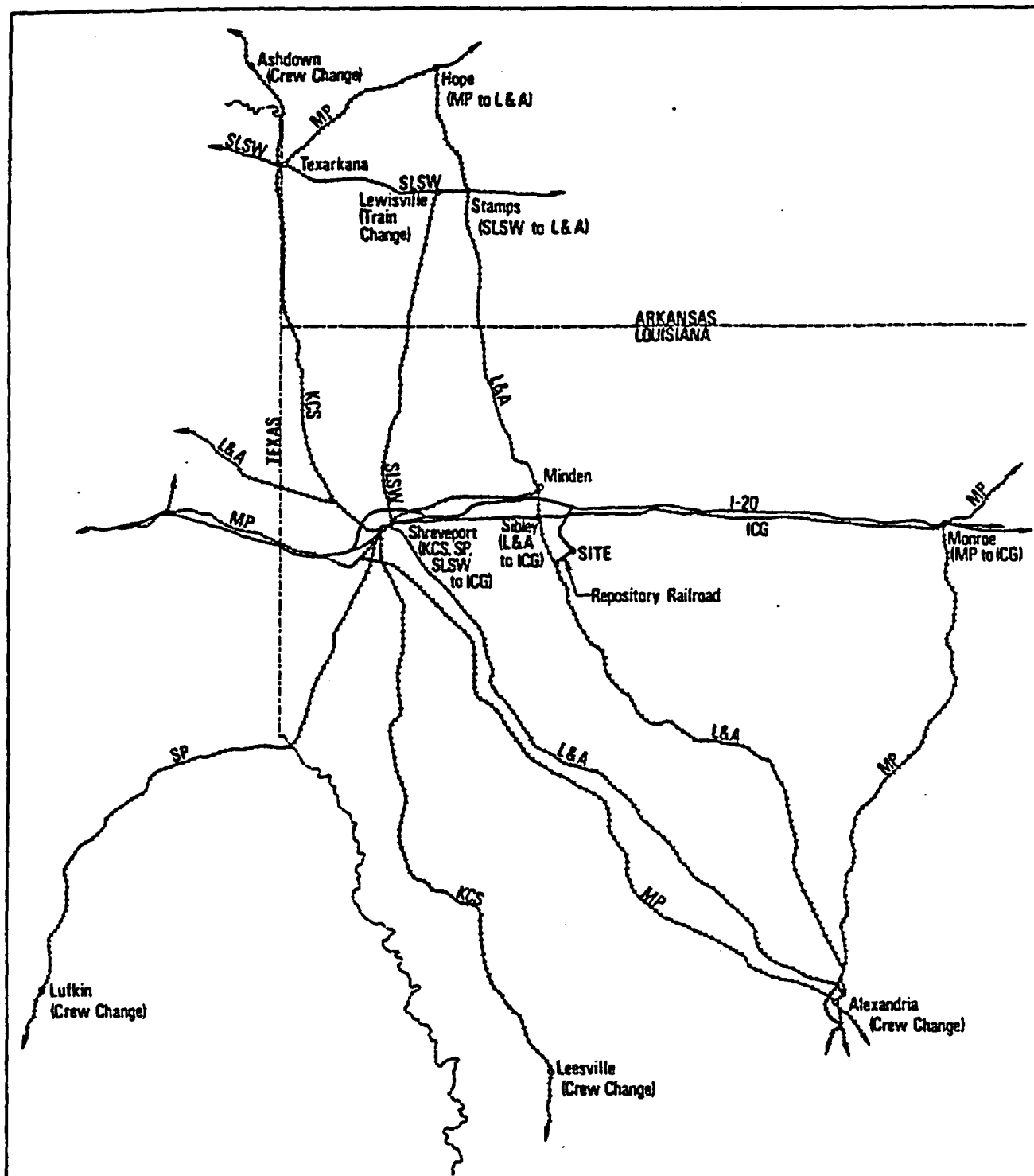
This publication was prepared by Battelle's Office of Nuclear Waste Isolation, Columbus, Ohio, under contract with the U.S. Department of Energy.



Major Regional Railroad and Highway Routes - Richton Dome

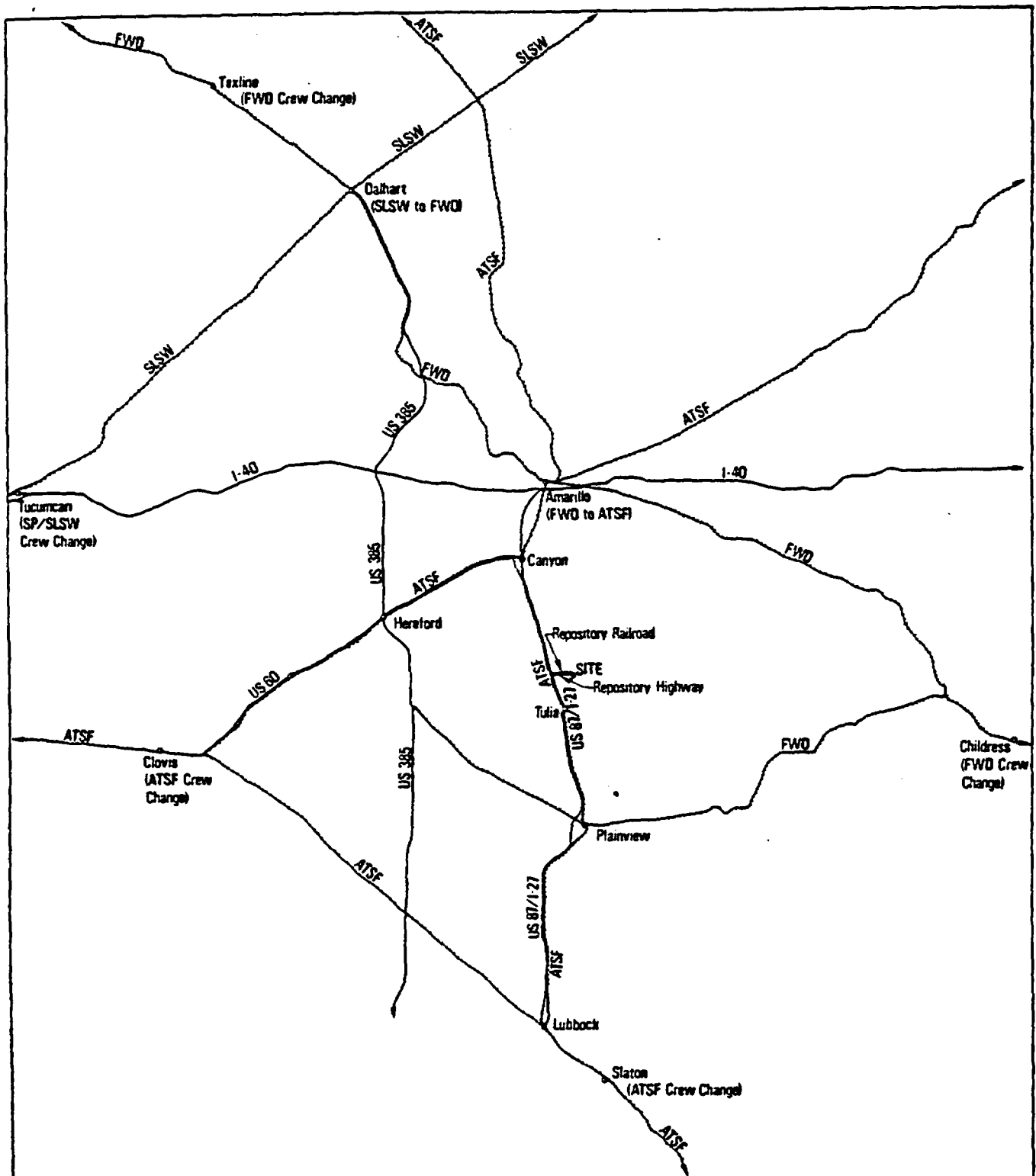


Major Regional Railroad and Highway Routes - Cypress Creek



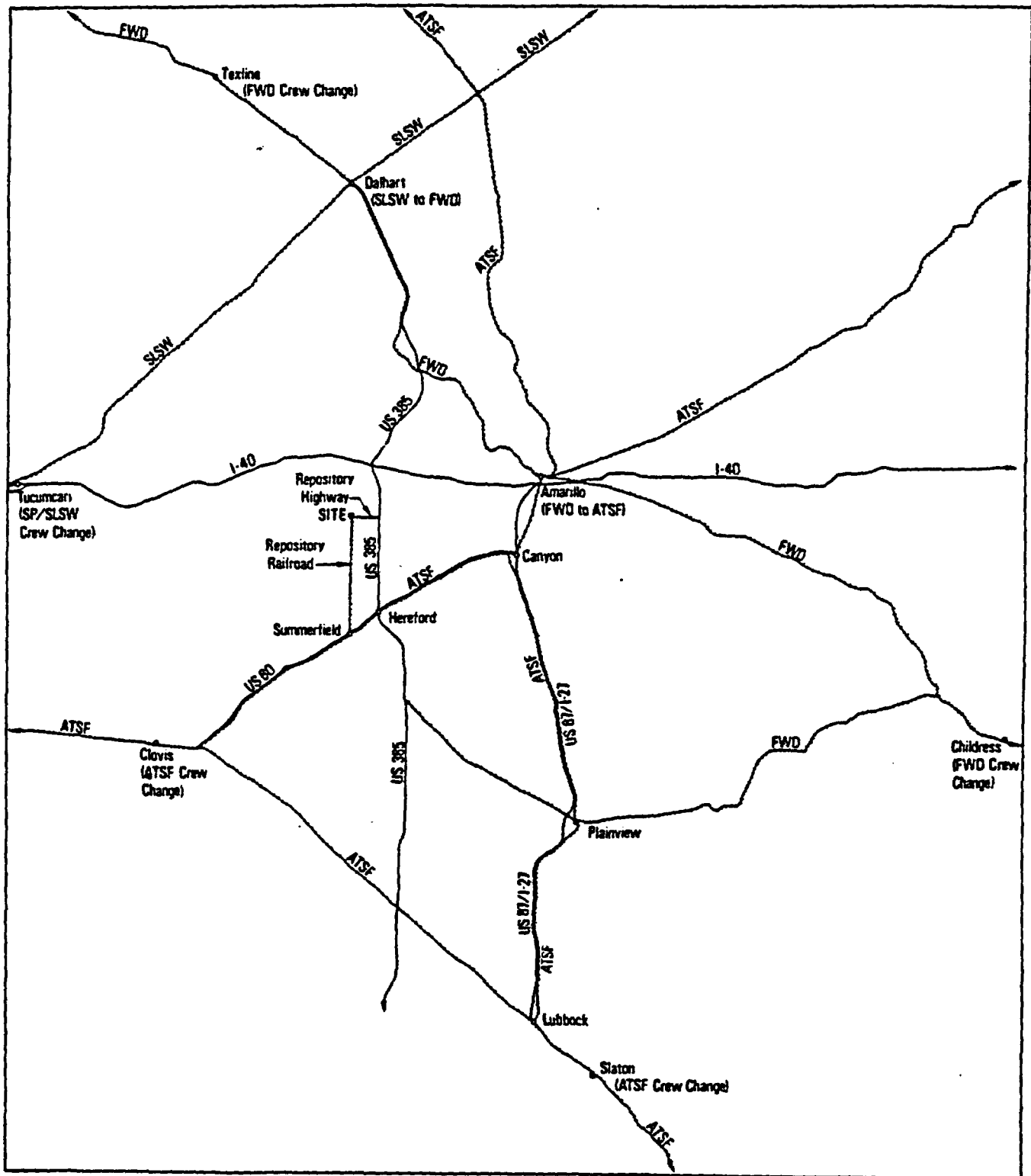
Major Regional Railroad and Highway Routes - Vacherie



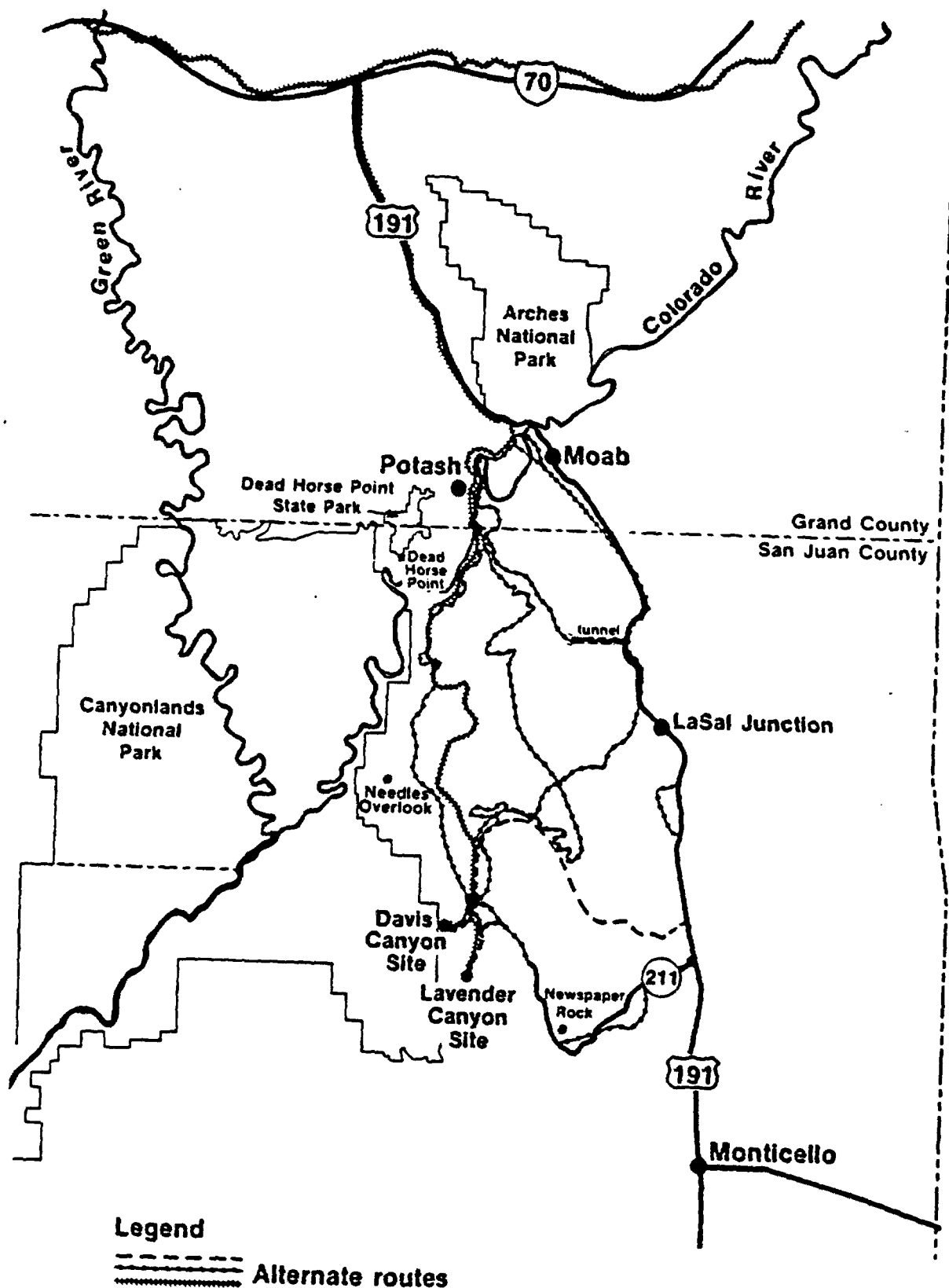


Major Regional Railroad and Highway Routes - Swisher

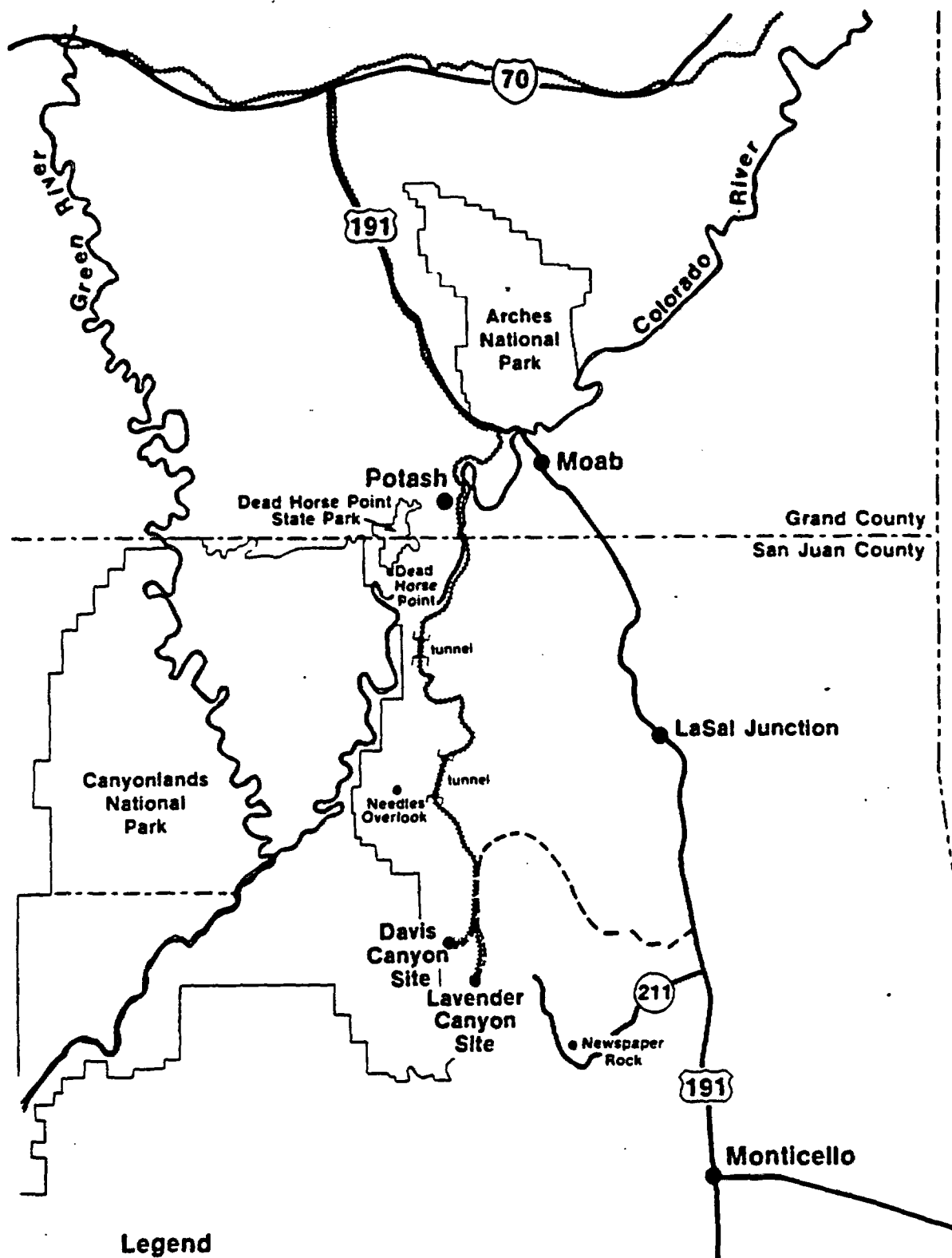
ATTACHMENT 6



Major Regional Railroad and Highway Routes - Deaf Smith



**Alternative Highway and  
Railroad Access Routes  
Davis and Lavender Canyon Sites**



**Legend**

----- Representative route

**Representative Highway and  
Railroad Access Routes  
Davis and Lavender Canyon Sites**

SALT ENVIRONMENTAL  
ASSESSMENTS

R.C. WUNDERLICH  
MAY 31, 1984

## EA STATUS

- LATE MARCH AND EARLY MAY SALT SITE EAs PROVIDED TO THE STATES AND NRC
- COMPARATIVE EVALUATION METHODOLOGY AND SUPPORTING DATA SHEETS PROVIDED TO THE STATES AND NRC IN APRIL
- SEVEN DRAFT EAs TO BE PROVIDED TO DOE-HQ ON JUNE 1
- DOCUMENTS ARE APPROXIMATELY 70-85% COMPLETE
- PLANNING EFFORT UNDERWAY TO COMPLETE EAs PRIOR TO RELEASE FOR PUBLIC COMMENT