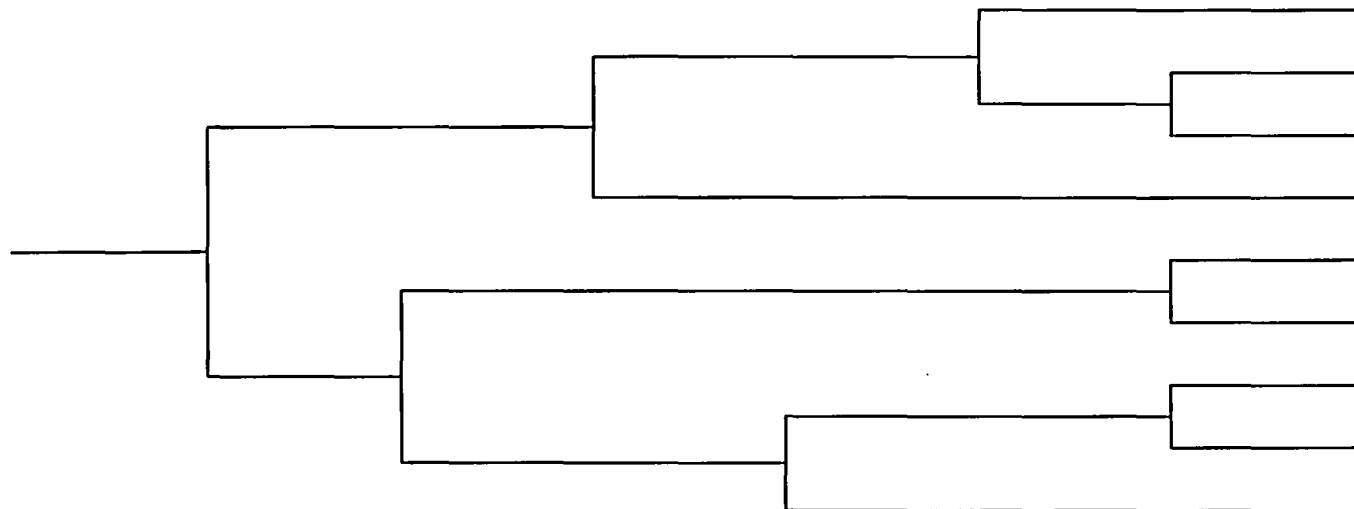


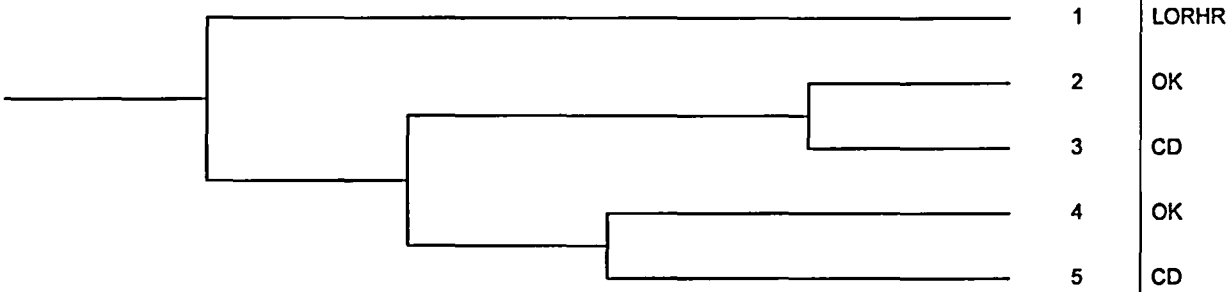
	POS I	Leak Isolated on Level III	Automatic Injection	Manual Low Pressure Injection Leak Isolated	Manual Low Pressure Injection NOT Isolated	Recover DHR before press. control needed leak Isolated	Operator Controls RCS Pressure	Manual High Pressure Injection at pressure	Containment Venting and Make-up Water		
	LOI	ISOL	AECCS	MINJ	MINJX	RHRREC	SRV	MINJY	CV	#	END-STATE-NAMES
<p>Loss of Inventory - BWR POS-1</p>											

POS 2	Leak Isolated	Automatic Injection	Manual Injection (any source) Leak Isolated	Manual Injection Leak NOT Isolated	Recovery of DHR - Leak Isolated	Long Term Makeup	#	END-STATE-NAMES
LOI	ISOL	AECCS	MINJ	MINJX	RHRREC	LCOOL		
								
Loss of Inventory - BWR POS-2								

LOI2 -2003/10/30 Page 2

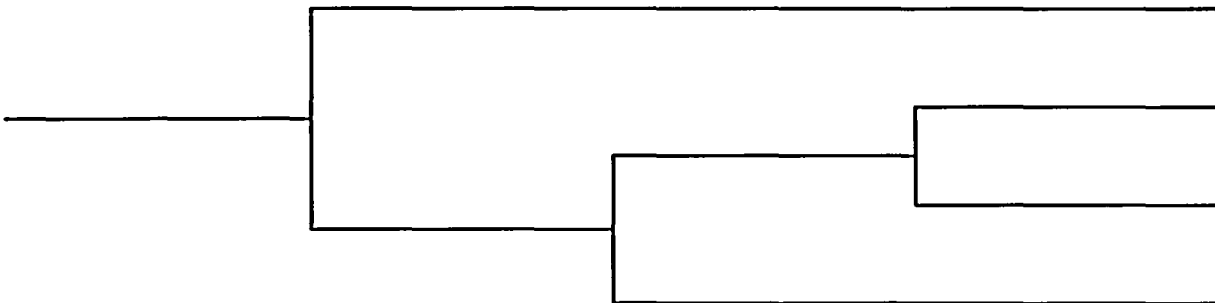
POS 3	Leak Isolated	Manual Injection (any source) Leak Isolated	Manual Injection Leak NOT Isolated	Recovery of DHR - Leak Isolated	Long Term Makeup		
LOI	ISOL	MINJ	MINJX	RHRREC	LCOOL	#	END-STATE-NAMES
						1	OK
						2	OK
						3	CD
						4	CD
						5	OK
						6	CD
						7	CD
<p>Loss of Inventory - BWR POS-3</p>							

	POS-2	Emergency AC	AC-Indep. Injection	Recover AC in 8 hours	Recover AC in 20 hours before Battery Depletes and CD		
	LOOP	EAC	ACI	RLOOP8	RLOOP20	#	END-STATE-NAMES



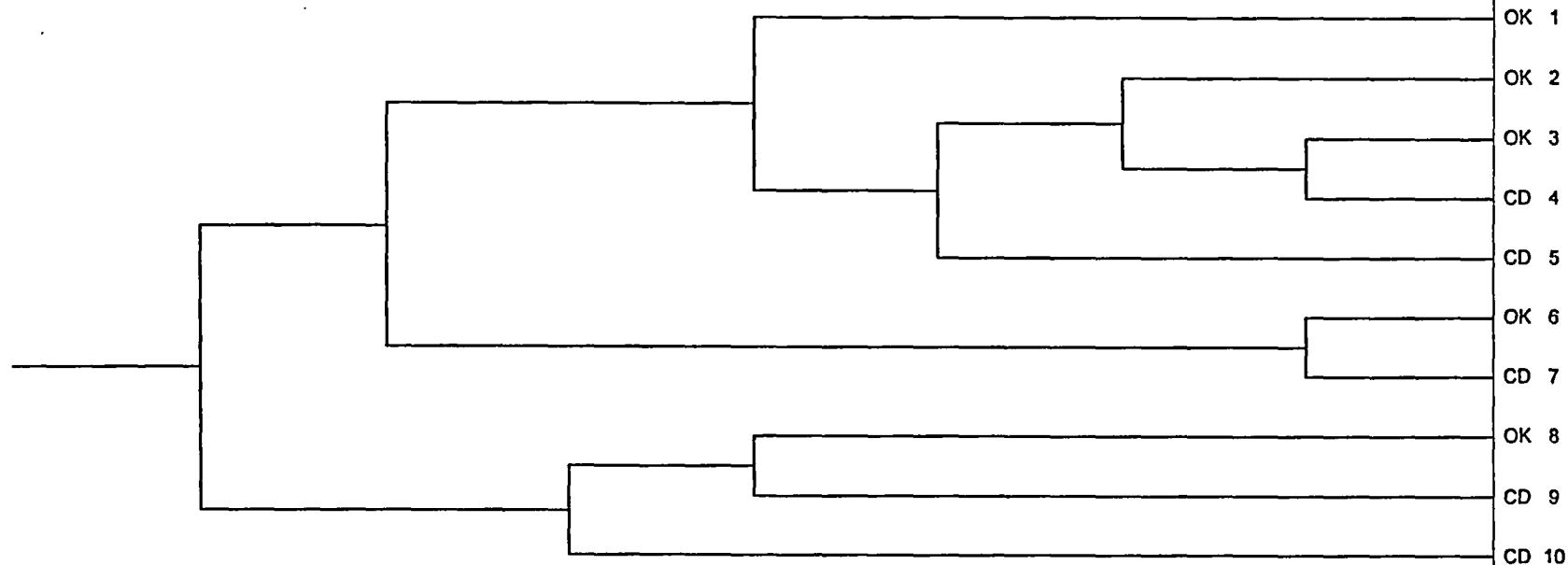
Loss of Offsite Power - BWR POS-2

POS 1	DHR Recovery before RHR shutoff head reached	Manual Injection and RCS Pressure Control	Manual High Pressure Injection at Pressure	Containment Venting and Make-up Water	#	END-STATE-NAMES
LORHR	RHRREC	MINJ&SRV	MINJY	CV		
<pre> graph LR Start(()) --- B1[] B1 --- B2[] B1 --- B3[] B2 --- B4[] B2 --- B5[] B3 --- B6[] B3 --- B7[] B4 --- B8[] B4 --- B9[] B5 --- B10[] B5 --- B11[] B6 --- B12[] B6 --- B13[] B8 --- 2 B9 --- 3 B10 --- 4 B11 --- 5 B12 --- 5 B13 --- 6 </pre> <p>Loss of RHR - BWR POS-1</p>					1	OK
					2	OK
					3	CD
					4	OK
					5	CD
					6	CD

POS 2	DHR Recovery Before Level 3 Reached	Manual Injection	Long Term Makeup	#	END-STATE-NAMES
LORHR	RHRREC	MINJ	LCOOL		
					1 OK 2 OK 3 CD 4 CD
Loss of RHR - BWR POS-2					

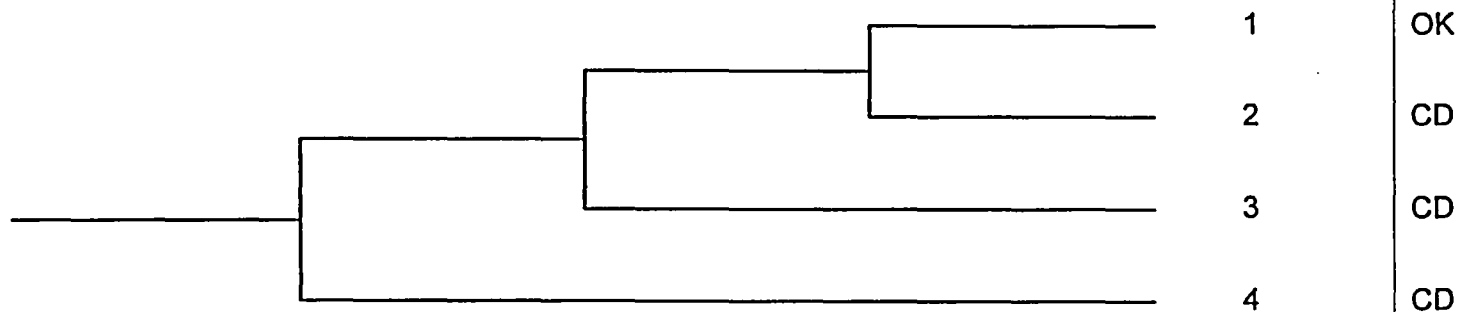
LORHR2 -2003/10/30Page 7

	Loss of Inventory	RCS Injection	Leak Isolated before RWST Depletion	Leak Isolated before Uncovery	SG Cooling	Vent Path for Feed and Bleed	RHR recovery before RWST depletion	RWST Makeup Before CD		
	LOI	FEED	LEAK-STOP	LEAK-STOP2	SG	BLEED	RHR-R	RWSTMU		END#STATE-NAMES



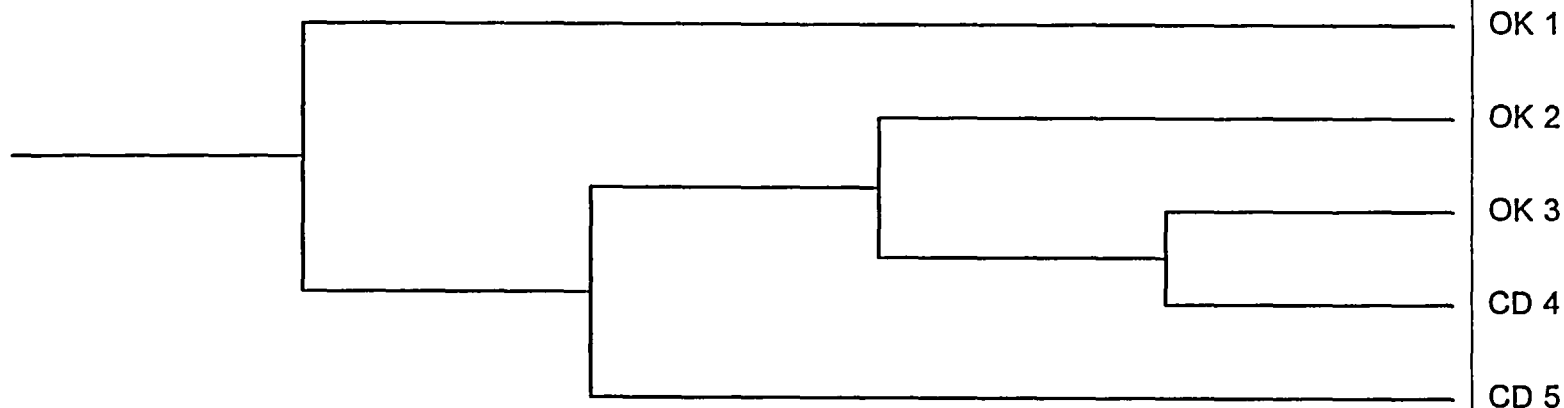
Loss of Inventory - PWR POS-1

Loss of Inventory	RCS Injection Before CD	Terminated before RCS and makeup Depletion	RHR recovery before water inventory depleted		
LOI	FEED	LEAK-STOP	RHR-R	#	END-STATE-NAMES



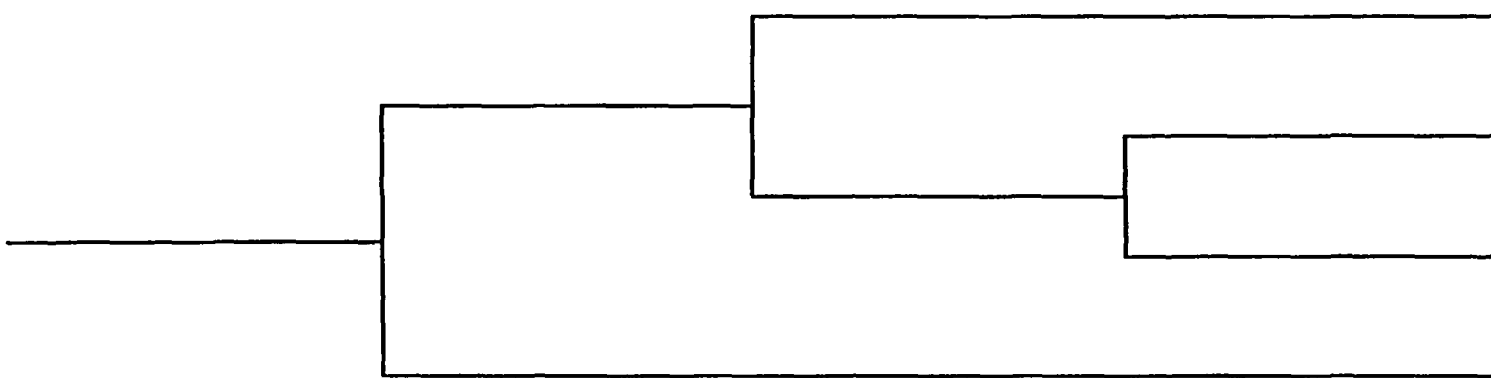
Loss of Inventory - PWR POS-3

Loss of Level Control	Steam Generator Cooling	RCS Injection And Bleed	Recover RHR before RWST Depletion	Make-up to RWST before CD		
LOLC	SG	FEED&BLEED	RHR-R	RWSTMU		#



Loss of Level Control - PWR POS-1

Loss of Level Control	RCS Injection before CD	Recover RHR before RWST Depletion	Make-up to RWST before CD		
LOLC	FEED	RHR-R	RWSTMU	#	



Loss of Level Control - PWR POS-2

Loss of Offsite Power	AC Power	Gravity Feed before CD	Recovery of Power (EDG or Offsite) 4 hours	Recovery of Power (EDG or Offsite) 18 hours		
LOOP	EAC	GRAVITY	RLOOP4	RLOOP18	#	END-STATE-NAMES
<pre> graph LR Start(()) --- B1[] B1 --- B2[] B1 --- B3[] B2 --- B4[] B2 --- B5[] B3 --- B6[] B3 --- B7[] B4 --- B8[] B4 --- B9[] B5 --- B10[] B5 --- B11[] B6 --- S1[1] B7 --- S2[2] B8 --- S3[3] B9 --- S4[4] B10 --- S5[5] B11 --- S6[] style B1 fill:none,stroke:none style B2 fill:none,stroke:none style B3 fill:none,stroke:none style B4 fill:none,stroke:none style B5 fill:none,stroke:none style B6 fill:none,stroke:none style B7 fill:none,stroke:none style B8 fill:none,stroke:none style B9 fill:none,stroke:none style B10 fill:none,stroke:none style B11 fill:none,stroke:none style S6 fill:none,stroke:none </pre> <p>Loss of Offsite Power - PWR POS-2</p>						<p>1 LORHR</p> <p>2 OK</p> <p>3 CD</p> <p>4 OK</p> <p>5 CD</p>

	Loss of RHR in POS-1	Recover RHR before Boiling	Steam Generator Cooling	RCS Injection And Bleed	Recover RHR before RWST Depletion	Make-up to RWST before CD		
	LORHR1	RHR-S	SG	FEED&BLEED	RHR-R	RWSTMU	#	END-STATE-NAMES
<p>Loss of RHR - PWR POS-1</p>								
							1	OK
							2	OK
							3	OK
							4	OK
							5	CD
							6	CD

Loss of RHR in POS-2	Recover RHR before Boiling	RCS Injection	Recover RHR before RWST Depletion	Make-up to RWST before CD		
LORHR2	RHR-S	FEED	RHR-R	RWSTMU	#	END-STATE-NAMES
<p>Loss of RHR - PWR POS-2</p>						