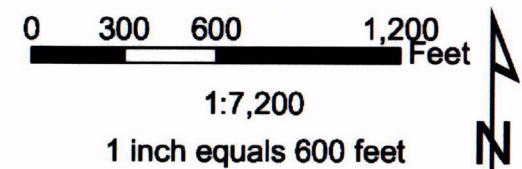


Legend

Property Boundaries

- SCA Property Line
- Property Line "Other"
- Slurry Wall
- Clay Dike
- Slag Piles
- Subsurface Soil Sample Location

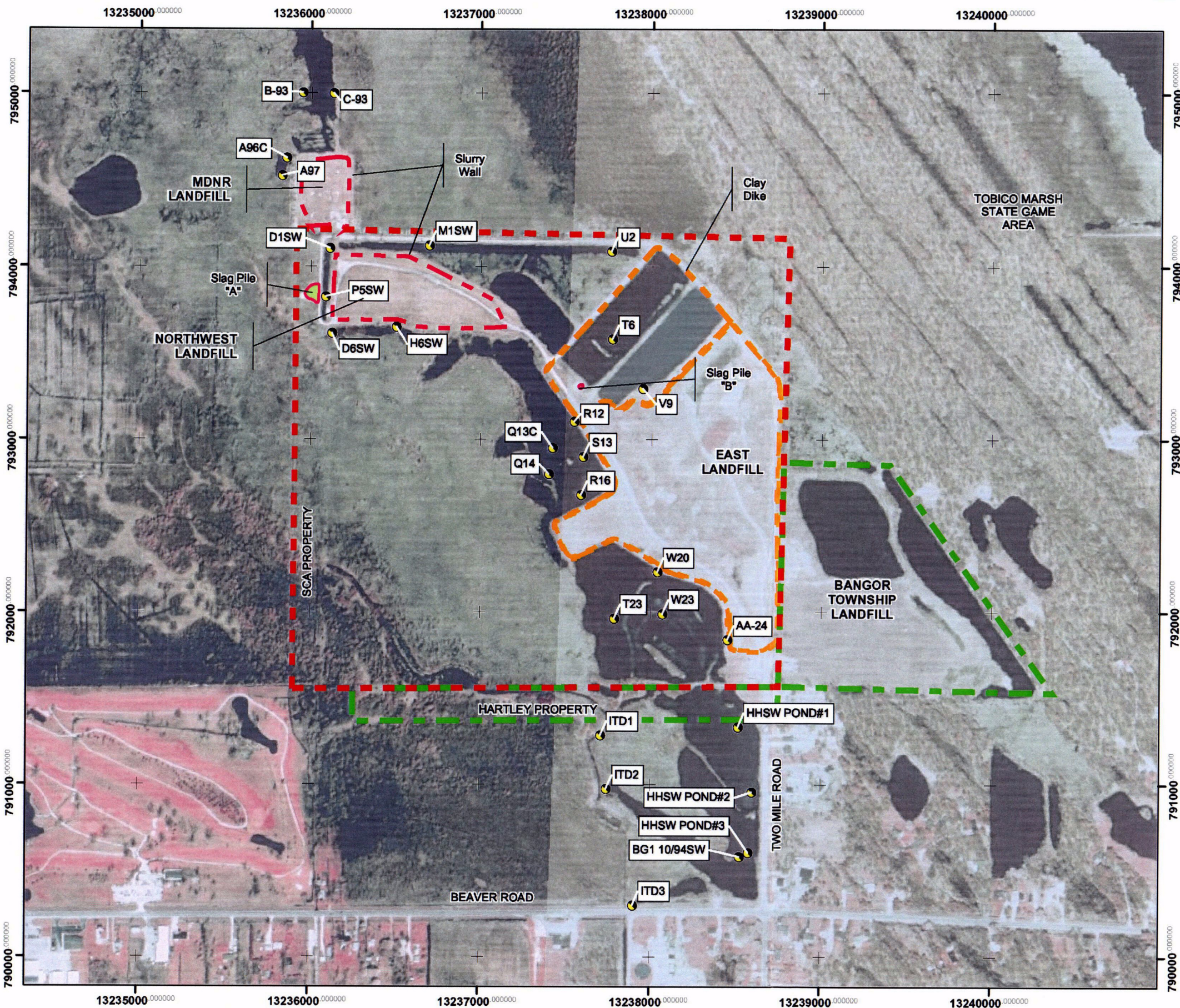


NOTES:

- Survey coordinates are referenced to Michigan State Plane South, NAD 83, feet.
- Samples collected from October 1994 to September 1995.

Source: Michigan Department of Natural Resources (MDNR), Forestry, Mineral and Fire Management Division, Resource Mapping and Aerial Photography (RMAP), 1998.

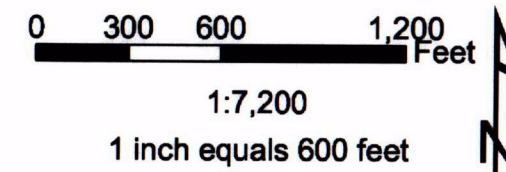
PROJECT: SCA HARTLEY & HARTLEY LANDFILL SITE KAWKAWLIN TOWNSHIP, MICHIGAN			
SHEET TITLE: FIGURE 4-7 SUBSURFACE SOIL SAMPLE LOCATIONS			
DRAWN BY: C. HANKLEY	SCALE: AS NOTED	PROJ. NO. 00-06115.04	
CHECKED BY: G. MCLINN		FILE NO. BGMN_Excel4.mxd	
APPROVED BY: J. WEDEKIND	DATE PRINTED:		
DATE: NOVEMBER 2003			
		744 Heartland Trail Madison, WI 53717 - 1934	
		P.O. Box 8923 53708-8923 Phone 608-831-4444 Fax: 608-831-3334	



Legend

Property Boundaries

- SCA Property Line
- Property Line "Other"
- Slurry Wall
- Clay Dike
- Slag Piles
- Surface Water Sample Location



NOTES:

- (1) Survey coordinates are referenced to Michigan State Plane South, NAD 83, feet.
- (2) Samples collected from October 1994 to May 2003.

Source: Michigan Department of Natural Resources (MDNR), Forestry, Mineral and Fire Management Division, Resource Mapping and Aerial Photography (RMAP), 1998.

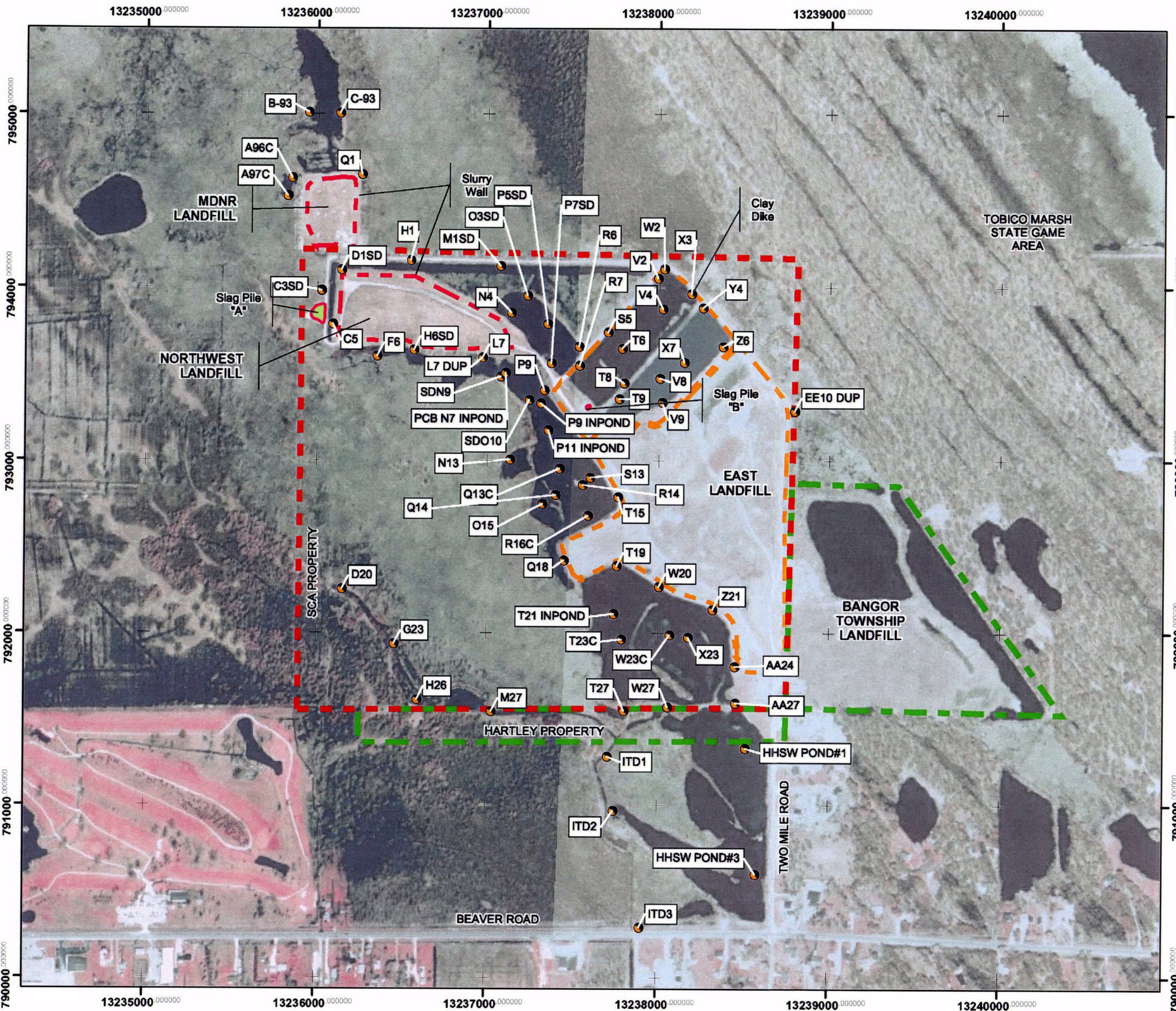
PROJECT: SCA HARTLEY & HARTLEY LANDFILL SITE
KAWKAWLIN TOWNSHIP, MICHIGAN

SHEET TITLE: FIGURE 4-8 SURFACE WATER
SAMPLE LOCATIONS

DRAWN BY: C. HANKLEY	SCALE: AS NOTED	PROJ. NO. 00-06115.04
CHECKED BY: G. MCLINN		FILE NO. BGMN_Excel5.mxd
APPROVED BY: J. WEDEKIND	DATE PRINTED:	
DATE: NOVEMBER 2003		



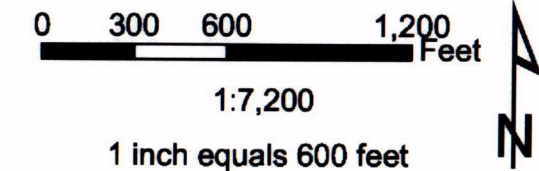
744 Heartland Trail
Madison, WI 53717 - 1934
P.O. Box 8923 53708-8923
Phone 608-831-4444
Fax 608-831-3334



Legend

Property Boundaries

- SCA Property Line
- Property Line "Other"
- Clay Dike
- Slurry Wall
- Slag Piles
- Sediment Sample Location



NOTES:

- (1) Survey coordinates are referenced to Michigan State Plane South, NAD 83, feet.
- (2) Samples collected from October 1994 to May 2003.

Source: Michigan Department of Natural Resources (MDNR), Forestry, Mineral and Fire Management Division, Resource Mapping and Aerial Photography (RMAP), 1998.

PROJECT: SCA HARTLEY & HARTLEY LANDFILL SITE
KAWKAWLIN TOWNSHIP, MICHIGAN

SHEET TITLE: FIGURE 4-9 SEDIMENT
SAMPLE LOCATIONS

DRAWN BY: C. HANKLEY	SCALE: AS NOTED	PROJ. NO. 00-06115.04
CHECKED BY: G. MCLINN		FILE NO. BGMN_Excel3.mxd
APPROVED BY: J. WEDEKIND	DATE PRINTED:	
DATE: NOVEMBER 2003		

RMT

744 Heartland Trail
Madison, WI 53717 - 1934
P.O. Box 8923 53708-8923
Phone 608-831-4444
Fax: 608-831-3334