

Figure 3-14  
Lake Huron Hydrograph  
SCA Hartley & Hartley Landfill Site  
Kawkawlin Township, Michigan

Source: [http://www.lre.usace.army.mil/index.cfm?chn\\_ID=1383&lake\\_id=2](http://www.lre.usace.army.mil/index.cfm?chn_ID=1383&lake_id=2)

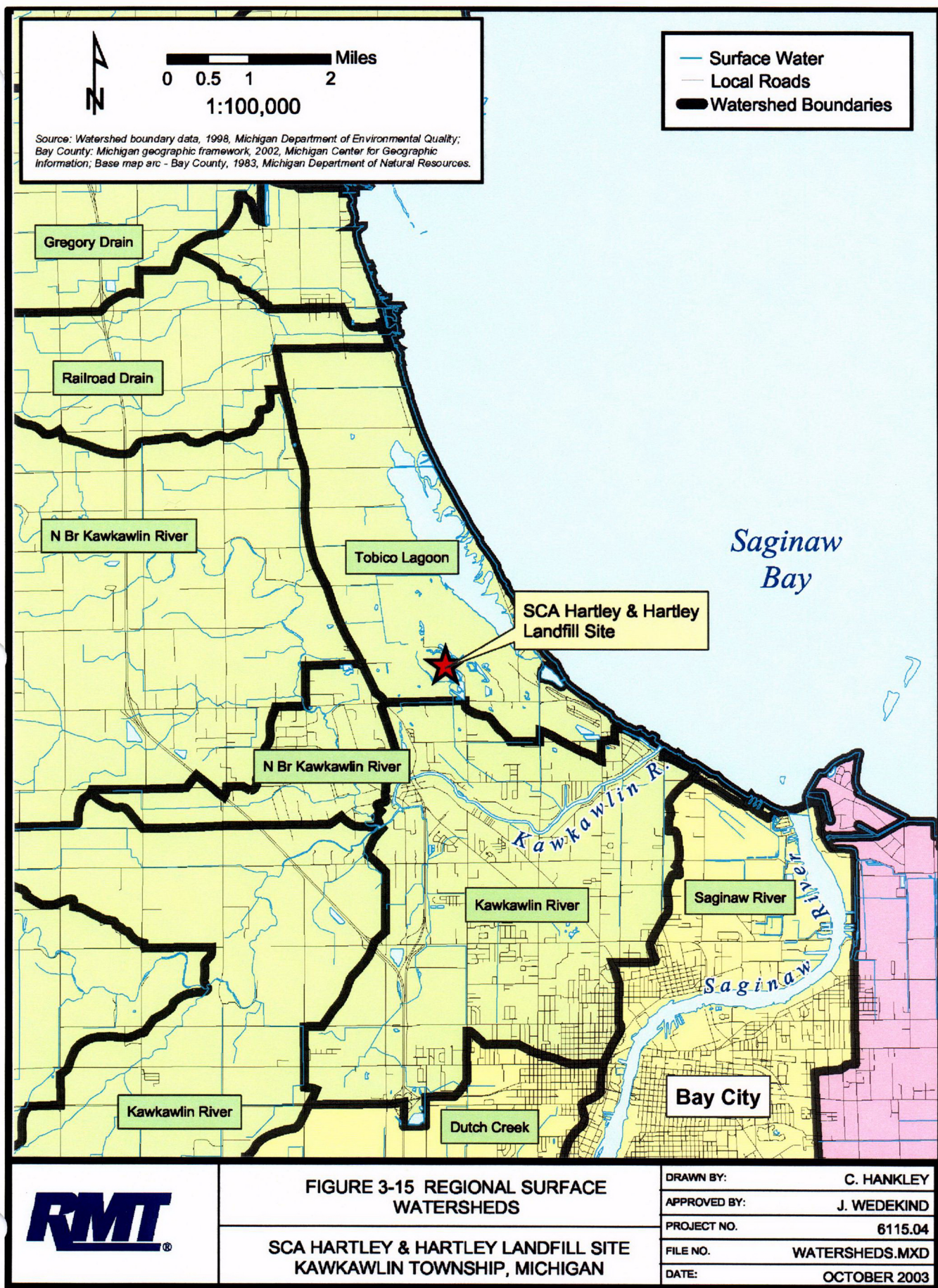


FIGURE 3-15 REGIONAL SURFACE WATERSHEDS

SCA HARTLEY & HARTLEY LANDFILL SITE  
 KAWKAWLIN TOWNSHIP, MICHIGAN

|              |                |
|--------------|----------------|
| DRAWN BY:    | C. HANKLEY     |
| APPROVED BY: | J. WEDEKIND    |
| PROJECT NO.  | 6115.04        |
| FILE NO.     | WATERSHEDS.MXD |
| DATE:        | OCTOBER 2003   |



# Legend

 Site Boundary

SCA Hartley & Hartley  
Landfill Site

Bay County, MI

Saginaw  
Bay

0 250 500 1,000 Feet

1:12,000

## FIGURE 3-16 AERIAL PHOTOGRAPHY

Source: 1998 series USGS digital orthophoto quadrangles. 2001. Michigan Department of Natural Resources (MDNR), Forestry, Mineral and Fire Management Division, Resource Mapping and Aerial Photography (RMAP); Bay County thematic mapper, 30 meter image, 1997. Michigan Center for Geographic Information.

SCA HARTLEY & HARTLEY LANDFILL SITE  
KAWKAWLIN TOWNSHIP, MICHIGAN

DRAWN BY: C. HANKLEY

APPROVED BY: J. WEDEKIND

PROJECT NO. 6115.04

FILE NO. AERIALPHOTO.MXD

DATE: OCTOBER 2003

**RMT**





0 0.5 1 2 Miles

1:100,000

Source: FEMA, Q3 flood data, 1996; Michigan Center for Geographic Information, Michigan geographic framework, 2002; Base map arc - Bay County, Michigan Department of Natural Resources, 1983.

- County Boundary
- Surface Water
- Local Roads

### Flood Zone

- A - An area inundated by 100-year flooding, for which no BFEs (Base Flood Elevations) have been determined.
- AE - An area inundated by 100-year flooding, for which BFEs have been determined.
- ANI - An area that is located within a community or county that is not mapped on any published FIRM (Flood Insurance Rate Map).
- X - An area that is determined to be outside the 100- and 500-year flood plains.
- X500 - An area inundated by 500-year flooding; an area inundated by 100-year flooding with average depths of less than 1 foot or with drainage areas less than 1 square mile; or an area protected by levees from 100-year flooding.

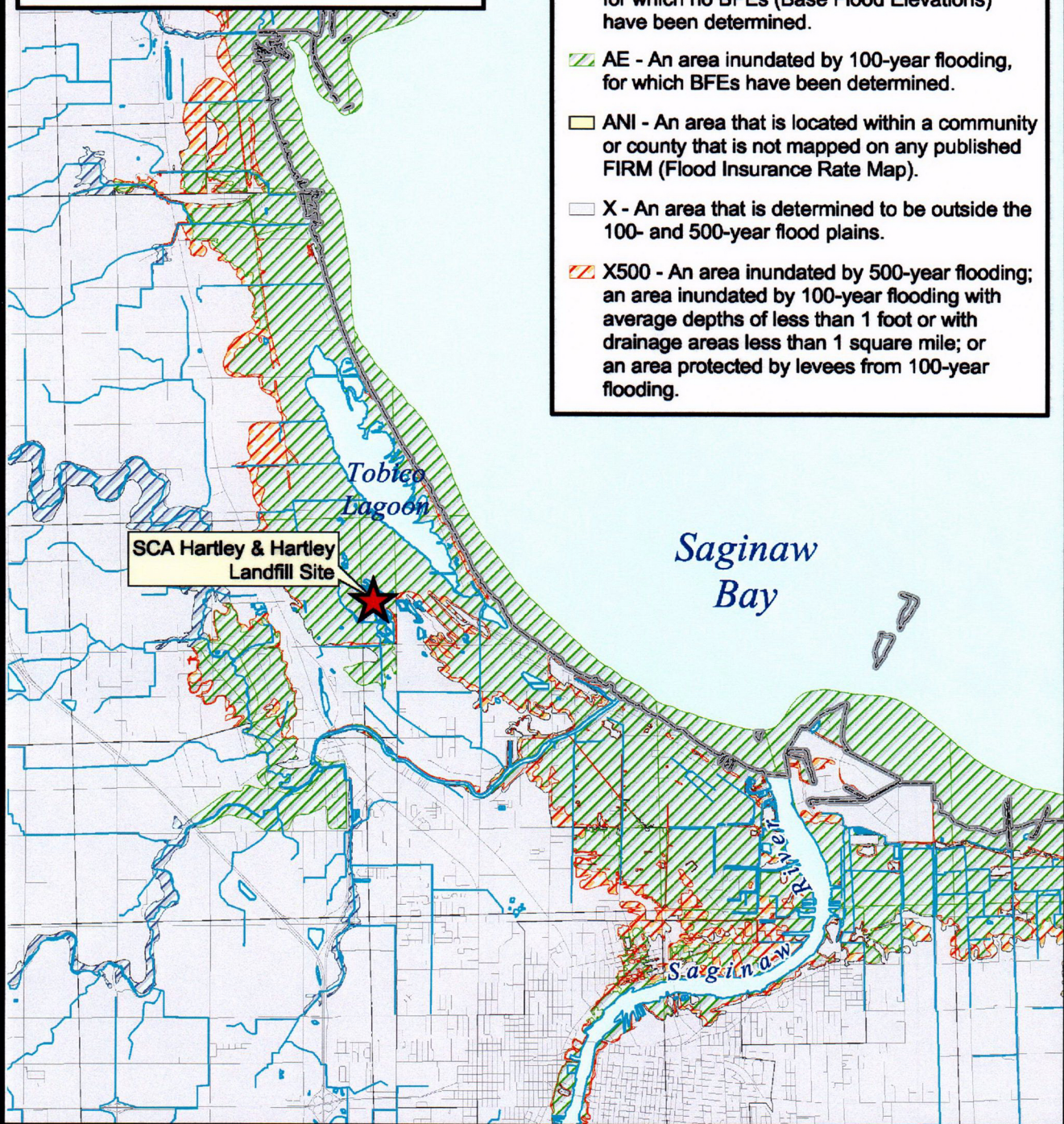


FIGURE 3-17 100-YEAR FLOOD PLAIN MAP

SCA HARTLEY & HARTLEY LANDFILL SITE  
KAWKAWLIN TOWNSHIP, MICHIGAN

|              |               |
|--------------|---------------|
| DRAWN BY:    | C. HANKLEY    |
| APPROVED BY: | J. WEDEKIND   |
| PROJECT NO.  | 6115.40       |
| FILE NO.     | FLOOD_100.MXD |
| DATE:        | OCTOBER 2003  |



