

Figure 3.1.1: Top view of as-received cavity sample.

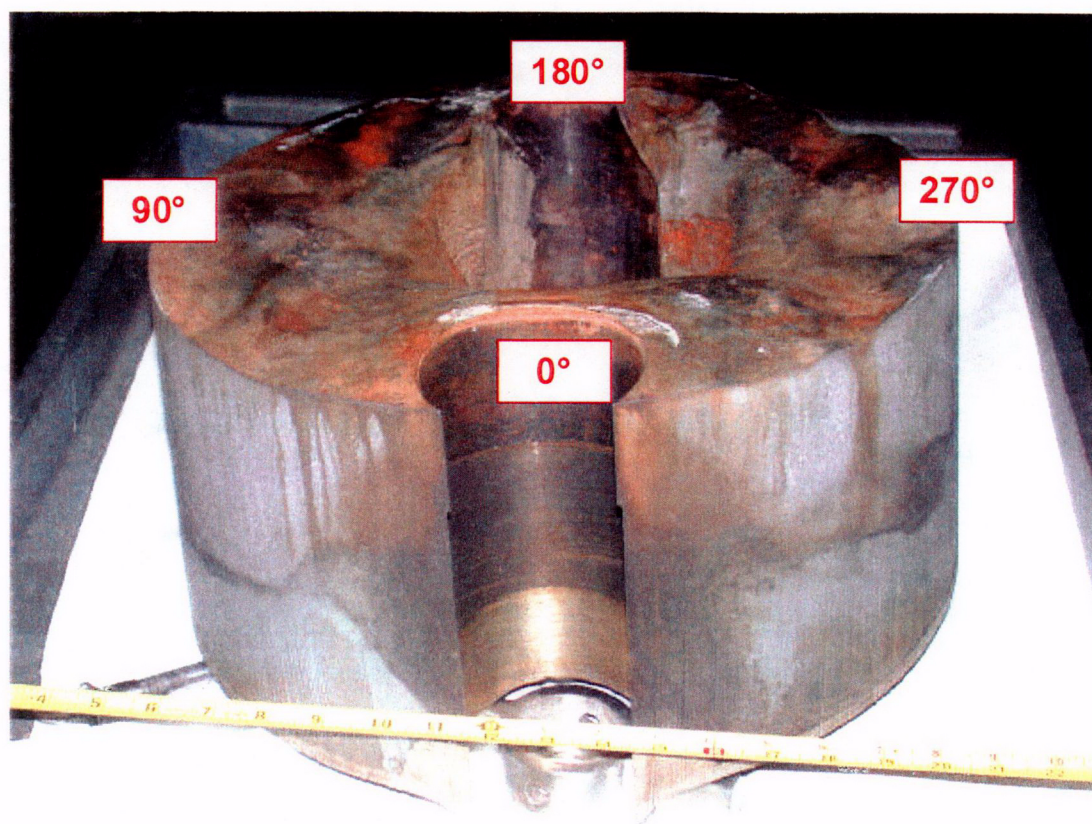


Figure 3.1.2: View of as-received cavity sample from nozzle #11 bore side.



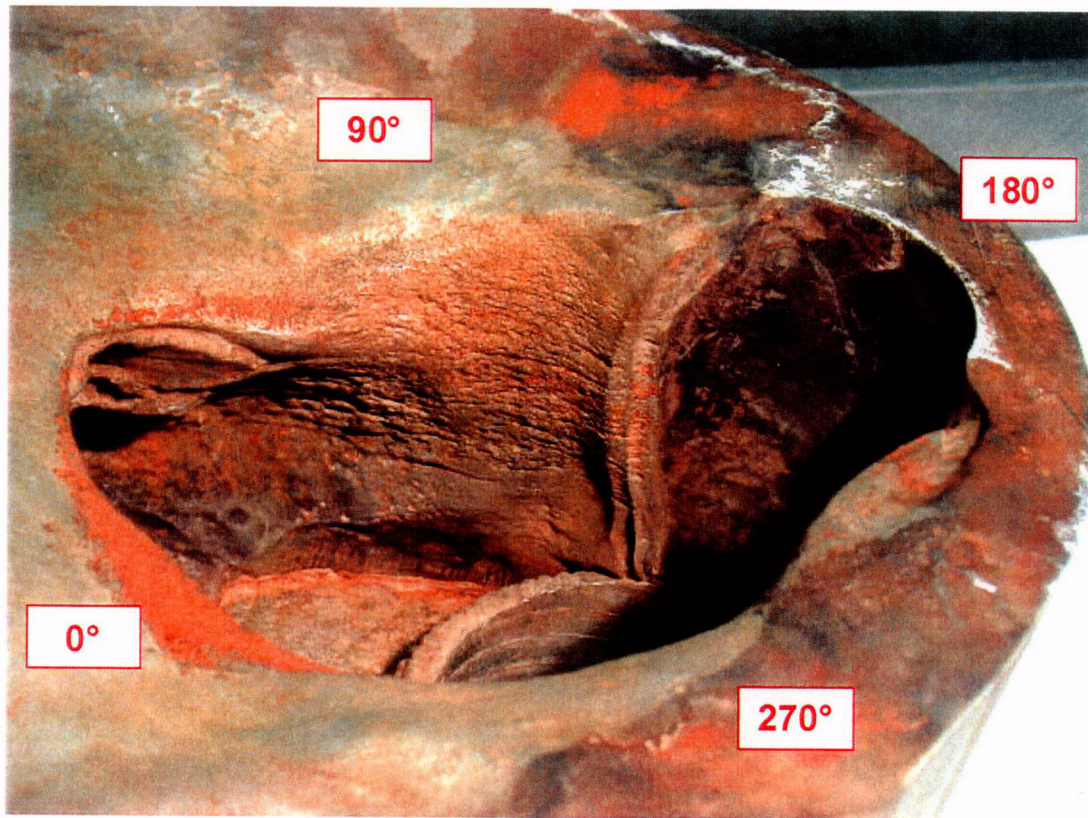


Figure 3.1.3: View of cavity looking toward 90°.

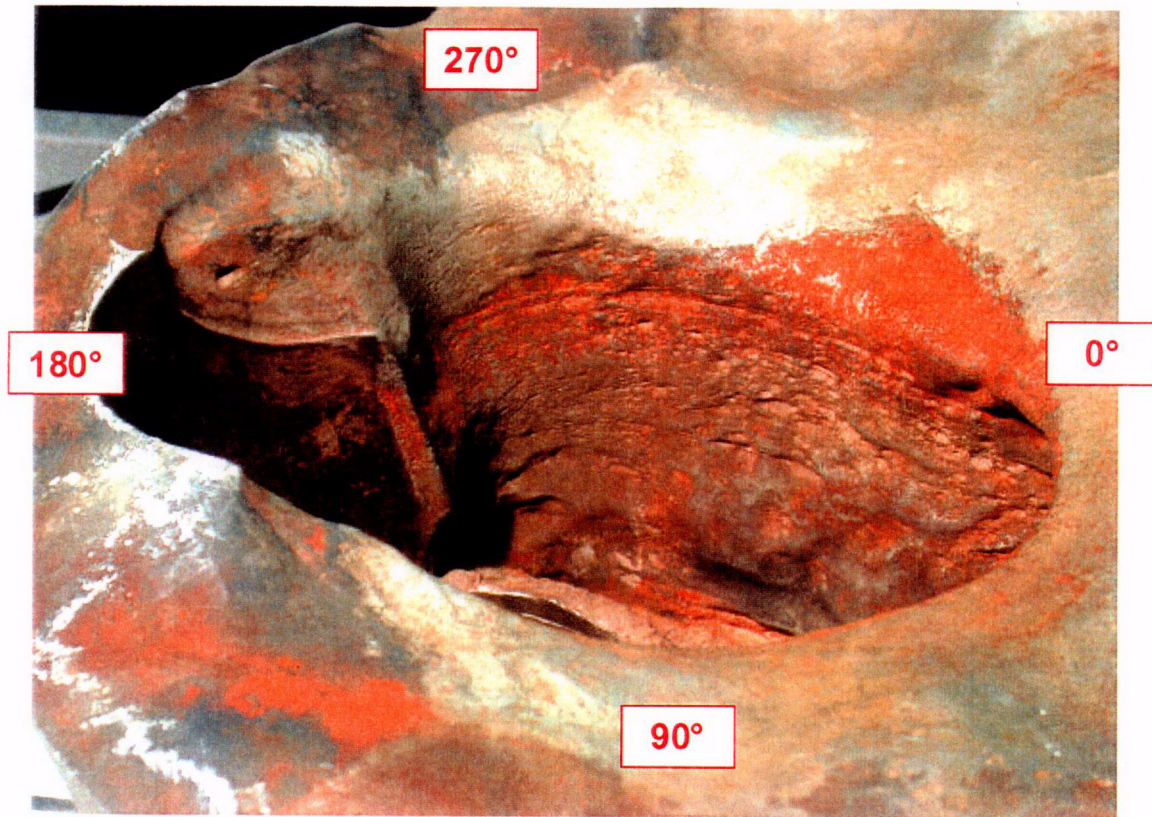


Figure 3.1.4: View of cavity looking toward 270°.



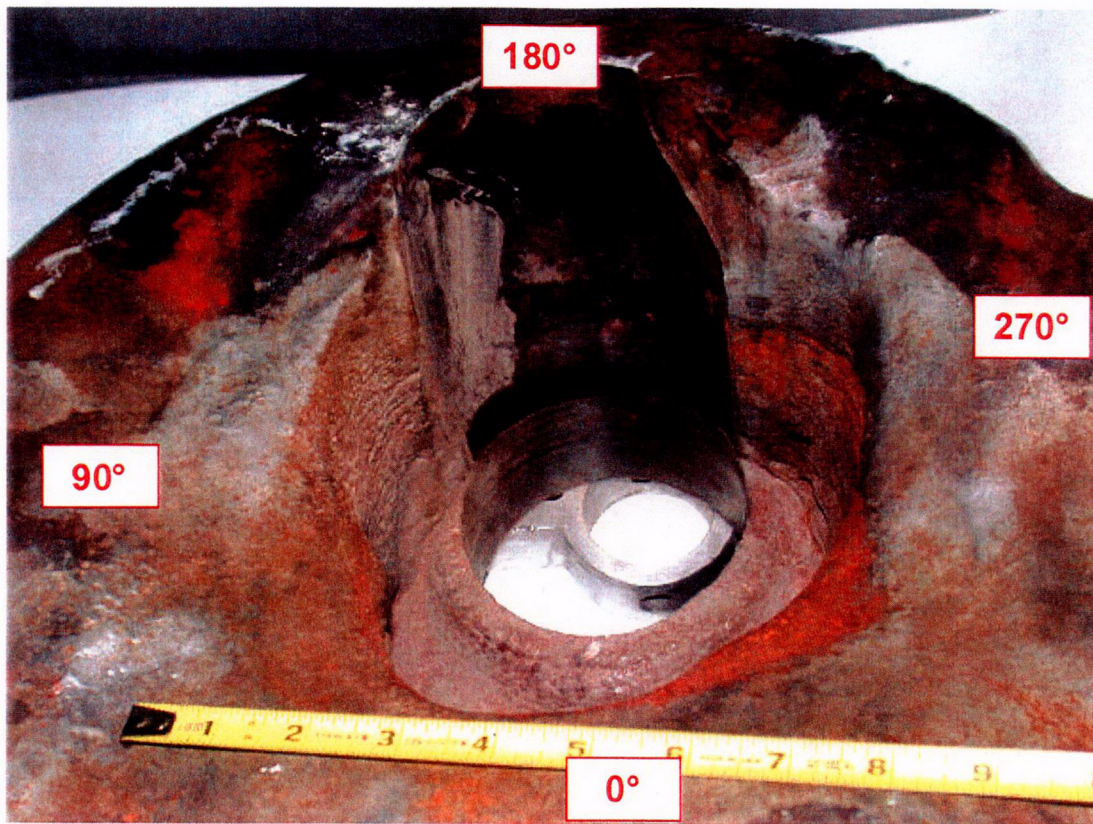


Figure 3.1.5: Looking toward 180°.

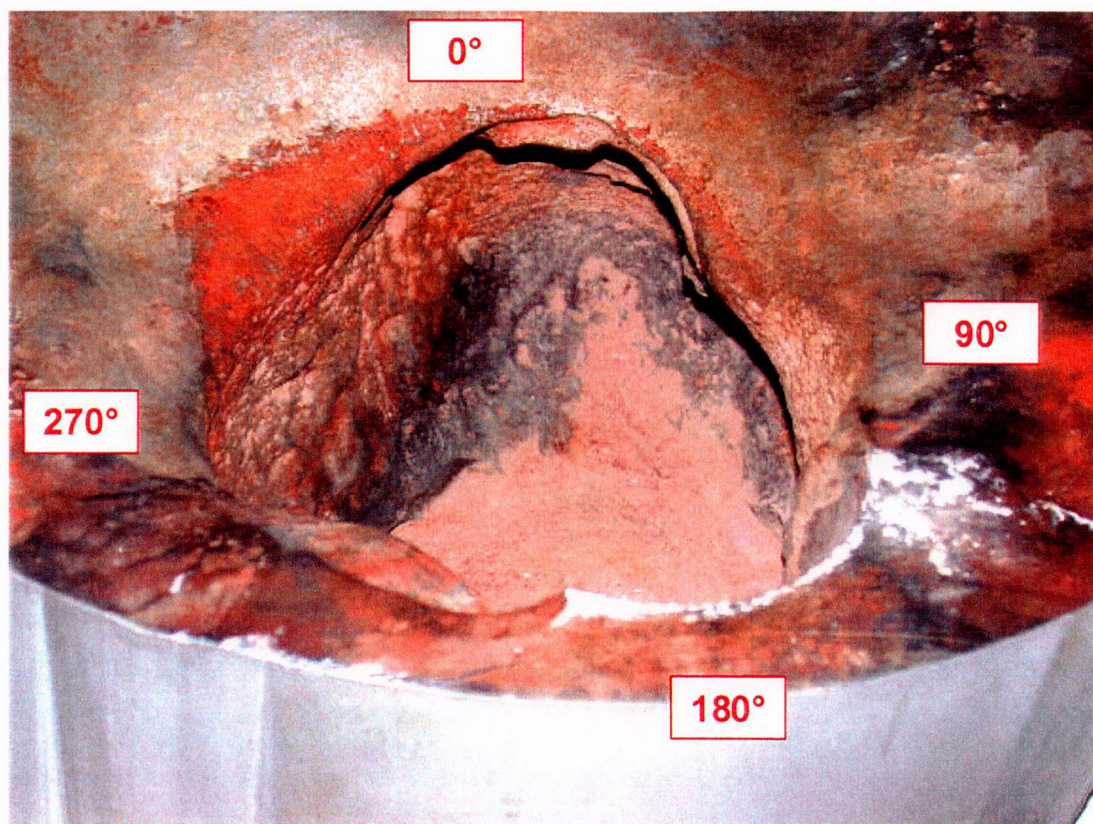


Figure 3.1.6: View of cavity looking toward nose (~10°).



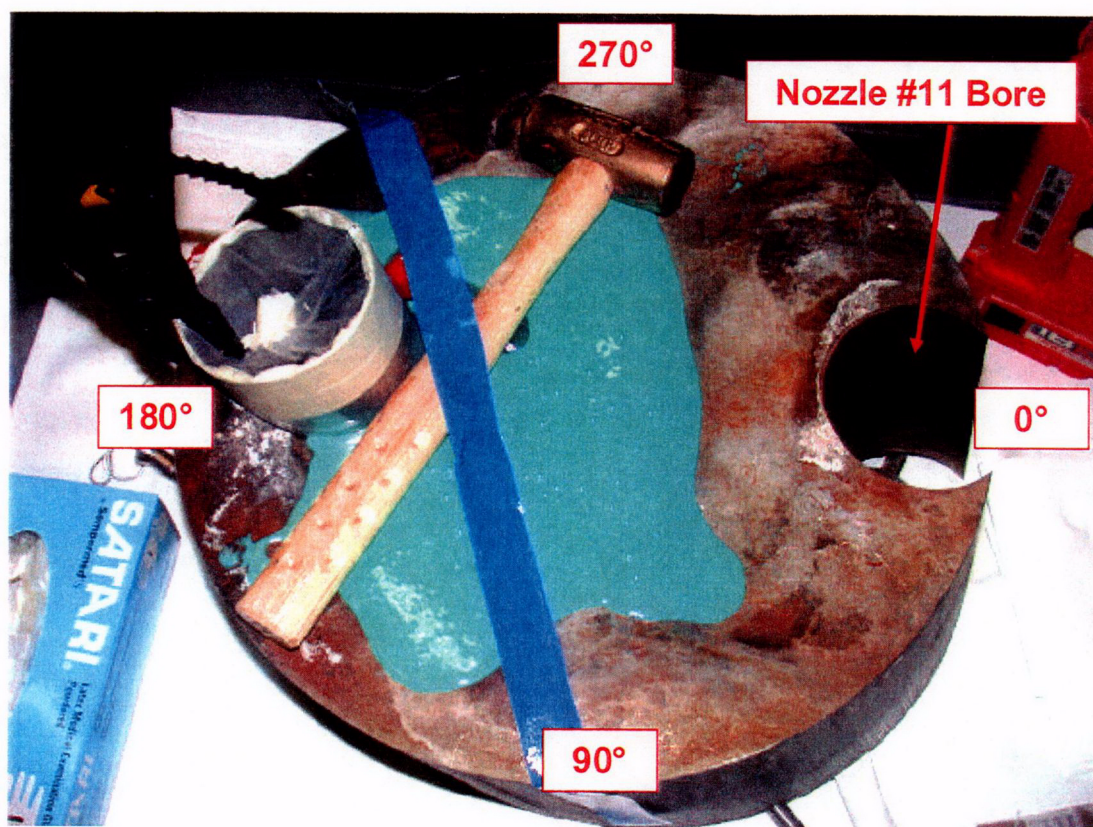
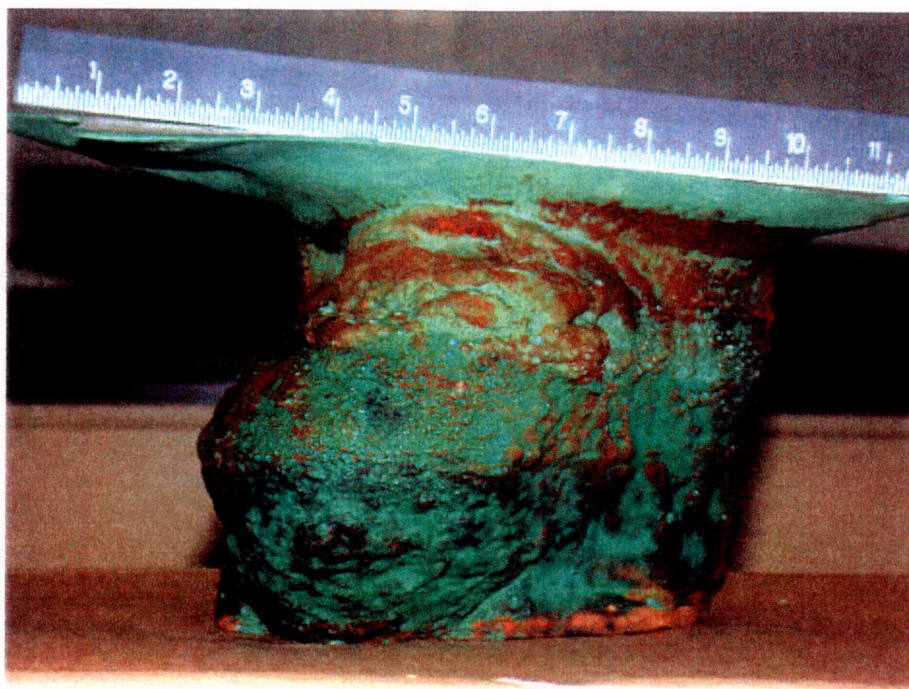


Figure 3.2.1: Photograph showing curing of cavity dental mold.



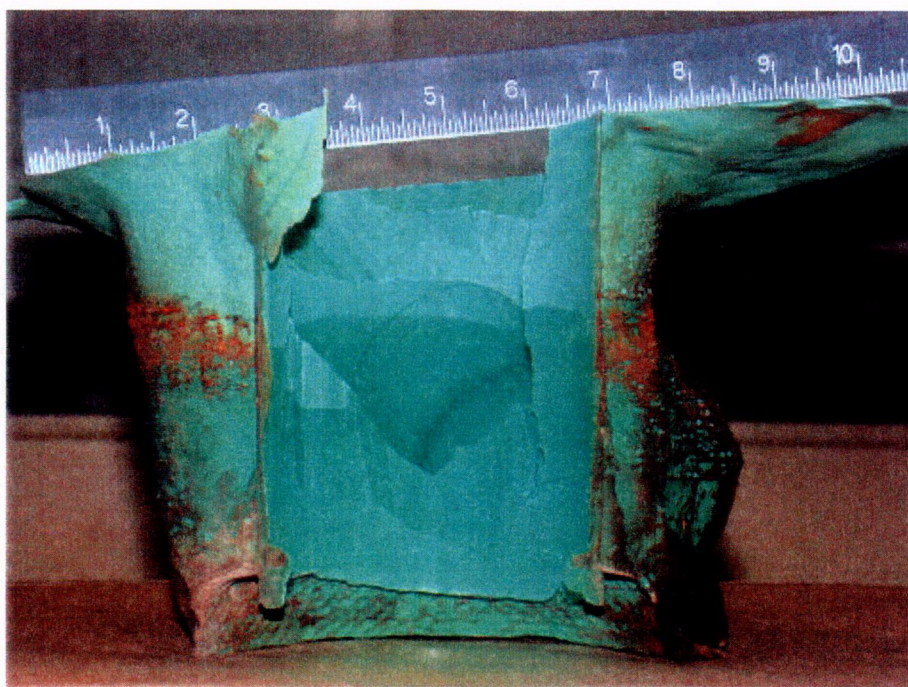
0°



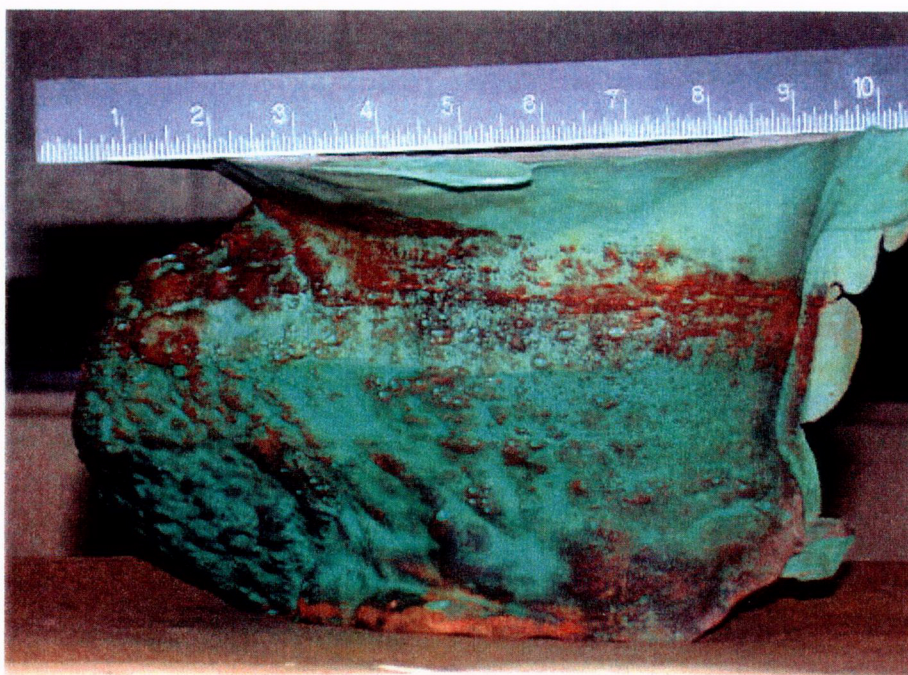
90°

Figure 3.2.2: Photographs of cavity dental mold.





180°



270°

Figure 3.2.2 (cont.): Photographs of cavity dental mold.



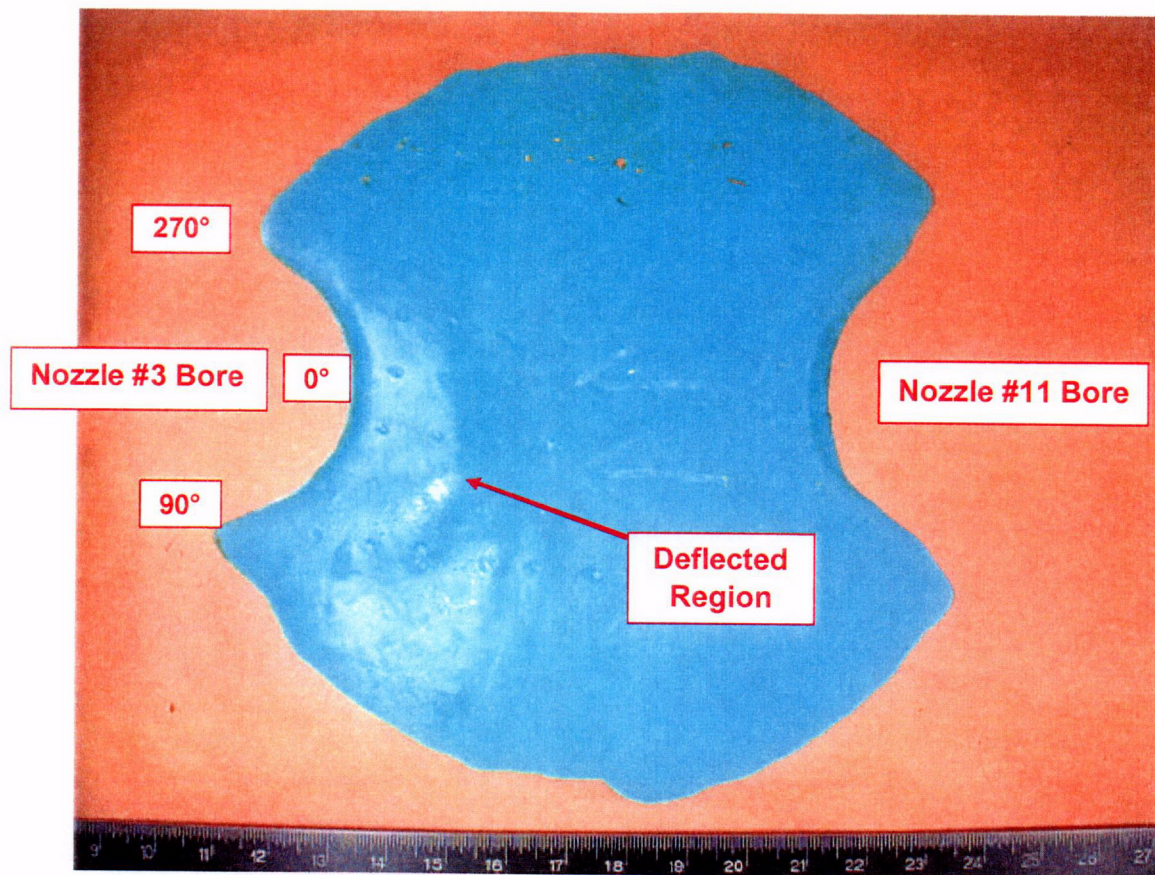


Figure 3.2.3: Photograph showing dental mold of RCS side of cladding.