

MANUAL HARD COPY DISTRIBUTION
DOCUMENT TRANSMITTAL 2003-51705

USER INFORMATION:

Name: ~~GERLACH*ROSE M~~ EMPL#:28401 CA#:0363

Address: NUC 2

Phone#: 54-3194

TRANSMITTAL INFORMATION:

TO: ~~GERLACH*ROSE M~~ 10/31/2003

LOCATION: DOCUMENT CONTROL DESK

FROM: NUCLEAR RECORDS DOCUMENT CONTROL CENTER (NUCSA-2)

THE FOLLOWING CHANGES HAVE OCCURRED TO THE HARDCOPY OR ELECTRONIC MANUAL ASSIGNED TO YOU:

100 - 100 - EMERGENCY DIRECTOR/CONTROL ROOM: EMERGENCY PLAN-POSITION SPECIFIC PROCEDURE

REMOVE MANUAL TABLE OF CONTENTS DATE: 10/27/2003

ADD MANUAL TABLE OF CONTENTS DATE: 10/30/2003

CATEGORY: PROCEDURES TYPE: EP

ID: EP-PS-100

REPLACE: REV:18

REPLACE: REV:18

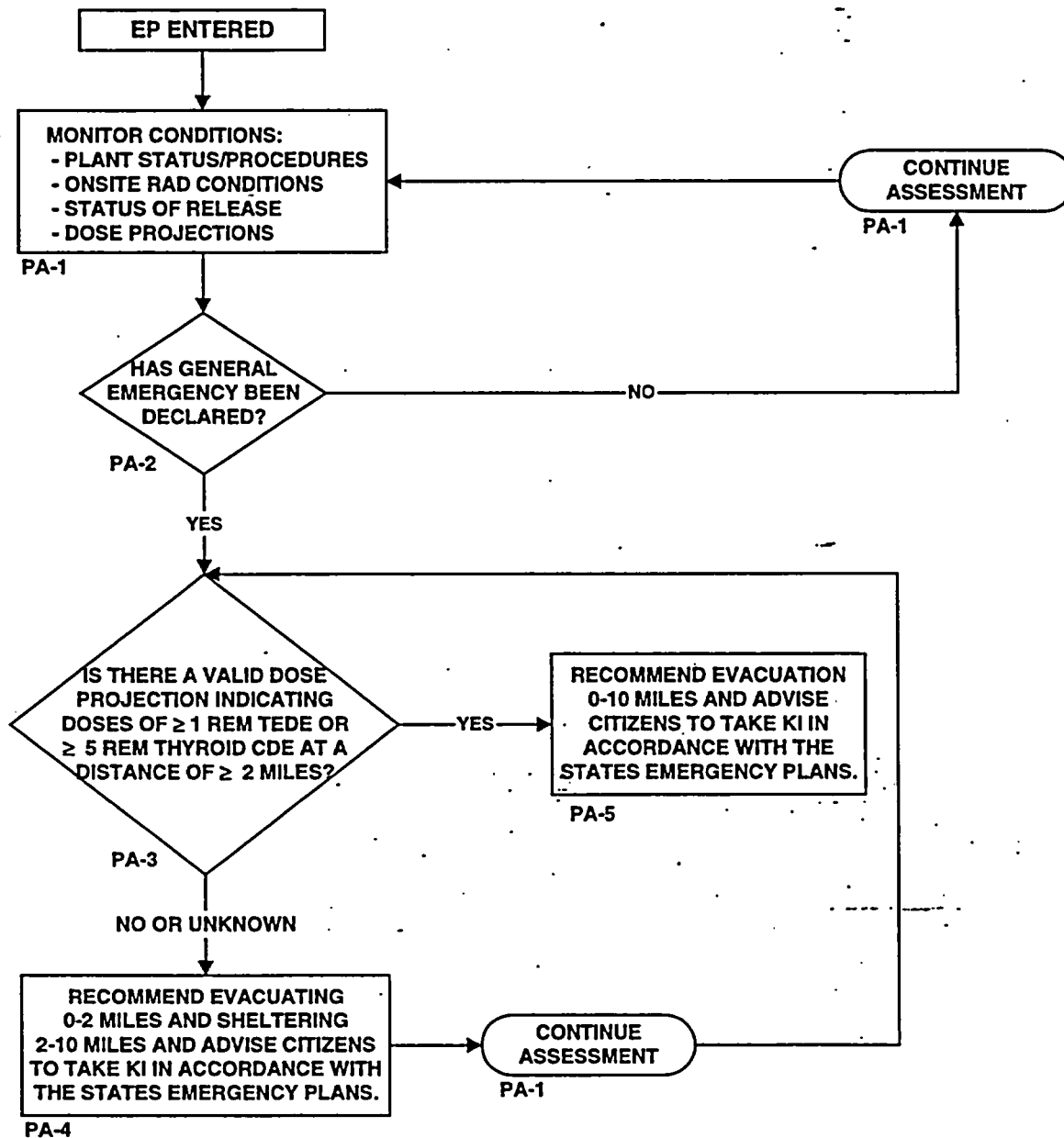
REMOVE: PCAF 2003-1643 REV: N/A

ADD: PCAF 2003-1643 REV: N/A

UPDATES FOR HARD COPY MANUALS WILL BE DISTRIBUTED WITHIN 5 DAYS IN ACCORDANCE WITH DEPARTMENT PROCEDURES. PLEASE MAKE ALL CHANGES AND ACKNOWLEDGE COMPLETE IN YOUR NIMS INBOX UPON RECEIPT OF HARD COPY. FOR ELECTRONIC MANUAL USERS, ELECTRONICALLY REVIEW THE APPROPRIATE DOCUMENTS AND ACKNOWLEDGE COMPLETE IN YOUR NIMS INBOX.

A045

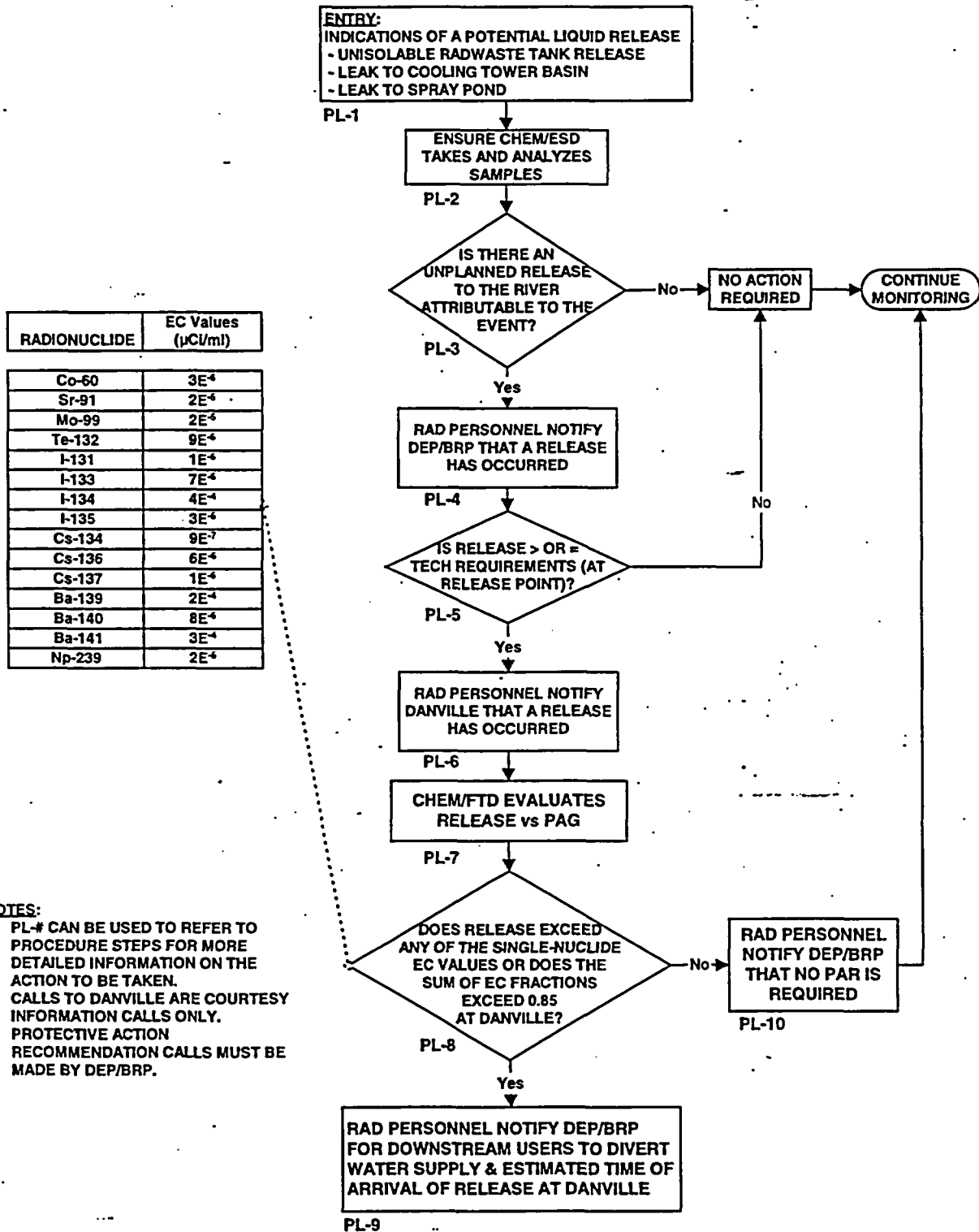
PAR AIRBORNE RELEASES



NOTES:

1. PA-# CAN BE USED TO REFER TO PROCEDURE STEPS FOR MORE DETAILED INFORMATION ON THE ACTION TO BE TAKEN.
2. DOSE PROJECTIONS DO NOT INCLUDE DOSE ALREADY RECEIVED.
3. TEDE - WHOLE BODY (TEDE) IS THE SUM OF EFFECTIVE DOSE EQUIVALENT RESULTING FROM EXPOSURE TO EXTERNAL SOURCES. THE COMMITTED EFFECTIVE DOSE EQUIVALENT (CEDE) FROM ALL SIGNIFICANT INHALATION PATHWAYS AND THE DOSE DUE TO GROUND DEPOSITION.
4. CDE - COMMITTED DOSE EQUIVALENT TO THE CHILD THYROID.

PAR LIQUID RELEASES



PUBLIC PROTECTIVE ACTION RECOMMENDATION GUIDE

AIRBORNE RELEASES

☐ **PA-1 MONITOR CONDITIONS FOR PAR APPLICATION**

The following conditions should be continuously evaluated to determine if a PAR should be implemented or changed:

- Plant status and prognosis for changes in conditions
- Onsite radiological conditions
- Status of actual or potential radioactive releases
- Offsite dose projections or actual offsite radiological conditions
- Escalation in Emergency Classification (i.e., General)

(Go to PA-2)

☐ **PA-2 HAS A GENERAL EMERGENCY BEEN DECLARED?**

☐ **YES** — If a GENERAL EMERGENCY has been declared, a PAR must be made within 15 minutes of the emergency declaration. The PAR requirement is found in NUREG-0654. **(Go to PA-3)**

☐ **NO** — If a GENERAL EMERGENCY has not been declared, continue to monitor plant status, parameter trends, and prognosis for termination or escalation of the event. **(Go to PA-1)**

☐ **PA-3 IS THERE A VALID DOSE PROJECTION INDICATING DOSES OF ≥ 1 REM TEDE OR ≥ 5 REM CDE CHILD THYROID AT A DISTANCE OF > 2 MILES?**

☐ **YES** — If the projected doses at 2 miles are ≥ 1 REM TEDE or ≥ 5 REM CDE child thyroid, then full evacuation (0-10 miles) is recommended. **(Go to PA-5)**

☐ **NO/UNKNOWN** — **(Go to PA-4)**

☐ **PA-4 RECOMMEND EVACUATION 0-2 MILES; SHELTER 2-10 MILES AND ADVISE CITIZENS TO TAKE KI IN ACCORDANCE WITH THE STATE'S EMERGENCY PLANS.**

Limited Evacuation (0-2 miles) and sheltering is appropriate for events that are significant enough to cause a General Emergency classification and dose projections are low, unknown, or below full evacuation guidelines. A recommendation is also given to the state to advise citizens to take KI in accordance with the state's emergency plans.

☐ **PA-5 EVACUATE 0-10 MILES AND ADVISE CITIZENS TO TAKE KI IN ACCORDANCE WITH THE STATE'S EMERGENCY PLANS.**

Full evacuation of members of the general public is recommended at this point based on the emergency classification and dose projections. A recommendation is also given to the state to advise citizens to take KI in accordance with the state's emergency plans.

LIQUID

☐ **PL-1 ENTRY**

This section is entered when there are indications of a potential unplanned radioactive liquid release.

Indications of potential unplanned releases include:

- an unisolable radwaste tank release
- leaks to cooling tower basin
- leak to spray pond

(Go to PL-2)

☐ **PL-2 CHEMISTRY/ENVIRONMENTAL SAMPLING DIRECTOR (ESD) TAKES AND ANALYZES SAMPLE**

(Go to PL-3)

PL-3 IS THERE AN UNPLANNED RELEASE TO THE RIVER?

- ☐ **YES —** An unplanned release to the river has occurred when event-related radioactive materials are released to the river that are not controlled by the release methodologies described in the ODCM and applicable Chemistry procedures.

(Go to PL-4)

- ☐ **NO —** If there is no unplanned release to the river, then no notifications are required and monitoring should continue.
-

☐ **PL-4 RAD PERSONNEL NOTIFY DEP/BRP THAT A RELEASE HAS OCCURRED**

Depending on which facility is activated, the notification to BRP will be made by the RPC (TSC), Dose Assessment Supervisor, or Radiological Liaison at the EOF.

DO NOT MAKE ANY PROTECTIVE ACTION RECOMMENDATIONS AT THIS TIME.

(Go to PL-5)

LIQUID (CONT'D)

PL-5 IS RELEASE \geq TECHNICAL REQUIREMENTS LIMITS (AT THE RELEASE POINT)?

- ☐ **YES** — Releases are at or greater than Technical Requirements limits when Chemistry determines that the limits are exceeded based on methodologies described in the ODCM and applicable Chemistry procedures.

(Go to PL-6)

- ☐ **NO** — If the release is $<$ Technical Requirements limits, then no further notifications are required and monitoring should continue.

☐ **PL-6 RAD PERSONNEL NOTIFY DANVILLE THAT A RELEASE HAS OCCURRED**

Depending on which facility is activated, the notification to Danville will be made by the RPC (TSC), Dose Assessment Supervisor, or Radiological Liaison at the EOF.

DO NOT MAKE ANY PROTECTIVE ACTION RECOMMENDATIONS AT THIS TIME.

(Go to PL-7)

☐ **PL-7 CHEM/FTD EVALUATES RELEASE VERSUS PAGs**

The results of the sample analysis are compared to the PAGs for radionuclides in drinking water. The analysis calculates the expected concentration at Danville, taking into account the dilution afforded by the river.

PL-8 DOES RELEASE EXCEED PAGs (AT DANVILLE)?

- ☐ **YES** — If a single isotope exceeds its effluent concentration (EC) value or the sum of EC fractions exceeds 0.85, then a protective action recommendation should be made for downstream water users (e.g., Danville) to **DIVERT DRINKING WATER** supply to a backup supply or terminate user intake until the release has passed.

(Go to PL-9)

- ☐ **NO** — If the PAGs are not exceeded, monitoring should continue and the State should be notified that no PAR for the liquid release is required.

(Go to PL-10)

LIQUID (CONT'D)

☐ **PL-9 RAD PERSONNEL NOTIFY DEP/BRP OF PAR**

Depending on which facility is activated, the PAR notification to DEP/BRP will be made by the RPC (TSC), Dose Assessment Supervisor, or Radiological Liaison at the EOF. The PAR FORM shall be used to document the PAR.

DO NOT COMMUNICATE THE PROTECTIVE ACTION RECOMMENDATION TO DANVILLE. THE DEP/BRP IS RESPONSIBLE FOR THIS COMMUNICATION AND ANY COMMUNICATION TO OTHER DRINKING WATER SUPPLIERS OR WATER USERS.

☐ **PL-10 RAD PERSONNEL NOTIFY DEP/BRP**

No PAR is required. Depending on which facility is activated, the RPC (TSC), Dose Assessment Supervisor, or Radiological Liaison at the EOF shall notify DEP/BRP that no PAR is required.

PROTECTIVE ACTION RECOMMENDATION STATE NOTIFICATION FORM

☐ THIS IS A DRILL

☐ THIS IS AN ACTUAL EVENT

(This form is to be used to communicate PPL's Protective Action to the senior state official at 717-651-2148.)

1. This is _____ of the Susquehanna Steam Electric Station.
(Fill in your name)
2. I am the: ☐ Emergency Director at the Susquehanna SES Control Room
☐ Emergency Director at the Technical Support Center
☐ Recovery Manager at the Emergency Operations Facility
3. I am about to provide a Protective Action Recommendation. Do I have the Senior State Official on the line?

Name _____
4. A General Emergency has been declared as of _____.
5. This declaration was made due to:

6. The PPL Susquehanna Protective Action Recommendation is:
☐ Evacuate 0-10 miles and advise citizens to take KI in accordance with the state's emergency plans.
☐ Evacuate 0-2 miles and shelter 2-10 miles and advise citizens to take KI in accordance with the state's emergency plans.
☐ Divert Danville drinking water supply from the Susquehanna River
☐ Evacuate beyond 10 miles (specify distance _____) and advise citizens to take KI in accordance with the state's emergency plans.
7. Date/Time: _____

Control # _____

EMERGENCY NOTIFICATION REPORT

1. Call Status: ☐ THIS IS A DRILL ☐ THIS IS AN ACTUAL EVENT

2. This is: _____ at Susquehanna Steam Electric Station.
(Communicator's Name)

My telephone
number is: _____

(Callback telephone number)

Notification time is: _____

(Time notification
initiated)

2. EMERGENCY CLASSIFICATION:

☐ UNUSUAL EVENT

☐ ALERT

☐ The event has been terminated.

☐ SITE AREA EMERGENCY

☐ GENERAL EMERGENCY

UNIT: ☐ ONE

Declaration
Time: _____

DATE: _____

☐ TWO

☐ ONE & TWO

(Time classification/
termination declared)

(Date classification/
termination declared)

THIS REPRESENTS A/VAN:

☐ INITIAL DECLARATION

☐ ESCALATION

☐ NO CHANGE

} IN CLASSIFICATION STATUS

4. The Emergency Action Level (EAL) Number is: _____

BRIEF NON-TECHNICAL
DESCRIPTION OF THE EVENT:

- For initial declaration, static update, or escalation, provide current classification EAL-number only.
- For significant events, or when directed by the ED, RM, or EOFSS, provide a brief description.
- For termination, write emergency has been terminated.

5. THERE IS: ☐ No
☐ AN AIRBORNE
☐ A LIQUID } NON-ROUTINE RADIOLOGICAL RELEASE IN PROGRESS

6. WIND DIRECTION IS FROM: _____ WIND SPEED IS: _____ mph.
(Data from 10 meter meteorological tower, available on PICSY.)

7. Conclusion: ☐ THIS IS A DRILL ☐ THIS IS AN ACTUAL EVENT

APPROVED: _____
(ED, RM, or EOFSS)

Time: _____
(Time form approved)

Date: _____
(Date form approved)

POTASSIUM IODIDE (KI) TRACKING FORM

(Recommended dose: 1 tablet/day = 130 mg)

[illegible]

Approved by: _____
Emergency Director - or - Recovery Manager

Date _____