

Consolidated Edison Co. of New York, Inc.
Entergy Nuclear Indian Point 2, LLC
Entergy Nuclear Operations, Inc.

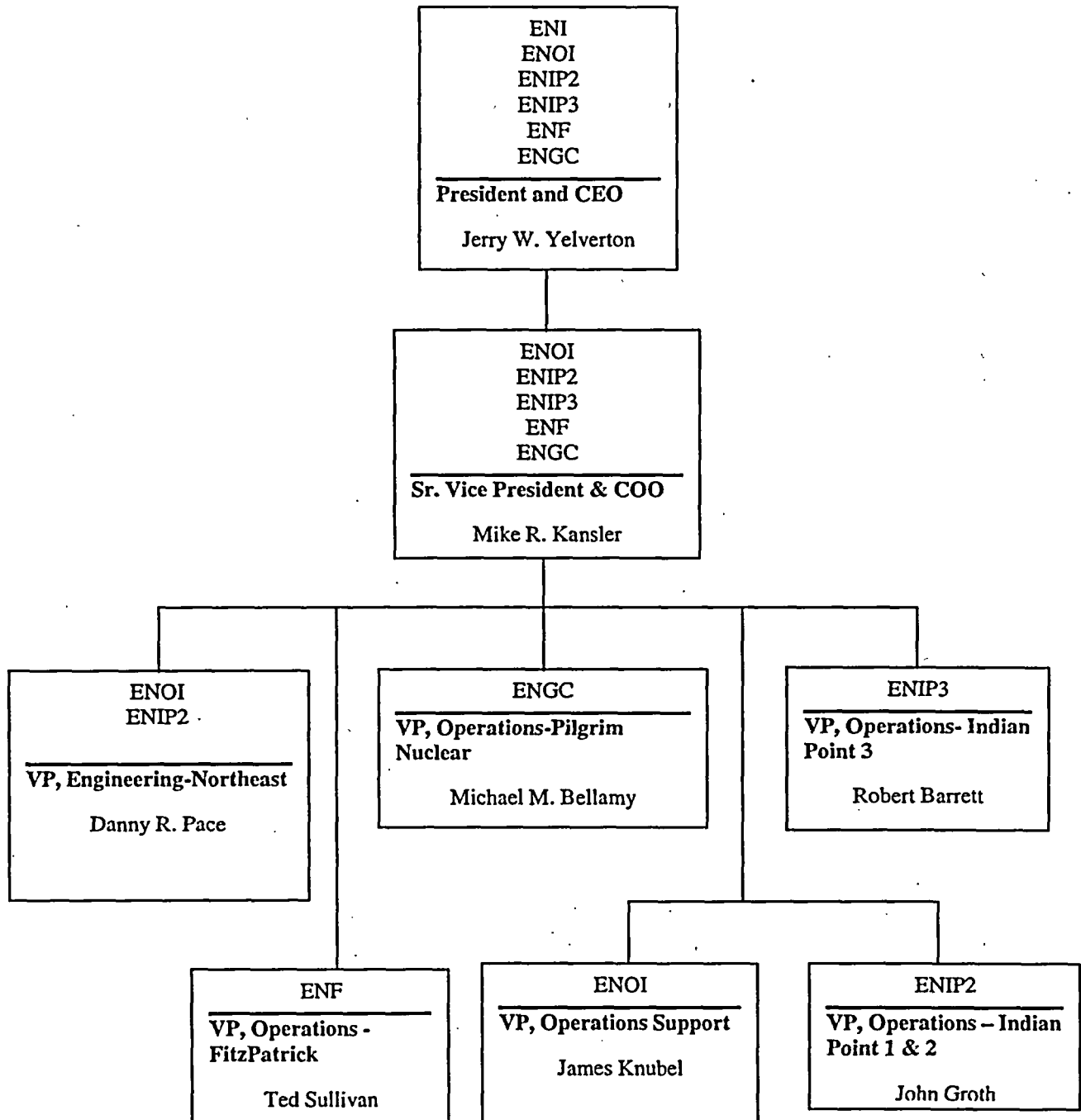
Docket Nos. 50-003 and 50-247
License Nos. DPR-5 and DPR- 26

ENCLOSURE 6

Organizational Chart
of
Entergy Non-Regulated Nuclear Organization
And
Resumes of:
Jerry Yelverton and Michael Kansler

ENTERGY NUCLEAR ORGANIZATIONAL CHART

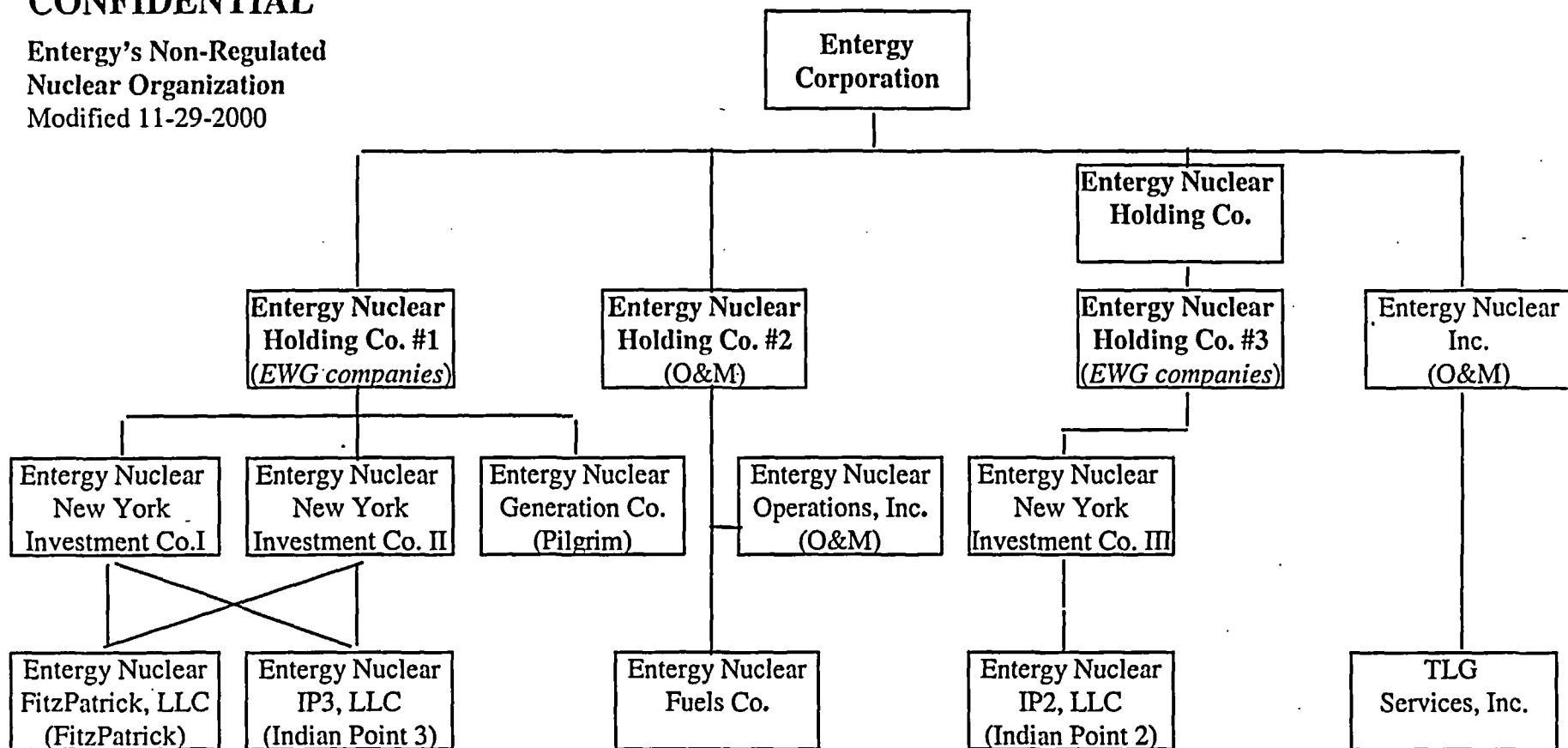
Entergy's Non-regulated Nuclear Organization
December 1, 2000



ENI Entergy Nuclear Incorporated
ENOI Entergy Nuclear Operations, Inc.
ENIP2 Entergy Nuclear Indian Point 2, LLC
ENIP3 Entergy Nuclear Indian Point 3, LLC
ENF Entergy Nuclear FitzPatrick, LLC
ENG Entergy Nuclear Generating Company

CONFIDENTIAL

Entergy's Non-Regulated
Nuclear Organization
Modified 11-29-2000



Exempt Wholesale Generator (EWG)
Operations and Maintenance (O&M)



Jerry Yelverton
Chairman & CEO
Entergy's Nuclear
Businesses.



Jerry Yelverton
Chairman & CEO of
Entergy's Nuclear
Businesses

Yelverton is chairman and chief executive officer for Entergy's nuclear businesses. Entergy, through subsidiary Entergy Operations, Inc., operates five nuclear units in its retail electric service area: two-units at Arkansas Nuclear One and single units at Grand Gulf Nuclear Station, River Bend Station, and Waterford 3. Entergy, through subsidiaries Entergy Nuclear Indian Point 3, Entergy Nuclear FitzPatrick, and Entergy Nuclear Operations, Inc., owns and operates the Indian Point 3 and James A. FitzPatrick Nuclear Plants in New York, and through subsidiary Entergy Nuclear Generation Company, Entergy owns and operates the Pilgrim Nuclear Station in Massachusetts. Through subsidiary Entergy Nuclear, Inc., Entergy is aggressively pursuing nuclear plant acquisitions and offering decommissioning and other management services.

Yelverton oversaw the first completed purchase of a nuclear plant in the U.S. when the Pilgrim Station transaction was completed in July 1999, only eight months after the agreement to purchase was signed. Under his leadership, in March 2000 Entergy Nuclear reached an agreement to purchase the Indian Point 3 and James A. FitzPatrick plants from the New York Power Authority, and completed the purchases in November, 2000. Yelverton is also responsible for contracts for managing decommissioning at Maine Yankee and Millstone 1, which clearly establish the company as the industry expert in that cycle of nuclear plant life.

In addition to leading all of Entergy's nuclear subsidiaries, Yelverton is also executive vice president and chief nuclear officer of Entergy Services, Inc.

Yelverton is an active alumnus of Texas A&M University, where he earned his bachelor of science degree in nuclear engineering. He is currently a member of the Department of Nuclear Engineering Advisory Council.

Yelverton began his utility career in 1973 with Bechtel Power Corporation, serving in various quality assurance positions at Grand Gulf during the plant's construction phase. He joined the Entergy system in 1979 as nuclear site quality assurance manager at Grand Gulf. He held a number of management positions there, including manager of plant operations, refueling outage director, and manager of support. In 1990 he was named general manager at Arkansas Nuclear One and in 1992 was promoted to vice president, operations at ANO. Under his leadership, ANO improved from a marginal performer to one of the top plants in the U.S. in both cost and production, while improving the regulatory performance and INPO ratings. In 1996 he was promoted to executive vice president and chief operating officer for Entergy Operations. 1999 presented a steady progression of executive title expansions, culminating in the role of chairman and CEO for all of Entergy's nuclear businesses.

Yelverton is a Fall 1998 graduate of the three-month advanced management program at Harvard Business School. He serves as a member of NEI's Nuclear Strategic Issues Advisory Committee and Executive Steering Group, and has served as chairman of the INPO E&A IRG and as a member of EPRI's Research Advisory Committee. In 1983, he earned a senior reactor operator license at Grand Gulf.



Michael R. Kansler



Michael R. Kansler
Chief Operating Officer,
Entergy Nuclear, Inc.
a subsidiary of Entergy
Corp

Mike Kansler, a 22-year veteran of nuclear power plant management, was named senior vice president and chief operating officer of Entergy's nuclear operations in New York state and the Northeast in January 2000. As Senior Vice President and Chief Operating Officer –Northeast of Entergy Nuclear Operations, Inc., he has operating responsibility for the Pilgrim Nuclear Station in Plymouth, MA and the Indian Point 3 and James A. FitzPatrick plants in NY.

Kansler previously served as vice president of operations support for all five of Entergy's nuclear power units in Arkansas, Mississippi and Louisiana. Functions reporting to him included Nuclear Support; Security; Materials, Purchasing and Contracts; Nuclear Safety and Licensing; and Corporate Assessments.

In 1998, Kansler came to Entergy from Virginia Power, where he was Vice President, Nuclear Operations. He held responsibilities for managing the overall operation and maintenance of two twin unit nuclear power stations there. During his tenure, both stations maintained high safety and operating performance records.

Kansler began his professional career as an assistant engineer in 1977 at the Surry Nuclear Station. He participated in the company on-loan program of the Institute of Nuclear Power Operations in Atlanta, GA, in 1985. Kansler became superintendent of maintenance at the North Anna Station in 1986 and station manager at Surry in 1988 before moving to corporate management at Virginia Power as vice president of nuclear services in 1995. At the corporate level, Kansler chaired the nuclear Management Safety Review Committee.

Kansler earned a mechanical engineering degree from Virginia Polytechnic Institute and State University in 1976 and completed the Executive Management Program at Penn State University in 1991. He has held a Senior Reactor Operator license from the U.S. Nuclear Regulatory Commission and is a professional member of the American Society of Mechanical Engineers.
