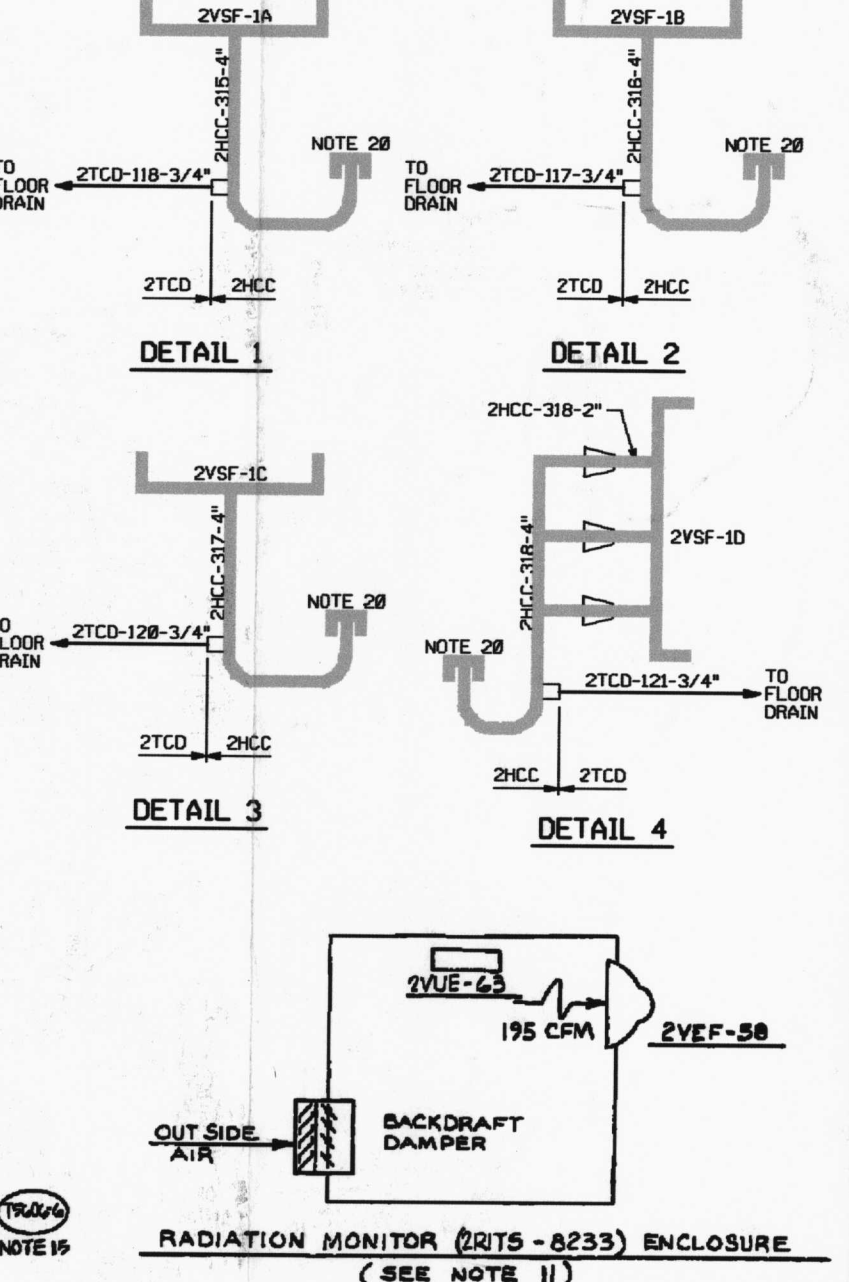


TABLE NO. 1

UNIT HEATER	INSTRUMENT NUMBERS
2VUH-46	2TC-8300
2VUH-47	2TC-8301
2VUH-48	2TC-8302
2VUH-49	2TC-8303
2VUH-50	2TC-8304
2VUH-51	2TC-8305
2VUH-52	2TC-8306
2VUH-53	2TC-8307



- NOTES:
1. FOR GENERAL NOTES, DRAWING INDEX, AND SYMBOLS SEE DWG. NO. M-2176.
 2. FOR LOGIC DIAGRAMS SEE DWG. NO. 2424 & 2433.
 3. ** INDICATES TO BE FURNISHED BY H&V TEMP. CONTROL SUB-CONTRACTOR.
 4. ALL AIR DUCTS, AIR PLENUMS, DAMPERS & DUCT SUPPORTS ON THE DISCHARGE SIDE OF THE CONTAINMENT BLDG. COOLING FANS AND THE CONTAINMENT COOLING UNITS ARE 10".
 5. ALL AIR DUCTS FOR THE C.B. PURGE SYSTEM (INSIDE THE C.B.), THE RETURN AIR DUCTS ON THE INLET SIDE OF THE COOLING UNITS, DUCT SUPPORTS & SUPPORTS FOR THE UNIT HEATERS SHALL BE DESIGNED FOR A SEISMIC CLASS 1.
 6. DELETED.
 7. DELETED.
 8. CONNECTION PIPING TO BE USED IN HYDROGEN PURGE AIR & SAMPLING SYSTEM, EXCEPT THE PENETRATION PIPING, DO NOT REQUIRE UA LABEL.
 9. INSTRUMENTS LISTED IN ABOVE TABLES ARE FOR REFERENCE ONLY.
 10. LAST VALVE NUMBER USED 2VH-18.
 11. FAN, HEATER, DAMPER AND LOUVER ARE FIELD PURCHASED. (FOR EQUIPMENT DETAIL SEE DWG. A-2503 & A-2504).
 12. FOR LOCATION OF AIR TEMP. SENSORS, SEE INSTRUMENT LOCATION DRAWINGS M-2067 THRU M-2571.
 13. FOR LOCATION OF 2VH-8358, SEE DRAWING M-2571.
 14. DELETED.
 15. COMPUTER INPUT SIGNAL IS COMMON TO PLANT COMPUTER, AND SPOS WITH IDENTICAL POINT I.D.
 16. TEMPERATURE INDICATORS (2TI-8364 & 2TI-8368) ARE PROVIDED IN THE ELECTRICAL EQUIPMENT ROOM FOR REMOTE INDICATION OF THE TWO RTDS 2TE-8364 & 2TE-8368. DURING NORMAL OPERATION, SEE THE PLANT COMPUTER.
 17. 2TE-8364 & 2TE-8368 NORMALLY MOUNTED IN THE COMMON HVAC RETURN AIR DUCT (20" x 34") WILL BE RELOCATED TO THEIR ILT LOCATIONS DURING THE ILT AS SHOWN. THESE RTDS WILL BE PROVIDED WITH SUFFICIENT LENGTH OF COILED CORDS FOR THIS PURPOSE.
 18. DELETED.
 19. DELETED.
 20. LOOSE CAP FOR AIR BARRIER WHEN NOT IN USE. 14 GA. A-248, F-384 OR F-316 WITH 1/2" UP LIP ALL AROUND. CAP SECURED TO PIPE WITH 1/8" DIA. WIRE SUFFICIENT IN LENGTH TO ALLOW CAP TO BE PUSHED OFF BY WATER PRESSURE.
 21. THE INDICATED FAN FLOW IS THE MEASURED DESIGN FLOW FOR DBA CONDITIONS. THE DUCT REGISTER FLOWS INDICATED ARE BASED ON THE ORIGINAL DUCT DESIGN OF 98,000 CFM.

LEGEND		
LINE COLOR	SYSTEM/APP. REPORT	
	HYDROGEN CONTROL/82-R-2805-05	
	CONTAINMENT COOLING/82-R-2805-04	
	LICENSE RENEWAL BOUNDARY	

ARKANSAS NUCLEAR ONE
UNIT 2
RUSSELLVILLE, ARKANSAS

PIPING & INSTRUMENT DIAGRAM
AIR FLOW & CONTROL DIAGRAM
HEATING, VENTILATING & AIR COND.
CONTAINMENT BUILDING

DRAWING NO.	SHEET	REVISION
LRA-M-2261	1	0

Entergy