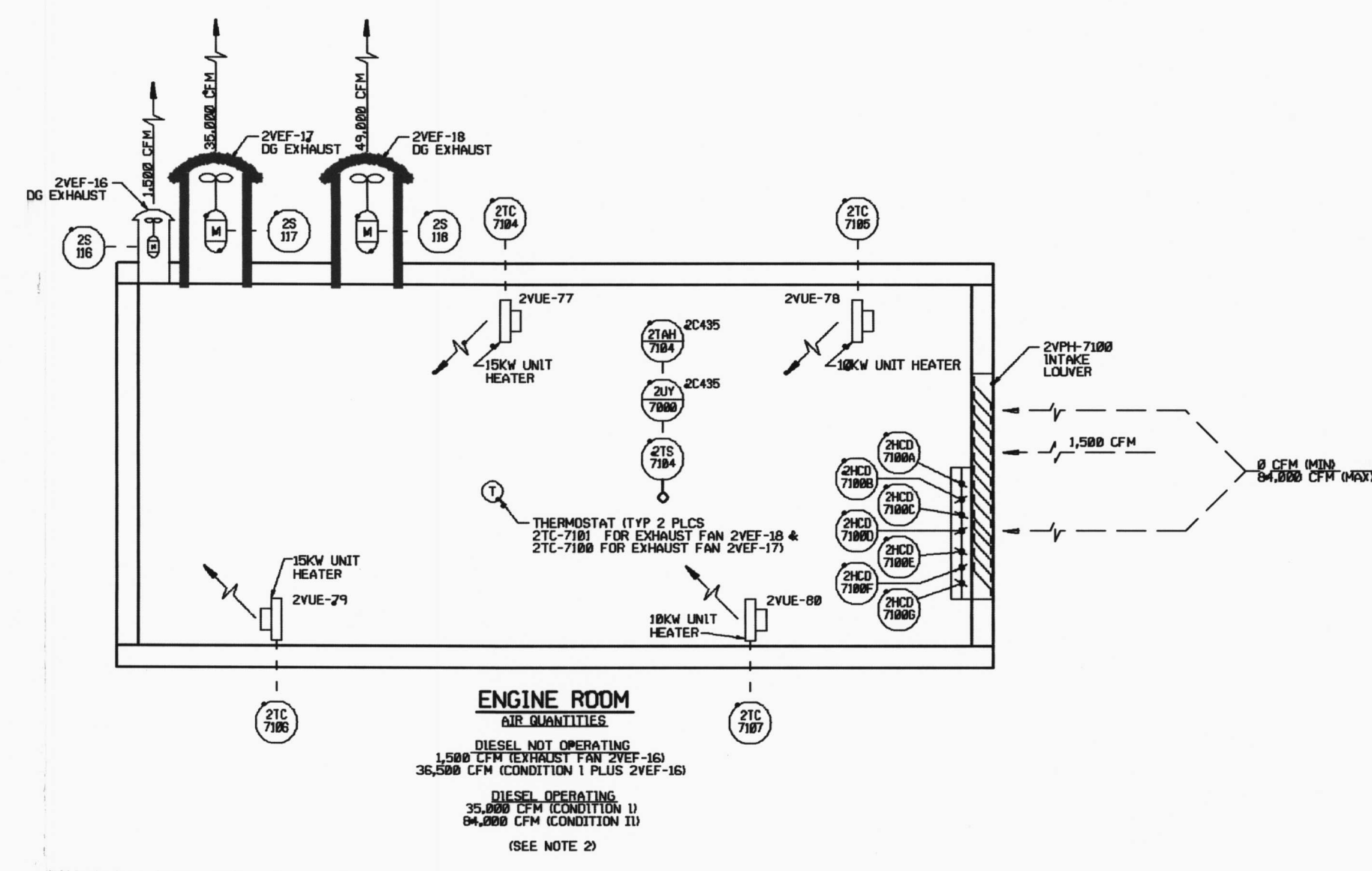


- NOTES:**
1. ALL DESIGN CONDITIONS CONFORM TO SPEC NO. AND M-2463 HEATING, VENTILATING & AIR CONDITIONING.
 2. OPERATING MODES FOR DIESEL ROOM:
CONDITION II: ONLY FAN 2VEF-17 OPERATES TO MAINTAIN ROOM BELOW MAXIMUM TEMPERATURE 120 DEG F, FAN ON AT 90 DEG F.
CONDITION III: BOTH FANS 2VEF-17 & 2VEF-18 OPERATE TO MAINTAIN ROOM BELOW MAXIMUM TEMPERATURE 120 DEG F, FAN 2VEF-18 ON AT 100 DEG F.
 3. INTAKE DRAININGS ARE SIZED FOR A FACE VELOCITY OF 500 FT/MINUTE MAXIMUM, BEFORE INTRODUCTION OF OBSTRUCTIONS.
 4. TEMPERATURE IN SWITCHGEAR SHALL NORMALLY BE MAINTAINED BETWEEN 80 DEG F AND 95 DEG F. UPON FAILURE OF AIR HANDLING UNIT, EXHAUST FAN 2VEF-19 SHALL OPERATE TO MAINTAIN TEMPERATURE BELOW 100 DEG F. NOTE 1.
 5. **TERMINOLOGY:** - ONE IS PROVIDED FOR EACH ENGINE ROOM EXHAUST FAN 2VEF-17 & -18, ONE FOR THE SWITCHGEAR ROOM AIR UNIT AND ONE FOR THE SWITCHGEAR ROOM EXHAUST FAN 2VEF-19.
 6. EXHAUST FAN OPERATES ON FAILURE OF AIR UNIT I.E. THERMOSTATICALLY CONTROLLED TO COME ON AT 90 DEG F.



1 SYSTEM/AMR REPORT ALTERNATE AC DIESEL GENERATOR/B2-R-2005-11		2 LICENSE RENEWAL BOUNDARY	
3 AIR FLOW DIAGRAM AAC GENERATOR BUILDING HEATING, VENTILATION & AIR CONDITION SUBSYSTEM		4 DRAWING NO LRA-M-2260	
5 SHEET 4		6 REVISION 0	